



# *Annual* **BULL SALE**

**Saturday April 12, 2025 | 2pm at Faith Livestock | Faith, SD**

**SELLING: 47 REGISTERED YEARLING BLACK ANGUS BULLS | 14 REGISTERED YEARLING 1-A RED ANGUS BULLS**

*Join us for a complimentary lunch at noon*





# Welcome

It's the best time of the year again! Welcome to our 8th annual bull sale. It seems like we repeat the same thing every year – that we feel like we have our best set of bulls to date – but we hope the bulls can speak for themselves. We continue to work hard and monitor them closely in hopes that we have something to offer anyone in either the commercial or seedstock business.

It's been another year packed full of farm and ranch work and kids' activities. There is never a dull moment, and there is always a great story to tell. Right now, we are actively calving, doing the regular spring work, freezing our butts off, and following our kids to basketball tournaments. After that ends, we will look forward to summer adventures on the ranch with our families and friends.

This year we had the privilege of taking two Red Angus bulls to the Black Hills Stock Show. Our friends, Brett & Laura Tostenson, were kind enough to prepare the bulls for us, and they had the bulls in prime condition for show and sale day. The bulls exceeded our expectations and took Grand and Reserve Champion Red Angus Bulls. It was a great experience that we hope to expand on in the future.

Here's the scoop on the sale bulls. We started creep feeding the bulls in the middle of August as a way to prolong our weaning date and to manage the drought conditions. This also allowed the bulls more time to develop before the sale. Just like in the past, we cull all bulls that don't measure up at weaning. We are still actively culling any animals in the herd that are not fertile or structurally sound, with a huge emphasis on feet, bags, and docility.

We feel extremely grateful for the help and support of our friend, Levi Haefner, and his family. Levi comes out regularly to help with both ranching and farming tasks. Most days, he's the reason we keep our heads above water! The rest of his family are always willing to help at even a moment's notice. They are great people, and we are thankful to call them friends.

Brett Tostenson and Jack Sieban of J&R Feeds are our go-to guys for our bull development rations. They've helped us develop these bulls since mid-August. The bulls were developed on a 46 mCal ration. We work to perfect their ration daily, and we understand the importance that proper nutrition has on the bulls' longevity.

Take a look through the catalog, check out the videos, or stop out anytime to take a look at the bulls. We have lots of ranch activity going on this time of year, so it's a great time to check out cows, bulls, and calves! As always, we look forward to earning your business, and we hope to see you on sale day!

*Justin, Somer, Quentin, and Karsin  
Riley, Cally, Madelyn, and Gracie*







## Annual Bull Sale

**BULL SALE SATURDAY, APRIL 12, 2025 – 2PM (MT)**

Faith Livestock Auction - Faith, SD

### **AUCTIONEER**

Dace Harper | 605-515-1535

### **SALE REPRESENTATIVE**

Dan Piroutek, Tri-State Livestock | 605-685-4556

Tyson Hewitt, KBHB | 605-206-0034

Ryan Casteel, Cattle Business Weekly | 605-432-6000

### **INTERNET VIEWING**

The sale will be broadcast via [www.DVAuction.com](http://www.DVAuction.com)

### **BULL VIDEOS**

Bull videos are available at [www.garrigancattle.com](http://www.garrigancattle.com).

### **TERMS & CONDITIONS**

The terms of the sale are cash or check. Registration certificates will be transferred to the new owner(s) once payment is made. **BULLS WILL SELL IN CATALOG ORDER.** The sale will follow the suggested sale terms and conditions of the American Angus Association.

### **SALE DAY ANNOUNCEMENTS**

All announcements from the block on sale day will take precedence over the information in this catalog.

### **BREEDING GUARANTEE**

All bulls are guaranteed 100% for soundness and fertility at delivery. If a bull is injured or dies during the first breeding season, a replacement will be supplied, if available. If a replacement is not needed or available, we will offer a sale credit of up to \$3,500. We will do our best to accommodate your individual situation.

### **CATALOG DESIGN**

Branding Impressions, Sturgis SD | 605-347-0878

### **SEMEN INTERESTS**

GLC plans to keep 1/3 semen interest in all bulls sold at today's sale.

### **SALE LOCATION**

Faith Livestock Commission Co.  
127 N. 5th Ave. W.  
Faith, SD 57626

### **SALE DAY TELEPHONE**

Faith Livestock | 605-967-2200

Justin Garrigan | 605-280-9220

Riley Garrigan | 605-280-9722

### **HERD HEALTH**

Bulls have been on a shot protocol recommended by Dr. Tammy Winger of Faith Veterinary Service.

Birth: Alpha CD, Inforce 3

Branding: Inforce 3, One Shot BVD

Preconditioning: Ultrabac 7 with Somnus, Bovishield Gold 1 Shot

Post-Weaning: Inforce 3, Autogenous, Pulmaguard PHM-1, Dectomax Injectable

Fertility Testing: Fusogard (booster 3 weeks later), Clean-Up

### **FERTILITY TESTING**

All bulls on today's sale have passed their fertility examination as performed by Dr. Rhett Scoggins; therefore, they will be ready to take home on sale day if you choose. Scrotal and pelvic measurements will be available sale day.

### **FEEDING & DELIVERY**

A \$50 credit will be given for each bull taken home on sale day. GLC offers free delivery within 300 miles. GLC will do all they can to accommodate any further distances. GLC will start bull delivery immediately after the sale. Talk to Justin or Riley if alternate arrangements need to be made with any bulls you purchase.





Lot 1

1

## GLC Torque 1174

DOB: 02/26/24 Reg #: 21179627 BRAND: 1174

Tehama Tahoe B767  
GLC Tahoe 281

GLC Cherry 932

B Bar Windy 7 3575  
GLC Cherry 117

GLC Cherry 728

BW: 88

Adj WW: 863 Ratio: 117

Adj. YW: 1532 Ratio: 113

ADG: 4.14 Ratio: 108



|     | CED | BW  | WW | YW  | Milk | MARB | REA  | Fat   | CW |
|-----|-----|-----|----|-----|------|------|------|-------|----|
| EPD | 3   | 0.9 | 77 | 135 | 21   | 0.23 | 0.25 | -0.01 | 39 |
| %   | 93  | 83  | 20 | 9   | 86   | 83   | 60   | 18    | 44 |

HERD SIRE PROSPECT! This bull doesn't have any holes. Phenotypically, he's flawless. He will catch your eye every time you walk in the pen with his massive amount of style. To add to that, he's backed by a great cow family. We plan to collect this bull at the buyer's convenience to use in our own herd.

2

## GLC Patriarch 2114

DOB: 02/16/24 Reg #: 21184625 BRAND: 2114

S S Niagara Z29  
Tehama Patriarch F028

Tehama Elite Blackbird D826

V D A R Cedar Wind 1044  
GLC Primrose Lady 211

GLC Primrose Lady 002

BW: 92

Adj WW: 855 Ratio: 116

Adj. YW: 1601 Ratio: 118

ADG: 4.62 Ratio: 120



|     | CED | BW  | WW | YW  | Milk | MARB | REA  | Fat   | CW |
|-----|-----|-----|----|-----|------|------|------|-------|----|
| EPD | 4   | 1.8 | 84 | 152 | 29   | 0.59 | 1.07 | 0.007 | 84 |
| %   | 49  | 53  | 3  | 1   | 24   | 69   | 1    | 28    | 1  |

Here's a bull with loads of capacity. He's a bull to add length and bone to your cattle. His dam comes from a pedigree with great longevity with good feet and udders. He should sire some high yielding cows that will last.



3

### GLC Statesman 2244

DOB: 02/24/24 Reg #: 21180262 BRAND: 2244

Tehama Patriarch F028  
Virginia Tech Statesman  
Vpi 310A Rita 9G6 Et

B Bar Windy 7 3575  
GLC Keri 224  
GLC Keri 006

BW: 90  
Adj WW: 842 Ratio: 114  
Adj. YW: 1557 Ratio: 114  
ADG: 4.43 Ratio: 115



|     | CED | BW  | WW | YW  | Milk | MARB | REA  | Fat   | CW |
|-----|-----|-----|----|-----|------|------|------|-------|----|
| EPD | -2  | 4.1 | 85 | 147 | 18   | 1.49 | 0.79 | 0.042 | 66 |
| %   | 93  | 97  | 18 | 20  | 87   | 2    | 12   | 68    | 25 |

This bull comes with lots of power from a maternally charged dam side. The growth in this bull won't give up maternal merit.

4

### GLC Statesman 2424

DOB: 02/25/24 Reg #: 21180258 BRAND: 2424

Tehama Patriarch F028  
Virginia Tech Statesman  
Vpi 310A Rita 9G6 Et

GLC Black Granite 216  
GLC Queen Lois 242  
Garrigan Queen Lois 509

BW: 88  
Adj WW: 799 Ratio: 108  
Adj. YW: 1538 Ratio: 113  
ADG: 4.57 Ratio: 119



|     | CED | BW | WW | YW  | Milk | MARB | REA  | Fat   | CW |
|-----|-----|----|----|-----|------|------|------|-------|----|
| EPD | -3  | 4  | 82 | 144 | 13   | 0.93 | 0.83 | 0.052 | 63 |
| %   | 91  | 94 | 13 | 14  | 95   | 20   | 18   | 75    | 22 |

Here is a smooth, correct bull with lots of style. His dam goes back to a great cow, 509, who is a Full Power daughter that produced some great calves and a herd bull within our herd.

5

### GLC Statesman 0284

DOB: 02/29/24 Reg #: 21180269 BRAND: 0284

Tehama Patriarch F028  
Virginia Tech Statesman  
Vpi 310A Rita 9G6 Et

B Bar Windy 7 3575  
GLC Zara 028  
GLC Zara 826

BW: 82  
Adj WW: 752 Ratio: 102  
Adj. YW: 1491 Ratio: 110  
ADG: 4.57 Ratio: 119



|     | CED | BW   | WW | YW  | Milk | MARB | REA  | Fat   | CW |
|-----|-----|------|----|-----|------|------|------|-------|----|
| EPD | 8   | -0.2 | 70 | 134 | 20   | 0.74 | 0.61 | 0.049 | 59 |
| %   | 49  | 41   | 28 | 9   | 89   | 34   | 39   | 83    | 30 |

This lot is a powerful bull that could also be used on heifers.





**6**

## GLC Payback 2384

DOB: 03/06/24 Reg #: 21179652 BRAND: 2384

WAR Payback 4132-740  
**WAR Payback 8536-1163**  
 Comrade Hand 8536 JF

GLC Stout 319  
**GLC Queen 238**  
 GLC Queen 853

BW: 75  
 Adj WW: 752 Ratio: 102  
 Adj. YW: 1552 Ratio: 114  
 ADG: 4.95 Ratio: 129

**zoetis**

|     | CED | BW  | WW | YW  | Milk | MARB | REA  | Fat  | CW |
|-----|-----|-----|----|-----|------|------|------|------|----|
| EPD | 11  | 0.7 | 59 | 122 | 39   | 0.15 | 0.19 | 0.04 | 39 |
| %   | 14  | 19  | 32 | 3   | 3    | 93   | 77   | 63   | 27 |

This bull comes in with the HIGHEST ADG in the sale! He's a bull-bred calf that kept up and exceeded many of his older brothers. His young dam produced a great one, and he kept going after weaning!

*Bull videos* AVAILABLE  
 ONLINE AT  
[WWW.GARRIGANCATTLE.COM](http://WWW.GARRIGANCATTLE.COM)

**Lot 7****7**

## GLC Statesman 2204

DOB: 02/20/24 Reg #: 21180261 BRAND: 2204

Tehama Patriarch F028  
**Virginia Tech Statesman**  
 Vpi 310A Rita 9G6 Et

Millars Windy 444  
**GLC All Lady 220**  
 GLC All Lady 024

BW: 80  
 Adj WW: 782 Ratio: 106  
 Adj. YW: 1513 Ratio: 111  
 ADG: 4.52 Ratio: 118

**zoetis**

|     | CED | BW   | WW | YW  | Milk | MARB | REA  | Fat   | CW |
|-----|-----|------|----|-----|------|------|------|-------|----|
| EPD | 10  | -0.5 | 57 | 109 | 22   | 0.92 | 0.32 | 0.069 | 49 |
| %   | 42  | 31   | 81 | 48  | 68   | 32   | 68   | 86    | 66 |

Here is a heifer bull that doesn't fail to perform after weaning.

**Lot 8****8**

## GLC Patriarch 8284

DOB: 02/29/24 Reg #: 21184635 BRAND: 8284

S S Niagara Z29  
**Tehama Patriarch F028**  
 Tehama Elite Blackbird D826

V D A R Cedar Wind 1044  
**GLC Annie 828**  
 Garrigan Annie 4U5

BW: 87  
 Adj WW: 747 Ratio: 101  
 Adj. YW: 1432 Ratio: 105  
 ADG: 4.24 Ratio: 110

**zoetis**

|     | CED | BW  | WW | YW  | Milk | MARB | REA  | Fat   | CW |
|-----|-----|-----|----|-----|------|------|------|-------|----|
| EPD | 8   | 0.3 | 61 | 114 | 27   | 0.58 | 0.46 | 0.029 | 40 |
| %   | 35  | 30  | 60 | 45  | 40   | 65   | 80   | 65    | 85 |

This bull has balanced EPD's, and he's a bull who would be successful in either a herd or cows or heifers. He comes with an extremely attractive profile. Keep the heifers!

**Lot 9****9**

## GLC Craftsman 9364

DOB: 03/01/24 Reg #: 21180288 BRAND: 9364

Sitz Resilient 10208  
**Connealy Craftsman**  
 Black Cathy of Conanga 8521

V D A R Cedar Wind 1064  
**GLC Eriskay 936**  
 GLC Eriskay 653

BW: 92  
 Adj WW: 820 Ratio: 111  
 Adj. YW: 1420 Ratio: 104  
 ADG: 3.71 Ratio: 97

**zoetis**

|     | CED | BW  | WW | YW  | Milk | MARB | REA  | Fat  | CW |
|-----|-----|-----|----|-----|------|------|------|------|----|
| EPD | 2   | 1.3 | 65 | 115 | 35   | 0.68 | 0.75 | 0.01 | 45 |
| %   | 22  | 20  | 67 | 44  | 10   | 43   | 15   | 19   | 56 |

This bull is a flashy one in the bull pen. He's well put-together and smooth from front to back. His dam 936 is becoming one of the best producers in our herd.



10

### GLC Patriarch 8214

DOB: 03/03/24 Reg #: 21184639 BRAND: 8214

S S Niagara Z29  
Tehama Patriarch F028  
Tehama Elite Blackbird D826  
V D A R Cedar Wind 1044  
GLC Blackbird 821  
DRL Blackbird 10 of 721

BW: 86  
Adj WW: 765 Ratio: 104  
Adj. YW: 1426 Ratio: 105  
ADG: 4.1 Ratio: 107



|     | CED | BW  | WW | YW  | Milk | MARB | REA  | Fat   | CW |
|-----|-----|-----|----|-----|------|------|------|-------|----|
| EPD | 10  | 0.7 | 61 | 115 | 28   | 0.78 | 0.55 | 0.036 | 47 |
| %   | 25  | 38  | 56 | 39  | 45   | 28   | 49   | 80    | 43 |

Here's a stylish Patriarch son out of a proven cow within our herd. His dam, 821, has an average WR 103 and an average YR 106 on 5 calves.

12

### GLC Torque 1384

DOB: 03/06/24 Reg #: 21179636 BRAND: 1384

Tehama Tahoe B767  
GLC Tahoe 281  
GLC Cherry 932  
VDAR Sonny Boy 5329  
GLC All Lady 138  
GLC All Lady 919

BW: 85  
Adj WW: 799 Ratio: 108  
Adj. YW: 1437 Ratio: 105  
ADG: 3.95 Ratio: 103



|     | CED | BW | WW | YW  | Milk | MARB | REA  | Fat   | CW |
|-----|-----|----|----|-----|------|------|------|-------|----|
| EPD | -1  | 3  | 70 | 123 | 16   | 0.82 | 0.53 | -0.06 | 36 |
| %   | 100 | 99 | 14 | 16  | 97   | 24   | 27   | 2     | 26 |

Here is one of our heavy-boned cow bulls. He's straight across the back and well put-together.

13

### GLC Torque 1234

DOB: 03/11/24 Reg #: 21179633 BRAND: 1234

Tehama Tahoe B767  
GLC Tahoe 281  
GLC Cherry 932  
B Bar Windy 7 3575  
GLC Queen Lass 123  
GLC Queen Lass 843

BW: 84  
Adj WW: 749 Ratio: 102  
Adj. YW: 1442 Ratio: 106  
ADG: 4.29 Ratio: 112



|     | CED | BW  | WW | YW  | Milk | MARB | REA  | Fat   | CW |
|-----|-----|-----|----|-----|------|------|------|-------|----|
| EPD | 6   | 0.5 | 71 | 124 | 27   | 0.63 | 0.22 | 0.009 | 47 |
| %   | 83  | 65  | 16 | 16  | 58   | 47   | 82   | 67    | 19 |

11

### GLC Patriarch 2224

DOB: 02/16/24 Reg #: 21184618 BRAND: 2224

S S Niagara Z29  
Tehama Patriarch F028  
Tehama Elite Blackbird D826  
Millars Windy 444  
GLC Dakota 222  
GLC Dakota 044

BW: 78  
Adj WW: 875 Ratio: 119  
Adj. YW: 1437 Ratio: 106  
ADG: 3.48 Ratio: 91



|     | CED | BW   | WW | YW  | Milk | MARB | REA  | Fat   | CW |
|-----|-----|------|----|-----|------|------|------|-------|----|
| EPD | 9   | -2.2 | 82 | 151 | 37   | 0.33 | 0.99 | 0.001 | 77 |
| %   | 30  | 6    | 10 | 2   | 2    | 88   | 4    | 21    | 7  |

This heifer bull has extremely high growth in a calving ease package. He's got an excellent Angus look and muscle expression. He's been a fan favorite in the bull pen!



This sale will be broadcast live on the internet.

# DVAuction

Broadcasting Real-Time Auctions

Real time bidding & proxy bidding available.



**14**

# GLC Torque 1074

DOB: 03/02/24 Reg #: 21179644 BRAND: 1074

Tehama Tahoe B767  
**GLC Tahoe 281**  
 GLC Cherry 932

U-2 Coalition 206C  
**GLC Queen Erica 107**  
 GLC Queen Erica 631

BW: 78  
 Adj WW: 728 Ratio: 99  
 Adj. YW: 1413 Ratio: 104  
 ADG: 4.24 Ratio: 110

*zoetis*

|     | CED | BW   | WW | YW  | Milk | MARB | REA  | Fat   | CW |
|-----|-----|------|----|-----|------|------|------|-------|----|
| EPD | 8   | -0.5 | 59 | 105 | 17   | 0.24 | 0.53 | 0.014 | 37 |
| %   | 17  | 6    | 83 | 85  | 94   | 92   | 60   | 55    | 82 |

This bull comes from a Coalition daughter. His performance was above average, and he's easy on the eyes!

**Lot 14****15**

# GLC Cavalry 9044

DOB: 03/16/24 Reg #: 21179615 BRAND: 9044

U-2 Coalition 206C  
**GLC Coalition 170**  
 GLC Queen 629

V D A R Sonny Boy 1194  
**GLC All Lady 904**  
 GLC All Lady 652

BW: 85  
 Adj WW: 773 Ratio: 105  
 Adj. YW: 1395 Ratio: 103  
 ADG: 3.86 Ratio: 100

*zoetis*

|     | CED | BW  | WW | YW  | Milk | MARB | REA | Fat   | CW |
|-----|-----|-----|----|-----|------|------|-----|-------|----|
| EPD | 9   | 1.2 | 58 | 111 | 26   | 0.45 | 0.2 | 0.005 | 46 |
| %   | 39  | 51  | 49 | 37  | 51   | 58   | 97  | 65    | 61 |

This bull comes from a dam who has an average WR 103 and average YR 106 on 4 calves.

**16**

# GLC Spectrum 0444

DOB: 03/06/24 Reg #: 21184492 BRAND: 0444

Musgrave 316 Exclusive  
**Sitz Spectrum**  
 Sunrise Lady Donna 003

GLC Black Granite 216  
**GLC Dakota 044**  
 GLC Dakota 740

BW: 94  
 Adj WW: 760 Ratio: 103  
 Adj. YW: 1390 Ratio: 102  
 ADG: 3.9 Ratio: 102

*zoetis*

|     | CED | BW   | WW | YW  | Milk | MARB | REA  | Fat   | CW |
|-----|-----|------|----|-----|------|------|------|-------|----|
| EPD | 9   | -0.1 | 59 | 112 | 30   | 0.59 | 0.93 | 0.001 | 56 |
| %   | 37  | 36   | 35 | 20  | 17   | 69   | 23   | 30    | 17 |

\*\*Heifer bull

**Lot 16****17**

# GLC Spectrum 6464

DOB: 02/29/24 Reg #: 21202871 BRAND: 6464

Musgrave 316 Exclusive  
**Sitz Spectrum**  
 Sunrise Lady Donna 003

Garrigan Hoover Dam 2H2  
**GLC Forever Lady 646**  
 DRL Forever Lady 1L3 of 313

BW: 94  
 Adj WW: 730 Ratio: 99  
 Adj. YW: 1360 Ratio: 100  
 ADG: 3.9 Ratio: 102

*zoetis*

|     | CED | BW | WW | YW  | Milk | MARB | REA  | Fat   | CW |
|-----|-----|----|----|-----|------|------|------|-------|----|
| EPD | 1   | 3  | 61 | 106 | 28   | 0.35 | 0.58 | 0.031 | 53 |
| %   | 90  | 85 | 70 | 70  | 35   | 85   | 65   | 65    | 55 |

Here is a bull from a top 10 cow in our herd. She produces a solid calf every year, this one being no exception. She's currently 9 years old, she's still in great shape, and she is still in active production on the ranch.

**Lot 17**



**18**

# GLC Torque 1504

DOB: 03/01/24 Reg #: 21179642 BRAND: 1504

Tehama Tahoe B767  
**GLC Tahoe 281**  
 GLC Cherry 932

Millars Renown 912  
**GLC Elbora Key 150**  
 GLC Elbora Key 830

BW: 86  
 Adj WW: 821 Ratio: 111  
 Adj. YW: 1391 Ratio: 102  
 ADG: 3.52 Ratio: 92

*zoetis*

|     | CED | BW  | WW | YW  | Milk | MARB | REA  | Fat   | CW |
|-----|-----|-----|----|-----|------|------|------|-------|----|
| EPD | 3   | 0.7 | 58 | 107 | 26   | 0.54 | 0.47 | 0.011 | 39 |
| %   | 80  | 65  | 79 | 46  | 53   | 47   | 60   | 41    | 68 |

This bull is the little brother to last year's Lot 1 bull, and the resemblance is uncanny. This cow is on her second calf and she's 2/2 on the bulls making the top half of the sale. This bull could definitely sire some productive females to put back into production in your herd.

**Lot 18****19**

# GLC Patriarch 9274

DOB: 02/29/24 Reg #: 21184634 BRAND: 9274

S S Niagara Z29  
**Tehama Patriarch F028**  
 Tehama Elite Blackbird D826

V D A R Cedar Wind 1064  
**GLC Babe 927**  
 Garrigan Mentor 901

BW: 75  
 Adj WW: 697 Ratio: 95  
 Adj. YW: 1351 Ratio: 100  
 ADG: 4.05 Ratio: 105

*zoetis*

|     | CED | BW   | WW | YW  | Milk | MARB | REA  | Fat   | CW |
|-----|-----|------|----|-----|------|------|------|-------|----|
| EPD | 16  | -1.5 | 66 | 123 | 30   | 0.74 | 0.94 | 0.034 | 64 |
| %   | 7   | 25   | 17 | 12  | 19   | 38   | 5    | 59    | 5  |

**20**

# GLC Patriarch 2214

DOB: 02/21/24 Reg #: 21184620 BRAND: 2214

S S Niagara Z29  
**Tehama Patriarch F028**  
 Tehama Elite Blackbird D826

Millars Windy 444  
**GLC Zara 221**  
 GLC Zara 028

BW: 73  
 Adj WW: 817 Ratio: 111  
 Adj. YW: 1395 Ratio: 103  
 ADG: 3.57 Ratio: 93

*zoetis*

|     | CED | BW   | WW | YW  | Milk | MARB | REA  | Fat  | CW |
|-----|-----|------|----|-----|------|------|------|------|----|
| EPD | 12  | -0.9 | 72 | 130 | 31   | 0.64 | 0.68 | 0.02 | 58 |
| %   | 5   | 5    | 31 | 24  | 18   | 52   | 35   | 46   | 16 |

**21**

# GLC Spectrum 9254

DOB: 02/27/24 Reg #: 21184495 BRAND: 9254

Musgrave 316 Exclusive  
**Sitz Spectrum**  
 Sunrise Lady Donna 003

V D A R Cedar Wind 1044  
**GLC Eriskay 925**  
 Garrigan Eriskay 549

BW: 79  
 Adj WW: 707 Ratio: 96  
 Adj. YW: 1337 Ratio: 97  
 ADG: 3.9 Ratio: 102

*zoetis*

|     | CED | BW   | WW | YW  | Milk | MARB | REA  | Fat    | CW |
|-----|-----|------|----|-----|------|------|------|--------|----|
| EPD | 11  | -1.2 | 58 | 101 | 20   | 0.53 | 0.58 | -0.013 | 33 |
| %   | 39  | 39   | 13 | 33  | 67   | 66   | 26   | 25     | 17 |

**22**

# GLC Craftsman 9414

DOB: 02/29/24 Reg #: 21180286 BRAND: 9414

Sitz Resilient 10208  
**Connealy Craftsman**  
 Black Cathy of Conanga 8521

Millars Windy 444  
**GLC Blackcap 941**  
 Mra Blackcap 0107

BW: 78  
 Adj WW: 710 Ratio: 96  
 Adj. YW: 1340 Ratio: 98  
 ADG: 3.9 Ratio: 102

*zoetis*

|     | CED | BW  | WW | YW | Milk | MARB | REA | Fat   | CW |
|-----|-----|-----|----|----|------|------|-----|-------|----|
| EPD | 6   | 0.1 | 57 | 97 | 30   | 0.59 | 0.6 | 0.008 | 31 |
| %   | 25  | 11  | 78 | 84 | 23   | 38   | 42  | 49    | 79 |

**Lot 22**



## GLC Statesman 0474

23

DOB: 02/28/24 Reg #: 21180270 BRAND: 0474

Tehama Patriarch F028  
Virginia Tech Statesman  
Vpi 310A Rita 9G6 Et

VDAR Stout 2837  
GLC Courtney 047  
Garrigan Courtney 519

BW: 71  
Adj WW: 741 Ratio: 101  
Adj. YW: 1341 Ratio: 99  
ADG: 3.71 Ratio: 97

zoetis

|     | CED | BW   | WW | YW  | Milk | MARB | REA  | Fat   | CW |
|-----|-----|------|----|-----|------|------|------|-------|----|
| EPD | 9   | -1.5 | 66 | 110 | 27   | 1.12 | 0.78 | 0.026 | 53 |
| %   | 54  | 39   | 36 | 35  | 22   | 11   | 19   | 34    | 32 |

Great bull, out of a great, quiet cow.



Lot 23

## GLC Cavalry 9434

24

DOB: 04/07/24 Reg #: 21179613 BRAND: 9434

U-2 Coalition 206C  
GLC Coalition 170  
GLC Queen 629

Millars Windy 444  
GLC Queen 943  
Garrigan R Upward 944

BW: 78  
Adj WW: 638 Ratio: 87  
Adj. YW: 1385 Ratio: 102  
ADG: 4.67 Ratio: 122

zoetis

|     | CED | BW  | WW | YW | Milk | MARB | REA  | Fat    | CW |
|-----|-----|-----|----|----|------|------|------|--------|----|
| EPD | 8   | 1.7 | 43 | 85 | 21   | 0.18 | 0.03 | -0.004 | 24 |
| %   | 64  | 58  | 89 | 77 | 81   | 90   | 97   | 32     | 77 |

Check out the ADG Ratio of 122 on this bull!



Lot 24

## GLC Cavalry 8514

25

DOB: 03/30/24 Reg #: 21179607 BRAND: 8514

U-2 Coalition 206C  
GLC Coalition 170  
GLC Queen 629

GLC Treasure 516  
GLC Primrose Lady 851  
GLC Primrose Lady 609

BW: 98  
Adj WW: 729 Ratio: 99  
Adj. YW: 1369 Ratio: 101  
ADG: 4 Ratio: 104

zoetis

|     | CED | BW  | WW | YW | Milk | MARB | REA  | Fat    | CW |
|-----|-----|-----|----|----|------|------|------|--------|----|
| EPD | 3   | 1.8 | 52 | 98 | 33   | 0.15 | 0.23 | -0.009 | 37 |
| %   | 72  | 47  | 33 | 39 | 6    | 94   | 78   | 46     | 25 |

Thank you  
FOR YOUR SUPPORT

## GLC Payback 2504

26

DOB: 03/31/24 Reg #: 21179646 BRAND: 2504

WAR Payback 4132-740  
WAR Payback 8536-1163  
Comrade Hand 8536 JF

VDAR Stout 2837  
GLC Rosie 250  
Garrigan Rosie 539

BW: 89  
Adj WW: 760 Ratio: 103  
Adj. YW: 1438 Ratio: 106  
ADG: 4.24 Ratio: 110

zoetis

|     | CED | BW  | WW | YW  | Milk | MARB  | REA  | Fat   | CW |
|-----|-----|-----|----|-----|------|-------|------|-------|----|
| EPD | 10  | 1.2 | 66 | 115 | 24   | -0.05 | 0.04 | 0.035 | 36 |
| %   | 27  | 60  | 12 | 27  | 60   | 96    | 88   | 80    | 23 |



Lot 26





Pictured: Karsin, Evia, Gracie, Quentin, and Madelyn at their 2024 Lemonade Stand. Each year, our kids serve lemonade at the bull sale. At the lemonade stand, there is a free-will donation box. The kids donate the money to a local cause that is important to them. Last year, the kids donated the money toward a new basketball hoop for "Little Horns" at the Faith Community Center. This tradition is the kids' special part of the bull sale. This year will be their fourth lemonade stand. We are excited to find out who they decide to donate their money to this year!



Here is how the kids used their 2024 Lemonade Stand money. With the help of a generous contribution from FAITH AREA COMMUNITY FOUNDATION, they used the money to purchase a basketball hoop to use for the local little kids who participate in Little Horns at home basketball games. The kids hope it is used by the community for many years to come!



**27**

## GLC Patriarch 0554

DOB: 02/27/24 Reg #: 21184629 BRAND: 0554

S S Niagara Z29  
**Tehama Patriarch F028**  
 Tehama Elite Blackbird D826  
 Pine Creek Chisum 7017  
**GLC Blackbird 055**  
 GLC Blackbird 833

BW: 80  
 Adj WW: 709 Ratio: 96  
 Adj. YW: 1325 Ratio: 97  
 ADG: 3.81 Ratio: 99



|     | CED | BW   | WW | YW  | Milk | MARB | REA  | Fat   | CW |
|-----|-----|------|----|-----|------|------|------|-------|----|
| EPD | 15  | -1.6 | 65 | 114 | 20   | 0.71 | 0.57 | 0.039 | 40 |
| %   | 16  | 24   | 22 | 40  | 71   | 59   | 40   | 85    | 42 |

\*\*Sleep all night calving ease!



Lot 27

**28**

## GLC Torque 1204

DOB: 03/03/24 Reg #: 21179630 BRAND: 1204

Tehama Tahoe B767  
**GLC Tahoe 281**  
 GLC Cherry 932  
 B Bar Windy 7 3575  
**GLC Blackbird 120**  
 GLC Blackbird 821

BW: 69  
 Adj WW: 756 Ratio: 103  
 Adj. YW: 1340 Ratio: 99  
 ADG: 3.62 Ratio: 94



|     | CED | BW | WW | YW  | Milk | MARB | REA  | Fat    | CW |
|-----|-----|----|----|-----|------|------|------|--------|----|
| EPD | 11  | -2 | 63 | 112 | 30   | 0.41 | 0.68 | -0.017 | 47 |
| %   | 18  | 8  | 38 | 36  | 27   | 74   | 17   | 15     | 26 |

\*\*Heifer bull



Lot 28







Lot 29

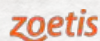
## GLC Patriarch 9284

29

DOB: 02/25/24 Reg #: 21184633 BRAND: 9284

S S Niagara Z29  
**Tehama Patriarch F028**  
 Tehama Elite Blackbird D826  
 V D A R Cedar Wind 1064  
**GLC Blackbird 928**  
 Garrigan Blackbird 4CF1

BW: 82  
 Adj WW: 792 Ratio: 107  
 Adj. YW: 1285 Ratio: 94  
 ADG: 3.05 Ratio: 79



|     | CED | BW   | WW | YW  | Milk | MARB | REA  | Fat   | CW |
|-----|-----|------|----|-----|------|------|------|-------|----|
| EPD | 10  | -0.6 | 66 | 120 | 28   | 0.48 | 0.51 | 0.029 | 38 |
| %   | 25  | 10   | 70 | 75  | 30   | 75   | 75   | 65    | 90 |

This bull has grown to be one of our favorites. We love this bull's mother, and he's beginning to shine in the bull pen. He is the whole package. He's smooth but doesn't give up depth of rib. Being a heifer bull, he could definitely sire some high-end calves even out of heifers.

## GLC Cavalry 0514

30

DOB: 04/02/24 Reg #: 21179618 BRAND: 0514

U-2 Coalition 206C  
**GLC Coalition 170**  
 GLC Queen 629  
 VDAR Stout 2837  
**GLC Dorothy 051**  
 GLC Dorothy 619

BW: 104  
 Adj WW: 677 Ratio: 92  
 Adj. YW: 1363 Ratio: 101  
 ADG: 4.29 Ratio: 112



|     | CED | BW  | WW | YW | Milk | MARB | REA  | Fat    | CW |
|-----|-----|-----|----|----|------|------|------|--------|----|
| EPD | -7  | 5.6 | 52 | 92 | 18   | 0.22 | 0.22 | -0.035 | 27 |
| %   | 100 | 99  | 64 | 69 | 91   | 92   | 89   | 6      | 66 |

This bull comes from one of our favorite cows on the ranch. She is one that will catch your eye because she looks the same the day after calving as she does the day before calving and basically for every day of the year. Take a look at this bull – especially if you want to keep some productive females.

## GLC Craftsman 5204

31

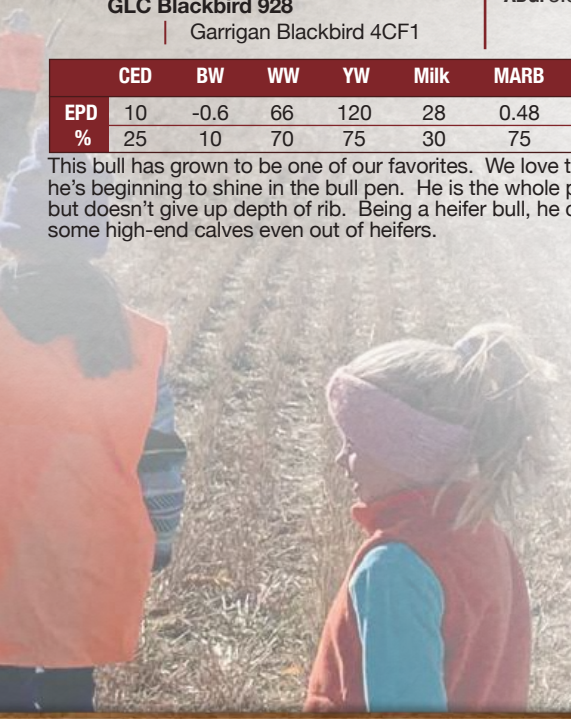
DOB: 03/02/24 Reg #: 21180304 BRAND: 5204

Sitz Resilient 10208  
**Connealy Craftsman**  
 Black Cathy of Conanga 8521  
 TC Thunder 805  
**Garrigan Augie 520**  
 Garrigan S Upward 705

BW: 62  
 Adj WW: 632 Ratio: 86  
 Adj. YW: 1293 Ratio: 95  
 ADG: 4.1 Ratio: 107



|     | CED | BW   | WW | YW  | Milk | MARB | REA  | Fat   | CW |
|-----|-----|------|----|-----|------|------|------|-------|----|
| EPD | 5   | -0.8 | 54 | 104 | 36   | 1.01 | 0.54 | 0.049 | 32 |
| %   | 97  | 86   | 25 | 11  | 5    | 8    | 35   | 66    | 31 |





**32**

## GLC Cavalry 6134

DOB: 02/28/24 Reg #: 21179600 BRAND: 6134

U-2 Coalition 206C  
**GLC Coalition 170**  
 GLC Queen 629

Connealy Comrade 1385  
**GLC Cardinal 613**  
 Garrigan Mentor 313

BW: 62  
 Adj WW: 685 Ratio: 93  
 Adj. YW: 1277 Ratio: 94  
 ADG: 3.67 Ratio: 95

**zoetis**

|     | CED | BW   | WW | YW | Milk | MARB | REA  | Fat    | CW |
|-----|-----|------|----|----|------|------|------|--------|----|
| EPD | 11  | -3.5 | 36 | 68 | 38   | 0.74 | 0.15 | -0.025 | 15 |
| %   | 86  | 24   | 86 | 57 | 3    | 26   | 87   | 21     | 78 |

This bull comes from a cow that has an average WR of 101 on 7 calves.

**Lot 31****33**

## GLC Patriarch 2464

DOB: 02/25/24 Reg #: 21184616 BRAND: 2464

S S Niagara Z29  
**Tehama Patriarch F028**  
 Tehama Elite Blackbird D826

GLC Black Granite 216  
**GLC Dakota 246**  
 GLC Dakota 740

BW: 68  
 Adj WW: 687 Ratio: 93  
 Adj. YW: 1341 Ratio: 99  
 ADG: 4.05 Ratio: 105

**zoetis**

|     | CED | BW | WW | YW | Milk | MARB | REA  | Fat   | CW |
|-----|-----|----|----|----|------|------|------|-------|----|
| EPD | 17  | -3 | 47 | 95 | 36   | 0.79 | 0.46 | 0.037 | 34 |
| %   | 2   | 3  | 87 | 52 | 4    | 50   | 57   | 64    | 83 |

Very attractive, high calving ease bull. Check him out!

**Lot 33****34**

## GLC Cavalry 9234

DOB: 03/24/24 Reg #: 21179611 BRAND: 9234

U-2 Coalition 206C  
**GLC Coalition 170**  
 GLC Queen 629

V D A R Cedar Wind 1044  
**GLC Sara 923**  
 Garrigan Sara 540

BW: 98  
 Adj WW: 749 Ratio: 102  
 Adj. YW: 1319 Ratio: 100  
 ADG: 3.52 Ratio: 92

**zoetis**

|     | CED | BW  | WW | YW  | Milk | MARB | REA  | Fat   | CW |
|-----|-----|-----|----|-----|------|------|------|-------|----|
| EPD | 1   | 2.4 | 50 | 100 | 27   | 0.13 | 0.23 | 0.016 | 30 |
| %   | 92  | 92  | 54 | 17  | 47   | 96   | 71   | 43    | 25 |

This bull's dam has an average WR 102 on 4 calves.

**Lot 34****35**

## GLC Torque 1444

DOB: 03/04/24 Reg #: 21179638 BRAND: 1444

Tehama Tahoe B767  
**GLC Tahoe 281**  
 GLC Cherry 932

VDAR Sonny Boy 5329  
**GLC Dorothy 144**  
 GLC Dorothy 951

BW: 70  
 Adj WW: 735 Ratio: 100  
 Adj. YW: 1313 Ratio: 97  
 ADG: 3.57 Ratio: 93

**zoetis**

|     | CED | BW   | WW | YW | Milk | MARB | REA  | Fat    | CW |
|-----|-----|------|----|----|------|------|------|--------|----|
| EPD | 8   | -0.1 | 54 | 91 | 23   | 0.82 | 0.53 | -0.061 | 24 |
| %   | 78  | 85   | 50 | 65 | 51   | 23   | 61   | 7      | 70 |

**36**

## GLC Torque 1064

DOB: 03/03/24 Reg #: 21179639 BRAND: 1064

Tehama Tahoe B767  
**GLC Tahoe 281**  
 GLC Cherry 932

Tehama Tahoe B767  
**GLC Sara 106**  
 GLC Sara 923

BW: 85  
 Adj WW: 753 Ratio: 102  
 Adj. YW: 1307 Ratio: 96  
 ADG: 3.43 Ratio: 89

**zoetis**

|     | CED | BW  | WW | YW  | Milk | MARB | REA  | Fat   | CW |
|-----|-----|-----|----|-----|------|------|------|-------|----|
| EPD | 4   | 1.1 | 65 | 111 | 27   | 0.64 | 0.73 | 0.002 | 41 |
| %   | 76  | 56  | 46 | 66  | 43   | 46   | 11   | 14    | 57 |



## GLC Craftsman 8024

37

DOB: 03/02/24 Reg #: 21180292 BRAND: 8024

Sitz Resilient 10208  
Connealy Craftsman  
Black Cathy of Conanga 8521

Coleman Charlo 0256  
GLC Jeanne 802  
Garrigan C C & 7 944

BW: 79  
Adj WW: 705 Ratio: 96  
Adj. YW: 1236 Ratio: 91  
ADG: 3.29 Ratio: 86

zoetis

|     | CED | BW  | WW | YW | Milk | MARB | REA  | Fat   | CW |
|-----|-----|-----|----|----|------|------|------|-------|----|
| EPD | 3   | 1.6 | 56 | 95 | 33   | 1.01 | 0.39 | 0.059 | 19 |
| %   | 50  | 32  | 77 | 92 | 15   | 10   | 57   | 90    | 95 |



Lot 37

## GLC Patriarch 2514

38

DOB: 02/20/24 Reg #: 21184605 BRAND: 2514

S S Niagara Z29  
Tehama Patriarch F028  
Tehama Elite Blackbird D826

GLC Coalition 170  
GLC All Lady 251  
GLC All Lady 907

BW: 77  
Adj WW: 816 Ratio: 111  
Adj. YW: 1277 Ratio: 94  
ADG: 2.86 Ratio: 74

zoetis

|     | CED | BW  | WW | YW  | Milk | MARB | REA  | Fat    | CW |
|-----|-----|-----|----|-----|------|------|------|--------|----|
| EPD | 9   | 0.3 | 68 | 122 | 31   | 0.57 | 0.93 | -0.027 | 62 |
| %   | 42  | 40  | 25 | 28  | 20   | 64   | 16   | 23     | 16 |

## GLC Craftsman 8464

39

DOB: 02/25/24 Reg #: 21180293 BRAND: 8464

Sitz Resilient 10208  
Connealy Craftsman  
Black Cathy of Conanga 8521

V D A R Cedar Wind 1064  
GLC Queen Lois 846  
Garrigan Queen Lois 509

BW: 85  
Adj WW: 643 Ratio: 87  
Adj. YW: 1227 Ratio: 90  
ADG: 3.62 Ratio: 94

zoetis

|     | CED | BW  | WW | YW  | Milk | MARB | REA  | Fat | CW |
|-----|-----|-----|----|-----|------|------|------|-----|----|
| EPD | 2   | 1.6 | 61 | 110 | 35   | 0.61 | 0.99 | 0   | 43 |
| %   | 87  | 81  | 39 | 35  | 5    | 42   | 10   | 23  | 32 |

## GLC Spectrum 0434

40

DOB: 03/13/24 Reg #: 21184494 BRAND: 0434

Musgrave 316 Exclusive  
Sitz Spectrum  
Sunrise Lady Donna 003

GLC Black Granite 216  
GLC Elbora Key 043  
GLC Elbora Key 736

BW: 82  
Adj WW: 689 Ratio: 93  
Adj. YW: 1267 Ratio: 93  
ADG: 3.57 Ratio: 93

zoetis

|     | CED | BW   | WW | YW | Milk | MARB | REA  | Fat   | CW |
|-----|-----|------|----|----|------|------|------|-------|----|
| EPD | 14  | -2.8 | 51 | 90 | 24   | 0.67 | 0.97 | 0.013 | 36 |
| %   | 4   | 2    | 82 | 83 | 52   | 46   | 8    | 28    | 53 |

\*\*Heifer bull



Lot 39



## GLC Southern 8334

41

DOB: 03/30/24 Reg #: 21179605 BRAND: 8334

BUBS Southern Son 33C  
**Tcar Southern Son 2020**  
 Tcar Winnie Blackbird 0052  
 V D A R Cedar Wind 1044  
**GLC Blackbird 833**  
 GLC Blackbird 620

BW: 88  
 Adj WW: 660 Ratio: 90  
 Adj. YW: 1270 Ratio: 94  
 ADG: 3.81 Ratio: 99

zoetis

|     | CED | BW  | WW | YW  | Milk | MARB | REA  | Fat    | CW |
|-----|-----|-----|----|-----|------|------|------|--------|----|
| EPD | 6   | 0.7 | 60 | 110 | 12   | 0.17 | 0.72 | -0.046 | 34 |
| %   | 37  | 23  | 46 | 39  | 100  | 90   | 24   | 14     | 54 |

Here is a very moderate framed and smooth bull prospect. He's got great shape to him if you are looking for a bull in a more moderate package.



Lot 41

## GLC Southern 7284

42

DOB: 03/22/24 Reg #: 21179602 BRAND: 7284

BUBS Southern Son 33C  
**Southern Son 2020**  
 Tcar Winnie Blackbird 0052  
 V D A R Cedar Wind 1044  
**GLC Cherry 728**  
 Garrigan Cherry 518

BW: 85  
 Adj WW: 668 Ratio: 91  
 Adj. YW: 1252 Ratio: 92  
 ADG: 3.62 Ratio: 94

zoetis

|     | CED | BW  | WW | YW | Milk | MARB | REA  | Fat   | CW |
|-----|-----|-----|----|----|------|------|------|-------|----|
| EPD | 5   | 0.5 | 42 | 79 | 23   | 0.1  | 0.02 | 0.008 | 21 |
| %   | 57  | 34  | 86 | 59 | 87   | 97   | 83   | 41    | 83 |



Lot 42

## GLC Payback 2284

43

DOB: 03/16/24 Reg #: 21179650 BRAND: 2284

WAR Payback 4132-740  
**WAR Payback 8536-1163**  
 Comrade Hand 8536 JF  
 GLC Churchill 228  
**GLC Queen Lassie 228**  
 GLC Queen Lassie 835

BW: 78  
 Adj WW: 775 Ratio: 105  
 Adj. YW: 1306 Ratio: 96  
 ADG: 3.29 Ratio: 86

zoetis

|     | CED | BW  | WW | YW  | Milk | MARB | REA | Fat   | CW |
|-----|-----|-----|----|-----|------|------|-----|-------|----|
| EPD | 10  | 0.5 | 76 | 132 | 31   | 0.9  | 0.8 | 0.063 | 68 |
| %   | 45  | 48  | 10 | 7   | 36   | 20   | 26  | 93    | 13 |

*Bull videos* AVAILABLE  
 ONLINE AT  
[WWW.GARRIGANCATTLE.COM](http://WWW.GARRIGANCATTLE.COM)





**44**

# GLC Cavalry 8264

DOB: 02/28/24 Reg #: 21179608 BRAND: 8264

U-2 Coalition 206C  
GLC Coalition 170  
GLC Queen 629  
V D A R Cedar Wind 1044  
GLC Zara 826  
Garrigan Zara 4RU3

BW: 72  
Adj WW: 619 Ratio: 84  
Adj. YW: 1211 Ratio: 89  
ADG: 3.67 Ratio: 95

zoetis

|     | CED | BW  | WW | YW | Milk | MARB | REA  | Fat    | CW |
|-----|-----|-----|----|----|------|------|------|--------|----|
| EPD | 9   | 0.3 | 48 | 98 | 36   | 0.06 | 0.33 | -0.067 | 41 |
| %   | 81  | 73  | 22 | 7  | 3    | 94   | 66   | 4      | 8  |



Lot 44

**45**

# GLC Payback 2014

DOB: 03/12/24 Reg #: 21179654 BRAND: 2014

WAR Payback 4132-740  
WAR Payback 8536-1163  
Comrade Hand 8536 JF  
Sitz Resilient 10208  
GLC Queen 201  
Garrigan JT Queen 4MR9

BW: 72  
Adj WW: 625 Ratio: 85  
Adj. YW: 1302 Ratio: 96  
ADG: 4.19 Ratio: 109

zoetis

|     | CED | BW  | WW | YW | Milk | MARB | REA  | Fat   | CW |
|-----|-----|-----|----|----|------|------|------|-------|----|
| EPD | 13  | 1.5 | 57 | 99 | 23   | 0.31 | -0.1 | 0.063 | 31 |
| %   | 7   | 38  | 63 | 73 | 64   | 71   | 98   | 86    | 71 |



Lot 45

**46**

# GLC Cavalry 6524

DOB: 03/25/24 Reg #: 21179599 BRAND: 6524

U-2 Coalition 206C  
GLC Coalition 170  
GLC Queen 629  
Garrigan Hoover Dam 2H2  
GLC All Lady 652  
Garrigan S Upward 978

BW: 90  
Adj WW: 674 Ratio: 91  
Adj. YW: 1252 Ratio: 92  
ADG: 3.57 Ratio: 93

zoetis

|     | CED | BW  | WW | YW | Milk | MARB | REA  | Fat    | CW |
|-----|-----|-----|----|----|------|------|------|--------|----|
| EPD | 0   | 4.7 | 49 | 85 | 19   | 0.33 | -0.2 | -0.015 | 25 |
| %   | 100 | 100 | 43 | 62 | 78   | 81   | 99   | 36     | 68 |

**47**

# GLC Payback 2064

DOB: 03/28/24 Reg #: 21179653 BRAND: 2064

WAR Payback 4132-740  
WAR Payback 8536-1163  
Comrade Hand 8536 JF  
Sitz Resilient 10208  
GLC Forever Lady 206  
GLC Forever Lady 745

BW: 61  
Adj WW: 699 Ratio: 95  
Adj. YW: 1309 Ratio: 97  
ADG: 3.81 Ratio: 99

zoetis

|     | CED | BW | WW | YW  | Milk | MARB | REA  | Fat   | CW |
|-----|-----|----|----|-----|------|------|------|-------|----|
| EPD | 6   | -1 | 51 | 100 | 31   | 0.52 | 0.22 | 0.078 | 38 |
| %   | 43  | 10 | 93 | 76  | 28   | 47   | 89   | 86    | 89 |



Lot 47



# Featured AT THE 2025 BLACK HILLS STOCK SHOW & RODEO

DOB: 02-21-2024 Reg #: 4992389 BRAND: 2304

## GRAND CHAMPION RED ANGUS BULL GLC Axl 2304

Bull is owned by: Larry Schuelke Mud Butte, SD  
and Garrigan Land & Cattle Dupree, SD



|                          |                           |
|--------------------------|---------------------------|
| LSF MEW X-FACTOR 6693D   | BW: 74                    |
| <b>GLC X-FACTOR 5631</b> | Adj WW: 757 Ratio: 109    |
| LEM ONEKIND 934 ET       | Adj. YW: 1405 Ratio: 110  |
| FORSTER BLOCKADE E046    | ADG: 4.04 Ratio: 110      |
| <b>GLC BARONESS 230</b>  | ProS: 93, 67% HB: 39, 76% |
| GLC BARONESS 714         | GM: 54, 41% <b>zoetis</b> |

|     | CED | BW   | WW | YW  | Milk | ME | MARB | REA  | Fat | CW | YG   |
|-----|-----|------|----|-----|------|----|------|------|-----|----|------|
| EPD | 11  | -1.7 | 81 | 140 | 24   | 11 | 0.36 | 0.19 | 0   | 30 | 0.02 |
| %   | 73  | 52   | 7  | 3   | 64   | 86 | 71   | 36   | 15  | 26 | 25   |

DOB: 03-01-2024 Reg #: 4992355 BRAND: 714

## RESERVE CHAMPION RED ANGUS BULL GLC Stock Yard 0714

Bull is owned by: Larry Schuelke Mud Butte, SD  
and Garrigan Land & Cattle Dupree, SD



|                              |                            |
|------------------------------|----------------------------|
| BIEBER CL STOCKMARKET E119   | BW: 80                     |
| <b>LEM STOCKYARD 2001 ET</b> | Adj WW: 808 Ratio: 117     |
| LEM ONEKIND 934 ET           | Adj. YW: 1332 Ratio: 104   |
| WFL MERLIN 018A              | ADG: 3.27 Ratio: 89        |
| <b>GLC PURDY 071</b>         | ProS: 112, 38% HB: 48, 60% |
| GLC PURDY 831                | GM: 64, 23% <b>zoetis</b>  |

|     | CED | BW   | WW | YW  | Milk | ME | MARB | REA | Fat  | CW | YG   |
|-----|-----|------|----|-----|------|----|------|-----|------|----|------|
| EPD | 19  | -4.8 | 78 | 124 | 29   | 8  | 0.49 | 0.3 | 0.02 | 34 | 0.07 |
| %   | 2   | 7    | 12 | 14  | 18   | 75 | 35   | 21  | 62   | 14 | 49   |

Contact Riley at (605) 280-9722 for semen availability.



# THE HD50K™ FOR ANGUS



**HD50K™ FOR ANGUS IS A GENOTYPING TECHNOLOGY FROM ZOETIS DESIGNED FOR ANGUS SEEDSTOCK PRODUCERS AND FULLY ENDORSED BY THE AMERICAN ANGUS ASSOCIATION AND ANGUS GENETICS, INC.**

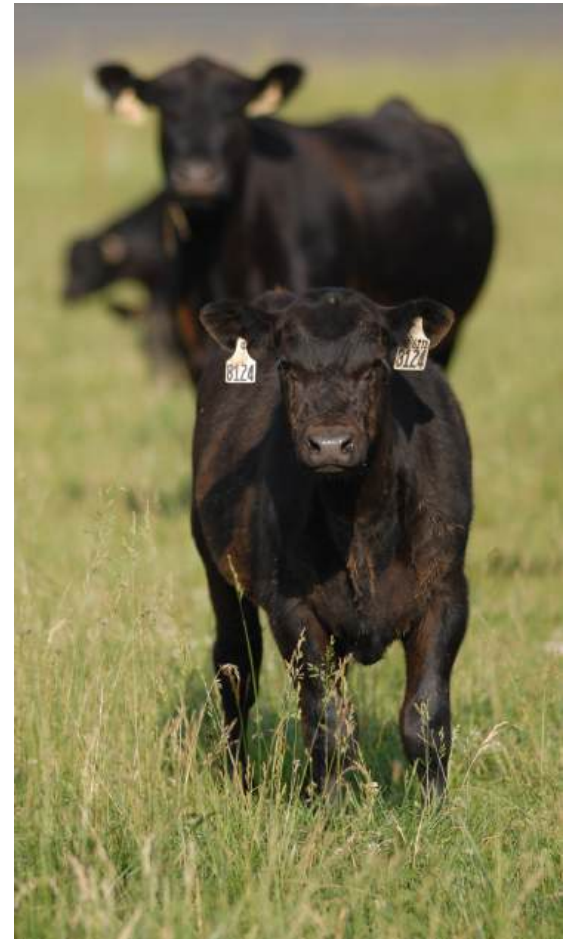
HD50K™ for Angus replaces i50K™ and the previous version of HD 50K™, and represents an advancement in Angus genotyping technology.

## **ZOETIS PROVIDES COMPREHENSIVE GENETIC AND MANAGEMENT SOLUTIONS FOR BEEF PRODUCERS:**

- 17 staff Ph.D. geneticists driving cutting edge research and development as well as field and customer support across the livestock business
- First to market with novel wellness traits in dairy cows and calves
- Development of innovative decision support tools
- Unmatched technical support and customer service

## **SELECT, MATE AND MARKET ANGUS SEEDSTOCK WITH CONFIDENCE:**

- Commercial bull buyers increasingly request GE-EPDs
- HD50K™ for Angus tested bull batteries enable Sire Match for GeneMax® Advantage™ tested heifers
- Reduce selection and breeding mistakes—with HD50K™ for Angus



HD50K™ for Angus is available to American Angus Association members through Angus Genetics, Inc. and may be purchased online through the AAA Login site.

*HD50K™ for Angus: The people, the products, and services you have always relied on.*

All trademarks are the property of Zoetis Services LLC or a related company or a licensor unless otherwise noted. GeneMax is a registered trademark of Angus Genetics, Inc. ©2019 Zoetis Services LLC. All rights reserved. 50K-00024



# RED ANGUS SALE BULLS



Lot 48

## GLC STOCK YARD 9584

48

DOB: 03-01-2024    Reg #: 4992333    BRAND: 9584

BIEBER CL STOCKMARKET E119  
**LEM STOCKYARD 2001 ET**  
 LEM ONEKIND 934 ET

TMAS MR SMOKY 731E  
**GLC SONJA 958**  
 S BAR U SONJA 540

BW: 82  
 Adj WW: 737    Ratio: 106  
 Adj. YW: 1468    Ratio: 113  
 ADG: 4.57    Ratio: 121  
 ProS: 116, 31%    HB: 42, 72%  
 GM: 74, 11%    **zoetis**

|     | CED | BW   | WW | YW  | Milk | ME | MARB | REA   | Fat  | CW | YG   |
|-----|-----|------|----|-----|------|----|------|-------|------|----|------|
| EPD | 15  | -4.3 | 68 | 122 | 25   | 5  | 0.7  | -0.05 | 0.02 | 16 | 0.09 |
| %   | 26  | 11   | 41 | 16  | 58   | 57 | 10   | 83    | 55   | 78 | 64   |

We think this bull could be a great HERD SIRE PROSPECT to sire truly great all-around cattle. He's got calving ease, growth, eye-appeal, good temperament... His half brother was the reserve champion bull at the 2025 Black Hills Stock Show, and we feel this bull could even be a step above him. His cow has an MPPA of 103, and she has great structure and temperament as well. He is a bull we are very proud to have raised.





49

## GLC PRIME TIME 1094

DOB: 02-23-2024 Reg #: 4992373 BRAND: 1094

LSF SRR PRIME FACTOR 9014G  
**GLC PRIME TIME 5542**  
 S BAR U SONJA 554

LSF MEW X-FACTOR 6693D  
**GLC BARONESS 109**  
 GLC BARONESS 954

BW: 83  
 Adj WW: 765 Ratio: 110  
 Adj. YW: 1398 Ratio: 129  
 ADG: 4.38 Ratio: 118  
 ProS: 128, 18% HB: 10, 99%  
 GM: 118, 1% **zoetis**

|     | CED | BW   | WW | YW  | Milk | ME | MARB | REA  | Fat  | CW | YG   |
|-----|-----|------|----|-----|------|----|------|------|------|----|------|
| EPD | 12  | -1.9 | 92 | 172 | 22   | 14 | 0.69 | 0.07 | 0.07 | 43 | 0.29 |
| %   | 68  | 48   | 1  | 1   | 86   | 95 | 11   | 61   | 99   | 4  | 99   |

This bull has been a standout since birth. His EPD profile mimics how much he's stood out in the herd. If you want to ADD POUNDS and IMPROVE PERFORMANCE, this is the bull for you. He's a total outcross to many popular pedigrees. His mother is a productive X-Factor daughter, backed by a phenomenal cow line.



Lot 49

50

## GLC FREE STYLE 9534

DOB: 02-23-2024 Reg #: 4992331 BRAND: 9534

BIEBER DEEP END B597  
**SUTH FREE STYLE 38G**  
 SUTH TRILOGY BEAUTY 5059

H2R PROFITBUILDER B403  
**GLC JENNA 953**  
 S BAR U JENNA 570

BW: 71  
 Adj WW: 669 Ratio: 97  
 Adj. YW: 1362 Ratio: 105  
 ADG: 4.33 Ratio: 115  
 ProS: 157, 2% HB: 87, 4%  
 GM: 69, 16% **zoetis**

|     | CED | BW   | WW | YW  | Milk | ME | MARB | REA  | Fat  | CW | YG   |
|-----|-----|------|----|-----|------|----|------|------|------|----|------|
| EPD | 16  | -2.9 | 67 | 117 | 28   | 17 | 0.64 | 0.04 | 0.03 | 28 | 0.14 |
| %   | 14  | 29   | 46 | 23  | 27   | 98 | 15   | 67   | 70   | 32 | 83   |

Here is a deep red, very smooth-built bull. He comes from a great cow line. His dam has an MPPA of 103.



Lot 50

51

## GLC PROFIT 9654

DOB: 03-07-2024 Reg #: 4992337 BRAND: 9654

H2R PROFITBUILDER B403  
**GLC PROFITBUILDER 5699**  
 S BAR U ANGEL 569

TMAS MR SMOKY 731E  
**GLC BABE 965**  
 GLC BABE 712

BW: 75  
 Adj WW: 734 Ratio: 106  
 Adj. YW: 1358 Ratio: 105  
 ADG: 3.89 Ratio: 103  
 ProS: 121, 25% HB: 71, 17%  
 GM: 50, 50% **zoetis**

|     | CED | BW   | WW | YW  | Milk | ME | MARB | REA  | Fat | CW | YG    |
|-----|-----|------|----|-----|------|----|------|------|-----|----|-------|
| EPD | 13  | -1.8 | 59 | 101 | 26   | 2  | 0.47 | 0.18 | 0   | 7  | -0.07 |
| %   | 42  | 49   | 76 | 58  | 47   | 38 | 39   | 39   | 15  | 94 | 4     |

This bull comes from a herd sire that we raised. He's got perfect feet and all of his daughters have great udders. His dam is also highly productive, with an MPPA of 107.







Lot 52

## GLC PRIME TIME 1084

52

DOB: 03-14-2024    Reg #: 4992379    BRAND: 1084

LSF SRR PRIME FACTOR 9014G  
**GLC PRIME TIME 5542**  
 S BAR U SONJA 554

LSF MEW X-FACTOR 6693D  
**GLC SONJA 108**  
 S BAR U SONJA 949

BW: 89  
 Adj WW: 795    Ratio: 115  
 Adj. YW: 1404    Ratio: 109  
 ADG: 3.8    Ratio: 101  
 ProS: 97, 61%    HB: 16, 97%  
 GM: 80, 6%    **zoetis**

|     | CED | BW   | WW | YW  | Milk | ME | MARB | REA  | Fat  | CW | YG   |
|-----|-----|------|----|-----|------|----|------|------|------|----|------|
| EPD | 10  | -1.3 | 78 | 124 | 31   | 13 | 0.83 | 0.22 | 0.05 | 32 | 0.15 |
| %   | 87  | 58   | 11 | 14  | 7    | 93 | 4    | 32   | 95   | 21 | 87   |

Here is a ¼ brother to lot 49. If you like the genetics, but don't want quite as much growth, this bull is a great option. He's got a stylish build from front-to-back, and he's got the pedigree to back it up.

*Can't make the sale?*  
 BID ONLINE AT  
[WWW.DVAUCTION.COM](http://WWW.DVAUCTION.COM)



## GLC AXL 2254

53

DOB: 02-20-2024 Reg #: 4992383 BRAND: 2254

LSF MEW X-FACTOR 6693D  
**GLC X-FACTOR 5631**  
 S BAR U MEGAN 563

FORSTER BLOCKADE E046  
**GLC JENNA 225**  
 S BAR U JENNA 545

BW: 80  
 Adj WW: 734 Ratio: 106  
 Adj. YW: 1382 Ratio: 107  
 ADG: 4.04 Ratio: 107  
 ProS: 75, 88% HB: 50, 56%  
 GM: 25, 93% **zoetis**

|     | CED | BW  | WW | YW  | Milk | ME | MARB | REA   | Fat  | CW | YG   |
|-----|-----|-----|----|-----|------|----|------|-------|------|----|------|
| EPD | 10  | 0.8 | 82 | 132 | 25   | 9  | 0.25 | -0.04 | 0.02 | 23 | 0.11 |
| %   | 88  | 90  | 6  | 7   | 62   | 78 | 89   | 82    | 48   | 55 | 73   |

This bull is a ¼ brother to the Grand Champion Red Angus Bull at the 2025 BHSS.



Lot 53

## GLC PROFIT 9494

54

DOB: 03-04-2024 Reg #: 4992341 BRAND: 9494

H2R PROFITBUILDER B403  
**GLC PROFITBUILDER 5699**  
 S BAR U ANGEL 569

3SCC DOMAIN A163  
**S BAR U SONJA 949**  
 S BAR U SONJA 718

BW: 88  
 Adj WW: 736 Ratio: 106  
 Adj. YW: 1290 Ratio: 100  
 ADG: 3.46 Ratio: 92  
 ProS: 54, 98% HB: 32, 86%  
 GM: 22, 95% **zoetis**

|     | CED | BW   | WW | YW  | Milk | ME | MARB | REA  | Fat  | CW | YG   |
|-----|-----|------|----|-----|------|----|------|------|------|----|------|
| EPD | 11  | -1.1 | 60 | 100 | 26   | 4  | 0.22 | 0.02 | 0.02 | 15 | 0.08 |
| %   | 76  | 63   | 70 | 62  | 43   | 50 | 92   | 71   | 63   | 79 | 58   |



Lot 54

## GLC STOCK YARD 9454

55

DOB: 03-04-2024 Reg #: 4992335 BRAND: 9454

BIEBER CL STOCKMARKET E119  
**LEM STOCKYARD 2001 ET**  
 LEM ONEKIND 934 ET

3SCC DOMAIN A163  
**GLC TINKERBELL 945**  
 GLC TINKERBELL 704

BW: 68  
 Adj WW: 695 Ratio: 100  
 Adj. YW: 1288 Ratio: 100  
 ADG: 3.7 Ratio: 98  
 ProS: 140, 8% HB: 71, 17%  
 GM: 69, 16% **zoetis**

|     | CED | BW   | WW | YW  | Milk | ME | MARB | REA  | Fat  | CW | YG  |
|-----|-----|------|----|-----|------|----|------|------|------|----|-----|
| EPD | 22  | -6.6 | 62 | 102 | 25   | 6  | 0.79 | 0.08 | 0.06 | 27 | 0.2 |
| %   | 1   | 1    | 63 | 57  | 58   | 62 | 5    | 59   | 98   | 34 | 97  |

\*\*This bull is TOP 1% for Calving Ease. HEIFER BULL!



Lot 55

## GLC AXL 2414

56

DOB: 02-20-2024 Reg #: 4992403 BRAND: 2414

LSF MEW X-FACTOR 6693D  
**GLC X-FACTOR 5631**  
 S BAR U MEGAN 563

FEDDES FRONT ROW C78-0240  
**GLC TINKERBELL 241**  
 GLC TINKERBELL 086

BW: 83  
 Adj WW: 720 Ratio: 104  
 Adj. YW: 1322 Ratio: 102  
 ADG: 3.75 Ratio: 99  
 ProS: 99, 57% HB: 54, 48%  
 GM: 46, 62% **zoetis**

|     | CED | BW   | WW | YW  | Milk | ME | MARB | REA  | Fat  | CW | YG   |
|-----|-----|------|----|-----|------|----|------|------|------|----|------|
| EPD | 11  | -1.2 | 66 | 106 | 29   | 10 | 0.37 | 0.29 | 0.01 | 27 | 0.01 |
| %   | 77  | 61   | 49 | 45  | 22   | 83 | 68   | 22   | 41   | 36 | 23   |

## CCTS GLC AXL 2364

57

DOB: 4/8/24 Reg #: 4992417 BRAND: 2364

LSF MEW X-FACTOR 6693D  
**GLC X-FACTOR 5631**  
 S BAR U MEGAN 563

FORSTER BLOCKADE E046  
**CCTS GLC LIZZIE 236**  
 S BAR U LIZZIE 955

BW: 104  
 Adj WW: 815 Ratio: 106  
 Adj. YW: 1402 Ratio: 104  
 ADG: 3.62 Ratio: 101  
 ProS: 45, 99% HB: -14, 99%  
 GM: 59, 31% **zoetis**

|     | CED | BW  | WW | YW  | Milk | ME | MARB | REA  | Fat  | CW | YG   |
|-----|-----|-----|----|-----|------|----|------|------|------|----|------|
| EPD | 5   | 3.2 | 87 | 137 | 23   | 11 | 0.51 | 0.28 | 0.01 | 32 | 0.04 |
| %   | 99  | 99  | 2  | 4   | 78   | 88 | 31   | 23   | 38   | 20 | 33   |



58

# GLC AXL 2274

DOB: 02-27-2024 Reg #: 4992385 BRAND: 2274

LSF MEW X-FACTOR 6693D  
**GLC X-FACTOR 5631**  
 S BAR U MEGAN 563

LSF SRR PRIME FACTOR 9014G  
**GLC TINKERBELL 227**  
 GLC TINKERBELL 704

BW: 72  
 Adj WW: 726 Ratio: 105  
 Adj. YW: 1251 Ratio: 97  
 ADG: 3.27 Ratio: 87  
 ProS: 116, 32% HB: 59, 37%  
 GM: 56, 35% **zoetis**

|     | CED | BW   | WW | YW  | Milk | ME | MARB | REA  | Fat  | CW | YG   |
|-----|-----|------|----|-----|------|----|------|------|------|----|------|
| EPD | 14  | -1.6 | 82 | 131 | 28   | 11 | 0.73 | 0.05 | 0.05 | 29 | 0.18 |
| %   | 35  | 54   | 6  | 7   | 29   | 87 | 8    | 65   | 93   | 30 | 94   |

59

# GLC FREE STYLE 0734

DOB: 03-03-2024 Reg #: 4992347 BRAND: 734

BIEBER DEEP END B597  
**SUTH FREE STYLE 38G**  
 SUTH TRILOGY BEAUTY 5059

3SCC DOMAIN A163  
**GLC SONJA 073**  
 S BAR U SONJA 572

BW: 70  
 Adj WW: 649 Ratio: 94  
 Adj. YW: 1204 Ratio: 93  
 ADG: 3.46 Ratio: 92  
 ProS: 93, 66% HB: 43, 70%  
 GM: 50, 49% **zoetis**

|     | CED | BW   | WW | YW  | Milk | ME | MARB | REA  | Fat  | CW | YG   |
|-----|-----|------|----|-----|------|----|------|------|------|----|------|
| EPD | 16  | -2.6 | 64 | 106 | 26   | 14 | 0.41 | 0.26 | 0.03 | 28 | 0.08 |
| %   | 12  | 35   | 56 | 45  | 43   | 93 | 51   | 25   | 79   | 31 | 57   |





# GLC PROFIT 8284

**60**

DOB: 03-18-2024 Reg #: 4992329 BRAND: 8284

H2R PROFITBUILDER B403  
**GLC PROFITBUILDER 5699**  
 S BAR U ANGEL 569

BROWN AA PRESTIGIOUS B5153  
**GLC ANGEL 828**  
 S BAR U ANGEL 504

BW: 88  
 Adj WW: 653 Ratio: 94  
 Adj. YW: 1215 Ratio: 94  
 ADG: 3.51 Ratio: 93  
 ProS: 92, 67% HB: 43, 70%  
 GM: 49, 51% **zoetis**

|     | CED | BW | WW | YW | Milk | ME | MARB | REA   | Fat  | CW | YG   |
|-----|-----|----|----|----|------|----|------|-------|------|----|------|
| EPD | 10  | -1 | 59 | 96 | 18   | -1 | 0.47 | -0.06 | 0.02 | 19 | 0.12 |
| %   | 82  | 65 | 73 | 68 | 98   | 28 | 39   | 85    | 63   | 69 | 77   |



Lot 60

# GLC AXL 2344

**61**

DOB: 03-02-2024 Reg #: 4992395 BRAND: 2344

LSF MEW X-FACTOR 6693D  
**GLC X-FACTOR 5631**  
 S BAR U MEGAN 563

LASO FRONT ROW X37D  
**GLC TINKERBELL 234**  
 GLC TINKERBELL 947

BW: 76  
 Adj WW: 706 Ratio: 102  
 Adj. YW: 1223 Ratio: 95  
 ADG: 3.22 Ratio: 85  
 ProS: 100, 72% HB: 42, 72%  
 GM: 58, 33% **zoetis**

|     | CED | BW   | WW | YW | Milk | ME | MARB | REA  | Fat  | CW | YG   |
|-----|-----|------|----|----|------|----|------|------|------|----|------|
| EPD | 14  | -0.5 | 65 | 99 | 31   | 12 | 0.53 | 0.13 | 0.02 | 40 | 0.14 |
| %   | 35  | 75   | 51 | 62 | 11   | 90 | 28   | 48   | 55   | 6  | 84   |





# BLACK ANGUS REFERENCE SIRES

## Tehama Patriarch F028



DOB: 2/3/17 Reg #: 18981191 BRAND: F028

Hoover Dam  
S S Niagara Z29  
Jet S S X144

Connealy Thunder  
Tehama Elite Blackbird D826  
Tehama Elite Blackbird Z630

BW: 62  
Adj WW: 589  
WW Ratio: 95  
Adj. YW: 1123  
YW Ratio: 102

|     | CED | BW   | WW | YW  | Milk | MARB | REA  | Fat   | CW |
|-----|-----|------|----|-----|------|------|------|-------|----|
| EPD | 14  | -1.7 | 69 | 134 | 29   | 0.95 | 0.74 | 0.039 | 54 |
| %   | 5   | 5    | 40 | 25  | 30   | 20   | 35   | 75    | 40 |

## GLC Tahoe 281



DOB: 2/16/21 Reg #: 20110685 BRAND: 281

Tehama Upward Y238  
Tehama Tahoe B767  
Tehama Mary Blackbird T073

V D A R Cedar Wind 1064  
GLC Cherry 932  
Garrigan Cherry 544

BW: 84  
Adj WW: 671  
WW Ratio: 114  
Adj. YW: 1309  
YW Ratio: 116

|     | CED | BW  | WW | YW  | Milk | MARB | REA  | Fat    | CW |
|-----|-----|-----|----|-----|------|------|------|--------|----|
| EPD | 5   | 0.6 | 76 | 130 | 23   | 0.54 | 0.76 | -0.037 | 48 |
| %   | 60  | 35  | 25 | 30  | 65   | 55   | 35   | 10     | 55 |

## Virginia Tech Statesman



DOB: 1/16/21 Reg #: 20085208 BRAND: 1J3

S S Niagara Z29  
Tehama Patriarch F028  
Tehama Elite Blackbird D826

Ellingson Homestead 6030  
Vpi 310A Rita 9G6 Et  
AED Rita 310A

BW: 78  
Adj WW: 708  
WW Ratio: 112  
Adj. YW: -  
YW Ratio: -

|     | CED | BW  | WW | YW  | Milk | MARB | REA  | Fat   | CW |
|-----|-----|-----|----|-----|------|------|------|-------|----|
| EPD | 4   | 1.7 | 88 | 164 | 24   | 1.18 | 0.74 | 0.115 | 79 |
| %   | 70  | 60  | 5  | 2   | 60   | 10   | 35   | 95    | 4  |

## WAR Payback 8536-1163



DOB: 3/7/21 Reg #: 20144534 BRAND: 1163

Basin Payweight 1682  
WAR Payback 4132-740  
WAR Elvina 294-4132

Comrade Total JF8235  
Comrade Hand 8536JF  
Diamond J Blackbird Lady 5363

BW: 79  
Adj WW: 793  
WW Ratio: -  
Adj. YW: -  
YW Ratio: -

|     | CED | BW  | WW | YW  | Milk | MARB | REA  | Fat   | CW |
|-----|-----|-----|----|-----|------|------|------|-------|----|
| EPD | 13  | 0.1 | 70 | 124 | 29   | 0.45 | 0.27 | 0.082 | 51 |
| %   | 10  | 25  | 40 | 40  | 30   | 65   | 90   | 95    | 50 |

## Connealy Craftsman



DOB: 11/13/20 Reg #: 20132505 BRAND: 070R

Sitz Stellar 726D  
Sitz Resilient 10208  
Sitz Miss Burgess 4381

Connealy Niobrara 5451  
Black Cathy of Conanga 8521  
Black Carla of Conanga 450

BW: 81  
Adj WW: 712  
WW Ratio: 120  
Adj. YW: 1250  
YW Ratio: 119

|     | CED | BW  | WW | YW  | Milk | MARB | REA  | Fat  | CW |
|-----|-----|-----|----|-----|------|------|------|------|----|
| EPD | 2   | 1.8 | 74 | 130 | 36   | 1.06 | 0.83 | 0.03 | 43 |
| %   | 80  | 65  | 30 | 30  | 5    | 15   | 30   | 65   | 65 |

## GLC Coalition 170



DOB: 3/11/20 Reg #: 19818265 BRAND: 170

HF Syndicate 213Z  
U-2 Coalition 206C  
U-2 Erelite 109Z

VDAR Cedar Wind 1044  
GLC Queen 629  
Garrigan Queen 4N1

BW: 89  
Adj WW: 618  
WW Ratio: 100  
Adj. YW: 1239  
YW Ratio: 103

|     | CED | BW  | WW | YW  | Milk | MARB | REA  | Fat    | CW |
|-----|-----|-----|----|-----|------|------|------|--------|----|
| EPD | 3   | 3.4 | 55 | 106 | 29   | 0.33 | 0.25 | -0.039 | 40 |
| %   | 75  | 90  | 75 | 65  | 30   | 80   | 90   | 5      | 70 |

## Sitz Spectrum



DOB: 2/14/20 Reg #: 19905840 BRAND: 0060

LD Capitalist 316  
Musgrave 316 Exclusive  
Musgrave Prim Lassie 163-386

Sitz Bull Durham 10308  
Sunrise Lady Donna 003  
Sitz Lady Donna 217

BW: 91  
Adj WW: 762  
WW Ratio: -  
Adj. YW: -  
YW Ratio: -

|     | CED | BW  | WW | YW  | Milk | MARB | REA  | Fat   | CW |
|-----|-----|-----|----|-----|------|------|------|-------|----|
| EPD | 11  | 0.3 | 79 | 140 | 26   | 0.56 | 0.97 | 0.027 | 70 |
| %   | 20  | 30  | 20 | 15  | 50   | 55   | 15   | 65    | 15 |

## TCAR Southern Son 2020



DOB: 2/25/22 Reg #: 20614007 BRAND: 2020

BUBS Southern Charm AA31  
BUBS Southern Son 33C  
BUBS Lula 9Z

Deep Creek Holiday 836  
TCAR Winnie Blackbird 0052  
TCAR Winnie Blackbird 6020

BW: 84  
Adj WW: 713  
WW Ratio: 109  
Adj. YW: -  
YW Ratio: -

|     | CED | BW | WW | YW  | Milk | MARB | REA  | Fat   | CW |
|-----|-----|----|----|-----|------|------|------|-------|----|
| EPD | 3   | 3  | 78 | 124 | 25   | 0.22 | 0.95 | -0.01 | 59 |
| %   | 75  | 85 | 20 | 40  | 55   | 90   | 15   | 25    | 30 |



# RED ANGUS REFERENCE SIRES



## LEM Stockyard 2001 ET

DOB: 1/15/22 Reg #: 4659179 BRAND: 2001

PIE Stockman 4051  
**Bieber CL Stockmarket E119**  
 Bieber CL Adelle 475C

PIE One Of A Kind 352  
**LEM OneKind 943 ET**  
 LEM MS Direction 712 ET

BW: 74  
 Adj WW: 694  
 WW Ratio: -  
 Adj. YW: 1318  
 YW Ratio: -

|     | CED | BW   | WW | YW  | Milk | MARB | REA  | Fat  | CW |
|-----|-----|------|----|-----|------|------|------|------|----|
| EPD | 19  | -4.5 | 80 | 135 | 23   | 0.84 | 0.27 | 0.04 | 48 |
| %   | 4   | 11   | 12 | 9   | 74   | 6    | 26   | 79   | 6  |



## GLC Prime Time 5542

DOB: 2/25/22 Reg #: 4661727 BRAND: 5542

LSF MEW X-Factor 6693D  
**LSF SRR Prime Factor 9014G**  
 LSF SRR Raindanc A3045 E7254

Tradition 81C SCN  
**S Bar U Sonja 554**  
 S Bar U Sonja 235

BW: 94  
 Adj WW: 680  
 WW Ratio: 114  
 Adj. YW: 1389  
 YW Ratio: 125

|     | CED | BW   | WW | YW  | Milk | MARB | REA  | Fat  | CW |
|-----|-----|------|----|-----|------|------|------|------|----|
| EPD | 10  | -0.9 | 81 | 138 | 28   | 0.79 | 0.26 | 0.05 | 43 |
| %   | 78  | 64   | 11 | 7   | 29   | 8    | 27   | 94   | 9  |



## Suth Free Style 38G

DOB: 2/15/19 Reg #: 4128342 BRAND: 38G

Bieber Rollin Deep Y118  
**Bieber Deep End B597**  
 Bieber Laura 158W

GMRA Trilogy 0226  
**Suth Trilogy Beauty 5059**  
 Suth MT Beauty 9119

BW: 92  
 Adj WW: 719  
 WW Ratio: 121  
 Adj. YW: 1406  
 YW Ratio: 121

|     | CED | BW  | WW | YW  | Milk | MARB | REA  | Fat | CW |
|-----|-----|-----|----|-----|------|------|------|-----|----|
| EPD | 11  | 0.5 | 89 | 152 | 31   | 0.34 | 0.54 | 0   | 52 |
| %   | 72  | 83  | 4  | 2   | 14   | 65   | 7    | 17  | 4  |



## GLC Profitbuilder 5699

DOB: 3/6/19 Reg #: 4161834 BRAND: 5699

LSF Takeover 9943W  
**H2R Profitbuilder B403**  
 Brown Ms P707 Y6674

C-Bar Evolution 107Y  
**S Bar U Angel 569**  
 S Bar U Angel 343

BW: 87  
 Adj WW: 654  
 WW Ratio: 102  
 Adj. YW: 1080  
 YW Ratio: 102

|     | CED | BW   | WW | YW  | Milk | MARB | REA   | Fat  | CW |
|-----|-----|------|----|-----|------|------|-------|------|----|
| EPD | 12  | -1.5 | 60 | 101 | 21   | 0.44 | -0.09 | 0.02 | 12 |
| %   | 63  | 53   | 73 | 61  | 83   | 47   | 83    | 49   | 83 |



## GLC X-Factor 5631

DOB: 2/24/21 Reg #: 4468737 BRAND: 5631

Redhill Ten X 104U 190A  
**LSF MEW X-Factor 6693D**  
 MEW Covergirl 402B

CTS S Bar U Nebula 320  
**S Bar U Megan 563**  
 S Bar U Megan 332

BW: 76  
 Adj WW: 656  
 WW Ratio: 113  
 Adj. YW: 1227  
 YW Ratio: 114

|     | CED | BW  | WW | YW  | Milk | MARB | REA  | Fat  | CW |
|-----|-----|-----|----|-----|------|------|------|------|----|
| EPD | 9   | 0.6 | 84 | 141 | 29   | 0.57 | 0.11 | 0.03 | 40 |
| %   | 85  | 84  | 8  | 5   | 27   | 6    | 50   | 63   | 13 |



Here's our favorite sale ring supervisors!



# IN *Loving* MEMORY



It's been a tough year in our neighborhood. Recently, we lost a couple of our closest neighbors who are also dear friends. Both men were also loyal bull customers who have been with us since our first sale. Our thoughts and prayers continue to be with their families.



*Kevin Keegan*

Kevin has been our neighbor for the past 5 years. In that time, he helped us with countless projects, told us many stories, and worked cows back-and-forth with us numerous times. Kevin was our go-to guy, and he became one of our best friends. He is the epitome of a "good guy." In fact, he was nothing less than a truly great guy. We miss him daily. Rest easy, my friend.



*Bud Longbrake*

Bud has been our neighbor since we moved here. He'd call every so often just to see how we were doing. It didn't matter who answered the phone, he would visit with anyone. We will miss our annual trip to "fix the creek" on our border fence. It will be awful quiet fixing it alone this year. Rest easy, my friend.











*Thank You*  
FOR YOUR SUPPORT & INTEREST IN OUR PROGRAM











16699 216th Ave.  
Dupree, SD 57623



For sale videos and more information  
visit our website: [www.GarriganCattle.com](http://www.GarriganCattle.com)