



ANNUAL PRODUCTION SALE / FRIDAY, MARCH 28, 2025
1:00 PM / AT THE RANCH NEAR BANCROFT, IDAHO

**PROFITABLE BALANCED BREEDING,
SUPERIOR IN FUNCTION**





We would like to invite you to our 15th Annual Production Sale. We truly appreciate your interest and continued support to our program. Yes, we have a program, based on home raised genetics that have proven themselves in our real-world ranch environment. Every animal in our sale offering was bred, born, and raised here.

The bulls on offer are raised in a 30-acre snow covered pasture after weaning and fed no more than 7 lbs. of grain per head and long stem grass – alfalfa mixed hay. We provide them with salt, mineral, spring water and a straw pack. They run in one herd and are managed as one contemporary group. We PAP test here on the ranch at 5650 feet elevation.

No smoke and mirrors or inflated EPD's here. We strive to raise honest cattle that can go out and work for the commercial ranchers. While the top end of our bulls are of breeder quality. Our bulls sell for realist prices, and we will sell them in catalog order. We will have the herd bulls and cowherd within close proximity for viewing. We host a live auction and bring the cattle into the sale ring to sell.

There is a difference here and would love to show you why we operate our program against the grain. We chart our own genetic path and don't follow the fads. Be a lion not a sheep.

We once again offer to feed the yearling bulls until May 1, 2025, at no charge.

Please join us for a smoked brisket lunch that will be served from 11:00 am – 1:00 pm on sale day.

Dirk and Marnie Johnson

Cell: 208-390-6619 / simroot57@yahoo.com
2055 Ivins Road • Bancroft, ID 83217

www.verticaledgegenetics.com

**ANNUAL PRODUCTION SALE / FRIDAY, MARCH 28, 2025
1:00 PM / AT THE RANCH NEAR BANCROFT, IDAHO
LUNCH - SMOKED BRISKET STARTING AT 11:00**

OFFERING OVER 100 HEAD / 68 REGISTERED YEARLING BULLS
[Negative BVD-PI Tested, Performance Tested, Fertility Tested and PAP Tested]

**3 REGISTERED 100% FULLBLOOD FLECKVIEH HEIFERS,
25 COMMERCIAL YEARLING HEIFERS [SIRE IDENTIFIED], 2 DRAFT HORSE TEAMS**



SALE DAY PHONES

Dirk Johnson208-390-6619
Marnie Johnson208-540-2697
Riley Mickelson208-989-0800

SALE LOCATION

2055 Ivins Road, Bancroft, Idaho 83217
30 miles East of I-15 on Hwy 30. Do not take the Bancroft turn off. Go to the intersection of Hwy 30 and Hwy 34 (Grace turnoff) turn North onto Old Hwy 30 (frontage road) continue West for 2 miles. Then turn right onto Ivins Road, cross railroad tracks, then 4 miles to the ranch.

AUCTIONEER & STAFF

Kade Rogge, Auctioneer 208-431-0074
Mark Schumann, Ringman 208-339-0580
Jed South, Ringman 208-670-4042
Riley Mickelson, Special Assignment 208-989-0800

SALE ORDER

Cattle will sell in catalog order beginning with Lot 1.

LIABILITY

All persons who attend the sale do so at their own risk, and Vertical Edge Genetics assumes no liability, legal or otherwise for any accidents which may occur.

ANNOUNCEMENTS

Announcements from the block will take precedence over information in this sale book. Cattle will sell in catalog order.

INSURANCE

Insurance will be made available to new owners at the clerk's desk.

TRUCKING

Please leave detailed information with sale clerk about trucking needs and arrangements. We will work to help you find the best and most efficient means for hauling. We can assist in delivery of bulls to your ranch.

FEEDING

We will offer to feed the yearling bulls at no charge until May 1, 2025, if desired. At that time, we will arrange trucking options. We are not responsible for any injury or death to the bulls while in our care. We would recommend insuring the animal.

VET SERVICES

Dr. Daniel Erickson, DVM 307-887-8838

VIDEO

Videos will be available online two weeks prior to the sale at www.verticaledgegenetics.com

TERMS & CONDITIONS

All cattle will sell under the American Simmental Association's terms and conditions. You can view online at <https://www.simmental.org/site/userimages/sale%20terms.pdf>

RESOURCES

We have our cow herd in the Total Herd Enrollment program with the American Simmental Association. All the bulls on offer will have ASA based EPDs, so there is no need to use adjustment factors for the Angus. EPDs current as of February 27, 2025. Updated EPDs can be viewed on the American Simmental Association website.



HERD HEALTH

All cattle selling are pedigree free of known genetic defects including AM, NH, CA, DD and TH.

BULLS

- 2x 8-way vaccine
- 2x Fusoguard (Hoof Rot) vaccine
- 2x Bovi-shield Gold One Shot vaccine
- 2x Multimin 90
- Poured with Clean-Up
- Dewormed with Valbazen
- PCR Trich Test
- Semen and PAP tested

HEIFERS

- 2x 8-way vaccine
- 1x Preg Guard 10
- 1x Multimin 90
- Poured with Clean-Up
- Dewormed with Valbazen
- Calfhod vaccinated

SIGHT UNSEEN PURCHASE PROGRAM

We know our cattle and cow families very well and are happy to share our knowledge with you to help you make an informed decision. If you are unable to attend the sale and are interested in a bull or heifer, give Dirk a call and he will personally go over the sale cattle for your program to recommend bulls or heifers that will suit your needs. Your complete satisfaction is our goal! You are welcome to leave a bid with any of the sales staff. Cattle will sell in catalog order.

ABSENTEE BIDDING

We will sell animals in catalog order. If preferred, we can have someone call you on specific lots with prior arrangements. We will also have a few phone lines dedicated to bidding on sale day but please make arrangements prior to 11:00 am on sale day. We are also happy to announce that we will have CCI.LIVE on the scene offering online bidding.



Watch the Sale

“Broadcasting Live” on CCI.live!

www.CCI.live - Live Online Bidding
 (405) 400-9505 Text/Call - schedule@cci.live
 Find us on the App Store and Google Play
Over 35 years in livestock marketing!

FIRST YEAR BREEDING GUARANTEE

All bulls selling for over \$4000 or more will be given 50% of the value of the injured bull, minus any salvage value, in a future sale or toward a replacement bull, if one is available. All injured bulls must be diagnosed by a veterinarian. Please notify us as soon as possible should injury occur and prior to the injured bull being sold for salvage. All claims must be made by September 1, 2025. Breeding season is defined as the 90-day period following the first turnout of the bulls. A copy of the sales receipt must be received by Vertical Edge Genetics to receive proper credit.



SPRINGCREEK ADVANCE 118H

DOB. 1/28/20 • ASA#. 3939153 • Tattoo. MBJ 118H

LFEBISS BLACKADVANCE426U
IPU ADVANCE 144Z
 IPU MS. BLACKBIRD 223T

LFE MCDAVID 413C
SPRINGCREEK ABBEY 99E
 SPRINGCREEK ABBEY 10Z

REMINGTON ON TARGET 2S
 LFE BILLY 80M
 GOLDEN OPPORTUNITYHRR851
 IPU 364C BLACKBRID 140P
 LFE GOTHAM 819Y
 LFE HEAVEN SENT 30X
 HARVIE JDFWALLBANGER111X
 SPRINGCREEK LINNE 49R

CE	BW	WW	YW	MCE	Milk	DOC	YG	Marb	REA	API
2.7	5.9	91.0	128.8	-1.5	17.8	13.0	-0.44	-0.05	1.05	101.4

"8 Ball" was our selection at the 2021 Springcreek sale. He is a masterfully bred purebred with uncommon depth and power! PAP 35 at 3 years. His first daughters are now calving and look very nice. His sons are growth and power bulls with added stoutness and sound structured. Homozygous Polled, Homozygous Black.



TCM TRI-STAR MR. BRICK 50G

DOB. 2/19/19 • ASA#. 3861729 • Tattoo. THOM 50G

SVS AMARILLO 535C
SRH BRICK 53E
 SRH MISS MAKER 65B

SILVERLAKE ZEEMAN
SILVERLAKE FANCY 184C
 WXR REPATHS MISS 63W

SVS CAPTAIN MORGAN 11Z
 SVS RED SATIN 38Y
 LFE PLAYMAKER 447X
 IPU MS. RED SPECIALIST 7Y
 CHAMPS MUSCLE TECH
 TATSHENSHINI MISS 64R
 SBSF LIEUTENANT 5L
 BLCC MISS FANCY 45F

CE	BW	WW	YW	MCE	Milk	DOC	YG	Marb	REA	API
8.2	3.3	68.5	106.4	6.2	26.4	-0.1	-0.47	0.01	0.76	121.8

"Brick" has done a tremendous job for us by adding power, length, and thickness to his progeny. We love the fact that he is 50% Fleckvieh with an outcross pedigree. Real world grunt and power. PAP 40 at 3 years.



S/M HALFBACK H081

DOB. 2/20/20 • ASA#. 3731433 • Tattoo. H081

IPU RADIUM 20A
S/M DIESEL D141
 S/M FRANCESCA B141

PHS BANK ROLL 345B
S/M ROSE ANN F081
 S/M RACHEL D061

CROSSROAD RADIUM 789U
 IPU MS. LAREDO 107Y
 ANCHOR T LEGEND 7H
 S/M FRANCESCA Z121
 SIBELLE DIRTY HARRY 25Z
 PHS YUMA
 ANCHOR T LEGEND 7H
 S/M RENA B041

CE	BW	WW	YW	MCE	Milk	DOC	YG	Marb	REA	API
14.9	0.5	69.7	101.6	7.8	34.1	11.0	-0.55	-0.06	0.85	124.6

Halfback has proven to be an excellent calving ease sire that has awesome feet and thickness. We are just calving a few of his daughters and they are sappy bellied and very maternal. Homozygous Polled. 100% Fullblood Fleckvieh.

VE CUT R ECLIPSE 32J

DOB. 3/10/21 • ASA#. 3986784 • Tattoo. 32J

MFI CENTER CUT 2291
VE-EDP CUT RIGHT 362E
 GOLDEN DAWN MS STROLLER

KCC SAGINAW 6W
VE SAG ELLIPSE 431B
 JBD ELLY 231S

O C C TOTAL 616T
 MFI BLACK LOLITA 9037
 SIM-ROC STROLLER
 362U
 DCC NEW LOOK 101
 KCC 26J
 3C PICASSO F955 BZ
 VE 9288 ANGUS

CE	BW	WW	YW	MCE	Milk	DOC	YG	Marb	REA	API
12.6	0.9	66.2	99.0	7.5	15.4	9.5	-0.18	0.09	0.46	103.8

We collected semen on this stud after he sold in the 2022 sale to Pugsley Ranch. He has calved well on heifers and we look to use him in our program even more. Homozygous Black, Homozygous Polled.



WOLFE HOLT FF 306H

DOB. 4/19/20 • ASA#. 4127755 • Tattoo. TWW 306H

SOUTHSEVEN MR ADONIS 96Z
BLACK GOLD ELEVATION 20E
 BLACK GOLD MS FLORA 84B

CHERRY CREEK CARLSBERG 2S
SWANTEWITT BOLLY 306B
 SWANTEWITT HOLLY 80W

BLCC MR ADONIS 30X
 SOUTH SEVEN MISS 70S
 BAR 5 FF HEXAGON 412Y
 MFI FLORIA 6144
 SHAWACRES JAHARI 50L
 K2 ANDREA 6C
 SALMON ARM ELTANO
 SWANTEWITT MISTLETOE 55M

CE	BW	WW	YW	MCE	Milk	DOC	YG	Marb	REA	API
8.6	3.6	68.7	94.3	6.5	37.9	12.2	-0.52	-0.11	0.85	107.5

Holt is an aggressive breeding bull that really checks the cows well but is very easy to handle. We have long admired his sire and comes from a Jahari bred dam. Fullblood Fleckvieh. PAP 32.



OCC REAR AXLE 270J

DOB. 1/25/21 • ASA#. 4178196 • Tattoo. 270J

O C C HOMER 650H
O C C REAR END 751R
 FCC REVOLUTION ROSE 995N

O C C JET STREAM 825J
OCC PAISLEY 160P
 MISS ARNOLD E5568

O C C FOCUS 813F
 O C C DIXIE ERICA 816B
 O C C JOKER 620J
 O C C REVOLUTION ROSE 887H
 O C C EMBLAZON 854E
 O C C JUANADA 968G
 PANZER
 MISS ARNOLD A5225

CE	BW	WW	YW	MCE	Milk	DOC	YG	Marb	REA	API
9.5	1.0	61.4	88.6	3.4	23.5	11.1	-0.06	0.25	0.29	112.1

A unique breeding piece that mated well with our home grown genetics. Homozygous Black, Smooth Polled. 1/4 SM 3/4 AN.



SIMANGUS

We have been breeding multi-generational SimAngus cattle for many years. We have found more predictability and functionality in our herd by linebreeding to the genetics which have excelled in our environment. We love the performance, mothering ability and fertility in our SimAngus cows. Newborn calf vigor is excellent, marketing demand for SimAngus sired calves is strong, and they produce a superior end product. Our prefix has included JB, JBD, and now VE and dates back to 1983. We have found the Fleckvieh influenced SimAngus to be superior to the average SimAngus cattle. Our focus will remain to offer these FleckAngus bulls in volume, unlike those available elsewhere.



LOT 1



LOT 2

BULL

VE ADVANCE EFTON 30M

DOB. 3/19/24 • ASA#. 4491397 • Tattoo. 30M

Act BW. 87 • WR. 95 • YR. 98 • SC. 36.0 • PAP. 33

IPU ADVANCE 144Z
SPRINGCREEK ADVANCE 118H
SPRINGCREEK ABBEY 99E

O C C JET STREAM 825J
VE JET EFFECT 505C
VE BH EFFECT 404A

LFEISS BLACKADVANCE426U
IPU MS. BLACKBIRD 223T
LFE MCDAVID 413C
SPRINGCREEK ABBEY 10Z

O C C EMBLAZON 854E
O C C JUANADA 968G
HD DUNN ABOVE PAR 8200
VE BK EFFIE 35X

CE	BW	WW	YW	MCE	Milk	DOC	YG	Marb	REA	API
7.4	2.6	66.5	100.1	0.4	21.0	14.2	-0.22	0.09	0.62	110.6

Polled, Solid Black, 5/8 SM 3/8 AN. Moderate, sound, and highly recommended! The three cows behind him are all in the herd and have been strong producers. Dam's production 8 @ 99, Grand dam's production 3 @ 103. NEOGEN GGP.

BULL

VE HALFBACK ELITE 36M

DOB. 3/22/24 • ASA#. 4491324 • Tattoo. 36M

Act BW. 86 • WR. 92 • YR. 100 • SC. 37.0 • PAP. 37

S/M DIESEL D141
S/M HALFBACK H081
S/M ROSE ANN F081

KCC SAGINAW 6W
VE SAG ELLY 430B
JBD ELLY 231S

IPU RADIUM 20A
S/M FRANCHESCA B141
PHS BANK ROLL 345B
S/M RACHEL D061
DCC NEW LOOK 101
KCC 26J
3C PICASSO F955 BZ
VE 9288 ANGUS

CE	BW	WW	YW	MCE	Milk	DOC	YG	Marb	REA	API
11.3	1.5	60.3	93.0	6.9	30.3	11.0	-0.41	0.16	0.61	127.2

Homozygous Polled, Black Star, 3/4 SM 1/4 AN. The natural calf from donor cow 430B. Our lead off bull that represents our "trail breaking" genetics very well. Half Fleckvieh with breeder quality! Dam's production 7@104, Grand dam's production 9@102. Retaining 1/2 semen interest. NEOGEN GGP

BULL

VE ROSTER EVEREST 4M

DOB. 2/24/24 • ASA#. 4491308 • Tattoo. 4M

Act BW. 83 • WR. 103 • YR. 97 • SC. 37.0 • PAP. 37

O C C JUNEAU 807J
VE JUNEAU ROSTER 1J
MEYER ROSETTA 213Z

MOUNTAIN BOYZ GUERRERO
VE MBG EEEVE 215K
RICH`S EEEVE 78E

O C C EMBLAZON 854E
O C C DIXIE ERICA 903E
SOO LINE MOTIVE 9016
FCC ROSETTA 824U
FGAF GUERRERO 810Y
TRIPLE T SHADOW 20E
GRINALTA`S UNIQUE DPFF81Z
RICH'S WARPED 31W

CE	BW	WW	YW	MCE	Milk	DOC	YG	Marb	REA	API
9.5	-0.2	66.9	94.8	-1.3	29.2	10.3	-0.30	0.01	0.73	103.6

Polled/S, Black Blaze, 1/2 SM 1/2 AN. We are very pleased with the Roster progeny and calved a few daughters this year. Half Fleckvieh from a low birth weight cow family. Dam's production 1 @ 103, Grand dam's production 5 @ 99.

BULL

VE REAR AXLE BAUER 59M

DOB. 4/6/24 • ASA#. 4491335 • Tattoo. 59M

Act BW. 87 • WR. 109 • YR. 105 • SC. 37.0 • PAP. 41

O C C REAR END 751R
OCC REAR AXLE 270J
OCC PAISLEY 160P

BIG HILLS VALUE 262E
VE MAPLE BALLAD 95J
MS VE 585 E709

O C C HOMER 650H
FCC REVOLUTION ROSE 995N
O C C JET STREAM 825J
MISS ARNOLD E5568
STARWEST TOTAL VALUE
MCM MS SA BRITT 15B
BRINK C585
A222

CE	BW	WW	YW	MCE	Milk	DOC	YG	Marb	REA	API
5.3	3.6	76.3	104.3	1.0	25.1	11.7	-0.36	0.09	0.78	108.1

Polled, Solid Black, 5/8 SM 3/8 AN. Dam is a Fleckvieh cow that is really good. A quiet performer that is hard to fault. Dam's production 1 @ 109, Grand dam's production 3 @ 99. NEOGEN GGP

BULL

5

VE HOLT ROBUST 11M

DOB. 3/11/24 • ASA#. 4491364 • Tattoo. 11M

Act BW. 70 • WR. 100 • YR. 96 • SC. 37.0 • PAP. 37

BLACK GOLD ELEVATION 20E
WOLFE HOLT FF 306H
SWANTEWITT BOLLY 306B

CONNEALY THUNDER
VE THUNDER ROSE 610D
VE WZ ROSE 170Y

SOUTHSEVEN MR ADONIS 96Z
BLACK GOLD MS FLORA 84B
CHERRY CREEK CARLSBERG 2S
SWANTEWITT HOLLY 80W
BALDRIDGE KABOOM K243 KCF
PARKA OF CONANGA 241
O C C WIZARD 601W
PEV MAYOR ROSE 24P2

CE	BW	WW	YW	MCE	Milk	DOC	YG	Marb	REA	API
13.0	-0.8	53.9	84.3	7.4	34.3	14.3	-0.19	0.17	0.49	118.1

Polled, Solid Black, 1/2 SM 1/2 AN. These F1 (Fleckvieh x Angus) bulls can sire great feeder calves and females. They should calve unassisted and get up and go. Lots of heterosis for the taking. Dam's production 4 @ 96, Grand dam's production 5 @ 98. NEOGEN GGP.



LOT 5

BULL

6

VE EXBLZ HELLES 34M

DOB. 3/20/24 • ASA#. 4491392 • Tattoo. 34M

Act BW. 89 • WR. 101 • YR. 96 • SC. 35.5 • PAP. 32

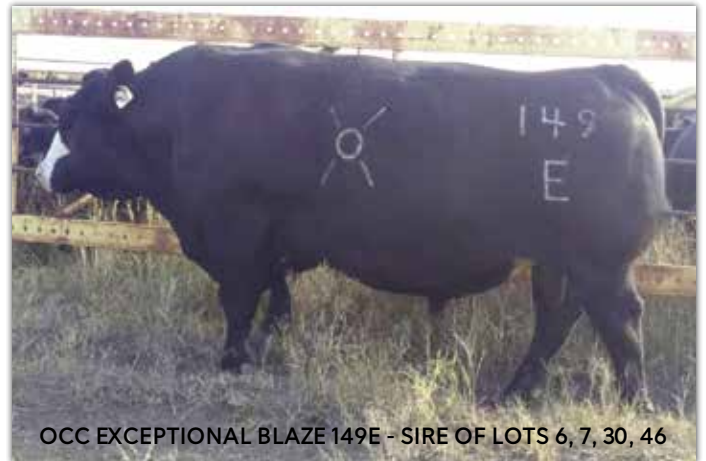
O C C ANVIL 809A
OCC EXCEPTIONAL BLAZE 149E
OCC SCARLETT 111S

SANDEENS SOS
VE SOS HELENA 538C
JBD JF HELENA 19U

O C C MISSING LINK 830M
FCC BLACKCAP LADY 3810
O C C JET STREAM 825J
OCC MISS ARNOLD 134M
DJ SALUTE G509
K022_
OCC JETFECK 133N
HD DUNN HELEN N3409

CE	BW	WW	YW	MCE	Milk	DOC	YG	Marb	REA	API
8.0	2.6	55.4	67.8	1.1	26.5	12.7	-0.08	0.28	0.23	112.0

Polled, Solid Black, 3/8 SM 5/8 AN. Bell curve centered skamp from a solid line of cows. Avoid the extremes and stay balanced with bulls of this caliber. Dam's production 7 @ 107, Grand dam's production 10 @ 110. NEOGEN GGP.



OCC EXCEPTIONAL BLAZE 149E - SIRE OF LOTS 6, 7, 30, 46

BULL

7

VE EXBLZ ENRICH 26M

DOB. 3/17/24 • ASA#. 4491391 • Tattoo. 26M

Act BW. 79 • WR. 97 • YR. 94 • SC. 36.0 • PAP. 34

O C C ANVIL 809A
OCC EXCEPTIONAL BLAZE 149E
OCC SCARLETT 111S

GOLDEN DAWN BEDROCK
VE ROCK ENVIUOUS 768E
VE 3X ENVIUOUS 277Z

O C C MISSING LINK 830M
FCC BLACKCAP LADY 3810
O C C JET STREAM 825J
OCC MISS ARNOLD 134M
HEMR SAMURAI 7S
GOLDEN DAWN BEULAH
JBD 3XM 39T
JBD BL ENVIUOUS 814U

CE	BW	WW	YW	MCE	Milk	DOC	YG	Marb	REA	API
11.8	0.4	45.9	57.2	3.8	30.4	11.7	-0.18	0.24	0.34	121.7

Polled, Solid Black, 1/2 SM 1/2 AN. A lower birth weight cow line that consistently cranks out the good ones. His grandmother is cruising at 13 years old with 4 daughters in the herd. Dam's production 6 @ 104, Grand dam's production 9 @ 110. NEOGEN GGP.



LOT 7

BULL

8

VE F3 ENNIS 1M

DOB. 2/20/24 • ASA#. 4491411 • Tattoo. 1M

Act BW. 77 • WR. 93 • YR. 94 • SC. 36.0 • PAP. 37

PAPA FORTE 1921
VE MEYER FORTE 330F
MEYER ROSETTA 213Z

SPRINGCREEK ADVANCE 118H
VE ADVANCE ENVIUOUS 299K
VE ROCK ENVIUOUS 768E

PAPA OPTIMA 9818
PAPA ENVIUOUS BLACKBIRD 8832
SOO LINE MOTIVE 9016
FCC ROSETTA 824U
IPU ADVANCE 144Z
SPRINGCREEK ABBEY 99E
GOLDEN DAWN BEDROCK
VE 3X ENVIUOUS 277Z

CE	BW	WW	YW	MCE	Milk	DOC	YG	Marb	REA	API
13.5	-1.1	52.0	74.9	2.8	30.1	11.5	-0.21	0.28	0.58	120.1

Polled, Solid Black, 1/2 SM 1/2 AN. Stems from the same reliable cow family as the Lot 7 bull. Saavy ranchers will understand the process that we are striving for. Highly recommended! Dam's production 1 @ 93, Grand dam's production 6 @ 104. NEOGEN GGP.



LOT 8



BULL **VE HOLT PABLO 8M**

11 DOB. 3/7/24 • ASA#. 4491371 • Tattoo. 8M
Act BW. 82 • WR. 96 • YR. 95 • SC. 37.0 • PAP. 40

WOLFE HOLT FF 306H BLACK GOLD ELEVATION 20E
SWANTEWITT BOLLY 306B

VE JET PAULINE 456B O C C JET STREAM 825J
PEV ND 878 PAULINE 2M10

SOUTHSEVEN MR ADONIS 96Z
BLACK GOLD MS FLORA 84B
CHERRY CREEK CARLSBERG 2S
SWANTEWITT HOLLY 80W

O C C EMBLAZON 854E
O C C JUANADA 968G
BON VIEW NEW DESIGN 878
P E V MAYOR PAULINE J266

CE	BW	WW	YW	MCE	Milk	DOC	YG	Marb	REA	API
11.2	1.0	58.2	83.7	5.7	30.6	13.2	-0.17	0.15	0.44	114.3

Polled/S, Black Blaze, 1/2 SM 1/2 AN. Holt sires moderate birth weights much like his sire Elevation. Dam is a powerful cow with tremendous body shape. Dam's production 7 @ 95, Grand dam's production 9 @ 106. NEOGEN GGP.



BULL **VE ECLIPSE BUTCH 2M**

9 DOB. 2/21/24 • ASA#. 4491333 • Tattoo. 2M
Act BW. 76 • WR. 99 • YR. 95 • SC. 38.0 • PAP. 36

VE CUT R ECLIPSE 32J VE EDP CUT RIGHT 362E
VE SAG ELIPSE 431B

VE ADVANCE BURGESS 5K SPRINGCREEK ADVANCE 118H
VE ROCK BURGESS 760E

MFI CENTER CUT 2291
GOLDEN DAWN MS STROLLER
KCC SAGINAW 6W
JBD ELLY 231S
IPU ADVANCE 144Z
SPRINGCREEK ABBEY 99E
GOLDEN DAWN BEDROCK
VE WZ BURGESS 161Y

CE	BW	WW	YW	MCE	Milk	DOC	YG	Marb	REA	API
11.0	0.8	65.4	89.9	4.6	19.5	10.7	-0.25	0.06	0.64	110.0

Polled/S, Solid Black, 5/8 SM 3/8 AN. We have used Eclipse on heifers with great success and really love everything about the bull. His first daughters are calving now and his sons are stout made. Dam's production 1 @ 99, Grand dam's production 6 @ 100. NEOGEN GGP.

BULL **VE ADVANCE PROUD 51M**

10 DOB. 3/31/24 • ASA#. 4491293 • Tattoo. 51M
Act BW. 79 • WR. 102 • YR. 99 • SC. 37.0 • PAP. 40

SPRINGCREEK ADVANCE 118H IPU ADVANCE 144Z
SPRINGCREEK ABBEY 99E

VE JET D PRIDE 701E O C C JET STREAM 825J
VE ABE PRIDE 596C

LFEBISS BLACKADVANCE426U
IPU MS. BLACKBIRD 223T
LFE MCDAVID 413C
SPRINGCREEK ABBEY 10Z
O C C EMBLAZON 854E
O C C JUANADA 968G
JCS ABRAM Z121
PEV ND 878 PRIDE 67T1

CE	BW	WW	YW	MCE	Milk	DOC	YG	Marb	REA	API
8.8	1.3	67.9	98.7	0.9	21.6	11.6	-0.21	0.08	0.49	114.0

Polled, Solid Black, 5/8 SM 3/8 AN. Another bell curved midline bull that does it all with ease. You may notice the absence of popular AI sires here. Pure outcross genetics! Jack Nielsen selected his full brother last year. Dam's production 4 @ 100, Grand dam's production 5 @ 99. NEOGEN GGP.

BULL **VE GULF ENRIQUE 10M**

12 DOB. 3/11/24 • ASA#. 4491345 • Tattoo. 10M
Act BW. 70 • WR. 100 • YR. 101 • SC. 36.0 • PAP. 38

OCC GULF STREAM 183Z O C C JET STREAM 939W
OCC TONI 134T

VE CUT R DIXIE ERICA 56H VE EDP CUT RIGHT 362E
VE TG DIXIE ERICA 500C

O C C JET STREAM 825J
O C C JUANADA 861T
O C C MITCHELL 831M
MISS ARNOLD F9708
MFI CENTER CUT 2291
GOLDEN DAWN MS STROLLER
MCM TOP GRADE 018X
VE TLP DIXIE ERICA 177Y

CE	BW	WW	YW	MCE	Milk	DOC	YG	Marb	REA	API
14.9	-1.9	55.8	90.3	5.7	22.1	7.7	-0.08	0.24	0.26	126.0

Polled/S, Black Star, 3/8 SM 5/8 AN. One of the top heifer bull prospects with flat joints and neat dew claws. We have managed 6 generations behind this bull. No holes! Dam's production 3 @ 97, Grand dam's production 7 @ 102. NEOGEN GGP.

BULL **VE HALFBACK RIO VERDE 24M**

13 DOB. 3/16/24 • ASA#. 4491402 • Tattoo. 24M
Act BW. 86 • WR. 96 • YR. 100 • SC. 37.0 • PAP. 37

S/M HALFBACK H081 S/M DIESEL D141
S/M ROSE ANN F081

VE PICASSO RIATA 132G 3C PICASSO F955 BZ
VE 6 ANGUS

IPU RADIUM 20A
S/M FRANCESCA B141
PHS BANK ROLL 345B
S/M RACHEL D061
MEYER RANCH 734
HPS MISS COAL TRAIN
ANGUS
ANGUS

CE	BW	WW	YW	MCE	Milk	DOC	YG	Marb	REA	API
10.5	1.2	62.4	94.9	6.2	29.3	11.8	-0.35	0.16	0.58	125.3

Polled, Black Blaze, 3/4 SM 1/4 AN. We search North America hard for this kind of bull and do not find many herd bull candidates of this caliber. Dam's production 4 @ 97, Grand dam's production 3 @ 99. NEOGEN GGP.

BULL

14

VE REAR AXLE BARRON 53M

DOB. 4/1/24 • ASA#. 4491318 • Tattoo. 53M

Act BW. 88 • WR. 103 • YR. 106 • SC. 38.0 • PAP. 41

OCC REAR END 751R
OCC REAR AXLE 270J
 OCC PAISLEY 160P

RED CROWFOOT OLE`S OSCAR
VE OSCAR BALLAD 18J
 VE IMAX BALLAD 8G

OCC HOMER 650H
 FCC REVOLUTION ROSE 995N
 OCC JET STREAM 825J
 MISS ARNOLD E5568
 MLK CRK CUB 722
 CROWFOOT OMEGA 9179J
 ANCHOR D IMAX 250Y
 MS VE 585 E709

CE	BW	WW	YW	MCE	Milk	DOC	YG	Marb	REA	API
8.8	1.6	66.6	99.9	3.9	27.1	13.1	-0.23	0.32	0.54	121.1

Polled, Solid Black, 1/2 SM 1/4 AN 1/4 RA. The three cows behind this bull are superb. His dam is a red brockle that is poster worthy. A mellow stud that could go anywhere without reservation. Dam's production 2 @ 106, Grand dam's production 3 @ 99. NEOGEN GGP.



LOT 14

BULL

15

VE HALFBACK QUINN 65M

DOB. 4/14/24 • ASA#. 4491406 • Tattoo. 65M

Act BW. 88 • WR. 108 • YR. 110 • SC. 36.0 • PAP. 38

S/M DIESEL D141
S/M HALFBACK H081
 S/M ROSE ANN F081

CONNELLY THUNDER
VE TR QUEENIE 427B
 PEV TRADITION QUEENIE 80R1

IPU RADIUM 20A
 S/M FRANCESCA B141
 PHS BANK ROLL 345B
 S/M RACHEL D061
 BALDRIDGE KABOOM K243 KCF
 PARKA OF CONANGA 241
 SITZ TRADITION RLS 8702
 P EV ON LINE QUEENIE K133

CE	BW	WW	YW	MCE	Milk	DOC	YG	Marb	REA	API
11.9	1.4	76.5	121.1	8.4	26.5	14.2	-0.21	0.26	0.49	125.7

Polled, Solid Black, 1/2 SM 1/2 AN. Halfback is a well proven heifer bull but when used on some power cows here is the typical result. A rare combination. Dam's production 10 @ 102, Grand dam's production 8 @ 96. NEOGEN GGP.



LOT 15

BULL

16

VE ADVANCE EISEN 41M

DOB. 3/23/24 • ASA#. 4491282 • Tattoo. 41M

Act BW. 94 • WR. 110 • YR. 99 • SC. 35.0 • PAP. 34

IPU ADVANCE 144Z
SPRINGCREEK ADVANCE 118H
 SPRINGCREEK ABBEY 99E

GOLDEN DAWN BEDROCK
VE ROCK EISA 783E
 ER EISA EVERGREEN P523

LFEISS BLACKADVANCE426U
 IPU MS. BLACKBIRD 223T
 LFE MCDAVID 413C
 SPRINGCREEK ABBEY 10Z
 HEMR SAMURAI 7S
 GOLDEN DAWN BEULAH
 SUMMITCREST HIGH PRIME 0H29
 ER EISA EVERGREEN K245

CE	BW	WW	YW	MCE	Milk	DOC	YG	Marb	REA	API
4.9	4.1	73.4	100.8	1.7	21.2	12.3	-0.35	0.13	0.76	113.6

Polled, Black Baldy, 3/4 SM 1/4 AN. A baldy bull will sire nearly 100% blaze faces when used on Red and Black Angus cows. It's the money stripe, breed recognition, and breed complementarity manifesting itself. Dam's production 3 @ 103, Grand dam's production 9 @ 100. NEOGEN GGP.



LOT 16

BULL

17

VE HOLT HELTIC 52M

DOB. 4/1/24 • ASA#. 4491305 • Tattoo. 52M

Act BW. 88 • WR. 108 • YR. 106 • SC. 35.0 • PAP. 35

BLACK GOLD ELEVATION 20E
WOLFE HOLT FF 306H
 SWANTEWITT BOLLY 306B

MRL DISCOVERY 21A
VE DISCOVER HELENA 13G
 VE ZAM HELENA 607D

SOUTHSEVEN MR ADONIS 96Z
 BLACK GOLD MS FLORA 84B
 CHERRY CREEK CARLSBERG 2S
 SWANTEWITT HOLLY 80W
 MRL INTEGRITY 76Y
 TSN MS EDITION 55W
 O C C ZAMIR 412Z
 VE TU HELENA 425B

CE	BW	WW	YW	MCE	Milk	DOC	YG	Marb	REA	API
10.6	2.6	73.8	110.3	6.8	26.2	12.8	-0.37	0.03	0.68	118.0

Polled/S, Black Blaze, 3/4 SM 1/4 AN. These Holt sons will shed early and will be good breeders. A tremendously thick ended bull that will be easy to find. Dam's production 4 @ 101. Grand dam's production 3 @ 95.



LOT 17



BULL

18

VE HOLT REDFORD 50M

DOB. 3/31/24 • ASA#. 4491347 • Tattoo. 50M

Act BW. 91 • WR. 102 • YR. 103 • SC. 39.0 • PAP. 40

BLACK GOLD ELEVATION 20E
WOLFE HOLT FF 306H
 SWANTEWITT BOLLY 306B

O C C ZAMIR 412Z
VE ZAMIR REIA 790E
 VE WZ REIA 176Y

SOUTHSEVEN MR ADONIS 96Z
 BLACK GOLD MS FLORA 84B
 CHERRY CREEK CARLSBERG 2S
 SWANTEWITT HOLLY 80W

O C C JET STREAM 825J
 O C C JUANADA 826R
 O C C WIZARD 601W
 P E V EXT REIA J282

CE	BW	WW	YW	MCE	Milk	DOC	YG	Marb	REA	API
10.9	1.5	61.4	90.8	5.4	29.8	13.2	-0.18	0.13	0.43	112.4

Polled, Black Blaze, 1/2 SM 1/2 AN. A powerhouse that is made right and growthy. We weigh our calves within 24 hours after birth with an electronic scale. If we pull them they are steers. Dam's production 2 @ 100. Grand dam's production 8 @ 100. NEOGEN GGP.



LOT 19

BULL

19

VE JUSTUS EAGLE 7M

DOB. 3/5/24 • ASA#. 4491373 • Tattoo. 7M

Act BW. 92 • WR. 100 - ET • YR. 100 - ET • SC. 37.0 • PAP. 36

SHAWACRES JAHARI 50L
DOUBLE BAR D JUSTUS 269X
 MFI MISS FEODORA 6189

KCC SAGINAW 6W
VE SAG ELLY 430B
 JBD ELLY 231S

BHR DOORN G629E
 MISS SHAWACRES HEIDI 1H
 MFI WHISTLER 47L
 MFI MISS FEODORA 1L

DCC NEW LOOK 101
 KCC 26J
 3C PICASSO F955 BZ
 VE 9288 ANGUS

CE	BW	WW	YW	MCE	Milk	DOC	YG	Marb	REA	API
3.4	5.3	71.8	107.5	1.4	25.8	10.1	-0.43	0.10	0.74	106.5

Polled, Black Blaze, 3/4 SM 1/4 AN, Embryo Transfer. WOWZA! Grunt, style, thick hipped rascal built on a stout leg. Highly recommended! Dam's production 7 @ 104, Grand dam's production 9 @ 102. NEOGEN GGP.



IPU ROMANO 90X - SIRE OF LOT 20

BULL

20

VE ROMANO ERNEY 35M

DOB. 3/20/24 • ASA#. 4491348 • Tattoo. 35M

Act BW. 93 • WR. 97 • YR. 104 • SC. 35.0 • PAP. 37

CHAMPS ROMANO
IPU ROMANO 90X
 IPU MS LEGEND 42P

VE NE RONNY 862C
VE RONNY DIXIE ERICA 865F
 HD DUNN DIXIE ERICA 631Z

SMITHBILT MOLSON 21M
 CHAMPS PRICILLA
 ANCHOR T LEGEND 7H
 IPU 23A BONNIE 53M

DUFF NEW EDITION 6108
 FCC ROSETTA 984N
 BOYD NEW DAY 8005
 HD DUNN DIXIE ERICA 1534

CE	BW	WW	YW	MCE	Milk	DOC	YG	Marb	REA	API
9.2	3.3	66.4	105.2	4.2	25.1	7.1	-0.16	0.14	0.45	112.3

Polled/S, Black Blaze, 1/2 SM 1/2 AN. Dam is a smaller hard working, very fertile Angus cow. Our top cows over the years are bred just like this. Dam's production 3 @ 98, Grand dam's production 11 @ 106.

YEARLING BULLS



ANGUS

Our Angus are very unique, linebred, maternally efficient, and sound cattle. We are strict in our genetic selection to avoid extremes and potential defective lethal genes. We want moderate, robust, well muscled bulls to exhibit breed character, libido, and produce those easy to manage black hided cow herds. We have steered clear of genetic defects because of our long standing awareness of dirty pedigrees. We will not sell carriers of a genetic defect or commercial bulls of unknown parentage. We list the EPDs that we have found to be the most important in real world ranching.

BULL

21

VE AUTO POMADE 16L

DOB. 3/23/23 • ASA#. 4311268 • Tattoo. 16L

Act BW. 80 • WR. 89 • YR. 91 • SC. 40.0 • PAP. 40

COLE CREEK 1322 AUTO 717
COLE CREEK 717 AUTO X22
 COLE CREEK JUANADAMERE 503

CO KILKELLY DEFENDER 52A
VE DEFEND PROMINENT 679D
 P E V EXT PRIDE 67L4

COLE CREEK 1100 AUTOMATIC
 COLE CREEK JUANADA G 513
 COLE CREEK BLACK SEAL 230
 COLE CREEK JUANADAMERE 39R

KILKELLY DEFENDER
 WOODSTONE L ELIZABETH 3570
 N BAR EMULATION EXT
 P L S TONTO PRIDE B986

CE	BW	WW	YW	MCE	Milk	DOC	YG	Marb	REA	API
14.2	-0.9	51.7	77.0	9.8	22.2	-0.7	0.16	0.36	0.00	88.9

Purebred Angus. We used this bull to breed our replacement heifers after AI. This will be the only 2 year old in the sale. Dave Edwards found his full brother last year. Dam's production 5 @ 103, Grand dam's production 15 @ 98.

BULL

23

VE BEST YET DIXYN 27M

DOB. 3/17/24 • ASA#. 4491384 • Tattoo. 27M

Act BW. 78 • WR. 89 • YR. 97 • SC. 35.0 • PAP. 37

O C C WORK OF ART 766W
O C C BEST YET 766B
 O C C DIXIE ERICA 817Y

O C C ZAMIR 412Z
VE ZAMIR DIXIE ERICA 883F
 HD DUNN DIXIE ERICA 7294

O C C GREAT PLAINS 943G
 O C C DIXIE ERICA 662J
 O C C EUREKA 865E
 O C C DIXIE ERICA 612H

O C C JET STREAM 825J
 O C C JUANADA 826R
 O C C MAGNITUDE 805M
 HD DUNN DIXIE ERICA 4172

CE	BW	WW	YW	MCE	Milk	DOC	YG	Marb	REA	API
9.5	-1.0	54.8	92.7	-2.5	25.0	8.3	0.26	0.34	-0.08	107.1

Purebred Angus. We have fewer Angus bulls this year based on demand and the fact that 5000 some odd Angus are sold fairly close by. But we still maintain these are better designed for our ranch conditions and environment. High end Angus pedigree! Dual registered with Angus and Simmental Associations. Dam's production 5 @ 99, Grand dam's production 14 @ 105. AAA# 21206943

BULL

24

VE ROSTER ANAKIN 3M

DOB. 2/22/24 • ASA#. 4491323 • Tattoo. 3M

Act BW. 77 • WR. 99 • YR. 97 • SC. 36.0 • PAP. 39

O C C JUNEAU 807J
VE JUNEAU ROSTER 1J
 MEYER ROSETTA 213Z

O C C BEST YET 766B
VE BEST YET ANNIE 262K
 VE PB 202 ANNIE 604D

O C C EMBLAZON 854E
 O C C DIXIE ERICA 903E
 SOO LINE MOTIVE 9016
 FCC ROSETTA 824U

O C C WORK OF ART 766W
 O C C DIXIE ERICA 817Y
 H A R PINEBANK 443 202
 COLORADO ANNIE 3

CE	BW	WW	YW	MCE	Milk	DOC	YG	Marb	REA	API
9.5	-1.7	64.3	105.0	-3.0	23.1	9.5	0.09	0.25	0.28	99.3

Purebred Angus. A high quality Angus bull that should shine on heifers. Certainly a bull we would consider using in our own herd. Dual registered with Angus and Simmental Associations. Dam's production 1 @ 99, Grand dam's production 4 @ 97. AAA# 21209360

BULL

22

VE BEST YET PALOUSE 28M

DOB. 3/17/24 • ASA#. 4491378 • Tattoo. 28M

Act BW. 78 • WR. 91 • YR. 86 • SC. 33.0 • PAP. 40

O C C WORK OF ART 766W
O C C BEST YET 766B
 O C C DIXIE ERICA 817Y

S C C 328F
VE UNLIMIT PAULINE 42H
 VE E27C PAULINE 616D

O C C GREAT PLAINS 943G
 O C C DIXIE ERICA 662J
 O C C EUREKA 865E
 O C C DIXIE ERICA 612H

O C C UNLIMITED 940U
 S C C DIXIE ERICA 983B
 DDA EMBLAZON 27C
 PEV ND 878 PAULINE 2T4

CE	BW	WW	YW	MCE	Milk	DOC	YG	Marb	REA	API
8.9	-0.9	51.2	81.4	-1.0	25.0	6.3	0.25	0.36	-0.06	103.3

Purebred Angus. Calving ease deluxe with a unique outcross pedigree to most mainstream Angus genetics. 3rd Dam weaned 9 @ 100 and was a Pathfinder. Dual registered with Angus and Simmental Associations. Dam's production 2 @ 99, Grand dam's production 2 @ 99. AAA# 21206942





LOT 25

BULL

26

VE EXBLZ WILDER 18M

DOB. 3/14/24 • ASA#. 4491325 • Tattoo. 18M

Act BW. 85 • WR. 97 • YR. 90 • SC. 34.0 • PAP. 38

O C C ANVIL 809A
OCC EXCEPTIONAL BLAZE 149E
OCC SCARLETT 111S

CONNEALY THUNDER
VE TH WILMA 221Z
MISS YARDLEY R127

O C C MISSING LINK 830M
FCC BLACKCAP LADY 3810
O C C JET STREAM 825J
OCC MISS ARNOLD 134M

BALDRIDGE KABOOM K243 KCF
PARKA OF CONANGA 241
3C PICASSO F955 BZ
MISS YARDLEY L21

CE	BW	WW	YW	MCE	Milk	DOC	YG	Marb	REA	API
10.4	0.2	47.3	63.1	3.6	23.1	16.2	-0.07	0.32	0.24	118.5

Polled/S, Black Blaze, 3/8 SM 5/8 AN. A quiet lad that should calve easily. His dam is showing some age but has been sound and productive. Dam's production 11 @ 98, Grand dam's production 8 @ 103. NEOGEN GGP.



DAM

BULL

25

VE EUREKA ERVING 23M

DOB. 3/16/24 • ASA#. 4491346 • Tattoo. 23M

Act BW. 84 • WR. 103 • YR. 99 • SC. 37.0 • PAP. 38

O C C BACKSTOP 888B
O C C EUREKA 865E
BLACKBIRD OF R R 1204

DREAM OF HAGUE 618
VE 618 DIXIE ERICA 116G
HD DUNN DIXIE ERICA 6312

D H D TRAVELER 6807
REVOLUTION ROSE OF R R 9239
PBC 707 1M F0203
BLACKBIRD OF R R 7023
RESURGAM BLU-PRINT T368
DDA STELLA 443
BOYD NEW DAY 8005
HD DUNN DIXIE ERICA 1534

CE	BW	WW	YW	MCE	Milk	DOC	YG	Marb	REA	API
13.2	-0.1	58.4	86.6	3.5	21.3	12.4	0.10	0.40	0.14	106.0

Purebred Angus. A breeder quality bull that will demand attention. Next three dams not on paper (Dixie Erica 1534 by N Bar Explosion V1495, then 6180 (Shoshone Intent), then 1019 (FO203). A gentleman with manners. Dual registered with Angus and Simmental Associations. Dam's production 4 @ 102, Grand dam's production 11 @ 106. Retaining 1/3 semen interest for in herd use. NEOGEN GGP. AAA# 21206917

BULL

27

VE HOLT CALIBER 84M

DOB. 3/29/24 • ASA#. 4492919 • Tattoo. 84M

Act BW. 89 • WR. 100 • YR. 100 • SC. 36.0 • PAP. 40

BLACK GOLD ELEVATION 20E
WOLFE HOLT FF 306H
SWANTEWITT BOLLY 306B

ANGUS
VE 24R ANGUS
ANGUS

SOUTHSEVEN MR ADONIS 96Z
BLACK GOLD MS FLORA 84B
CHERRY CREEK CARLSBERG 2S
SWANTEWITT HOLLY 80W

ANGUS
ANGUS
ANGUS
ANGUS

CE	BW	WW	YW	MCE	Milk	DOC	YG	Marb	REA	API
10.0	1.7	65.7	94.5	6.1	29.7	11.9	-0.32	0.14	0.65	111.9

Polled, Solid Black, 1/2 Sm 1/2 AN. Quite often using a fullblood Fleckvieh on Angus cows you will get solid black calves. We strive to keep pigment on eyes, udders, and teats.

BULL

28

VE ECLIPSE ERIC 5M

DOB. 2/24/24 • ASA#. 4491291 • Tattoo. 5M

Act BW. 79 • WR. 86 • YR. 92 • SC. 34.0 • PAP. 35

VE-EDP CUT RIGHT 362E
VE CUT R ECLIPSE 32J
VE SAG ELIPSE 431B

DEEF CREED C503
VE CREED DIXIE ERICA 259K
VE RONNY DIXIE ERICA 865F

MFI CENTER CUT 2291
GOLDEN DAWN MS STROLLER
KCC SAGINAW 6W
JBD ELLY 231S
SIEGFRIED
HACKS BOLD FENELLA
VE NE RONNY 862C
HD DUNN DIXIE ERICA 6312

CE	BW	WW	YW	MCE	Milk	DOC	YG	Marb	REA	API
11.2	0.8	48.3	74.3	6.4	23.0	9.5	-0.17	0.09	0.44	96.2

Polled, Black Brockle, 1/2 SM 1/2 AN. We could take the easy road and just use the bull of the month based on popularity and hype. But we choose the genetics that have been tested here or in other quality breeder herds. Dam's production 1 @ 86, Grand dam's production 3 @ 98. NEOGEN GGP.

BULL

29

VE ADVANCE JETT 62M

DOB. 4/11/24 • ASA#. 4491292 • Tattoo. 62M

Act BW. 79 • WR. 103 • YR. 100 • SC. 35.0 • PAP. 34

IPU ADVANCE 144Z
SPRINGCREEK ADVANCE 118H
SPRINGCREEK ABBEY 99E

GOLDEN DAWN DECKER
VE DECK JETTON 838F
VE 3X JETTON 287Z

LFEBISS BLACKADVANCE426U
IPU MS. BLACKBIRD 223T
LFE MCDAVID 413C
SPRINGCREEK ABBEY 10Z
MFI CENTER CUT 2291
GOLDEN DAWN MARTHA
JBD 3XM 39T
VE PIC PIAZZZ 245R

CE	BW	WW	YW	MCE	Milk	DOC	YG	Marb	REA	API
10.1	0.9	69.1	100.9	3.8	20.7	14.2	-0.29	0.08	0.52	119.4

Polled, Black Star, 3/4 SM 1/4 AN. A maternal brother is working at Jauer's in Iowa. We measure, clip, and get our hands on every bull in our sale. So, yes we know them, and this bull winds my clock. Dam's production 4 @ 97, Grand dam's production 11 @ 101. NEOGEN GGP.

BULL

30

VE EXBLZ ENRICH 38M

DOB. 3/22/24 • ASA#. 4491312 • Tattoo. 38M

Act BW. 76 • WR. 99 • YR. 97 • SC. 36.5 • PAP. 39

O C C ANVIL 809A
OCC EXCEPTIONAL BLAZE 149E
 OCC SCARLETT 111S

GOLDEN DAWN DECKER
VE DECK ENVIOUS 885F
 VE 3X ENVIOUS 277Z

O C C MISSING LINK 830M
 FCC BLACKCAP LADY 3810
 O C C JET STREAM 825J
 OCC MISS ARNOLD 134M
 MFI CENTER CUT 2291
 GOLDEN DAWN MARTHA
 JBD 3XM 39T
 JBD BL ENVIOUS 814U

CE	BW	WW	YW	MCE	Milk	DOC	YG	Marb	REA	API
13.1	-0.8	50.8	71.6	4.3	24.8	14.1	-0.12	0.29	0.25	126.2

Polled, Black Blaze, 1/2 SM 1/2 AN. This Envious cow family has been stellar in our herd. They have sound feet, great udders, and love to raise calves. Dam's production 5 @ 101, Grand dam's production 9 @ 110. NEOGEN GGP.

BULL

31

VE BONE STACK 66M

DOB. 4/17/24 • ASA#. 4491301 • Tattoo. 66M

Act BW. 94 • WR. 113 • YR. 107 • SC. 34.0 • PAP. 41

S C C 328F
VE UNLIMIT BONE 38J
 VE JUSTUS BARBARA 32G

JCS ABRAM Z121
VE ABE STACEY 286K
 MS VE RADIUM STACEY 847F

O C C UNLIMITED 940U
 S C C DIXIE ERICA 983B
 DOUBLE BAR D JUSTUS 269X
 VE BLACK C BARBARA 633D
 CROSSROAD TUXEDO 222T
 DOUBLE BAR D JENA 121X
 CROSSROAD RADIUM 789U
 DDD STACEY MAC

CE	BW	WW	YW	MCE	Milk	DOC	YG	Marb	REA	API
6.1	4.3	77.3	105.6	1.3	28.0	11.0	-0.29	0.10	0.52	106.3

Polled, Black Blaze, 5/8 SM 3/8 AN. This is the 2nd Bone bull calf to date. The first Bone daughters calved 1st and 2nd this year and show tremendous maternal instinct. Be sure to look at the herd sires on sale day. Dam's production 1 @ 113, Grand dam's production 3 @ 109. NEOGEN GGP.



YEARLING BULLS



Join CCI.live Online for the Sale!

The best, the fastest and most comprehensive
online marketing & bidding tool!

BUYERS NOTE, you do not need an account or to login to watch the sale but you must have a validated account to bid.

Viewed Around the World!

**SALE CATALOG, VIDEOS,
and LIVE BROADCAST...**

all at your fingertips from the sale page
at www.CCI.live! Watch sales live weekly!





www.CCI.live
 (405) 400-9505 Text or Call - schedule@cci.live
 Find us on the App Store and Google Play
 Over 35 years in livestock marketing!

FLECKVIEH

Our nucleus herd of Fleckvieh are being developed in our same rugged conditions of the west that the rest of the herd experience. We are striving for moderate framed, easy fleshing, brilliant uddered females to produce some of the few fullbloods available in Idaho and surrounding states. We are also developing many polled individuals to appeal to more customers. We produce non-diluters so there is no chance of getting grey calves. In our experience the Fleckvieh cattle have the lowest PAP scores and thrive in elevated regions.

BULL

32

VE ABE STACKER 15M

DOB. 3/14/24 • ASA#. 4491410 • Tattoo. 15M

Act BW. 74 • WR. 100 • YR. 100 • SC. 35.0 • PAP. 32

CROSSROAD TUXEDO 222T
JCS ABRAM Z121
DOUBLE BAR D JENA 121X

CROSSROAD RADIUM 789U
MS VE RADIUM STACEY 847F
DDD STACEY MAC

DOUBLE BAR D EVEREST 4R
MISS ARNOLD K5934
DOUBLE BAR D EXODUS 104U
GIBBONS JELLO

MF MR. EVAN 14P
CROSSROADS PANDITA 308P
WESTDRUMS ANDREW
CHESTATEE TABASCOW

CE	BW	WW	YW	MCE	Milk	DOC	YG	Marb	REA	API
6.5	4.9	69.5	89.1	0.9	34.5	12.3	-0.60	-0.14	0.89	94.7

Horned, Double Goggles, 100% Fullblood Fleckvieh. A twin to Lot 33 raised by another cow. We know the value in these Fleckvieh bulls and want to share them. Dark red feet and lots of pigment. Diluter Free. Dam's production 3 @ 109.



LOT 34



LOT 35

BULL

33

VE ABE STACKS 14M

DOB. 3/14/24 • ASA#. 4491298 • Tattoo. 14M

Act BW. 77 • WR. 100 • YR. 100 • SC. 37.0 • PAP. 36

CROSSROAD TUXEDO 222T
JCS ABRAM Z121
DOUBLE BAR D JENA 121X

CROSSROAD RADIUM 789U
MS VE RADIUM STACEY 847F
DDD STACEY MAC

DOUBLE BAR D EVEREST 4R
MISS ARNOLD K5934
DOUBLE BAR D EXODUS 104U
GIBBONS JELLO

MF MR. EVAN 14P
CROSSROADS PANDITA 308P
WESTDRUMS ANDREW
CHESTATEE TABASCOW

CE	BW	WW	YW	MCE	Milk	DOC	YG	Marb	REA	API
6.5	4.9	69.5	89.1	0.9	34.5	12.3	-0.60	-0.14	0.89	94.7

Horned, Double Goggles, 100% Fullblood Fleckvieh. This twin stayed on the cow and it gave him an advantage. Very dark pigment, red footed, and loaded with moderate birth weights in his lineage. Diluter free. Dam's production 3 @ 109.

BULL

34

VE HALFBACK SAMUEL 54M

DOB. 4/2/24 • ASA#. 4491351 • Tattoo. 54M

Act BW. 70 • WR. 95 • YR. 97 • SC. 33.0 • PAP. 34

S/M DIESEL D141
S/M HALFBACK H081
S/M ROSE ANN F081

HEMR SAMURAI 7S
GOLDEN DAWN SAMMIE
JE SACHSE 13P

IPU RADIUM 20A
S/M FRANCESCA B141
PHS BANK ROLL 345B
S/M RACHEL D061

ANCHOR T IKON 1H
JB CDN KANANASKIS 4019
KLONDIKE GOLD RUSH 418B
RAIN VALLEY EMMA

CE	BW	WW	YW	MCE	Milk	DOC	YG	Marb	REA	API
11.3	2.0	59.3	83.1	5.0	34.5	6.0	-0.54	-0.06	0.81	113.6

Polled/S, Single Goggle, 100% Fullblood Fleckvieh. Halfback was the best footed Fleckvieh we have owned and they calve very easy. His dam has excellent feet as well. Diluter Free. Dam's production 5 @ 103.

BULL

35

VE HALFBACK STEELE 37M

DOB. 3/22/24 • ASA#. 4491341 • Tattoo. 37M

Act BW. 87 • WR. 99 • YR. 101 • SC. 35.0 • PAP. 37

S/M DIESEL D141
S/M HALFBACK H081
S/M ROSE ANN F081

MOUNTAIN BOYZ GUERRERO
VE MBG STACY MAC 111J
MS VE RADIUM STACEY 847F

IPU RADIUM 20A
S/M FRANCESCA B141
PHS BANK ROLL 345B
S/M RACHEL D061

FGAF GUERRERO 810Y
TRIPLE T SHADOW 20E
CROSSROAD RADIUM 789U
DDD STACEY MAC

CE	BW	WW	YW	MCE	Milk	DOC	YG	Marb	REA	API
11.2	2.3	66.4	90.0	5.1	35.8	9.5	-0.60	-0.07	0.95	109.8

Polled, Blaze, 100% Fullblood Fleckvieh. This is the kind of Fleckvieh bull that will sire solid patterned calves. He is even red bellied which doesn't hurt in snow country. Diluter Free. Dam's production 1 @ 99, Grand dam's production 3 @ 109.

BULL

36

VE HALFBACK BALIST 77M

DOB. 5/15/24 • ASA#. 4491393 • Tattoo. 77M

Act BW. 84 • WR. 110 • YR. 109 • SC. 33.5 • PAP. 34

S/M DIESEL D141
S/M HALFBACK H081
S/M ROSE ANN F081

ANCHOR D IMAX 250Y
VE IMAX BALLAD 8G
MS VE 585 E709

IPU RADIUM 20A
S/M FRANCESCA B141
PHS BANK ROLL 345B
S/M RACHEL D061
HEMR SAMURAI 7S
DORA LEE ELEXIS
BRINK C585
A222

CE	BW	WW	YW	MCE	Milk	DOC	YG	Marb	REA	API
9.9	2.3	74.5	104.4	5.0	31.3	8.1	-0.59	-0.01	0.94	120.1

Polled, Red Blaze, 100% Fullblood Fleckvieh. A youngster that doesn't know it. Very dark, moderate, thick, and backed by top flight cows. His maternal brother sold last year to Bryan Boyle. Diluter Free. Dam's production 4 @ 107, Grand dam's production 3 @ 99.

BULL

37

VE ADVANCE HARLAN 39M

DOB. 3/22/24 • ASA#. 4491315 • Tattoo. 39M

Act BW. 91 • WR. 100 • YR. 95 • SC. 36.0 • PAP. 37

IPU ADVANCE 144Z
SPRINGCREEK ADVANCE 118H
SPRINGCREEK ABBEY 99E

GOLDEN DAWN DECKER
VE DECK HARLEY 758E
VE SOS HARLEY 305A

LFEISS BLACKADVANCE426U
IPU MS. BLACKBIRD 223T
LFE MCDAVID 413C
SPRINGCREEK ABBEY 10Z
MFI CENTER CUT 2291
GOLDEN DAWN MARTHA
SANDEENS SOS
JBD JF HELENKA 12W

CE	BW	WW	YW	MCE	Milk	DOC	YG	Marb	REA	API
7.4	3.2	65.5	93.5	2.3	17.6	14.0	-0.35	0.03	0.63	112.2

Polled, Solid Black, 3/4 SM 1/4 AN. These aren't first generation cows that are the mothers to this FleckAngus bull offering. Home raised, home grown, and have been for many generations. Buy with confidence. Dam's production 6 @ 94, Grand dam's production 9 @ 96. NEOGEN GGP.

BULL

39

VE HOLT PALMERO 12M

DOB. 3/12/24 • ASA#. 4491400 • Tattoo. 12M

Act BW. 75 • WR. 97 • YR. 93 • SC. 36.5 • PAP. 34

BLACK GOLD ELEVATION 20E
WOLFE HOLT FF 306H
SWANTEWITT BOLLY 306B

O C C WIZARD 601W
VE WZ PAULINE 152Y
PEV ND 878 PAULINE 2T4

SOUTHSEVEN MR ADONIS 96Z
BLACK GOLD MS FLORA 84B
CHERRY CREEK CARLSBERG 25
SWANTEWITT HOLLY 80W
O C C MISSING LINK 830M
O C C JUANADA 700J
BON VIEW NEW DESIGN 878
P E V EXT PAULINE 2L10

CE	BW	WW	YW	MCE	Milk	DOC	YG	Marb	REA	API
14.2	-0.5	54.3	74.6	8.4	34.5	11.8	-0.18	0.16	0.46	117.9

Polled/S, Black Star, 1/2 SM 1/2 AN. A low birth weight prospect from one of the oldest most productive cows on the place. Dam's production 10 @ 106, Grand dam's production 9 @ 100.

BULL

40

VE ADVANCE PALM 72M

DOB. 4/25/24 • ASA#. 4491316 • Tattoo. 72M

Act BW. 80 • WR. 106 • YR. 102 • SC. 35.0 • PAP. 38

IPU ADVANCE 144Z
SPRINGCREEK ADVANCE 118H
SPRINGCREEK ABBEY 99E

GOLDEN DAWN DECKER
VE DECK PAULINE 103G
VE ABE PAULINE 496B

LFEISS BLACKADVANCE426U
IPU MS. BLACKBIRD 223T
LFE MCDAVID 413C
SPRINGCREEK ABBEY 10Z
MFI CENTER CUT 2291
GOLDEN DAWN MARTHA
JCS ABRAM Z121
VE WZ PAULINE 152Y

CE	BW	WW	YW	MCE	Milk	DOC	YG	Marb	REA	API
8.3	2.5	74.7	106.6	1.9	21.7	10.7	-0.36	0.02	0.76	115.7

Polled, Black Blaze, 3/4 SM 1/4 AN. A bit younger but packing some heat. Another "8 Ball" that could go anywhere sight unseen and the new owner will be pleased. Dam's production 3 @ 103, Grand dam's production 8 @ 108. NEOGEN GGP.



VE IMAX BALLAD 8G - DAM OF LOT 36

BULL

38

VE ECLIPSE JETT 17M

DOB. 3/14/24 • ASA#. 4491369 • Tattoo. 17M

Act BW. 84 • WR. 88 • YR. 92 • SC. 33.0 • PAP. 40

VE-EDP CUT RIGHT 362E
VE CUT R ECLIPSE 32J
VE SAG ELIPSE 431B

JBD 3XM 39T
VE 3X JETTON 287Z
VE PIC PIZAAZZ 245R

MFI CENTER CUT 2291
GOLDEN DAWN MS STROLLER
KCC SAGINAW 6W
JBD ELLY 231S
GIULIANI
JBD HELENA 32R
3C PICASSO F955 BZ
VE 9434 ANGUS

CE	BW	WW	YW	MCE	Milk	DOC	YG	Marb	REA	API
14.0	-0.4	48.6	70.0	8.9	25.1	10.9	-0.13	0.23	0.35	109.5

Polled, Black Brockle, 1/2 SM 1/2 AN. Great feet, udders, and fertility run deep in this pedigree. A very nice heifer bull candidate. Dam's production 11 @ 101, Grand dam's production 9 @ 106. NEOGEN GGP.



VE WZ PAULINE 152Y - LOT 39



LOT 40

BULL

VE ADVANCE PRINTER 63M

41

DOB. 4/13/24 • ASA#. 4491394 • Tattoo. 63M

Act BW. 79 • WR. 94 • YR. 100 • SC. 35.0 • PAP. 39

IPU ADVANCE 144Z
SPRINGCREEK ADVANCE 118H
SPRINGCREEK ABBEY 99E

LFEISS BLACKADVANCE426U
IPU MS. BLACKBIRD 223T
LFE MCDAVID 413C
SPRINGCREEK ABBEY 10Z

O C C JET STREAM 825J
VE JET PAULINE 601D
VE ABE PAULINE 496B

O C C EMBLAZON 854E
O C C JUANADA 968G
JCS ABRAM Z121
VE WZ PAULINE 152Y

CE	BW	WW	YW	MCE	Milk	DOC	YG	Marb	REA	API
9.3	1.5	67.9	100.6	1.2	22.7	10.9	-0.23	0.08	0.68	115.0

Polled, Solid Black, 5/8 SM 3/8 AN. A very solid bull backed by very predictable genes. His dam is a modest sized, beautiful preformer. Tony Holsten selected his full brother last year. Dam's production 7 @ 96, Grand dam's production 8 @ 108. NEOGEN GGP.

BULL

VE ECLIPSE EFTON 9M

43

DOB. 3/10/24 • ASA#. 4491321 • Tattoo. 9M

Act BW. 89 • WR. 97 • YR. 108 • SC. 38.0 • PAP. 40

VE-EDP CUT RIGHT 362E
VE CUT R ECLIPSE 32J
VE SAG ELIPSE 431B

MFI CENTER CUT 2291
GOLDEN DAWN MS STROLLER
KCC SAGINAW 6W
JBD ELLY 231S

OCC JETFECK 133N
VE JETFLECK EFA 412B
VE MC EFFIE 28X

O C C JET STREAM 825J
MISS ARNOLD C5368
3C MACHO M450 BZ
HDDUNNBLACKCAP EFFIE7281

CE	BW	WW	YW	MCE	Milk	DOC	YG	Marb	REA	API
10.4	1.8	69.0	109.8	5.6	19.9	14.7	-0.21	0.10	0.45	112.9

Polled, Black Star, 1/2 SM 1/2 AN. Solid and stout made with tremendous thickness. Justin Williams purchased a maternal brother to this bull. Dam's production 9 @ 101, Grand dam's production 4 @ 104. NEOGEN GGP.



BULL

VE HOLT KD WYE 32M

42

DOB. 3/19/24 • ASA#. 4491327 • Tattoo. 32M

Act BW. 82 • WR. 92 • YR. 99 • SC. 37.0 • PAP. 31

BLACK GOLD ELEVATION 20E
WOLFE HOLT FF 306H
SWANTEWITT BOLLY 306B

SOUTHSEVEN MR ADONIS 96Z
BLACK GOLD MS FLORA 84B
CHERRY CREEK CARLSBERG 2S
SWANTEWITT HOLLY 80W

O C C ZAMIR 412Z
VE ZAM KD WYE 695D
COLORADO K D WYE 546-4

O C C JET STREAM 825J
O C C JUANADA 826R
KILKELLY DUKE
LEGENDARY WYETTA 546

CE	BW	WW	YW	MCE	Milk	DOC	YG	Marb	REA	API
13.2	0.1	50.1	79.1	6.8	27.4	8.8	-0.20	0.16	0.40	111.3

Polled, Black Blaze, 1/2 SM 1/2 AN. Holt has worked well on purebred Angus cows. We feel our Angus cows aren't average, but unique foundation bred gems. Dam's production 1 @ 92. Grand dam's production 3 @ 98. NEOGEN GGP.

BULL

VE BRICK CASCADE 48M

44

DOB. 3/30/24 • ASA#. 4491302 • Tattoo. 48M

Act BW. 89 • WR. 93 • YR. 98 • SC. 36.0 • PAP. 42

SRH BRICK 53E
TCM TRI-STAR MR. BRICK 50G
SILVERLAKE FANCY 184C

SVS AMARILLO 535C
SRH MISS MAKER 65B
SILVERLAKE ZEEMAN
WXR REPATHS MISS 63W

ANGUS
VE 9 ANGUS
ANGUS

ANGUS
ANGUS
ANGUS
ANGUS

CE	BW	WW	YW	MCE	Milk	DOC	YG	Marb	REA	API
9.7	2.0	62.7	97.7	6.6	25.8	4.5	-0.28	0.18	0.59	105.6

Polled, Black Blaze, 1/2 SM 1/2 AN. The Brick cattle have done well for us and will continue to make an impact. This bull is 1/4 Fleckvieh.

BULL

VE HALFBACK PALCO 33M

45

DOB. 3/20/24 • ASA#. 4491409 • Tattoo. 33M

Act BW. 83 • WR. 96 • YR. 100 • SC. 36.0 • PAP. 40

S/M DIESEL D141
S/M HALFBACK H081
S/M ROSE ANN F081

IPU RADIUM 20A
S/M FRANCESCA B141
PHS BANK ROLL 345B
S/M RACHEL D061

DREAM OF HAGUE 618
VE 618 PAULINE 74G
VE WZ PAULINE 152Y

RESURGAM BLU-PRINT T368
DDA STELLA 443
O C C WIZARD 601W
PEV ND 878 PAULINE 2T4

CE	BW	WW	YW	MCE	Milk	DOC	YG	Marb	REA	API
14.7	0.0	61.5	95.3	8.2	27.5	12.7	-0.21	0.21	0.46	118.9

Polled, Black Blaze, 1/2 SM 1/2 AN. Fancy, quiet, and has that notice me mentality. A high quality bull. Dam's production 2 @ 99, Grand dam's production 10 @ 106. NEOGEN GGP.

BULL

VE EXBLZ DIXIECRAT 19M

46

DOB. 3/15/24 • ASA#. 4491389 • Tattoo. 19M

Act BW. 79 • WR. 101 • YR. 105 • SC. 37.0 • PAP. 39

O C C ANVIL 809A
OCC EXCEPTIONAL BLAZE 149E
OCC SCARLETT 111S

O C C MISSING LINK 830M
FCC BLACKCAP LADY 3810
O C C JET STREAM 825J
OCC MISS ARNOLD 134M

MCM TOP GRADE 018X
VE TG DIXIE ERICA 500C
VE TLP DIXIE ERICA 177Y

MR NLC UPGRADE U8676
MCM 513R
TREE LANE STAR POWER 137
HD DUNN DIXIE ERICA 7294

CE	BW	WW	YW	MCE	Milk	DOC	YG	Marb	REA	API
11.8	-0.6	58.7	89.5	3.4	25.8	11.5	-0.07	0.39	0.28	132.1

Polled, Black Single Goggle, 3/8 SM 5/8 AN. His dam is one of the cows that produces top end bulls year after year. Your opportunity to own a dandy. Homozygous Polled. Dam's production 7 @ 102, Grand dam's production 6 @ 103. NEOGEN GGP.

BULL

47

VE GULF WILLARD 29M

DOB. 3/18/24 • ASA#. 4491407 • Tattoo. 29M

Act BW. 75 • WR. 98 • YR. 99 • SC. 35.0 • PAP. 39

O C C JET STREAM 939W
OCC GULF STREAM 183Z
 OCC TONI 134T

BBB VE TEN MILE 169Y
VE TM WILMA 556C
 VE TH WILMA 221Z

O C C JET STREAM 825J
 O C C JUANADA 861T
 O C C MITCHELL 831M
 MISS ARNOLD F9708
 MR NLC UPGRADE U8676
 PRIDEMERE R K 28
 CONNEALY THUNDER
 MISS YARDLEY R127

CE	BW	WW	YW	MCE	Milk	DOC	YG	Marb	REA	API
12.0	-0.8	53.6	86.1	3.5	20.8	12.9	-0.12	0.26	0.27	117.1

Polled, Solid Black, 3/8 SM 5/8 AN. Low birth, smooth shouldered bull with lots of eye appeal. Best advice for ranchers that I know is buy bulls that are raised in a similar environment to your own. Dam's production 6 @ 99. Grand dam's production 11 @ 98. NEOGEN GGP.

BULL

48

VE ADVANCE BURGESSON 61M

DOB. 4/11/24 • ASA#. 4491405 • Tattoo. 61M

Act BW. 90 • WR. 112 • YR. 104 • SC. 37.0 • PAP. 36

IPU ADVANCE 144Z
SPRINGCREEK ADVANCE 118H
 SPRINGCREEK ABBEY 99E

O C C JET STREAM 825J
VE JET BURGESS 511C
 VE PATH BURGESS 360A

LFEISS BLACKADVANCE426U
 IPU MS. BLACKBIRD 223T
 LFE MCDAVID 413C
 SPRINGCREEK ABBEY 10Z
 O C C EMBLAZON 854E
 O C C JUANADA 968G
 DESS PATHFINDER 3R
 PEV EXT BURGESS 12P8

CE	BW	WW	YW	MCE	Milk	DOC	YG	Marb	REA	API
6.2	3.9	83.1	116.7	0.8	20.4	9.9	-0.22	0.10	0.70	112.5

Polled, Solid Black, 3/4 SM 1/4 AN. A larger outlined bull that will be sure to get noticed and sire performance. Very good temperament as well. Dam's production 7 @ 103, Grand dam's production 2 @ 110.

BULL

50

VE ADVANCE AVANT 45M

DOB. 3/27/24 • ASA#. 4491283 • Tattoo. 45M

Act BW. 91 • WR. 102 • YR. 97 • SC. 35.0 • PAP. 43

IPU ADVANCE 144Z
SPRINGCREEK ADVANCE 118H
 SPRINGCREEK ABBEY 99E

O C C WORK OF ART 766W
OCC AVEREE 104C
 OCC AVEREE 100A

LFEISS BLACKADVANCE426U
 IPU MS. BLACKBIRD 223T
 LFE MCDAVID 413C
 SPRINGCREEK ABBEY 10Z
 O C C GREAT PLAINS 943G
 O C C DIXIE ERICA 662J
 O C C NEVILLE 659N
 OCC NELLIE 125N

CE	BW	WW	YW	MCE	Milk	DOC	YG	Marb	REA	API
5.9	3.6	73.4	103.6	-1.5	20.7	12.9	-0.19	0.11	0.64	103.4

Polled, Solid Black, 1/2 SM 1/2 AN. This bull will mature into a bigger bull, backed by a powerful cow. He will develop into a good herd bull. Dam's production 5 @ 106, Grand Dam's production 2 @ 110. NEOGEN GGP.

BULL

52

VE ADVANCE PRINCETON 25M

DOB. 3/17/24 • ASA#. 4491395 • Tattoo. 25M

Act BW. 85 • WR. 104 • YR. 105 • SC. 38.0 • PAP. 35

IPU ADVANCE 144Z
SPRINGCREEK ADVANCE 118H
 SPRINGCREEK ABBEY 99E

GOLDEN DAWN DECKER
VE DECK BURGESS PRIDE 128G
 PEV ND878 BURGESS PRIDE 82T1

LFEISS BLACKADVANCE426U
 IPU MS. BLACKBIRD 223T
 LFE MCDAVID 413C
 SPRINGCREEK ABBEY 10Z
 MFI CENTER CUT 2291
 GOLDEN DAWN MARTHA
 BON VIEW NEW DESIGN 878
 BT BURGESS PRIDE 782R

CE	BW	WW	YW	MCE	Milk	DOC	YG	Marb	REA	API
8.4	2.2	74.8	111.8	2.9	23.1	9.8	-0.27	0.12	0.61	116.4

Polled, Black Blaze, 5/8 SM 3/8 AN. Real performance that we expect from this designed mating. His dam is small but mighty, weaning 63% of her body weight. Dam's production 4 @ 105, Grand dam's production 3 @ 109. NEOGEN GGP.



BULL

49

VE REAR AXLE PRIME 60M

DOB. 4/6/24 • ASA#. 4491365 • Tattoo. 60M

Act BW. 88 • WR. 102 • YR. 103 • SC. 34.0 • PAP. 41

O C C REAR END 751R
OCC REAR AXLE 270J
 OCC PAISLEY 160P

SPRINGCREEK SPARK 101F
VE SPARK PRIDE 66H
 VE ABE PRIDE 596C

O C C HOMER 650H
 FCC REVOLUTION ROSE 995N
 O C C JET STREAM 825J
 MISS ARNOLD E5568
 SPRINGCREEK SPARK PLUG
 SPRINGCREEK LIMA 155Z
 JCS ABRAM Z121
 PEV ND 878 PRIDE 67T1

CE	BW	WW	YW	MCE	Milk	DOC	YG	Marb	REA	API
8.3	1.9	67.2	99.2	3.5	25.5	14.9	-0.26	0.16	0.59	116.6

Polled, Solid Black, 1/2 SM 1/2 AN. Our Dakota's bull out of her Spark daughter, very unique in his breeding but he fits our mold of SimAngus cattle. Dam's production 3 @ 100. Grand dam's production 5 @ 99. NEOGEN GGP.

BULL

51

VE HOLT SIOUX 70M

DOB. 4/23/24 • ASA#. 4491342 • Tattoo. 70M

Act BW. 94 • WR. 111 • YR. 109 • SC. 37.5 • PAP. 40

BLACK GOLD ELEVATION 20E
WOLFE HOLT FF 306H
 SWANTEWITT BOLLY 306B

MOHNEN HULK Y2181
VE HLK MAHOGANY SUE 413B
 HD DUNN BLACKBIRD 7355

SOUTHSEVEN MR ADONIS 96Z
 BLACK GOLD MS FLORA 84B
 CHERRY CREEK CARLSBERG 2S
 SWANTEWITT HOLLY 80W
 JF MILESTONE 999W
 MOHNEN JILT 1655
 BROOKS ABOVE PAR
 HD DUNN BLACKBIRD 3351

CE	BW	WW	YW	MCE	Milk	DOC	YG	Marb	REA	API
7.5	3.7	83.0	122.3	6.7	25.5	2.5	-0.28	0.09	0.54	120.7

Polled, Black Star, 3/4 SM 1/4 AN. Powerfully built with lots of growth from a sound footed cow family. Grand dam lived here a long time and had great feet at 13. Dam's production 6 @ 102, Grand dam's production 8 @ 101. NEOGEN GGP.





LOT 53

BULL

54

VE HOLT ROLO 85M

DOB. 3/29/24 • ASA#. 4491419 • Tattoo. 85M

Act BW. 88 • WR. 99 • YR. 102 • SC. 37.0 • PAP. 37

BLACK GOLD ELEVATION 20E
WOLFE HOLT FF 306H
SWANTEWITT BOLLY 306B

SOUTHSEVEN MR ADONIS 96Z
BLACK GOLD MS FLORA 84B
CHERRY CREEK CARLSBERG 25
SWANTEWITT HOLLY 80W

ANGUS
VE 26 ANGUS
ANGUS

ANGUS
ANGUS
ANGUS
ANGUS

CE	BW	WW	YW	MCE	Milk	DOC	YG	Marb	REA	API
9.4	2.4	68.2	101.2	6.1	29.1	12.0	-0.32	0.14	0.65	111.4

Polled/S, Solid Black, 1/2 SM 1/2 AN. We have yet to pull a Holt sired calf for any reason and they get up and go. Dam's production 1 @ 99.

BULL

56

VE BRICK JASPER 57M

DOB. 4/2/24 • ASA#. 4491336 • Tattoo. 57M

Act BW. 89 • WR. 90 • YR. 98 • SC. 36.5 • PAP. 33

SRH BRICK 53E
TCM TRI-STAR MR. BRICK 50G
SILVERLAKE FANCY 184C

SVS AMARILLO 535C
SRH MISS MAKER 65B
SILVERLAKE ZEEMAN
WXR REPATHS MISS 63W

3C RSVP N541 BZ
VE MISS 75X
VE MISS 22

MEYER RANCH 73A
MISS GX 728R
LEACHMAN HEAVENLY 8141
D219

CE	BW	WW	YW	MCE	Milk	DOC	YG	Marb	REA	API
8.5	2.8	58.5	92.3	5.7	25.7	7.2	-0.25	0.21	0.47	107.9

Horned, Black Star, 5/8 SM 3/8 AN. His dam stood the test of time here and was culled by choice due to age but was pregnant. RSVP sired fabulous cows across the US. Dam's production 8 @ 99.



SPRINGCREEK PARAMOUNT 105K - SIRE OF LOT 58

BULL

53

VE REAR AXLE DANE 56M

DOB. 4/2/24 • ASA#. 4491340 • Tattoo. 56M

Act BW. 89 • WR. 107 • YR. 107 • SC. 35.0 • PAP. 37

O C C REAR END 751R
OCC REAR AXLE 270J
OCC PAISLEY 160P

O C C HOMER 650H
FCC REVOLUTION ROSE 995N
O C C JET STREAM 825J
MISS ARNOLD E5568

BIG HILLS VALUE 262E
VE MAPLE DANDY 65J
MS VE 585 E701

STARWEST TOTAL VALUE
MCM MS SA BRITT 15B
BRINK C585
C514

CE	BW	WW	YW	MCE	Milk	DOC	YG	Marb	REA	API
5.9	3.2	76.7	105.0	1.7	25.6	12.3	-0.37	0.09	0.78	111.0

Horned, Black Star, 5/8 SM 3/8 AN. Dam is a fullblood Fleckvieh cow with some mass. A high quality performance bull that will breed well. Horned bulls are tighter sheathed, very fertile aggressive breeders. Dam's production 1 @ 107, Grand dam's production 5 @ 104.

BULL

55

VE REAR AXLE MAC 46M

DOB. 3/29/24 • ASA#. 4491404 • Tattoo. 46M

Act BW. 86 • WR. 91 • YR. 97 • SC. 33.0 • PAP. 35

O C C REAR END 751R
OCC REAR AXLE 270J
OCC PAISLEY 160P

O C C HOMER 650H
FCC REVOLUTION ROSE 995N
O C C JET STREAM 825J
MISS ARNOLD E5568

O C C ZAMIR 412Z
VE ZAMIR MAE 516C
MS VE SOS MAE 325A

O C C JET STREAM 825J
O C C JUANADA 826R
SANDEENS SOS
JBD MEGAN 316T

CE	BW	WW	YW	MCE	Milk	DOC	YG	Marb	REA	API
9.9	1.2	53.6	82.8	2.7	24.0	14.3	-0.07	0.3	0.31	111.9

Polled, Solid Black, 1/4 SM 3/4 AN. Very quiet, smooth made bull that should work on 2nd calvers. Dam's production 8 @ 96, Grand dam's production 7 @ 112. NEOGEN GGP.

BULL

57

VE HOLT ANDRE 40M

DOB. 3/23/24 • ASA#. 4491313 • Tattoo. 40M

Act BW. 85 • WR. 87 • YR. 95 • SC. 34.0 • PAP. 39

BLACK GOLD ELEVATION 20E
WOLFE HOLT FF 306H
SWANTEWITT BOLLY 306B

SOUTHSEVEN MR ADONIS 96Z
BLACK GOLD MS FLORA 84B
CHERRY CREEK CARLSBERG 25
SWANTEWITT HOLLY 80W

O C C ZAMIR 412Z
VE ZAMIR ANNIE 858F
COLORADO K D ANNIE 4626-1

O C C JET STREAM 825J
O C C JUANADA 826R
KILKELLY DUKE
WOODSTONE ANNIE 4626

CE	BW	WW	YW	MCE	Milk	DOC	YG	Marb	REA	API
13.0	0.6	45.1	69.8	6.9	27.6	8.2	-0.20	0.16	0.38	107.9

Polled/S, Black Blaze, 1/2 SM 1/2 AN. The Zamir cows are quiet, attentive mothers that really excel here. His EPD's won't blow you away if you are into breeding numbers. But if the model Angus cows are to your liking, then he will do. Dam's production 4 @ 94, Grand dam's production 8 @ 96.

BULL

58

VE PARAMOUNT PATCH 79M

DOB. 5/24/24 • ASA#. 4491332 • Tattoo. 79M

Act BW. 92 • WR. 99 • YR. • SC. 34.0 • PAP. 38

RENDEZVOUS PARAMOUNT 230F
SPRINGCREEK PARAMOUNT 105K
SPRINGCREEK LIMA 45D

LFE BS LEWIS 3173C
RENDEZVOUS LINNE 230D
SPRINGCREEK GOLD STANDARD
SPRINGCREEK LIMA 155Z

VE-EDP CUT RIGHT 362E
VE CUT R PAULINE 107J
VE ABE PAULINE 496B

MFI CENTER CUT 2291
GOLDEN DAWN MS STROLLER
JCS ABRAM Z121
VE WZ PAULINE 152Y

CE	BW	WW	YW	MCE	Milk	DOC	YG	Marb	REA	API
11.4	2.9	70.7	103.4	6.8	22.9	7.9	-0.33	-0.06	0.74	112.6

Polled, Black Star, 3/4 SM 1/4 AN. Sired by our high selling 2 year old bull last year. He is young and mighty and had a late birthday because of a pasture issue. His dam is tremendous and his sister just calved in nicely. Lots of upside! Dam's production 2 @ 102, Grand dam's production 8 @ 108. NEOGEN GGP.

BULL

59

VE JUSTUS ELF 6M

DOB. 3/4/24 • ASA#. 4491415 • Tattoo. 6M

Act BW. 71 • WR. 100 - ET • YR. 100 - ET • SC. 34.0 • PAP. 34

SHAWACRES JAHARI 50L
DOUBLE BAR D JUSTUS 269X
MFI MISS FEODORA 6189

KCC SAGINAW 6W
VE SAG ELLY 430B
JBD ELLY 231S

BHR DOORN G629E
MISS SHAWACRES HEIDI 1H
MFI WHISTLER 47L
MFI MISS FEODORA 1L
DCC NEW LOOK 101
KCC 26J
3C PICASSO F955 BZ
VE 9288 ANGUS

CE	BW	WW	YW	MCE	Milk	DOC	YG	Marb	REA	API
3.4	5.3	71.8	107.5	1.4	25.8	10.1	-0.43	0.10	0.74	106.5

Polled, Solid Black, 3/4 SM 1/4 AN, Embryo Transfer. A full brother to Lot 19 but different recip of course. Born in the bitter cold and yet survived. Dam's production 7 @ 104, Grand dam's production 9 @ 102. NEOGEN GGP.



DOUBLE BAR D JUSTUS 269X - SIRE OF LOT 59

BULL

60

VE BRICK ROMAN 58M

DOB. 4/5/24 • ASA#. 4491381 • Tattoo. 58M

Act BW. 82 • WR. 95 • YR. 99 • SC. 34.0 • PAP. 37

SRH BRICK 53E
TCM TRI-STAR MR. BRICK 50G
SILVERLAKE FANCY 184C

O C C JUNEAU 807J
VE JUNEAU ROSETTA 14J
MEYER ROSETTA 213Z

SVS AMARILLO 535C
SRH MISS MAKER 65B
SILVERLAKE ZEEMAN
WXR REPATHS MISS 63W
O C C EMBLAZON 854E
O C C DIXIE ERICA 903E
SOO LINE MOTIVE 9016
FCC ROSETTA 824U

CE	BW	WW	YW	MCE	Milk	DOC	YG	Marb	REA	API
9.7	0.8	62.5	96.4	2.2	29.6	6.5	-0.19	0.17	0.56	116.8

Polled, Solid Black, 1/2 SM 1/2 AN. Dam is a full sib to Juneau Roster 1J. She has high marks and is just a young cow. Dam's production 2 @ 109. NEOGEN GGP.



LOT 60

BULL

61

VE HALFBACK LINK 55M

DOB. 4/2/24 • ASA#. 4491367 • Tattoo. 55M

Act BW. 68 • WR. 97 • YR. 97 • SC. 38.0 • PAP. 40

S/M DIESEL D141
S/M HALFBACK H081
S/M ROSE ANN F081

SANDEENS SOS
VE SOS LINA 209Z
JBD RH LINDY 11W

IPU RADIUM 20A
S/M FRANCESCA B141
PHS BANK ROLL 345B
S/M RACHEL D061
DJ SALUTE G509
K022_
SAND RANCH HAND
8426_

CE	BW	WW	YW	MCE	Milk	DOC	YG	Marb	REA	API
13.3	-0.8	55.5	83.3	5.4	28.7	0.9	-0.35	0.11	0.55	122.8

Polled, Black Snip 3/4 SM 1/4 AN. Low birth weight stomper that demands attention. Moderate framed and very thick. Dam's production 10 @ 96, Grand dam's production 5 @ 109. NEOGEN GGP.



LOT 61

BULL

62

VE BRICK TONKA 64M

DOB. 4/13/24 • ASA#. 4491357 • Tattoo. 64M

Act BW. 75 • WR. 100 • YR. 101 • SC. 34.0 • PAP. 37

SRH BRICK 53E
TCM TRI-STAR MR. BRICK 50G
SILVERLAKE FANCY 184C

VE-EDP CUT RIGHT 362E
VE CUT R TINA 106H
VE 3X PIZAZZ 276Z

SVS AMARILLO 535C
SRH MISS MAKER 65B
SILVERLAKE ZEEMAN
WXR REPATHS MISS 63W
MFI CENTER CUT 2291
GOLDEN DAWN MS STROLLER
JBD 3XM 39T
VE 154R

CE	BW	WW	YW	MCE	Milk	DOC	YG	Marb	REA	API
10.8	1.9	66.5	106.2	6.5	20.0	1.1	-0.35	0.05	0.62	122.6

Polled/S, Solid Red. 3/4 SM 1/4 AN. Very Correct made bull that could be useful in a number of matings. A full brother sold to Tyson Poole last year. Dam's production 3 @ 90, Grand dam's production 9 @ 104.

BULL

63

VE REAR AXLE HERO 68M

DOB. 4/17/24 • ASA#. 4491317 • Tattoo. 68M

Act BW. 87 • WR. 99 • YR. 99 • SC. 33.0 • PAP. 36

O C C REAR END 751R
OCC REAR AXLE 270J
OCC PAISLEY 160P

VE RAIDER ELIP 40G
VE ELIP HELENA 28J
VE SOS HELENA 538C

O C C HOMER 650H
FCC REVOLUTION ROSE 995N
O C C JET STREAM 825J
MISS ARNOLD E5568
MEYER VE RED RAIDER 101B
VE SAG ELIPSE 431B
SANDEENS SOS
JBD JF HELENA 19U

CE	BW	WW	YW	MCE	Milk	DOC	YG	Marb	REA	API
7.6	2.1	61.3	88.0	2.6	23.7	13.2	-0.2	0.28	0.52	114.0

Polled, Solid Black, 1/2 SM 1/2 AN. Backed by the Helen cow family that produced our 3XM bull whose daughters have worn like iron. Very unique pedigree to study. Dam's production 2 @ 95, Grand dam's production 7 @ 107.

BULL

VE BRICK BURGLER 44M

DOB. 3/27/24 • ASA#. 4491385 • Tattoo. 44M

Act BW. 87 • WR. 95 • YR. 98 • SC. 36.0 • PAP. 46

64

SRH BRICK 53E
TCM TRI-STAR MR. BRICK 50G
SILVERLAKE FANCY 184C

DREAM OF HAGUE 618
VE 618 BURGESS 110H
VE ZAMIR BURGESS 691D

SVS AMARILLO 535C
SRH MISS MAKER 65B
SILVERLAKE ZEEMAN
WXR REPATHS MISS 63W
RESURGAM BLU-PRINT T368
DDA STELLA 443
O C C ZAMIR 412Z
VE WZ BURGESS 161Y

CE	BW	WW	YW	MCE	Milk	DOC	YG	Marb	REA	API
11.3	1.4	58.1	90.5	6.3	23.4	6.6	-0.16	0.23	0.38	116.6

Polled, Black Snip, 1/2 SM 1/2 AN. Total outcross pedigree to be used most anywhere. Dam is moderate and fancy uddered just the way that cow family makes them. Dam's production 2 @ 97, Grand dam's production 3 @ 103. NEOGEN GGP.



VE UNLIMIT BONE 38J - SIRE OF LOTS 66 & 31

BULL

VE BRICK DIXON 69M

DOB. 4/20/24 • ASA#. 4491339 • Tattoo. 69M

Act BW. 82 • WR. 101 • YR. 98 • SC. 34.0 • PAP. 45

67

SRH BRICK 53E
TCM TRI-STAR MR. BRICK 50G
SILVERLAKE FANCY 184C

O C C ZAMIR 412Z
VE ZAM DIXIE ERICA 621D
VE RGS DIXIE ERICA 203Z

SVS AMARILLO 535C
SRH MISS MAKER 65B
SILVERLAKE ZEEMAN
WXR REPATHS MISS 63W
O C C JET STREAM 825J
O C C JUANADA 826R
COLEMAN REGIS 904
HD DUNN DIXIE ERICA 631Z

CE	BW	WW	YW	MCE	Milk	DOC	YG	Marb	REA	API
14.2	-0.1	58.0	88.5	7.1	24.1	6.5	-0.16	0.19	0.38	123.8

Polled, Solid Black, 1/2 SM 1/2 AN. We feed our bulls to last not sell for a high average. Lots of games are played in the seedstock, choose your source wisely. Dam's production 6 @ 99, Grand dam's production 2 @ 96. NEOGEN GGP.

BULL

VE BRICK PROMPT 42M

DOB. 3/26/24 • ASA#. 4491386 • Tattoo. 42M

Act BW. 92 • WR. 98 • YR. 94 • SC. 36.0 • PAP. 41

65

SRH BRICK 53E
TCM TRI-STAR MR. BRICK 50G
SILVERLAKE FANCY 184C

DREAM OF HAGUE 618
VE 618 PROMINENT 120G
VE DEFEND PROMINENT 679D

SVS AMARILLO 535C
SRH MISS MAKER 65B
SILVERLAKE ZEEMAN
WXR REPATHS MISS 63W
RESURGAM BLU-PRINT T368
DDA STELLA 443
CO KILKELLY DEFENDER 52A
P E V EXT PRIDE 67L4

CE	BW	WW	YW	MCE	Milk	DOC	YG	Marb	REA	API
11.9	1.9	54.7	82.9	9.6	20.8	3.6	-0.16	0.20	0.39	108.6

Polled, Black Blaze, 1/2 SM 1/2 AN. A chunky lad with sound running gear. We certainly breed and select for a certain type of hind leg and feet. It's evident in the offering. Dam's production 2 @ 95, Grand dam's production 5 @ 103. NEOGEN GGP.

BULL

VE BONE REIGN 74M

DOB. 4/27/24 • ASA#. 4491331 • Tattoo. 74M

Act BW. 79 • WR. 102 • YR. 102 • SC. 34.0 • PAP. 40

66

S C C 328F
VE UNLIMIT BONE 38J
VE JUSTUS BARBARA 32G

O C C JET STREAM 825J
VE JET REIA 52G
VE WZ REIA 176Y

O C C UNLIMITED 940U
S C C DIXIE ERICA 983B
DOUBLE BAR D JUSTUS 269X
VE BLACK C BARBARA 633D
O C C EMBLAZON 854E
O C C JUANADA 968G
O C C WIZARD 601W
P E V EXT REIA J282

CE	BW	WW	YW	MCE	Milk	DOC	YG	Marb	REA	API
11.9	-0.7	61.9	96.9	3.4	25.4	10.2	0.10	0.33	0.08	111.9

Polled/S, Black Blaze, 1/2 SM 1/2 AN. A bull good enough to start the sale with and picture worthy. Hard topped yearling bulls are hard to find behind feed wagons and stud sired cattle. Dam's production 3 @ 104, Grand dam's production 8 @ 98.

BULL

VE BRICK EFFECT 76M

DOB. 5/3/24 • ASA#. 4491303 • Tattoo. 76M

Act BW. 90 • WR. 102 • YR. 103 • SC. 33.0 • PAP. 36

68

SRH BRICK 53E
TCM TRI-STAR MR. BRICK 50G
SILVERLAKE FANCY 184C

VE NE RONNY 862C
VE RONNIE EFFIE 909F
VE MC EFFIE 29X

SVS AMARILLO 535C
SRH MISS MAKER 65B
SILVERLAKE ZEEMAN
WXR REPATHS MISS 63W
DUFF NEW EDITION 6108
FCC ROSETTA 984N
3C MACHO M450 BZ
HDDUNNBLACKCAP EFFIE7281

CE	BW	WW	YW	MCE	Milk	DOC	YG	Marb	REA	API
8.8	2.7	65.0	104.3	4.6	21.5	7.0	-0.23	0.20	0.42	119.6

Polled, Solid Black, 5/8 SM 3/8 AN. A youngster that will grow up. We always like to have a spare, fresh bull ready to go in June. Dam's production 4 @ 102, Grand dam's production 7 @ 98.



COMMERCIAL HEIFERS

GROUP

69

GROUP OF 3 - COMMERCIAL 8 BALL DAUGHTERS

Commercial Black SimAngus open yearling heifers sired by Springcreek Advance 118H, born March - April 2024. 3/4 SM 1/4 AN. Dewormed and spring vaccinated. Green Tags.

GROUP

71

GROUP OF 3 - COMMERCIAL HOLT DAUGHTERS

Commercial Black SimAngus open yearling heifers sired by Wolfe Holt FF 306H. Born March - April 2024. 1/2 SM 1/2 AN. Dewormed and spring vaccinated. Yellow Tags.

GROUP

73

GROUP OF 3 - COMMERCIAL HALFBACK DAUGHTERS

Commercial Black SimAngus open yearling heifers born March - April 2024. Sired by S/M Halfback H081. 1/2 SM 1/2 AN. Dewormed and spring vaccinated. Purple Tags.

GROUP

75

GROUP OF 3 - COMMERCIAL RED HEIFERS

Commercial Red SimAngus open yearling heifers born March - April 2024. Sired by Brick, Maverick and Halfback. 1/2 to FB SM. Dewormed and spring vaccinated. Pink Tags.

GROUP

70

GROUP OF 3 - COMMERCIAL BONE DAUGHTERS

Commercial Black SimAngus open yearling heifers sired by VE Unlimit Bone 38J ASA#3986829. Born March - April 2024, 1/8 to 5/8 SimAngus. Dewormed and spring vaccinated. Red Tags.

GROUP

72

GROUP OF 3 - COMMERCIAL OCC REAR AXLE DAUGHTERS

Commercial Black SimAngus open yearling heifers sired by OCC Rear Axle 270J. Born March - April 2024. 1/8 to 3/8 SimAngus. Dewormed and spring vaccinated. Orange Tags.

GROUP

74

GROUP OF 3 - REGISTERED FULLBLOOD FLECKVIEH HEIFERS

Registered 100% Fullblood Fleckvieh open yearling heifers born March 2024. Sired by Anchor D Imax (1), Halfback (2). Dewormed and spring vaccinated. White Tags.

GROUP

76

GROUP OF 7 - COMMERCIAL BLACK HEIFERS

Commercial Black SimAngus open yearling heifers born March - April 2024. Sired by VE herd sires identified on ear tag. Dewormed and spring vaccinated. Blue Tags.

FEMALES

PICKS OF THE HERD



PICK

77

PICK - 1 REGISTERED OPEN YEARLING HEIFER

Offering pick of 1 registered open yearling heifer from our replacement pen (except 2 that our kids own). The winning bidder can select from ET, AI and herd bull sired. This lot needs to be chosen within a week after our sale date.

PICK

78

PICK OF THE HERD FLUSH

Pick of the cowherd embryo transplant flush. The winning bidder can select from any cow in the herd over 2 years of age. Our semen inventory is open for use or select your own (buyers responsibility). We can coordinate a time to do the ET work between mid May to early June with Dr. Galen Lusk of Western Genetics. Guarantee of 6 embryos with an open top. This lot needs to be chosen within a month after our sale date.



LOT 79

10 UNITS OF VE CUT R ECLIPSE 32J

79

DOB. 3/10/21 • ASA#. 3986784 • Tattoo. 32J

MFI CENTER CUT 2291
VE-EDP CUT RIGHT 362E
 GOLDEN DAWN MS STROLLER

O C C TOTAL 616T
 MFI BLACK LOLITA 9037
 SIM-ROC STROLLER
 362U

KCC SAGINAW 6W
VE SAG ELIPSE 431B
 JBD ELLY 231S

DCC NEW LOOK 101
 KCC 26J
 3C PICASSO F955 BZ
 VE 9288 ANGUS

CE	BW	WW	YW	MCE	Milk	DOC	YG	Marb	REA	API
12.6	0.9	66.2	99.0	7.5	15.4	9.5	-0.18	0.09	0.46	103.8

10 units of semen from VE Cut R Eclipse 32J, ASA #3986784. Stored at Hoffman AI Breeders in Logan Utah.



LOT 80

10 UNITS OF OCC ZAMIR 412Z

80

DOB. 9/17/12 • AAA#. 17771569 • Tattoo. 412Z

O C C EMBLAZON 854E
O C C JET STREAM 825J
 O C C JUANADA 968G

D H D TRAVELER 6807
 DIXIE ERICA OF C H 1019
 O C C EUREKA 865E
 O C C JUANADA 774A

D D A FAHREN 21X
O C C JUANADA 826R
 O C C JUANADA 968G

FAHREN OF WYE UMF 5830
 D D A MELISA 549
 O C C EUREKA 865E
 O C C JUANADA 774A

CED	BW	WW	YW	CEM	Milk	DOC	CW	Marb	RE	\$C
12	-1.4	17	36	4	24	23	4	.05	.28	161

10 units of semen from OCC Zamir 412Z, AAA #17771569. Stored at Hoffman AI Breeders in Logan Utah.



LOT 81

10 UNITS OF VE MEYER FORTE 330F

81

DOB. 3/25/18 • AAA#. 19511944 • Tattoo. 330F

PAPA OPTIMA 9818
PAPA FORTE 1921
 PAPA ENVIOUS BLACKBIRD 8832

SCOTCH CAP
 BLACKBIRD D H D 2816
 PAPA RITO T POWER D H D 6838
 ENVIOUS BLACKBIRD OF RR 7066

SOO LINE MOTIVE 9016
MEYER ROSETTA 213Z
 FCC ROSETTA 824U

HF KODIAK 5R
 TLA BEAUTY 5R
 O C C NECTAR 702N
 FCC ROSETTA 895S

CED	BW	WW	YW	CEM	Milk	DOC	CW	Marb	RE	\$C
12	-1.6	25	49	2	30	-6	7	.29	.57	184

10 units of semen from VE Meyer Forte 330F, AAA #19511944. Stored at Hoffman AI Breeders in Logan Utah.



LOT 82

10 UNITS OF VE JUNEAU ROSTER 1J

82

DOB. 2/12/21 • AAA#. 20264938 • Tattoo. 1J

O C C EMBLAZON 854E
O C C JUNEAU 807J
 O C C DIXIE ERICA 903E

D H D TRAVELER 6807
 DIXIE ERICA OF C H 1019
 O C C CANDOR 763C
 O C C DIXIE ERICA 799B

SOO LINE MOTIVE 9016
MEYER ROSETTA 213Z
 FCC ROSETTA 824U

HF KODIAK 5R
 TLA BEAUTY 5R
 O C C NECTAR 702N
 FCC ROSETTA 895S

CED	BW	WW	YW	CEM	Milk	DOC	CW	Marb	RE	\$C
0	1.0	66	112	-10	26	28	33	-.24	.82	190

10 units of semen from VE Juneau Roster 1J, AAA #20264938. Stored at Hoffman AI Breeders in Logan Utah.

10 UNITS OF S/M HALFBACK H081

83

DOB. 2/20/20 • ASA#. 3731433 • Tattoo. H081

S/M DIESEL D141
IPU RADIUM 20A
S/M FRANCESCA B141

S/M ROSE ANN F081
PHS BANK ROLL 345B
S/M RACHEL D061

CROSSROAD RADIUM 789U
IPU MS. LAREDO 107Y
ANCHOR T LEGEND 7H
S/M FRANCESCA Z121
SIBELLE DIRTY HARRY 25Z
PHS YUMA
ANCHOR T LEGEND 7H
S/M RENA B041

CE	BW	WW	YW	MCE	Milk	DOC	YG	Marb	REA	API
14.9	0.5	69.7	101.6	7.8	34.1	11.0	-0.55	-0.06	0.85	124.6

10 units of semen from S/M Halfback H081, ASA #3731433. Stored at Hoffman AI Breeders in Logan Utah.



DRAFT HORSE TEAMS

TEAM DRAFT HORSE TEAM

84

Ben and Dan are 3 year old Belgian geldings. They stand 17 hands tall. They have been used to feed cattle. They have been driven down the road with light traffic. Good dispositions and easy to be around. Consigned by Clint Hallam (307) 747-4802.



TEAM DRAFT HORSE TEAM

85

2 year old gelding and mare about 16 hands. Started with feed sleigh and driving well. By Wering Shire stallion and out of Black Clydesdale mares from Terry Johnson. 45 days of driving. Consigned by Jack Clark (208) 569-9140.



THE BULLS IN THIS SALE OFFERING QUALIFY FOR SUPERIOR PROGRESSIVE GENETICS



Superior Progressive Genetics (SPG) is a value-added program by Superior Livestock Auction that helps market cattle with top-tier genetics. This program highlights qualifying lots by displaying the seedstock producer's logo on-screen during Superior Livestock Video Auctions. These lots are also labeled as SPG in Superior Livestock Auction's print and online sale catalogs.



By purchasing bulls from this offering, you can showcase your cattle's superior genetics and earn a proven value-added premium—at no extra cost—through Superior Livestock Auction.

For more information or to connect with a Superior representative in your area, call (800) 422-2117 or visit www.SuperiorLivestock.com.



LEARN MORE

SHOWCASE YOUR BREEDING DECISIONS

& RECIEVE A VALUE-ADDED PREMIUM AT NO EXTRA COST



Our DNA sample results were delayed but will be available hopefully by sale day. We have identified in the footnotes, the lots that were tested for color, polled, and GGP 100K. This will include genomic enhanced EPD's to increase their accuracy.



Homegrown Financial Planning

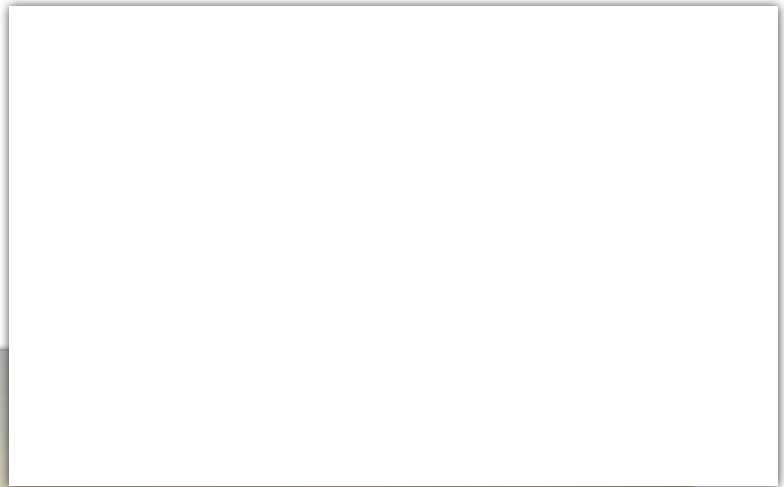


Paulette Treguboff
Managing Partner
(623) 295-1920

Beaux Treguboff
Managing Partner
(623) 295-1960



Vertical Edge Genetics
2055 Ivins Road
Bancroft, Idaho 83217



**ANNUAL PRODUCTION SALE / FRIDAY, MARCH 28, 2025
1:00 PM / AT THE RANCH NEAR BANCROFT, IDAHO**

*OFFERING OVER 100 HEAD / 68 REGISTERED YEARLING BULLS
[Negative BVD-PI Tested, Performance Tested, Fertility Tested and PAP Tested]*

*3 REGISTERED 100% FULLBLOOD FLECKVIEH HEIFERS,
25 COMMERCIAL YEARLING HEIFERS [SIRE IDENTIFIED]
2 DRAFT HORSE TEAMS*