



23RD ANNUAL
Production Sale
FEBRUARY 12, 2025

LUNCH AT NOON | SALE AT 1PM
AT THE DOUBLE M SALE BARN • STANFIELD, OR

Your Maternal Power



23RD ANNUAL Production Sale FEBRUARY 12, 2025

Sale Details

LUNCH @ NOON | SALE @ 1PM
AT THE DOUBLE M SALE BARN • STANFIELD, OR



Auctioneer:
C.D. "Butch" Booker
Mobile: (509) 989-2855



Bid live online LiveAuctions.tv

LIVESTOCK PUBLICATION REPRESENTATIVES:

Jared Patterson, <i>Western Livestock Journal</i>	(208) 312-2386
Rod Wesselman, <i>Wesselman Livestock</i>	(509) 765-9219
Quannah Gardiner, <i>Angus Journal</i>	(620) 635-0294
Jake Pickering, <i>Western Ag Reporter</i>	(530) 415-5484

SALE DAY PHONES:

(541) 379-0632 - Cell, Devin Correa
(541) 449-3558 - Home, Richard Correa
(541) 377-0114 - Cell, Garrett Correa
(541) 379-4243 - Cell, Gage Correa

SALE LOCATION:

Double M Sale Facility
30256 Stanfield Meadows Rd., Stanfield, OR 97875.

Directions: Take Exit 182 off of Interstate 84. Turn North, then take the first right onto Stanfield Meadows Rd. Second driveway on the right.

ABSENTEE BIDDER INFORMATION:

Buyers that cannot attend the sale may call Meadow Acres Angus Ranch and leave a bid for the lot they wish to purchase. If buyer is not satisfied 100% with the purchase, you won't own it. This is a guarantee to any buyer.

TERMS & CONDITIONS OF SALE:

All cattle will sell under the suggested Terms and Conditions of the American Angus Association (http://www.angus.org/Pub/suggested_sale_terms.pdf). Supplemental sheets to the sale will take precedence over information listed in the sale book.

LOT NUMBERS:

Lot numbers on animals selling will correspond with the sale book.

DELIVERY OF SALE CATTLE:

Free delivery on sale cattle up to 300 miles (bulls only, females delivered at cost). Anything over will be done at cost. All cattle will be delivered at the buyer's risk within a reasonable length of time after the sale. Pick cattle up sale day and receive a \$50 credit.

FEED ARRANGEMENTS:

Free feed until March 1. Then feeding will be charged to buyer at normal rate.

MARKETING OPTION - CALF BUY BACK PROGRAM:

Contact: Devin Correa (541) 379-0632

BREEDING INFORMATION:

We guarantee that all breeding cattle sold by Meadow Acres Angus Ranch, both bulls and females, are fertile to the best of our knowledge. If a bull is injured at any time in the first year breeding season so as to make him functionally infertile, we will provide you with a satisfactory replacement (if available), or issue you a credit equal to the bull's purchase price minus the salvage value received for that bull. If a female is determined to be a non-breeder, then we would ask you to sell her and would offer you the difference of her purchase price minus the salvage value as credit in any future Meadow Acres Angus Ranch sale. All credit is good to use at next year's sale. We would simply ask you to contact us before you cull your infertile animal.

This is not a life insurance policy, however. We will not replace a dead animal if it is killed or dies for any reason. We would suggest that normal care still needs to be exercised toward these animals and that particularly the yearling bulls not be allowed to get thin.

HERD HEALTH:

Meadow Acres has tested BVD free. All females born at Meadow Acres Angus Ranch have been brucellosis vaccinated. Cattle offered for sale have been vaccinated with 3 rounds of 8 Way, Multimin, Enforce3, Bovishield Gold 5 and Ivomec Pour On. Clean Up II at ultrasounding. All bulls are vaccinated with Vibrio-Lepto and Pour On at semen check.

REVENUE SHARING:

Meadow Acres Angus Ranch will be retaining one-third semen interest in every bull selling. Buyer will have full possession and salvage value of the bull.

ACCOMMODATIONS:

Best Western, Hermiston (541) 564-0202
Oxford Suites, Hermiston (541) 564-8000
Comfort Inn & Suites, Hermiston (541) 564-5991
Holiday Inn Express (541) 585-5656

LUNCH:

A complimentary steak lunch will be served on sale day starting at noon. Coffee and donuts will be available in the morning.

SALE OFFERING:

Cattle may be viewed at the ranch any time prior to the sale.

LIABILITY:

All persons who attend this sale do so at their own risk, legal or otherwise. Meadow Acres Angus Ranch and their staff assume no liability for property loss or accidents that may occur.

Shaded EPD boxes are values ranking in the top 25%.

ANGUSMEDIA EPDs contained in the hard copy of this sale book were current as of print date. Digital versions of this sale book can be viewed online at www.angus.org and will have EPDs updated every Friday with the exception of EPD references in footnotes and photos. Any PDF downloads from the website will contain EPDs current as of the date downloaded. References: American Angus Association®, AHIR®, AngusLink™, CAB®, Pathfinder®.

Welcome to the Sale

Dear Cattlemen and Cattlewomen,

We would like to personally welcome you to our 23rd Annual Maternal Power Production sale here at Meadow Acres Angus Ranch. We enjoy being able to be a valuable part of your operation's success and look forward to being a partner with you heading into the future. We are proud to be family owned and operated (3 generations) and do business the old-fashioned way with a handshake.

This year's offering will consist of 85 fall bulls that we feel are the best we've offered for public auction. We are excited for each of you to study and analyze them. All bulls have once again been BVD tested, ultra-sounded, groomed, Angus GS tested (which includes parentage), semen tested, and freeze branded for easy identification for you, the valued customer. For the second year in a row, we are offering two open registered heifers from the heart of the replacement heifers. They have also been BVD tested, groomed, and Angus GS tested. These are two heifers that you can start a herd with.

We are proud of the offering this year and from top to bottom this is a great set of bulls to select from. The bulls have had no creep feed or hoof trimming. We are highly focused on feet and legs, if bulls can't travel, they can't breed. We are, and have been, committed to creating cattle that are balanced and stay the course for maternal, moderate, and structural soundness. Our emphasis is high on maternal, as the mother cow is the backbone of our operation. Great cows make great bulls.

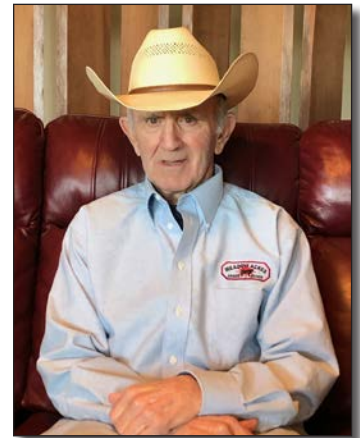
Cow herds evolve over many years, not overnight. As you study this sale catalog, you will see a program that has been built on balanced genetics that will stand the test of time. We have been using embryo transfer since 2004 and have many $\frac{3}{4}$ and $\frac{1}{2}$ sisters in the herd. This has added consistency amongst the herd. Flush cows here are meticulously hand picked from the herd to ensure only the most elite genetics are propagated.

The bulls always look much better in person, but if you are unable to attend the sale, it will be broadcasted on Liveauctions TV and videos will be available to view prior to the sale. Follow us on Facebook for the latest updates, pictures, and videos. We look forward to seeing you on February 12th, 2025, for our 23rd annual production sale. If there is anything you need or have any questions, please contact us day or night.

The Correas



Garrett, Melanie, Devin and Gage Correa



Richard Correa

Meadow Acres Angus Ranch • 32581 Correa Lane • Echo, Oregon 97826

Richard Correa (541) 449-3558 • Devin Correa (541) 379-0632 Cell • meadowacresangus@msn.com • www.meadowacresangus.com



Meadow Acres Donors



Meadow Acres Blackbird 719

Meadow Acres Blackbird 719

Birth Date: 09-02-2016 | Cow *18968472 | Tattoo: 719

Donor

#Cole Creek Black Cedar 46P
 #*Cole Creek Cedar Ridge TV
 16134394 #Cole Creek Clovanada 49S
 #Connealy Thunder
 #Meadow Acres Blackbird 3112
 17675279 Meadow Acres Blackbird 0218

SM	+95
\$W	+62
\$F	+43
\$G	+42
\$B	+85
\$C	+205

CED	BW	WW	YW	RADG	DMI	YH	SC	DOC	CLAW	ANGLE	PAP	HS
+14	-.7	+44	+71	+14	+66	+0	+91	+20	+34	+47	+81	+13
HP	CEM	MILK	MW	MH	SEN	CW	MARB	RE	FAT			
+18.1	+7	+37	+1	-.3	+8	+14	+62	-.04	+0.31			



Meadow Acres Blackcap 210

Meadow Acres Blackcap 210

Birth Date: 12-06-2011 | Cow 17421835 | Tattoo: 210

Donor

#*Connealy Onward
 #*Sitz Wisdom 481T
 15636992 Sitz Elluna Elite 94P
 #Bon View New Design 878
 Meadow Acres Blackcap 36
 14666382 Leachman Blackcap 5032

SM	+67
\$W	+67
\$F	+104
\$G	+43
\$B	+147
\$C	+258

CED	BW	WW	YW	RADG	DMI	YH	SC	DOC	CLAW	ANGLE	PAP	HS
-2	+5.4	+70	+118	+23	+1.23	+1.2	+1.31	+11	+52	+44	+51	+58
HP	CEM	MILK	MW	MH	SEN	CW	MARB	RE	FAT			
+14.6	+5	+40	+58	+6	-22	+59	+46	+62	+0.22			



Meadow Acres Blackcap 968

Meadow Acres Blackcap 968

Birth Date: 09-11-2018 | Cow 19599188 | Tattoo: 968

Donor

+Rito 707 of Ideal 3407 7075
 #+*S A V Resource 1441
 17016597 *S A V Blackcap May 4136
 #*Mytty In Focus
 +Meadow Acres Blackcap 1121
 17102274 Meadow Acres Blackcap 36

SM	+72
\$W	+61
\$F	+95
\$G	+28
\$B	+123
\$C	+232

CED	BW	WW	YW	RADG	DMI	YH	SC	DOC	CLAW	ANGLE	PAP	HS
+3	+3.4	+79	+140	+24	+2.00	+9	+1.02	+30	+40	+45	+97	+61
HP	CEM	MILK	MW	MH	SEN	CW	MARB	RE	FAT			
+15.7	+7	+21	+95	+7	-30	+58	+0.07	+88	+0.16			



Meadow Acres Blackbird 3112

Meadow Acres Blackbird 3112

Birth Date: 11-01-2012 | Cow #17675279 | Tattoo: 3112

Donor

#Baldridge Kaboom K243 KCF
 #Connealy Thunder
 15148659 #Parka of Conanga 241
 #B A R Ext Traveler 205
 Meadow Acres Blackbird 0218
 14258136 V N A R Blackbird 16D 224J

SM	+90
\$W	+61
\$F	+65
\$G	+42
\$B	+106
\$C	+227

CED	BW	WW	YW	RADG	DMI	YH	SC	DOC	CLAW	ANGLE	PAP	HS
+8	+9	+51	+83	+18	+74	+2	+56	+15	+36	+42	+37	+33
HP	CEM	MILK	MW	MH	SEN	CW	MARB	RE	FAT			
+16.9	+11	+32	+18	+1	+2	+27	+54	+19	+0.15			



Meadow Acres Formera 8202

Meadow Acres Formera 8202

Birth Date: 11-30-2017 | Cow +*19314072 | Tattoo: 8202

Donor

#+*Coleman Charlo 0256
 #+*Coleman Charlo 3212
 17783509 +*Coleman Donna 714
 #*Cole Creek Cedar Ridge 1V
 +*Meadow Acres Formera 4169
 18011869 +Fink Formera 9375 7223 NPV

SM	+66
\$W	+66
\$F	+86
\$G	+62
\$B	+148
\$C	+258

CED	BW	WW	YW	RADG	DMI	YH	SC	DOC	CLAW	ANGLE	PAP	HS
+6	+1.7	+70	+125	+27	+1.19	+3	+68	+23	+42	+44	+3.35	+53
HP	CEM	MILK	MW	MH	SEN	CW	MARB	RE	FAT			
+15.7	+6	+28	+87	+5	-30	+47	+91	+41	+0.23			

Meadow Acres Donors

Meadow Acres Pride 810

Birth Date: 09-09-2017 | Cow *19314075 | Tattoo: 810

Donor

##*Coleman Charlo 0256
 #+*Coleman Charlo 3212
 17783509 +*Coleman Donna 714
 #Connealy Thunder
 *Meadow Acres Pride 4156
 18009555 +Meadow Acres Rita 787

\$M	+95
\$W	+50
\$F	+51
\$G	+30
\$B	+82
\$C	+201



Meadow Acres Pride 810

CED	BW	WW	YW	RADG	DMI	YH	SC	DOC	CLAW	ANGLE	PAP	HS
+9	+4	+45	+81	+21	+26	-8	-38	+11	+28	+37	+3.96	+55
HP	CEM	MILK	MW	MH	SEN	CW	MARB	RE	FAT			
+18.0	+2	+22	-12	-8	+19	+8	+36	+06	+035			

Meadow Acres Miss 8222

Birth Date: 09-18-2017 | Cow +*19299574 | Tattoo: 8222

Donor

+Rito 707 of Ideal 3407 7075
 #+*S A V Renown 3439
 17633839 *S A V Blackcap May 4136
 ##*Cole Creek Cedar Ridge 1V
 +*Fink Miss 3408 0756 CR
 17805748 +Fink Miss 0756 2110 NW

\$M	+70
\$W	+73
\$F	+93
\$G	+33
\$B	+126
\$C	+233



Meadow Acres Miss 8222

CED	BW	WW	YW	RADG	DMI	YH	SC	DOC	CLAW	ANGLE	PAP	HS
+2	+1.8	+69	+123	+25	+1.48	+3	+39	+21	+38	+48	-1.15	+68
HP	CEM	MILK	MW	MH	SEN	CW	MARB	RE	FAT			
+16.4	+6	+37	+77	+3	-30	+48	+34	+59	+072			

Meadow Acres Lass 665

Birth Date: 09-16-2015 | Cow 18646453 | Tattoo: 665

Donor

##*Sitz Upward 307R
 #*Sitz Dash 10277
 15656868 +Sitz Everelda Entense 2665
 #Connealy Thunder
 Meadow Acres Lass 4131
 18009540 +Meadow Acres Rita 632

\$M	+65
\$W	+56
\$F	+92
\$G	+56
\$B	+148
\$C	+257



Meadow Acres Lass 665

CED	BW	WW	YW	RADG	DMI	YH	SC	DOC	CLAW	ANGLE	PAP	HS
+9	-7	+51	+95	+26	+45	+0	+32	+24	+44	+47	+1.51	+47
HP	CEM	MILK	MW	MH	SEN	CW	MARB	RE	FAT			
+13.5	+8	+31	+49	+2	-12	+36	+88	+29	+069			

Meadow Acres 0235

Birth Date: 09-20-2019 | Cow +*19945443 | Tattoo: 0235

Donor

##*Connealy Onward
 #*Sitz Wisdom 481T
 15636992 Sitz Elluna Elite 94P
 ##*Cole Creek Cedar Ridge 1V
 +*Fink Miss 5380 1314 CR
 18507393 +Fink Miss 1314 5523 EXT

\$M	+82
\$W	+56
\$F	+78
\$G	+43
\$B	+121
\$C	+239



Meadow Acres 0235

CED	BW	WW	YW	RADG	DMI	YH	SC	DOC	CLAW	ANGLE	PAP	HS
+11	+1	+50	+97	+27	+53	+2	+1.23	+14	+43	+40	+62	+27
HP	CEM	MILK	MW	MH	SEN	CW	MARB	RE	FAT			
+14.1	+7	+28	+13	-2	+7	+32	+47	+39	-014			

Meadow Acres Erica 2248 7200

Birth Date: 09-12-2016 | Cow #+*18968511 | Tattoo: 7200

Donor

##*Boyd New Day 8005
 #+GDAR Game Day 449
 14691231 #G D A R Miss Wix 474
 #Nichols Extra K205
 +*Fink Erica 2248 9380 K205
 17540665 +Fink Erica 9380 3463 5522

\$M	+74
\$W	+73
\$F	+80
\$G	+51
\$B	+130
\$C	+243



Meadow Acres Erica 2248 7200

CED	BW	WW	YW	RADG	DMI	YH	SC	DOC	CLAW	ANGLE	PAP	HS
+4	+1.2	+57	+98	+20	+1.12	+3	+97	+11	+50	+53	+2.81	+62
HP	CEM	MILK	MW	MH	SEN	CW	MARB	RE	FAT			
+14.5	+0	+40	+19	-2	-3	+39	+71	+38	+037			

Reference Sires

Coleman Bravo 6313

Birth Date: 07-04-2016 | Bull #*18734838 | Tattoo: 6313

#*O C C Paxton 730P
#+*Coleman Charlo 0256
 16879074 +Bohi Abigale 6014
 #*Connealy Onward
+*Coleman Donna 714
 15706882 +*Coleman Donna 386

+O C C Focus 813F
 O C C Blackbird 736K
 #Sitz Traveler 8180
 S A V Abigale 6062
 #Connealy Lead On
 Altune of Conanga 6104
 #Basin Rainmaker 654X
 +KMK Donna J311

SM	+102
SW	+71
SF	+83
SG	+20
SB	+103
SC	+236

CED	BW	WW	YW	RADG	DMI	YH	SC	DOC	CLAW	ANGLE	PAP	HS
+14	-1	+52	+98	+19	+1.49	-4	+82	+32	+26	+38	+1.02	+30
HP	CEM	MILK	MW	MH	\$EN	CW	MARB	RE	FAT			
+11.2	+11	+23	-18	-7	+19	+40	+08	+36	+046			



Coleman Bravo 6313

Basin Rainmaker 4404

Birth Date: 03-19-2014 | Bull #*17913751 | Tattoo: 4404

#Basin Rainmaker P175
Basin Rainmaker 2704
 17280032 #Basin Erica 7520 BV
 #+*Basin Payweight 1075
+*Basin Joy 1036
 16935098 Basin Joy 566T

#Basin Rainmaker 747L
 Basin Blackcap Lady 693L
 #Basin Franchise P142
 Basin Erica 8R02 BV
 #Vermilion Payweight J847
 +Basin Lucy 3829
 #*B P F Special Focus 504
 Basin Joy 204R

SM	+81
SW	+67
SF	+88
SG	+49
SB	+137
SC	+259

CED	BW	WW	YW	RADG	DMI	YH	SC	DOC	CLAW	ANGLE	PAP	HS
+6	+1.4	+60	+108	+23	+1.17	+1	+67	+24	+33	+34	+1.54	+31
HP	CEM	MILK	MW	MH	\$EN	CW	MARB	RE	FAT			
+14.7	+12	+32	+54	+1	-16	+40	+59	+53	+010			



Basin Rainmaker 4404

Sitz Barricade 632F

Birth Date: 02-01-2018 | Bull #*19078148 | Tattoo: 632F

#*Mohnen Substantial 272
#*Sitz Stellar 726D
 18397542 *SITZ Pride 200B
 *Sitz Superior 10971
+*Sitz Barbaramere Nell 765D
 18689015 Sitz Barbaramere Nell 73T

#Benfield Substance 8506
 Mohnen Glyn Mawr Elba 1758
 #*Connealy Final Product
 #+*Sitz Pride 308Y
 #+GDAR Game Day 449
 +*Sitz RLS Eisa Evergreen 5279
 #Sitz New Design 458N
 Sitz Barbaramere Nell 109R

SM	+66
SW	+57
SF	+117
SG	+44
SB	+161
SC	+275

CED	BW	WW	YW	RADG	DMI	YH	SC	DOC	CLAW	ANGLE	PAP	HS
-1	+4.2	+85	+143	+25	+1.88	+4	+83	+17	+32	+39	-1.48	+10
HP	CEM	MILK	MW	MH	\$EN	CW	MARB	RE	FAT			
+16.1	+5	+14	+99	+6	-28	+75	+61	+45	+081			



Sitz Barricade 632F

Mohnen Substantial 272

Birth Date: 01-03-2012 | Bull #*17292558 | Tattoo: 272

#+H A Image Maker 0415
#*Benfield Substance 8506
 16207085 Benfield Edella 1105
 #LT Territory 5824 of EA
Mohnen Glyn Mawr Elba 1758
 16396059 Mohnen Glyn Mawr Elba 1345

#Hero 6267 of R R 2418
 H A Rito Blackcap 9038
 Jauer Java 8136
 Benfield Edella 7813
 #Sitz Tradition RLS 8702
 +EA Lucy 141
 #+Baldridge Mullen M528
 Mohnen Glyn Mawr Elba 721

SM	+66
SW	+61
SF	+81
SG	+28
SB	+109
SC	+207

CED	BW	WW	YW	RADG	DMI	YH	SC	DOC	CLAW	ANGLE	PAP	HS
+12	-1.8	+61	+107	+23	+1.11	+0	+1.26	+22	+43	+45	-.03	+12
HP	CEM	MILK	MW	MH	\$EN	CW	MARB	RE	FAT			
+12.7	+7	+18	+54	+2	-7	+33	+22	+46	+044			



Mohnen Substantial 272

Reference Sires

Coleman Banker 9215

Birth Date: 06-30-2019 | Bull +*19583404 | Tattoo: 9215

#+*Coleman Charlo 0256
 #+*Coleman Bravo 6313
 18734838 +*Coleman Donna 714
 #Connealy Thunder
 +*Coleman Donna 4203
 18105600 +*Coleman Donna 714

#*O C C Paxton 730P
 +Bohi Abigale 6014
 #*Connealy Onward
 +*Coleman Donna 386
 #Baldridge Kaboom K243 KCF
 #Parka of Conanga 241
 #*Connealy Onward
 +*Coleman Donna 386

SM	+105
\$W	+72
\$F	+96
\$G	+33
\$B	+129
\$C	+272

CED	BW	WW	YW	RADG	DMI	YH	SC	DOC	CLAW	ANGLE	PAP	HS
+16	-1.6	+58	+113	+26	+1.48	-3	+62	+31	+24	+40	-.05	+20
HP	CEM	MILK	MW	MH	\$EN	CW	MARB	RE	FAT			
+16.8	+13	+39	+25	-3	-5	+50	+34	+39	+037			



Coleman Banker 9215

Poss Rawhide

Birth Date: 02-11-2019 | Bull +*19416968 | Tattoo: 9513

#+*Basin Payweight 1682
 #*Poss Maverick
 18962396 Poss Pride 5163
 Poss Easy Impact 0119
 +*Poss Blueblood 6502
 18631711 Poss Blueblood 920

#+*Basin Payweight 0065
 21AR O Lass 7017
 +*Poss Hoover Dam 2509
 +Poss Pride 9526
 #Poss Total Impact 745
 Poss Elmaretta 736
 #*Connealy All Around
 Poss Blueblood Lady 5114

SM	+55
\$W	+84
\$F	+119
\$G	+64
\$B	+183
\$C	+292

CED	BW	WW	YW	RADG	DMI	YH	SC	DOC	CLAW	ANGLE	PAP	HS
+12	-.4	+80	+131	+30	+.50	+1	+1.13	+33	+.66	+.50	-1.73	+1.20
HP	CEM	MILK	MW	MH	\$EN	CW	MARB	RE	FAT			
+9.0	+10	+26	+92	+2	-31	+62	+.93	+.82	+066			



Poss Rawhide

Ellingson Rangeland

Birth Date: 02-24-2019 | Bull +*19590500 | Tattoo: 9144

Basin Rainmaker 2704
 #*Basin Rainmaker 4404
 17913751 +*Basin Joy 1036
 #*CTS Remedy 1T01
 #*EA Emblynette 7009
 19588454 EA Emblynette 5241

#Basin Rainmaker P175
 #Basin Erica 7520 BV
 #+*Basin Payweight 1075
 Basin Joy 566T
 #Connealy Thunder
 CTS 7V03 Belleme Maid 9T02
 #*Koupal Advance 28
 EA Emblynette 3249

SM	+81
\$W	+69
\$F	+109
\$G	+51
\$B	+159
\$C	+287

CED	BW	WW	YW	RADG	DMI	YH	SC	DOC	CLAW	ANGLE	PAP	HS
+6	+.9	+69	+120	+25	+1.40	+3	+93	+20	+.41	+.31	-1.24	+21
HP	CEM	MILK	MW	MH	\$EN	CW	MARB	RE	FAT			
+18.5	+15	+26	+81	+6	-26	+61	+.61	+.77	+037			



Ellingson Rangeland

Sitz Resilient 10208

Birth Date: 02-15-2018 | Bull +*19057457 | Tattoo: 10208

#*Mohen Substantial 272
 #*Sitz Stellar 726D
 18397542 *SITZ Pride 2008
 #*Sitz Top Game 561X
 #*Sitz Miss Burgess 1856
 18395931 Sitz Miss Burgess 4381

#*Benfield Substance 8506
 Mohen Glyn Mawr Elba 1758
 #*Connealy Final Product
 #+*Sitz Pride 308Y
 #+GDAR Game Day 449
 #Sitz Pride 88T
 Sitz Rainmaker 10899
 Sitz Miss Burgess 1609

SM	+90
\$W	+89
\$F	+79
\$G	+64
\$B	+143
\$C	+275

CED	BW	WW	YW	RADG	DMI	YH	SC	DOC	CLAW	ANGLE	PAP	HS
+5	+.7	+79	+137	+27	+1.53	+5	+1.14	+6	+.33	+.35	-1.65	+18
HP	CEM	MILK	MW	MH	\$EN	CW	MARB	RE	FAT			
+16.7	+7	+24	+56	+4	-12	+43	+.94	+.55	+032			



Sitz Resilient 10208

Barricade Sons



Lot 1



Lot 2

1 Meadow Acres Barricade 4217

Birth Date: 09-17-2023 | Bull +*21132296 | Tattoo: 4217

*Sitz Stellar 726D
 *Sitz Barricade 632F
 19078148
 +*SITZ Barbaramere Nell 765D
 ANGUS 88
 #+0 C C Great Plains 943G
 #+*Coleman Donna 5207
 18410196
 +*Coleman Donna 714



*Mohnen Substantial 272
 *SITZ Pride 2008
 *Sitz Superior 10971
 Sitz Barbaramere Nell 73T
 #*N Bar Emulation EXT
 Dixie Erica of C H 1019
 #*Connealy Onward
 +*Coleman Donna 386

BW	99
Adj. 205	763
Wt. 12/27/24	1640
SC	40
Adj. %IMF	2.80
Adj. RE	13.0
Dam's NR	6-108

CED	BW	WW	YW	RADG	DMI	YH	SC	DOC	CLAW	ANGLE	PAP	HS	HP	CEM	MILK
+3	+3.1	+79	+125	+19	+1.58	+5	+69	+13	+26	+42	-32	+39	+15.1	+1	+25
75%	85%	20%	40%	95%	80%	55%	65%	80%	1%	25%	20%	30%	25%	95%	55%
MW	MH	\$EN	CW	MARB	RE	FAT	\$M	\$W	\$F	\$G	\$B	\$C			
+65	+3	-17	+57	+11	+52	+040	+82	+75	+86	+24	+110	+225			
60%	65%	50%	45%	95%	70%	75%	15%	20%	65%	95%	95%	80%			



Coleman Donna 5207 - Dam of Lots 1 and 2

2 Meadow Acres Barricade 4215

Birth Date: 10-03-2023 | Bull +21132298 | Tattoo: 4215

*Sitz Stellar 726D
 *Sitz Barricade 632F
 19078148
 +*SITZ Barbaramere Nell 765D
 #+0 C C Great Plains 943G
 #+*Coleman Donna 5207
 18410196
 +*Coleman Donna 714



*Mohnen Substantial 272
 *SITZ Pride 2008
 *Sitz Superior 10971
 Sitz Barbaramere Nell 73T
 #*N Bar Emulation EXT
 Dixie Erica of C H 1019
 #*Connealy Onward
 +*Coleman Donna 386

BW	99
Adj. 205	697
Wt. 12/27/24	1585
SC	41
Adj. %IMF	3.37
Adj. RE	14.2
Dam's NR	6-108

CED	BW	WW	YW	RADG	DMI	YH	SC	DOC	CLAW	ANGLE	PAP	HS	HP	CEM	MILK
I+7	I+1.6	I+64	I+108	I+19	I+1.38	I+2	I+.57	I+18	I+.32	I+.42	I-21	I+.24	I+13.8	I+8	I+22
45%	60%	60%	70%	95%	65%	85%	75%	60%	4%	25%	25%	75%	35%	55%	80%
MW	MH	\$EN	CW	MARB	RE	FAT	\$M	\$W	\$F	\$G	\$B	\$C			
I+47	I+1	-6	+54	+33	+60	+018	+80	+61	+87	+37	+124	+241			
80%	80%	25%	50%	90%	60%	50%	15%	55%	60%	85%	85%	70%			



\$M	+66
\$W	+57
\$F	+117
\$G	+44
\$B	+161
\$C	+275

CED	BW	WW	YW	RADG	DMI	YH	SC	DOC	CLAW	ANGLE	
-1	+4.2	+85	+143	+25	+1.88	+4	+83	+17	+32	+39	
PAP	HS	HP	CEM	MILK	MW	MH	\$EN	CW	MARB	RE	FAT
-1.48	+10	+16.1	+5	+14	+99	+6	-28	+75	+61	+45	+081

Rangeland Sons

6 Meadow Acres Rangeland 494



Ellingson Rangeland

SM	+81
\$W	+69
SF	+109
\$G	+51
\$B	+159
\$C	+287

CED	BW	WW	YW	RADG	DMI	YH	SC	DOC	CLAW	ANGLE		
+6	+9	+69	+120	+25	+1.40	+3	+93	+20	+41	+31		
PAP	HS	HP	CEM	MILK	MW	MH	\$EN	CW	MARB	RE	FAT	
-1.24	+21	+18.5	+15	+26	+81	+6	-26	+61	+61	+77	+0.37	

3 Meadow Acres Rangeland 414

Birth Date: 09-13-2023 | Bull #21132165 | Tattoo: 414

#*Basin Rainmaker 4404 Basin Rainmaker 2704
 *Ellingson Rangeland +*Basin Joy 1036
 19590500 *EA Emblynette 7009 #*CTS Remedy 1T01
ANGUS EA Emblynette 5241
 #*Raven Powerball 53 #+*PA Power Tool 9108
 *Meadow Acres Perfection 237 +*Raven Emma E 4241
 20530041 Meadow Acres Perfection 073 +*S A V Rainfall 6846
 Meadow Acres Perfection 478

BW	60
Adj. 205	335
Wt. 12/27/24	1200
SC	39
Adj. %IMF	
Adj. RE	
Dam's NR	1-74

CED	BW	WW	YW	RADG	DMI	YH	SC	DOC	CLAW	ANGLE	PAP	HS	HP	CEM	MILK
+13	-1.6	+60	+104	+21	+1.17	+1	+84	+20	+39	+46	+2.01	+53	+14.7	+15	+28
10%	10%	70%	75%	90%	50%	90%	55%	50%	75%	45%	70%	55%	30%	3%	35%
MW	MH	\$EN	CW	MARB	RE	FAT	\$M	\$W	\$F	\$G	\$B	\$C			
+54	+3	-13	+48	+29	+64	+0.22	+76	+66	+91	+35	+126	+239			
70%	65%	40%	65%	90%	55%	55%	25%	40%	55%	90%	80%	70%			

4 Meadow Acres Rangeland 420

Birth Date: 08-21-2023 | Bull #21132167 | Tattoo: 420

#*Basin Rainmaker 4404 Basin Rainmaker 2704
 *Ellingson Rangeland +*Basin Joy 1036
 19590500 *EA Emblynette 7009 #*CTS Remedy 1T01
ANGUS EA Emblynette 5241
 *S AV Territory 7225 #+*S AV Resource 1441
 Meadow Acres Rita 2155 *S AV Emblynette 3293
 20528045 Meadow Acres Rita 622 *Connealy Observer 372
 +Meadow Acres Rita 2113

BW	75
Adj. 205	331
Wt. 12/27/24	1240
SC	41
Adj. %IMF	
Adj. RE	
Dam's NR	1-73

CED	BW	WW	YW	RADG	DMI	YH	SC	DOC	CLAW	ANGLE	PAP	HS	HP	CEM	MILK
+3	+3.5	+78	+128	+21	+1.83	+3	+1.31	+10	+45	+34	-1.45	+18	+16.4	+4	+30
75%	90%	20%	35%	90%	90%	80%	25%	90%	35%	4%	10%	70%	75%	85%	25%
MW	MH	\$EN	CW	MARB	RE	FAT	\$M	\$W	\$F	\$G	\$B	\$C			
+74	+3	-24	+50	+42	+61	+0.21	+76	+74	+79	+41	+120	+232			
45%	65%	70%	60%	80%	60%	55%	25%	20%	75%	75%	85%	75%			

5 Meadow Acres Rangeland 461

Birth Date: 10-16-2023 | Bull 21132196 | Tattoo: 461

#*Basin Rainmaker 4404 Basin Rainmaker 2704
 *Ellingson Rangeland +*Basin Joy 1036
 19590500 *EA Emblynette 7009 #*CTS Remedy 1T01
ANGUS EA Emblynette 5241
 #*Cole Creek Cedar Ridge 1V #Cole Creek Black Cedar 46P
 +Meadow Acres Rita 8115 8223 #Cole Creek Clovada 49S
 19300271 +Meadow Acres Rita 8115 #S AV 8180 Traveler 004
 O&M Rita 9116 of 6054

BW	75
Adj. 205	502
Wt. 12/27/24	1260
SC	40
Adj. %IMF	3.77
Adj. RE	14.8
Dam's NR	3-104

CED	BW	WW	YW	RADG	DMI	YH	SC	DOC	CLAW	ANGLE	PAP	HS	HP	CEM	MILK
+7	+0	+61	+106	+20	+1.42	+2	+37	+23	+38	+29	-.84	+51	+17.6	+13	+31
45%	25%	70%	70%	90%	65%	85%	85%	35%	75%	7%	15%	55%	10%	10%	20%
MW	MH	\$EN	CW	MARB	RE	FAT	\$M	\$W	\$F	\$G	\$B	\$C			
+56	+1	-16	+45	+39	+64	+0.29	+88	+67	+79	+39	+119	+242			
70%	80%	50%	75%	85%	55%	65%	10%	35%	75%	80%	90%	70%			

Birth Date: 11-18-2023 | Bull 21132203 | Tattoo: 494

#*Basin Rainmaker 4404 Basin Rainmaker 2704
 *Ellingson Rangeland +*Basin Joy 1036
 19590500 *EA Emblynette 7009 #*CTS Remedy 1T01
 EA Emblynette 5241
 #S AV Pioneer 7301 #*S AV Final Answer 0035
 Meadow Acres Rita 592 S AV Blackbird 5297
 18327703 +Meadow Acres Rita 949 #+B/R New Frontier 095
 O&M Rita 9116 of 6054

BW	92
Adj. 205	482
Wt. 12/27/24	1380
SC	37.5
Adj. %IMF	4.77
Adj. RE	16.0
Dam's NR	4-99

CED	BW	WW	YW	RADG	DMI	YH	SC	DOC	CLAW	ANGLE	PAP	HS	HP	CEM	MILK
-4	+4.9	+67	+118	+26	+1.86	+4	+87	+17	+43	+34	+1.30	+22	+15.1	+10	+21
95%	95%	50%	50%	55%	25%	70%	55%	65%	25%	4%	10%	10%	25%	30%	85%
MW	MH	\$EN	CW	MARB	RE	FAT	\$M	\$W	\$F	\$G	\$B	\$C			
+171	+5	-20	+58	+76	+87	+0.03	+64	+44	+97	+61	+159	+270			
50%	45%	60%	40%	45%	30%	35%	55%	90%	45%	35%	40%	40%			



Lot 7

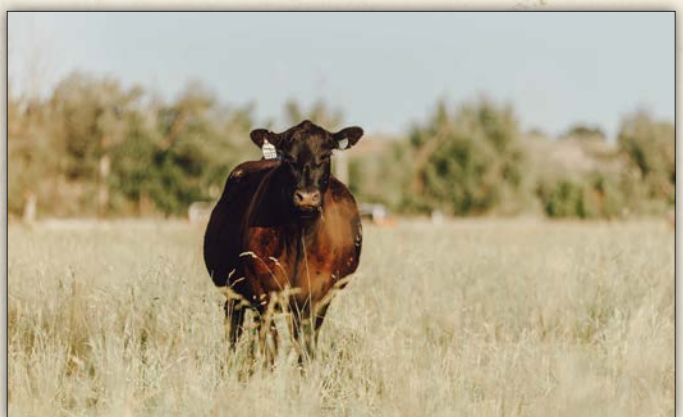
7 Meadow Acres Rangeland 4212

Birth Date: 09-23-2023 | Bull #21132193 | Tattoo: 4212

#*Basin Rainmaker 4404 Basin Rainmaker 2704
 *Ellingson Rangeland +*Basin Joy 1036
 19590500 *EA Emblynette 7009 #*CTS Remedy 1T01
ANGUS EA Emblynette 5241
 #+*Coleman Charlo 3212 #+*Coleman Charlo 0256
 *Meadow Acres Pride 810 +*Coleman Donna 714
 19314075 *Meadow Acres Pride 4156 #Connealy Thunder
 +Meadow Acres Rita 787

BW	102
Adj. 205	736
Wt. 12/27/24	1470
SC	39
Adj. %IMF	3.27
Adj. RE	13.6
Dam's NR	

CED	BW	WW	YW	RADG	DMI	YH	SC	DOC	CLAW	ANGLE	PAP	HS	HP	CEM	MILK
+12	-.7	+61	+109	+25	+66	+2	+1.04	+13	+36	+38	+1.03	+32	+17.6	+10	+32
10%	15%	70%	65%	60%	75%	85%	40%	80%	10%	10%	50%	20%	10%	30%	75%
MW	MH	\$EN	CW	MARB	RE	FAT	\$M	\$W	\$F	\$G	\$B	\$C			
+37	+1	-7	+42	+43	+40	+0.41	+91	+71	+89	+37	+126	+254			
85%	80%	25%	80%	80%	85%	75%	4%	30%	60%	85%	80%	55%			



Rangeland and Resilient Sons



Lot 8

8 Meadow Acres Rangeland 4213

Birth Date: 09-17-2023 | Bull #*21135269 | Tattoo: 4213

#*Basin Rainmaker 4404
 *Ellingson Rangeland
 19590500
 *EA Emblynette 7009
ANGUS
 #+*S A V Renown 3439
 +*Meadow Acres Miss 8222
 19299574
 +*Fink Miss 3408 0756 CR

Basin Rainmaker 2704
 +*Basin Joy 1036
 #*CTS Remedy 1101
 EA Emblynette 5241
 +Rito 707 of Ideal 3407 7075
 *S A V Blackcap May 4136
 #*Cole Creek Cedar Ridge 1V
 +Fink Miss 0756 2110 NW

BW	90
Adj. 205	695
Wt. 12/27/24	1565
SC	42
Adj. %IMF	3.21
Adj. RE	15.1
Dam's NR	1-87

CED	BW	WW	YW	RADG	DMI	YH	SC	DOC	CLAW	ANGLE	PAP	HS	HP	CEM	MILK
+3	+2.0	+72	+132	+28	+1.80	+1	+41	+17	+4.8	+4.6	-.93	+4.2	+15.9	+8	+33
75%	70%	35%	30%	35%	90%	90%	80%	65%	45%	45%	15%	35%	20%	55%	10%
MW	MH	SEN	CW	MARB	RE	FAT	\$M	\$W	\$F	\$B	\$C				
+80	+2	-29	+61	+4.6	+6.1	+0.84	+67	+71	+105	+38	+143	+252			
40%	75%	80%	35%	80%	60%	95%	45%	30%	30%	85%	60%	60%			



Lot 9

9 Meadow Acres Rangeland 4220

Birth Date: 09-17-2023 | Bull #*21132191 | Tattoo: 4220

#*Basin Rainmaker 4404
 *Ellingson Rangeland
 19590500
 *EA Emblynette 7009
ANGUS
 #+*Coleman Charlo 3212
 *Meadow Acres Pride 810
 19314075
 *Meadow Acres Pride 4156

Basin Rainmaker 2704
 +*Basin Joy 1036
 #*CTS Remedy 1101
 EA Emblynette 5241
 #+*Coleman Charlo 0256
 +*Coleman Donna 714
 #Connealy Thunder
 +Meadow Acres Rita 787

BW	81
Adj. 205	751
Wt. 12/27/24	1550
SC	41
Adj. %IMF	3.42
Adj. RE	15.0
Dam's NR	

CED	BW	WW	YW	RADG	DMI	YH	SC	DOC	CLAW	ANGLE	PAP	HS	HP	CEM	MILK
+16	-1.8	+66	+118	+25	+1.19	+2	+50	+13	+3.9	+3.5	+2.13	+2.6	+18.1	+13	+33
2%	5%	55%	50%	60%	50%	85%	75%	80%	75%	5%	75%	75%	10%	10%	10%
MW	MH	SEN	CW	MARB	RE	FAT	\$M	\$W	\$F	\$B	\$C				
+57	+4	-18	+51	+3.1	+6.4	-.001	+87	+75	+90	+37	+128	+253			
70%	55%	55%	60%	90%	55%	30%	10%	20%	55%	85%	80%	60%			



SM	+90
\$W	+89
\$F	+79
\$G	+64
\$B	+143
\$C	+275

10 Meadow Acres Resilient 444

Birth Date: 09-05-2023 | Bull #*21130370 | Tattoo: 444

#*Sitz Stellar 7260
 *Sitz Resilient 10208
 19057457
 *Sitz Miss Burgess 1856
ANGUS
 #+*Coleman Bravo 6313
 Meadow Acres Winnette 1123
 20217447
 Meadow Acres Winnette 840

#*Mohnen Substantial 272
 *SITZ Pride 2008
 #*Sitz Top Game 561X
 Sitz Miss Burgess 4381
 #+*Coleman Charlo 0256
 +*Coleman Donna 714
 #*Connealy Black Granite
 Meadow Acres Winnette 470

BW	75
Adj. 205	481
Wt. 12/27/24	1460
SC	42
Adj. %IMF	3.59
Adj. RE	12.8
Dam's NR	2-102

CED	BW	WW	YW	RADG	DMI	YH	SC	DOC	CLAW	ANGLE	PAP	HS	HP	CEM	MILK
+10	+9	+90	+150	+26	+2.11	+5	+1.54	+13	+2.8	+4.7	-2.03	+1.5	+14.1	+9	+19
25%	45%	5%	10%	55%	95%	55%	75%	80%	2%	50%	3%	10%	35%	40%	90%
MW	MH	SEN	CW	MARB	RE	FAT	\$M	\$W	\$F	\$B	\$C				
+59	+3	-11	+59	+2.8	+2.3	-.095	+93	+86	+93	+24	+117	+245			
65%	65%	35%	40%	90%	95%	95%	3%	4%	50%	95%	90%	65%			

11 Meadow Acres Resilient 448

Birth Date: 09-05-2023 | Bull #*21130360 | Tattoo: 448

#*Sitz Stellar 7260
 *Sitz Resilient 10208
 19057457
 *Sitz Miss Burgess 1856
ANGUS
 #+*Coleman Bravo 6313
 +*Meadow Acres Rita 285 1242
 20217624
 #*Meadow Acres Rita 8115 285

#*Mohnen Substantial 272
 *SITZ Pride 2008
 #*Sitz Top Game 561X
 Sitz Miss Burgess 4381
 #+*Coleman Charlo 0256
 +*Coleman Donna 714
 #S A V Pioneer 7301
 +Meadow Acres Rita 8115

BW	85
Adj. 205	507
Wt. 12/27/24	1450
SC	40
Adj. %IMF	2.49
Adj. RE	13.9
Dam's NR	2-107

CED	BW	WW	YW	RADG	DMI	YH	SC	DOC	CLAW	ANGLE	PAP	HS	HP	CEM	MILK
+4	+2.1	+82	+134	+23	+1.69	+4	+5.7	+17	+3.7	+3.4	+0.9	+2.8	+16.5	+6	+34
70%	70%	75%	25%	75%	85%	70%	75%	65%	10%	4%	30%	15%	70%	70%	10%
MW	MH	SEN	CW	MARB	RE	FAT	\$M	\$W	\$F	\$B	\$C				
+39	+0	-9	+60	+7.0	+8.1	-.027	+105	+92	+91	+56	+148	+297			
85%	90%	30%	35%	55%	35%	60%	1%	1%	55%	45%	55%	20%			

12 Meadow Acres Resilient 454

Birth Date: 09-05-2023 | Bull 21130429 | Tattoo: 454

#*Sitz Stellar 7260
 *Sitz Resilient 10208
 19057457
 *Sitz Miss Burgess 1856
ANGUS
 #Connealy Thunder
 Meadow Acres Rita 274 835
 19299529
 Meadow Acres Rita 274

#*Mohnen Substantial 272
 *SITZ Pride 2008
 #*Sitz Top Game 561X
 Sitz Miss Burgess 4381
 #Baldrige Kaboom K243 KCF
 #Parka of Conanga 241
 #*S A V Final Answer 0035
 08m Rita 9116 of 6054

BW	78
Adj. 205	414
Wt. 12/27/24	1380
SC	41
Adj. %IMF	3.69
Adj. RE	12.6
Dam's NR	5-100

CED	BW	WW	YW	RADG	DMI	YH	SC	DOC	CLAW	ANGLE	PAP	HS	HP	CEM	MILK
+2	+6	+75	+115	+19	+7.3	+3	+1.19	+4	+4.5	+3.4	-.51	+3.6	+17.7	+3	+21
85%	35%	30%	55%	95%	20%	80%	30%	95%	35%	4%	20%	30%	10%	90%	85%
MW	MH	SEN	CW	MARB	RE	FAT	\$M	\$W	\$F	\$B	\$C				
+21	+1	+7	+35	+8.6	+4.8	-.044	+100	+81	+67	+59	+126	+263			
95%	80%	10%	90%	35%	75%	80%	1%	10%	95%	40%	80%	50%			

Resilient Sons

13 Meadow Acres Resilient 4114

Birth Date: 11-28-2023 | Bull 21134426 | Tattoo: 4114

#*Sitz Stellar 726D
 *Sitz Resilient 10208
 19057457
ANGUS
 #+*PA Full Power 1208
 Meadow Acres Rita 2104 869
 19299533
 +Meadow Acres Rita 2104

#*Mohnen Substantial 272
 *SITZ Pride 2008
 #*Sitz Top Game 561X
 Sitz Miss Burgess 4381
 #+*PA Power Tool 9108
 *Pine View SQR Rita W091
 #+O C C Emblazon 854E
 O&m Rita 9116 of 6054

BW	82
Adj. 205	562
Wt. 12/27/24	1360
SC	40
Adj. %IMF	3.12
Adj. RE	14.2
Dam's NR	4-102

CED	BW	WW	YW	RADG	DMI	YH	SC	DOC	CLAW	ANGLE	PAP	HS	HP	CEM	MILK
+7	-3	+73	+123	+23	+1.03	+2	+55	+15	+48	+41	+21	+19	+14.6	+4	+27
45%	20%	35%	40%	75%	40%	85%	75%	70%	45%	20%	30%	70%	30%	85%	40%
MW	MH	SEN	CW	MARB	RE	FAT	\$M	\$W	\$F	\$G	\$B	\$C			
+28	+0	+0	+32	+59	+31	+0.03	+92	+82	+59	+47	+106	+229			
95%	90%	15%	95%	65%	90%	35%	4%	10%	95%	65%	95%	80%			



Lot 16

16 Meadow Acres Resilient 4216

Birth Date: 09-21-2023 | Bull +*21135435 | Tattoo: 4216

#*Sitz Stellar 726D
 *Sitz Resilient 10208
 19057457
ANGUS
 #+*S A V Renown 3439
 +*Meadow Acres Miss 8222
 19299574
 +*Fink Miss 3408 0756 CR



#*Mohnen Substantial 272
 *SITZ Pride 2008
 #*Sitz Top Game 561X
 Sitz Miss Burgess 4381
 +Rito 707 of Ideal 3407 7075
 *S A V Blackcap May 4136
 #*Cole Creek Cedar Ridge 1V
 +Fink Miss 0756 2110 NW

BW	95
Adj. 205	683
Wt. 12/27/24	1620
SC	43
Adj. %IMF	3.42
Adj. RE	14.3
Dam's NR	1-87

CED	BW	WW	YW	RADG	DMI	YH	SC	DOC	CLAW	ANGLE	PAP	HS	HP	CEM	MILK
+1	+3.0	+84	+155	+32	+2.33	+8	+64	+18	+38	+37	-2.84	+5.7	+20.5	+7	+36
90%	85%	10%	10%	75%	95%	25%	70%	60%	75%	70%	1%	65%	7%	65%	4%
MW	MH	SEN	CW	MARB	RE	FAT	\$M	\$W	\$F	\$G	\$B	\$C			
+89	+7	-35	+67	+90	+5.8	+0.62	+88	+80	+100	+60	+161	+297			
30%	30%	90%	25%	35%	65%	90%	10%	10%	35%	40%	40%	20%			



Lot 14

14 Meadow Acres Resilient 4211

Birth Date: 09-15-2023 | Bull +*21130410 | Tattoo: 4211

#*Sitz Stellar 726D
 *Sitz Resilient 10208
 19057457
ANGUS
 #+*S A V Resource 1441
 +*Meadow Acres Erica 9230
 19599178
 +*Fink Erica 2248 9380 K205



#*Mohnen Substantial 272
 *SITZ Pride 2008
 #*Sitz Top Game 561X
 Sitz Miss Burgess 4381
 +Rito 707 of Ideal 3407 7075
 *S A V Blackcap May 4136
 #Nichols Extra K205
 +Fink Erica 9380 3463 5522

BW	88
Adj. 205	688
Wt. 12/27/24	1520
SC	43
Adj. %IMF	2.50
Adj. RE	13.7
Dam's NR	1-114

CED	BW	WW	YW	RADG	DMI	YH	SC	DOC	CLAW	ANGLE	PAP	HS	HP	CEM	MILK
+9	+4	+71	+126	+23	+1.81	+2	+85	+8	+50	+40	-2.31	+26	+15.3	+2	+25
30%	30%	40%	40%	75%	90%	85%	55%	95%	55%	20%	3%	75%	25%	95%	55%
MW	MH	SEN	CW	MARB	RE	FAT	\$M	\$W	\$F	\$G	\$B	\$C			
+66	+0	-18	+30	+58	+48	+0.28	+67	+70	+59	+46	+106	+204			
55%	90%	55%	95%	65%	75%	65%	45%	30%	95%	65%	95%	95%			



Lot 17

15 Meadow Acres Resilient 4214

Birth Date: 09-22-2023 | Bull +*21135436 | Tattoo: 4214

#*Sitz Stellar 726D
 *Sitz Resilient 10208
 19057457
ANGUS
 #+*S A V Renown 3439
 +*Meadow Acres Miss 8222
 19299574
 +*Fink Miss 3408 0756 CR



#*Mohnen Substantial 272
 *SITZ Pride 2008
 #*Sitz Top Game 561X
 Sitz Miss Burgess 4381
 +Rito 707 of Ideal 3407 7075
 *S A V Blackcap May 4136
 #*Cole Creek Cedar Ridge 1V
 +Fink Miss 0756 2110 NW

BW	95
Adj. 205	780
Wt. 12/27/24	1485
SC	45
Adj. %IMF	2.91
Adj. RE	14.2
Dam's NR	1-87

CED	BW	WW	YW	RADG	DMI	YH	SC	DOC	CLAW	ANGLE	PAP	HS	HP	CEM	MILK
+3	+1.0	+74	+127	+23	+1.81	+6	+64	+18	+33	+39	-1.69	+58	+15.8	+4	+36
75%	45%	30%	35%	75%	90%	45%	70%	60%	5%	75%	5%	65%	20%	85%	4%
MW	MH	SEN	CW	MARB	RE	FAT	\$M	\$W	\$F	\$G	\$B	\$C			
+83	+5	-32	+47	+58	+40	+0.40	+72	+79	+73	+45	+117	+224			
35%	45%	85%	70%	65%	85%	75%	30%	15%	85%	70%	90%	80%			

17 Meadow Acres Resilient 4218

Birth Date: 09-15-2023 | Bull +*21141860 | Tattoo: 4218

#*Sitz Stellar 726D
 *Sitz Resilient 10208
 19057457
ANGUS
 #+*Coleman Charlo 3212
 *Meadow Acres Pride 810
 19314075
 *Meadow Acres Pride 4156



#*Mohnen Substantial 272
 *SITZ Pride 2008
 #*Sitz Top Game 561X
 Sitz Miss Burgess 4381
 #+*Coleman Charlo 0256
 +*Coleman Donna 714
 #Connealy Thunder
 +Meadow Acres Rita 787

BW	89
Adj. 205	759
Wt. 12/27/24	1520
SC	40
Adj. %IMF	2.37
Adj. RE	15.2
Dam's NR	

CED	BW	WW	YW	RADG	DMI	YH	SC	DOC	CLAW	ANGLE	PAP	HS	HP	CEM	MILK
+6	+1.0	+78	+130	+24	+1.23	+0	+15	+9	+28	+23	+99	+28	+16.5	+8	+25
55%	45%	20%	30%	70%	55%	95%	90%	90%	2%	7%	45%	75%	15%	55%	55%
MW	MH	SEN	CW	MARB	RE	FAT	\$M	\$W	\$F	\$G	\$B	\$C			
+64	+1	-17	+46	+59	+51	+0.41	+92	+79	+81	+46	+127	+257			
60%	80%	50%	70%	65%	75%	75%	4%	15%	75%	65%	80%	55%			

Resilient and Prolific Sons



Lot 18



Lot 19

18 Meadow Acres Resilient 4219

Birth Date: 09-19-2023 | Bull +*21130407 | Tattoo: 4219

#*Sitz Stellar 726D
 #*Sitz Resilient 10208
 19057457
 #*Sitz Miss Burgess 1856
ANGUS
 #+*S A V Resource 1441
 +*Meadow Acres Erica 9230
 19599178
 +*Fink Erica 2248 9380 K205



#*Mohnen Substantial 272
 #*SITZ Pride 200B
 #*Sitz Top Game 561X
 #*Sitz Miss Burgess 4381
 +Rito 707 of Ideal 3407 7075
 #*S A V Blackcap May 4136
 #Nichols Extra K205
 +Fink Erica 9380 3463 5522

BW	95
Adj. 205	739
Wt. 12/27/24	1660
SC	43
Adj. %IMF	4.29
Adj. RE	14.7
Dam's NR	1-114

CED	BW	WW	YW	RADG	DMI	YH	SC	DOC	CLAW	ANGLE	PAP	HS	HP	CEM	MILK
+2	+2.6	+91	+159	+30	+2.26	+5	+1.80	+25	+33	+36	-3.82	+19	+17.8	+5	+27
85%	80%	4%	4%	25%	95%	55%	10%	25%	5%	10%	1%	10%	10%	80%	40%
MW	MH	SEN	CW	MARB	RE	FAT	SM	SW	SF	SG	SB	SC			
+95	+4	-33	+54	+79	+85	+0.05	+89	+83	+81	+62	+143	+274			
25%	55%	85%	50%	45%	30%	35%	5%	10%	75%	35%	60%	40%			

19 Meadow Acres Prolific 427

Birth Date: 10-07-2023 | Bull *21132240 | Tattoo: 427

*Ellingson Profound 8155
 #EA Queen 8070
ANGUS
 +*ZWT Summitt 6507
 Meadow Acres Rita 1128
 20215515
 Meadow Acres Rita 34

#*S Powerpoint WS 5503
 #+*EA Rosetta 6157
 #Koupal Juneau 797
 EA Queen 2350
 #+*S A V Renown 3439
 +*Coleman Donna 714
 #+GDAR Game Day 449
 Meadow Acres Rita 152

BW	75
Adj. 205	491
Wt. 12/27/24	1380
SC	40
Adj. %IMF	4.46
Adj. RE	14.1
Dam's NR	2-104

CED	BW	WW	YW	RADG	DMI	YH	SC	DOC	CLAW	ANGLE	PAP	HS	HP	CEM	MILK
-4	+3.9	+86	+144	+27	+1.63	+8	+98	+12	+35	+38	+1.86	+81	+17.3	+6	+18
95%	95%	10%	15%	45%	80%	25%	45%	85%	10%	10%	65%	95%	10%	70%	95%
MW	MH	SEN	CW	MARB	RE	FAT	SM	SW	SF	SG	SB	SC			
+72	+5	-16	+85	+86	+1.11	+0.09	+83	+69	+133	+69	+202	+345			
50%	45%	50%	3%	35%	10%	40%	10%	30%	3%	25%	10%	4%			

Ellingson Prolific



SM	+108
SW	+63
SF	+123
SG	+54
SB	+178
SC	+339

CED	BW	WW	YW	RADG	DMI	YH	SC	DOC	CLAW	ANGLE	PAP	HS	HP	CEM	MILK
+1	+4.0	+86	+142	+23	+1.96	+6	+50	+14	+17	+22	+1.99	+69	+19.0	+12	+14
+1.99	+6.9	+19.0	+12	+14	+56	+4	-6	+78	+70	+61	+019				

20 Meadow Acres Prolific 428

Birth Date: 09-05-2023 | Bull *21132241 | Tattoo: 428

*Ellingson Profound 8155
 #EA Queen 8070
ANGUS
 #+*PA Full Power 1208
 Meadow Acres Rita 151
 20209723
 Meadow Acres Rita 5125 83

#*S Powerpoint WS 5503
 #+*EA Rosetta 6157
 #Koupal Juneau 797
 EA Queen 2350
 #+*PA Power Tool 9108
 *Pine V/SQR Rita W091
 #+*Coleman Charlo 3212
 Meadow Acres Rita 8115 5125

BW	72
Adj. 205	544
Wt. 12/27/24	1450
SC	42
Adj. %IMF	2.62
Adj. RE	14.6
Dam's NR	2-107

CED	BW	WW	YW	RADG	DMI	YH	SC	DOC	CLAW	ANGLE	PAP	HS	HP	CEM	MILK
+8	+6	+80	+132	+25	+1.12	+4	+97	+13	+38	+36	+1.91	+24	+19.8	+8	+31
35%	35%	20%	30%	60%	45%	70%	45%	80%	15%	10%	70%	15%	2%	55%	20%
MW	MH	SEN	CW	MARB	RE	FAT	SM	SW	SF	SG	SB	SC			
+47	+1	-11	+68	+54	+97	+076	+105	+88	+112	+47	+159	+311			
80%	80%	35%	20%	70%	20%	95%	1%	3%	20%	65%	40%	15%			





Rawhide Sons

Poss Rawhide



SM	+55
SW	+84
SF	+119
SG	+64
SB	+183
SC	+292

CED	BW	WW	YW	RADG	DMI	YH	SC	DOC	CLAW	ANGLE	
+12	-.4	+80	+131	+30	+50	+1	+1.13	+33	+66	+50	
PAP	HS	HP	CEM	MILK	MW	MH	SEN	CW	MARB	RE	FAT
-1.73	+1.20	+9.0	+10	+26	+92	+2	-31	+62	+93	+82	+066

28 Meadow Acres Rawhide 41

Birth Date: 08-11-2023 | Bull *21135962 | Tattoo: 41

+*Poss Rawhide
19416968
+*Poss Blueblood 6502
ANGUS 35
+*LD Capitalist 316
+*Meadow Acres Blackbird 2231
20528126 #Meadow Acres Blackbird 3112

+*Basin Payweight 1682
Poss Pride 5163
Poss Easy Impact 0119
Poss Blueblood 920
#*Connealy Capitalist 028
LD Dixie Erica 2053
#Connealy Thunder
Meadow Acres Blackbird 0218

BW	45
Adj. 205	390
Wt. 12/27/24	1320
SC	39
Adj. %IMF	
Adj. RE	
Dam's NR	

CED	BW	WW	YW	RADG	DMI	YH	SC	DOC	CLAW	ANGLE	PAP	HS	HP	CEM	MILK
+8	+4	+77	+117	+23	+43	+2	+25	+31	+59	+45	-1.32	+71	+9.7	+7	+35
35%	30%	25%	55%	75%	10%	85%	90%	5%	85%	40%	10%	85%	80%	65%	10%
MW	MH	SEN	CW	MARB	RE	FAT	\$M	SW	SF	\$G	\$B	\$C			
+66	+3	-23	+58	+70	+37	+058	+69	+89	+103	+49	+152	+266			
55%	65%	65%	40%	55%	85%	90%	40%	2%	30%	60%	50%	45%			

Twin to Lot 30.

29 Meadow Acres Rawhide 415

Birth Date: 08-18-2023 | Bull *21133274 | Tattoo: 415

+*Poss Rawhide
19416968
+*Poss Blueblood 6502
ANGUS 35
+*Coleman Bravo 6313
*Meadow Acres Blackcap 296
20528008 Meadow Acres Blackcap 968

+*Basin Payweight 1682
Poss Pride 5163
Poss Easy Impact 0119
Poss Blueblood 920
#*Coleman Charlo 0256
+*Coleman Donna 714
#*S A V Resource 1441
+Meadow Acres Blackcap 1121

BW	72
Adj. 205	387
Wt. 12/27/24	1300
SC	41
Adj. %IMF	
Adj. RE	
Dam's NR	1-85

CED	BW	WW	YW	RADG	DMI	YH	SC	DOC	CLAW	ANGLE	PAP	HS	HP	CEM	MILK
+11	-1.2	+63	+108	+21	+99	+1	+96	+31	+45	+36	-1.01	+73	+13.3	+12	+29
15%	10%	60%	70%	90%	35%	90%	45%	5%	35%	10%	10%	85%	45%	15%	30%
MW	MH	SEN	CW	MARB	RE	FAT	\$M	SW	SF	\$G	\$B	\$C			
+50	+0	-12	+51	+19	+24	+068	+82	+70	+94	+22	+116	+232			
75%	90%	40%	60%	95%	95%	15%	30%	50%	95%	90%	75%				

30 Meadow Acres Rawhide 418

Birth Date: 08-11-2023 | Bull *21128282 | Tattoo: 418

+*Poss Rawhide
19416968
ANGUS 35
+*LD Capitalist 316
+*Meadow Acres Blackbird 2231
20528126 #Meadow Acres Blackbird 3112

+*Basin Payweight 1682
Poss Pride 5163
Poss Easy Impact 0119
Poss Blueblood 920
#*Connealy Capitalist 028
LD Dixie Erica 2053
#Connealy Thunder
Meadow Acres Blackbird 0218

BW	50
Adj. 205	306
Wt. 12/27/24	1155
SC	39
Adj. %IMF	
Adj. RE	
Dam's NR	

CED	BW	WW	YW	RADG	DMI	YH	SC	DOC	CLAW	ANGLE	PAP	HS	HP	CEM	MILK		
+9	+0	+76	+117	+24	+51	+2	+27	+30	+27	+30	+59	+46	-1.49	+69	+9.7	+7	+35
30%	25%	25%	55%	70%	10%	85%	90%	10%	85%	45%	10%	80%	80%	65%	10%		
MW	MH	SEN	CW	MARB	RE	FAT	OS	\$M	SW	SF	\$G	\$B	\$C				
+68	+3	-24	+59	+71	+38	+059	+66	+88	+105	+49	+155	+267					
55%	65%	70%	40%	50%	85%	90%	45%	3%	30%	60%	45%	45%					

Twin to Lot 28.

31 Meadow Acres Rawhide 423

Birth Date: 09-09-2023 | Bull *21133286 | Tattoo: 423

+*Poss Rawhide
19416968
ANGUS 35
+*Coleman Bravo 6313
Meadow Acres Perfection 145
20217446 Meadow Acres Perfection 826

+*Basin Payweight 1682
Poss Pride 5163
Poss Easy Impact 0119
Poss Blueblood 920
#*Coleman Charlo 0256
+*Coleman Donna 714
#*PA Full Power 1208
Meadow Acres Perfection 657

BW	65
Adj. 205	442
Wt. 12/27/24	1425
SC	41
Adj. %IMF	3.98
Adj. RE	12.7
Dam's NR	2-87

CED	BW	WW	YW	RADG	DMI	YH	SC	DOC	CLAW	ANGLE	PAP	HS	HP	CEM	MILK
+10	+7	+71	+132	+31	+1.09	+9	+57	+36	+55	+45	-2.42	+72	+9.2	+10	+28
25%	40%	40%	30%	20%	40%	20%	75%	1%	75%	40%	2%	85%	85%	30%	35%
MW	MH	SEN	CW	MARB	RE	FAT	\$M	SW	SF	\$G	\$B	\$C			
+85	+8	-29	+60	+58	+46	+054	+57	+67	+112	+44	+156	+259			
35%	20%	80%	35%	65%	80%	85%	70%	35%	20%	70%	45%	50%			

32 Meadow Acres Rawhide 457

Birth Date: 09-06-2023 | Bull *21133285 | Tattoo: 457

+*Poss Rawhide
19416968
ANGUS 35
+*Coleman Bravo 6313
+*Meadow Acres Rita 285 1250
20217623 #Meadow Acres Rita 8115 285

+*Basin Payweight 1682
Poss Pride 5163
Poss Easy Impact 0119
Poss Blueblood 920
#*Coleman Charlo 0256
+*Coleman Donna 714
#S A V Pioneer 7301
+Meadow Acres Rita 8115

BW	65
Adj. 205	453
Wt. 12/27/24	1380
SC	43
Adj. %IMF	5.10
Adj. RE	13.0
Dam's NR	2-93

CED	BW	WW	YW	RADG	DMI	YH	SC	DOC	CLAW	ANGLE	PAP	HS	HP	CEM	MILK
+7	+3.6	+86	+142	+30	+77	+5	+1.30	+20	+51	+45	-.21	+77	+8.1	+9	+27
45%	95%	10%	15%	25%	20%	55%	25%	50%	60%	40%	25%	90%	90%	40%	40%
MW	MH	SEN	CW	MARB	RE	FAT	\$M	SW	SF	\$G	\$B	\$C			
+96	+5	-34	+71	+75	+1.01	+059	+55	+76	+124	+59	+182	+291			
25%	45%	90%	15%	50%	15%	90%	75%	15%	10%	40%	20%	25%			

Territory and Bravo Sons

S AV Territory 7225



SM	+58
\$W	+63
\$F	+107
\$G	+35
\$B	+142
\$C	+242

CED	BW	VW	YW	RADG	DMI	YH	SC	DOC	CLAW	ANGLE	
+3	+2.7	+79	+133	+25	+1.28	+4	+98	+27	+52	+50	
PAP	HS	HP	CEM	MILK	MW	MH	\$EN	CW	MARB	RE	FAT
-2.06	+52	+13.3	+3	+19	+92	+3	-27	+65	+28	+98	+066

Coleman Bravo 6313



SM	+102
\$W	+71
\$F	+83
\$G	+20
\$B	+103
\$C	+236

CED	BW	VW	YW	RADG	DMI	YH	SC	DOC	CLAW	ANGLE	
+14	-1	+52	+98	+19	+1.49	-4	+82	+32	+26	+38	
PAP	HS	HP	CEM	MILK	MW	MH	\$EN	CW	MARB	RE	FAT
+1.02	+30	+11.2	+11	+23	-18	-7	+19	+40	+08	+36	+046

35 Meadow Acres Bravo 411

Birth Date: 08-22-2023 | Bull *21128587 | Tattoo: 411

#+*Coleman Charlo 0256
#+*Coleman Bravo 6313
18734838
+*Coleman Donna 714
ANGUS
*Coleman Navigator 614
Meadow Acres Lass 278
20527999
Meadow Acres Lass 872

#*0 C Paxton 730P
+Bohi Abigale 6014
#*Connealy Onward
+*Coleman Donna 386
#Cole Creek Black Cedar 46P
+*Coleman Eriskay 291
#*Connealy Black Granite
Meadow Acres Lass 665

BW	50
Adj. 205	397
Wt. 12/27/24	1200
SC	41
Adj. %IMF	
Adj. RE	
Dam's NR	1-87

CED	BW	VW	YW	RADG	DMI	YH	SC	DOC	CLAW	ANGLE	PAP	HS	HP	CEM	MILK
+15	+1	+58	+104	+23	+1.00	+2	+81	+33	+33	+48	-1.37	+47	+19.4	+9	+27
3%	25%	75%	75%	35%	85%	55%	2%	5%	55%	10%	45%	3%	40%	40%	
MW	MH	\$EN	CW	MARB	RE	FAT	\$M	\$W	\$F	\$G	\$B	\$C			
+15	-2	+7	+47	+22	+50	+0.58	+110	+65	+92	+27	+119	+264			
95%	95%	10%	70%	95%	75%	90%	1%	45%	50%	95%	90%	50%			



Lot 33

33 Meadow Acres Territory 464

Birth Date: 11-11-2023 | Bull *21132166 | Tattoo: 464

#+*S AV Resource 1441
*S AV Territory 7225
18913034
*S AV Emblynette 3293
ANGUS
#Connealy Thunder
#Meadow Acres Blackbird 3112
17675279
Meadow Acres Blackbird 0218

+Rito 707 of Ideal 3407 7075
*S AV Blackcap May 4136
#+S AV 004 Density 4336
*S AV Emblynette 7411
#Baldrige Kaboom K243 KCF
#Parka of Conanga 241
#B A R Ext Traveler 205
V N A R Blackbird 16D 224J

BW	75
Adj. 205	445
Wt. 12/27/24	1400
SC	42
Adj. %IMF	2.55
Adj. RE	15.0
Dam's NR	8-104

CED	BW	VW	YW	RADG	DMI	YH	SC	DOC	CLAW	ANGLE	PAP	HS	HP	CEM	MILK
+3	+2.3	+76	+130	+25	+1.55	+8	+92	+12	+51	+53	-1.74	+66	+14.5	+9	+29
75%	75%	25%	30%	60%	75%	25%	50%	85%	80%	5%	80%	30%	40%	30%	
MW	MH	\$EN	CW	MARB	RE	FAT	\$M	\$W	\$F	\$G	\$B	\$C			
+88	+8	-31	+71	+50	+34	+0.70	+58	+71	+107	+38	+145	+246			
30%	20%	85%	15%	75%	90%	95%	70%	30%	25%	85%	60%	65%			



Lot 36

34 Meadow Acres Territory 497

Birth Date: 11-12-2023 | Bull 21132162 | Tattoo: 497

#+*S AV Resource 1441
*S AV Territory 7225
18913034
*S AV Emblynette 3293
*Coleman Navigator 614
Meadow Acres Miss Kaye 167
20217377
Meadow Acres Miss Kaye 876

+Rito 707 of Ideal 3407 7075
*S AV Blackcap May 4136
#+S AV 004 Density 4336
*S AV Emblynette 7411
#Cole Creek Black Cedar 46P
+*Coleman Eriskay 291
#*Koupal Advance 28
Meadow Acres Miss Kaye 6111

BW	72
Adj. 205	477
Wt. 12/27/24	1250
SC	41
Adj. %IMF	2.76
Adj. RE	16.0
Dam's NR	2-106

CED	BW	VW	YW	RADG	DMI	YH	SC	DOC	CLAW	ANGLE	PAP	HS	HP	CEM	MILK
+6	+1.3	+67	+112	+22	+1.93	+3	+1.02	+22	+44	+45	-1.35	+47	+14.2	+6	+21
55%	50%	50%	60%	80%	30%	80%	45%	40%	30%	40%	20%	45%	35%	70%	85%
MW	MH	\$EN	CW	MARB	RE	FAT	\$M	\$W	\$F	\$G	\$B	\$C			
+54	+2	-10	+43	+21	+88	+0.65	+74	+59	+81	+31	+111	+218			
70%	75%	35%	80%	95%	30%	95%	25%	60%	75%	95%	95%	85%			

36 Meadow Acres Bravo 422

Birth Date: 09-12-2023 | Bull *21128589 | Tattoo: 422

#+*Coleman Charlo 0256
#+*Coleman Bravo 6313
18734838
+*Coleman Donna 714
ANGUS
#+*S AV Resource 1441
+*Meadow Acres Rita 329 1240
20215518
+Meadow Acres Rita 329

#*0 C Paxton 730P
+Bohi Abigale 6014
#*Connealy Onward
+*Coleman Donna 386
+Rito 707 of Ideal 3407 7075
*S AV Blackcap May 4136
#Connealy Thunder
+Meadow Acres Rita 614

BW	85
Adj. 205	497
Wt. 12/27/24	1490
SC	39
Adj. %IMF	2.35
Adj. RE	14.1
Dam's NR	2-98

CED	BW	VW	YW	RADG	DMI	YH	SC	DOC	CLAW	ANGLE	PAP	HS	HP	CEM	MILK
+4	+2.6	+75	+136	+26	+2.02	+4	+77	+28	+24	+26	+21	+47	+10.6	+4	+19
70%	80%	30%	25%	55%	95%	70%	60%	15%	1%	1%	30%	45%	70%	85%	90%
MW	MH	\$EN	CW	MARB	RE	FAT	\$M	\$W	\$F	\$G	\$B	\$C			
+54	+3	-8	+67	-0.8	+1.03	+0.43	+86	+64	+111	+20	+131	+256			
70%	65%	30%	25%	95%	15%	80%	10%	45%	20%	95%	75%	55%			

Bravo, Substantial and Rock Sons

39 Meadow Acres Bravo 456 ^[MIF]

Birth Date: 08-28-2023 | Bull 21123183 | Tattoo: 456

#+*Coleman Charlo 0256 #*O C C Paxton 730P
 #+*Coleman Bravo 6313 +Bohi Abigale 6014
 18734838 +*Coleman Donna 714 #*Connealy Onward
ANGUS #*S AV Final Answer 0035 +*Coleman Donna 386
 #*S AV Final Answer 0035 #Sitz Traveler 8180
Meadow Acres Perfection 549 S A V Emulous 8145
 18327657 Meadow Acres Perfection 226 #Connealy Thunder
 Meadow Acres Perfection 764

BW	82
Adj. 205	456
Wt. 12/27/24	1375
SC	40
Adj. %IMF	2.40
Adj. RE	14.0
Dam's NR	6-98

CED	BW	WW	YW	RADG	DMI	YH	SC	DOC	CLAW	ANGLE	PAP	HS	HP	CEM	MILK
+10	+1.3	+63	+107	+21	+1.06	-1	+1.19	+32	+38	+51	+1.90	+39	+12.6	+11	+29
25%	50%	60%	70%	90%	40%	95%	30%	3%	15%	70%	70%	30%	50%	25%	30%
MW	MH	SEN	CW	MARB	RE	FAT	\$M	\$W	\$F	\$G	\$B	\$C			
+7	-4	+10	+35	+52	+39	+0.71	+102	+73	+72	+39	+111	+246			
95%	95%	5%	90%	70%	85%	95%	1%	25%	90%	80%	95%	65%			



Lot 37

37 Meadow Acres Bravo 431

Birth Date: 09-28-2023 | Bull *21128593 | Tattoo: 431

#+*Coleman Charlo 0256 #*O C C Paxton 730P
 #+*Coleman Bravo 6313 +Bohi Abigale 6014
 18734838 +*Coleman Donna 714 #*Connealy Onward
ANGUS #+*S AV Resource 1441 +*Coleman Donna 386
 #+*S AV Resource 1441 +Rito 707 of Ideal 3407 7075
 +*Meadow Acres Erica 9230 *S A V Blackcap May 4136
 19599178 +*Fink Erica 2248 9380 K205 #Nichols Extra K205
 +Fink Erica 9380 3463 5522

BW	75
Adj. 205	517
Wt. 12/27/24	1500
SC	42
Adj. %IMF	2.55
Adj. RE	12.7
Dam's NR	1-114

CED	BW	WW	YW	RADG	DMI	YH	SC	DOC	CLAW	ANGLE	PAP	HS	HP	CEM	MILK
+7	+1.2	+76	+133	+25	+1.71	+1	+1.30	+32	+28	+34	+1.90	+35	+15.8	-2	+20
45%	50%	25%	25%	60%	85%	90%	25%	3%	2%	4%	70%	25%	20%	95%	90%
MW	MH	SEN	CW	MARB	RE	FAT	\$M	\$W	\$F	\$G	\$B	\$C			
+68	+0	-16	+56	+36	+79	+0.51	+85	+69	+92	+38	+129	+252			
55%	90%	50%	45%	85%	40%	85%	10%	30%	50%	85%	80%	60%			



Lot 38

38 Meadow Acres Bravo 436

Birth Date: 09-11-2023 | Bull *21123184 | Tattoo: 436

#+*Coleman Charlo 0256 #*O C C Paxton 730P
 #+*Coleman Bravo 6313 +Bohi Abigale 6014
 18734838 +*Coleman Donna 714 #*Connealy Onward
ANGUS #+*S AV Renown 3439 +*Coleman Donna 386
 #+*S AV Renown 3439 +Rito 707 of Ideal 3407 7075
 *Meadow Acres Rita 076 *S A V Blackcap May 4136
 19918840 Meadow Acres Rita 989 7125 #*CTS Remedy 1T01
 Meadow Acres Rita 989

BW	85
Adj. 205	445
Wt. 12/27/24	1450
SC	42
Adj. %IMF	2.19
Adj. RE	12.9
Dam's NR	2-101

CED	BW	WW	YW	RADG	DMI	YH	SC	DOC	CLAW	ANGLE	PAP	HS	HP	CEM	MILK
+3	+9	+61	+115	+25	+1.71	+6	+1.05	+26	+36	+45	+62	+44	+17.5	+12	+21
75%	45%	70%	55%	60%	85%	45%	40%	20%	10%	40%	40%	10%	15%	85%	
MW	MH	SEN	CW	MARB	RE	FAT	\$M	\$W	\$F	\$G	\$B	\$C			
+35	+2	+0	+47	+49	+39	-0.01	+93	+57	+85	+43	+128	+259			
90%	75%	15%	70%	75%	85%	30%	3%	65%	65%	75%	80%	50%			

40 Meadow Acres Substantial 430 ^[OHF]

Birth Date: 09-26-2023 | Bull *21132223 | Tattoo: 430

#*Benfield Substance 8506 #+H A Image Maker 0415
 #*Mohnen Substantial 272 Benfield Edella 1105
 17292558 Mohnen Glyn Mawr Elba 1758 #LT Territory 5824 of EA
ANGUS #*Ellingson Homegrown 6035 #*CTS Remedy 1T01
 #*Ellingson Homegrown 6035 #*CTS Remedy 1T01
Meadow Acres Blackcap 023 *EA Blanche 4137
 19924115 Meadow Acres Blackcap 760 #*Sitz Wisdom 481T
 Meadow Acres Blackcap 396

BW	75
Adj. 205	490
Wt. 12/27/24	1435
SC	42
Adj. %IMF	2.45
Adj. RE	11.1
Dam's NR	2-111

CED	BW	WW	YW	RADG	DMI	YH	SC	DOC	CLAW	ANGLE	PAP	HS	HP	CEM	MILK
+7	+0	+74	+130	+26	+1.10	+1.0	+1.35	+21	+52	+49	+54	+27	+11.5	+11	+26
45%	25%	30%	30%	55%	45%	10%	25%	45%	65%	60%	35%	15%	65%	25%	50%
MW	MH	SEN	CW	MARB	RE	FAT	\$M	\$W	\$F	\$G	\$B	\$C			
+74	+1.0	-22	+68	+47	+73	+0.45	+64	+73	+117	+43	+160	+272			
45%	10%	65%	20%	75%	45%	80%	55%	25%	15%	75%	40%	40%			

41 Meadow Acres Rock 453

Birth Date: 10-10-2023 | Bull 21135963 | Tattoo: 453

#*O C C Juneau 807J #+O C C Emblazon 854E
 #*Coleman Rock 7200 O C C Dixie Erica 903E
 19107936 +*Coleman Donna 714 #*Connealy Onward
ANGUS #*CTS Remedy 1T01 +*Coleman Donna 386
 #*CTS Remedy 1T01 #Connealy Thunder
#Meadow Acres Rita 512 763 CTS 7V03 Belleme Maid 9T02
 18968482 +Meadow Acres Rita 512 5183 #*S AV Final Answer 0035
 +Meadow Acres Rita 512

BW	75
Adj. 205	565
Wt. 12/27/24	1320
SC	40
Adj. %IMF	
Adj. RE	
Dam's NR	4-110

CED	BW	WW	YW	RADG	DMI	YH	SC	DOC	CLAW	ANGLE	PAP	HS	HP	CEM	MILK
+10	-4	+66	+108	+22	+89	+5	+62	+16	+50	+52	-84	+51	+16.0	+6	+23
25%	20%	55%	70%	80%	30%	55%	70%	75%	15%	55%	20%	70%	70%		
MW	MH	SEN	CW	MARB	RE	FAT	\$M	\$W	\$F	\$G	\$B	\$C			
+55	+4	-11	+50	+26	+49	+0.16	+72	+67	+94	+32	+126	+235			
70%	55%	35%	60%	95%	75%	50%	30%	35%	50%	90%	80%	75%			



Capitalist and Cedar Grandsons

49 Meadow Acres Capitalist 462

Birth Date: 10-22-2023 | Bull *21134423 | Tattoo: 462

#+*LD Capitalist 316
 +*Meadow Acres Capitalist 2253
 20532495 #Meadow Acres Blackbird 3112
ANGUS
 #*Ellingson Homestead 6030
 *Meadow Acres Miss 1101
 20215342 +*Meadow Acres Miss 6185

#*Connealy Capitalist 028
 LD Dixie Erica 2053
 #Connealy Thunder
 Meadow Acres Blackbird 0218
 #*CTS Remedy 1101
 EA Erica 1082
 #*Cole Creek Cedar Ridge 1V
 +Fink Miss 0732 5523 NW

BW	72
Adj. 205	491
Wt. 12/27/24	1410
SC	42
Adj. %IMF	
Adj. RE	
Dam's NR	1-100

CED	BW	WW	YW	RADG	DMI	YH	SC	DOC	CLAW	ANGLE	PAP	HS	HP	CEM	MILK
+4	+2.0	+63	+114	+24	+1.50	+1	-.01	+20	+4.2	+4.2	+2.86	+.51	+12.6	+7	+30
70%	70%	60%	60%	70%	70%	90%	95%	50%	25%	85%	55%	50%	65%	25%	
MW	MH	\$EN	CW	MARB	RE	FAT	\$M	\$W	\$F	\$G	\$B	\$C			
+53	+0	-14	+54	+19	+57	+0.01	+70	+64	+91	+31	+122	+228			
75%	90%	45%	50%	95%	65%	30%	35%	45%	55%	95%	85%	80%			

50 Meadow Acres Capitalist 496

Birth Date: 10-17-2023 | Bull *21123178 | Tattoo: 496

#+*LD Capitalist 316
 +*Meadow Acres Capitalist 2253
 20532495 #Meadow Acres Blackbird 3112
ANGUS
 #*Connealy Guinness
 Meadow Acres Miss Emma 1150
 20209718 #Meadow Acres Miss Emma 3113

#*Connealy Capitalist 028
 LD Dixie Erica 2053
 #Connealy Thunder
 Meadow Acres Blackbird 0218
 #*Connealy Dublin 8223
 Panda of Conanga 3609
 #Connealy Thunder
 Meadow Acres Miss Emma 926

BW	75
Adj. 205	499
Wt. 12/27/24	1275
SC	40
Adj. %IMF	4.63
Adj. RE	13.7
Dam's NR	2-96

CED	BW	WW	YW	RADG	DMI	YH	SC	DOC	CLAW	ANGLE	PAP	HS	HP	CEM	MILK
+7	+1.3	+68	+112	+25	+7.0	+5	+.66	+16	+4.1	+4.9	+1.25	+.16	+15.4	+11	+32
45%	50%	50%	60%	60%	20%	55%	70%	70%	20%	60%	55%	70%	20%	25%	75%
MW	MH	\$EN	CW	MARB	RE	FAT	\$M	\$W	\$F	\$G	\$B	\$C			
+22	+4	+0	+54	+96	+46	+0.29	+96	+79	+99	+64	+163	+307			
95%	55%	15%	50%	30%	80%	65%	2%	15%	40%	30%	35%	75%			

51 Meadow Acres Capitalist 4103

Birth Date: 11-28-2023 | Bull *21123175 | Tattoo: 4103

#+*LD Capitalist 316
 +*Meadow Acres Capitalist 2253
 20532495 #Meadow Acres Blackbird 3112
ANGUS
 #*Coleman Bravo 6313
 Meadow Acres Rose 1145
 20217569 Meadow Acres Rose 4123

#*Connealy Capitalist 028
 LD Dixie Erica 2053
 #Connealy Thunder
 Meadow Acres Blackbird 0218
 #*Coleman Charlo 0256
 +*Coleman Donna 714
 #Connealy Thunder
 +Meadow Acres Rita 944

BW	80
Adj. 205	499
Wt. 12/27/24	1185
SC	39
Adj. %IMF	3.27
Adj. RE	13.5
Dam's NR	2-98

CED	BW	WW	YW	RADG	DMI	YH	SC	DOC	CLAW	ANGLE	PAP	HS	HP	CEM	MILK
+7	+2.3	+69	+115	+22	+1.38	+4	+1.20	+28	+2.2	+2.9	+1.44	+.28	+11.6	+8	+31
45%	75%	45%	55%	80%	65%	70%	30%	15%	1%	1%	60%	75%	60%	55%	20%
MW	MH	\$EN	CW	MARB	RE	FAT	\$M	\$W	\$F	\$G	\$B	\$C			
+24	+0	+0	+57	+49	+70	+0.63	+103	+76	+96	+42	+138	+282			
95%	90%	15%	45%	75%	50%	95%	1%	15%	45%	75%	65%	30%			

52 Meadow Acres Capitalist 4128

Birth Date: 12-16-2023 | Bull *21123168 | Tattoo: 4128

#+*LD Capitalist 316
 +*Meadow Acres Capitalist 2253
 20532495 #Meadow Acres Blackbird 3112
ANGUS
 #*Coleman Charlo 3212
 Meadow Acres Elluna 1104
 20217582 #Meadow Acres Elluna 387

#*Connealy Capitalist 028
 LD Dixie Erica 2053
 #Connealy Thunder
 Meadow Acres Blackbird 0218
 #*Coleman Charlo 0256
 +*Coleman Donna 714
 #*S A V Bismarck 5682
 +Meadow Acres Elluna 9101

BW	72
Adj. 205	424
Wt. 12/27/24	1190
SC	40
Adj. %IMF	3.08
Adj. RE	15.1
Dam's NR	1-91

CED	BW	WW	YW	RADG	DMI	YH	SC	DOC	CLAW	ANGLE	PAP	HS	HP	CEM	MILK
+5	+2.3	+67	+121	+27	+1.39	+4	+.59	+10	+3.8	+4.3	+2.28	+.48	+16.7	+9	+27
60%	75%	50%	45%	45%	65%	70%	70%	90%	75%	30%	75%	50%	75%	40%	40%
MW	MH	\$EN	CW	MARB	RE	FAT	\$M	\$W	\$F	\$G	\$B	\$C			
+62	+4	-17	+52	+78	+99	+0.44	+76	+63	+92	+61	+153	+274			
60%	55%	50%	55%	45%	20%	80%	25%	50%	50%	35%	50%	40%			

53 Meadow Acres Cedar 435

Birth Date: 10-23-2023 | Bull 21123185 | Tattoo: 435

#*Cole Creek Cedar Ridge 1V
 +*Meadow Acres Cedar 6204
 18661870 +*Fink Miss 1393 8379 NW
ANGUS
 #*Connealy Black Granite
 #Meadow Acres Rita 163 985
 19599147 Meadow Acres Rita 163 7118

#Cole Creek Black Cedar 46P
 #Cole Creek Clovanada 495
 #S A V Net Worth 4200
 Fink Miss 8379 6535 IF
 #*Connealy Consensus 7229
 #Eura Elga of Conanga 9109
 #*Sitz Wisdom 481T
 Meadow Acres Rita 163

BW	70
Adj. 205	523
Wt. 12/27/24	1475
SC	42
Adj. %IMF	2.20
Adj. RE	14.8
Dam's NR	4-109

CED	BW	WW	YW	RADG	DMI	YH	SC	DOC	CLAW	ANGLE	PAP	HS	HP	CEM	MILK
+15	-1.2	+65	+110	+23	+7.5	+4	+.58	+26	+4.4	+5.1	+8.0	+.38	+9.2	+11	+38
3%	70%	55%	65%	75%	20%	70%	75%	20%	30%	70%	45%	30%	85%	25%	2%
MW	MH	\$EN	CW	MARB	RE	FAT	\$M	\$W	\$F	\$G	\$B	\$C			
+52	+2	-18	+44	+35	+14	+0.32	+67	+79	+75	+31	+106	+204			
75%	75%	55%	75%	85%	95%	65%	45%	15%	85%	95%	95%	95%			

54 Meadow Acres Cedar 460

Birth Date: 10-28-2023 | Bull 21123182 | Tattoo: 460

#*Cole Creek Cedar Ridge 1V
 +*Meadow Acres Cedar 6204
 18661870 +*Fink Miss 1393 8379 NW
ANGUS
 #*Sitz Wisdom 481T
 Meadow Acres Rita 163 7118
 18968396 Meadow Acres Rita 163

#Cole Creek Black Cedar 46P
 #Cole Creek Clovanada 495
 #S A V Net Worth 4200
 Fink Miss 8379 6535 IF
 #*Connealy Onward
 Sitz Elluna Elite 94P
 Meadow Acres Emblazon 983
 +Meadow Acres Rita 944

BW	82
Adj. 205	536
Wt. 12/27/24	1265
SC	42
Adj. %IMF	3.99
Adj. RE	14.7
Dam's NR	5-105

CED	BW	WW	YW	RADG	DMI	YH	SC	DOC	CLAW	ANGLE	PAP	HS	HP	CEM	MILK
+8	+2.2	+68	+127	+28	+1.73	+8	+2.15	+15	+3.8	+4.9	+1.96	+.36	+16.6	+8	+31
35%	70%	50%	35%	35%	85%	25%	2%	70%	75%	60%	70%	30%	75%	55%	20%
MW	MH	\$EN	CW	MARB	RE	FAT	\$M	\$W	\$F	\$G	\$B	\$C			
+69	+5	-22	+43	+95	+18	+0.32	+73	+65	+70	+60	+130	+242			
55%	45%	65%	80%	30%	95%	65%	30%	45%	90%	40%	75%	70%			



Cedar Grandsons

78 Meadow Acres Cedar 4154

Birth Date: 12-27-2023 | Bull 21123158 | Tattoo: 4154

#*Cole Creek Cedar Ridge 1V
 #*Meadow Acres Cedar 6204
 18661870
 #*Fink Miss 1393 8379 NW
ANGUS
 #*GDAR Game Day 449
 #*Meadow Acres Blackbird 5178
 18514436
 #*CCC Blackbird 1520
 #Cole Creek Black Cedar 46P
 #Cole Creek Clovanada 49S
 #5 A V Net Worth 4200
 Fink Miss 8379 6535 IF
 #*Boyd New Day 800S
 #G D A R Miss Wix 474
 #Connealy Thunder
 +ER Blackbird J928

BW	70
Adj. 205	
Wt. 12/27/24	1200
SC	40
Adj. %IMF	
Adj. RE	
Dam's NR	5-107

CED	BW	WW	YW	RADG	DMI	YH	SC	DOC	CLAW	ANGLE	PAP	HS	HP	CEM	MILK
+15	-2.4	+52	+95	+21	+96	+4	+98	+7	+40	+56	-13	+52	+12.9	+5	+33
3%	3%	90%	85%	90%	35%	70%	45%	95%	20%	90%	25%	55%	45%	80%	70%
MW	MH	\$EN	CW	MARB	RE	FAT	\$M	\$W	\$F	\$G	\$B	\$C			
+53	+1	-16	+33	+35	+02	+026	+51	+61	+69	+30	+99	+179			
75%	80%	50%	95%	85%	95%	60%	85%	55%	90%	95%	95%	95%			



79 Meadow Acres Cedar 4156

Birth Date: 12-25-2023 | Bull *21127336 | Tattoo: 4156

#*Cole Creek Cedar Ridge 1V
 #*Meadow Acres Cedar 6202
 18661871
 #*Fink Miss 1393 8379 NW
ANGUS
 #Connealy Thunder
 #*Meadow Acres Rita 329
 17675226
 +Meadowacres Rita 614
 #Cole Creek Black Cedar 46P
 #Cole Creek Clovanada 49S
 #5 A V Net Worth 4200
 Fink Miss 8379 6535 IF
 #Baldridge Kaboom K243 KCF
 #Parka of Conanga 241
 #Sitz Alliance 6595
 08m Rita 9116 of 6054

BW	82
Adj. 205	
Wt. 12/27/24	1010
SC	37.5
Adj. %IMF	
Adj. RE	
Dam's NR	7-102

CED	BW	WW	YW	RADG	DMI	YH	SC	DOC	CLAW	ANGLE	PAP	HS	HP	CEM	MILK
+4	+3.0	+61	+107	+24	+82	+6	+127	+29	+38	+33	+64	+42	+13.9	+5	+33
70%	85%	70%	70%	70%	25%	45%	25%	10%	15%	3%	40%	35%	35%	80%	70%
MW	MH	\$EN	CW	MARB	RE	FAT	\$M	\$W	\$F	\$G	\$B	\$C			
+55	+7	-17	+32	+1.04	-.05	+079	+77	+60	+66	+58	+125	+239			
70%	30%	50%	95%	25%	95%	95%	20%	55%	95%	40%	80%	70%			

81 Meadow Acres Cedar 4182

Birth Date: 01-17-2024 | Bull 21138659 | Tattoo: 4182

#*Cole Creek Cedar Ridge 1V
 #*Meadow Acres Cedar 6202
 18661871
 #*Fink Miss 1393 8379 NW
ANGUS
 #*Connealy Black Granite
 Meadow Acres Eva 652
 18646730
 +Meadow Acres Eva 898
 #Cole Creek Black Cedar 46P
 #Cole Creek Clovanada 49S
 #5 A V Net Worth 4200
 Fink Miss 8379 6535 IF
 #*Connealy Consensus 7229
 #Eura Elga of Conanga 9109
 #Sitz Alliance 6595
 +G A R Ext 6114

BW	72
Adj. 205	
Wt. 12/27/24	995
SC	38
Adj. %IMF	
Adj. RE	
Dam's NR	6-91

CED	BW	WW	YW	RADG	DMI	YH	SC	DOC	CLAW	ANGLE	PAP	HS	HP	CEM	MILK
+10	-.5	+45	+85	+21	+56	+2	-.22	+0	+30	+37	+1.23	+41	+10.5	+10	+31
25%	15%	95%	95%	90%	75%	85%	95%	95%	2%	70%	55%	35%	75%	30%	20%
MW	MH	\$EN	CW	MARB	RE	FAT	\$M	\$W	\$F	\$G	\$B	\$C			
+44	+1	-10	+23	+73	-.04	+047	+53	+50	+60	+46	+106	+190			
80%	80%	35%	95%	50%	95%	80%	80%	80%	95%	65%	95%	95%			

80 Meadow Acres Cedar 4179

Birth Date: 04-14-2024 | Bull *21137989 | Tattoo: 4179

#*Cole Creek Cedar Ridge 1V
 #*Meadow Acres Cedar 6204
 18661870
 #*Fink Miss 1393 8379 NW
ANGUS
 #*Sitz Dash 10277
 Meadow Acres Lass 665
 18646453
 Meadow Acres Lass 4131
 #Cole Creek Black Cedar 46P
 #Cole Creek Clovanada 49S
 #5 A V Net Worth 4200
 Fink Miss 8379 6535 IF
 #*Sitz Upward 307R
 +Sitz Everelda Entense 2665
 #Connealy Thunder
 +Meadow Acres Rita 632

BW	72
Adj. 205	
Wt. 12/27/24	860
SC	35
Adj. %IMF	
Adj. RE	
Dam's NR	4-98

CED	BW	WW	YW	RADG	DMI	YH	SC	DOC	CLAW	ANGLE	PAP	HS	HP	CEM	MILK
+16	-2.7	+57	+109	+28	+77	+4	+1.09	+21	+32	+42	-.87	+30	+12.7	+10	+29
2%	2%	80%	65%	35%	20%	70%	40%	45%	4%	25%	15%	20%	50%	30%	30%
MW	MH	\$EN	CW	MARB	RE	FAT	\$M	\$W	\$F	\$G	\$B	\$C			
+60	+3	-17	+34	+73	-.20	+085	+67	+61	+75	+41	+116	+217			
65%	65%	50%	90%	50%	95%	95%	45%	55%	85%	75%	90%	85%			

82 Meadow Acres Cedar 4185

Birth Date: 02-15-2024 | Bull 21123157 | Tattoo: 4185

#*Cole Creek Cedar Ridge 1V
 #*Meadow Acres Cedar 6202
 18661871
 #*Fink Miss 1393 8379 NW
ANGUS
 #*Koupal Advance 28
 Meadow Acres Miss Kaye 876
 19299560
 Meadow Acres Miss Kaye 6111
 #Cole Creek Black Cedar 46P
 #Cole Creek Clovanada 49S
 #5 A V Net Worth 4200
 Fink Miss 8379 6535 IF
 #Koupal Juneau 797
 *Koupal Ebonette 734
 #Connealy Thunder
 Meadow Acres Miss Kaye 015

BW	80
Adj. 205	279
Wt. 12/27/24	975
SC	37
Adj. %IMF	
Adj. RE	
Dam's NR	5-97

CED	BW	WW	YW	RADG	DMI	YH	SC	DOC	CLAW	ANGLE	PAP	HS	HP	CEM	MILK
+5	+1.3	+64	+110	+22	+1.05	+6	+55	+7	+42	+46	-1.67	+43	+11.5	+13	+37
60%	50%	60%	65%	80%	40%	45%	75%	95%	25%	45%	5%	40%	65%	10%	3%
MW	MH	\$EN	CW	MARB	RE	FAT	\$M	\$W	\$F	\$G	\$B	\$C			
+36	+2	-9	+51	+55	+38	+015	+73	+76	+88	+45	+133	+246			
90%	75%	30%	60%	70%	85%	50%	30%	15%	60%	70%	75%	65%			



83 Meadow Acres Cedar 4193

Birth Date: 02-11-2024 | Bull 21134425 | Tattoo: 4193

#*Cole Creek Cedar Ridge 1V
 #*Meadow Acres Cedar 6202
 18661871
 #*Fink Miss 1393 8379 NW
ANGUS
 #*Sitz Wisdom 481T
 Meadow Acres Winnette 94
 19595101
 #Meadow Acres Winnette 688
 #Cole Creek Black Cedar 46P
 #Cole Creek Clovanada 49S
 #5 A V Net Worth 4200
 Fink Miss 8379 6535 IF
 #*Connealy Onward
 Sitz Elluna Elite 94P
 #*PA Full Power 1208
 Meadow Acres Winnette 149

BW	72
Adj. 205	264
Wt. 12/27/24	1080
SC	37
Adj. %IMF	
Adj. RE	
Dam's NR	3-103

CED	BW	WW	YW	RADG	DMI	YH	SC	DOC	CLAW	ANGLE	PAP	HS	HP	CEM	MILK
+4	+0	+51	+91	+23	+74	+3	+1.31	+9	+34	+45	+2.77	+35	+11.1	+10	+40
70%	25%	90%	90%	75%	20%	80%	25%	90%	10%	40%	85%	25%	65%	30%	7%
MW	MH	\$EN	CW	MARB	RE	FAT	\$M	\$W	\$F	\$G	\$B	\$C			
+19	+0	-3	+31	+36	+12	+017	+73	+67	+66	+32	+98	+200			
95%	90%	20%	95%	85%	95%	50%	30%	35%	95%	90%	95%	95%			



Registered Angus Heifers

84 Meadow Acres Rita 459

Birth Date: 09-11-2023 | Cow 21141214 | Tattoo: 459

#*O C C Juneau 807J
 +*Coleman Rock 7200
 19107936
 +*Coleman Donna 714
 +*S A V Rainfall 6846
 Meadow Acres Rita 14
 20215505
 #Meadow Acres Rita 163 985

#+O C C Emblazon 854E
 O C C Dixie Erica 903E
 #*Connealy Onward
 +*Coleman Donna 386
 #+*Coleman Charlo 0256
 *S A V Blackcap May 4136
 #*Connealy Black Granite
 Meadow Acres Rita 163 7118

BW	65
Adj. 205	418
Dam's NR	2-101

CED	BW	WW	YW	RADG	DMI	YH	SC	DOC	CLAW	ANGLE	PAP	HS	HP	CEM	MILK	
+12	-.6	+64	+113	+1.26	+1.06	+1.3	+1.05	+1.26	+1.36	+1.41	+1.23	+1.36	+16.2	+8	+27	
10%	15%	55%	60%	55%	40%	80%	40%	20%	10%	20%	30%	30%	15%	55%	40%	
MW	MH	SEN	CW	MARB	RE	FAT	\$M	\$W	\$F	\$G	\$B	\$C				
+143	+10	-7	+142	+1.24	+1.65	+1.012	+91	+63	+87	+35	+122	+249				
85%	90%	25%	80%	95%	60%	20%	4%	45%	60%	90%	85%	60%				

85 Meadow Acres Blackbird 416

Birth Date: 08-20-2023 | Cow *21143100 | Tattoo: 416

*Poss Maverick
 +*Poss Rawhide
 19416968
 +*Poss Blueblood 6502
 ANGUS
 #+*Coleman Bravo 6313
 Meadow Acres Blackbird 293
 20528010
 Meadow Acres Blackbird 962

#*Basin Payweight 1682
 Poss Pride 5163
 Poss Easy Impact 0119
 Poss Blueblood 920
 #+*Coleman Charlo 0256
 +*Coleman Donna 714
 #+*S A V Resource 1441
 Meadow Acres Blackbird 642

BW	65
Adj. 205	422
Dam's NR	1-102

CED	BW	WW	YW	RADG	DMI	YH	SC	DOC	CLAW	ANGLE	PAP	HS	HP	CEM	MILK		
+14	-2.3	+68	+102	+1.17	+1.82	-.1	+1.71	+29	+4.7	+4.4	-1.81	+6.6	+7.7	+13	+27		
4%	3%	45%	75%	95%	25%	95%	60%	10%	40%	35%	4%	75%	90%	10%	40%		
MW	MH	SEN	CW	MARB	RE	FAT	\$M	\$W	\$F	\$G	\$B	\$C					
+19	-.3	+5	+46	+4.7	+1.71	+0.57	+88	+84	+84	+84	+42	+125	+250				
95%	95%	10%	75%	80%	50%	90%	5%	5%	65%	75%	85%	60%					



32581 Correa Lane, Echo, OR 97826
Richard Correa (541) 449-3558
Devin Correa (541) 379-0632 Cell
E-mail: meadowacresangus@msn.com www.meadowacresangus.com

Presorted First Class
US Postage Paid
San Luis Obispo
Permit #8

23RD ANNUAL *Production Sale* FEBRUARY 12, 2025



LUNCH AT NOON | SALE AT 1PM
AT THE DOUBLE M SALE BARN • STANFIELD, OR

Your Maternal Power