

*Quality Genetics Built on a Heritage of Commitment*  
**HEART RIVER RANCH**

*Annual Production Sale*

**WEDNESDAY, MARCH 12, 2025**

**The Feedlot • Belfield, ND • 1 p.m. MST**

**GGP DVAuction**  
*Broadcasting Real-Time Auctions*

*Annette's Grandfather, Sam Kessler (left), receiving a champion pen award from Harold Talkington (right), at Western Livestock, Dickinson, ND, in the 1930s.*





Dear Friends,

Welcome to the 28th annual Heart River Ranch production sale. We genuinely appreciate the support you have given to our program over the years and more importantly we treasure your friendship.

2024 provided a variety of maladies from drought to hail to grasshoppers – in the end we felt fortunate to survive with a 8% open rate at preg test time and limited reduction in weight at weaning. Selection for an efficient cow that can produce under less-than-optimal conditions has been the goal and we were definitely stress tested in 2024. As always, we did not creep feed, so the cow herd basically raised these cattle on grass, water and mineral, so we know what the true maternal ability is of our cows. Those who know our program know that we don't just give lip service to maternal selection in our cow herd.

This year we are offering over a 100 lots of breeding stock with 60 bulls and over 80 females to choose from. The bulls were started on a diet of 1% of their body weight in an energy mix and free choice long stem grass/alfalfa hay. On January 1st, we brought the bulls to the feedlot, and they were given a TMR diet which we feel is enough to develop them physiologically without the risk of putting on a level of fat that would reduce their longevity or ability to service cows.

On the female side Frankie and Katie Dillman will again be guest consignors, offering 10 top cut commercial open heifers and 10 bred heifers. The calves will be sired by Heart River Red Angus bulls. These females will be an exceptional cut much like the bred heifers they brought to our 2024 sale. Heart River Ranch will have 35 registered open heifer calves and 13 commercial open heifers along with 12 3-year-old cows bred to calve in late March and early April. These are out of some of our top producing cows and if someone is looking to add some breeding stock that will have been through their first-year calving, this is a potential way to reduce your calving labor.

The bulls and females will be available for viewing at the Open A feedlot all day and any time prior to the sale that it is convenient for you. Give us a call-in advance in advance of your visit and we will put on the coffee.

We are always ready to assist you in your selection decisions and provide any information you may need. Additional information will be made available as it is gathered and posted on our website at [www.heartrivergenetics.com](http://www.heartrivergenetics.com).

Thank you again for your dedication to our program and interest in our cattle. We look forward to seeing you soon.



## Heart River Ranch

Chuck & Annette Steffan Family  
4291 Hwy 85 South  
Belfield, ND 58622

701-290-9745 (Annette) • 701-260-4630 (Chuck)  
[heartrivergenetics@yahoo.com](mailto:heartrivergenetics@yahoo.com)  
Website: [heartrivergenetics.com](http://heartrivergenetics.com)

Lane & Lexus Newling 605-280-4457  
Short Pines Ranch Manager, Buffalo, SD

Guest Consignors:

Frankie & Katie Dillman Family  
307 Canyon Rd  
Grassy Butte ND 58634

Frankie Dillman 701-290-7297  
Katie Dillman 701-218-0113

Email: [frankie.dillman@outlook.com](mailto:frankie.dillman@outlook.com)

## Directions to Heart River Ranch

Cows are located 13 miles west of Buffalo, SD and 12 miles south of Harding, SD. Stop by our home anytime 7 miles south of Belfield right off US Highway 85 or 52 miles north of Bowman, ND on US Highway 85 and look for the Heart River Genetics sign or 43rd St SW.

## Directions to The Feedlot

Bulls are located 3 miles S. of Belfield on US Hwy 85. Go to 40th St SW, turn west 1 mile. You will see the feedlot at the top of the hill.

## Offering

- 62 Yearling Red Angus Bulls**
- 34 Yearling Red Angus Registered Open Heifers**
- 22 Yearling Red Angus Commercial Open Heifers**
- 12 3-Year-Old Red Angus Registered Bred Cows**
- 10 Red Angus Commercial Bred Heifers**

## Cattle Viewing

A cattle viewing is available at any time. Please call any of the contact numbers to make arrangements if you need to see cows or bulls before March 1 so that we are available, and you have ample time to see the cows or bulls.

## Schedule of Events

### Tuesday, March 11, 2025

Open A Angus/Heart River Ranch Feedlot Belfield, ND  
Cattle available for viewing through late evening  
Complimentary Coffee and Rolls, Bars, Cookies..... All Day

### Wednesday, March 12, 2025

Open A Angus/Heart River Ranch Feedlot Belfield, ND  
Complimentary Coffee and Rolls, Bars, Cookies..... All Day  
Complimentary Lunch..... 11:00 a.m. (MT)  
Sale..... 1:00 p.m. (MT)

## Sale Location

Open A Angus/Heart River Ranch Feedlot, Belfield, ND  
3 miles south of Belfield on Highway 85. Go to 40th Street SW, turn west and the barn is on top of the hill. The bulls and heifers will be on display in pens outside of the barn. The sale itself will be a video auction in the warmth and comfort of the barn.

Bulls can be viewed online at [heartrivergenetics.com](http://heartrivergenetics.com) after Feb. 20, 2025.

**DV Auction** The sale will be available online on DVAuction.

## Phone Numbers

If you would like to bid on the telephone, please call 701-290-9745 to make arrangements to be on the telephone for bidding or to have someone look at the cattle for you. The main office phone number to call us on sale day is 701-290-9745. Please call-in advance to make arrangements to call in during the sale.

- 701-260-4630** ..... **Chuck's Cell**
- 701-426-6826** ..... **Scott Weishaar's Cell**
- 701-290-0412** ..... **Tellan Steffan Cell**
- 701-290-7297** ..... **Frankie Dillman Cell**
- 701-290-9745** ..... **Office Cell**

## Internet and Absentee Bids

We would prefer to visit with our customers in person but realize that not everyone can be at the sale; therefore, we have made arrangements to bid through telephone or internet. Bids will be handled in strict confidence by any of the publication representatives or the respective ranches. If you would like to discuss the sale offering call preferably several days before the sale, and we can help select your genetics. Keep in mind that we are sure that we have a bull that will fit your needs. After the sale you will need to contact Annette at 701-290-9745 to make arrangements for payment of telephone purchases.

**Sale Order** The sale order will be catalog order. Supplement sheets with updated pedigrees, HD50k information, carcass ultrasound, etc. will be available on sale day and online at [heartrivergenetics.com](http://heartrivergenetics.com).

## Storm Date

In case of postponement please listen to the Northern Ag Network, KLTC 1460 AM or go to [northernag.net](http://northernag.net), [ndstockmen.org](http://ndstockmen.org), [heartrivergenetics.com](http://heartrivergenetics.com) for any postponement announcement. Postponement sale date is set for March 13, 2025, 1:00 pm.

## Transportation

Belfield, ND and Dickinson, ND are both served by bus. Dickinson, ND is also served by United, Delta and Frontier Airlines. Please call 701-290-9745 if you need transportation from the bus or airport.

## Lodging

Lodging is available in Belfield, ND.

### Trapper's Inn Motel

801 Hwy 85 N, Belfield, ND ..... 701-575-4261

### Cowboy Inn

406 Hwy 10 E, Belfield, ND ..... 701-575-4245

## Sales Team

### Auctioneer:

Scott Weishaar ..... 701-426-6826 (c), 701-872-5299 (h)

### Ring Service:

Scott Dirk, Tri-State Livestock News ..... 605-456-1499  
Kirby Goetsch, Farm & Ranch Guide..... 605-380-3939  
Jory Boote, Cattle Business Weekly ..... 701-789-7047  
Dennis Ginkens, Western Ag Reporter ..... 406-670-9839

## Bull Commentary

Chuck Steffan, Heart River Ranch..... 701-260-4630 (c)

## Sale Block Clerk

Laura Madzo

## Sale Video

Theresa Howie and Ken Howie

## Announcements

Errors discovered in the catalog will be corrected by announcements from the auction block at sale time and such corrections will take precedence over the printed matter in the catalog.



Scott Weishaar



Scott Dirk



Kirby Goetsch



Jory Boote



Dennis Ginkens



## Liability

All persons who attend the sale do so at their own risk. Neither the owners, management, sales staff, facility or any person connected with this sale assume liability, legal nor otherwise, for property loss or for any accidents that may occur.

## Delivery

Free Delivery to central points up to 500 miles. Balance will be at cost. We will make every effort to assist in deliveries of greater distance or by private arrangements and volume purchases. Delivery will be made at our convenience and efforts will be made to have bulls delivered by May 1.

## Feeding and Development of Bulls

All bulls of Heart River Ranch were weaned in September. Calves received their pre-weaning and weaning vaccinations and were handled in every respect as all natural. Bulls were fed to gain 3 lb. per head per day on a 1% grain and by product rotation. Bulls were fed free choice mineral, salt, and hay. We took yearling weights at approximately 105 to 120 days post weaning with no post weaning adjustment period or warm up period. Our intent is to grow out the bulls for maximum longevity and integrity of the bull.

## Historic Photos

Most of the historic photos in this catalog were taken by Inez Kessler, Annette's great grandmother between 1905 and 1908 in the Gaylord, ND area. Inez was the only person to have a camera in the area and as a result she took pictures of many people and events. The town of Gaylord was located about 13 miles south of Belfield, ND along US Highway 85. The Gaylord Post Office and store was a stop for travelers going south. This building still stands at the Curt Molm+ place.

## Red Angus EPD Averages (non-parent)

ProS	HB	GM	CED	BW	WW	YW	ADG	DMI	M	ME	HPG	CEM	ST	MB	YG	CW	REA	FAT
106	53	52	13	-1.8	65	104.0	2.4	0.73	26	2	12	7	14.6	0.45	0.05	24	0.16	0.02

All cattle will have genomically-enhanced EPDs.

## Sale Terms & Conditions

The terms of the sale are cash. No release will be given until satisfactory settlement has been made. All settlements will be made with the clerks of the sale immediately after the sale. We reserve the right to withhold animals from shipment for whom payments have not been received prior to departure date. Every animal sells to the highest bidder and in cases of disputes, the auctioneer's decision will be final. All Sales are subject to an acceptable semen examination. Semen evaluation certificates will be furnished to the buyer at delivery.

Bulls will be carcass ultra sounded on approximately February 25.

Updated EPD information, carcass ultrasound, and genomic data will be provided at the sale and available at [www.heartrivergenetics.com](http://www.heartrivergenetics.com) or [www.openangus.com](http://www.openangus.com). This information will be available as soon as it is received from the Red Angus Association of America.

All bulls have been tested using the Geneseek HD genomic test and parent verified. All bulls and heifers sold will be DNA tested free of any known genetic defects.

Health certificates and brand releases will be furnished for shipment anywhere in the United States.

Females will be available to take home after the sale.

Each animal carries a readable tattoo or freeze brand.

## Insurance

Ownership risk to purchaser commences when the auctioneer's hammer falls. It is recommended that buyers insure their purchases for safe delivery. Purchaser assumes the risk of death or injury to their livestock when the hammer falls. Martin-Trudeau Insurance will be available sale day to discuss insurance options.

## Heart River Ranch Loss of Use Policy

2025 optional loss of use policy: Heart River Ranch is striving to offer the best options not only in beef animal genetics but also loss of use protection for bulls and/or females we offer to our customers. We **strongly** recommend that our buyers purchase insurance on their animals. Animals that will be fed for an extended period need to have insurance on them.

Heart River Ranch will pay 5% of sale price toward the insurance policy. The balance of the policy will be paid by the customer. If the customer chooses to decline the policy, Heart River Ranch has no obligation to cover any losses due to injury, sickness, or death. Heart River Ranch does guarantee all cattle to be sound the day of the sale. All bulls will be semen tested by the Wibaux Vet Clinic in March/April 2025.

**Breeder's Guarantee:** All bulls are guaranteed to be breeders. All claims for adjustments or refunds must be made in writing within six months of the sale date. In the event a bull is claimed to be a non-breeder, the purchaser may return the animal to the ranch of the seller if in good condition and complying with the health requirements of the seller's state. The seller will be entitled to six months trial following the return of the animal in which to prove that the animal is a breeder. If at the end of six months, the seller shall be obligated to replace the animal with another of equal value or to refund the purchase price. The return of the full purchase price shall in any case be deemed full satisfaction and settlement. If the seller proved the animal to be a breeder, it shall be the obligation of the purchaser to take delivery of the animal at the purchaser's expense.

**Implied warranty:** Except for those stated in the terms and conditions, there are no warranties, either expressed or implied, as to merchantability or fitness for a particular purpose with respect to the cattle being sold in this auction. The warranties set forth in the terms and condition are in lieu of all other warranties, either expressed or implied and the remedies provided shall be the sole and exclusive remedy of the buyer, or any party claiming through the buyer for any breach of warranty or guarantee therein provided and all obligations or liabilities.

## Health

Bulls and heifers were treated with Enforce at birth. At branding calves were calf hood vaccinated with One Shot BVD, Enforce and a 7-way. At weaning, calves were given a 5-way, 7-way and One Shot, boosters were also given. Calves and cows were poured or injected with Dectomax in the spring, fall and late winter. All bulls will be vaccinated with Preg Guard and wormed prior to delivery. All females are bangs vaccinated and on a fall vaccination program.

## Semen Tests:

Bulls will be semen tested after the sale.

## Semen Interests:

Heart River Ranch are respectively retaining 50 percent revenue-sharing semen interest in every bull selling in this sale. Full possession and full salvage value sells on all bulls. If a buyer chooses to collect and market semen, the seller will share proportionately in the collection costs and revenues earned. If the seller chooses to collect semen for "in herd" use, it will be done at the seller's expense and at buyer convenience. Semen will be made available to buyer at cost.

## Volume Discounts

We are pleased to give a volume buyer discount. You will receive 5% off purchases of 3 to 5 bulls, and 10% off of 5 or more bulls. Please notify the clerk when you check out to receive your discount. This is another way to say "Thank You" for your trust in our program.



Chuck and Annette Steffan



Steffan Family



Lane, Rylee and Lexus Newling  
2025 Short Pines Ranch Managers



Frankie and Katie Dillman Family

*A special thank you to all our friends and neighbors  
for your help and support to help us make this sale possible!*

**Auctioneer**

Scott Weishaar

**Catalog and Ad Design**

Cow Camp Promotions, 701-391-5440

**Printing**

United Printing, Bismarck, ND

**Videography**

Ken and Theresa Howie, 701-495-1706  
Ken Howie Studios

**Photography**

Annette Steffan  
Katie O'Rourke

**Veterinarians**

Terry Hall, DVM, 406-796-2624  
Wibaux Veterinary Clinic, Wibaux, MT

**Brand Inspection**

Donovan O'Brien

**Carcass Ultrasound**

Jason McLennan, 605-645-1630  
McLennan Enterprises

**Sound**

Qwain Malkowski

**Meals**

Meats: Donald & Sarah Nordby,  
Badlands Genetics 701-879-6376  
Salads, Sides and Desserts: Peggy Stroh  
Kitchen: Peggy Stroh, Deanna Jilek,  
Toby Stroh

**Embroidery**

Caps: Krazy Kreft Embroidery,  
Streeter, ND

**Clipping**

Austin Buzanowski  
B Diamond Cattle Services,  
Glendive, MT

**Website**

Therese Howie,  
Tess Howie Media and Marketing

**Office Crew**

Heather Weishaar, head clerk  
Annette Steffan  
Laura Madzo

**Barn Crew**

Ashtyn Arnold  
Tara Beach  
Larissa Boltz  
Cody Booth  
Camron Corneil  
Tracey Freeman  
Derek Kessel  
Will Steffan



Udder Suspension			Teat Size		
Score	Description	Example	Score	Description	Example
9	Very Tight		9	Very small	
7	Tight		7	Small	
5	Intermediate/moderate		5	Intermediate/moderate	
3	Pendulous		3	Large	
1	Very pendulous, broken floor		1	Very large, balloon-shaped	

### Foot and Leg Scoring Reference

**CLAW SHAPE** Reference: Shape (primarily curl) and unevenness of the claw set.



**FOOT ANGLE** Reference: Strength of pastern, depth of heel and length of foot.



**REAR LEG SIDE VIEW** Reference: Angle measured at the front of the hock.



# A-BAG-A-BULL



**RED ANGUS**  
RANCH TESTED. RANCHER TRUSTED.

If you purchase a bull from us, we will provide you with credit equal to the value of one bag of Feeder Calf Certification Program or Allied Access tags for each bull you purchase. To redeem your credit, bring your receipt for the tags to next year's sale and we will apply it to your bull purchase.

The FCCP provides age, source and genetic verification for calves sired by registered Red Angus bulls. Cattle enrolled in the FCCP are accepted into the exclusive Choice+ and G.O. Red grids. The FCCP 'yellow tags' are recognized by buyers nationwide and return a premium for Red Angus calves enrolled in the program.

The Allied Access program provides age and source verification for commercial cattlemen whose bull battery does not exclusively contain registered Red Angus bulls. Whether you are utilizing multiple sire breeds or halfblood bulls, enrolling in Allied Access demonstrates to buyers that you are taking an extra step in marketing your calves and adding value throughout the production chain.

To enroll in the FCCP or Allied Access, contact the Red Angus marketing department. Enrollment is simple and free of charge.

**RedAngus.org**  
**940-477-4593**

**Watch & Bid online for FREE!**

**DVAuction**  
*Broadcasting Real-Time Auctions*

**Visit [www.dvauction.com](http://www.dvauction.com)  
and Register!**

*It's as easy as 1, 2, 3 ...*

1. Create an account at [www.dvauction.com](http://www.dvauction.com) under the "create new account" tab.
2. Apply for bidding by clicking "apply for bidding" in the upper left corner of your screen, at least 24 hours prior to the auction.
3. Tune into the sale and make your purchases!

**Can't make the sale?**

Let DVAuction bring the sale to you!

**Busy during the sale?**

Let DVAuction represent your bid!

For general questions,  
please contact our office:

**(402) 316-5460 or [support@dvauction.com](mailto:support@dvauction.com)**

*\*High Speed Internet Access Required*



# REDS RISING

## Escalate Your Prosperity

Red Angus boosts profitability with docile temperaments, environmental resilience, premium carcass quality and exceptional maternal traits. Registrations have surged by 24% over the past decade, underscoring Red Angus' significance across all segments of the beef industry.

Scan the QR code for  
real rancher stories  
about the rising power  
of Red Angus.



[RedAngus.org](https://RedAngus.org)

**RED ANGUS**

RANCH TESTED. RANCHER TRUSTED.





Serving Ranchers and Producers in Southwest North Dakota and Surrounding Areas. Contact Frankie for all your Cattle, Hay, and Custom Hauling Needs.

Frankie Dillman  
Dillman Trucking LLC  
(701) 290-7297 Grassy Butte, ND



SOLUTIONS LLC

DENNIS G. FROEMKE  
CEO

Range Management Consultant (CRMC)  
SRM Certified Range Mgmt. Consultant  
NRCS Certified Technical Service Provider  
Author

10860 26th Street SW  
Dickinson, North Dakota 58601

CELL: 701-260-0785  
Email: froemke@ndsupernet.com



MARTIN-TRUDEAU INSURANCE

# LIVESTOCK DIVISION

★ Livestock insurance endorsed by the SD Angus Association, the SD Simmental Association and the SD Hereford Association ★

**We offer livestock insurance for all your needs!**

- OPTION 1: All Risk Mortality (ARM)–100% Indemnity** *Bulls & Females*
- OPTION 2: ARM + Accidental External Injury (ACC)–80% Indemnity** *Bulls Only*
- OPTION 3: ARM + Accident Sickness & Disease Infertility (ASD)–80% Indemnity** *Bulls Only*
- OPTION 4: ARM + Comprehensive Infertility (COMP)–85% Indemnity** *Bulls Only*

COVERAGES ARE SUBJECT TO APPLICABLE DEDUCTIBLES AND/OR COINSURANCE, MINUS SLAUGHTER VALUE.



1531 West Elm Street, P.O. Box 487, Mitchell, SD 57301  
605-996-3106 or 1-800-450-3106 ★ [www.Martin-TrudeauInsurance.com](http://www.Martin-TrudeauInsurance.com)





SIRE **A**

## 5L BODY BUILDER 4434-68D

BIRTH DATE: **2/11/16** REG. #: **3565030** CAT: **1A 100%**

HB	GM	CED	BW	WW	YW	MK	ME	HPG	CEM	ST	MB	YG	CW	REA	Fat
-16	60	7	1.1	74	117	23	10	4	0	12	0.63	-0.05	25	0.45	0.01

5L DEFENDER 560-30Z  
**5L BLOCKADE 2218-30B**  
 5L OPAL 656-2218

5L CRAFTSMAN 1134-150X  
**5L RED BIRD 411-4434**  
 5L RED BIRD 1312-411

5L ADVOCATE 817-14W  
 5L BLACK ADINA 525-560  
 O C C PROTOTYPE 847P  
 5L OPAL 0052-656  
 5L TRADESMAN 1715-6237  
 5L TESS 5166-1134  
 VGW KING OF THE WEST  
 NORSEMAN 1312 PJM

BW	79
ADJ WW	716
WR	114
ADJ YW	1238
YR	114

*5L Body Builder is a Blockade x Craftsman combination that brings maternal, growth and carcass traits to a sustainable platform. Body Builder daughters in production have outstanding udder confirmation, added depth of rib and are easy fleshing. We have used*

*Body Builder and several sons in our herd to capture the value that they bring to the business of making cows. 6 sons sell.*



**DAHLKE ROCKEFELLER 009H**



SIRE **B**

## DAHLKE ROCKEFELLER 009H

BIRTH DATE: **2/23/20** REG. #: **4261367** CAT: **1A 100%**

HB	GM	CED	BW	WW	YW	MK	ME	HPG	CEM	ST	MB	YG	CW	REA	Fat
87	89	14	-4.0	75	114	33	2	18	8	17	1.07	0.16	34	0.07	0.03

5L ADVANTAGE 3267-221Y  
**5L BOURNE 117-48A**  
 5L ROXIE 854-117

BIEBER CL ATOMIC C218  
**DAHLKE MS HILTON 13F ET**  
 DAHLKE MS.HILTON 263C

BUF CRK THE RIGHT KIND U199  
 5L ADINA 195-3267  
 5L SIGNATURE 5615  
 XXX ROXIE 854 MR  
 ANDRAS FUSION R236  
 BIEBER DATELINE 308Y  
 MLK CRK REDSTONE  
 DAHLKE LOVE BIRD 200Y

BW	76
ADJ WW	720
WR	103
ADJ YW	1373
YR	108

*Dahlke Rockefeller 009H was an AI sire we selected after doing some research with friends who had seen him and his offspring. He sires balanced calving ease, growth and carcass traits. They have great dispositions and exceptional feet. He has top ranking*

*EPDS and consistently sires dark red. Rockefeller had an injury that put him down at an early age. Semen is rare and these will be a limited sample of his sons for sale in 2025. 6 sons sell.*



**RED HILL B571 JULIAN 84S**



SIRE **C**

## RED HILL B571 JULIAN 84S

BIRTH DATE: **9/2/06** REG. #: **1147702** CAT: **1A 100%**

HB	GM	CED	BW	WW	YW	MK	ME	HPG	CEM	ST	MB	YG	CW	REA	Fat
98	31	16	-3.0	55	87	28	-7	15	7	20	0.31	-0.04	0	0.24	0.03

BKT JULIAN 7526 G  
**BECKTON JULIAN GG B571**  
 BKT MARTA 9A13 JL

BECKTON CHAMP R3 H338  
**BECKTON BARMAID M554 CH**  
 BECKTON BARMAID H031 HR

BECKTON JULIAN 6592  
 BKT BELGA 6746 GS  
 BKT JULIAN 7526 G  
 BKT MARTA 6498 XM  
 BECKTON CHAMP RK ET121  
 BECKTON ENCINO C644 ZN  
 BECKTON HERALD F FA20  
 BECKTON BARMAID F083 CZ

BW	80
ADJ WW	517
WR	ET
ADJ YW	992
YR	ET

*We noticed how many Red Hill B571 Julian 84S daughters were still in the herd from the one year we used him AI and decided to use some semen we still had in the tank. The older genetics from Red Hill B571 Julian 84s held up really well with the other sires.*

*Good dispositions and feet, great daughters with longevity. There is a reason why you see so many daughters in production. 6 sons sell.*





**RIDGE RAD 9075**



## RIDGE RAD 9075

SIRE **D**

BIRTH DATE: **2/14/19** REG. #: **4132976** CAT: **1A 100%**

HB	GM	CED	BW	WW	YW	MK	ME	HPG	CEM	ST	MB	YG	CW	REA	Fat
62	46	15	-4.3	59	88	24	-12	16	6	13	0.61	-0.09	4	0.17	-0.01

5L ADVOCATE 817-14W  
**5L DEFENDER 560-30Z**  
 5L BLACK ADINA 525-560

5L GRAND EXPRESS 453-5655  
**RIDGE CASEY 978-8034**  
 OTT-CASEY-F412-978

5L SIGNATURE 5615  
 5L MARTA 345-817  
 TC STOCKMAN 365  
 5L ADINA 293-525  
 5L NORSEMAN EXPRESS  
 5L RUBY 01-453  
 BUFCRK SIOUX CANYON 4759  
 BKT LARKEISA F412 RU

BW	78
ADJ WW	678
WR	110
ADJ YW	1242
YR	109

*Ridge RAD 9075 has been used extensively both AI and natural in our herd. He was primarily a calving ease bull but we bred him to some performance cows this year and found he can sire performance cattle as well. If you need some performance in your steers but still need good dispositions and excellent udders, he will get it done. 6 sons sell.*



**JACOBSON MECHANIC 9118, SIRE**



## JACOBSON MECHANIC 1033

SIRE **E**

BIRTH DATE: **2/1/21** REG. #: **4529285** CAT: **1A 100%**

HB	GM	CED	BW	WW	YW	MK	ME	HPG	CEM	ST	MB	YG	CW	REA	Fat
43	81	18	-4.9	52	97	25	7	13	10	13	0.67	0.17	28	0.25	0.07

5L CRAFTSMAN 2393-13C  
**JACOBSON MECHANIC 9118**  
 JACOBSON SADIE 7122

5L BOURNE 117-48A  
**JACOBSON QUEEN 8085**  
 FOREVER QUEEN 948-2657

5L CRAFTSMAN 1134-150X  
 5L MISS MATTIE 50-1293  
 KF RITO 3115  
 JACOBSON SADIE 3151  
 5L ADVANTAGE 3267-221Y  
 5L ROXIE 854-117  
 5L FOREVER GRAND 5834  
 NER COPPER QUEEN 2657

BW	72
ADJ WW	668
WR	101
ADJ YW	1114
YR	104

*Jacobson Mechanic 1033 was an active sire used naturally that combined calving ease with an excellent Gridmaster index. He sired a very consistent set of calves. His dam stems from 5L BOURNE 117-48A and the Infamous Forster Copper Queen cow family. 6 sons sell.*



**RIDGE NAVIGATOR 0039**



## RIDGE NAVIGATOR 0039

SIRE **F**

BIRTH DATE: **2/8/20** REG. #: **4277841** CAT: **1A 100%**

HB	GM	CED	BW	WW	YW	MK	ME	HPG	CEM	ST	MB	YG	CW	REA	Fat
72	68	14	-1.8	67	107	28	5	14	9	16	0.77	0.13	27	0.12	0.04

RRA IMPACT 505  
**RIDGE COMPASS 7087**  
 RIDGE LILA 8132-0017

5L SIGNATURE 5615  
**RIDGE HOB0 016-9027**  
 SIXL MS HOB0 016

RED SSS SOLDIER 365W  
 RRA RACHEL 746 144  
 5L AVALANCHE 525-1014  
 RIDGE LILA 101-8132  
 5L NORSEMAN KING 2291  
 5L RUBY 199-01  
 BUFCRK HOB0 1961  
 MISS BHR GLACIER BO 772

BW	83
ADJ WW	681
WR	109
ADJ YW	1350
YR	115

*This will be the third set of bulls to sell by Ridge Navigator 0039. We really like the daughters in production. They are dark red with good length and volume with really nice udders. His 14 year old dam, RIDGE HOB0 016-9027 is a 5L Signature 5615 x Buf Crk*

*Hobo 1961 combination that is the top-ranking cow in Sandbur Ridge's Cornerstone cow program posting a 93 BWR, 108 WW, 106 YW, 131 IMF and a 99 REA with 13 natural calves to her credit on 366 day calving interval. 4 sons sell.*





**HRR COPENHAGEN 2265**



SIRE **G**  
**HRR COPENHAGEN 2265**

BIRTH DATE: **3/1/22** REG. #: **4637197** CAT: **1A 100%**

HB	GM	CED	BW	WW	YW	MK	ME	HPG	CEM	ST	MB	YG	CW	REA	Fat
75	35	11	0.6	73	108	21	3	14	9	16	0.23	0.02	33	0.18	-0.01

RED RMJ REDMAN 1T  
**RED MINBURN COPENHAGEN 3Y**  
MINBURN MAY 112M

RED TER-RON BLITZ 611N  
**RED BAR-E-L BULL MEG 985W**  
RED BAR-E-L MEG 85N

- 5L NORSEMAN KING 2291
- CROWFOOT KURUBA 4033P
- CRESCENT CREEK MAIN EVENT 6H
- MINBURN MAY 90G
- RED TER-RON MAMBO 28K
- 11C
- RED YY RED KNIGHT 640F
- RED BAR-E-L MEG 035G

BW	86
ADJ WW	724
WR	ET
ADJ YW	1274
YR	ET

*HRR Copenhagen 2265 was a top seller in our 2022 sale. We will continue to use him based on what we see in his calves in several herds. His dam, RED Bar E-L-Bull Meg 985W came from the infamous Meg cow family from Bar EL in Canada was a moderate tank of a cow and his heifer calves look to follow suit. 4 sons sell.*



**RIDGE DIMENSION 1010**



SIRE **H**  
**RIDGE DIMENSION 1010**

BIRTH DATE: **1/25/21** REG. #: **4454263** CAT: **1A 100%**

HB	GM	CED	BW	WW	YW	MK	ME	HPG	CEM	ST	MB	YG	CW	REA	Fat
31	53	8	1.3	81	130	26	7	10	1	16	0.51	0.09	32	0.27	0.03

5L BLOCKADE 2218-30B  
**5L BODY BUILDER 4434-68D**  
5L RED BIRD 411-4434

5L LEGEND 1553-425V  
**RIDGE CASEY 9071-4050**  
RIDGE CASEY 155-9071

- 5L DEFENDER 560-30Z
- 5L OPAL 656-2218
- 5L CRAFTSMAN 1134-150X
- 5L RED BIRD 1312-411
- 5L LAKOTA LEGEND 7074
- 5L HAZEL 45L-1553
- 5L SIGNATURE 5615
- RIDGE CASEY F7-155

BW	85
ADJ WW	677
WR	109
ADJ YW	1328
YR	112

*Ridge Dimension 1010 was one of our sale picks in 2022 from Sandbur Ridge Red Angus to continue the 5L BODY BUILDER 4434-68D line. He was a moderate birth but a top performing bull in their sale and he looks to be holding true to his record. He is easy going with a balanced EPD profile out of a proven 10-year-old dam, RIDGE CASEY 9071-4050 who has a 103 MPPA on 8 head. 4 sons sell.*



**RIDGE AVALANCHE 2051**



SIRE **I**  
**RIDGE AVALANCHE 2051**

BIRTH DATE: **2/3/22** REG. #: **4621947** CAT: **1A 100%**

HB	GM	CED	BW	WW	YW	MK	ME	HPG	CEM	ST	MB	YG	CW	REA	Fat
91	42	10	-1.8	57	86	26	-5	12	7	19	0.58	-0.04	3	0.09	0.00

5L NORSEMAN KING 2291  
**RED RMJ REDMAN 1T**  
CROWFOOT KURUBA 4033P

5L AVALANCHE 525-1014  
**RIDGE LILA 8132-0017**  
RIDGE LILA 101-8132

- VGW KING OF THE WEST
- NORSEMAN 1312 PJM
- O C C HUNTER 928H
- RED CROWFOOT KURUBA 2030M
- 5L AMBUSH 587-5292
- 5L ADINA 293-525
- 5L GRAND EXPRESS 453-5655
- RIDGE LILA 979-101

BW	91
ADJ WW	671
WR	ET
ADJ YW	1271
YR	ET

*Ridge Avalanche 2051 is a son of RIDGE LILA 8132-0017, a Sandbur Ridge Red Angus cow that was as good as you could make one. We look forward to more of his offspring in 2025. 2 son sells.*





**HRR FRANCHISE 8211**



SIRE **J**  
**HRR FRANCHISE 8211**

BIRTH DATE: **2/28/18** REG. #: **3954915** CAT: **1A 100%**

HB	GM	CED	BW	WW	YW	MK	ME	HPG	CEM	ST	MB	YG	CW	REA	Fat
93	76	16	-3.9	59	98	31	-4	12	10	19	0.67	0.02	26	0.33	0.02

SPUR FRANCHISE 7070  
**SPUR FRANCHISE OF GARTON**  
H & H IRENE LASS 0135

5L LEGEND 1553-425V  
**HRR MONA 428**  
LEWIS MONA 108

BASIN FRANCHISE P142  
H&H L&C LADY BEHAVE 5040  
SYDGEN C C & 7  
H & H IRENE LASS 7116  
5L LAKOTA LEGEND 7074  
5L HAZEL 45L-1553  
MLK CRK MAX 9222  
TR MONA MT256

BW	78
ADJ WW	714
WR	106
ADJ YW	1195
YR	108

*HRR Franchise 8211 was a home raised bull that we used lightly but have really been pleased with the daughters and bull calves. We collected semen before his untimely passing and will be using him heavier in the future. He has a great set of indices to go with the consistent phenotype he passes on to his offspring. 1 son sells.*



**HRR EXPRESS 5142**



SIRE **K**  
**HRR EXPRESS 5142**

BIRTH DATE: **3/14/15** REG. #: **3491493** CAT: **1A 100%**

HB	GM	CED	BW	WW	YW	MK	ME	HPG	CEM	ST	MB	YG	CW	REA	Fat
102	26	19	-4.7	66	90	28	1	6	13	22	0.41	0.23	21	-0.36	0.03

5L GRAND EXPRESS 453-5655  
**MLK CRK EXPRESS 9127**  
MLK CRK SHEBA 043

SHOCO DATA  
**HRR LAKOTA 115**  
MLK CRK LAKOTA 850

5L NORSEMAN EXPRESS  
5L RUBY 01-453  
BJR PROOF 224-159  
MLK CRK SHEBA 869  
SHOCO SIR ROBIN  
VDAR BLACKANA 303  
GLACIER CUB 446  
MLK CRK LAKOTA 651

BW	81
ADJ WW	727
WR	
ADJ YW	1229
YR	

*HRR Express 5142 was a bull we raised out of HRR Lakota 115, a cow who was a prolific generator of great cows. We continue to use him through AI. HRR Express 5142 had a mild disposition and probably had as good a set of feet as you could find with great heel depth and toe conformation. His daughters are surfacing as being fault free with good udders and will carry on the usefulness of their sire. 2 sons sell.*

**RIDGE ADMIRAL 3411 ..... 1589182**

ProS	HB	GM	CED	BW	WW	YW	ADG	DMI	M	ME	HPG	CEM	ST	MB	YG	CW	REA	FAT
157	78	80	14	-1.9	54	102	0.30	1.09	25	3	22	4	17	0.42	0.25	51	0.29	0.07

**RIDGE KEGGER 2102 ..... 4621845**

ProS	HB	GM	CED	BW	WW	YW	ADG	DMI	M	ME	HPG	CEM	ST	MB	YG	CW	REA	FAT
76	35	41	7	1.5	73	106	0.21	0.81	23	1	9	0	16	0.60	0.14	18	0.07	0.05

**5L FOREMAN 2174-370E ..... 3744501**

ProS	HB	GM	CED	BW	WW	YW	ADG	DMI	M	ME	HPG	CEM	ST	MB	YG	CW	REA	FAT
106	56	49	17	-3.5	79	130	0.31	1.27	19	6	16	7	14	0.48	0.09	25	0.16	0.03

**RED FLYING K MAX 159Y ..... 1629869**

ProS	HB	GM	CED	BW	WW	YW	ADG	DMI	M	ME	HPG	CEM	ST	MB	YG	CW	REA	FAT
127	90	37	13	-2.0	54	87	0.20	0.75	19	-10	11	8	19	0.48	0.09	9	-0.11	0.02

**RED WINDY HILL ZEPPELIN 1240 ..... 1641379**

ProS	HB	GM	CED	BW	WW	YW	ADG	DMI	M	ME	HPG	CEM	ST	MB	YG	CW	REA	FAT
78	58	21	12	-0.2	75	116	0.26	0.82	25	-1	9	4	18	0.19	0.00	16	0.22	0.02

**RIDGE PRAGMATIC 6098 ..... 3552183**

ProS	HB	GM	CED	BW	WW	YW	ADG	DMI	M	ME	HPG	CEM	ST	MB	YG	CW	REA	FAT
89	60	29	12	-1.6	71	107	0.22	0.84	26	9	23	5	13	0.27	-0.08	19	0.28	-0.01

**RIDGE JD 2510 ..... 4621689**

ProS	HB	GM	CED	BW	WW	YW	ADG	DMI	M	ME	HPG	CEM	ST	MB	YG	CW	REA	FAT
113	78	34	21	-6.4	56	82	0.16	0.25	25	-1	14	12	16	0.32	-0.04	11	0.16	0.00

**RED U-2 AUTHENTIC 139A ..... 2495718**

ProS	HB	GM	CED	BW	WW	YW	ADG	DMI	M	ME	HPG	CEM	ST	MB	YG	CW	REA	FAT
10	19	-9	4	2.6	74	98	0.15	0.64	20	-18	10	0	10	-0.03	0.09	28	-0.07	0.00

**RED MINBURN COPENHAGEN 3Y ..... 2400918**

ProS	HB	GM	CED	BW	WW	YW	ADG	DMI	M	ME	HPG	CEM	ST	MB	YG	CW	REA	FAT
108	74	34	9	0.1	67	104	0.23	0.65	23	-7	14	7	15	0.10	0.07	37	0.21	0.01

**OCC RED GRAZER 610Z ..... 1666776**

ProS	HB	GM	CED	BW	WW	YW	ADG	DMI	M	ME	HPG	CEM	ST	MB	YG	CW	REA	FAT
113	76	37	10	-2.7	55	83	0.18	0.16	32	-5	10	3	21	0.29	0.09	17	0.08	0.03

**RIDGE REDMANS LEGEND 1015 ..... 4454273**

ProS	HB	GM	CED	BW	WW	YW	ADG	DMI	M	ME	HPG	CEM	ST	MB	YG	CW	REA	FAT
100	101	-1	12	-2.8	49	79	0.19	0.49	27	-8	13	7	21	-0.01	-0.12	-2	0.23	0.00

# Red Angus Guide to EPDS and Indexes

**ProS...** Profitability and Sustainability is an all-purpose index that predicts average economic differences in all segments in the beef supply chain. This index is a combination of the breeding objectives modeled in the HerdBuilder and GridMaster selection indexes. In this index, replacement heifers are retained from within the herd and all remaining progeny are fed out to slaughter and sold on a quality-based grid. Traits included in this index include calving ease, growth, HPG, STAY, Mature Weight, Dry Matter Intake and carcass traits. The resulting index is expressed in dollars per head born (Index/High Value).

**HB .....** HerdBuilder is a maternal selection index that predicts the economic differences of animals for traits that are important from conception through weaning. Expressed as dollars per head born, HB is calculated based on the scenario that bulls are mated to heifers and cows, replacement heifers are retained and all remaining progeny are marketed at weaning. Traits included in the HB index include Calving Ease Direct, Calving Ease Maternal, Weaning Weight, Milk, Mature Weight, Heifer Pregnancy and Stayability (Index/High Value).

**GM.....** GridMaster is a selection index that predicts the average economic difference of non-replacement calves through the post-weaning phase of production. GM places selection pressure on growth, feedyard performance and carcass traits. Expressed as dollars per head born, GM is calculated based on the scenario that progeny are fed out to slaughter and marketed on a quality-based carcass grid. Traits included in GM include Average Daily Gain, Carcass Weight, Dry Matter Intake, Marbling, Back Fat and Rib Eye Area (Index/High Value).

**CED.....** Calving Ease Direct predicts differences in the percent of calves born unassisted out of 2-year-old dams. (Percent/High Value)

**BW .....** Birth Weight predicts differences in actual birth weight of progeny. (Pounds/Low Value)

**WW .....** Weaning Weight predicts differences in 205-day weaning weight. (Pounds/High Value)

**YW .....** Yearling Weight predicts differences in 365-day yearling weight. (Pounds/High Value)

**ADG.....** Average Daily Gain predicts differences in weight gain between 205 and 365 days of age. (Pounds/High Value)

**DMI.....** Dry Matter Intake predicts differences in daily feed intake as measured in a feedlot during the post-weaning period. (Pounds/Low Value)

**MILK .....** Milk predicts differences in weaning weight attributed to the milking ability of the animal's daughters. (Pounds/High Value)

**ME .....** Maintenance Energy predicts the difference in maintenance energy requirements. (Mcal per Month/Low Value)

**HPG.....** Heifer Pregnancy predicts differences in the percent of daughters who are able to conceive and calve at 2 years of age following exposure to breeding. (Percent/High Value)

**CEM.....** Calving Ease Maternal predicts differences in the percent of daughters who are able to calve unassisted as 2-year-old heifers. (Percent/High Value)

**STAY.....** Stayability predicts differences in the ability of an animals' retained daughters to remain productive in the herd – calve every year – through 6 years of age. (Percent/High Value)

**MARB....** Marbling predicts differences in marbling score – amount of intramuscular fat measured at the 13th rib. (Marbling Score Units/High Value)

**YG .....** Yield Grade predicts differences in USDA Yield Grade, which is calculated using CW, REA and Fat. (Yield Grade Units/Low Value)

**CW .....** Carcass Weight predicts differences in actual hot carcass weight. (Pounds/High Value)

**REA.....** Ribeye Area predicts differences in square inches of ribeye area measured at the 13th rib.(Square Inches/High Value)

**FAT.....** Fat predicts differences in the depth of backfat measured between the 12th and 13th ribs. (Inches/Low Value)

**RED ANGUS**  
RANCH TESTED. RANCHER TRUSTED.  
[RedAngus.org](http://RedAngus.org)







**LOT 1**

**LOT 1**

## HRR BODY BUILDER 4238

ProS	HB	GM
83	47	36

80% 63% 81%

BIRTH DATE: **2/23/24** REG. #: **4958352** CAT: **1A 100%**

CED	BW	WW	YW	ADG	DMI	M	ME	HPG	CEM	ST	MARB	YG	CW	REA	FAT
11	-3.2	62	97	0.22	1.29	28	3	3	4	20	0.44	0.06	20	0.21	0.03
71%	25%	64%	68%	70%	94%	31%	42%	99%	96%	4%	45%	46%	64%	33%	76%

HRR Body Builder 4238 is a really complete 5L Body Builder 4434-68D son with low birth, good performance and a super disposition. His dam, HRR Lakota 982, is a favorite at Heart River Ranch because she gets it done without a lot of fanfare. This is her first bull with all of her daughters still in production. His maternal genes go back to HRR Lakota 699, HRR Lakota 430A, HRR Lakota 115 and MLK CRK Lakota 850, all top donor cows for Heart River Ranch. Keep the daughters on this bull as with time he should be a sire of really functional cows.



**HRR LAKOTA 982, DAM**



**HRR LAKOTA 699, MGD**

5L BLOCKADE 2218-30B  
**5L BODY BUILDER 4434-68D**  
 5L RED BIRD 411-4434

BIRNIE EXPRESS 353A  
**HRR LAKOTA 982**  
 HRR LAKOTA 699

- 5L DEFENDER 560-30Z
- 5L OPAL 656-2218
- 5L CRAFTSMAN 1134-150X
- 5L RED BIRD 1312-411
- MLK CRK EXPRESS 9127
- OTT-MONA-758-970
- RED HILL B571 JULIAN 84S
- HRR LAKOTA 430A

BW	76
ADJ WW	648
WR	105
ADJ YW	1082
YR	101
SCROTAL	34.4
DAM'S MPPA	99



**LOT 2**

**LOT 2**

## HRR NAVIGATOR 4236

ProS	HB	GM
114	55	59

35% 47% 31%

BIRTH DATE: **2/23/24** REG. #: **4958166** CAT: **1A 100%**

CED	BW	WW	YW	ADG	DMI	M	ME	HPG	CEM	ST	MARB	YG	CW	REA	FAT
15	-3.5	62	96	0.21	0.76	30	7	8	8	17	0.69	0.18	23	-0.11	0.04
23%	20%	65%	69%	71%	54%	15%	68%	99%	28%	19%	11%	94%	54%	90%	83%

HRR Navigator 4236 is a light birthweight Ridge Navigator 0039 son from a 10 year old dam, HRR Estonia 589 who posts a 103 MPPA. Nicely balanced performance on this spread bull. Five out of the last 7 bull calves of his dam have been in the sale. This is a really complete herd bull with longevity on both sides of his pedigree. The Ridge Navigator 0039 daughters in production are really nice uddered and making really good cows. Navigator was lost a couple winters ago so we only have semen to carry on his line. Don't miss this opportunity.



**RIDGE NAVIGATOR 0039, SIRE**



**HRR ESTONIA 589, DAM**

RIDGE COMPASS 7087  
**RIDGE NAVIGATOR 0039**  
 RIDGE HOB0 016-9027

BIRNIE EXPRESS 353A  
**HRR ESTONIA 589**  
 HRR MISSY 329

- RRA IMPACT 505
- RIDGE LILA 8132-0017
- 5L SIGNATURE 5615
- SIXL MS HOB0 016
- MLK CRK EXPRESS 9127
- OTT-MONA-758-970
- STEADFAST BOAZ T71
- HRR PRAIRIE 0141

BW	75
ADJ WW	643
WR	104
ADJ YW	1115
YR	104
SCROTAL	34.1
DAM'S MPPA	103





**LOT 3**

**LOT 3**

## HRR ROCKEFELLER 4249

ProS	HB	GM
147	82	65
5%	7%	22%

BIRTH DATE: **2/25/24** REG. #: **4958716** CAT: **1A 100%**

CED	BW	WW	YW	ADG	DMI	M	ME	HPG	CEM	ST	MARB	YG	CW	REA	FAT
10	0.8	79	122	0.27	1.07	33	0	14	5	18	0.71	-0.01	25	0.34	0.01
88%	90%	9%	16%	31%	84%	3%	29%	12%	89%	11%	9%	16%	43%	16%	39%

5L BOURNE 117-48A  
**DAHLKE ROCKEFELLER 009H**  
 DAHLKE MS HILTON 13F ET

RED HILL B571 JULIAN 84S  
**HRR LAKOTA 699**  
 HRR LAKOTA 430A

- 5L ADVANTAGE 3267-221Y
- 5L ROXIE 854-117
- BIEBER CL ATOMIC C218
- DAHLKE MS.HILTON 263C
- BECKTON JULIAN GG B571
- BECKTON BARMAID M554 CH
- 5L ADVOCATE 817-14W
- HRR LAKOTA 115

BW	ET
ADJ WW	692
WR	ET
ADJ YW	1233
YR	ET
SCROTAL	38.9
DAM'S MPPA	109

HRR Rockefeller 4249 is an ET mating out of our donor HRR Lakota 699 and Dahlke Rockefeller 009H. This super dark red bull was a standout since birth and should sire strong maternal and performance traits on a set of cows. 12 EPDs in the top 20% gives you a solid herd sire prospect. Some of our favorite cows in the herd come from HRR Lakota 699 who posts a 109 MPPA. Power herd bull prospect with a herd bull look.



**LOT 4**

**LOT 4**

## HRR FRANCHISE 4256

ProS	HB	GM
158	83	75
2%	6%	10%

BIRTH DATE: **2/26/24** REG. #: **4958254** CAT: **1A 100%**

CED	BW	WW	YW	ADG	DMI	M	ME	HPG	CEM	ST	MARB	YG	CW	REA	FAT
16	-3.7	60	97	0.23	0.53	29	5	11	10	19	0.80	0.17	23	-0.09	0.03
16%	18%	71%	68%	61%	27%	19%	60%	62%	7%	5%	5%	91%	54%	88%	74%

SPUR FRANCHISE OF GARTON  
**HRR FRANCHISE 8211**  
 HRR MONA 428

BUF CRK THE RIGHT KIND U199  
**HRR BLOCKANA 741**  
 HRR BLOCKANA 566

- SPUR FRANCHISE 7070
- H & H IRENE LASS 0135
- 5L LEGEND 1553-425V
- LEWIS MONA 108
- BUF CRK LANCER R017
- BUF CRK SHOSHONE R353
- HRR RAYMOND 975
- HRR BLOCKANA 959

BW	78
ADJ WW	661
WR	107
ADJ YW	1137
YR	107
SCROTAL	34.4
DAM'S MPPA	102

HRR Franchise 4256 is a HRR Franchise 8211 son that checks the boxes in a lot categories. He is dark red, smooth made and very attractive with EPD rankings in the top end across the board. This is the fourth sale bull in a row that his dam, HRR Blockana 741 has raised that has made it to the sale. She posts a 102 MPPA. A definite herd sire prospect.



**HRR LAKOTA 699, DAM**



**HRR LAKOTA 430A, MGD**



**HRR BLOCKANA 741, DAM**



**HRR BLOCKANA 566, MGD**





**LOT 5**



**HRR BLOCKANA 548, DAM**



**LOT 5**

## HRR BODY BUILDER 4299

ProS	HB	GM
67	31	36
94%	87%	81%

BIRTH DATE: **3/3/24** REG. #: **4958174** CAT: **2** **100%**

CED	BW	WW	YW	ADG	DMI	M	ME	HPG	CEM	ST	MARB	YG	CW	REA	FAT
7	1.0	79	121	0.26	1.30	26	7	8	0	17	0.47	0.06	21	0.10	0.02
98%	92%	10%	17%	35%	94%	49%	71%	97%	99%	18%	39%	47%	63%	55%	48%

5L BLOCKADE 2218-30B  
**5L BODY BUILDER 4434-68D**  
 5L RED BIRD 411-4434

RIDGE JULIAN S005-0099

**HRR BLOCKANA 548**  
 HRR BLOCKANA 1102

- 5L DEFENDER 560-30Z
- 5L OPAL 656-2218
- 5L CRAFTSMAN 1134-150X
- 5L RED BIRD 1312-411
- MUSHRUSH LTJULIAN LG S005
- RIDGE SARA F7-8025
- HRR KNIGHT 956
- FEDDES BLOCKANA 166

<b>BW</b>	102
<b>ADJ WW</b>	715
<b>WR</b>	116
<b>ADJ YW</b>	1202
<b>YR</b>	113
<b>SCROTAL</b>	39.1
<b>DAM'S MPPA</b>	103

*HRR Body Builder 4299 is a 5L Body Builder 4434-68D son out of a 10 year old dam, HRR Blockana 548, who is still getting it done with a 116 weaning ratio on this calf. This bull went on to gain well and post a yearling weight over 1200 pounds. His dam, HRR Blockana 548, has pretty much done her job right with a 103 MPPA and a lifetime calving interval of 363 days.*



**LOT 6**



**HRR MEG 8107, DAM**



**LOT 6**

## HRR RAD 4313

ProS	HB	GM
127	65	62
19%	26%	27%

BIRTH DATE: **3/4/24** REG. #: **4958308** CAT: **1A** **100%**

CED	BW	WW	YW	ADG	DMI	M	ME	HPG	CEM	ST	MARB	YG	CW	REA	FAT
9	1.7	86	135	0.31	1.22	21	0	14	5	15	0.54	-0.01	33	0.27	-0.01
92%	96%	3%	5%	13%	92%	91%	31%	11%	87%	48%	26%	15%	18%	24%	4%

5L DEFENDER 560-30Z  
**RIDGE RAD 9075**  
 RIDGE CASEY 978-8034

5L ADVANTAGE 3267-221Y

**HRR MEG 8107**  
 RED BAR-E-L BULL MEG 985W

- 5L ADVOCATE 817-14W
- 5L BLACK ADINA 525-560
- 5L GRAND EXPRESS 453-5655
- OTT-CASEY-F412-978
- BUF CRK THE RIGHT KIND U199
- 5L ADINA 195-3267
- RED TER-RON BLITZ 611N
- RED BAR-E-L MEG 85N

<b>BW</b>	97
<b>ADJ WW</b>	713
<b>WR</b>	116
<b>ADJ YW</b>	1252
<b>YR</b>	117
<b>SCROTAL</b>	35.1
<b>DAM'S MPPA</b>	103

*HRR Rad 4313 is one of the top weaning and yearling weight performance bulls in this sale and a 3/4 brother to Lot 13, HRR Rad 4321. There should be plenty gas in the tank to raise some heavy steers with really good maternal dam, HRR Meg 8107 and granddam, Red BAR-E-L Bull Meg 985W in the pedigree to go on with the daughters.*



**LOT 7**



**HRR BLOCKANA 013, DAM**



**LOT 7**

## HRR MAX 4319

ProS	HB	GM
103	68	35
51%	21%	81%

BIRTH DATE: **3/5/24** REG. #: **4958704** CAT: **1A** **100%**

CED	BW	WW	YW	ADG	DMI	M	ME	HPG	CEM	ST	MARB	YG	CW	REA	FAT
11	0.4	60	96	0.22	0.73	28	-6	10	5	17	0.32	0.12	20	-0.06	0.02
74%	87%	70%	69%	65%	50%	31%	15%	72%	81%	20%	78%	77%	65%	85%	59%

RED ML MAX 862U  
**RED FLYING K MAX 159Y**  
 RED FLYING K ANITA 764T

STEADFAST BOAZ T71

**HRR BLOCKANA 013**  
 HRR BLOCKANA 845

- RED CROWFOOT 6253S
- RED BAR-X MISS LINETT 151K
- RED FLYING K ACE 9R
- RED FLYING K ANEXA 4M
- MUSHRUSH ROCKET P016
- MUSHRUSH LANA LT R040
- SHOCO DATA
- FEDDES BLOCKANA 940

<b>BW</b>	ET
<b>ADJ WW</b>	683
<b>WR</b>	ET
<b>ADJ YW</b>	1264
<b>YR</b>	ET
<b>SCROTAL</b>	37.1
<b>DAM'S MPPA</b>	107

*HRR Max 4319 is one of the top performing bulls out of one of our top donors. This is one of the bests bulls we have raised out of this mating. We love the RED Flying K Max 159Y daughters in production and this bull should come with a little more performance. He should sire excellent feet, disposition and phenotype. Definetely the herd bull type. Out of any RED Flying K Max 159Y sons that we have raised, this one seems to be on track to be a spittin image of his sire.*





**LOT 8**

**HRR MONA 929, DAM**



**LOT 8**

## HRR BODY BUILDER 4231

ProS	HB	GM
93	66	27

BIRTH DATE: **2/22/24** REG. #: **4958374** CAT: **1A 100%**

66%	24%	92%
-----	-----	-----

CED	BW	WW	YW	ADG	DMI	M	ME	HPG	CEM	ST	MARB	YG	CW	REA	FAT
15	-2.3	73	107	0.21	0.93	27	2	5	7	19	0.35	0.12	22	-0.05	0.02
22%	40%	23%	43%	71%	73%	36%	40%	99%	50%	5%	72%	78%	57%	83%	57%

5L BLOCKADE 2218-30B  
**5L BODY BUILDER 4434-68D**  
 5L RED BIRD 411-4434

HRR EXPRESS 5142  
**HRR MONA 929**  
 HRR MONA DIVA 797

- 5L DEFENDER 560-30Z
- 5L OPAL 656-2218
- 5L CRAFTSMAN 1134-150X
- 5L RED BIRD 1312-411
- MLK CRK EXPRESS 9127
- HRR LAKOTA 115
- 5L ADVANTAGE 3267-221Y
- OTT-MONA-758-970

<b>BW</b>	73
<b>ADJ WW</b>	698
<b>WR</b>	113
<b>ADJ YW</b>	1193
<b>YR</b>	112
<b>SCROTAL</b>	33.8
<b>DAM'S MPPA</b>	105

*HRR Body Builder 4231 is an interesting 5L Body Builder 4434-68D son with a low birth weight and a ton of body. This bull is super efficient and looked the part of being an easy keeper since he was a calf. He goes back to the good OTT Mona 758-970 cow on the dam side. A moderate frame with above average performance and stacked with proven maternal lines in this pedigree.*



**LOT 9**

**HRR COLLEEN 308, MGD**



**LOT 9**

## HRR ROCKEFELLER 4216

ProS	HB	GM
147	83	64

BIRTH DATE: **2/16/24** REG. #: **4958578** CAT: **1A 100%**

5%	6%	23%
----	----	-----

CED	BW	WW	YW	ADG	DMI	M	ME	HPG	CEM	ST	MARB	YG	CW	REA	FAT
17	-3.9	65	101	0.22	0.52	30	9	13	10	19	0.62	0.01	20	0.08	0.00
7%	15%	52%	59%	66%	26%	14%	79%	33%	4%	6%	17%	23%	64%	59%	11%

5L BOURNE 117-48A  
**DAHLKE ROCKEFELLER 009H**  
 DAHLKE MS HILTON 13F ET

RED RMJ REDMAN 1T  
**HRR COLLEEN 250**  
 HRR COLLEEN 308

- 5L ADVANTAGE 3267-221Y
- 5L ROXIE 854-117
- BIEBER CL ATOMIC C218
- DAHLKE MS.HILTON 263C
- 5L NORSEMAN KING 2291
- CROWFOOT KURUBA 4033P
- MLK CRK EXPRESS 9127
- HRR COLLEEN 155

<b>BW</b>	77
<b>ADJ WW</b>	684
<b>WR</b>	111
<b>ADJ YW</b>	1216
<b>YR</b>	114
<b>SCROTAL</b>	34.9
<b>DAM'S MPPA</b>	104

*HRR Rockefeller 4216 is a heifer bull – herd bull prospect out of Dahlke Rockefeller 009H. He has a 111 WW Ratio and continued on to post a 114 YW ratio at yearling time. He goes back to Red RMJ Redman 1T and our donor dam, HRR Colleen 308 on the cow side in his young two year old dam, HRR Colleen 250. We expect good things from this rascal. This bull has a number of EPDs ranking in the top end of the breed.*



**LOT 10**

**HRR BLOCKANA 939, DAM**



**LOT 10**

## HRR LANCASTER 4279

ProS	HB	GM
147	95	52

BIRTH DATE: **2/29/24** REG. #: **4958376** CAT: **1A 100%**

5%	2%	44%
----	----	-----

CED	BW	WW	YW	ADG	DMI	M	ME	HPG	CEM	ST	MARB	YG	CW	REA	FAT
12	-0.6	64	98	0.22	0.47	24	0	13	9	19	0.54	0.02	15	0.12	0.01
59%	74%	58%	65%	70%	21%	65%	30%	25%	14%	5%	26%	25%	81%	50%	39%

RED MINBURN COPENHAGEN 3Y  
**HRR COPENHAGEN 2265**  
 RED BAR-E-L BULL MEG 985W

LOOSLI RIGHT KIND 205  
**HRR BLOCKANA 939**  
 HRR BLOCKANA 959

- RED RMJ REDMAN 1T
- MINBURN MAY 112M
- RED TER-RON BLITZ 611N
- RED BAR-E-L MEG 85N
- BUF CRK THE RIGHT KIND U199
- MISS LL PACKER 005
- SHOCO DATA
- FEDDES BLOCKANA 166

<b>BW</b>	86
<b>ADJ WW</b>	604
<b>WR</b>	98
<b>ADJ YW</b>	1126
<b>YR</b>	105
<b>SCROTAL</b>	37.5
<b>DAM'S MPPA</b>	98

*HRR Lancaster 4279 brings the top Heart River Ranch Blockana and Meg cow families together in a moderate performance package. This is thick topped bull that ranks in the top 10% in the ProS and HB and Stay EPDs. The HRR Copenhagen 2265 sons and daughters are coming to the top of the herd. You will like their feet and phenotype.*





**LOT 11**



**MLK CRK LAKOTA 2115, DAM**



**LOT 11**

## HRR ADMIRAL 4255

ProS	HB	GM
144	82	62

BIRTH DATE: **2/26/24** REG. #: **4958680** CAT: **1A 100%**

6%	7%	26%	CED	BW	WW	YW	ADG	DMI	M	ME	HPG	CEM	ST	MARB	YG	CW	REA	FAT													
17	-3.6	53	94	0.26	1.40	27	0	15	8	18	0.61	0.24	31	0.02	0.06	8%	18%	90%	73%	40%	97%	35%	29%	5%	34%	11%	18%	99%	22%	71%	99%

5L LEGEND 1553-425V  
**RIDGE ADMIRAL 3411**  
 RIDGE GRANDIOSE 629-1112  
 MLK CRK EXPRESS 9141  
**MLK CRK LAKOTA 2115**  
 MLK CRK LAKOTA 932

5L LAKOTA LEGEND 7074  
 5L HAZEL 45L-1553  
 MLK CRK EXPRESS 9127  
 RIDGE GRANDIOSE 435-629  
 5L GRAND EXPRESS 453-5655  
 MLK CRK SHEBA 079  
 RED CROWFOOT OLE'S OSCAR  
 MLK CRK LAKOTA 330

BW	ET
ADJ WW	613
WR	ET
ADJ YW	1105
YR	ET
SCROTAL	36.4
DAM'S MPPA	103

*HRR Admiral 4255 was a noticable calf this summer and just kept getting better. Here is a different pedigree for our program, his sire, Ridge Admiral 3411 does an impeccable job raising daughters and coming from the donor cow, MLK Lakota 2115 will be a plus. His EPD profile is balanced across the board and looks to be a bull that could be used successfully on heifers and then go on to cows.*



**LOT 12**



**HRR FREYJA 959, DAM**



**LOT 12**

## HRR RAD 4311

ProS	HB	GM
106	56	51

BIRTH DATE: **3/4/24** REG. #: **4958324** CAT: **1A 100%**

46%	45%	48%	CED	BW	WW	YW	ADG	DMI	M	ME	HPG	CEM	ST	MARB	YG	CW	REA	FAT													
12	-3.1	64	103	0.24	0.69	27	1	10	6	16	0.47	0.10	21	0.13	0.04	63%	26%	56%	54%	51%	45%	36%	34%	85%	64%	34%	39%	67%	62%	48%	83%

5L DEFENDER 560-30Z  
**RIDGE RAD 9075**  
 RIDGE CASEY 978-8034  
 LOOSLI RIGHT KIND 205  
**HRR FREYJA 959**  
 HRR FREYJA 284

5L ADVOCATE 817-14W  
 5L BLACK ADINA 525-560  
 5L GRAND EXPRESS 453-5655  
 OTT-CASEY-F412-978  
 BUF CRK THE RIGHT KIND U199  
 MISS LL PACKER 005  
 RED RMJ REDMAN 1T  
 HRR FREYJA 308

BW	95
ADJ WW	709
WR	115
ADJ YW	1202
YR	113
SCROTAL	39.1
DAM'S MPPA	106

*One of the highest performing bulls in the sale with a maternal line of good cows built into the pedigree. This is dark red stylish, big scrotal bull that should make some great daughters. His dam, HRR Freyja 959 has a 106 MPPA.*



**LOT 13**



**HRR MEG 9178, DAM**



**LOT 13**

## HRR RAD 4321

ProS	HB	GM
66	33	33

BIRTH DATE: **3/5/24** REG. #: **4958380** CAT: **1A 100%**

94%	85%	85%	CED	BW	WW	YW	ADG	DMI	M	ME	HPG	CEM	ST	MARB	YG	CW	REA	FAT													
6	2.2	67	102	0.22	0.95	24	-2	13	3	12	0.31	0.00	22	0.12	-0.01	99%	97%	44%	56%	69%	75%	72%	24%	20%	98%	82%	79%	17%	58%	50%	6%

5L DEFENDER 560-30Z  
**RIDGE RAD 9075**  
 RIDGE CASEY 978-8034  
 RED FLYING K MAX 159Y  
**HRR MEG 9178**  
 RED BAR-E-L BULL MEG 985W

5L ADVOCATE 817-14W  
 5L BLACK ADINA 525-560  
 5L GRAND EXPRESS 453-5655  
 OTT-CASEY-F412-978  
 RED ML MAX 862U  
 RED FLYING K ANITA 764T  
 RED TER-RON BLITZ 611N  
 RED BAR-E-L MEG 85N

BW	101
ADJ WW	705
WR	114
ADJ YW	1212
YR	114
SCROTAL	37.1
DAM'S MPPA	103

*HRR Rad 4321 is one of the really well made, top performing bulls in the sale. He is a son out of Ridge RAD 9075 and goes back to the powerful RED Bar-E-L Bull Meg 985 and maternal daughter of RED Flying K Max 159Y, his dam HRR Meg 9178. HRR Rad 4321 had a WWR and YWR of 114. He should sire some heavy steers and put some powerful heifers in the replacement pen.*





**LOT 14**

**HRR BLOCKANA 548, MGD**



**LOT 14**

## HRR ROCKEFELLER 4200

ProS	HB	GM
132	90	42
14%	3%	69%

BIRTH DATE: **2/5/24** REG. #: **4958594** CAT: **1A 100%**

CE	BW	WW	YW	ADG	DMI	M	ME	HPG	CEM	ST	MARB	YG	CW	REA	FAT
17	-1.9	80	118	0.24	0.87	31	5	17	10	17	0.55	0.17	24	-0.13	0.03
9%	48%	8%	22%	52%	66%	10%	57%	1%	9%	22%	25%	91%	51%	92%	65%

5L BOURNE 117-48A  
**DAHLKE ROCKEFELLER 009H**  
DAHLKE MS HILTON 13F ET

HRR EXPRESS 5142  
**HRR BLOCKANA 298**  
HRR BLOCKANA 548

- 5L ADVANTAGE 3267-221Y
- 5L ROXIE 854-117
- BIEBER CL ATOMIC C218
- DAHLKE MS HILTON 263C
- MLK CRK EXPRESS 9127
- HRR LAKOTA 115
- RIDGE JULIAN S005-0099
- HRR BLOCKANA 1102

<b>BW</b>	72
<b>ADJ WW</b>	650
<b>WR</b>	105
<b>ADJ YW</b>	1174
<b>YR</b>	110
<b>SCROTAL</b>	38.2
<b>DAM'S MPPA</b>	102

*HRR Rockefeller 4200 was the first Dahlke Rockefeller 009H son to hit the ground last spring. He started with a 72# birth weight and progressed to a 105 WW ratio and a 110 YW ratio out of a two-year-old dam who is a daughter of HRR Express 5142. Surely a dark red standout to consider for heifers with some added performance and usable EPDs. His dam, HRR Blockana 298 is the daughter to the dam of lot 5, HRR Bockana 548.*



**LOT 15**

**HRR MISS JULIANN 8105, DAM**



**LOT 15**

## HRR JULIAN 4233

ProS	HB	GM
106	89	17
47%	3%	98%

BIRTH DATE: **2/22/24** REG. #: **4958306** CAT: **1A 100%**

CE	BW	WW	YW	ADG	DMI	M	ME	HPG	CEM	ST	MARB	YG	CW	REA	FAT
12	-1.7	62	88	0.17	0.05	27	-5	16	7	17	0.19	-0.02	7	0.10	0.01
69%	52%	65%	82%	92%	2%	41%	17%	3%	57%	16%	95%	14%	94%	55%	31%

BECKTON JULIAN GG B571  
**RED HILL B571 JULIAN 84S**  
BECKTON BARMAID M554 CH

5L ADVANTAGE 3267-221Y  
**HRR MISS JULIANN 8105**  
DR 21R JULIAN W100

- BKT JULIAN 7526 G
- BKT MARTA 9A13 JL
- BECKTON CHAMP R3 H338
- BECKTON BARMAID H031 HR
- BUF CRK THE RIGHT KIND U199
- 5L ADINA 195-3267
- MLK CRK EPIC 7160
- HCK MISS JULIAN 21R

<b>BW</b>	92
<b>ADJ WW</b>	657
<b>WR</b>	107
<b>ADJ YW</b>	1103
<b>YR</b>	103
<b>SCROTAL</b>	37.8
<b>DAM'S MPPA</b>	102

*A Red Hill B571 Julian 84S son with performance across the board at weaning and yearling and good HB and Stay EPDs. Old school foundation genetics make up the base pedigree of this bull bringing back the basics of longevity and maternal productivity.*



**LOT 16**

**HRR LAKOTA 224, DAM**



**LOT 16**

## HRR XPRESS 4209

ProS	HB	GM
105	68	38
48%	22%	77%

BIRTH DATE: **2/13/24** REG. #: **4958572** CAT: **1A 100%**

CE	BW	WW	YW	ADG	DMI	M	ME	HPG	CEM	ST	MARB	YG	CW	REA	FAT
14	-2.2	75	105	0.19	0.65	30	-1	10	9	15	0.46	0.07	24	0.13	0.02
30%	42%	17%	48%	85%	40%	13%	27%	84%	15%	40%	41%	49%	46%	48%	48%

MLK CRK EXPRESS 9127  
**HRR EXPRESS 5142**  
HRR LAKOTA 115

RIDGE RAD 9075  
**HRR LAKOTA 224**  
HRR LAKOTA 053

- 5L GRAND EXPRESS 453-5655
- MLK CRK SHEBA 043
- SHOCO DATA
- MLK CRK LAKOTA 850
- 5L DEFENDER 560-30Z
- RIDGE CASEY 978-8034
- WFL MERLIN 018A
- HRR LAKOTA 430A

<b>BW</b>	76
<b>ADJ WW</b>	707
<b>WR</b>	115
<b>ADJ YW</b>	1150
<b>YR</b>	108
<b>SCROTAL</b>	34.5
<b>DAM'S MPPA</b>	106

*HRR Express 4209 is a HRR Express 5142 son that lines up the HRR Lakota 115 cow 2x in his pedigree. Moderate calving ease and a 115 WW ratio, this is a possible heifer bull that should provide some added growth at weaning and yearling. An added plus is his smooth, deep made phenotype. His dam, granddam and great granddam are still in production at HRR. His granddam, HRR Lakota 053 is the mother to Lot 19, another stand out in this sale.*





**LOT 17**



**HRR LAKOTA 917, DAM**



**LOT 17**

## HRR NAVIGATOR 4242

ProS	HB	GM
145	84	61

BIRTH DATE: **2/24/24** REG. #: **4958354** CAT: **1A 100%**

CED	BW	WW	YW	ADG	DMI	M	ME	HPG	CEM	ST	MARB	YG	CW	REA	FAT
12	-0.2	75	118	0.27	1.25	27	6	15	7	19	0.52	-0.02	34	0.32	-0.01
57%	80%	17%	22%	32%	93%	38%	62%	11%	47%	8%	30%	15%	15%	19%	6%

RIDGE COMPASS 7087  
**RIDGE NAVIGATOR 0039**  
 RIDGE HOBO 016-9027

RIDGE PRAGMATIC 6098  
**HRR LAKOTA 917**  
 HRR LAKOTA 710

RRA IMPACT 505  
 RIDGE LILA 8132-0017  
 5L SIGNATURE 5615  
 SIXL MS HOBO 016  
 5L TOPGUN 560-658  
 RIDGE SHEILA 009-2088  
 BUF CRK THE RIGHT KIND U199  
 HRR LAKOTA 521

<b>BW</b>	88
<b>ADJ WW</b>	679
<b>WR</b>	110
<b>ADJ YW</b>	1080
<b>YR</b>	101
<b>SCROTAL</b>	34.3
<b>DAM'S MPPA</b>	104

*HRR Navigator 4242 is a performance bull that is recommended for cows. His dam, HRR Lakota 917 has a 103 MPPA. She is a smooth made, good feminine fronted female that consistently brings a good calf every year.*



**LOT 18**



**HRR SHEBA 926, DAM**



**LOT 18**

## HRR JULIAN 4225

ProS	HB	GM
107	106	1

BIRTH DATE: **2/20/24** REG. #: **4958322** CAT: **1A 100%**

CED	BW	WW	YW	ADG	DMI	M	ME	HPG	CEM	ST	MARB	YG	CW	REA	FAT
17	-3.9	61	87	0.16	0.45	28	-7	15	9	20	0.22	0.03	-1	-0.02	0.03
7%	15%	69%	84%	93%	20%	28%	13%	6%	18%	4%	92%	31%	99%	79%	70%

BECKTON JULIAN GG B571  
**RED HILL B571 JULIAN 84S**  
 BECKTON BARMAID M554 CH

RIDGE PROVISION 6013  
**HRR SHEBA 926**  
 HRR SHEBA 2132

BKT JULIAN 7526 G  
 BKT MARTA 9A13 JL  
 BECKTON CHAMP R3 H338  
 BECKTON BARMAID H031 HR  
 5L ADVANTAGE 3267-221Y  
 RIDGE MONA 8162-2057  
 MUSHRUSH LTJULIAN LG S005  
 HRR SHEBA 0127

<b>BW</b>	72
<b>ADJ WW</b>	625
<b>WR</b>	101
<b>ADJ YW</b>	1024
<b>YR</b>	96
<b>SCROTAL</b>	33.7
<b>DAM'S MPPA</b>	102

*Here is a top heifer bull prospect with top calving ease EPDs. He goes back to our donor cow, HRR Sheba 2132 that is still in production at HRR at 13 years of age and a dam, HRR Sheba 926 that has a 102 MPPA. Combine this with his sire, Red Hill B571 Julian 84s and you have a cow making bull.*



**LOT 19**



**HRR LAKOTA 136, DAM**



**LOT 19**

## HRR MECHANIC 4275

ProS	HB	GM
109	54	55

BIRTH DATE: **2/29/24** REG. #: **4958496** CAT: **1A 100%**

CED	BW	WW	YW	ADG	DMI	M	ME	HPG	CEM	ST	MARB	YG	CW	REA	FAT
19	-4.0	65	104	0.25	0.88	28	0	10	10	14	0.58	0.00	15	0.25	0.02
2%	14%	55%	50%	46%	68%	32%	30%	86%	7%	58%	21%	20%	79%	27%	61%

JACOBSON MECHANIC 9118  
**JACOBSON MECHANIC 1033**  
 JACOBSON QUEEN 8085

RIDGE RAD 9075  
**HRR LAKOTA 136**  
 HRR LAKOTA 982

5L CRAFTSMAN 2393-13C  
 JACOBSON SADIE 7122  
 5L BOURNE 117-48A  
 FOREVER QUEEN 948-2657  
 5L DEFENDER 560-30Z  
 RIDGE CASEY 978-8034  
 BIRNIE EXPRESS 353A  
 HRR LAKOTA 699

<b>BW</b>	70
<b>ADJ WW</b>	633
<b>WR</b>	103
<b>ADJ YW</b>	1103
<b>YR</b>	103
<b>SCROTAL</b>	34.0
<b>DAM'S MPPA</b>	102

*HRR Mechanic 4275 is a calving ease heifer bull with above average performance from a young dam, HRR Lakota 136 that is a descendent of HRR Lakota 115, one of the top donor cows at Heart River Ranch. His maternal granddam, HRR Lakota 982 is the dam to Lot 1, HRR Body Builder 4238. Another heifer bull to keep daughters from.*





**LOT 20**

**HRR BANA 855, DAM**



**LOT 20**

## HRR RAD 4300

ProS	HB	GM
97	47	50

BIRTH DATE: **3/3/24** REG. #: **4958292** CAT: **1A 100%**

60%	63%	50%	CE	BW	WW	YW	ADG	DMI	M	ME	HPG	CEM	ST	MARB	YG	CW	REA	FAT													
10	-1.1	69	101	0.20	0.49	27	-1	12	5	14	0.50	-0.07	17	0.17	-0.02	86%	63%	37%	58%	78%	23%	36%	25%	49%	91%	61%	33%	4%	73%	40%	2%

5L DEFENDER 560-30Z  
**RIDGE RAD 9075**  
 RIDGE CASEY 978-8034

BUF CRK LANCER-F L297

**HRR BANA 855**  
 HRR BANA 620

- 5L ADVOCATE 817-14W
- 5L BLACK ADINA 525-560
- 5L GRAND EXPRESS 453-5655
- OTT-CASEY-F412-978
- BECKTON LANCER F442 T
- BUF CRK LASS 4158
- SHOCO DATA
- HRR BANA 313

<b>BW</b>	90
<b>ADJ WW</b>	695
<b>WR</b>	113
<b>ADJ YW</b>	1199
<b>YR</b>	112
<b>SCROTAL</b>	38.1
<b>DAM'S MPPA</b>	106

*HRR Rad 4300 is a Ridge Rad 9075 son that did a nice job at the scale. His dam, HRR Bana 855 comes from a foundational cow line at HRR. A solid performance bull.*



**LOT 21**

**HRR INATEXI 118, DAM**



**LOT 21**

## HRR MECHANIC 4316

ProS	HB	GM
146	101	45

BIRTH DATE: **3/1/24** REG. #: **4958476** CAT: **1A 100%**

5%	1%	62%	CE	BW	WW	YW	ADG	DMI	M	ME	HPG	CEM	ST	MARB	YG	CW	REA	FAT													
18	-5.6	49	82	0.21	0.71	24	-5	11	9	22	0.46	0.22	18	-0.10	0.06	5%	3%	95%	89%	73%	47%	71%	16%	56%	12%	1%	41%	98%	72%	89%	98%

JACOBSON MECHANIC 9118  
**JACOBSON MECHANIC 1033**  
 JACOBSON QUEEN 8085

RED U-2 AUTHENTIC 139A

**HRR INATEXI 118**  
 HRR INATEXI 568

- 5L CRAFTSMAN 2393-13C
- JACOBSON SADIE 7122
- 5L BOURNE 117-48A
- FOREVER QUEEN 948-2657
- RED MINBURN COPENHAGEN 3Y
- RED U-2 STORMY 7202T
- HRR RAYMOND 975
- HRR HI TEX 046

<b>BW</b>	72
<b>ADJ WW</b>	639
<b>WR</b>	104
<b>ADJ YW</b>	1177
<b>YR</b>	110
<b>SCROTAL</b>	32.5
<b>DAM'S MPPA</b>	100

*HRR Mechanic 4316 is a top heifer bull prospect with one of the higher CEDs in the sale and still went on to post a 104 WWR and a 110 YWR. This bull has a high standard for EPDs in the maternal area across the board.*



**LOT 22**

**HRR LAKOTA 053, DAM**



**LOT 22**

## HRR MECHANIC 4337

ProS	HB	GM
128	59	69

BIRTH DATE: **3/9/24** REG. #: **4958412** CAT: **1A 100%**

17%	39%	16%	CE	BW	WW	YW	ADG	DMI	M	ME	HPG	CEM	ST	MARB	YG	CW	REA	FAT													
14	-4.1	72	121	0.31	1.29	30	2	12	8	15	0.55	0.17	41	0.34	0.06	37%	13%	26%	18%	12%	94%	13%	40%	50%	37%	48%	25%	92%	6%	16%	98%

JACOBSON MECHANIC 9118  
**JACOBSON MECHANIC 1033**  
 JACOBSON QUEEN 8085

WFL MERLIN 018A

**HRR LAKOTA 053**  
 HRR LAKOTA 430A

- 5L CRAFTSMAN 2393-13C
- JACOBSON SADIE 7122
- 5L BOURNE 117-48A
- FOREVER QUEEN 948-2657
- LJC MERLIN T179
- WFL COMMITMENT 042Y
- 5L ADVOCATE 817-14W
- HRR LAKOTA 115

<b>BW</b>	76
<b>ADJ WW</b>	679
<b>WR</b>	110
<b>ADJ YW</b>	1207
<b>YR</b>	113
<b>SCROTAL</b>	37.3
<b>DAM'S MPPA</b>	105

*HRR Mechanic 4337 is one of the really good spread bulls from the Jacobson Mechanic 1033. He will be usable on heifers and go on to post excellent performance given his 110 WR and 113 YW ratio. His dam, HRR Lakota 053 is doing a really good job but it should be no surprise as her dam, HRR Lakota 430A, granddam, HRR Lakota 115 are well documented donors at HRR. Don't miss out of this really complete herd bull.*





**LOT 23**



**HRR MISSY 742, DAM**



**LOT 23**

## HRR TENOR 4352

ProS HB GM

**79 33 46**

84% 85% 60%

BIRTH DATE: **3/16/24** REG. #: **4958222** CAT: **1A 100%**

CE	D	BW	WW	YW	ADG	DMI	M	ME	HPG	CEM	ST	MARB	YG	CW	REA	FAT
<b>6</b>	<b>-0.1</b>	<b>75</b>	<b>120</b>	<b>0.28</b>	<b>1.21</b>	<b>26</b>	<b>11</b>	<b>12</b>	<b>2</b>	<b>15</b>	<b>0.37</b>	<b>0.04</b>	<b>30</b>	<b>0.34</b>	<b>0.02</b>	

99% 81% 17% 18% 23% 91% 50% 86% 33% 99% 47% 68% 35% 25% 16% 63%

5L BODY BUILDER 4434-68D  
**RIDGE DIMENSION 1010**  
RIDGE CASEY 9071-4050

BECKTON EPIC R397 K  
**HRR MISSY 742**  
HRR MISSY 055

5L BLOCKADE 2218-30B  
5L RED BIRD 411-4434  
5L LEGEND 1553-425V  
RIDGE CASEY 155-9071  
BECKTON EPIC K F075  
BECKTON KIT F468 JL  
RED YY RED KNIGHT 640F  
HOLDEN MISSY 622

<b>BW</b>	<b>88</b>
<b>ADJ WW</b>	<b>729</b>
<b>WR</b>	<b>118</b>
<b>ADJ YW</b>	<b>1197</b>
<b>YR</b>	<b>112</b>
<b>SCROTAL</b>	<b>36.5</b>
<b>DAM'S MPPA</b>	<b>102</b>

HRR Tenor 4352 is a Ridge Dimension 1010 son with really good performance at weaning and yearling. We have retained quite a few Ridge Dimension 1010 daughters in the herd and like how they are coming along. His dam, HRR Missy 742 has a 102 MPPA on 6 calves.



**LOT 24**



**1MJM LEXI 904, DAM**



**LOT 24**

## HRR REDMANS LEGEND 4366

ProS HB GM

**94 56 38**

65% 45% 77%

BIRTH DATE: **3/24/24** REG. #: **4958310** CAT: **1A 100%**

CE	D	BW	WW	YW	ADG	DMI	M	ME	HPG	CEM	ST	MARB	YG	CW	REA	FAT
<b>7</b>	<b>-1.1</b>	<b>60</b>	<b>96</b>	<b>0.22</b>	<b>0.98</b>	<b>28</b>	<b>-1</b>	<b>10</b>	<b>3</b>	<b>17</b>	<b>0.43</b>	<b>0.03</b>	<b>14</b>	<b>0.08</b>	<b>0.01</b>	

97% 63% 70% 69% 65% 77% 28% 25% 73% 97% 20% 47% 31% 81% 59% 39%

RED RMJ REDMAN 1T  
**RIDGE REDMANS LEGEND 1015**  
RIDGE MONA 2057-4412

DKK NEW DIRECTION 7050  
**1MJM LEXI 904**  
RED SADIE 7117

5L NORSEMAN KING 2291  
CROWFOOT KURUBA 4033P  
5L LEGEND 1553-425V  
RIDGE MONA 8162-2057  
ANDRAS NEW DIRECTION R240  
DKK LAKME 3111  
HRR EXPRESS 5161  
RED HOLLY 8493

<b>BW</b>	<b>104</b>
<b>ADJ WW</b>	<b>761</b>
<b>WR</b>	<b>123</b>
<b>ADJ YW</b>	<b>1208</b>
<b>YR</b>	<b>113</b>
<b>SCROTAL</b>	<b>37.3</b>
<b>DAM'S MPPA</b>	<b>111</b>

HRR Redmans Legend 4366 is a young dark red bull with an attractive profile that performed well. We purchased his dam, 1MJM Lexi 904 in the NILE and she has done a nice job raising calves posting a 111 MPPA. Recommended performance bull to use on cows.



**LOT 25**



**HRR LAKOTA 115, DAM**



**LOT 25**

## HRR PRAGMATIC 4234

ProS HB GM

**140 112 29**

8% 1% 90%

BIRTH DATE: **2/22/24** REG. #: **4958722** CAT: **1A 100%**

CE	D	BW	WW	YW	ADG	DMI	M	ME	HPG	CEM	ST	MARB	YG	CW	REA	FAT
<b>16</b>	<b>-4.2</b>	<b>60</b>	<b>91</b>	<b>0.19</b>	<b>0.69</b>	<b>30</b>	<b>6</b>	<b>18</b>	<b>10</b>	<b>21</b>	<b>0.37</b>	<b>0.11</b>	<b>15</b>	<b>-0.23</b>	<b>0.00</b>	

12% 12% 70% 78% 83% 45% 15% 65% 1% 4% 1% 68% 70% 81% 97% 24%

5L TOPGUN 560-65B  
**RIDGE PRAGMATIC 6098**  
RIDGE SHEILA 009-2088

SHOCO DATA  
**HRR LAKOTA 115**  
MLK CRK LAKOTA 850

5L ADVANTAGE 3267-221Y  
5L BLACK ADINA 525-560  
5L LEGEND 1553-425V  
RIDGE SHEILA 009  
SHOCO SIR ROBIN  
VDAR BLACKANA 303  
GLACIER CUB 446  
MLK CRK LAKOTA 651

<b>BW</b>	<b>ET</b>
<b>ADJ WW</b>	<b>628</b>
<b>WR</b>	<b>ET</b>
<b>ADJ YW</b>	<b>1091</b>
<b>YR</b>	<b>ET</b>
<b>SCROTAL</b>	<b>34.8</b>
<b>DAM'S MPPA</b>	<b>104</b>

This may be the last opportunity to buy a direct son out of the prolific and powerful, HRR Lakota 115 donor. We have used her sons and there are many other of her sons across the country in use. We love the tidy udders of the Ridge Pragmatic 6098 daughters. Here is a sleep-all-night calving ease bull for heifers, don't let this one slip away if you want one of the top maternal heifer bulls. Top 1% in Stay, HPG, HB, top 10% in ProS, CEM.





**LOT 26**

**HRR STARLIGHT 610, DAM**



**LOT 26**

## HRR LANCASTER 4294

ProS	HB	GM
103	58	45

BIRTH DATE: **3/2/24** REG. #: **4958198** CAT: **1A 100%**

52%	41%	64%	CE	D	W	Y	ADG	DMI	M	ME	HPG	CEM	ST	MARB	YG	CW	REA	FAT													
7	1.4	73	110	0.23	0.84	24	1	13	3	16	0.37	0.00	28	0.14	-0.01	98%	94%	24%	37%	56%	63%	65%	33%	25%	97%	30%	68%	19%	33%	46%	4%

RED MINBURN COPENHAGEN 3Y  
**HRR COPENHAGEN 2265**  
RED BAR-E-L BULL MEG 985W

RED HILL B571 JULIAN 84S  
**HRR STARLIGHT 610**  
HRR STARLIGHT 419

RED RMJ REDMAN 1T  
MINBURN MAY 112M  
RED TER-RON BLITZ 611N  
RED BAR-E-L MEG 85N  
BECKTON JULIAN GG B571  
BECKTON BARMAID M554 CH  
LOOSLI RIGHT KIND 205  
HRR STARLIGHT 958

BW	100
ADJ WW	672
WR	109
ADJ YW	1095
YR	103
SCROTAL	36.5
DAM'S MPPA	102

A standout bull from HRR Copenhagen 2265 bull and the really good dam, HRR Starlight 610. Both sides of the pedigree have moderate made high volume dams and he should sire some solid daughters to move on with.



**LOT 27**

**HRR BLOCKANA 1152, DAM**



**LOT 27**

## HRR AVALANCHE 4343

ProS	HB	GM
122	90	32

BIRTH DATE: **3/11/24** REG. #: **4958534** CAT: **2 100%**

24%	3%	86%	CE	D	W	Y	ADG	DMI	M	ME	HPG	CEM	ST	MARB	YG	CW	REA	FAT													
7	-0.5	65	93	0.18	0.49	32	-4	13	4	20	0.50	0.01	5	0.05	0.02	97%	75%	55%	74%	88%	23%	7%	20%	23%	93%	2%	33%	21%	95%	65%	47%

RED RMJ REDMAN 1T  
**RIDGE AVALANCHE 2051**  
RIDGE LILA 8132-0017

SPUR FRANCHISE OF GARTON  
**HRR BLOCKANA 1152**  
HRR BLOCKANA 013

5L NORSEMAN KING 2291  
CROWFOOT KURUBA 4033P  
5L AVALANCHE 525-1014  
RIDGE LILA 101-8132  
SPUR FRANCHISE 7070  
H & H IRENE LASS 0135  
STEADFAST BOAZ T71  
HRR BLOCKANA 845

BW	95
ADJ WW	714
WR	116
ADJ YW	1141
YR	107
SCROTAL	36.3
DAM'S MPPA	107

BLK This is a black-red carrier out of our new herd sire Ridge Avalanche 2051. Here is performance calf going back to two exceptional dams in the 013 and 0017 Ridge Lila. There is a lot of performance and maternal in this bull. He is worth a second look.



**LOT 28**

**HRR BLOCKANA 1150, DAM**



**LOT 28**

## HRR AVALANCHE 4369

ProS	HB	GM
78	34	44

BIRTH DATE: **3/26/24** REG. #: **4958530** CAT: **1A 100%**

85%	84%	65%	CE	D	W	Y	ADG	DMI	M	ME	HPG	CEM	ST	MARB	YG	CW	REA	FAT													
7	1.2	70	107	0.23	0.64	29	5	11	3	14	0.41	0.02	20	0.19	0.01	98%	93%	33%	44%	60%	39%	24%	54%	60%	97%	64%	51%	24%	65%	36%	39%

RED RMJ REDMAN 1T  
**RIDGE AVALANCHE 2051**  
RIDGE LILA 8132-0017

RED WINDY HILL ZEPPELIN 1240  
**HRR BLOCKANA 1150**  
HRR BLOCKANA 013

5L NORSEMAN KING 2291  
CROWFOOT KURUBA 4033P  
5L AVALANCHE 525-1014  
RIDGE LILA 101-8132  
RED MRLA 61X  
RED WINDY HILL M NALPOEON 50  
STEADFAST BOAZ T71  
HRR BLOCKANA 845

BW	103
ADJ WW	723
WR	117
ADJ YW	1133
YR	106
SCROTAL	36.8
DAM'S MPPA	105

HRR Avalanche 4369 is a three quarter brother to lot 27, HRR Avalanche 4343. These bulls look very similar in type and kind. A ton of performance at weaning and yearling with super maternal genetics in the top and bottom side of the pedigree.





**LOT 29**



**LOT 29**

## HRR NAVIGATOR 4266

ProS	HB	GM
82	32	50
81%	86%	50%

BIRTH DATE: **2/27/24** REG. #: **4958240** CAT: **1A 100%**

CED	BW	WW	YW	ADG	DMI	M	ME	HPG	CEM	ST	MARB	YG	CW	REA	FAT
13	0.0	72	107	0.22	0.96	27	-1	10	7	11	0.53	-0.01	25	0.25	0.00
56%	82%	26%	44%	69%	75%	36%	25%	80%	53%	91%	28%	16%	42%	27%	21%

RIDGE COMPASS 7087  
**RIDGE NAVIGATOR 0039**  
 RIDGE HOBO 016-9027

RIDGE TRAVELER 5412  
**HRR THUNDER 740**  
 HRR THUNDRESS 435

RRA IMPACT 505  
 RIDGE LILA 8132-0017  
 5L SIGNATURE 5615  
 SIXL MS HOBO 016  
 RIDGE LEGEND 2069  
 RIDGE CASEY 8034-3032  
 FEDDES MONTANA X44  
 HRR THUNDRESS 741

BW	90
ADJ WW	648
WR	105
ADJ YW	1070
YR	100
SCROTAL	36.9
DAM'S MPPA	100

*HRR Navigator 4266 is a deep ribbed, good performing Ridge Navigator 0039 son out of a proven cow, HRR Thunder 740. She is a solid, no nonsense cow that seems to have eluded us and not gotten a photo taken. The combination of Ridge Traveler 5412 and Ridge Navigator should be a good one.*



**LOT 30**



**LOT 30**

## HRR BODY BUILDER 4271

ProS	HB	GM
89	33	56
71%	85%	36%

BIRTH DATE: **2/28/24** REG. #: **4958274** CAT: **1A 100%**

CED	BW	WW	YW	ADG	DMI	M	ME	HPG	CEM	ST	MARB	YG	CW	REA	FAT
9	0.9	68	103	0.22	0.78	25	5	10	3	15	0.47	0.03	30	0.27	0.01
93%	91%	41%	53%	65%	56%	58%	54%	82%	98%	48%	39%	31%	26%	24%	38%

5L BLOCKADE 2218-30B  
**5L BODY BUILDER 4434-68D**  
 5L RED BIRD 411-4434

RIDGE PROVISION 6013  
**HRR FREYJA 804**  
 HRR FREYJA 651

5L DEFENDER 560-30Z  
 5L OPAL 656-2218  
 5L CRAFTSMAN 1134-150X  
 5L RED BIRD 1312-411  
 5L ADVANTAGE 3267-221Y  
 RIDGE MONA 8162-2057  
 MLK CRK EXPRESS 9141  
 HRR FREYJA 931

BW	91
ADJ WW	653
WR	106
ADJ YW	1136
YR	106
SCROTAL	33.9
DAM'S MPPA	99

*This 5L Body Builder 4434-68D son did a nice job at the scale and his dam, HRR Freyja 804 is an attractive, long bodied female that comes from a good cow line. A solid performance bull.*



**HRR FREYJA 804, DAM**



**LOT 31**



**LOT 31**

## HRR RAD 4211

ProS	HB	GM
61	34	28
96%	84%	91%

BIRTH DATE: **2/14/24** REG. #: **4958670** CAT: **1A 100%**

CED	BW	WW	YW	ADG	DMI	M	ME	HPG	CEM	ST	MARB	YG	CW	REA	FAT
7	0.6	74	102	0.18	0.67	26	-13	11	0	13	0.33	-0.03	20	0.24	0.00
97%	89%	20%	55%	88%	42%	43%	7%	63%	99%	77%	76%	12%	64%	28%	17%

5L DEFENDER 560-30Z  
**RIDGE RAD 9075**  
 RIDGE CASEY 978-8034

RED U-2 AUTHENTIC 139A  
**HRR BLOCKANA 264**  
 HRR BLOCKANA 013

5L ADVOCATE 817-14W  
 5L BLACK ADINA 525-560  
 5L GRAND EXPRESS 453-5655  
 OTT-CASEY-F412-978  
 RED MINBURN COPENHAGEN 3Y  
 RED U-2 STORMY 7202T  
 STEADFAST BOAZ T71  
 HRR BLOCKANA 845

BW	90
ADJ WW	666
WR	108
ADJ YW	1098
YR	103
SCROTAL	35.5
DAM'S MPPA	103

*HRR Rockefeller 4211 is a high performance son of Ridge RAD 9075 out of HRR Blockana 264 who is a daughter of HRR Blockana 013, a top donor cow. This two year old dam did a great job for her first try and will be selling as lot 64.*



**HRR BLOCKANA 013, MGD**





**LOT 32**



**HRR MONA 978, DAM**



**LOT 32**  
**HRR JULIAN 4244**

<b>ProS</b>	<b>HB</b>	<b>GM</b>														
120	92	28														
27%	3%	91%														
			BIRTH DATE: <b>2/24/24</b>			REG. #: <b>4958370</b>			CAT: <b>1A 100%</b>							
<b>CE</b>	<b>D</b>	<b>BW</b>	<b>WW</b>	<b>YW</b>	<b>ADG</b>	<b>DMI</b>	<b>M</b>	<b>ME</b>	<b>HPG</b>	<b>CEM</b>	<b>ST</b>	<b>MARB</b>	<b>YG</b>	<b>CW</b>	<b>REA</b>	<b>FAT</b>
16	-2.3	66	100	0.21	0.48	27	-5	11	9	19	0.25	0.13	20	0.01	0.03	
12%	40%	47%	61%	74%	22%	39%	16%	57%	17%	6%	89%	79%	64%	73%	79%	

BECKTON JULIAN GG B571  
**RED HILL B571 JULIAN 84S**  
BECKTON BARMAID M554 CH

HRR EXPRESS 5142  
**HRR MONA 978**  
HRR MONA 773

- BKT JULIAN 7526 G
- BKT MARTA 9A13 JL
- BECKTON CHAMP R3 H338
- BECKTON BARMAID H031 HR
- MLK CRK EXPRESS 9127
- HRR LAKOTA 115
- RIDGE TRAVELER 5407
- HRR MONA 517

<b>BW</b>	80
<b>ADJ WW</b>	590
<b>WR</b>	96
<b>ADJ YW</b>	1142
<b>YR</b>	107
<b>SCROTAL</b>	35.3
<b>DAM'S MPPA</b>	100

*HRR Julian 4244 is a moderate birth weight Red Hill B571 Julian 84S son with very good post weaning growth. His dam, HRR Mona 978 raised a top bull calf in our 2024 sale going to Diamond B Red Angus. This is a bull with a good hip and a lot of top in him.*



**LOT 33**



**HRR MONA DIVA 797, DAM**



**LOT 33**  
**HRR BODY BUILDER 4257**

<b>ProS</b>	<b>HB</b>	<b>GM</b>														
105	65	40														
49%	26%	74%														
			BIRTH DATE: <b>2/26/24</b>			REG. #: <b>4958266</b>			CAT: <b>1A 100%</b>							
<b>CE</b>	<b>D</b>	<b>BW</b>	<b>WW</b>	<b>YW</b>	<b>ADG</b>	<b>DMI</b>	<b>M</b>	<b>ME</b>	<b>HPG</b>	<b>CEM</b>	<b>ST</b>	<b>MARB</b>	<b>YG</b>	<b>CW</b>	<b>REA</b>	<b>FAT</b>
11	-1.7	56	78	0.14	0.66	25	-7	6	4	19	0.46	-0.12	14	0.51	0.01	
75%	52%	83%	93%	97%	41%	52%	14%	99%	93%	6%	41%	2%	82%	3%	33%	

5L BLOCKADE 2218-30B  
**5L BODY BUILDER 4434-68D**  
5L RED BIRD 411-4434

5L ADVANTAGE 3267-221Y  
**HRR MONA DIVA 797**  
OTT-MONA-758-970

- 5L DEFENDER 560-30Z
- 5L OPAL 656-2218
- 5L CRAFTSMAN 1134-150X
- 5L RED BIRD 1312-411
- BUF CRK THE RIGHT KIND U199
- 5L ADINA 195-3267
- SELL COPPERTOP 608
- OTT-MONA-303-758

<b>BW</b>	87
<b>ADJ WW</b>	617
<b>WR</b>	100
<b>ADJ YW</b>	1010
<b>YR</b>	95
<b>SCROTAL</b>	34.9
<b>DAM'S MPPA</b>	95

*HRR Body Builder 4257 is a 5L Body Builder 4434-68D son that stems back to the long lived, big volumed, OTT-Mona-758-970 cow that calved her last calf at age 17. A dark red moderate bull should put some maternal genetics to work.*



**LOT 34**



**HRR LAKOTA 079, DAM**



**LOT 34**  
**HRR MECHANIC 4338**

<b>ProS</b>	<b>HB</b>	<b>GM</b>														
116	65	51														
32%	26%	48%														
			BIRTH DATE: <b>3/9/24</b>			REG. #: <b>4958406</b>			CAT: <b>1A 100%</b>							
<b>CE</b>	<b>D</b>	<b>BW</b>	<b>WW</b>	<b>YW</b>	<b>ADG</b>	<b>DMI</b>	<b>M</b>	<b>ME</b>	<b>HPG</b>	<b>CEM</b>	<b>ST</b>	<b>MARB</b>	<b>YG</b>	<b>CW</b>	<b>REA</b>	<b>FAT</b>
18	-3.6	55	98	0.26	0.73	27	7	10	7	19	0.57	0.26	13	-0.18	0.08	
4%	18%	85%	66%	34%	50%	41%	67%	73%	41%	5%	22%	99%	85%	95%	99%	

JACOBSON MECHANIC 9118  
**JACOBSON MECHANIC 1033**  
JACOBSON QUEEN 8085

RIDGE CROSSFIRE 6107  
**HRR LAKOTA 079**  
HRR LAKOTA 343

- 5L CRAFTSMAN 2393-13C
- JACOBSON SADIE 7122
- 5L BOURNE 117-48A
- FOREVER QUEEN 948-2657
- RIDGE CROSSFIRE 4009
- RIDGE BLOCKANA R91-9501
- MUSHRUSH IMPRESSIVE CA U236
- MLK CRK LAKOTA 953

<b>BW</b>	76
<b>ADJ WW</b>	651
<b>WR</b>	106
<b>ADJ YW</b>	1167
<b>YR</b>	109
<b>SCROTAL</b>	32.8
<b>DAM'S MPPA</b>	100

*HRR Mexhanic 4338 is a heifer bull with excellent ratios at weaning and yearling with a CED and BW EPD in the top 20% or higher.*





**LOT 35**



**HRR PAULA 989, DAM**



**LOT 35**

## HRR TENOR 4354

ProS	HB	GM
59	48	12
96%	61%	99%

BIRTH DATE: **3/17/24** REG. #: **4958340** CAT: **2** **100%**

CE	BW	WW	YW	ADG	DMI	M	ME	HPG	CEM	ST	MARB	YG	CW	REA	FAT
11	0.0	68	101	0.21	0.92	28	3	6	4	18	0.18	0.01	15	0.24	0.02
72%	82%	39%	58%	75%	72%	31%	44%	99%	95%	11%	96%	20%	80%	28%	61%

5L BODY BUILDER 4434-68D  
**RIDGE DIMENSION 1010**  
 RIDGE CASEY 9071-4050

BIRNIE EXPRESS 353A  
**HRR PAULA 989**  
 HRR 605

- 5L BLOCKADE 2218-30B
- 5L RED BIRD 411-4434
- 5L LEGEND 1553-425V
- RIDGE CASEY 155-9071
- MLK CRK EXPRESS 9127
- OTT-MONA-758-970
- RED HILL B571 JULIAN 84S
- HRR PAULA 429

<b>BW</b>	<b>85</b>
<b>ADJ WW</b>	<b>709</b>
<b>WR</b>	<b>115</b>
<b>ADJ YW</b>	<b>1124</b>
<b>YR</b>	<b>105</b>
<b>SCROTAL</b>	<b>36.5</b>
<b>DAM'S MPPA</b>	<b>107</b>

*HRR Tenor 4354 is a black-red carrier with a moderate birth weight Ridge Dimension 1010 son with above average 115 weaning ratio and 106 yearling performance. His dam, HRR Paula 989 is part of the really functional Paula cow family and posts a 107 MPPA.*



**LOT 36**



**HRR BLOCKANA 566, DAM**



**LOT 36**

## HRR ROCKEFELLER 4228

ProS	HB	GM
140	78	62
9%	10%	26%

BIRTH DATE: **2/21/24** REG. #: **4958162** CAT: **1A** **100%**

CE	BW	WW	YW	ADG	DMI	M	ME	HPG	CEM	ST	MARB	YG	CW	REA	FAT
14	-5.2	64	89	0.16	0.43	29	9	14	9	18	0.86	0.24	24	-0.16	0.05
28%	5%	57%	80%	94%	18%	18%	80%	14%	12%	11%	3%	99%	52%	94%	95%

5L BOURNE 117-48A  
**DAHLKE ROCKEFELLER 009H**  
 DAHLKE MS HILTON 13F ET

HRR RAYMOND 975  
**HRR BLOCKANA 566**  
 HRR BLOCKANA 959

- 5L ADVANTAGE 3267-221Y
- 5L ROXIE 854-117
- BIEBER CL ATOMIC C218
- DAHLKE MS.HILTON 263C
- SHOCO DATA
- SODAK PAULA 6139-96
- SHOCO DATA
- FEDDES BLOCKANA 166

<b>BW</b>	<b>70</b>
<b>ADJ WW</b>	<b>610</b>
<b>WR</b>	<b>99</b>
<b>ADJ YW</b>	<b>1044</b>
<b>YR</b>	<b>98</b>
<b>SCROTAL</b>	<b>33.7</b>
<b>DAM'S MPPA</b>	<b>103</b>

*HRR Rockefeller 4228 is your sleep-all-night Dahlke Rockefeller 009H son out of the Blockana cow family that is prevalent throughout this sale. His dam, HRR Blockana 566 is a 10 year old cow with a 103 MPPA.*



**LOT 37**



**HRR MADAME PRIDE 688, DAM**



**LOT 37**

## HRR KEGGER 4229

ProS	HB	GM
132	78	54
14%	10%	41%

BIRTH DATE: **2/22/24** REG. #: **4958214** CAT: **2** **100%**

CE	BW	WW	YW	ADG	DMI	M	ME	HPG	CEM	ST	MARB	YG	CW	REA	FAT
11	-0.7	71	102	0.20	0.59	23	5	8	5	21	0.50	0.16	35	0.13	0.04
80%	72%	28%	55%	81%	33%	76%	54%	97%	81%	1%	33%	89%	13%	48%	83%

5L BODY BUILDER 4434-68D  
**RIDGE KEGGER 2102**  
 RIDGE BLOCKANA 9160-8085

SHOCO DATA  
**HRR MADAME PRIDE 688**  
 S A V MADAME PRIDE 2330

- 5L BLOCKADE 2218-30B
- 5L RED BIRD 411-4434
- 5L BOURNE 117-48A
- RIDGE BLOCKANA R91-9160
- SHOCO SIR ROBIN
- VDAR BLACKANA 303
- S A V FINAL ANSWER 0035
- S A V MADAME PRIDE 0075

<b>BW</b>	<b>82</b>
<b>ADJ WW</b>	<b>613</b>
<b>WR</b>	<b>99</b>
<b>ADJ YW</b>	<b>1108</b>
<b>YR</b>	<b>104</b>
<b>SCROTAL</b>	<b>33.8</b>
<b>DAM'S MPPA</b>	<b>103</b>

*This black red carrier, HRR Kegger 4229 looked really good as a calf and did well on feed. His dam, HRR Madame Pride 688 has a 103 MPPA on 7 calves. She shares the same lineage as the infamous, record selling \$1.5 million S A V America 8018 bull that shattered records at Schaff Angus Valley. You will like his profile and thickness.*





**LOT 38**



**HRR GOLDI 745, DAM**



**LOT 38**

## HRR FOREMAN 4332

ProS HB GM

**106 67 39**

48% 23% 76%

BIRTH DATE: **3/7/24** REG. #: **4958238** CAT: **1A 100%**

CE	D	BW	WW	YW	ADG	DMI	M	ME	HPG	CEM	ST	MARB	YG	CW	REA	FAT
<b>12</b>	<b>-3.6</b>	<b>66</b>	<b>97</b>	<b>0.20</b>	<b>0.52</b>	<b>21</b>	<b>0</b>	<b>15</b>	<b>5</b>	<b>17</b>	<b>0.48</b>	<b>0.00</b>	<b>10</b>	<b>0.10</b>	<b>0.01</b>	
57%	18%	49%	66%	79%	26%	91%	30%	9%	89%	23%	36%	19%	89%	55%	35%	

5L BOURNE 117-48A  
**5L FOREMAN 2174-370E**  
5L ADINA 1551-2174

5L ADVANTAGE 3267-221Y  
**HRR GOLDI 745**  
HRR GOLDI 431

5L ADVANTAGE 3267-221Y  
5L ROXIE 854-117  
O C C EMBLAZON 854E  
5L ADINA 525-1551  
BUF CRK THE RIGHT KIND U199  
5L ADINA 195-3267  
MUSHRUSH IMPRESSIVE CA U236  
HRR GOLDI 8111

<b>BW</b>	<b>82</b>
<b>ADJ WW</b>	<b>602</b>
<b>WR</b>	<b>98</b>
<b>ADJ YW</b>	<b>1059</b>
<b>YR</b>	<b>99</b>
<b>SCROTAL</b>	<b>37.2</b>
<b>DAM'S MPPA</b>	<b>104</b>

*HRR Foreman 4332 is a dark red, soggy, deep ribbed bull. His tidy uddered dam, HRR Goldie 745 posted a 104 MPPA.*



**LOT 39**



**HRR SALLEE 021, DAM**



**LOT 39**

## HRR MECHANIC 4263

ProS HB GM

**86 37 49**

76% 79% 53%

BIRTH DATE: **2/27/24** REG. #: **4958404** CAT: **1A 100%**

CE	D	BW	WW	YW	ADG	DMI	M	ME	HPG	CEM	ST	MARB	YG	CW	REA	FAT
<b>15</b>	<b>-3.9</b>	<b>57</b>	<b>92</b>	<b>0.22</b>	<b>0.51</b>	<b>24</b>	<b>8</b>	<b>10</b>	<b>8</b>	<b>14</b>	<b>0.31</b>	<b>0.04</b>	<b>25</b>	<b>0.28</b>	<b>0.02</b>	
18%	15%	81%	76%	68%	25%	72%	75%	85%	34%	57%	79%	32%	42%	23%	61%	

JACOBSON MECHANIC 9118  
**JACOBSON MECHANIC 1033**  
JACOBSON QUEEN 8085

RED WINDY HILL ZEPPELIN 1240  
**HRR SALLEE 021**  
HRR SALLEE 321

5L CRAFTSMAN 2393-13C  
JACOBSON SADIE 7122  
5L BOURNE 117-48A  
FOREVER QUEEN 948-2657  
RED MRLA 61X  
RED WINDY HILL M NALPOEON 50  
FEDDES MONTANA X44  
HRR SALLEE 212

<b>BW</b>	<b>69</b>
<b>ADJ WW</b>	<b>587</b>
<b>WR</b>	<b>95</b>
<b>ADJ YW</b>	<b>1082</b>
<b>YR</b>	<b>101</b>
<b>SCROTAL</b>	<b>33.9</b>
<b>DAM'S MPPA</b>	<b>99</b>

*HRR Mechanic 4263 is a heifer bull with a 69# birthweight for those who want to take the work out of calving heifers. His 5-year-old dam, HRR Sallee 021 is a darker red, Windy Hill Zeppelin 1240 daughter who is doing a great job.*



**LOT 40**



**HRR LAKOTA 115, MGD**



**LOT 40**

## HRR EXPRESS 4205

ProS HB GM

**100 78 22**

56% 10% 95%

BIRTH DATE: **2/10/24** REG. #: **4958664** CAT: **1A 100%**

CE	D	BW	WW	YW	ADG	DMI	M	ME	HPG	CEM	ST	MARB	YG	CW	REA	FAT
<b>15</b>	<b>-3.5</b>	<b>62</b>	<b>83</b>	<b>0.13</b>	<b>0.49</b>	<b>29</b>	<b>7</b>	<b>7</b>	<b>7</b>	<b>9</b>	<b>20</b>	<b>0.41</b>	<b>0.20</b>	<b>18</b>	<b>-0.29</b>	<b>0.03</b>
26%	20%	65%	88%	98%	23%	20%	67%	99%	11%	3%	51%	97%	73%	99%	72%	

MLK CRK EXPRESS 9127  
**HRR EXPRESS 5142**  
HRR LAKOTA 115

5L BODY BUILDER 4434-68D  
**HRR LAKOTA 268**  
HRR LAKOTA 115

5L GRAND EXPRESS 453-5655  
MLK CRK SHEBA 043  
SHOCO DATA  
MLK CRK LAKOTA 850  
5L BLOCKADE 2218-30B  
5L RED BIRD 411-4434  
SHOCO DATA  
MLK CRK LAKOTA 850

<b>BW</b>	<b>70</b>
<b>ADJ WW</b>	<b>680</b>
<b>WR</b>	<b>110</b>
<b>ADJ YW</b>	<b>975</b>
<b>YR</b>	<b>91</b>
<b>SCROTAL</b>	<b>36.4</b>
<b>DAM'S MPPA</b>	<b>104</b>

*HRR Express 4205 is the result of a half sister, half brother mating tracing back to the HRR Lakota 115 donor cow that has left such an impact in our herd. We have 22 daughters and grand daughters in production from HRR Lakota 115 and here is that line on both sides of the pedigree. Starting with a 70# BW and weaning at 680#, HRR Express 4205 could be a deep made heifer bull with maternal to no end.*





**LOT 41**



**HRR JULIANN 9191, DAM**



**LOT 41**

## HRR JULIAN 4220

ProS	HB	GM
135	110	25
11%	1%	93%

BIRTH DATE: **2/18/24** REG. #: **4958382** CAT: **1A 100%**

CED	BW	WW	YW	ADG	DMI	M	ME	HPG	CEM	ST	MARB	YG	CW	REA	FAT
17	-2.7	60	85	0.16	0.59	25	-9	15	11	19	0.36	0.12	16	-0.02	0.03
5%	33%	70%	86%	95%	33%	52%	12%	7%	1%	7%	71%	76%	76%	79%	79%

BECKTON JULIAN GG B571  
**RED HILL B571 JULIAN 84S**  
 BECKTON BARMAID M554 CH

5L ADVANTAGE 3267-221Y  
**HRR JULIANN 9191**  
 DR 21R JULIAN W100

- [ BKT JULIAN 7526 G
- [ BKT MARTA 9A13 JL
- [ BECKTON CHAMP R3 H338
- [ BECKTON BARMAID H031 HR
- [ BUF CRK THE RIGHT KIND U199
- [ 5L ADINA 195-3267
- [ MLK CRK EPIC 7160
- [ HCK MISS JULIAN 21R

BW	72
ADJ WW	534
WR	87
ADJ YW	986
YR	92
SCROTAL	35.1
DAM'S MPPA	91

*HRR Julian 4220 is a sleep-all-night heifer bull while ranking in the top 10% for ProS and HB, STAY, and HPG. His Sire, Red Hill Julian 84S is a great producer of solid functional cows.*



**LOT 42**



**HRR LAKOTA 699, DAM**



**LOT 42**

## HRR ROCKEFELLER 4227

ProS	HB	GM
155	97	58
3%	1%	33%

BIRTH DATE: **2/20/24** REG. #: **4958718** CAT: **1A 100%**

CED	BW	WW	YW	ADG	DMI	M	ME	HPG	CEM	ST	MARB	YG	CW	REA	FAT
12	-3.8	66	101	0.22	0.69	33	0	15	6	20	0.59	0.05	23	0.26	0.03
66%	17%	48%	59%	70%	45%	3%	29%	8%	72%	2%	20%	43%	54%	25%	77%

5L BOURNE 117-48A  
**DAHLKE ROCKEFELLER 009H**  
 DAHLKE MS HILTON 13F ET

RED HILL B571 JULIAN 84S  
**HRR LAKOTA 699**  
 HRR LAKOTA 430A

- [ 5L ADVANTAGE 3267-221Y
- [ 5L ROXIE 854-117
- [ BIEBER CL ATOMIC C218
- [ DAHLKE MS.HILTON 263C
- [ BECKTON JULIAN GG B571
- [ BECKTON BARMAID M554 CH
- [ 5L ADVOCATE 817-14W
- [ HRR LAKOTA 115

BW	ET
ADJ WW	526
WR	ET
ADJ YW	967
YR	ET
SCROTAL	37.7
DAM'S MPPA	109

*HRR Rockefeller 4227 is a Dahlke Rockefeller 009H son that should work on heifers. He has an outstanding maternal donor line that stems from HRR Lakota 115, who was one of the great cows of the breed and progresses to his dam, HRR Lakota 699.*



**LOT 43**



**HRR BLOCKANA 013, DAM**



**LOT 43**

## HRR COPENHAGEN 4246

ProS	HB	GM
114	63	51
34%	29%	48%

BIRTH DATE: **2/24/24** REG. #: **4958710** CAT: **1A 100%**

CED	BW	WW	YW	ADG	DMI	M	ME	HPG	CEM	ST	MARB	YG	CW	REA	FAT
10	-0.1	72	113	0.26	0.80	30	-4	12	6	15	0.39	0.13	32	0.05	0.02
88%	81%	25%	30%	39%	59%	17%	18%	37%	80%	47%	58%	80%	19%	65%	53%

RED RMJ REDMAN 1T  
**RED MINBURN COPENHAGEN 3Y**  
 MINBURN MAY 112M

STEADFAST BOAZ T71  
**HRR BLOCKANA 013**  
 HRR BLOCKANA 845

- [ 5L NORSEMAN KING 2291
- [ CROWFOOT KURUBA 4033P
- [ CRESCENT CREEK MAIN EVENT 6H
- [ MINBURN MAY 90G
- [ MUSHRUSH ROCKET P016
- [ MUSHRUSH LANA LT R040
- [ SHOCO DATA
- [ FEDDES BLOCKANA 940

BW	ET
ADJ WW	637
WR	ET
ADJ YW	1016
YR	ET
SCROTAL	34.8
DAM'S MPPA	107

*HRR Copenhagen 4246 is probably the last RED Minburn Copenhagen 3Y ET son to sell here at Heart River Ranch out of our HRR Blockana 013 Blockana donor cow. The daughters should be the kind to keep with these two bloodlines. Use on cows.*





**LOT 44**



**HRR FIREFLY 906, DAM**



**LOT 44**

## HRR RAD 4272

ProS	HB	GM
75	24	52
88%	94%	46%

BIRTH DATE: **2/28/24** REG. #: **4958366** CAT: **1A 100%**

CED	BW	WW	YW	ADG	DMI	M	ME	HPG	CEM	ST	MARB	YG	CW	REA	FAT
9	0.0	70	106	0.22	0.97	27	4	12	4	11	0.42	-0.17	26	0.45	-0.04
90%	82%	30%	45%	63%	76%	39%	51%	34%	95%	87%	49%	1%	39%	5%	1%

5L DEFENDER 560-30Z  
**RIDGE RAD 9075**  
 RIDGE CASEY 978-8034  
  
 RIDGE PRAGMATIC 6098  
**HRR FIREFLY 906**  
 HRR FIREFLY 757

5L ADVOCATE 817-14W  
 5L BLACK ADINA 525-560  
 5L GRAND EXPRESS 453-5655  
 OTT-CASEY-F412-978  
 5L TOPGUN 560-65B  
 RIDGE SHEILA 009-2088  
 BUF CRK THE RIGHT KIND U199  
 HRR FIREFLY 965

<b>BW</b>	91
<b>ADJ WW</b>	711
<b>WR</b>	115
<b>ADJ YW</b>	1072
<b>YR</b>	100
<b>SCROTAL</b>	36.9
<b>DAM'S MPPA</b>	107

*HRR Rad 4272 is a Ridge Rad 9075 son that performed well at weaning out of a Ridge Pragmatic 6098 dam, HRR Firefly 906. This mating should make some really good uddered daughters. Dam's MPPA 107.*



**LOT 45**



**HRR LAKOTA 707, DAM**



**LOT 45**

## HRR FOREMAN 4277

ProS	HB	GM
116	75	41
31%	12%	71%

BIRTH DATE: **2/29/24** REG. #: **4958246** CAT: **1A 100%**

CED	BW	WW	YW	ADG	DMI	M	ME	HPG	CEM	ST	MARB	YG	CW	REA	FAT
18	-4.0	64	87	0.15	0.58	21	2	13	9	17	0.61	0.10	17	0.07	0.04
3%	14%	58%	83%	96%	32%	92%	41%	21%	10%	20%	18%	68%	74%	61%	81%

5L BOURNE 117-48A  
**5L FOREMAN 2174-370E**  
 5L ADINA 1551-2174  
  
 MLK CRK EXPRESS 9127  
**HRR LAKOTA 707**  
 HRR LAKOTA 528

5L ADVANTAGE 3267-221Y  
 5L ROXIE 854-117  
 O C C EMBLAZON 854E  
 5L ADINA 525-1551  
 5L GRAND EXPRESS 453-5655  
 MLK CRK SHEBA 043  
 XO CROWFOOT 0102X  
 HRR LAKOTA 090

<b>BW</b>	74
<b>ADJ WW</b>	655
<b>WR</b>	106
<b>ADJ YW</b>	1037
<b>YR</b>	97
<b>SCROTAL</b>	33.0
<b>DAM'S MPPA</b>	102

*Here is a light birthweight 5L Foreman 2174-370E son from a good dam, HRR Lakota 707 who has a 102 MPPA.*



**LOT 46**



**HRR COLLEEN 613, MGD**



**LOT 46**

## HRR TENOR 4348

ProS	HB	GM
111	50	61
39%	56%	28%

BIRTH DATE: **3/14/24** REG. #: **4958342** CAT: **1A 100%**

CED	BW	WW	YW	ADG	DMI	M	ME	HPG	CEM	ST	MARB	YG	CW	REA	FAT
14	-2.2	68	109	0.26	1.14	26	0	5	5	18	0.40	0.04	41	0.36	0.01
35%	42%	40%	39%	39%	88%	51%	29%	99%	87%	12%	53%	34%	6%	14%	33%

5L BODY BUILDER 4434-68D  
**RIDGE DIMENSION 1010**  
 RIDGE CASEY 9071-4050  
  
 BIRNIE EXPRESS 353A  
**HRR COLLEEN 979**  
 HRR COLLEEN 613

5L BLOCKADE 2218-30B  
 5L RED BIRD 411-4434  
 5L LEGEND 1553-425V  
 RIDGE CASEY 155-9071  
 MLK CRK EXPRESS 9127  
 OTT-MONA-758-970  
 STEADFAST BOAZ T71  
 HRR COLLEEN 429

<b>BW</b>	78
<b>ADJ WW</b>	626
<b>WR</b>	101
<b>ADJ YW</b>	1213
<b>YR</b>	114
<b>SCROTAL</b>	35.0
<b>DAM'S MPPA</b>	97

*HRR Tenor is a moderate birth weight bull that went to town after weaning. Super dark red in color and good disposition.*





**LOT 47**



**HRR FIREFLY 240, MGD**



**LOT 47**

## HRR LANCASTER 4286

ProS	HB	GM
131	96	35
15%	2%	83%

BIRTH DATE: **3/1/24** REG. #: **4958228** CAT: **1A 100%**

CED	BW	WW	YW	ADG	DMI	M	ME	HPG	CEM	ST	MARB	YG	CW	REA	FAT
10	0.3	73	111	0.24	0.53	20	-2	14	7	19	0.27	0.05	22	-0.01	0.00
82%	85%	22%	34%	53%	27%	95%	23%	16%	50%	5%	86%	38%	58%	78%	11%

RED MINBURN COPENHAGEN 3Y  
**HRR COPENHAGEN 2265**  
RED BAR-E-L BULL MEG 985W

5L ADVANTAGE 3267-221Y  
**HRR FIREFLY 744**  
HRR FIREFLY 240

RED RMJ REDMAN 1T  
MINBURN MAY 112M  
RED TER-RON BLITZ 611N  
RED BAR-E-L MEG 85N  
BUF CRK THE RIGHT KIND U199  
5L ADINA 195-3267  
RIDGE JULIAN S005-0099  
HRR FIREFLY 0118

BW	93
ADJ WW	636
WR	103
ADJ YW	1004
YR	94
SCROTAL	36.5
DAM'S MPPA	98

*HRR Lancaster 4286 is an bull with high marks for HB, ProS, HPG and Stay. He is a deep ribbed, big bodied bull that really falls in line with the phenotype of his sire, HRR Copenhagen 2265.*



**LOT 48**



**HRR LAKOTA 844, DAM**



**LOT 48**

## HRR LANCASTER 4295

ProS	HB	GM
121	82	39
25%	7%	75%

BIRTH DATE: **3/2/24** REG. #: **4958286** CAT: **1A 100%**

CED	BW	WW	YW	ADG	DMI	M	ME	HPG	CEM	ST	MARB	YG	CW	REA	FAT
8	2.0	70	103	0.21	0.86	22	-3	15	6	17	0.33	0.04	30	0.14	0.00
94%	97%	33%	54%	75%	65%	82%	22%	6%	77%	18%	76%	33%	25%	46%	17%

RED MINBURN COPENHAGEN 3Y  
**HRR COPENHAGEN 2265**  
RED BAR-E-L BULL MEG 985W

RIDGE PROVISION 6013  
**HRR LAKOTA 844**  
HRR LAKOTA 090

RED RMJ REDMAN 1T  
MINBURN MAY 112M  
RED TER-RON BLITZ 611N  
RED BAR-E-L MEG 85N  
5L ADVANTAGE 3267-221Y  
RIDGE MONA 8162-2057  
MLK CRK KNIGHT 7153  
HRR LAKOTA 780

BW	96
ADJ WW	622
WR	101
ADJ YW	1090
YR	102
SCROTAL	35.3
DAM'S MPPA	95

*HRR Lancaster 4295 has a solid topped bull with good growth EPDs and correct phenotype.*



**LOT 49**



**HRR BLOCKANA 013, DAM**



**LOT 49**

## HRR AUTHENTIC 4302

ProS	HB	GM
68	51	17
93%	55%	97%

BIRTH DATE: **3/3/24** REG. #: **4958706** CAT: **1A 100%**

CED	BW	WW	YW	ADG	DMI	M	ME	HPG	CEM	ST	MARB	YG	CW	REA	FAT
8	1.1	69	104	0.22	0.74	28	-10	10	2	15	0.14	0.16	25	-0.06	0.03
97%	93%	36%	52%	69%	52%	24%	11%	72%	99%	44%	97%	89%	40%	85%	67%

RED MINBURN COPENHAGEN 3Y  
**RED U-2 AUTHENTIC 139A**  
RED U-2 STORMY 7202T

STEADFAST BOAZ T71  
**HRR BLOCKANA 013**  
HRR BLOCKANA 845

RED RMJ REDMAN 1T  
MINBURN MAY 112M  
RED U-2 BIG LEAGUE 544R  
RED U-2 STORMY 901J  
MUSHRUSH ROCKET P016  
MUSHRUSH LANA LT R040  
SHOCO DATA  
FEDDES BLOCKANA 940

BW	ET
ADJ WW	613
WR	ET
ADJ YW	1054
YR	ET
SCROTAL	35.1
DAM'S MPPA	107

*A HRR Blockana 013 by RED U-2 Authentic 139A ET combination. We have several RED U-2 Authentic 139A daughters in the herd and they are good performance cows with good feet, udders and dispositions. Dams MPPA 107.*





**LOT 50**



**HRR BLOCKANA 847, DAM**



**LOT 50**  
**HRR ROCKEFELLER 4308**

ProS **132** HB **67** GM **65**  
14% 23% 21% BIRTH DATE: **3/4/24** REG. #: **4958298** CAT: **1A 100%**

CED	BW	WW	YW	ADG	DMI	M	ME	HPG	CEM	ST	MARB	YG	CW	REA	FAT
<b>9</b>	<b>0.5</b>	<b>71</b>	<b>111</b>	<b>0.25</b>	<b>0.80</b>	<b>31</b>	<b>2</b>	<b>17</b>	<b>6</b>	<b>15</b>	<b>0.78</b>	<b>0.09</b>	<b>18</b>	<b>-0.05</b>	<b>0.01</b>
93%	88%	30%	34%	42%	59%	9%	41%	1%	80%	48%	6%	63%	71%	83%	44%

5L BOURNE 117-48A  
**DAHLKE ROCKEFELLER 009H**  
DAHLKE MS HILTON 13F ET

RIDGE PROVISION 6013  
**HRR BLOCKANA 847**  
HRR BLOCKANA 959

- 5L ADVANTAGE 3267-221Y
- 5L ROXIE 854-117
- BIEBER CL ATOMIC C218
- DAHLKE MS HILTON 263C
- 5L ADVANTAGE 3267-221Y
- RIDGE MONA 8162-2057
- SHOCO DATA
- FEDDES BLOCKANA 166

<b>BW</b>	<b>99</b>
<b>ADJ WW</b>	<b>652</b>
<b>WR</b>	<b>106</b>
<b>ADJ YW</b>	<b>1074</b>
<b>YR</b>	<b>101</b>
<b>SCROTAL</b>	<b>36.1</b>
<b>DAM'S MPPA</b>	<b>103</b>

Here is a Dahlke Rockefeller 009H bull with some performance. His 7-year old dam, HRR Blockana 847 has a 103 MPPA.



**LOT 51**



**HRR FREYJA 905, DAM**



**LOT 51**  
**HRR REDMANS LEGEND 4345**

ProS **64** HB **71** GM **-6**  
95% 17% 99% BIRTH DATE: **3/12/24** REG. #: **4958360** CAT: **1A 100%**

CED	BW	WW	YW	ADG	DMI	M	ME	HPG	CEM	ST	MARB	YG	CW	REA	FAT
<b>13</b>	<b>-2.3</b>	<b>57</b>	<b>90</b>	<b>0.21</b>	<b>0.85</b>	<b>27</b>	<b>-2</b>	<b>15</b>	<b>7</b>	<b>16</b>	<b>-0.16</b>	<b>-0.08</b>	<b>17</b>	<b>0.30</b>	<b>0.00</b>
49%	40%	81%	79%	73%	64%	36%	25%	8%	53%	33%	99%	4%	76%	21%	11%

RED RMJ REDMAN 1T  
**RIDGE REDMANS LEGEND 1015**  
RIDGE MONA 2057-4412

RIDGE PRAGMATIC 6098  
**HRR FREYJA 905**  
HRR FREYJA 729

- 5L NORSEMAN KING 2291
- CROWFOOT KURUBA 4033P
- 5L LEGEND 1553-425V
- RIDGE MONA 8162-2057
- 5L TOPGUN 560-65B
- RIDGE SHEILA 009-2088
- RIDGE TRAVELER 5412
- HRR FREYJA 340

<b>BW</b>	<b>84</b>
<b>ADJ WW</b>	<b>649</b>
<b>WR</b>	<b>105</b>
<b>ADJ YW</b>	<b>1010</b>
<b>YR</b>	<b>95</b>
<b>SCROTAL</b>	<b>33.4</b>
<b>DAM'S MPPA</b>	<b>101</b>

HRR Redmans Legend 4345 will sire dark red calves with good udders. He had a moderate birth with good weaning performance.



**LOT 52**



**HRR COLLEEN 308, MGD**



**LOT 52**  
**HRR JD 4254**

ProS **58** HB **50** GM **8**  
97% 57% 99% BIRTH DATE: **2/26/24** REG. #: **4958666** CAT: **1A 100%**

CED	BW	WW	YW	ADG	DMI	M	ME	HPG	CEM	ST	MARB	YG	CW	REA	FAT
<b>19</b>	<b>-4.1</b>	<b>65</b>	<b>88</b>	<b>0.14</b>	<b>0.36</b>	<b>25</b>	<b>-6</b>	<b>8</b>	<b>10</b>	<b>13</b>	<b>0.12</b>	<b>0.07</b>	<b>20</b>	<b>0.08</b>	<b>0.02</b>
2%	13%	51%	83%	97%	13%	62%	15%	96%	6%	77%	98%	53%	64%	59%	55%

RIDGE TOPGUN 9513  
**RIDGE JD 2510**  
RIDGE BLOCKANA 8085-0412

RED U-2 AUTHENTIC 139A  
**HRR COLLEEN 275**  
HRR COLLEEN 308

- 5L TOPGUN 560-65B
- RIDGE AQUILA 552-8066
- RIDGE EMPIRE 0028
- RIDGE BLOCKANA 9160-8085
- RED MINBURN COPENHAGEN 3Y
- RED U-2 STORMY 7202T
- MLK CRK EXPRESS 9127
- HRR COLLEEN 155

<b>BW</b>	<b>66</b>
<b>ADJ WW</b>	<b>606</b>
<b>WR</b>	<b>98</b>
<b>ADJ YW</b>	<b>1087</b>
<b>YR</b>	<b>102</b>
<b>SCROTAL</b>	<b>33.8</b>
<b>DAM'S MPPA</b>	<b>99</b>

HRR JD 4254 is a heifer bull that has a great top, wide stance and butt. A lot of bull here in this moderate package that has the highest CED EPD in the sale.





**LOT 53**

**HRR SHEBA 830, MGD**



**LOT 53**

## HRR JD 4269

ProS	HB	GM
136	101	35
11%	1%	82%

BIRTH DATE: **2/28/24** REG. #: **4975115** CAT: **1A 100%**

CED	BW	WW	YW	ADG	DMI	M	ME	HPG	CEM	ST	MARB	YG	CW	REA	FAT
16	-3.4	65	96	0.19	0.52	24	-1	15	7	21	0.28	0.03	22	0.10	0.00
11%	22%	54%	69%	81%	26%	70%	26%	8%	41%	2%	84%	27%	57%	55%	20%

RIDGE TOPGUN 9513  
**RIDGE JD 2510**  
 RIDGE BLOCKANA 8085-0412  
  
 5L FOREMAN 2174-370E  
**HRR LAKOTA 266**  
 HRR SHEBA 830

5L TOPGUN 560-65B  
 RIDGE AQUILA 552-8066  
 RIDGE EMPIRE 0028  
 RIDGE BLOCKANA 9160-8085  
 5L BOURNE 117-48A  
 5L ADINA 1551-2174  
 RIDGE TRAVELER 5412  
 HRR SHEBA 2132

<b>BW</b>	<b>66</b>
<b>ADJ WW</b>	<b>609</b>
<b>WR</b>	<b>100</b>
<b>ADJ YW</b>	<b>917</b>
<b>YR</b>	<b>100</b>
<b>SCROTAL</b>	<b>31.4</b>
<b>DAM'S MPPA</b>	<b>N/A</b>

*HRR JD 4269 is another sleep-all-night heifer bull with good maternal indicies out of the great Sheba cow family. This cow family is one of Chuck's favorites. We flushed the great granddam, HRR Sheba 2132 who is still in production on the ranch at 13 years of age.*



**LOT 54**

**HRR SALLEE 931, DAM**



**LOT 54**

## HRR JULIAN 4226

ProS	HB	GM
100	78	22
56%	9%	95%

BIRTH DATE: **2/20/24** REG. #: **4958328** CAT: **1A 100%**

CED	BW	WW	YW	ADG	DMI	M	ME	HPG	CEM	ST	MARB	YG	CW	REA	FAT
12	0.7	66	103	0.23	0.62	24	3	12	6	20	0.20	0.03	12	0.18	0.03
60%	90%	50%	54%	56%	36%	72%	45%	43%	77%	4%	94%	29%	86%	39%	72%

BECKTON JULIAN GG B571  
**RED HILL B571 JULIAN 84S**  
 BECKTON BARMAID M554 CH  
  
 RIDGE TRAVELER 5412  
**HRR SALLEE 931**  
 HRR SALLEE 321

BKT JULIAN 7526 G  
 BKT MARTA 9A13 JL  
 BECKTON CHAMP R3 H338  
 BECKTON BARMAID H031 HR  
 RIDGE LEGEND 2069  
 RIDGE CASEY 8034-3032  
 FEDDES MONTANA X44  
 HRR SALLEE 212

<b>BW</b>	<b>85</b>
<b>ADJ WW</b>	<b>630</b>
<b>WR</b>	<b>102</b>
<b>ADJ YW</b>	<b>1102</b>
<b>YR</b>	<b>103</b>
<b>SCROTAL</b>	<b>38.7</b>
<b>DAM'S MPPA</b>	<b>101</b>

*HRR Julian 4226 is a long sided, really complete son of Red Hill B571 Julian 84S with Ridge Traveler 5412 on the bottom side of the pedigree. His dam, HRR Sallee 931 has a MPPA of 101 and is phenotypically, long sided and attractive.*



**LOT 55**

**HRR EILEEN 967, DAM**



**LOT 55**

## HRR NAVIGATOR 4243

ProS	HB	GM
135	83	52
11%	6%	45%

BIRTH DATE: **2/24/24** REG. #: **4958316** CAT: **1A 100%**

CED	BW	WW	YW	ADG	DMI	M	ME	HPG	CEM	ST	MARB	YG	CW	REA	FAT
14	-1.3	63	105	0.26	0.65	25	0	12	7	19	0.41	0.05	20	-0.07	-0.01
39%	58%	59%	48%	38%	40%	62%	29%	37%	57%	5%	51%	41%	65%	86%	6%

RIDGE COMPASS 7087  
**RIDGE NAVIGATOR 0039**  
 RIDGE HOBO 016-9027  
  
 RIDGE TRAVELER 5407  
**HRR EILEEN 967**  
 HRR EILEEN 192

RRA IMPACT 505  
 RIDGE LILA 8132-0017  
 5L SIGNATURE 5615  
 SIXL MS HOBO 016  
 RIDGE LEGEND 2069  
 RIDGE MONA 970-2505ET  
 MLK CRK GUILIANI 9219  
 HRR EILEEN 9159

<b>BW</b>	<b>87</b>
<b>ADJ WW</b>	<b>585</b>
<b>WR</b>	<b>95</b>
<b>ADJ YW</b>	<b>1113</b>
<b>YR</b>	<b>104</b>
<b>SCROTAL</b>	<b>32.3</b>
<b>DAM'S MPPA</b>	<b>96</b>

*HRR Navigator 4243 is a Ridge Navigator 0039 son that gained really well with really balanced EPDs. His dam, HRR Eileen 967 is a moderate, easy fleshing, front pasture dam that brings in a solid calf every year.*





**LOT 56**



**MLK CRK LAKOTA 2115, DAM**



## LOT 56 HRR GRAZIER 4245

ProS	HB	GM	BIRTH DATE: 2/24/24 REG. #: 4976755 CAT: 1A 100%																												
119	90	28	28%	3%	90%	CED	BW	WW	YW	ADG	DMI	M	ME	HPG	CEM	ST	MARB	YG	CW	REA	FAT										
15	-5.3	50	73	0.15	0.49	31	-4	9	7	22	0.53	0.09	0	-0.18	0.03	23%	5%	94%	96%	96%	23%	11%	19%	96%	45%	1%	28%	62%	98%	95%	67%

BB 6021 GRAZER 6242  
**OCC RED GRAZER 610Z**  
OCC VANESSA 829S

MLK CRK EXPRESS 9141  
**MLK CRK LAKOTA 2115**  
MLK CRK LAKOTA 932

BB 5236 BBRED 6021  
BB M740 BBRED 5382  
PCC COLORADO HOBO  
OCC VANESSA 768P  
5L GRAND EXPRESS 453-5655  
MLK CRK SHEBA 079  
RED CROWFOOT OLE'S OSCAR  
MLK CRK LAKOTA 330

BW	ET
ADJ WW	583
WR	ET
ADJ YW	992
YR	ET
SCROTAL	35.8
DAM'S MPPA	103

Here is a rare opportunity for a son of the OCC Grazer 610Z by MLK CRK Lakota 2115. OCC Grazer 610Z is known for siring some of the best moderate framed-good uddered daughters in the country. Here is a heifer bull to keep all the daughters and build your cow herd.



**LOT 57**



**HRR ESTONIA 815, DAM**



## LOT 57 HRR FOREMAN 4248

ProS	HB	GM	BIRTH DATE: 2/25/24 REG. #: 4958272 CAT: 1A 100%																												
144	104	40	6%	1%	74%	CED	BW	WW	YW	ADG	DMI	M	ME	HPG	CEM	ST	MARB	YG	CW	REA	FAT										
12	-1.2	73	112	0.24	0.83	21	-2	17	6	20	0.48	0.09	17	0.07	0.03	64%	61%	22%	33%	50%	62%	90%	23%	1%	80%	2%	36%	64%	74%	61%	77%

5L BOURNE 117-48A  
**5L FOREMAN 2174-370E**  
5L ADINA 1551-2174

RIDGE PROVISION 6013  
**HRR ESTONIA 815**  
HRR ESTONIA 623

5L ADVANTAGE 3267-221Y  
5L ROXIE 854-117  
O C C EMBLAZON 854E  
5L ADINA 525-1551  
5L ADVANTAGE 3267-221Y  
RIDGE MONA 8162-2057  
RED HILL B571 JULIAN 84S  
HRR ESTONIA 0106

BW	84
ADJ WW	631
WR	102
ADJ YW	1026
YR	96
SCROTAL	33.4
DAM'S MPPA	97

HRR Forman 4248 is a dark red, straight topped, moderate birth weight 5L Foreman 2174-370E son. His modest sized dam, HRR Estonia 815 is a really solid, attractive Ridge Provision 6013 daughter that is tidy uddered and stands on good feet.



**LOT 58**



**HRR BLOCKANA 807, DAM**



## LOT 58 HRR KEGGER 4258

ProS	HB	GM	BIRTH DATE: 2/26/24 REG. #: 4958270 CAT: 1A 100%																												
103	65	37	52%	26%	78%	CED	BW	WW	YW	ADG	DMI	M	ME	HPG	CEM	ST	MARB	YG	CW	REA	FAT										
9	0.4	59	82	0.14	0.14	23	3	12	3	20	0.56	0.04	5	0.00	0.02	90%	87%	74%	90%	97%	4%	74%	44%	51%	97%	4%	24%	33%	95%	75%	55%

5L BODY BUILDER 4434-68D  
**RIDGE KEGGER 210Z**  
RIDGE BLOCKANA 9160-8085

RIDGE PRAGMATIC 6098  
**HRR BLOCKANA 807**  
HRR BLOCKANA 609

5L BLOCKADE 2218-30B  
5L RED BIRD 411-4434  
5L BOURNE 117-48A  
RIDGE BLOCKANA R91-9160  
5L TOPGUN 560-65B  
RIDGE SHEILA 009-2088  
XO CROWFOOT 0102X  
HRR BLOCKANA 013

BW	82
ADJ WW	621
WR	101
ADJ YW	995
YR	93
SCROTAL	34.9
DAM'S MPPA	98

HRR Kegger 4258 is dark red and has a moderate birth weight and good performance. His sire, Ridge Kegger 210Z is a 5L Body Builder 4434-68D son that is new to our program. Combine that with his Ridge Pragmatic 6098 dam, HRR Blockana 807 and you should have yourself a cow maker.





**LOT 59**



**HRR PAULA 994, DAM**



**LOT 59**

## HRR FOREMAN 4273

ProS	HB	GM
58	27	31
97%	92%	87%

BIRTH DATE: **2/28/24** REG. #: **4958348** CAT: **1A 100%**

CED	BW	WW	YW	ADG	DMI	M	ME	HPG	CEM	ST	MARB	YG	CW	REA	FAT
12	-2.8	51	79	0.17	0.45	23	1	9	5	13	0.33	-0.02	7	0.15	0.01
68%	31%	93%	92%	89%	20%	78%	33%	88%	91%	72%	76%	15%	93%	45%	41%

5L BOURNE 117-48A  
**5L FOREMAN 2174-370E**  
 5L ADINA 1551-2174

BIRNIE EXPRESS 353A  
**HRR PAULA 994**  
 HRR PAULA 693

5L ADVANTAGE 3267-221Y  
 5L ROXIE 854-117  
 O C C EMBLAZON 854E  
 5L ADINA 525-1551  
 MLK CRK EXPRESS 9127  
 OTT-MONA-758-970  
 5L BLAZIN RED 1354-6166  
 SODAK PAULA 6139-96

<b>BW</b>	88
<b>ADJ WW</b>	630
<b>WR</b>	102
<b>ADJ YW</b>	932
<b>YR</b>	87
<b>SCROTAL</b>	33.9
<b>DAM'S MPPA</b>	102

*HRR Foreman 4273 is a dark red 5L Foreman 2174-370E son with good performance and a solid dam, HRR Paula 994 with a 102 MPPA.*



**LOT 60**



**HRR MONA 9175, DAM**



**LOT 60**

## HRR FOREMAN 4301

ProS	HB	GM
99	81	18
58%	8%	97%

BIRTH DATE: **3/3/24** REG. #: **4958378** CAT: **1A 100%**

CED	BW	WW	YW	ADG	DMI	M	ME	HPG	CEM	ST	MARB	YG	CW	REA	FAT
14	-2.5	62	87	0.15	0.38	23	1	13	7	19	0.36	0.10	8	-0.14	0.02
32%	36%	64%	84%	95%	14%	80%	35%	29%	57%	6%	71%	67%	93%	93%	63%

5L BOURNE 117-48A  
**5L FOREMAN 2174-370E**  
 5L ADINA 1551-2174

5L ADVANTAGE 3267-221Y  
**HRR MONA 9175**  
 OTT-MONA-758-970

5L ADVANTAGE 3267-221Y  
 5L ROXIE 854-117  
 O C C EMBLAZON 854E  
 5L ADINA 525-1551  
 BUF CRK THE RIGHT KIND U199  
 5L ADINA 195-3267  
 SELL COPPERTOP 608  
 OTT-MONA-303-758

<b>BW</b>	88
<b>ADJ WW</b>	635
<b>WR</b>	103
<b>ADJ YW</b>	1001
<b>YR</b>	94
<b>SCROTAL</b>	35.1
<b>DAM'S MPPA</b>	99

*HRR Lancaster 4301 is a dark red 5L Foreman 2174-370E son going back to OTT-Mona-758-970 that produced until she was 17 years old.*



**LOT 61**



**HRR INATEXXI 901, DAM**



**LOT 61**

## HRR REDMANS LEGEND 4268

ProS	HB	GM
0	0	44
0%	0%	66%

BIRTH DATE: **2/27/24** REG. #: **4975245** CAT: **3 100%**

CED	BW	WW	YW	ADG	DMI	M	ME	HPG	CEM	ST	MARB	YG	CW	REA	FAT
12	-1.5	62	84	0.14	0.63	23	0	0	7	11	0.36	-0.10	30	0.43	-0.02
66%	56%	65%	87%	97%	38%	77%	0%	0%	57%	89%	71%	2%	26%	6%	2%

RED RMJ REDMAN 1T  
**RIDGE REDMANS LEGEND 1015**  
 RIDGE MONA 2057-4412

**HRR INATEXXI 901**

5L NORSEMAN KING 2291  
 CROWFOOT KURUBA 4033P  
 5L LEGEND 1553-425V  
 RIDGE MONA 8162-2057

<b>BW</b>	88
<b>ADJ WW</b>	614
<b>WR</b>	100
<b>ADJ YW</b>	1050
<b>YR</b>	100
<b>SCROTAL</b>	35.0
<b>DAM'S MPPA</b>	N/A

*This quiet, thick topped, dark red Ridge Redmans Legend 1015 son has looked good through out his callhood and his dam, HRR Inatexxi 901Q did a good job raising him. She is a really attractive Birnie Express 353A aka "Rock Star" daughter that has come into her own. She keeps getting better and better each year. We are not able to identify the entire maternal pedigree but he is 100% Red Angus. His dam raised a good one last year as well.*



LOT 62



LOT 62



HRR FREYJA 416, DAM



## HRR JULIAN 4270

ProS	HB	GM
111	99	12
40%	1%	99%

BIRTH DATE: 2/28/24 REG. #: 4958160 CAT: 1A 100%

CED	BW	WW	YW	ADG	DMI	M	ME	HPG	CEM	ST	MARB	YG	CW	REA	FAT
15	-3.5	49	72	0.14	-0.04	28	-6	13	7	21	0.43	0.09	-16	-0.24	0.05
21%	20%	95%	96%	97%	1%	31%	15%	22%	58%	1%	47%	62%	99%	97%	92%

BECKTON JULIAN GG B571  
**RED HILL B571 JULIAN 84S**  
 BECKTON BARMAID M554 CH

TR JULIAN ZT262  
**HRR FREYJA 416**  
 HRR FREYJA 298

BKT JULIAN 7526 G  
 BKT MARTA 9A13 JL  
 BECKTON CHAMP R3 H338  
 BECKTON BARMAID H031 HR  
 BECKTON JULIAN GG B571  
 TR LANA G760  
 RED RMJ REDMAN 1T  
 HRR FREYJA 308

BW	76
ADJ WW	615
WR	100
ADJ YW	1043
YR	98
SCROTAL	34.0
DAM'S MPPA	103

HRR Julian 4270 is a sleep-all-night heifer bull while ranking in the top 10% for ProS and HB, STAY, HPG, CEM, ME. His Sire, Red Hill B571 Julian 84S is a great producer of solid functional cows.

## North Dakota STOCKMEN'S ASSOCIATION



*Chuck and Annette Steffan received the prestigious Rancher of the Year award at the 95th Annual North Dakota Stockmen's Association Convention.*

"Thank you to the members of the North Dakota Stockmen's Association for this wonderful and unexpected honor. We are very humbled and honored to receive this award."





## BRED COWS

As you study this group of young cows there is not one that weaned off a below average weaning weight on their first calf. Our drought/hail conditions in the summer of 2024 put us in a position where we had to reduce the herd so here is a potential opportunity to tap into some really solid young cows. They were exposed to three bulls - Ridge Avalanche 2051, Ridge RIZZ 3089 and MLK Crk Ultra Cool 3214 until July 15th, then exposed to the additional clean up bulls when we turned them with the mature cows in the hills. We can provide whatever info/dna needed to identify the sires to the resulting calves. These cows were pregnancy tested by Dr. Bleaux Johnson, West River Veterinary Clinic on August 22nd to calve between March 20 and April 20, 2025.



**RIDGE AVALANCHE 2051**



SERVICE SIRE **A**

### RIDGE AVALANCHE 2051

BIRTH DATE: **2/3/22** REG. #: **4621947** CAT: **1A 100%**

HB	GM	CED	BW	WW	YW	MK	ME	HPG	CEM	ST	MB	YG	CW	REA	Fat
91	44	10	-1.8	57	86	26	-5	12	7	19	0.58	-0.05	3	0.12	0.00

5L NORSEMAN KING 2291  
**RED RMJ REDMAN 1T**  
CROWFOOT KURUBA 4033P

5L AVALANCHE 525-1014  
**RIDGE LILA 8132-0017**  
RIDGE LILA 101-8132

VGW KING OF THE WEST  
NORSEMAN 1312 PJM  
O C C HUNTER 928H  
RED CROWFOOT KURUBA 2030M  
5L AMBUSH 587-5292  
5L ADINA 293-525  
5L GRAND EXPRESS 453-5655  
RIDGE LILA 979-101

BW	ET
ADJ WW	671
WR	ET
ADJ YW	1271
YR	ET



**RIDGE RIZZ 3089**



SERVICE SIRE **B**

### RIDGE RIZZ 3089

BIRTH DATE: **2/8/23** REG. #: **4808421** CAT: **1A 100%**

HB	GM	CED	BW	WW	YW	MK	ME	HPG	CEM	ST	MB	YG	CW	REA	Fat
81	60	15	-3.8	60	91	29	-2	15	9	16	0.74	0.02	10	0.03	0.01

RIDGE PROVISION 6013  
**MLK CRK SOLUTION 0405**  
MLK CRK SHEBA 900

HRR FRANCHISE 8211  
**HRR COLLEEN 004**  
HRR COLLEEN 8101

5L ADVANTAGE 3267-221Y  
RIDGE MONA 8162-2057  
5L GRAND EXPRESS 453-5655  
MLK CRK SHEBA 403  
SPUR FRANCHISE OF GARTON  
HRR MONA 428  
STEADFAST BOAZ T71  
HRR COLLEEN 429

BW	84
ADJ WW	682
WR	108
ADJ YW	1132
YR	106



**MLK CRK ULTRA KOOL 3214**



SERVICE SIRE **C**

### MLK CRK ULTRA KOOL 3214

BIRTH DATE: **2/13/23** REG. #: **4806942** CAT: **1A 100%**

HB	GM	CED	BW	WW	YW	MK	ME	HPG	CEM	ST	MB	YG	CW	REA	Fat
35	52	11	-1.9	64	101	29	7	14	4	14	0.76	0.21	8	-0.21	0.06

5L GOT R DONE 2146-313F  
**5L ULTRA KOOL 1077-86H**  
5L ROXIE 399-1077

RED CROWFOOT REDMAN 3107A  
**MLK CRK THUNDER 9134**  
MLK CRK THUNDER 4109

BECKTON LIKABLE C643 L3  
5L DYNABELLE 1804-2146  
5L THE REAL DEAL 1687-143B  
5L ROXIE 117-399  
RED LAZY MC REDMAN 94Y  
RED CROWFOOT BRNDINA 1103Y  
MLK CRK REDSTONE  
HRR THUNDER 751

BW	90
ADJ WW	662
WR	112
ADJ YW	1180
YR	114





**LOT 63**

**HRR BLOCKANA 013, DAM**



**LOT 63**

## HRR BLOCKANA 232

ProS	HB	GM
58	41	17
94%	73%	95%

BIRTH DATE: **2/20/22** REG. #: **4637191** CAT: **1A 100%**

CED	BW	WW	YW	ADG	DMI	M	ME	HPG	CEM	ST	MARB	YG	CW	REA	FAT
8	0.7	67	94	0.17	0.44	28	-10	10	2	13	0.16	0.10	23	-0.08	0.01
93%	87%	37%	64%	87%	26%	27%	6%	67%	98%	74%	94%	67%	41%	78%	32%

RED MINBURN COPENHAGEN 3Y  
**RED U-2 AUTHENTIC 139A**  
 RED U-2 STORMY 7202T

STEADFAST BOAZ T71  
**HRR BLOCKANA 013**  
 HRR BLOCKANA 845

RED RMJ REDMAN 1T  
 MINBURN MAY 112M  
 RED U-2 BIG LEAGUE 544R  
 RED U-2 STORMY 901J  
 MUSHRUSH ROCKET P016  
 MUSHRUSH LANA LT R040  
 SHOCCO DATA  
 FEDES BLOCKANA 940

BW	ET
ADJ WW	645
WR	ET

*HRR Blockkana 232 is a full sister to the HRR Blockkana 264. She weaned off an above average bull calf with a lighter birthweight than her sister. The RED U-2 Authentic139A daughters have good feet and udders.*



**RED U-2 AUTHENTIC 139A, SIRE TO LOTS 64 & 64**



**LOT 64**

## HRR BLOCKANA 264

ProS	HB	GM
44	28	16
98%	88%	95%

BIRTH DATE: **2/28/22** REG. #: **4637189** CAT: **1A 100%**

CED	BW	WW	YW	ADG	DMI	M	ME	HPG	CEM	ST	MARB	YG	CW	REA	FAT
6	1.7	71	99	0.17	0.50	29	-16	11	-2	13	0.16	0.09	26	0.00	0.01
98%	94%	22%	54%	87%	33%	26%	1%	61%	99%	74%	94%	61%	32%	63%	32%

RED MINBURN COPENHAGEN 3Y  
**RED U-2 AUTHENTIC 139A**  
 RED U-2 STORMY 7202T

STEADFAST BOAZ T71  
**HRR BLOCKANA 013**  
 HRR BLOCKANA 845

RED RMJ REDMAN 1T  
 MINBURN MAY 112M  
 RED U-2 BIG LEAGUE 544R  
 RED U-2 STORMY 901J  
 MUSHRUSH ROCKET P016  
 MUSHRUSH LANA LT R040  
 SHOCCO DATA  
 FEDES BLOCKANA 940

BW	ET
ADJ WW	628
WR	ET

*HRR Blockkana 264 is a RED U-2 Authentic 139A x HRR Blockkana 013 donor dam combination. Her first calf is lot 31, HRR RAD 4211 in the bull sale. Our RED U-2 Authentic139A daughters have good udders and have above average performance.*



**LOT 65**

**HRR ZINA 802, DAM**



**LOT 65**

## HRR ZINA 228

ProS	HB	GM
93	64	30
60%	34%	80%

BIRTH DATE: **2/19/22** REG. #: **4635335** CAT: **1A 100%**

CED	BW	WW	YW	ADG	DMI	M	ME	HPG	CEM	ST	MARB	YG	CW	REA	FAT
19	-5.2	54	78	0.15	0.41	25	-18	14	10	11	0.41	0.09	9	-0.11	0.02
2%	5%	83%	90%	94%	24%	56%	1%	17%	8%	90%	46%	58%	84%	82%	54%

5L GRAND EXPRESS 453-5655  
**MLK CRK EXPRESS 9127**  
 MLK CRK SHEBA 043

RIDGE PRAGMATIC 6098  
**HRR ZINA 802**  
 HRR ZINA 672

5L NORSEMAN EXPRESS  
 5L RUBY 01-453  
 BJR PROOF 224-159  
 MLK CRK SHEBA 869  
 5L TOPGUN 560-658  
 RIDGE SHEILA 009-2088  
 RIDGE RED EDGE 4019  
 HRR ZINA 2112

BW	70
ADJ WW	612
WR	99

*HRR Zina 228 is a Mlk Crk Express 9127 x Ridge Pragmatic 6098 daughter. She weaned off a daughter on her first go with a 103 weaning weight ratio. We have retained her heifer calf in the herd. This cow goes back to some legendary cows in the pedigree. MLK CRK Express 9127 and Ridge Pragmatic 6098 daughters have great feet and udders. We would not normally let these kind go.*





**LOT 66**



**HRR COLLEEN 049, DAM**



**LOT 66**

## HRR COLLEEN 226

ProS	HB	GM
74	58	17
83%	44%	95%

BIRTH DATE: **2/19/22** REG. #: **4635219** CAT: **1A 100%**

CED	BW	WW	YW	ADG	DMI	M	ME	HPG	CEM	ST	MARB	YG	CW	REA	FAT
17	-6.2	57	84	0.17	0.40	29	5	8	9	17	0.33	0.05	1	-0.06	0.02
7%	2%	73%	83%	89%	23%	26%	57%	92%	15%	30%	64%	37%	96%	75%	63%

5L GRAND EXPRESS 453-5655  
**MLK CRK EXPRESS 9127**  
 MLK CRK SHEBA 043

WFL MERLIN 018A  
**HRR COLLEEN 049**  
 HRR COLLEEN 155

5L NORSEMAN EXPRESS  
 5L RUBY 01-453  
 BJR PROOF 224-159  
 MLK CRK SHEBA 869  
 LJC MERLIN T179  
 WFL COMMITMENT 042Y  
 MUSHRUSH LTJULIAN LG S005  
 HRR COLLEEN 812

BW	70
ADJ WW	664
WR	108

*HRR Collenn 226 is Milk Crk Express 9127 daughter whose phenotype is a mirror image of her half sister HRR Zina 228. They will both make moderate efficient cows. Her first calf weaned off at 103 percent above average and we have kept her in the replacement pen. Help yourself to some solid young cows.*



**LOT 67**



**MLK CRK STEWARD 7334, SIRE**



**LOT 67**

## HRR THUNDER 260

ProS	HB	GM
112	53	60
32%	53%	22%

BIRTH DATE: **2/26/22** REG. #: **4635323** CAT: **1A 100%**

CED	BW	WW	YW	ADG	DMI	M	ME	HPG	CEM	ST	MARB	YG	CW	REA	FAT
10	-1.7	64	94	0.19	0.40	25	-3	12	5	14	0.53	0.00	26	0.47	0.03
79%	48%	46%	64%	80%	23%	58%	19%	35%	78%	66%	23%	18%	30%	3%	80%

MLK CRK ADVOCATE 4304  
**MLK CRK STEWARD 7334**  
 MLK CRK THUNDER 499

RIDGE TRAVELER 5412  
**HRR THUNDER 740**  
 HRR THUNDRESS 435

5L SECRET AGENT 117-229Z  
 MLK CRK SHEBA 1014  
 ANDRAS FUSION R236  
 HRR THUNDER 751  
 RIDGE LEGEND 2069  
 RIDGE CASEY 8034-3032  
 FEDDES MONTANA X44  
 HRR THUNDRESS 741

BW	80
ADJ WW	606
WR	98

*HRR Thunder 260 is a Milk Crk Steward 7334 dam that did well on her first calf with a 104 weaning weight ratio, her dam, HRR Thunder 740 is the mother to lot 29, HRR Navigator 4226 and has done a really nice job for us at HRR with 367 calving interval, 95 BW, 100 WW and 100 YW. As you can see, these young cows are bonafide producers.*



**LOT 68**



**HRR RACHEL 736, DAM**



**LOT 68**

## HRR RACHEL 2153

ProS	HB	GM
122	69	52
21%	25%	34%

BIRTH DATE: **3/24/22** REG. #: **4635321** CAT: **1A 100%**

CED	BW	WW	YW	ADG	DMI	M	ME	HPG	CEM	ST	MARB	YG	CW	REA	FAT
5	1.9	77	112	0.22	0.63	23	8	15	3	19	0.74	0.04	14	0.25	0.04
99%	95%	9%	26%	61%	46%	66%	76%	11%	96%	13%	5%	32%	73%	17%	88%

MLK CRK ADVOCATE 4304  
**MLK CRK STEWARD 7334**  
 MLK CRK THUNDER 499

BUF CRK THE RIGHT KIND U199  
**HRR RACHEL 736**  
 HRR RACHEL 153

5L SECRET AGENT 117-229Z  
 MLK CRK SHEBA 1014  
 ANDRAS FUSION R236  
 HRR THUNDER 751  
 BUF CRK LANCER R017  
 BUF CRK SHOSHONE R353  
 5L NORSEMAN KING 2291  
 HRR RACHEL 794

BW	90
ADJ WW	656
WR	106

*HRR Rachel 2153 is a Milk Crk Steward 7334 daughter going back to a Buf Crk The Right Kind U199 dam. HRR Rachel 2153s first calf weaned off with a 106 ratio. She has 9 EPDs ranking in the top 20% of the breed.*





**LOT 69**



**HRR ESTONIA 520, DAM**



**LOT 69**

## HRR ESTONIA 276

ProS	HB	GM
61	31	29

BIRTH DATE: **3/1/22** REG. #: **4635273** CAT: **1A 100%**

93%	85%	80%													
CED	BW	WW	YW	ADG	DMI	M	ME	HPG	CEM	ST	MARB	YG	CW	REA	FAT
16	-2.8	64	99	0.22	0.52	29	-17	12	6	8	0.45	0.00	-1	0.06	0.02
12%	29%	49%	54%	60%	35%	23%	1%	49%	66%	98%	37%	17%	97%	50%	65%

LJC MERLIN T179  
**WFL MERLIN 018A**  
 WFL COMMITMENT 042Y

XO CROWFOOT 0102X  
**HRR ESTONIA 520**  
 HRR ESTONIA 197

LJC MISSION STATEMENT P27  
 BUF CRK REDPRIDE N179  
 BROWN COMMITMENT S7206  
 WFL JEWELMAKER 9024  
 RED CROWFOOT MOONSHINE 8081U  
 XO CROWFOOT BLACKBIRD 8810U  
 HRR KNIGHT 956  
 HRR BANNA 758

<b>BW</b>	<b>74</b>
<b>ADJ WW</b>	<b>627</b>
<b>WR</b>	<b>102</b>

*HRR Estonia 276 is WFL Merlin 018A daughter that weaned off a bull calf with a 105 WWR.*



**LOT 70**



**HRR FREYJA 448, DAM**



**LOT 70**

## HRR FREYJA 287

ProS	HB	GM
32	5	27

BIRTH DATE: **3/2/22** REG. #: **4635267** CAT: **1A 100%**

99%	98%	84%													
CED	BW	WW	YW	ADG	DMI	M	ME	HPG	CEM	ST	MARB	YG	CW	REA	FAT
13	-3.2	75	111	0.23	0.45	32	11	11	7	8	0.32	-0.11	5	0.19	-0.02
40%	23%	13%	27%	53%	28%	9%	87%	65%	46%	98%	67%	2%	92%	25%	3%

LJC MERLIN T179  
**WFL MERLIN 018A**  
 WFL COMMITMENT 042Y

TR JULIAN ZT262  
**HRR FREYJA 448**  
 HRR FREYJA 2114

LJC MISSION STATEMENT P27  
 BUF CRK REDPRIDE N179  
 BROWN COMMITMENT S7206  
 WFL JEWELMAKER 9024  
 BECKTON JULIAN GG B571  
 TR LANA G760  
 MLK CRK KNIGHT 7153  
 HRR FREYJA 732

<b>BW</b>	<b>80</b>
<b>ADJ WW</b>	<b>656</b>
<b>WR</b>	<b>106</b>

*HRR Freyja 287 is a dark red larger framed WFL Merlin 018A daughter that weaned off a bull on the first try with a 111 WWR.*



**LOT 71**



**HRR BLOCKANA 838, DAM**



**LOT 71**

## HRR BLOCKANA 2110

ProS	HB	GM
150	110	40

BIRTH DATE: **3/8/22** REG. #: **4635357** CAT: **1A 100%**

4%	1%	60%													
CED	BW	WW	YW	ADG	DMI	M	ME	HPG	CEM	ST	MARB	YG	CW	REA	FAT
21	-6.8	55	86	0.19	0.63	28	-2	13	12	21	0.62	0.09	3	-0.19	0.02
1%	1%	80%	80%	78%	46%	29%	22%	25%	1%	3%	12%	59%	95%	91%	58%

MLK CRK EXPRESS 9127  
**HRR EXPRESS 5142**  
 HRR LAKOTA 115

5L TOPGUN 560-65B  
**HRR BLOCKANA 838**  
 HRR BLOCKANA 420

5L GRAND EXPRESS 453-5655  
 MLK CRK SHEBA 043  
 SHOCO DATA  
 MLK CRK LAKOTA 850  
 5L ADVANTAGE 3267-221Y  
 5L BLACK ADINA 525-560  
 5L LEGEND 1553-425V  
 HRR BLOCKANA 097

<b>BW</b>	<b>64</b>
<b>ADJ WW</b>	<b>600</b>
<b>WR</b>	<b>97</b>

*HRR Blockana 2110 is a HRR Express 5142 daughter that weaned off a heifer calf the first time around with a 103 WR which we retained in the herd.*





**LOT 72**



**HRR BANA 002, MGD**



**LOT 72**

## HRR BANA 2113

ProS	HB	GM
136	104	32

BIRTH DATE: **3/10/22** REG. #: **4635393** CAT: **1A 100%**

CED	BW	WW	YW	ADG	DMI	M	ME	HPG	CEM	ST	MARB	YG	CW	REA	FAT
10	0.4	72	109	0.23	0.66	24	7	12	7	24	0.30	0.16	24	-0.04	0.03
77%	83%	20%	31%	49%	50%	63%	69%	42%	56%	1%	71%	87%	38%	71%	82%

RIDGE COMPASS 7087  
**RIDGE NAVIGATOR 0039**  
 RIDGE HOBO 016-9027

RIDGE TRAVELER 5412  
**HRR BANA 942**  
 HRR BANA 002

RRA IMPACT 505  
 RIDGE LILA 8132-0017  
 5L SIGNATURE 5615  
 SIXL MS HOBO 016  
 RIDGE LEGEND 2069  
 RIDGE CASEY 8034-3032  
 BUF CRK LANCER-F L297  
 HRR BANA 833

<b>BW</b>	<b>86</b>
<b>ADJ WW</b>	<b>634</b>
<b>WR</b>	<b>103</b>

*HRR Bana 2113 is Ridge Navigator 0039 daughter that had above average individual performance as a calf and ranks high in maternal indicies. We retained her first daughter in the replacement pen.*



**LOT 73**



**HRR BLOCKANA 609, DAM**



**LOT 73**

## HRR BLOCKANA 234

ProS	HB	GM
112	67	45

BIRTH DATE: **2/21/22** REG. #: **4635289** CAT: **1A 100%**

CED	BW	WW	YW	ADG	DMI	M	ME	HPG	CEM	ST	MARB	YG	CW	REA	FAT
16	-2.5	55	88	0.21	0.56	27	-1	15	5	17	0.50	0.14	13	-0.12	0.04
13%	34%	81%	77%	69%	39%	38%	25%	10%	76%	33%	28%	83%	75%	84%	84%

RIDGE CROSSFIRE 4009  
**RIDGE CROSSFIRE 6107**  
 RIDGE BLOCKANA R91-9501

XO CROWFOOT 0102X  
**HRR BLOCKANA 609**  
 HRR BLOCKANA 013

5L BLAZIN RED 1354-6166  
 BARGER F7  
 3S RAMBLAZON 6508  
 SHOCO BLOCKANA R91  
 RED CROWFOOT MOONSHINE 8081U  
 XO CROWFOOT BLACKBIRD 8810U  
 STEADFAST BOAZ T71  
 HRR BLOCKANA 845

<b>BW</b>	<b>78</b>
<b>ADJ WW</b>	<b>600</b>
<b>WR</b>	<b>97</b>

*HRR Blockana 234 is a Ridge Crossfire 6107 x RED XO Crowfoot 0102x combination that weaned off a bull with a 102 ratio. Her dam, HRR Blockana 609 is still in the herd having raised 7 calves on a 366 day calving interval with a 97 BW, 99WW, 102YW. HRR Blockana 609's three bulls all made it into previous production sales.*



**LOT 74**



**HRR BLOCKANA 867, DAM**



**LOT 74**

## HRR BLOCKANA 2137

ProS	HB	GM
98	56	41

BIRTH DATE: **3/18/22** REG. #: **4635363** CAT: **1A 100%**

CED	BW	WW	YW	ADG	DMI	M	ME	HPG	CEM	ST	MARB	YG	CW	REA	FAT
11	0.6	68	99	0.19	0.38	22	0	15	5	15	0.44	0.22	26	0.03	0.06
64%	86%	31%	54%	79%	21%	73%	31%	12%	85%	59%	39%	97%	30%	57%	99%

5L BLAZIN RED 1354-6166  
**RIDGE CROSSFIRE 4009**  
 BARGER F7

RIDGE LEGEND 4094  
**HRR BLOCKANA 867**  
 HRR BLOCKANA 566

5L BLAZIN HOBO 404-5654  
 5L REBA 60-1354  
 HLH HOBO 105 306  
 LBC D5809  
 5L LEGEND 1553-425V  
 RIDGE SARA F7-8025  
 HRR RAYMOND 975  
 HRR BLOCKANA 959

<b>BW</b>	<b>84</b>
<b>ADJ WW</b>	<b>658</b>
<b>WR</b>	<b>107</b>

*HRR Blockana 2137 is a performance dam going back to Ridge Crossfire 4009 and Ridge Legend 4094 breeding. She weaned a bull on her first try with a 112 ratio.*





**LOT 75**

**MLK CRK FIREFLY 6219, MGD**



**LOT 75**

## HRR FIREFLY 400

ProS	HB	GM													
156	102	54													
3%	1%	40%													
			BIRTH DATE: 2/1/24			REG. #: 4958604			CAT: 1A 100%						
CED	BW	WW	YW	ADG	DMI	M	ME	HPG	CEM	ST	MARB	YG	CW	REA	FAT
19	-5.6	69	108	0.24	0.96	29	-1	18	10	18	0.71	0.14	18	-0.12	0.03
1%	3%	36%	42%	50%	75%	17%	26%	1%	7%	10%	9%	84%	73%	91%	67%

5L BOURNE 117-48A  
**DAHLKE ROCKEFELLER 009H**  
 DAHLKE MS HILTON 13F ET  
 RIDGE PRAGMATIC 6098  
**HRR FIREFLY 233**  
 MLK CRK FIREFLY 6219

5L ADVANTAGE 3267-221Y  
 5L ROXIE 854-117  
 BIEBER CL ATOMIC C218  
 DAHLKE MS HILTON 263C  
 5L TOPGUN 560-65B  
 RIDGE SHEILA 009-2088  
 JACOBSON BLAZIN ON 0057  
 MLK CRK FIREFLY 974

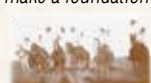
<b>BW</b>	58
<b>ADJ WW</b>	548
<b>WR</b>	100

*HRR Firefly 400 is a dark red genetic gem from the now deceased and rare Dahlke Rockefeller 009H stemming from her granddam, Mlk Crk 6219 and by Ridge Pragmatic 6098. This was the first calf born in 2024 with a low birthweight as expected, her dam, HRR Firefly 233 raised her to herd average at weaning. Study the EPD rankings across the board. We should keep her but here is your opportunity to tap into a heifer that should make a foundation female in the future. She is as pretty as they get.*



**LOT 76**

**HRR EILEEN 048, MGD**



**LOT 76**

## HRR EILEEN 4108

ProS	HB	GM													
111	89	22													
39%	4%	95%													
			BIRTH DATE: 3/3/24			REG. #: 4958568			CAT: 1A 100%						
CED	BW	WW	YW	ADG	DMI	M	ME	HPG	CEM	ST	MARB	YG	CW	REA	FAT
18	-5.1	70	108	0.24	0.91	29	-3	15	9	17	0.19	-0.04	18	0.13	-0.01
4%	6%	31%	41%	54%	71%	23%	20%	8%	11%	20%	95%	11%	72%	48%	3%

RIDGE TOPGUN 9513  
**RIDGE JD 2510**  
 RIDGE BLOCKANA 8085-0412  
 MLK CRK PROVISION 0408  
**HRR EILEEN 2117**  
 HRR EILEEN 048

5L TOPGUN 560-65B  
 RIDGE AQUILA 552-8066  
 RIDGE EMPIRE 0028  
 RIDGE BLOCKANA 9160-8085  
 RIDGE PROVISION 6013  
 MLK CRK SHEBA 900  
 RIDGE TRAVELER 5412  
 HRR EILEEN 9159

<b>BW</b>	60
<b>ADJ WW</b>	640
<b>WR</b>	117

*This dark red heifer is one of our favorites in this group. She has super low birthweight yet much above average performance going back to HRR Eileen 9156 cow family who was one of the first black red carrier cows we owned.*



**LOT 77**

**HRR SHEBA 926, MGD**



**LOT 77**

## HRR SHEBA 407

ProS	HB	GM													
138	96	42													
9%	2%	69%													
			BIRTH DATE: 2/7/24			REG. #: 4958652			CAT: 1A 100%						
CED	BW	WW	YW	ADG	DMI	M	ME	HPG	CEM	ST	MARB	YG	CW	REA	FAT
16	-2.6	72	105	0.20	0.83	28	-6	10	10	19	0.51	0.14	26	-0.09	0.02
12%	35%	24%	48%	77%	62%	27%	15%	85%	4%	7%	31%	85%	38%	88%	47%

MLK CRK EXPRESS 9127  
**HRR EXPRESS 5142**  
 HRR LAKOTA 115  
 RIDGE NAVIGATOR 0039  
**HRR SHEBA 297**  
 HRR SHEBA 926

5L GRAND EXPRESS 453-5655  
 MLK CRK SHEBA 043  
 SHOCO DATA  
 MLK CRK LAKOTA 850  
 RIDGE COMPASS 7087  
 RIDGE HOBO 016-9027  
 RIDGE PROVISION 6013  
 HRR SHEBA 2132

<b>BW</b>	73
<b>ADJ WW</b>	603
<b>WR</b>	110

*HRR Sheba 407 is a daughter out of HRR Express 5142 and Ridge Navigator 0039 on the bottom side. She has great EPD rankings in the breed and performance at weaning. She traces back to HRR Sheba 2132 donor dam on the bottom side of the pedigree. She should make a great cow.*





**LOT 78**



**LOT 78**

## HRR MISSY 414

ProS	HB	GM
143	98	44
7%	1%	65%

BIRTH DATE: **2/11/24** REG. #: **4958644** CAT: **1A 100%**

CED	BW	WW	YW	ADG	DMI	M	ME	HPG	CEM	ST	MARB	YG	CW	REA	FAT
14	-3.8	62	88	0.16	0.40	30	-3	16	9	18	0.66	0.06	8	0.00	0.03
29%	17%	66%	82%	92%	16%	12%	20%	4%	15%	10%	13%	48%	93%	75%	69%

5L BOURNE 117-48A  
**DAHLKE ROCKEFELLER 009H**  
 DAHLKE MS HILTON 13F ET

RED RMJ REDMAN 1T  
**HRR MISSY 283**  
 HRR MISSY 853

- 5L ADVANTAGE 3267-221Y
- 5L ROXIE 854-117
- BIEBER CL ATOMIC C218
- DAHLKE MS HILTON 263C
- 5L NORSEMAN KING 2291
- CROWFOOT KURUBA 4033P
- RIDGE PROVISION 6013
- HRR MISSY 055

<b>BW</b>	<b>65</b>
<b>ADJ WW</b>	<b>605</b>
<b>WR</b>	<b>111</b>

*HRR Missy 414 is a tough Lot to part with...414 is out of the now deceased and rare Dahlke Rockefeller 009H sire and a RED RMJ Redman 1T dam, HRR Missy 853. Calving ease with performance and carcass. This is a one of a kind opportunity here.*



**LOT 79**



**LOT 79**

## HRR BLOCKANA 439

ProS	HB	GM
42	31	11
99%	88%	99%

BIRTH DATE: **2/22/24** REG. #: **4958698** CAT: **1A 100%**

CED	BW	WW	YW	ADG	DMI	M	ME	HPG	CEM	ST	MARB	YG	CW	REA	FAT
7	0.8	65	92	0.17	0.37	28	-10	10	2	12	0.10	0.15	23	-0.19	0.01
97%	90%	54%	77%	91%	14%	24%	11%	72%	99%	83%	99%	88%	53%	96%	38%

RED MINBURN COPENHAGEN 3Y  
**RED U-2 AUTHENTIC 139A**  
 RED U-2 STORMY 7202T

STEADFAST BOAZ T71  
**HRR BLOCKANA 013**  
 HRR BLOCKANA 845

- RED RMJ REDMAN 1T
- MINBURN MAY 112M
- RED U-2 BIG LEAGUE 544R
- RED U-2 STORMY 901J
- MUSHRUSH ROCKET P016
- MUSHRUSH LANA LT R040
- SHOCO DATA
- FEDDES BLOCKANA 940

<b>BW</b>	<b>ET</b>
<b>ADJ WW</b>	<b>540</b>
<b>WR</b>	<b>ET</b>

*HRR Blockana 439 is one of many ET daughters out of our prolific donor dam, HRR Blockana 013 and RED U-2 Authentic 139A. The daughters in production out of this mating are very good performance cows with sound feet and udders.*



**HRR BLOCKANA 013, DAM**



**LOT 80**



**LOT 80**

## HRR JULIA 4150

ProS	HB	GM
91	80	11
69%	8%	99%

BIRTH DATE: **3/23/24** REG. #: **4958300** CAT: **1A 100%**

CED	BW	WW	YW	ADG	DMI	M	ME	HPG	CEM	ST	MARB	YG	CW	REA	FAT
14	-2.1	46	74	0.18	0.40	27	-4	14	7	18	0.15	0.12	4	-0.11	0.04
35%	44%	97%	95%	88%	16%	35%	18%	17%	44%	13%	97%	77%	96%	90%	87%

RED RMJ REDMAN 1T  
**RIDGE REDMANS LEGEND 1015**  
 RIDGE MONA 2057-4412

RED FLYING K MAX 159Y  
**HRR JULIA 857**  
 HRR JULIA 338

- 5L NORSEMAN KING 2291
- CROWFOOT KURUBA 4033P
- 5L LEGEND 1553-425V
- RIDGE MONA 8162-2057
- RED ML MAX 862U
- RED FLYING K ANITA 764T
- STEADFAST BOAZ T71
- LELAND JULIA 8302U

<b>BW</b>	<b>80</b>
<b>ADJ WW</b>	<b>544</b>
<b>WR</b>	<b>100</b>

*HRR Julia 4150 is another young heifer that had good performance and her dam, HRR Julia 857 posts a 101 MPPA.*



**HRR JULIA 857, DAM**





**LOT 81**



**LOT 81**

## HRR FREYJA 481

ProS **117** HB **54** GM **64**  
 30% 49% 23% BIRTH DATE: **2/28/24** REG. #: **4958252** CAT: **1A 100%**

CE	D	BW	WW	YW	ADG	DMI	M	ME	HPG	CEM	ST	MARB	YG	CW	REA	FAT
<b>16</b>	<b>-4.3</b>	<b>52</b>	<b>77</b>	<b>0.16</b>	<b>-0.16</b>	<b>24</b>	<b>-4</b>	<b>13</b>	<b>8</b>	<b>14</b>	<b>0.64</b>	<b>-0.04</b>	<b>8</b>	<b>0.07</b>	<b>0.00</b>	
13%	11%	92%	93%	93%	1%	65%	19%	23%	34%	67%	15%	11%	93%	61%	7%	

5L DEFENDER 560-30Z  
**RIDGE RAD 9075**  
 RIDGE CASEY 978-8034  
 BUF CRK THE RIGHT KIND U199  
**HRR FREYJA 713**  
 HRR FREYJA 547

5L ADVOCATE 817-14W  
 5L BLACK ADINA 525-560  
 5L GRAND EXPRESS 453-5655  
 OTT-CASEY-F412-978  
 BUF CRK LANCER R017  
 BUF CRK SHOSHONE R353  
 STEADFAST BOAZ T71  
 HRR FREYJA 2114

<b>BW</b>	<b>73</b>
<b>ADJ WW</b>	<b>505</b>
<b>WR</b>	<b>92</b>

*This dark red Ridge RAD 9075 daughter has a super nice profile and has come along nicely after weaning. Her BUF CRK The Right Kind U199 dam is a deep ribbed cow with a tidy udder.*



**LOT 82**



**HRR BLOCKANA 097, DAM**



**LOT 82**

## HRR BLOCKANA 4160

ProS **127** HB **80** GM **47**  
 18% 8% 59% BIRTH DATE: **4/4/24** REG. #: **4958446** CAT: **1A 100%**

CE	D	BW	WW	YW	ADG	DMI	M	ME	HPG	CEM	ST	MARB	YG	CW	REA	FAT
<b>15</b>	<b>-2.8</b>	<b>67</b>	<b>106</b>	<b>0.24</b>	<b>1.15</b>	<b>25</b>	<b>-8</b>	<b>17</b>	<b>6</b>	<b>16</b>	<b>0.50</b>	<b>-0.03</b>	<b>18</b>	<b>0.10</b>	<b>-0.02</b>	
17%	31%	46%	46%	49%	89%	55%	13%	2%	77%	29%	33%	12%	71%	55%	3%	

5L DEFENDER 560-30Z  
**RIDGE RAD 9075**  
 RIDGE CASEY 978-8034  
 MLK CRK IMPACT 8255  
**HRR BLOCKANA 097**  
 HRR SHEBA 830

5L ADVOCATE 817-14W  
 5L BLACK ADINA 525-560  
 5L GRAND EXPRESS 453-5655  
 OTT-CASEY-F412-978  
 MUSHRUSH IMPACT Z352  
 MLK CRK BLOCKANNA 273  
 RIDGE TRAVELER 5412  
 HRR SHEBA 2132

<b>BW</b>	<b>77</b>
<b>ADJ WW</b>	<b>634</b>
<b>WR</b>	<b>116</b>

*HRR Blockana 4160 is a Ridge RAD 9075 daughter with really good performance and a nice set of EPDs. She goes back to HRR Sheba 2132, our donor dam. She will have a great udder with her pedigree.*



**LOT 83**



**HRR MONA 773, DAM**



**LOT 83**

## HRR MONA 4132

ProS **137** HB **102** GM **35**  
 10% 1% 81% BIRTH DATE: **3/13/24** REG. #: **4958242** CAT: **1A 100%**

CE	D	BW	WW	YW	ADG	DMI	M	ME	HPG	CEM	ST	MARB	YG	CW	REA	FAT
<b>13</b>	<b>-1.4</b>	<b>72</b>	<b>104</b>	<b>0.20</b>	<b>0.89</b>	<b>23</b>	<b>-7</b>	<b>13</b>	<b>6</b>	<b>20</b>	<b>0.46</b>	<b>0.10</b>	<b>23</b>	<b>0.04</b>	<b>0.02</b>	
45%	57%	26%	52%	79%	69%	73%	14%	29%	75%	3%	41%	68%	56%	67%	61%	

5L DEFENDER 560-30Z  
**RIDGE RAD 9075**  
 RIDGE CASEY 978-8034  
 RIDGE TRAVELER 5407  
**HRR MONA 773**  
 HRR MONA 517

5L ADVOCATE 817-14W  
 5L BLACK ADINA 525-560  
 5L GRAND EXPRESS 453-5655  
 OTT-CASEY-F412-978  
 RIDGE LEGEND 2069  
 RIDGE MONA 970-2505ET  
 XO CROWFOOT 0102X  
 LEWIS MONA 108

<b>BW</b>	<b>83</b>
<b>ADJ WW</b>	<b>538</b>
<b>WR</b>	<b>98</b>

*HRR Mona 4132 is a good performing Ridge RAD 9075 daughter. Her dam, HRR Mona 773 is one of the really good profiling cows in the herd with a 100 MPPA. This mating is a full sister to the 2023 high selling female at the NILE in Billings, MT.*





**LOT 84**



**HRR FREYJA 651, MGD**



**LOT 84**

## HRR FREYJA 4115

ProS	HB	GM
108	48	60

BIRTH DATE: **3/5/24** REG. #: **4958610** CAT: **1A 100%**

44%	60%	30%																	
CED	BW	WW	YW	ADG	DMI	M	ME	HPG	CEM	ST	MARB	YG	CW	REA	FAT				
15	-2.3	77	120	0.27	0.81	27	-1	12	8	12	0.43	-0.11	29	0.38	-0.03				
26%	40%	13%	18%	30%	60%	35%	26%	41%	28%	84%	47%	2%	30%	9%	1%				

RIDGE TOPGUN 9513  
**RIDGE JD 2510**  
 RIDGE BLOCKANA 8085-0412

5L TOPGUN 560-65B  
 RIDGE AQUILA 552-8066  
 RIDGE EMPIRE 0028  
 RIDGE BLOCKANA 9160-8085  
 LIC MERLIN T179  
 WFL COMMITMENT 042Y  
 MLK CRK EXPRESS 9141  
 HRR FREYJA 931

<b>BW</b>	<b>67</b>
<b>ADJ WW</b>	<b>564</b>
<b>WR</b>	<b>103</b>

WFL MERLIN 018A  
**HRR FREYJA 240**  
 HRR FREYJA 651

*HRR Freyja 4115 is a light birthweight heifer with above average performance at weaning coming from the good 651 granddam with a 105 MPPA.*



**LOT 85**



**HRR ZEPPELIN 1254, DAM**



**LOT 85**

## HRR STAR 4153

ProS	HB	GM
36	30	6

BIRTH DATE: **3/30/24** REG. #: **4958484** CAT: **1A 100%**

99%	88%	99%																	
CED	BW	WW	YW	ADG	DMI	M	ME	HPG	CEM	ST	MARB	YG	CW	REA	FAT				
12	0.7	62	87	0.16	0.82	21	-4	6	7	12	0.23	0.06	11	-0.02	0.02				
67%	90%	65%	83%	94%	61%	89%	18%	99%	50%	84%	91%	46%	89%	79%	48%				

RED JRA ESCALADE 76A  
**RED FLYING K ESCALADE 69K**  
 RED FLYING K CHARITY 218C

RED TR ESCALADE 318T  
 RED SHODEREE DUCHESS 88R  
 TONGUE RIVER JESSE AT385  
 RED FLYING K LANA 1A  
 MLK CRK EXPRESS 9127  
 OTT-MONA-758-970  
 MLK CRK EXPRESS 9127  
 HRR STAR 1152

<b>BW</b>	<b>79</b>
<b>ADJ WW</b>	<b>511</b>
<b>WR</b>	<b>93</b>

BIRNIE EXPRESS 353A  
**HRR ZEPPELIN 1254**  
 HRR STAR 310

*HRR Star 4153 is a young heifer with lots of potential – her 12-year-old granddam, HRR Star 310 is still producing at HRR. The Star cow family are phenotypically attractive with volume and good udders.*



**LOT 86**



**HRR PAULA 050, DAM**



**LOT 86**

## HRR PAULA 4113

ProS	HB	GM
93	50	44

BIRTH DATE: **3/5/24** REG. #: **4958428** CAT: **1A 100%**

66%	57%	66%																	
CED	BW	WW	YW	ADG	DMI	M	ME	HPG	CEM	ST	MARB	YG	CW	REA	FAT				
13	-5.2	49	78	0.18	0.34	23	5	12	7	15	0.55	0.12	6	-0.05	0.05				
47%	5%	95%	93%	88%	12%	73%	55%	36%	47%	44%	25%	77%	95%	83%	93%				

JACOBSON MECHANIC 9118  
**JACOBSON MECHANIC 1033**  
 JACOBSON QUEEN 8085

5L CRAFTSMAN 2393-13C  
 JACOBSON SADIE 7122  
 5L BOURNE 117-48A  
 FOREVER QUEEN 948-2657  
 5L GRAND EXPRESS 453-5655  
 MLK CRK SHEBA 043  
 5L BLAZIN RED 1354-6166  
 SODAK PAULA 6139-96

<b>BW</b>	<b>70</b>
<b>ADJ WW</b>	<b>520</b>
<b>WR</b>	<b>95</b>

MLK CRK EXPRESS 9127  
**HRR PAULA 050**  
 HRR PAULA 693

*HRR Paula 4113 is a nice, long-made heifer out of Jacobson Mechanic 1033 with calving ease and good production. The Paula cow family has a lot of daughters in our herd.*





**LOT 87**



**HRR INATEXI 533, MGD**



**LOT 87**

## HRR INATEXI 4128

ProS	HB	GM
92	45	47
68%	66%	58%

BIRTH DATE: **3/11/24** REG. #: **4958526** CAT: **1A 100%**

CED	BW	WW	YW	ADG	DMI	M	ME	HPG	CEM	ST	MARB	YG	CW	REA	FAT
11	-2.4	62	100	0.24	0.68	21	3	14	3	15	0.59	0.09	8	0.28	0.07
75%	38%	66%	60%	51%	44%	91%	46%	17%	97%	47%	20%	63%	93%	23%	99%

JACOBSON MECHANIC 9118  
**JACOBSON MECHANIC 1033**  
 JACOBSON QUEEN 8085

MLK CRK STEWARD 7334  
**HRR INATEXI 179**  
 HRR INATEXI 533

5L CRAFTSMAN 2393-13C  
 JACOBSON SADIE 7122  
 5L BOURNE 117-48A  
 FOREVER QUEEN 948-2657  
 MLK CRK ADVOCATE 4304  
 MLK CRK THUNDER 499  
 XO CROWFOOT 0102X  
 HRR INATEXI 146

BW	81
ADJ WW	546
WR	100

4128 is a nice standout from the Mechanic sire – long sided, strong hipped with moderate birth and average performance in a nice phenotype.



**LOT 88**



**HRR LAKOTA 991, DAM**



**LOT 88**

## HRR LAKOTA 4117

ProS	HB	GM
123	99	23
23%	1%	94%

BIRTH DATE: **3/5/24** REG. #: **4958358** CAT: **1A 100%**

CED	BW	WW	YW	ADG	DMI	M	ME	HPG	CEM	ST	MARB	YG	CW	REA	FAT
13	-2.6	71	106	0.22	0.55	21	4	13	7	22	0.39	0.05	5	-0.12	0.01
47%	35%	28%	46%	69%	29%	89%	50%	27%	62%	1%	58%	37%	96%	91%	31%

5L BOURNE 117-48A  
**5L FOREMAN 2174-370E**  
 5L ADINA 1551-2174

HRR EXPRESS 5142  
**HRR LAKOTA 991**  
 HRR LAKOTA 726

5L ADVANTAGE 3267-221Y  
 5L ROXIE 854-117  
 O C C EMBLAZON 854E  
 5L ADINA 525-1551  
 MLK CRK EXPRESS 9127  
 HRR LAKOTA 115  
 5L ADVANTAGE 3267-221Y  
 HRR LAKOTA 0176

BW	80
ADJ WW	518
WR	95

A Foreman daughter from a 5142 dam with an MPPA of 100. Top-end maternal EPDs.



**LOT 89**



**HRR LAKOTA 003, DAM**



**LOT 89**

## HRR LAKOTA 498

ProS	HB	GM
91	42	49
69%	71%	53%

BIRTH DATE: **2/24/24** REG. #: **4958444** CAT: **2 100%**

CED	BW	WW	YW	ADG	DMI	M	ME	HPG	CEM	ST	MARB	YG	CW	REA	FAT
14	-4.1	54	94	0.25	0.71	25	5	12	7	14	0.44	0.13	16	0.13	0.06
39%	13%	88%	73%	46%	47%	62%	59%	41%	53%	59%	45%	80%	79%	48%	97%

JACOBSON MECHANIC 9118  
**JACOBSON MECHANIC 1033**  
 JACOBSON QUEEN 8085

WFL MERLIN 018A  
**HRR LAKOTA 003**  
 HRR LAKOTA 817

5L CRAFTSMAN 2393-13C  
 JACOBSON SADIE 7122  
 5L BOURNE 117-48A  
 FOREVER QUEEN 948-2657  
 LIC MERLIN T179  
 WFL COMMITMENT 042Y  
 RIDGE PRAGMATIC 6098  
 HRR LAKOTA 630

BW	88
ADJ WW	480
WR	88

HRR Lakota 498s dam, HRR Lakota 817 raised a top bull in our 2023 sale. This Jacobson Mechanic 1033 daughter will make a nice cow.





**LOT 90**



**HRR THELMA 1101, MGD**



**LOT 90**

## HRR THELMA 402

ProS HB GM

**72 56 16**

90% 44% 98%

BIRTH DATE: **2/5/24** REG. #: **4958474** CAT: **1A 100%**

CED	BW	WW	YW	ADG	DMI	M	ME	HPG	CEM	ST	MARB	YG	CW	REA	FAT
<b>13</b>	<b>-3.2</b>	<b>51</b>	<b>66</b>	<b>0.10</b>	<b>0.26</b>	<b>26</b>	<b>-8</b>	<b>11</b>	<b>8</b>	<b>13</b>	<b>0.44</b>	<b>0.00</b>	<b>-3</b>	<b>0.05</b>	<b>0.03</b>

49% 25% 93% 98% 99% 8% 47% 13% 55% 31% 70% 45% 19% 99% 65% 69%

RED RMJ REDMAN 1T  
**RIDGE AVALANCHE 2051**  
RIDGE LILA 8132-0017

RIDGE RAD 9075  
**HRR THELMA 117**  
HRR THELMA 1101

5L NORSEMAN KING 2291  
CROWFOOT KURUBA 4033P  
5L AVALANCHE 525-1014  
RIDGE LILA 101-8132  
5L DEFENDER 560-30Z  
RIDGE CASEY 978-8034  
HRR KNIGHT 956  
HRR THELMA 818

<b>BW</b>	<b>66</b>
<b>ADJ WW</b>	<b>537</b>
<b>WR</b>	<b>98</b>

*HRR Thelma 402 was born at the front of the calving season and her first calving dam, HRR Thelma 117 did a really nice job to post this performance. A opportunity to tap into some really good cow lines with Ridge RAD 9075, Ridge Avalanche 2051 and RED RMJ Redman 1T in the pedigree.*



**LOT 91**



**HRR LAKOTA 917, MGD**



**LOT 91**

## HRR LAKOTA 4119

ProS HB GM

**114 86 28**

35% 5% 90%

BIRTH DATE: **3/6/24** REG. #: **4958650** CAT: **1A 100%**

CED	BW	WW	YW	ADG	DMI	M	ME	HPG	CEM	ST	MARB	YG	CW	REA	FAT
<b>15</b>	<b>-2.2</b>	<b>57</b>	<b>84</b>	<b>0.17</b>	<b>0.48</b>	<b>30</b>	<b>-9</b>	<b>12</b>	<b>9</b>	<b>17</b>	<b>0.37</b>	<b>0.04</b>	<b>10</b>	<b>-0.01</b>	<b>0.01</b>

26% 42% 80% 87% 91% 22% 16% 12% 40% 18% 19% 68% 34% 90% 78% 39%

RED FLYING K BOOMER 70H  
**RED FLYING K BLASTER 48K**  
RED FLYING K DANA 153A

RIDGE NAVIGATOR 0039  
**HRR LAKOTA 249**  
HRR LAKOTA 917

RED FLYING K THUNDER 205F  
RED FLYING K LINETT 41Z  
RED BENCHMARK COMMITTED 871  
RED FLYING K DANA 153A  
RIDGE COMPASS 7087  
RIDGE HOBO 016-9027  
RIDGE PRAGMATIC 6098  
HRR LAKOTA 710

<b>BW</b>	<b>70</b>
<b>ADJ WW</b>	<b>538</b>
<b>WR</b>	<b>98</b>

*HRR Lakota 4119 is a low birthweight female out of RED Flying K Blaster 48K and out of a Ridge Navigator 0039 dam. This is a great maternal pedigree with a top 5% HB ranking.*



**LOT 92**



**HRR ZINA 001, DAM**



**LOT 92**

## HRR ZINA 493

ProS HB GM

**97 66 31**

61% 24% 88%

BIRTH DATE: **3/1/24** REG. #: **4958440** CAT: **1A 100%**

CED	BW	WW	YW	ADG	DMI	M	ME	HPG	CEM	ST	MARB	YG	CW	REA	FAT
<b>20</b>	<b>-5.2</b>	<b>48</b>	<b>80</b>	<b>0.20</b>	<b>0.84</b>	<b>25</b>	<b>2</b>	<b>14</b>	<b>10</b>	<b>16</b>	<b>0.51</b>	<b>0.15</b>	<b>2</b>	<b>-0.14</b>	<b>0.05</b>

1% 5% 96% 92% 80% 63% 55% 38% 17% 5% 33% 31% 86% 98% 93% 96%

JACOBSON MECHANIC 9118  
**JACOBSON MECHANIC 1033**  
JACOBSON QUEEN 8085

MLK CRK EXPRESS 9127  
**HRR ZINA 001**  
HRR ZINA 802

5L CRAFTSMAN 2393-13C  
JACOBSON SADIE 7122  
5L BOURNE 117-48A  
FOREVER QUEEN 948-2657  
5L GRAND EXPRESS 453-5655  
MLK CRK SHEBA 043  
RIDGE PRAGMATIC 6098  
HRR ZINA 672

<b>BW</b>	<b>67</b>
<b>ADJ WW</b>	<b>514</b>
<b>WR</b>	<b>94</b>

*The extended pedigree on this heifer reads like a who's who in the maternal world of Red Angus. She will be a great cow in a moderate package.*





**LOT 93**



**HRR MONA 068, DAM**



## LOT 93 HRR MONA 4114

ProS	HB	GM													
119	92	26													
28%	2%	92%													
			BIRTH DATE: 3/5/24			REG. #: 4958438			CAT: 1A 100%						
CED	BW	WW	YW	ADG	DMI	M	ME	HPG	CEM	ST	MARB	YG	CW	REA	FAT
14	-3.2	52	74	0.14	0.18	25	-6	7	8	21	0.38	0.07	6	-0.15	0.01
30%	25%	91%	95%	98%	5%	57%	15%	99%	26%	1%	64%	50%	95%	93%	38%

RED RMJ REDMAN 1T  
**RIDGE AVALANCHE 2051**  
RIDGE LILA 8132-0017

BIRNIE EXPRESS 353A  
**HRR MONA 068**  
HRR MONA 773

5L NORSEMAN KING 2291  
CROWFOOT KURUBA 4033P  
5L AVALANCHE 525-1014  
RIDGE LILA 101-8132  
MLK CRK EXPRESS 9127  
OTT-MONA-758-970  
RIDGE TRAVELER 5407  
HRR MONA 517

BW	71
ADJ WW	517
WR	95

*HRR Mona 068 is a really nice made heifer with stay and HB in the very top of the breed. The Ridge Avalanche 2051 and Birnie Express 353A aka "Rock Star" bulls close up in the pedigree make her a strong brood cow prospect.*



**LOT 94**



**DAHLKE RED GIRL, MGGD**



## LOT 94 HRR RED GIRL 496

ProS	HB	GM													
113	71	42													
36%	16%	71%													
			BIRTH DATE: 3/1/24			REG. #: 4958554			CAT: 1A 100%						
CED	BW	WW	YW	ADG	DMI	M	ME	HPG	CEM	ST	MARB	YG	CW	REA	FAT
16	-1.1	69	110	0.26	0.96	24	-2	14	9	15	0.39	-0.09	14	0.26	-0.01
11%	63%	37%	37%	39%	75%	71%	25%	14%	21%	43%	58%	3%	82%	25%	4%

RIDGE TOPGUN 9513  
**RIDGE JD 2510**  
RIDGE BLOCKANA 8085-0412

5L FOREMAN 2174-370E  
**HRR RED GIRL 210**  
HRR RED GIRL 0114

5L TOPGUN 560-65B  
RIDGE AQUILA 552-8066  
RIDGE EMPIRE 0028  
RIDGE BLOCKANA 9160-8085  
5L BOURNE 117-48A  
5L ADINA 1551-2174  
RIDGE TRAVELER 5412  
DAHLKE RED GIRL

BW	74
ADJ WW	546
WR	100

*The dam, HRR Red Girl 210 did a nice job on her first go with this heifer, HRR Red Girl 496. She has balanced EPDs.*



**LOT 95**



**HRR BLOCKANA 2178A, MGD**



## LOT 95 HRR BLOCKANA 409

ProS	HB	GM													
124	101	23													
21%	1%	95%													
			BIRTH DATE: 2/9/24			REG. #: 4958542			CAT: 1A 100%						
CED	BW	WW	YW	ADG	DMI	M	ME	HPG	CEM	ST	MARB	YG	CW	REA	FAT
19	-5.7	58	82	0.15	0.31	25	-7	8	12	20	0.46	0.13	3	-0.28	0.02
2%	3%	79%	90%	96%	10%	60%	14%	98%	1%	2%	41%	79%	97%	98%	63%

MLK CRK EXPRESS 9127  
**HRR EXPRESS 5142**  
HRR LAKOTA 115

RED RMJ REDMAN 1T  
**HRR BLOCKANA 2243**  
HRR BLOCKANA 2178A

5L GRAND EXPRESS 453-5655  
MLK CRK SHEBA 043  
SHOCO DATA  
MLK CRK LAKOTA 850  
5L NORSEMAN KING 2291  
CROWFOOT KURUBA 4033P  
TR JULIAN LT142  
FEDDES BLOCKANA 940

BW	66
ADJ WW	513
WR	94

*HRR Blockana 409 is a potential super calving ease female with great top 5% rankings in HB, CED BW, CEM and STAY. Her pedigree is maternally driven on both sides of the family tree.*





**LOT 96**



**HRR EILEEN 005, DAM**



**LOT 96**

## HRR EILEEN 4133

ProS **109** HB **43** GM **66**

42% 70% 20%

BIRTH DATE: **3/14/24** REG. #: **4958448** CAT: **1A 100%**

CED	BW	WW	YW	ADG	DMI	M	ME	HPG	CEM	ST	MARB	YG	CW	REA	FAT
<b>16</b>	<b>-3.1</b>	<b>49</b>	<b>79</b>	<b>0.19</b>	<b>0.42</b>	<b>25</b>	<b>0</b>	<b>13</b>	<b>8</b>	<b>12</b>	<b>0.56</b>	<b>0.15</b>	<b>27</b>	<b>-0.01</b>	<b>0.03</b>

13% 26% 95% 92% 84% 17% 59% 29% 22% 29% 79% 24% 88% 35% 78% 74%

JACOBSON MECHANIC 9118  
**JACOBSON MECHANIC 1033**  
 JACOBSON QUEEN 8085

MLK CRK EXPRESS 9127  
**HRR EILEEN 005**  
 HRR EILEEN 832

5L CRAFTSMAN 2393-13C  
 JACOBSON SADIE 7122  
 5L BOURNE 117-48A  
 FOREVER QUEEN 948-2657  
 5L GRAND EXPRESS 453-5655  
 MLK CRK SHEBA 043  
 5L TOPGUN 560-65B  
 HRR EILEEN 9159

<b>BW</b>	<b>71</b>
<b>ADJ WW</b>	<b>502</b>
<b>WR</b>	<b>92</b>

*HRR Eileen 4133's dam, HRR Eileen 005 calved a bull in our 2023 sale and goes back to the really good HRR Eileen 9159 dam that produced a number of good daughters at HRR.*



**LOT 97**



**HRR MONA 428, MGD**



**LOT 97**

## HRR MONA 4156

ProS **105** HB **84** GM **21**

49% 6% 96%

BIRTH DATE: **3/31/24** REG. #: **4958332** CAT: **1A 100%**

CED	BW	WW	YW	ADG	DMI	M	ME	HPG	CEM	ST	MARB	YG	CW	REA	FAT
<b>10</b>	<b>0.6</b>	<b>65</b>	<b>107</b>	<b>0.27</b>	<b>0.99</b>	<b>25</b>	<b>-5</b>	<b>14</b>	<b>5</b>	<b>18</b>	<b>0.17</b>	<b>-0.02</b>	<b>12</b>	<b>0.21</b>	<b>0.01</b>

88% 89% 54% 43% 34% 78% 55% 16% 16% 87% 10% 96% 14% 86% 33% 41%

RED RMJ REDMAN 1T  
**RIDGE REDMANS LEGEND 1015**  
 RIDGE MONA 2057-4412

RIDGE PROVISION 6013  
**HRR MONA 984**  
 HRR MONA 428

5L NORSEMAN KING 2291  
 CROWFOOT KURUBA 4033P  
 5L LEGEND 1553-425V  
 RIDGE MONA 8162-2057  
 5L ADVANTAGE 3267-221Y  
 RIDGE MONA 8162-2057  
 5L LEGEND 1553-425V  
 LEWIS MONA 108

<b>BW</b>	<b>83</b>
<b>ADJ WW</b>	<b>532</b>
<b>WR</b>	<b>97</b>

*Good actual performance from this younger heifer.*



**LOT 98**



**HRR LAKOTA 623, MGD**



**LOT 98**

## HRR LAKOTA 4121

ProS **121** HB **91** GM **30**

25% 3% 88%

BIRTH DATE: **3/7/24** REG. #: **4958606** CAT: **1A 100%**

CED	BW	WW	YW	ADG	DMI	M	ME	HPG	CEM	ST	MARB	YG	CW	REA	FAT
<b>15</b>	<b>-1.7</b>	<b>53</b>	<b>79</b>	<b>0.16</b>	<b>0.40</b>	<b>26</b>	<b>-3</b>	<b>11</b>	<b>10</b>	<b>19</b>	<b>0.33</b>	<b>-0.03</b>	<b>9</b>	<b>0.19</b>	<b>0.01</b>

23% 52% 90% 92% 93% 16% 46% 22% 54% 6% 6% 76% 13% 92% 36% 41%

RED FLYING K BOOMER 70H  
**RED FLYING K BLASTER 48K**  
 RED FLYING K DANA 153A

RED RMJ REDMAN 1T  
**HRR LAKOTA 259**  
 HRR LAKOTA 632

RED FLYING K THUNDER 205F  
 RED FLYING K LINETT 41Z  
 RED BENCHMARK COMMITTED 871  
 RED FLYING K DANA 153A  
 5L NORSEMAN KING 2291  
 CROWFOOT KURUBA 4033P  
 5L ADVANTAGE 3267-221Y  
 HRR LAKOTA 090

<b>BW</b>	<b>70</b>
<b>ADJ WW</b>	<b>501</b>
<b>WR</b>	<b>92</b>

*HRR Lakota 4121 is a low birth heifer out of Flying K Blaster 48K and a RED RMJ Redman 1J dam. Really good maternal EPDs should make her a solid cow.*





**LOT 99**



**HRR STARLIGHT 633, DAM**



**LOT 99**

## HRR STARLIGHT 443

ProS	HB	GM
77	67	10

BIRTH DATE: **2/23/24** REG. #: **4958210** CAT: **1A 100%**

CED	BW	WW	YW	ADG	DMI	M	ME	HPG	CEM	ST	MARB	YG	CW	REA	FAT
4	-0.1	62	95	0.21	0.57	24	-2	12	1	21	0.16	-0.08	2	0.09	-0.01
99%	81%	64%	71%	76%	31%	64%	25%	49%	99%	2%	97%	4%	97%	58%	6%

RED RMJ REDMAN 1T  
**RIDGE REDMANS LEGEND 1015**  
 RIDGE MONA 2057-4412

MUSHRUSH IMPRESSIVE CA U236  
**HRR STARLIGHT 633**  
 HRR STARLIGHT 958

5L NORSEMAN KING 2291  
 CROWFOOT KURUBA 4033P  
 5L LEGEND 1553-425V  
 RIDGE MONA 8162-2057  
 BUF CRK LANCER R017  
 MUSHRUSH MADAM LT R265  
 SHOCCO DATA  
 VGW PT-STAR 0438

<b>BW</b>	<b>98</b>
<b>ADJ WW</b>	<b>526</b>
<b>WR</b>	<b>96</b>

*HRR Starlight 443 is a dark red nice profiling heifer with some performance.*



**LOT 100**



**HRR INATEXI 568, DAM**



**LOT 100**

## HRR INATEXI 4135

ProS	HB	GM
111	76	35

BIRTH DATE: **3/15/24** REG. #: **4958168** CAT: **1A 100%**

CED	BW	WW	YW	ADG	DMI	M	ME	HPG	CEM	ST	MARB	YG	CW	REA	FAT
14	-2.6	59	91	0.20	0.76	22	3	10	6	21	0.44	0.20	18	-0.03	0.06
39%	35%	74%	77%	79%	54%	82%	44%	88%	75%	2%	45%	96%	71%	80%	98%

5L BODY BUILDER 4434-68D  
**RIDGE DIMENSION 1010**  
 RIDGE CASEY 9071-4050

HRR RAYMOND 975  
**HRR INATEXI 568**  
 HRR HI TEX 046

5L BLOCKADE 2218-30B  
 5L RED BIRD 411-4434  
 5L LEGEND 1553-425V  
 RIDGE CASEY 155-9071  
 SHOCCO DATA  
 SODAK PAULA 6139-96  
 BECKTON EPIC R397 K  
 TFS INATE XXI 351

<b>BW</b>	<b>76</b>
<b>ADJ WW</b>	<b>509</b>
<b>WR</b>	<b>93</b>

*HRR Inatexi 4135 is a low birthweight heifer from a 10-year-old dam, HRR Inatexi 568. She is low sided with good rib shape like her dam.*



**LOT 101**



**HRR ESTONIA 9133, DAM**



**LOT 101**

## HRR ESTONIA 4176

ProS	HB	GM
79	50	29

BIRTH DATE: **4/22/24** REG. #: **4958334** CAT: **1A 100%**

CED	BW	WW	YW	ADG	DMI	M	ME	HPG	CEM	ST	MARB	YG	CW	REA	FAT
13	-1.6	64	96	0.20	0.51	25	-10	15	6	11	0.42	0.08	8	0.01	0.04
44%	54%	56%	69%	79%	25%	57%	10%	10%	80%	86%	49%	58%	93%	73%	81%

5L DEFENDER 560-30Z  
**RIDGE RAD 9075**  
 RIDGE CASEY 978-8034

MLK CRK GRASS ROOTS 7208  
**HRR ESTONIA 9133**  
 HRR ESTONIA 520

5L ADVOCATE 817-14W  
 5L BLACK ADINA 525-560  
 5L GRAND EXPRESS 453-5655  
 OTT-CASEY-F412-978  
 MLK CRK GRASS ROOTS  
 MLK CRK LAKOTA 324  
 XO CROWFOOT 0102X  
 HRR ESTONIA 197

<b>BW</b>	<b>72</b>
<b>ADJ WW</b>	<b>539</b>
<b>WR</b>	<b>99</b>

*HRR Estonia 4176 is a young Ridge RAD 9075 daughter with good performance.*





**LOT 102**



**HRR ABBEY 080, DAM**



**LOT 102**

## HRR ABBEY 4123

ProS	HB	GM
121	71	50

BIRTH DATE: **3/8/24** REG. #: **4958454** CAT: **1A 100%**

25%	17%	50%
-----	-----	-----

CED	BW	WW	YW	ADG	DMI	M	ME	HPG	CEM	ST	MARB	YG	CW	REA	FAT
16	-4.1	53	91	0.24	0.54	21	0	14	9	16	0.63	0.18	5	-0.09	0.07
16%	13%	90%	77%	52%	28%	91%	31%	12%	12%	34%	16%	94%	96%	88%	99%

JACOBSON MECHANIC 9118  
**JACOBSON MECHANIC 1033**  
 JACOBSON QUEEN 8085

MLK CRK STEWARD 7334  
**HRR ABBEY 080**  
 SMJ ABBEY RAMBO CBB Z315

5L CRAFTSMAN 2393-13C  
 JACOBSON SADIE 7122  
 5L BOURNE 117-48A  
 FOREVER QUEEN 948-2657  
 MLK CRK ADVOCATE 4304  
 MLK CRK THUNDER 499  
 CBR BARN BOY 4340-7330  
 SMJ RAMBO DAY U308

<b>BW</b>	<b>64</b>
<b>ADJ WW</b>	<b>474</b>
<b>WR</b>	<b>87</b>

*HRR Abbey 4123 is a low birth weight heifer that goes back to SMJ Abbey Rambo CBB Z315, a Schriefer cow we purchased in the NDRA state sale.*



**LOT 103**



**HRR MISSY 811, MGD**



**LOT 103**

## HRR MISSY 422

ProS	HB	GM
122	81	41

BIRTH DATE: **2/13/24** REG. #: **4958634** CAT: **1A 100%**

24%	7%	72%
-----	----	-----

CED	BW	WW	YW	ADG	DMI	M	ME	HPG	CEM	ST	MARB	YG	CW	REA	FAT
10	-1.9	60	88	0.17	0.47	24	-8	13	5	18	0.63	0.02	4	0.22	0.04
85%	48%	71%	82%	90%	21%	64%	13%	26%	86%	13%	16%	25%	96%	32%	91%

5L DEFENDER 560-30Z  
**RIDGE RAD 9075**  
 RIDGE CASEY 978-8034

MLK CRK STEWARD 7334  
**HRR MISSY 282**  
 HRR MISSY 811

5L ADVOCATE 817-14W  
 5L BLACK ADINA 525-560  
 5L GRAND EXPRESS 453-5655  
 OTT-CASEY-F412-978  
 MLK CRK ADVOCATE 4304  
 MLK CRK THUNDER 499  
 RIDGE PROVISION 6013  
 HRR MISSY 626

<b>BW</b>	<b>70</b>
<b>ADJ WW</b>	<b>527</b>
<b>WR</b>	<b>96</b>

*HRR Missy 422 is a dark red, broody Ridge RAD 9075 X MLK CRK Steward 7334 combination with good performance and maternal EPDs and top 16% Marb.*



**LOT 104**



**HRR FREYJA 547, DAM**



**LOT 104**

## HRR FREYJA 4140

ProS	HB	GM
86	76	10

BIRTH DATE: **3/16/24** REG. #: **4958176** CAT: **1A 100%**

76%	11%	99%
-----	-----	-----

CED	BW	WW	YW	ADG	DMI	M	ME	HPG	CEM	ST	MARB	YG	CW	REA	FAT
9	-0.1	52	77	0.16	0.30	28	-4	13	5	19	0.15	-0.06	1	0.08	0.00
93%	81%	91%	93%	94%	10%	28%	19%	31%	89%	7%	97%	8%	98%	59%	19%

RED RMJ REDMAN 1T  
**RIDGE REDMANS LEGEND 1015**  
 RIDGE MONA 2057-4412

STEADFAST BOAZ T71  
**HRR FREYJA 547**  
 HRR FREYJA 2114

5L NORSEMAN KING 2291  
 CROWFOOT KURUBA 4033P  
 5L LEGEND 1553-425V  
 RIDGE MONA 8162-2057  
 MUSHRUSH ROCKET P016  
 MUSHRUSH LANA LT R040  
 MLK CRK KNIGHT 7153  
 HRR FREYJA 732

<b>BW</b>	<b>84</b>
<b>ADJ WW</b>	<b>503</b>
<b>WR</b>	<b>92</b>

*HRR Lakota 4140 is a out of a 10-year-old dam, HRR Freyja 547, that is still in the herd with a 101 MPPA.*





**LOT 105**



**HRR LAKOTA 018, MGD**



**LOT 105**

## HRR LAKOTA 412

ProS	HB	GM
56	46	10

BIRTH DATE: **2/11/24** REG. #: **4958558** CAT: **1A 100%**

CED	BW	WW	YW	ADG	DMI	M	ME	HPG	CEM	ST	MARB	YG	CW	REA	FAT
12	-3.5	57	82	0.16	0.37	24	-10	12	4	14	0.17	-0.06	4	0.06	-0.01
64%	20%	82%	90%	94%	14%	71%	11%	45%	95%	67%	96%	4%	96%	63%	4%

5L DEFENDER 560-30Z  
**RIDGE RAD 9075**  
 RIDGE CASEY 978-8034

RIDGE JULIAN S005-0099

**HRR LAKOTA 213**  
 HRR LAKOTA 018

- 5L ADVOCATE 817-14W
- 5L BLACK ADINA 525-560
- 5L GRAND EXPRESS 453-5655
- OTT-CASEY-F412-978
- MUSHRUSH LTJULIAN LG S005
- RIDGE SARA F7-8025
- HRR U-2 AUTHENTIC 139A
- HRR LAKOTA 699

<b>BW</b>	<b>60</b>
<b>ADJ WW</b>	<b>455</b>
<b>WR</b>	<b>83</b>

*HRR Lakota 412 is a stylish Ridge RAD 9078 daughter out of a first-calf dam, HRR Lakota 213. She has an exceptional maternal pedigree going back to our donor dam, HRR Lakota 699.*



**LOT 106**



**HRR LAKOTA 108, DAM**



**LOT 106**

## HRR AVALANCHE 4330

ProS	HB	GM
127	70	56

BIRTH DATE: **3/7/24** REG. #: **4958464** CAT: **1A 100%**

CED	BW	WW	YW	ADG	DMI	M	ME	HPG	CEM	ST	MARB	YG	CW	REA	FAT
15	-3.3	56	96	0.25	0.65	24	4	15	8	17	0.59	0.15	13	0.04	0.06
23%	23%	83%	69%	46%	40%	72%	51%	9%	29%	23%	20%	87%	84%	67%	97%

JACOBSON MECHANIC 9118  
**JACOBSON MECHANIC 1033**  
 JACOBSON QUEEN 8085

5L FOREMAN 2174-370E

**HRR LAKOTA 108**  
 MLK CRK LAKOTA 083

- 5L CRAFTSMAN 2393-13C
- JACOBSON SADIE 7122
- 5L BOURNE 117-48A
- FOREVER QUEEN 948-2657
- 5L BOURNE 117-48A
- 5L ADINA 1551-2174
- 5L BLAZIN RED 1354-6166
- MLK CRK LAKOTA 850

<b>BW</b>	<b>81</b>
<b>ADJ WW</b>	<b>511</b>
<b>WR</b>	<b>93</b>

*HRR Lakota 4330 is a younger heifer with a pretty front end and maternal EPDS ranking at the top-end of the breed.*



**LOT 107**



**HRR BLOCKANA 949, MGD**



**LOT 107**

## HRR BLOCKANA 406

ProS	HB	GM
101	72	29

BIRTH DATE: **2/7/24** REG. #: **4958660** CAT: **1A 100%**

CED	BW	WW	YW	ADG	DMI	M	ME	HPG	CEM	ST	MARB	YG	CW	REA	FAT
15	-1.5	70	99	0.18	0.77	28	-3	10	10	16	0.43	0.16	23	-0.09	0.03
23%	56%	30%	64%	89%	55%	29%	21%	81%	7%	38%	47%	90%	56%	88%	72%

MLK CRK EXPRESS 9127  
**HRR EXPRESS 5142**  
 HRR LAKOTA 115

RIDGE NAVIGATOR 0039

**HRR BLOCKANA 285**  
 HRR BLOCKANA 949

- 5L GRAND EXPRESS 453-5655
- MLK CRK SHEBA 043
- SHOCO DATA
- MLK CRK LAKOTA 850
- RIDGE COMPASS 7087
- RIDGE HOBO 016-9027
- RIDGE PROVISION 6013
- HRR BLOCKANA 560

<b>BW</b>	<b>74</b>
<b>ADJ WW</b>	<b>524</b>
<b>WR</b>	<b>96</b>

*HRR Blockana 406 is a gem that could make someone a Junior heifer project. With HRR Express 5142, HRR Lakota 115 and Ridge Navigator 0039 in the pedigree, she will make an excellent cow as well. As green as these girls are, their better days are ahead of them.*





**FRANKIE AND KATIE DILLMAN FAMILY**



LOTS 108-117

## 10 HD DILLMAN RANCH BRED HEIFERS

**The Commercial Red Angus Bred Heifers will be sold gate cut of 5 or more.**

*The Dillman Ranch Commercial Bred Heifers were all born and raised on the Dillman Ranch. All of the heifers were ran on the ranch and were rotated on a rotational grazing system. The whole group was AI'd on June 14th to Ridge Rad 9075 and cleaned up with HRR Boddy Builder 2401. The cleanup bull, HRR Body Builder 2401 has a good maternal pedigree to use on heifers and the be sure to keep the daughters. This bull was only out on the heifers for 49 days. All of the heifers are extremely gentle, and Frankie and Katie have been very strict on culling for bad feet and udders. Here is a real nice set of moderate framed heifers that should work in any program.*

*If there are any questions, contact Katie at (701) 218-0113 or Frankie at (701)290-7297.*

### Vaccination Program:

*Spring 2024: Heifers were given Preg Guard 10, Pinkeye*

*Fall: ProTectUs pour on and Safeguard (All performed by Circle C Vet Services)*

### Ultrasound:

*Ultrasounded by Dr. Chance Noyce, Circle C Veterinary Service. Due April 1 to approximately May 12, 2025. The bulls were pulled on August 2, 2024.*



**DILLMAN HEIFERS**



**AI SIRE:  
RIDGE RAD 9075 (#4132976)**



**NATURAL SERVICE SIRE:  
HRR BODY BUILDER 2401 (#4637193)**





## LOTS 118-130

### 13HD HRR COMMERCIAL OPEN HEIFERS

**The Commercial Red Angus Heifers will be sold gate cut of 5 or more.**

*These commercial heifers are the middle cut from our commercial recipient cow herd. Backed in pedigree by the same sires of our registered herd, they will make a strong addition to an existing herd or a nice foundation to build from. Our commercial cows run with our registered cows so the sires to these heifers will be half-sisters to most of the bulls in the sale. They should be mid 700 weight heifers in good running condition on sale day.*

**Vaccination Program:**

Birth: Inforce 3

Spring 2024 (Branding): Inforce 3 booster, One Shot BVD, 7 way.

August 2024 (Preconditioning): Bovi-Shield Gold, 7 way (Ultrabac 7/Somnus) and Valcor

All heifers are Bangs vaccinated and tagged with an EID tag.

February 2025: Preg Guard Gold 10



**HRR COMMERCIAL HEIFER**



**HRR COMMERCIAL HEIFER**



## LOTS 131-140

### 10HD DILLMAN COMMERCIAL OPEN HEIFERS

**The Commercial Red Angus Heifers will be sold gate cut of 5 or more.**

*This year along with the 10 bred heifers that are in sale, Katie and Frankie decided to sort off 10 replacements and it wasn't an easy decision to pick out a set of 10 even heifers. All these replacements are out of older cows that have been on the place for a while. They were weaned in October and received their vaccinations. After a week in the corrals the replacements are all wintered in a 90-acre field with a deep draw for protection. They currently are getting 3lbs of cracked corn with a pound of cake sprinkled on top along with chopped hay where all net wrap is taken off before it's ground. Every day, Frankie and Katie go out with the feed pickup, and bucket feed the heifers in metal feed bunks. They are super dark red with a good build to them. The Dillman Ranch has been using Heart River Ranch bulls for the past 3 years and lots of these heifer's stem back to their bloodlines.*

**Vaccination Program:**

Spring 2024 (Branding): 7 way/somnus, Vista Once, Pinkeye

October 2024: 7 way/somnus, Vista Once, Pinkeye, Pour On, Safeguard, Bangs Vaccinated, Preg Guard.



**DILLMAN RANCH**



**FRANKIE TAGGING LAST SPRING**



## Home On The Range Program



*Annette has worked with Home On The Range for over 18 years either through serving on the HOTR Board of Directors or guiding and/or advising the cattle synchronization programs for embryo transfer or Aling.*

*Annette's history with Home On The Range actually goes back to the mid 80's when she served as an Assistant County Agent in Golden Valley County. In those days, she enjoyed teaching children about livestock production through the 4-H program.*

*It has been an honor and a pleasure to serve on the board and to be a small part in teaching the children about livestock production through the years. Home On the Range is truly a program that makes a difference in the lives of the children.*







Chuck & Annette Steffan  
4291 Hwy 85 South  
Belfield, ND 58622  
[heartrivergenetics.com](http://heartrivergenetics.com)

A Gathering in the Badlands ..

*Quality Genetics Built on a Heritage of Commitment*

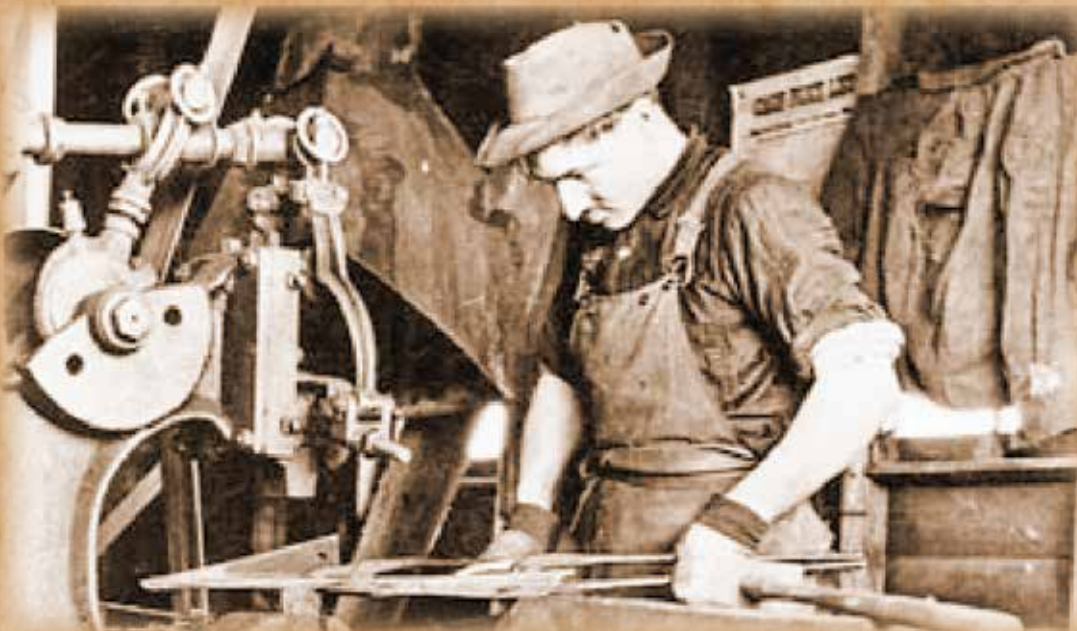
## HEART RIVER RANCH

*Annual Production Sale*

**WEDNESDAY, MARCH 12, 2025**

**The Feedlot • Belfield, ND • 1 p.m. MST**

**DVAuction**  **GGP**  
*Broadcasting Real-Time Auctions*



*Selling:*

**62 Yearling Red  
Angus Bulls**

**34 Yearling Red  
Angus Heifers**

**22 Yearling  
Commercial Red  
Angus Heifers**

**12 3-Year-Old Red  
Angus Registered  
Bred Cows**

**10 Red Angus  
Commercial Bred  
Heifers**