



Annual Bull Sale

03-27-2025, 1 PM

WILDROSE, ND AT THE FIREHALL

GLASOE ANGUS



DEAR FRIENDS,

Thank you for your commitment to the Black Angus breed and your contribution in raising cattle that dominate the market. We are incredibly grateful that you utilize Glasoe Angus in your breeding decisions while you drive the mechanisms of profitability, productivity and performance in the cattle industry. Our promise is to provide you with carefully selected pedigrees and genetic pairings to enhance your herd and ours.

We consider each dam individually – her phenotype, pedigree, performance and personality – while determining which sire will best align to produce desirable and highly profitable progeny. While this set of prospects hail from a diverse range of reference sires, we are witnessing the transformation and optimal results in dimension, expression, athleticism and style. And they continue to do more with less. Born late February through spring, our bulls depend solely on their dam's mothering ability between birth and 205-day weights. Their dams work a full nine months of motherhood before calves are weaned. Post-wean, the bulls slowly build toward a full ration in January of hay, distillers and bull challenger fed for approximately 75 days.

The Glasoe Angus dam makes the bulls, and she stems from more than fifty years of meticulous selection and the exclusive utility of our foundational maternal pedigrees. She exhibits superior fleshing ability and a square-made phenotype. Our demands on her necessitate outstanding mothering ability, production performance and a disposition that allows her to navigate and thrive under multiple conditions. She is built to endure. G A Minabelle 709, our EIGHTEEN-YEAR-OLD Pathfinder® donor, is a testament to our program ideals. Her lead-off sons – Marathon and Mas Miles – are an incredibly special offering that showcase her dominance, durability and longstanding ability to create progeny that benefit the breed.

Our 2025 offering is stacked with powerfully designed prospects who are the result of two clear goals. Bred to perform. Built to last. We have high expectations for this offering and hope they will benefit your herd for years to come.

All the best to you and yours,

Sydney Glasoe Caraballo



SALE DAY PHONE NUMBERS:

SYDNEY GLASOE CARABALLO:
GLASOEANGUSND@GMAIL.COM
678-989-7189

KURT SCHAFF, AMERICAN ANGUS HALL OF FAME
816-520-6447

LYNN WEISHAAR, AUCTIONEER
605-641-7707

KIRBY GOETSCH, FARM & RANCH GUIDE
605-380-3939

KRIS PETERSON, AMERICAN ANGUS ASSOCIATION
701-339-0305

Sale Info

LOCATION:

Cattle will be on display at the ranch sale day at 8533 114th Ave. NW, Wildrose, ND, located three miles northeast of Wildrose. The video sale will be held at 1 p.m. at the Wildrose Fire Hall on Main Street in Wildrose.

ONLINE BIDDING AND ABSENTEE BIDS:

Live internet bidding is available online through DVAuction.com. We can also handle bids if you cannot be with us sale day.
Logan Hoffman 701-388-2618

VOLUME DISCOUNTS, DELIVERY & WINTERING:

Buyers purchasing two bulls or more receive a \$100 discount per bull. Bulls picked up within one week of sale day receive a \$150 discount. We will deliver free for up to 300 miles and will call to arrange delivery. Bulls will be fed free of charge until delivery. Each bull housed and fed past April 20th incurs a \$250 charge.

LUNCH:

Served before the sale and begins at 11:30 a.m.

HEALTH:

All bulls must pass a breeding soundness exam performed by veterinarian Jacob Carlson prior to sale day. All bulls are genetically tested to verify parentage and genomic standings for EPDs, as well as being tested for known genetic conditions recognized by the American Angus Association. Bulls have been vaccinated with Bovi-Shield Gold 5 and Oneshot Ultra 7, poured with Dectomax and have been given their first round of foot rot vaccination. It is the responsibility of the buyer to provide the second round. Health papers will be furnished to cattle going out of state. Our veterinarian, Mariah Jacobs of Northwest Veterinary Services in Powers Lake, ND, will be on-site sale day.

FEEDING:

We utilize a feeding philosophy and management system that fosters fertility, structural integrity and growth while protecting overall gut

health and hoof longevity. Our calves are born primarily in March and April each year. They aren't exposed to calf creep until three weeks prior to weaning. Our bulls are weaned in November and fed a high roughage diet with minimal amounts of starch. Our hay is tested, and we feed a mixed ration of bull challenger pellets, hay and distillers for a targeted gain of 3.5 pounds per day per animal January through February. We calibrate for a 46 to 50 Neg and a 14 protein for optimal bone development and growth. Our bulls are fed this ration for approximately 70 days before tapering to a straight hay ruffage diet. We also provide flax-lick tubs for our mineral program to promote sperm motility.

PAPERS:

Papers will be furnished upon request. We reserve 1/3 revenue-sharing semen interest in all bulls that are sold.

TERMS:

All animals will sell fully guaranteed according to the terms and conditions of the American Angus Association.

PURCHASER'S RISK:

Each animal becomes the risk of the purchaser as soon as sold but shall be the obligation of the seller to see that animals are fed and cared for free of charge to purchaser until loaded for shipment or until the expiration of forty-eight hours after the sale.

ATTENDANCE:

All persons who attend the sale do so at their own risk. We assume no liability, legal or otherwise for any accidents.

Insurance:

Haugland Insurance Agency of Crosby, ND, provides insurance policies on cattle. For more information, please contact Amber Haugland at 701-641-8792.



SIRE DIRECTORY:

S A V MAGNIFY 1107	20159548	LOTS 1-4
S A V MAGNUM 1335	20159546	LOT 5-6
TEHAMA TAHOE B767	17817177	LOTS 7-14
G A REGARD 633	18600332	LOTS 15-21
S A V RESOURCE 1441	17016597	LOT 22
G A ERA 207	20593098	LOTS 23-28
G A CERTAINTY 155	20205218	LOTS 29-34
HOFFMAN THEDFORD	19820180	LOT 35
S A V PRESIDENT 6847	18578964	LOT 36
HOOVER NO DOUBT	17882682	LOT 37
V A R POWER PLAY 7018	18717078	LOT 38
B-52 222	20546084	LOTS 39-43
SITZ RESILIENT 20108	19057457	LOTS 44
DEER VALLEY GROWTH FUND	18827828	LOT 45
G A STORM 016	19889229	LOTS 46-49
G A STORMER 218	20547101	LOTS 51-53



G A COLOSSAL ANNE 4100

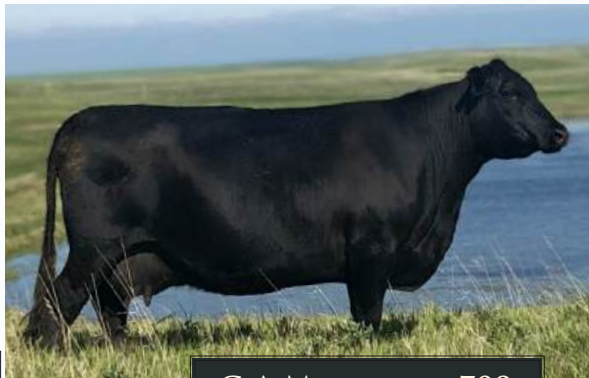
11 YEARS OLD





G A COLOSSAL ANNE 013

15 YEARS OLD



G A MINABELLE 709

18 YEARS OLD



G A MINNABELLE 334

12 YEARS OLD



G A ANNE 266

13 YEARS OLD



G A ANNE 113

14 YEARS OLD



G A DONOR LINE-UP

ESTABLISHED PATHFINDER EMBRYO DONORS

G A SIRES:

WHY WE UTILIZE GLASOE ANGUS SIRES

Our sires are utilized in embryo transfer, artificial insemination and natural service breeding. Our bulls born and raised here provide a testing ground for how our pedigrees and genetics compare to other sires in the breed. Our Glasoe Angus sires have produced Pathfinder® daughters, top-selling sons and real-world production performance that enhance our herd.

S A V MAGNIFY 1107

REG. 20159548

SIRE TO LOTS 1-4

“Magnify uniquely solves all antagonisms with his rare combination of phenotypic power and numeric excellence,” states Kelly Schaff in his 2024 S A V production sale catalog.

We chose Magnify to protect and enhance our herd’s performance and phenotype while adding power that manifests from paper data into the pasture. Magnify was the heaviest 205-day weight bull of the S A V 2021 calf crop at 1,103 pounds and a weaning ratio of 119. He showcases muscle, mass and superior length on a foundation of excellent feet. Magnify’s dam earned donor status after raising Magnify; she carries the legendary lineage of S A V Blackcap May 1436 in her paternal and maternal heritage.

His Glasoe daughters are deep-ribbed, wide-based and thick to thrive here while raising well-designed progeny. His sons are powerfully made with high-end weaning performance.



Nichols Extra K205
K C F Bennett Southside
 K C F Miss 208 S11
Mead Magnitude #*18543414
 Plattemere Weigh Up K360
Mead Primrose N198
 Mead Primrose K247

Coleman Charlo 0256
S A V President 6847
 S A V Blackcap May 4136
S A V Blackcap May 9500 +*19503757
 Rito 707 of Ideal 3407 7075
S A V Blackcap May 4517
 S A V Blackcap May 4136

PRODUCTION/MATERNAL/MANAGEMENT

CED	BW	WW	YW	YH	SC
+6	+1.9	+100	+174	+9	+89
HP	CEM	MILK	MW	MH	\$EN
+11.0	+9	+35	+130	+8	-55
DOC	CLAW	ANGLE	PAP	HS	
+34	+33	+39	+92	+46	

CARCASS/\$VALUES

CW	MARB	RE	FAT	\$F	\$B	\$W	\$C
+74	+36	+99	-.016	+108	+153	+94	+267

THE DAM OF LOTS 1 & 2

Our esteemed matriarch G A MINABELLE 709 has earned more than a quarter million in progeny sales. This magnificent EIGHTEEN-YEAR-OLD matriarch is a prolific Pathfinder. She raised a superior calf every year for more than a decade and earned an exceptional average Wean Ratio of 110 on twelve consecutive progeny before entering full-time donor service.



G A MINABELLE 709

photo taken at twelve years old in 2019

Minabelle 709 raised our popular and powerful heifer-qualified 2012 G A Montana 216. He was stout, sturdy and a sweetheart of a bull. We sold him as a coming four-year-old to another registered breeder. Montana produced multiple Pathfinder® daughters, and his male progeny were sought after in our bull sales.

Minabelle 709 entered our donor pen at fourteen years old. Her twelve-year-old daughter, G A Minnabelle 334, is also a Pathfinder® donor in our herd. Another daughter, G A Minnabelle 117, topped the 2022 ND Select Sale in her bred heifer class and was sold to Lindskov's LT Ranch in Isabel, SD. Two of Minabelle 709's embryo flush Magnify daughters (sisters to LOTS 1 & 2) were featured highlights of our 2024 Female Sale. They are flush sisters to LOTS 1 & 2.

SAF Fame
SAF Focus of ER
K C F Miss 208 S11

Mytty In Focus #13880818

Siz Alliance 6595

Mytty Countess 906

Baldrige Countess 357

Connealy Dateline
Vermilion Dateline 7078

SAV Blackcap May 4136

Glasoes Minabelle 550 15288247

Bon View Bando 1245

Glasoes Minabelle 168

Glasoes Minabelle 947

1 G A MARATHON 406

REG. +*21074385

BD 02/22/2024

BW	205 adj WT	WR	Dam's Progeny Avg.	WDA
89	842	116	12-110	4.17



K C F Bennett Southside
Mead Magnitude

Mead Primrose N198

S A V Magnify 1107 *20159548

S A V President 6847

S A V Blackcap May 9500

S A V Blackcap May 4517

SAF Focus of ER

Mytty In Focus

Mytty Countess 906

G A Minabelle 709 #15992085

Vermilion Dateline 7078

Glasoos Minabelle 550

Glasoos Minabelle 168

CED	BW	WW	YW	SC	DOC	HP	MILK	RE	SC
+10	+1.1	+86	+148	+91	+28	+13.9	+32	+56	+262

MARATHON & MAS MILES lead off an exceptional set of yearling sires. These embryo flush brothers hail from our esteemed matriarch G A Minabelle 709, a Pathfinder® donor who is EIGHTEEN YEARS OLD, and S A V Magnify 1107. These peas on a pretty pod exude front pasture presence with length, width, and dimension. Marathon and Mas Mile's performance, pedigree and genomics back up that visual appeal. We retain a 1/3 semen interest on both flush brothers and request the opportunity to collect semen on both before delivery. We will utilize them on our heifers. Marathon and Mas Miles arrived within mere pounds of each other at birth; every weigh-in since they have been neck and neck for nearly identical herd-leading performance and gentle personalities to match.

LOT 1 GENOMIC PERCENT RANK (1-100 score. 1 is the top rank of the breed.)

5 CEM. 9 FS Angle. 10 FS Claw. 10 CED. 12 YW. 13 Doc. 14 MW. 21 BW. 21 Milk. 22 WW. 31 CW. MARATHON offers great phenotype and hoof structure for a solid and long-lasting foundation.



G A MINNABELLE 403



G A MINNABELLE 404

2 G A MAS MILES 407

REG. +*21074386

BD 02/23/2024

BW	205 adj WT	WR	Dam's Progeny Avg.	WDA
83	849	116	12-110	4.05



K C F Bennett Southside
Mead Magnitude

Mead Primrose N198

S A V Magnify 1107 *20159548

S A V President 6847

S A V Blackcap May 9500

S A V Blackcap May 4517



SAF Focus of E R

Mytty In Focus

Mytty Countess 906

G A Minabelle 709 #15992085

Vermilion Dateline 7078

Glasoes Minabelle 550

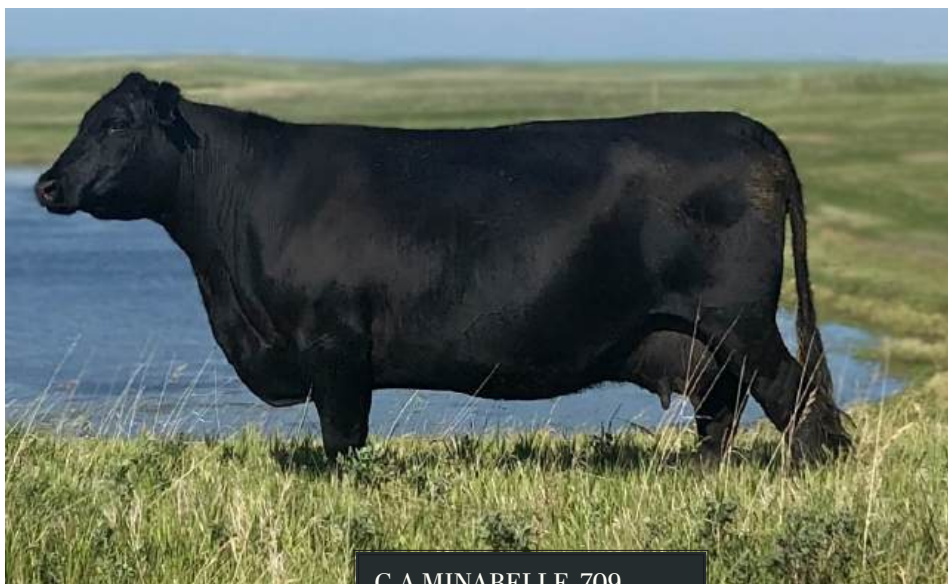
Glasoes Minabelle 168

CED	BW	WW	YW	SC	DOC	HP	MILK	RE	SC
+8	+1	+77	+136	+1.22	+28	+13.9	+29	+70	+277

LOT 2 GENOMIC PERCENT RANK

5 MW, 9 BW, 12 Doc, 13 CED, 13 YW, 16 CEM, 18 WW, 18 CW, 20 Milk, 22 HP, 26 SC.

MAS MILES offers the rare combination of superior carcass merit and maternal power with projected excellent milk projection, heifer pregnancy and fertility EPDs.



G A MINABELLE 709

photo taken at twelve years old in 2019

DAM TO LOTS 1 & 2

lots 1 and 2 are backed by six Pathfinder pedigrees out of eight in their lineage. G A MINABELLE 709 G A MINNABELLE 403 AND G A MINNABELLE 404 (pictured left) are flush sisters to and were featured highlights of our 2024 Female Sale.

The Magnify daughters are feminine-made, sound, full-bodied and exhibit a desirable length of spine. They also showcase gentle dispositions.



G A Colossal Anne 4100

Eleven-year-old Pathfinder® and embryo donor.

K C F Bennett Southside
Mead Magnitude
 Mead Primrose N198
SA V Magnify 1107 *20159548
 SA V President 6847
SA V Blackcap May 9500
 SA V Blackcap May 4517

SA V President 6847
SA V America 8018
 SA V Madame Pride 0075
G A Colossal Anne 106 +*20296691
 Brooks Connection 0327
G A Colossal Anne 4100
 G A Colossal Anne 013

CED	BW	WW	YW	SC	DOC	HP	MILK	RE	SC
+2	+4.8	+102	+173	+89	+32	+6.4	+33	+75	+265

Maxim earned our top 205-day weight of his entire class. He is a full brother to our 2024 Lot 1 bull, G A Maximus 317. Maximus earned a record-breaking 970 pounds for his adjusted 205-day weight without creep feed or supplement and was sold to Colter Zentner of Zentner Cattle Company in Bridger, MT. Maxim's dam, who earned a whopping wean ratio of 124 on her first two calves, had been selected to enter our embryo donor program but died in a freak accident in June. Maxim's genetics and pedigree are a testament to his performance despite becoming an orphan. He did not just survive; he has thrived.

GENOMIC PERCENT RANK (1-100 score. 1 is the top rank of the breed.)
 1 WW. 1 YW. 2 CW. 4 MW. 5 PAP. 6 Doc. 9 Tend. 18 Milk. 27 SC.

TARGETING THE BRAND -CABCATTLE.COM

It takes more than a black hide to earn the *Certified Angus Beef*® (CAB®) brand logo and the premiums that come along with it. From best management practices to minimum genetic requirements, we've got you covered on what needs to happen at the ranch to leverage the brand and add to your bottom line.

The beef community is data driven, with buyers tracking performance and grade by source. If your calves are consistently topping the auction market these days, you're already on the right track. That's also an indication you can feel confident in partnering or retaining ownership all the way and sell to a licensed packer.

We offer several tools to help Angus producers capitalize on opportunities to capture grid premiums packers pay to producers each year for meeting the CAB brand standards. In 2023, CAB carcasses returned nearly \$100 per head above market average.



4 G A MARCH ON 440

REG. *21074441

BD 03/12/2024

BW	205 adj WT	WR	Dam's Progeny Avg.	WDA
79	740	99	4-98	3.75



K C F Bennett Southside
Mead Magnitude

Mead Primrose N198

SA V Magnify 1107 *20159548

SA V President 6847

SA V Blackcap May 9500

SA V Blackcap May 4517



Rito 707 of Ideal 3407 7075

SA V Resource 1441

SA V Blackcap May 4136

GA Colossal Anne 819 +*19313971

Connealy Impression

GA Anne 113

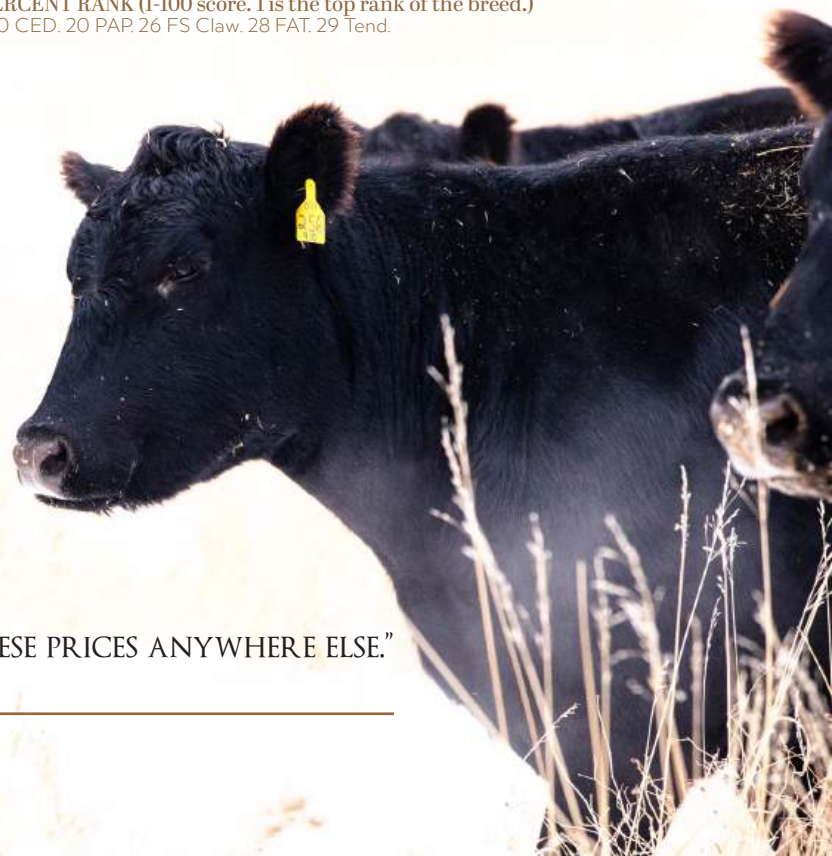
GA Colossal Anne 7120

CED	BW	WW	YW	SC	DOC	HP	MILK	RE	SC
+8	+11	+82	+142	-17	+35	+7.6	+24	+7.4	+253

Another heifer-qualified prospect, March On hails from a full sister to G A Regard 633, whose sons are LOTS 15-21. She is due with her fifth consecutive calf; March On's granddam is in full-time embryo donor service at Heart River Genetics and is co-owned by Wendel Livestock, Eastfork Angus Ranch and Glasoe Angus. He earns an exceptional Docility EPD of +35, which places him in the top 1 percent of the Black Angus breed.

GENOMIC PERCENT RANK (1-100 score. 1 is the top rank of the breed.)

1 Doc. 7 BW, 10 CED, 20 PAP, 26 FS Claw, 28 FAT, 29 Tend.



"YOU WON'T FIND A BETTER-QUALITY BULL AT THESE PRICES ANYWHERE ELSE."

- Wayne Vatne of Wildrose, ND

S A V MAGNUM 1335
REG. 20159546

SIRE TO LOTS 5 & 6

Magnum, a paternal brother to Magnify, was the \$345,000 lead-off bull of the 2022 S A V Sale to ST Genetics and Mohnen Angus. His embryo donor dam is a third-generation donor, and he carries the maternally powered pedigree of Net Worth and Renown.

Docility

GLASOE ANGUS BEGAN SELECTING DOCILE PEDIGREES NEARLY TWO DECADES AGO. OUR COWS HAVE GENERATIONS OF BUILT-IN HUMAN TOLERANCE, WORKING EASE AND GENTLE TEMPERAMENTS BACKING THEM.



Nichols Extra K205
K C F Bennett Southside
 K C F Miss 208 S11
Mead Magnitude #*18543414
 Plattermere Weigh Up K360
Mead Primrose N198
 Mead Primrose K247

LD Capitalist 316
 Connealy Capitalist 028
 LD Dixie Erica 2053
S A V Emblynette 9023 *19442849
 S A V Renown 3439
S A V Emblynette 7505
 S A V Emblynette 8172

PRODUCTION/MATERNAL/MANAGEMENT							
CED	BW	WW	YW	YH	SC		
+10	+4	+90	+167	+8	+1.78		
HP	CEM	MILK	MW	MH	\$EN		
+11.2	+17	+32	+117	+1.0	-47		
DOC	CLAW	ANGLE	PAP	HS			
+24	+46	+36	+2.89	+58			
CARCASS/\$VALUES							
CW	MARB	RE	FAT	\$F	\$B	\$W	\$C
+72	+58	+89	+0.07	+117	+170	+83	+284

5 G A MACHO 458

REG. 21074786

BD 03/17/2024

BW	205 adj WT	WR	Dam's Progeny Avg.	WDA
83	754	101	3-101	3.76



CED	+2
BW	+3.2
WW	+95
YW	+170
SC	+1.68
DOC	+34
HP	+9.3
MILK	+29
RE	+76
SC	+297

Macho put up some manly numbers to back up his phenotype and performance. He will add frame and pounds made for today's beef market demands in both volume and quality. His SValue EPDs rank in the top 20% for SC (combined value), top 15% for SW (weaned calf value), top 10% for SB (beef value) and top 2% for SF (feedlot value). He earns the CAB stamp; identify his calves and showcase Macho's genomics to order buyers to earn a premium by the pound.

GENOMIC PERCENT RANK (1-100 score, 1 is the top rank of the breed.)

1 Doc. 1 MW. 1 MH. 2 YW. 3 WW. 3 CW. 5 YH. 7S C. 17 Tend. 23 RE. 25 FAT. 26 Milk. 29 CEM.

K C F Bennett Southside
Mead Magnitude
 Mead Primrose N198
 S A V Magnum 1335 *20159546
 LD Capitalist 316
 S A V Emblynette 9023
 S A V Emblynette 7505

Sinclair Emulation XXP
 S A V Elation 7899
 S A V Blackcap May 1782

G A Coquette 049 19896884
 G A Montana 216
 G A Coquette 564
 G A Coquette 307



6 G A MACHISMO 463

REG. 21074393

BD 03/19/2024

BW	205 adj WT	WR	Dam's Progeny Avg.	WDA
87	728	98	3-108	3.65



CED	1+8
BW	1+2.3
WW	1+74
YW	1+142
SC	1+1.46
DOC	1+27
HP	1+11.9
MILK	1+29
RE	1+79
SC	+261

Machismo exudes masculine pride and sheer eye appeal. His dam is a brickhouse bovine who earns a 108 wean ratio on her first three calves and an impressive 353-day calving interval. A daughter to our productive 10-year-old Pathfinder® and Montana daughter, G A Ebony 556, our Ebony 032 does not miss, and is due with her fourth consecutive AI calf.

GENOMIC PERCENT RANK (1-100 score, 1 is the top rank of the breed.)

3 MILK. 4 SC. 6 Tend. 10 FS Claw. 13 Doc. 22 CED. 23 BW. 23 YH. 23 HP. 23 CW. 27 WW.

K C F Bennett Southside
Mead Magnitude
 Mead Primrose N198
 S A V Magnum 1335 *20159546
 LD Capitalist 316
 S A V Emblynette 9023
 S A V Emblynette 7505

Rito 707 of Ideal 3407 7075
 S A V Resource 1441
 S A V Blackcap May 4136

G A Ebony 032 19884620
 G A Montana 216
 G A Ebony 556
 G A Ebony 333



TEHAMA TAHOE B767

REG. 17817177

SIRE TO LOTS 7-14

Tahoe is a complete and proven sire with balanced-trait EPDs backed by more than 10,000 registered progeny. He offers the highly sought after combination of calving ease and production performance with attention to phenotype. His progeny demonstrate width of base packed onto a moderate frame with quiet dispositions, as well as the added benefit of superior carcass merit. Tahoe also offers maternal strength, sound udders and superior mothering traits.



Connealy Onward
Sitz Upward 307R
 Sitz Henrietta Pride 81M
Tehama Upward Y238 *16760354
 Tehama Gridmaker L234
Tehama Elite Blackbird T73
 Tehama Elite Blackbird K592

Sitz Traveler 8180
SAV Final Answer 0035
 SAV Emulous 8145
Tehama Mary Blackbird Y684 +*16876258
 GAR Retail Product
Tehama Mary Blackbird T073
 Tehama Mary Blackbird R704

PRODUCTION/MATERNAL/MANAGEMENT							
CED	BW	WW	YW	YH	SC		
+9	+3	+80	+134	+2	+1.22		
HP	CEM	MILK	MW	MH	SEN		
+14.3	+7	+25	+60	+1	-15		
DOC	CLAW	ANGLE	PAP	HS			
+24	+52	+48	+2.20	+01			
CARCASS/\$VALUES							
CW	MARB	RE	FAT	\$F	\$B	\$W	SC
+55	+90	+70	+021	+95	+160	+93	+291

7 G A TALLY 425

REG. *21075913

BD 03/04/2024

BW	205 adj WT	WR	Dam's Progeny Avg.	WDA
79	826	111	2-106	3.96



Sitz Upward 307R
Tehama Upward Y238
 Tehama Elite Blackbird T735
Tehama Tahoe B767 #+*17817177
 SAV Final Answer 0035
Tehama Mary Blackbird Y684
 Tehama Mary Blackbird T073

X

Baldrige Colonel C251
GA Colonel 929
 GA Pride 618
GA Anita 191 20207701
 GA Triumph 622
GA Anita 968
 GA Anita 511

CED	BW	WW	YW	SC	DOC	HP	MILK	RE	SC
+3	+2.4	+98	+164	+1.28	+19	+13.6	+30	+69	+280

Tally is a flat-out stylish Tahoe son that keeps an impressive tally in multiple traits with front-pasture herd sire attraction. He earned the highest adjusted 205-day weight of the Tahoe progeny at 826 pounds. He will add frame, dimension, and general appeal while garnering top SValue EPDs: top 1% for SW, top 15% for SM, top 20% for SF, and top 35% for SC. We request to collect semen on Tally before delivery to utilize his genetics in our herd.

GENOMIC PERCENT RANK (1-100 score. 1 is the top rank of the breed.)
 1 WW. 2 YW. 2 YH. 2 HS. 2 CW. 5 MW. 5 MH. 11 Milk. 22 SC. 24 RE. 29 HP. 29 FAT.

8 G A TAHOE 402

REG. *21075832

BD 02/20/2024



Sitz Upward 307R
Tehama Upward Y238
 Tehama Elite Blackbird T735
Tehama Tahoe B767 #+*17817177
 SAV Final Answer 0035
Tehama Mary Blackbird Y684
 Tehama Mary Blackbird T073

X

SAV 654X Rainmaster 6849
GA Rainmaster 031
 GA Colossal Anne 627
GA Colossal Anne 292 20505236
 GA Score 304
GA Colossal Anne 518
 GA Colossal Anne 869

BW	205 adj WT	WR	Dam's Progeny Avg.	WDA
75	765	103	1-103	3.44

EPDS				
CED	BW	WW	YW	SC
+1.1	-2	+71	+121	+1.40
DOC	HP	Milk	RE	SC
+19	+20.2	+28	+24	+285

Lot 8 strides forward on superior feet, breeds heifer-qualified, stamped CAB, and scores in the top 3 percent of the breed for his SM/Maternal Weaned Calf Value.

GENOMIC PERCENT RANK (1-100 score. 1 is the top rank of the breed.)
 2 HP. 6 FS Angle. 11 FS Claw. 13. Marb. 14 CED. 22 HS. 22 Milk. 27 BW. 28 SC. 29 WW.

9

G A TAHOE 422

REG. 21075923

BD 03/03/2024

BW	205 adj WT	WR	Dam's Progeny Avg.	WDA
73	733	99	4-100	3.67



Sitz Upward 307R
Tehama Upward Y238
 Tehama Elite Blackbird T735
Tehama Tahoe B767 #+*17817177
 SAV Final Answer 0035
Tehama Mary Blackbird Y684
 Tehama Mary Blackbird T073
 V A R Generation 2100
GA Genesis 721
 GA Colossal Anne 224
GA Colossal Anne 930 19626703
 SAV Resource 1441
GA Colossal Anne 624
 GA Anne 180

CED	BW	WW	YW	SC	DOC	HP	MILK	RE	SC
+9	+9	+79	+135	+1.32	+28	+14.5	+25	+69	+275

Lot 9 is another heifer-qualified prospect with sound hooves, sought-after docility, maternally-powered pedigree and the necessary performance to sell calves that provide payweight and daughters worth retaining. He scores in the top 10 percent of the breed for his SM/Maternal Weaned Calf Value.

GENOMIC PERCENT RANK (1-100 score. 1 is the top rank of the breed.)
 14HP 16 SC. 17 WW. 21 Doc. 26 CEM. .28 FS Angle. 31 FS Claw.

10 G A TAHOE 434

REG. 21075936 BD 03/09/2024

Sitz Upward 307R
Tehama Upward Y238
 Tehama Elite Blackbird T735
Tehama Tahoe B767 #+*17817177
 SAV Final Answer 0035
Tehama Mary Blackbird Y684
 Tehama Mary Blackbird T073
 Connealy Consensus 7229
R/M Turning Point 1C94
 R/M Rita 9691
GA Minnabelle 512 #18314450
 Brooks Connection 0327
GA Minnabelle 334
 GA Minabelle 709

BW	205 adj WT	WR	Dam's Progeny Avg.	WDA
83	751	101	8-102	3.79
EPDS				
CED	BW	WW	YW	SC
+9	-.1	+72	+115	+1.28
DOC	HP	Milk	RE	SC
+17	+20.7	+27	+61	+259

This sale will be broadcast live on the internet.

DVAuction
 Broadcasting Real-Time Auctions
 Real time bidding & proxy bidding available.

WITH QUESTIONS CALL
 Logan Hoffman 701-388-2618

11

G A TAHOE 439

REG. 21074395

BD 0 3/11/2024

BW	205 adj WT	WR	Dam's Progeny Avg.	WDA
83	771	104	3-97	3.83



Sitz Upward 307R
Tehama Upward Y238
 Tehama Elite Blackbird T735
Tehama Tahoe B767 #**17817177
 SAV Final Answer 0035
Tehama Mary Blackbird Y684
 Tehama Mary Blackbird T073

VAR Generation 2100
G A Genesis 721
 G A Colossal Anne 224
G A Colossal Anne 053 19884629
 SAV Resource 1441
G A Colossal Anne 834
 G A Anne 113

CED	BW	WW	YW	SC	DOC	HP	MILK	RE	SC
+4	+2.5	+80	+135	+48	+29	+15.9	+26	+97	+255

GENOMIC PERCENT RANK (1-100 score, 1 is the top rank of the breed.)
 5 Doc, 8 WW (wean weight), 12 RE (ribeye), 15 HP (heifer pregnancy), 17 HS (hair shed), 20 CW (carcass weight), 21 YW (yearling weight).



BRED TO PERFORM. BUILT TO LAST.

12 G A TAHOE 430

REG. 21074401 BD 03/07/2024

BW	205 adj WT	WR	Dam's Progeny Avg.	WDA
72	744	100	2-100	3.56



Sitz Upward 307R
Tehama Upward Y238
 Tehama Elite Blackbird T735
Tehama Tahoe B767 #+*17817177
 SAV Final Answer 0035
Tehama Mary Blackbird Y684
 Tehama Mary Blackbird T073

X

Coleman Charlo 0256
SAV Rainfall 6846
 SAV Blackcap May 4136
GA Colossal Anne 105 20205251
 SAV Resource 1441
GA Colossal Anne 933
 GA Colossal Anne 612

CED	BW	WW	YW	SC	DOC	HP	MILK	RE	SC
+8	-3	+78	+139	+89	+26	+11.8	+31	+78	+253

Deep bodied and smooth topped, Lot 12 combines calving ease and carcass merit in a docile and moderate package.

13 G A TAHOE 414

REG. * 21075772 BD 02/27/2024



Sitz Upward 307R
Tehama Upward Y238
 Tehama Elite Blackbird T735
Tehama Tahoe B767 #+*17817177
 SAV Final Answer 0035
Tehama Mary Blackbird Y684
 Tehama Mary Blackbird T073

Plattemere Weigh Up K360
Connealy Shamrock
 Elbanna of Conanga 1209
GA Colossal Anne 236 20546852
 VAR Heritage 5038
GA Colossal Anne
 GA Colossal Anne 644

BW	205 adj WT	WR	Dam's Progeny Avg.	WDA
78	748	101	1-101	3.39
EPDS				
CED	BW	WW	YW	SC
+5	+2.1	+87	+146	+1.83
DOC	HP	Milk	RE	SC
+25	+17.7	+30	+1.03	+320

GENOMIC PERCENT RANK (1-100 score, 1 is the top rank of the breed.)
 2 HS. 3 SC. 5 HP. 7 RE. 10 WW. 13 CW. 20 YW. 23 Milk. 27 Marb. 28 FAT.
 31 Doc. 31 FS Claw. 38 FS Angle.

14 G A TAHOE 441

REG. * 21074413 BD 03/12/2024



Sitz Upward 307R
Tehama Upward Y238
 Tehama Elite Blackbird T735
Tehama Tahoe B767 #+*17817177
 SAV Final Answer 0035
Tehama Mary Blackbird Y684
 Tehama Mary Blackbird T073

SAV Raintance 6848
GA Raintance 922
 GA Eriskay 276
GA Eline 165 *20205219
 GA Complete 152
GA Eline 548
 GA Eline 263

BW	205 adj WT	WR	Dam's Progeny Avg.	WDA
78	701	94	2-96	3.36
EPDS				
CED	BW	WW	YW	SC
+9	-1	+66	+115	+96
DOC	HP	Milk	RE	SC
+21	+13.4	+23	+60	+230

COW

the foundation of bull power

The Black Angus dam continues to raise cattle that dominate for their sheer profitability by the pound and carcass merit. Their commercial calves finish with superior efficiency and provide quality on the grid that both buyers and consumers trust and demand.

My family chose Black Angus cattle for those reasons years ago, but it's the Glasoe Angus dam's superior mothering ability, steadfast fertility and legacy of maternal strength that ensures our herd's continued success with each generation of cattle.

We continually strive for exceptional breeding, mothering ability and production performance. The established and future success of our herd's notable maternal longevity demands constant fertility, structural durability and long-term nurturing from the first calf to then tenth and more that dam raises. Every female was born and bred at our ranch and is backed by decades of careful observation, record keeping, data and ever-increasing demands on her. Our embryo donors exhibit a long and distinguished career of production

G A Pathfinder® Donors

2007 G A Colossal Anne 7120 – died at sixteen years old

2007 G A Minabelle 709 – eighteen years old

2010 G A Colossal Anne 013 – fifteen years old

2011 G A Colossal Anne 113 – fourteen years old

daughter of G A Colossal Anne 7120

2013 G A Minnabelle 334 – twelve years old

daughter of G A Minabelle 709



DURABILITY. DOCILITY. DOMINANCE.

G A REGARD 633

REG. 18600332

SIRE TO LOTS 15-21

Regard, a Resource son, naturally serviced dams this summer at eight years old. We bought him back from Erickson Ranch in 2021. He is one of the most docile, durable and dominant bulls raised on the ranch. He represents older yet proven genetics; multiple Regard sons have earned superior 205-day weights against AI-sired and ET contemporaries. His wean ratio on his first set of nineteen calves from 2022 was 102.

Regard's Pathfinder® dam and granddam were both placed in full-time flush service after showcasing tremendous fertility, longevity and consistent performance production. His granddam, G A Colossal Anne 7120, died on Christmas Eve just shy of sixteen years old and was still producing frozen embryos that summer. She earned a 372-day average calving interval and a wean ratio of 109 on eleven consecutive calves. Regard's dam, G A Anne 113, is referenced to the right. Her genomic percent rank places her at 25 or higher in wean weight, scrotal circumference, docility, heifer pregnancy, calving ease maternal, mature weight, carcass weight, marbling and tenderness.



R R Rito 707
Rito 707 of Ideal 3407 7075
 Ideal 3407 of 1418 076
SAV Resource 1441 #*17016597
 SAV 8180 Traveler 004
SAV Blackcap May 4136
 SAV May 2397

 Connealy Reflection
Connealy Impression
 Pearl Pammy of Conanga 194
GA Anne 113 #*17101180
 Woodhill Foresight
GA Colossal Anne 7120
 Glasoes Colossal Anne 505

PRODUCTION/MATERNAL/MANAGEMENT

CED	BW	WW	YW	YH	SC
-1	+4.1	+65	+115	+3	+90
HP	CEM	MILK	MW	MH	SEN
+12.9	+4	+21	+81	+5	-23
DOC	CLAW	ANGLE	PAP	HS	
+26	+46	+40	-3.63	+64	

CARCASS/\$VALUES

CW	MARB	RE	FAT	\$F	\$B	\$W	\$C
+58	-.01	+1.09	-.044	+115	+145	+46	+244



SIRE S A V RESOURCE 1441



DAM G A ANNE 113 #*17101180

The distinguished dam of G A REGARD 633, Anne is co-owned by Wendel Livestock, Eastfork Angus Ranch and Glasoe Angus. Her maternal excellence from hoof to udder carries on with the lineage of our Regard progeny. She packs performance and style into her progeny and is a productive donor at FOURTEEN YEARS OLD. Her progeny exhibit wide tops, square-made structure, easy fleshing ability and gentle natures. She also earns the coveted Targeting the Brand Certified Angus Beef stamp for carcass merit.

“THE PATHFINDER ANGUS PROGRAM

was started in 1978 in an effort to identify superior cows in the breed based on their records of performance from Angus Herd Improvement Records (AHIR). In identifying these superior cows, emphasis was placed on early puberty, breeding and early calving, followed by regularity of calving and above-average performance of the offspring.”

~ American Angus Association.

CRITERIA FOR PATHFINDER COWS:

Pathfinder + Embryo Transplant * Parents Qualified

- ~The maximum age accepted for first calving is the within-herd average for first calving plus 30 days
- ~Females included in the within-herd average calculation must have their first calf by 2 years and 181 days of age.
- ~A minimum of 5 herdmates or calves of the same sex for evaluation
- ~The dam must maintain a regular calving interval
- ~First 3 calves must post a minimum average progeny weaning weight ratio of 105
- ~Or the average WR is 105 as she produces additional progeny beyond 3 calves
- ~Calves are sired by registered Angus bulls



Performance

15 G A REGARD 418

REG +*21074389

BD 03/01/2024

BW	205 adj WT	WR	Dam's Progeny Avg.	WDA
95	687	95	9-115	3.45



Rito 707 of Ideal 3407 7075
 SAV Resource 1441
 SAV Blackcap May 4136
 G A Regard 633 *18600332
 Connealy Impression
 G A Anne 113
 G A Colossal Anne 7120
 SAV Heritage 6295
 Glasoes Gumbo 840
 Glasoes Ebony 430
 G A Colossal Anne 013 #16777033
 Glasoes Oscar 911
 Glasoes Colossal Anne 287
 Glasoes Colossal Anne 505

CED	BW	WW	YW	SC	DOC	HP	MILK	RE	SC
-4	+4.9	+69	+120	+109	+10	+77	+20	+76	+190

LOT 15 & 16 are flush brothers from our NINE-YEAR-OLD SIRE REGARD and Pathfinder® donor G A Colossal Anne 013, who is in active flush donor service at FIFTEEN YEARS OLD. She is also the dam of G A Certainty 155, the reference sire of lots 29-34. Longevity, fertility and dependable production are packed into this pedigree. Both recipient/surrogate dams were culled from the herd this fall; these Regard sons' genetics are better than the milk and mothering their surrogates provided.

GENOMIC PERCENT RANK (1-100 score. 1 is the top rank of the breed.)
 LOT 15: 1 PAP, 5 CW, 6 MW, 25 FAT, 25 Tend, 26 WW, 29 SC.
 LOT 16: 2 CW, 3 PAP, 5 MH, 12 MW, 27 WW, 18 HP, 21 YH.



G A COLOSSAL ANNE 013 —

FIFTEEN-YEAR-OLD PATHFINDER AND EMBRYO DONOR

16 G A REGARD 426

REG. +*21074390

BD 03/04/2024

Rito 707 of Ideal 3407 7075
 SAV Resource 1441
 SAV Blackcap May 4136
 G A Regard 633 *18600332
 Connealy Impression
 G A Anne 113
 G A Colossal Anne 7120
 SAV Heritage 6295
 Glasoes Gumbo 840
 Glasoes Ebony 430
 G A Colossal Anne 013 #16777033
 Glasoes Oscar 911
 Glasoes Colossal Anne 287
 Glasoes Colossal Anne 505

BW	205 adj WT	WR	Dam's Progeny Avg.	WDA
85	628	87	9-115	3.16
EPDS				
CED	BW	WW	YW	SC
-11	+5.1	+58	+98	+109
DOC	HP	Milk	RE	SC
+6	+13.8	+21	+4.9	+209

17 G A REGARD 460

REG. 21074443 BD 03/18/2024

BW	205 adj WT	WR	Dam's Progeny Avg.	WDA
87	754	101	5-97	3.74



CED	+3
BW	+3.6
WW	+73
YW	+128
SC	+2.10
DOC	+25
HP	+13.1
MILK	+23
RE	+72
SC	+201

Rito 707 of Ideal 3407
 S A V Resource 1441
 S A V Blackcap May 4136
G A Regard 633 *18600332
 Connealy Impression
G A Anne 113
 G A Colossal Anne 7120
 S A V 8180 Traveler 004
 S A V Net Worth 4200
 S A V May 2410
G A Eriskay 836 16325955
 Homestead Blockbuster 409
Glasoes Eriskay 219
 Glasoes Eriskay 004

Good personality and good production performance.
 The Regard sons are the rancher's kind, and Lots 17 and 18 bring on the visual appeal of Regard.
GENOMIC PERCENT RANK
 2 SC, 4 PAP, 6 MH, 8 MW, 15 FAT, 16 YH, 19 Doc, 21 WW, 22 HP, 23 YW, 28 CEM.

18 G A REGARD 431

REG. * 21074440 BD 03/08/2024

BW	205 adj WT	WR	Dam's Progeny Avg.	WDA
87	885	119	3-108	4.45



CED	+2
BW	+3.8
WW	+83
YW	+145
SC	+.85
DOC	+29
HP	+10.6
MILK	+26
RE	+65
SC	+219

Rito 707 of Ideal 3407 7075
 S A V Resource 1441
 S A V Blackcap May 4136
G A Regard 633 *18600332
 Connealy Impression
G A Anne 113
 G A Colossal Anne 7120
 HA Outside 3008
HA Cowboy Up 5405
 HA Blackcap Lady 1602
G A Ebony 803 19227375
 GA Score 304
G A Ebony 632
 GA Ebony 333

GENOMIC PERCENT RANK
 8 Doc, 9 MH, 15 FAT, 18 CEM, 22 YW, 25 PAP, 26 MW, 28 CW, 30 WW.

19 G A REGARD 443

REG. *21074414 BD 03/13/2024

BW	205 adj WT	WR	Dam's Progeny Avg.	WDA
84	775	104	2-107	3.74



CED	BW	WW	YW	SC	DOC	HP	MILK	RE	SC
+2	+2.2	+57	+98	+68	+5	+15.8	+22	+36	+208

Rito 707 of Ideal 3407 7075
 SAV Resource 1441
 SAV Blackcap May 4136
G A Regard 633 *18600332
 G A Anne 113
Connealy Impression
 G A Colossal Anne 7120

X

Ellingson Roughrider 4202
 Ressler Roosevelt 901
 Mohnen Jilt 539
 G A Pride 168 20205230
 G A Power Tool 479
 G A Pride 619
 Glasoes Pride 247

20 G A REGARD 445

REG. 21074444 BD 03/13/2024

BW	205 adj WT	WR	Dam's Progeny Avg.	WDA
85	762	102	4-108	3.86

Rito 707 of Ideal 3407 7075
 SAV Resource 1441
 SAV Blackcap May 4136
G A Regard 633 *18600332
 Connealy Impression
 G A Anne 113
 G A Colossal Anne 7120

X

Connealy Packer 547
Connealy Arsenal 2174
 Black Rice of Conanga 9529
G A Colossal Anne 905 #19626724
 G A Montana 453
G A Colossal Anne 762
 G A Anne 266

EPDS				
CED	BW	WW	YW	SC
+1	+2.3	+68	+124	+1.53
DOC	HP	Milk	RE	SC
+29	+15.3	+29	+93	+260

GENOMIC PERCENT RANK (1-100 score, 1 is the top rank of the breed.)
 3 CW. 5 RE. 6 Doc. 7 FAT. 8 HP. 9 YW. 11 MW. 15 SC. 21 YH. 23 Tend. 31 WW.

21 G A REGARD 453

REG. 21074445 BD 03/14/2024

BW	205 adj WT	WR	Dam's Progeny Avg.	WDA
85	674	91	5-97	3.43

Rito 707 of Ideal 3407 7075
 SAV Resource 1441
 SAV Blackcap May 4136
G A Regard 633 *18600332
 Connealy Impression
 G A Anne 113
 G A Colossal Anne 7120

X

V A R Generation 2100
V A R Heritage 5038
 SJH Complete of 6108 1564
G A Eriskay 848 19227335
 Glasoes BC 205
G A Eriskay 439
 G A Eriskay 219

EPDS				
CED	BW	WW	YW	SC
+2	+1.6	+54	+93	+1.74
DOC	HP	Milk	RE	SC
+25	+13.4	+33	+72	+245

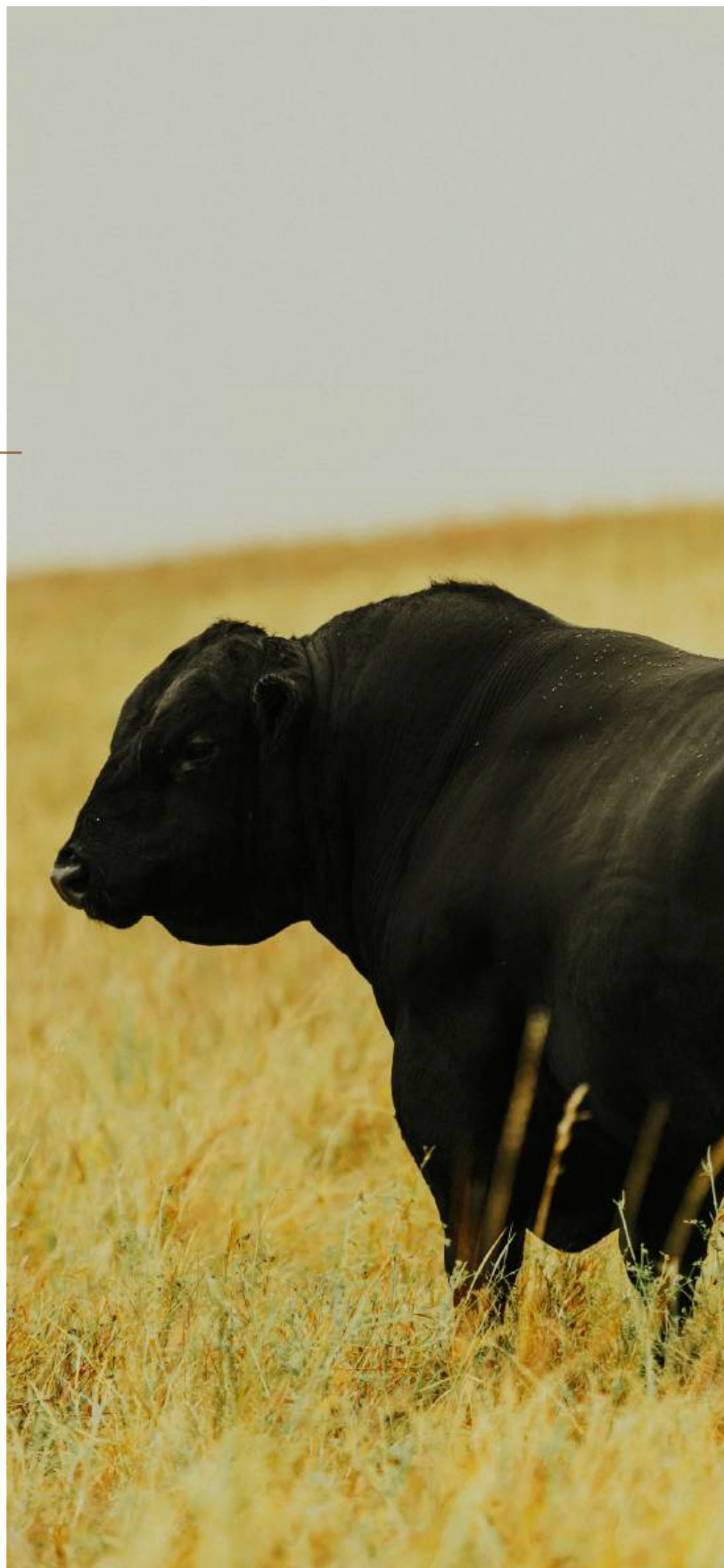
BULL

the foundation of power

Great bulls come from great cows at Glasoe Angus. We replenish our herd with females who carry generations of the G A prefix dating back to 1973. Our Pathfinder® donors have all raised 8-12 consecutive calves at side before entering our embryo program. Our long-lasting and proven cow families are bred and built to thrive on the Northern Plains. More than fifty years of meticulous selection and in-herd performance testing back our bulls' maternal pedigrees.

Unlike a number of seedstock businesses, we also test our bulls against leading AI sires in our embryo program, AI service and natural service. REGARD (photo on right) is our nine-year-old sire utilized in all aspects of our breeding and the sire of the rancher's kind LOTS 15-21. CERTAINTY, the sire of LOTS 29-34, raised several sons that out-performed popular national sires. Here, every single calf is weighed, registered, sire-verified and genomically tested to provide our customers with not just the look but the data they deserve. Our promise to you . . .

Bred to perform. Built to last.



DURABILITY. DOCILITY. DOMINANCE.

www.glasoeangus.com

SAV RESOURCE 1441

REG. 17016597

SIRE TO LOT 22

Resource, father to G A Regard 633, Resource has been an international presence in multiple cattle breeds for his sheer ability to improve seedstock performance in Black, Red Angus, Simmental, and Balancer programs.

Our Resource son, LOT 22, offers the rare opportunity to add direct descendants of this legendary sire to your herd. Countless producers chose Resource to stamp progeny with superior muscle, fleshing ability and pure mass into a moderate and sound design. More than 19,000 registered progeny carry Resource's name; he remains a landmark Pathfinder® sire whose EPDs and reputation continue to be held in high regard after thousands of progeny performances have been recorded and tested against other pedigrees.



Rito N Bar
RR Rito 707
 Eriskay of Rollin Rock 3
Rito 707 of Ideal 3407 7075 +13066860
 Ideal 1418 of 8103 4286
Ideal 3407 of 1418 076
 Ideal 076 of 692 8375

Sitz Traveler 8180
SAV 8180 Traveler 004
 Boyd Forever Lady 8003
SAV Blackcap May 4136 *14739095
 SAF 598 Bando 5175
SAV May 2397
 SAV May 7238

PRODUCTION/MATERNAL/MANAGEMENT							
CED	BW	WW	YW	YH	SC		
+0	+4.1	+69	+130	-1	+1.08		
HP	CEM	MILK	MW	MH	\$EN		
+11.7	+0	+17	+90	-1	-25		
DOC	CLAW	ANGLE	PAP	HS			
+22	+38	+39	-.77	+.68			
CARCASS/\$VALUES							
CW	MARB	RE	FAT	\$F	\$B	\$W	\$C
+53	-.03	+1.10	+0.13	+94	+119	+50	+202



R R Rito 707
 Rito 707 of Ideal 3407 7075
 Ideal 3407 of 1418 076
SAV Resource 1441 #*17016597
 SAV 8180 Traveler 004
 SAV Blackcap May 4136
 SAV May 2397
 Glasoes Forward 931
GA Montana 216
 GA Minabelle 709
GA Coquette 564 #18314494
 PA Power Tool 9108
GA Coquette 307
 GA Coquette 162

**G A COQUETTE 564.
DAM OF LOT 22**

CED	BW	WW	YW	SC	DOC	HP	MILK	RE	SC
+8	+2.0	+68	+120	+1.12	+18	+16.4	+25	+1.02	+236

Resource 466 hails from ten-year-old Pathfinder® G A Coquette 564, a daughter of our esteemed 2012 G A Montana 216. She raised a full brother, G A Remedy 250, who sold for \$17,000 to Fleck Angus at our 2023 Annual Bull Sale. Remedy remains in active natural service at Fleck Angus.



The Farm is more
 THAN LAND AND CROPS.
 IT IS A FAMILY'S
 HERITAGE AND FUTURE.

G A ERA 207

REG. 20593098

SIRE TO LOT 23-28

He Sells

This pedigree powerhouse with exceptional disposition hails from S A V Resource, Connealy Impression, Woodhill Foresight, and N Bar Emulation EXT – all Pathfinder® sires. His maternal pedigree included two generations of Pathfinder® donors: G A Anne 113 and G A Colossal 7120, who is in the top and bottom of his family tree. He has been used exclusively in our herd during the 2023 and 2024 breeding seasons, and he has several sons featured in this year's sale. We are retaining all his daughters. His carcass merit earns the Targeting the Brand Certified Angus Beef stamp.

23 G A ERA 207

REG. +*20593098

BD 2/28/2022

BW	205 adj WT	WR	Dam's Progeny Avg.	WDA
88	752	103	11-109	3.80



Rito 707 of Ideal 3407 7075
SA V Resource 1441
 SAV Blackcap May 4136
G A Regard 633 *18600332
 Connealy Impression
G A Anne 113
 GA Colossal Anne 7120



Papa Forte 1921
Woodhill Foresight
 Bon View Gammer 85
G A Colossal Anne 7120 #+15992084
 N Bar Emulation EXT
Glasoes Colossal Anne 505
 Glasoes Colossal Anne 364

PRODUCTION/MATERNAL/MANAGEMENT

CED	BW	WW	YW	YH	SC
-5	+6.2	+64	+115	+6	+1.84
HP	CEM	MILK	MW	MH	SEN
+8.7	+0	+25	+79	+6	-24
DOC	CLAW	ANGLE	PAP	HS	
+25	+59	+43	-2.67	+87	

CARCASS/VALUES

CW	MARB	RE	FAT	\$F	\$B	\$W	\$C
+62	+66	+54	-.037	+120	+175	+41	+265



24

G A ERA 484

REG. *21074430 BD 04/08/2024

BW	205 adj WT	WR	Dam's Progeny Avg.	WDA
85	761	102	11-106	3.85



SAV Resource 1441
G A Regard 633
 G A Anne 113
G A Era 207 +*20593098
 Woodhill Foresight
G A Colossal Anne 7120
 Glasoes Colossal Anne 505
 X
 Connealy Forward
Glasoes Forward 931
 G A Eline 622
G A Eriskay 276 #17429046
 Hoff Head of The Class SC534
Glasoes Eriskay 211
 Glasoes Nor Eriskay 154

CED	BW	WW	YW	SC	DOC	HP	MILK	RE	SC
-3	+4.0	+61	+108	+1.43	+27	+8.3	+32	+45	+203

Era 484 is backed by our powerful Pathfinder G A Eriskay 276. This THIRTEEN-YEAR-OLD dam earns an average wean ratio of 106 on 11 progeny with a 367-day calving interval and is AI due with her twelfth calf. She is a donor prospect who raised our herd sire G A Raindance 922, whose sons were featured in our sales for several years. Her Era son may be a full month behind in birth/days of age but has made big gains in earning front pen status on sale day.



PATHFINDER® G A ERISKAY 276.
PICTURED AS A COMING-THIRTEEN YEAR OLD

GENOMIC PERCENT RANK

DETERMINED BY ANGUSGS GENETIC TESTING
Ranks are based on 1,592,532 animals as of 5/24/2024

25 G A ERA 477

REG. 21074437

BD 04/01/2024

BW	205 adj WT	WR	Dam's Progeny Avg.	WDA
91	737	99	6-106	3.82



SAV Resource 1441
G A Regard 633
 G A Anne 113
G A Era 207 +*20593098
 Woodhill Foresight
G A Colossal Anne 7120
 Glasoes Colossal Anne 505

VAR Generation 2100
 Sandpoint Blackbird 8809

G A Eriskay 703 #18918656
 Glasoes Forward 931
G A Eriskay 276
 Glasoes Eriskay 211

PATHFINDER® G A ERISKAY 276.
PICTURED AS A COMING-THIRTEEN YEAR OLD

CED	BW	WW	YW	SC	DOC	HP	MILK	RE	SC
+1	+4.4	+67	+114	+1.15	+22	+11.3	+34	+63	+243

Two generations of Pathfinder dams back Era 477. Lot 24's dam is the granddam of Era 477. Era 477's dam is due with her seventh consecutive calf. Neither dam, like all of our dams in natural service, have ever had a hoof trimmed on our ranch. Consider Lots 24 and 25 for their similar pedigrees and proven maternal performance, fertility and longevity.

26 G A ERA 498

REG. *21074431

BD 04/22/2024

SAV Resource 1441
G A Regard 633
 G A Anne 113
G A Era 207 +*20593098
 Woodhill Foresight
G A Colossal Anne 7120
 Glasoes Colossal Anne 505

SydGen C C & 7
G A Complete 152
 G A Eriskay 855
G A Eline 548 #18318973
 Connealy Impression
G A Eline 263
 G A Eline 805

BW	205 adj WT	WR	Dam's Progeny Avg.	WDA
83	736	99	7-105	3.87
EPDS				
CED	BW	WW	YW	SC
+3	+3.8	+69	+121	+1.07
DOC	HP	Milk	RE	SC
+28	+11.4	+24	+44	+235

CED = Calving Ease Direct
 BW = Birth Weight
 WW = Weaning Weight
 YW = Yearling Weight
 DMI = Dry Matter Intake
 YH = Yearling Height
 SC = Scrotal Circumference

Doc = Docility
 FS Claw = Foot Score Claw
 FS Angle = Foot Score Angle
 PAP = Pulmonary arterial pressure
 HS = Hair Shed
 HP = Heifer Pregnancy
 CEM = Calving Ease Maternal
 Milk = Maternal Milk

MW = Mature Weight
 MH = Mature Height
 CW = Carcass Weight
 Marb = Marbling
 RE = Ribeye Area
 FAT = Fat Thickness
 Tend = Tenderness

27 G A ERA 473

REG. *21074407 BD 03/31/2024

BW	205 adj WT	WR	Dam's Progeny Avg.	WDA
78	754	101	1-101	3.70



SAV Resource 1441
GA Regard 633

GA Anne 113

GA Era 207 +*20593098

Woodhill Foresight

GA Colossal Anne 7120

Glases Colossal Anne 505

Hoover No Doubt

Baldrige Pappy

Baldrige Isabel B061

GA Colossal Anne 113 20205204

GA Pendleton 926

GA Colossal Anne 224

GA Anne 052

CED	BW	WW	YW	SC	DOC	HP	MILK	RE	SC
+4	+1.1	+59	+107	+1.02	+14	+11.2	+40	+58	+256

28 G A ERA 490

REG. 21074402 BD 04/12/2024



SAV Resource 1441
GA Regard 633

GA Anne 113

GA Era 207 +*20593098

Woodhill Foresight

GA Colossal Anne 7120

Glases Colossal Anne 505

Hoover No Doubt

Baldrige Pappy

Baldrige Isabel B061

GA Pride 111 20205264

KM Broken Bow 002

GA Pride 915

GA Pride 723

BW	205 adj WT	WR	Dam's Progeny Avg.	WDA
85	689	93	2-93	3.42

EPDS				
CED	BW	WW	YW	SC
+1	+4.2	+68	+120	+1.31
DOC	HP	Milk	RE	SC
+1.23	+10.8	+25	+1.80	+270

G A CERTAINTY 155

REG. 20205218

SIRE TO LOT 29-34

Certainty's FIFTEEN-YEAR-Old dam, G A Colossal Anne 013, is a capacious, broody Pathfinder® powerhouse donor. She boasts a 115 average wean ratio with nine consecutive calves. Several of her ET calves sired by Resource are due via recipient dams this spring. Certainty's daughters exhibit great fertility, a feminine look and excellent mothering ability.

Exuding sheer force and presence, Certainty is the careful culmination of generations of G A breeding and pedigree. His revered maternal grandsire, Glasoes Gumbo 840, was the first Glasoe sire to break the 800-pound adjusted 205-day landmark in 2008. Certainty carries Gumbo's esteemed lineage of performance forward and earned his mark with a record-breaking 914 pounds at 205 days in 2021 and weighed 1,548 pounds as a yearling. His superior length of spine, smooth style and expansive muscular bearing result in a masculine beauty of a bull.



MOGCK Sure Shot
Mogck Bullseye
 Mogck Mary 1255
Hoover No Doubt #+*17882682
 SydGen C C & 7
Miss Blackcap Ellston J2
 Miss Blackcap Ellston D 154

 SAV Heritage 6295
Glasoes Gumbo 840
 Glasoes Ebony 430
G A Colossal Anne 013 #16777033
 Glasoes Oscar 911
Glasoes Colossal Anne 287
 Glasoes Colossal Anne 505

PRODUCTION/MATERNAL/MANAGEMENT

CED	BW	WW	YW	YH	SC
-9	+5.5	+81	+145	+1.0	+1.12
HP	CEM	MILK	MW	MH	\$EN
+14.1	+11	+24	+94	+1.3	-31
DOC	CLAW	ANGLE	PAP	HS	
+10	+4.7	+4.8	-.27	+4.6	

CARCASS/\$VALUES

CW	MARB	RE	FAT	\$F	\$B	\$W	\$C
+86	+43	+99	+067	+132	+175	+58	+279



29 G A SURE SHOT 474

REG. 21074392

BD 04/01/2024

BW	205 adj WT	WR	Dam's Progeny Avg.	WDA
79	810	109	3-101	4.09



Mogck Bullseye
Hoover No Doubt
 Miss Blackcap Ellston J2
G A Certainty 155 *20205218
 Glasoes Gumbo 840
G A Colossal Anne 013
 Glasoes Colossal Anne 287

X
 Coleman Charlo 0256
SAV 654X Rainmaster 6849
 SAV Blackcap May 4136

G A Pride 020 19884613
 G A Power Tool 479

G A Pride 618
 G A Pride 147

CED	BW	WW	YW	SC	DOC	HP	MILK	RE	SC
+2	+3.5	+81	+139	+1.28	+9	+10.8	+23	+85	+276

Sure Shot. He shot his shot to earn the number one 205-day weight of the Certainty progeny at 810 pounds. His dam is a square-made, deep-ribbed female AI bred with her fourth consecutive calf. Her 2016 Pathfinder® dam is bred to G A Major Player 331 (Lot 2 from our 2024 bull sale) who sold to Brandon Erickson for \$16,000.

GENOMIC PERCENT RANK (1-100 score, 1 is the top rank of the breed.)
 4 CEM. 4 CW. 9 RE. 10 WW. 19 PAP. 22 MH. 23 YW. 23 SC.

32 G A CERTAINTY 4102

REG. *21074410

BD 05/04/2024

Mogck Bullseye
Hoover No Doubt
 Miss Blackcap Ellston J2
G A Certainty 155 *20205218
 Glasoes Gumbo 840
G A Colossal Anne 013
 Glasoes Colossal Anne 287

X
 Hoover No Doubt
Baldrige Pappy
 Baldrige Isabel B061
G A Minnabelle 145 20205215
 R/M Turning Point 1C94

G A Minnabelle 512
 GA Minnabelle 334

BW	205 adj WT	WR	Dam's Progeny Avg.	WDA
76	794	107	2-107	3.91
EPDS				
CED	BW	WW	YW	SC
-4	+3.7	+83	+133	+133
DOC	HP	Milk	RE	SC
+5	+17.5	+21	+76	+268



30 G A SURE BET 486

REG. 21074448

BD 04/09/2024

BW	205 adj WT	WR	Dam's Progeny Avg.	WDA
83	801	108	4-113	4.15



Mogck Bullseye
Hoover No Doubt
 Miss Blackcap Ellston J2
G A Certainty 155 *20205218
 Glasoes Gumbo 840
G A Colossal Anne 013
 Glasoes Colossal Anne 287
 Summitcrest Complete 1P556
KM Broken Bow 002
 Summitcrest Princess 0P12
G A Eriskay 908 19628890
 G A Montana 453
G A Eriskay 785
 G A Eriskay 443

CED	BW	WW	YW	SC	DOC	HP	MILK	RE	SC
+3	+2.7	+91	+152	+65	+2	+14.8	+18	+1.05	+298

Another Certainty son that boasts 800 plus pounds for his adjusted 205-day weight, Sure Bet also excels on paper. His Genomic Percent Rank, which is determined by genetic test results, exceeds the top 10 percent of the breed in multiple categories to include scoring in the top 2 percent for weaning weight and carcass weight, the top 4 percent for mature weight, the top 6 percent for ribeye and the top 7 percent for yearling weight.

31 G A CERTAINTY 492

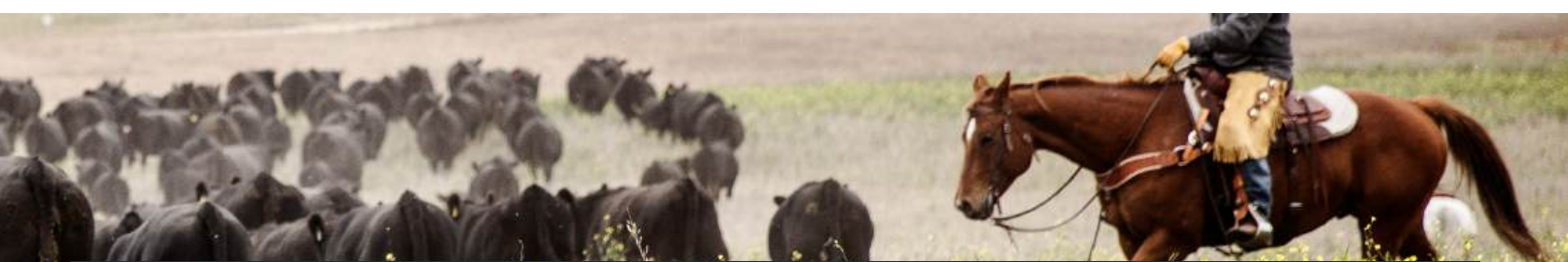
REG. 21074451

BD 04/13/2024

Mogck Bullseye
Hoover No Doubt
 Miss Blackcap Ellston J2
G A Certainty 155 *20205218
 Glasoes Gumbo 840
G A Colossal Anne 013
 Glasoes Colossal Anne 287
 SAV Resource 1441
G A Reign 610
 GA Colossal Anne 311
G A Colossal Anne 960 19626677
 Brooks Connection 0327
G A Colossal Anne 485
 G A Colossal Anne 7120

BW	205 adj WT	WR	Dam's Progeny Avg.	WDA
74	685	92	4-93	3.57

EPDS				
CED	BW	WW	YW	SC
+2	+2.8	+71	+125	+1.38
DOC	HP	Milk	RE	SC
+13	+12.8	+24	+63	+217



33 G A SURE THING 493

REG. *21074435 BD 04/14/2024

BW	205 adj WT	WR	Dam's Progeny Avg.	WDA
76	804	108	7-101	4.17



Mogck Bullseye
 Hoover No Doubt
 Miss Blackcap Ellston J2
GA Certainty 155 *20205218
 Glasoes Gumbo 840
 GA Colossal Anne 013
 Glasoes Colossal Anne 287
 Rito 707 of Ideal 3407 7075
 SAV Resource 1441
 SAV Blackcap May 4136
GA Eline 614 *18600352
 Connealy Impression
 GA Eline 263
 GA Eline 805

**G A MINNABELLE 394 AS A BRED HEIFER.
 PATERNAL SISTER TO LOTS 29-34**

CED	BW	WW	YW	SC	DOC	HP	MILK	RE	SC
+1	+2.8	+83	+146	+7.4	-2	+14.4	+22	+7.8	+240

Sure Thing also tipped the scales at more than 800 pounds for his adjusted 205-day weight of 804 pounds. He hails from one of our most stylish 2016 Resource daughters, G A Eline 614. She is due with her eighth consecutive calf and showcases a deep rib, rounded hind quarter and easy-fleshing ability.

34 G A CERTAINTY 4107

REG. 21074447 BD 05/15/2024

Mogck Bullseye
 Hoover No Doubt
 Miss Blackcap Ellston J2
GA Certainty 155 *20205218
 Glasoes Gumbo 840
GA Colossal Anne 013
 Glasoes Colossal Anne 287
 Rito 707 of Ideal 3407 7075
SAV Resource 1441
 SAV Blackcap May 4136
GA Eriskay 852 19227336
 G A Montana 216
GA Eriskay 443
 G ABC 241

BW	205 adj WT	WR	Dam's Progeny Avg.	WDA
83	687	92	5-97	3.6
EPDS				
CED	BW	WW	YW	SC
-9	+5.2	+76	+134	+31
DOC	HP	Milk	RE	SC
+17	+13.4	+20	+82	+225

GENOMIC PERCENT RANK (1-100 score. 1 is the top rank of the breed.)
 4 CEM. 8 CW. 10 WW. 10 Tend. 11 YW. 11 MW. 20 HP. 20 RE. 29 FS Angle. 34 FS Claw.

HOFFMAN THEDFORD

REG. 19820180

SIRE TO LOT 35

Theford, a son of the great Bar R Jet Black 5063, offers great birth to wean spread with muscle, style and sheer athleticism. He provided double-digit calving ease and superior maternal traits to include fertility, milk production, and calving ease maternal. He earns multiple \$Value Index EPDs within the top ten percent of the breed – to include Maternal Weaned Calf Value (\$M), Weaned Calf Value (\$W), Feedlot Value (\$F), and Combined Value (\$C).



PRODUCTION/MATERNAL/MANAGEMENT

CED	BW	WW	YW	YH	SC
+13	+5	+78	+143	+7	+2.28
HP	CEM	MILK	MW	MH	\$EN
+17.2	+9	+34	+58	+8	-19
DOC	CLAW	ANGLE	PAP	HS	
+18	+57	+37	+1.80	+55	

CARCASS/\$VALUES

CW	MARB	RE	FAT	\$F	\$B	\$W	\$C
+71	+52	+93	-.006	+131	+182	+80	+325

Connealy Consensus 7229
Connealy Black Granite
 Eura Elga of Conanga 9109
Bar R Jet Black 5063 *18389838
 Sitz Upward 307R
Bar R Iris Anita 0113
 Bar R Anita 7081

MOGCK Sure Shot
KG Solution 0018
 KG Rito Lady 8724
HA Rito Lady 3839 #17651108
 HA Program 5652
HA Rito Lady 0622
 HA Rito Lady 8395

S A V PRESIDENT 6847

REG. 18578964

SIRE TO LOT 36

President was the world record and top-selling bull of the 2017 S A V Sale at \$750,000 to Herbster Angus. His dam, S A V Blackcap May 4136, is the number one income-producing dam in S A V history with more than \$10 million in progeny sales. Multiple President daughters serve with excellent maternal ability and superior performance in the Schaff herd.



PRODUCTION/MATERNAL/MANAGEMENT

CED	BW	WW	YW	YH	SC
+4	+3.5	+72	+122	+0	+37
HP	CEM	MILK	MW	MH	\$EN
+9.7	-1	+23	+65	-.2	-16
DOC	CLAW	ANGLE	PAP	HS	
+28	+38	+41	+1.81	+32	

CARCASS/\$VALUES

CW	MARB	RE	FAT	\$F	\$B	\$W	\$C
+39	+01	+88	-.037	+75	+104	+67	+200

O C C Focus 813F
O C C Paxton 730P
 O C C Blackbird 736K
Coleman Charlo 0256 #+*16879074
 Sitz Traveler 8180
Bohi Abigale 6014
 SAV Abigale 6062

Sitz Traveler 8180
SAV 8180 Traveler 004
 Boyd Forever Lady 8003
SAV Blackcap May 4136 *14739095
 SA F 598 Bando 5175
SAV May 2397
 SAV May 7238

35 G A THEDFORD 412

REG. *21074696 BD 02/25/2024

BW	205 adj WT	WR	Dam's Progeny Avg.	WDA
74	790	106	1-106	3.59



Connealy Black Granite
 Bar R Jet Black 5063
 Bar R Iris Anita 0113
Hoffman Thedford +*19820180
 KG Solution 0018
 HA Rito Lady 3839
 HA Rito Lady 0622

SAV 654X Rainmaster 6849
 GA Rainmaster 031
 GA Colossal Anne 627

GA Anita 221 20505199
 GA Genesis 721
 GA Anita 007
 GA Anita 825

CED	BW	WW	YW	SC	DOC	HP	MILK	RE	SC
+8	+1.8	+96	+161	+74	+24	+14.5	+17	+61	+300

Thedford 412 delivered a big birth to wean spread, solid feet, a gentle disposition and big mass solely off the milk of his first-calf heifer dam and our northern prairie grasses in drought late summer and fall. None of our calves are exposed to calf creep at any point between birth and their 205-day weights. The dams have access to salt blocks and a mineral lick tub and are not provided any other supplemental nutrition either during that timeframe. Thedford 412 earned the top 25 percent or higher in all the SVALUE indexes.

GENOMIC PERCENT RANK (1-100 score, 1 is the top rank of the breed.)
 1 WW. 4 YW. 5 CW. 6 MH. 7 YH. 9 MW. 13 Doc. 19 FS Angle.

36 G A PRESIDIO 416

REG. *21074388 BD 02/29/2024

O C C Paxton 730P
Coleman Charlo 0256
 Bohi Abigale 6014
SAV President 6847 #18578964
 SAV 8180 Traveler 004
SAV Blackcap May 4136
 SAV May 2397

Papa Forte 1921
 Woodhill Foresight
 Bon View Gammer 85
GA Colossal Anne 7120 #+15992084
 N Bar Emulation EXT
 Glasoes Colossal Anne 505
 Glasoes Colossal Anne 364

BW	205 adj WT	WR	Dam's Progeny Avg.	WDA
99	739	102	11-109	3.71

EPDS				
CED	BW	WW	YW	SC
-7	+6.9	+71	+117	+1.67

DOC	HP	Milk	RE	SC
+18	+8.5	+24	+74	+218

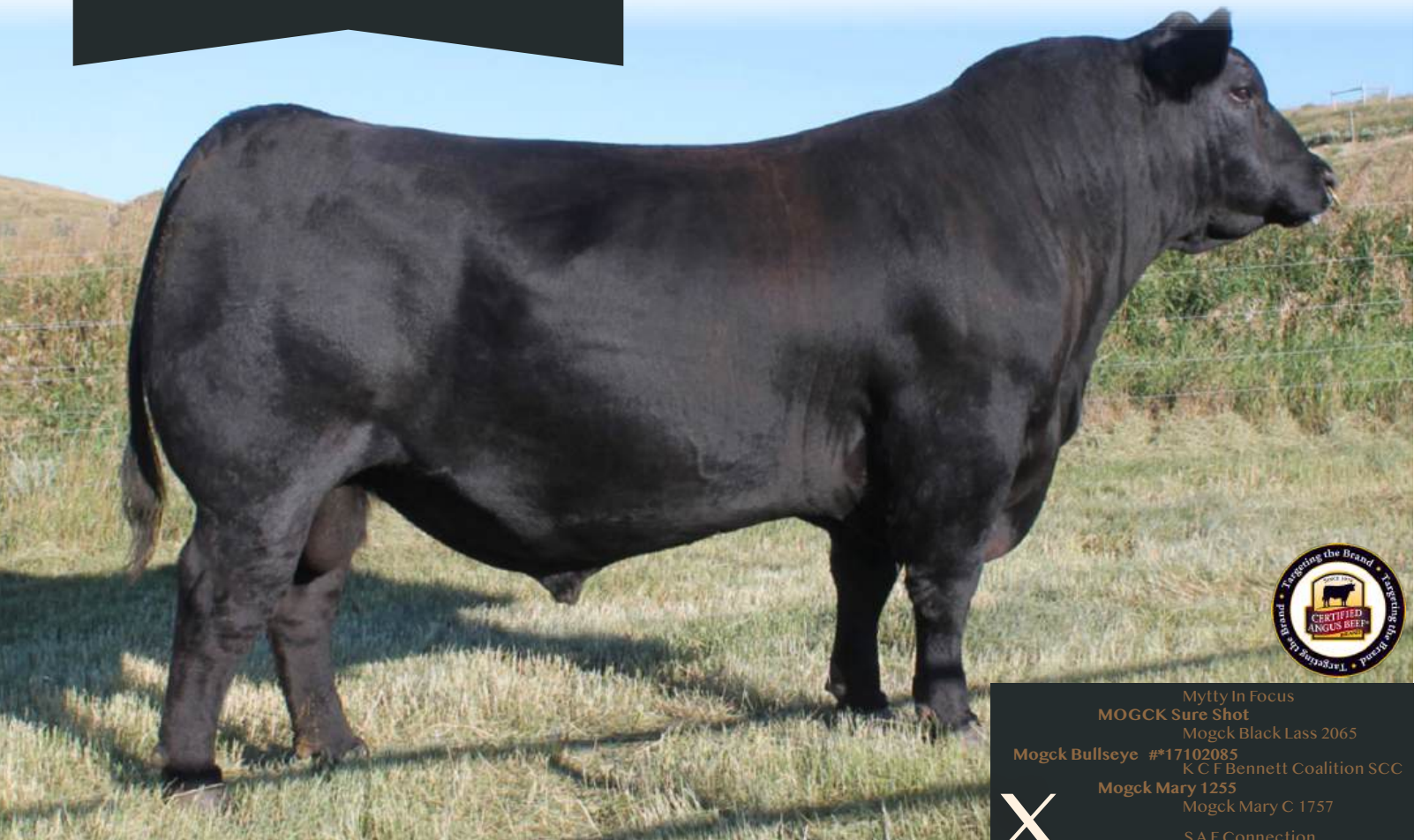
HOOVER NO DOUBT

REG. 17882682

SIRE TO LOT 37

Hoover No Doubt, who sired our G A Certainty 155, provided superior carcass merit, hoof structure, width of base and a sound and stylish frame. His visual appeal and gentle disposition garnered national attention and top-selling progeny at multiple production sales.

PRODUCTION/MATERNAL/MANAGEMENT							
CED	BW	WW	YW	YH	SC		
-3	+4.8	+76	+140	+5	+1.82		
HP	CEM	MILK	MW	MH	SEN		
+7.6	+11	+10	+77	+6	-14		
DOC	CLAW	ANGLE	PAP	HS			
+30	+41	+37	+4.10	+38			
CARCASS/SVALUES							
CW	MARB	RE	FAT	\$F	\$B	\$W	SC
+72	+1.03	+97	+0.26	+130	+204	+51	+316



Mytty In Focus
 MOGCK Sure Shot
 Mogck Black Lass 2065
 Mogck Bullseye #*17102085
 K C F Bennett Coalition SCC
 Mogck Mary 1255
 Mogck Mary C 1757
 S A F Connection
 SydGen C C & 7
 SydGen Forever Lady 4087
 Miss Blackcap Ellston J2 *16697586
 T C Gridiron 258
 Miss Blackcap Ellston D154
 Miss Blackcap Ellston A269



37 G A NO DOUBT 437

REG. +*21074434 BD 03/10/2024

MOGCK Sure Shot
 Mogck Bullseye
 Mogck Mary 1255
Hoover No Doubt #*17882682
 SydGen C C & 7
 Miss Blackcap Ellston J2
 Miss Blackcap Ellston D154
 S A V Heritage 6295
 Glasoes Gumbo 840
 Glasoes Ebony 430
G A Colossal Anne 013 #16777033
 Glasoes Oscar 911
 Glasoes Colossal Anne 287
 Glasoes Colossal Anne 505



BW	205 adj WT	WR	Dam's Progeny Avg.	WDA
92	704	100	9-115	3.57
EPDS				
CED	BW	WW	YW	SC
-15	+6.6	+72	+127	+1.07
DOC	HP	Milk	RE	SC
+21	+7.6	+19	+62	+249

V A R POWER PLAY 7018

REG. 18717078

SIRE TO LOT 38

A son of the prolific and powerful Sandpoint Blackbird 8809, Power Play earned an impressive birth to wean spread of 71 pounds to 891 pounds. He earns the Targeting the Brand Certified Angus Beef stamp while offering calving ease, docility and great production performance.

PRODUCTION/MATERNAL/MANAGEMENT							
CED	BW	WW	YW	YH	SC		
+8	+2.1	+84	+148	+3	+74		
HP	CEM	MILK	MW	MH	SEN		
+8.1	+12	+22	+92	+4	-29		
DOC	CLAW	ANGLE	PAP	HS			
+29	+54	+51	+99	+1.06			
CARCASS/\$VALUES							
CW	MARB	RE	FAT	SF	\$B	\$W	\$C
+58	+82	+54	+027	+100	+159	+79	+264



Vermilion Payweight J847
 Basin Payweight 006S
 Basin Lucy 3829
Basin Payweight 1682 #+*17038724
 HARB Pendleton 765 JH
 21AR O Lass 7017
 21AR O Lass F24A

X

Connealy Lead On
Connealy Onward
 Altune of Conanga 6104
Sandpoint Blackbird 8809 +*16143141
 G A R Grid Maker
Riverbend Blackbird 4301
 Riverbend Blackbird 2204

38 G A POWER PLAY 451

REG. 21197684

BD 03/14/2024

Basin Payweight 006S
Basin Payweight 1682
 21AR O Lass 7017
V A R Power Play 7018 #+*18717078
 Connealy Onward
Sandpoint Blackbird 8809
 Riverbend Blackbird 4301

X

Coleman Charlo 0256
S A V President 6847
 S A V Blackcap May 4136
G A Colossal Anne 193 *20205262
 Brooks Connection 0327
G A Colossal Anne 4100
 G A Colossal Anne 013

BW	205 adj WT	WR	Dam's Progeny Avg.		WDA
83	pending	-	-	-	-
EPDS					
CED	BW	WW	YW	SC	
1+2	1+3.7	1+87	1+150	1+85	
DOC	HP	Milk	RE	SC	
1+24	1+10.6	1+24	1+60	+275	

RESSLER B-52 222

REG. +*20546084

SIRE TO LOT 39-44

He Sells

We purchased B-52 222, a son of BAR B-52, at the 2023 Ressler Production Sale. He offers length of spine, muscle and frame, and a gentle disposition, along with an exceptional EPD profile. He scores in the top 10 percent or higher in Wean Weight, Yearling Weight, Residual Average Daily Gain, Mature Weight, Carcass Weight, Ribeye, Weaned Calf Value, Feedlot Value, Beef Value, and Combined Value.

39 RESSLER B-52 222

REG. +*20546084

BD 02/21/2022

BW	205 adj WT	WR	Dam's Progeny Avg.	WDA
96	780	115	-	3.86



KM Broken Bow 002
Casino Bomber N33
 Casino Annie K48
BAR B-52 +*19529394
 S Chisum 6175
Miss Wix 125 of SAF
 Miss Wix 841 of SA F

 WMR Timeless 458
MOGCK Timeless 1252
 MOGCK Rosebud 2576
Ressler M Entello 422 #*17903734
 Mohnen Kaboom 477
MOGCK Entello 1919
 MOGCK Entello 1446

PRODUCTION/MATERNAL/MANAGEMENT							
CED	BW	WW	YW	YH	SC		
+5	+1.7	+98	+176	+1.5	+63		
HP	CEM	MILK	MW	MH	\$EN		
+11.2	+11	+33	+127	+1.3	-53		
DOC	CLAW	ANGLE	PAP	HS			
+27	+48	+43	+2.03	+64			
CARCASS/\$VALUES							
CW	MARB	RE	FAT	\$F	\$B	\$W	\$C
+95	+51	+1.18	-.023	+141	+196	+91	+315

GENOMIC PERCENT RANK (1-100 score. 1 is the top rank of the breed.)
 1 YW. 1 CW. 3 YH. 3 MW. 3 MH. 4 WW. 7 Doc. 7 CEM. 12 Milk. 14 FAT.

40 G A B-52 468

REG.21074438

BD 03/23/2024

BW	205 adj WT	WR	Dam's Progeny Avg.	WDA
83	871	117	6-101	4.31



G A Minnabelle 334
GREAT GRANDDAM

CED	BW	WW	YW	SC	DOC	HP	MILK	RE	SC
-3	+4.8	+101	+178	+1.24	+19	+13.3	+25	+81	+271

B-52 468 bombarded the scale with a whopping 871 pounds for his adjusted 205-day weight. He adds frame, mass and muscle with genomics to back real-world performance. His maternal pedigree harkens back to three consecutive generations of Pathfinders® and the esteemed Pathfinder® donor, G A Minabelle 709 – the donor dam of lots 1 and 2. From Lot 40's 2017 dam to his 2015 granddam to his 2013 great-granddam to his 2007 great-granddam, every maternal generation remains productive in our herd.

GENOMIC PERCENT RANK (1-100 score. 1 is the top rank of the breed.)

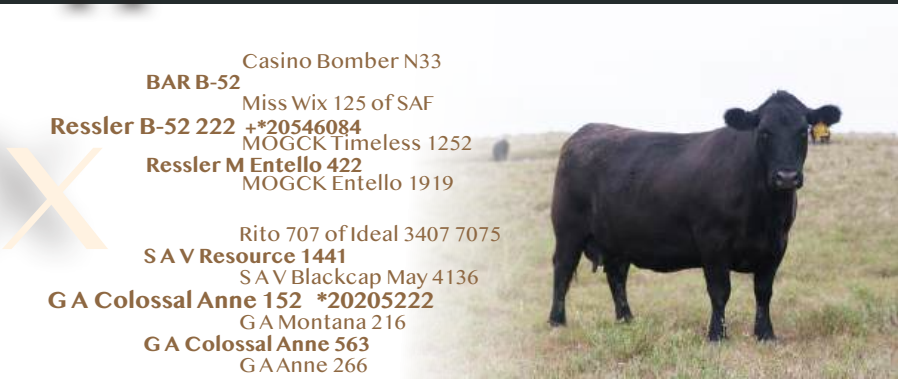
1 YW (yearling weight), 1 YH (yearling height), 1 MH (mature height), 1 CW (carcass weight), 2 WW (weaning weight), 2 MW (mature weight), 6 FAT, 9 FS Angle (foot score angle), 9 CEM (calving ease maternal), 20 SC (scrotal circumference), 21 HP (heifer pregnancy).

- Casino Bomber N33
- BAR B-52**
- Miss Wix 125 of SAF
- Ressler B-52 222** **+*20546084**
- MOGCK Timeless 1252
- Ressler M Entello 422**
- MOGCK Entello 1919
- Mohnen Substantial 272
- G A Substantial 520**
- GA Anne 316
- G A Minnabelle 760** **18917265**
- R/M Turning Point 1C94
- G A Minnabelle 512**
- GA Minnabelle 334

41 G A B-52 480

REG. *21074454

BD 04/04/2024



- Casino Bomber N33
- BAR B-52**
- Miss Wix 125 of SAF
- Ressler B-52 222** **+*20546084**
- MOGCK Timeless 1252
- Ressler M Entello 422**
- MOGCK Entello 1919
- Rito 707 of Ideal 3407 7075
- SAV Resource 1441**
- SAV Blackcap May 4136
- G A Colossal Anne 152** ***20205222**
- GA Montana 216
- G A Colossal Anne 563**
- GA Anne 266

BW	205 adj WT	WR	Dam's Progeny Avg.	WDA
78	704	95	1-94	3.46

EPDS				
CED	BW	WW	YW	SC
+5	+2.1	+80	+149	+54
DOC	HP	Milk	RE	SC
+19	+10.7	+22	+1.17	+260

G A Colossal Anne 563
GRANDDAM



42 G A B-52 483

REG. 21074449 BD 04/07/2024

BW	205 adj WT	WR	Dam's Progeny Avg.	WDA
80	713	96	4-94	3.70



Casino Bomber N33
BAR B-52 Miss Wix 125 of SAF
Ressler B-52 222 +*20546084
 MOGCK Timeless 1252
Ressler M Entello 422
 MOGCK Entello 1919
 Rito 707 of Ideal 3407 7075
 SAV Resource 1441
 SAV Blackcap May 4136
G A Minnabelle 709 19626682
 MOGCK Timeless 1252
 G A Minabelle 709
 Glasoes Minabelle 550

CED	BW	WW	YW	SC	DOC	HP	MILK	RE	SC
+1	+1.8	+78	+149	+46	+15	+12.4	+37	+72	+236

B-52 483, a deep-bodied and square-made prospect, is closely related to Lot 40 and a grandson to G A Minabelle 709 – the Pathfinder® donor dam of Lots 1 and 2.

GENOMIC PERCENT RANK (1-100 score. 1 is the top rank of the breed.)
 2 CW, 3 YW, 4 MH, 5 Milk, 7 YH, 7 FS Angle, 7 MW, 15 CEM, 18 HP, 21 WW, 21 FS Claw, 22 FAT.

43 G A B-52 472

REG. *21074409 BD 03/30/2024

Casino Bomber N33
BAR B-52 Miss Wix 125 of SAF
Ressler B-52 222 +*20546084
 MOGCK Timeless 1252
Ressler M Entello 422
 MOGCK Entello 1919
 baldridge Xpand x743
Baldrige Colonel C251
 Baldrige Isabel Y69
G A Eline 144 20213752
 G A Triumph 622
G A Eline 875
 G A Eline 341

BW	205 adj WT	WR	Dam's Progeny Avg.	WDA
76	782	92	2-95	3.33
EPDS				
CED	BW	WW	YW	SC
+2	+9	+75	+142	+1.24
DOC	HP	Milk	RE	SC
+29	+9.5	+32	+73	+226

EXPLANATION OF EPDS

THE AMERICAN ANGUS ASSOCIATION

MANAGEMENT EPDS

Docility (Doc), is expressed as a difference in yearling cattle temperament, with a higher value indicating more favorable docility. It predicts the average difference of progeny from a sire in comparison with another sire's calves. In herds where temperament problems are not an issue, this expected difference would not be realized.

Claw Set EPD (Claw), is expressed in units of claw-set score, with a lower EPD being more favorable indicating a sire will produce progeny with more ideal claw set. The ideal claw set is toes that are symmetrical, even and appropriately spaced.

Foot Angle EPD (Angle), is expressed in units of foot-angle score, with a lower EPD being more favorable indicating a sire will produce progeny with more ideal foot angle. The ideal is a 45-degree angle at the pastern joint with appropriate toe length and heel depth.

Pulmonary arterial pressure EPD (PAP), is expressed in millimeters of Mercury (mmHg), with a lower EPD being more favorable indicating a sire should produce progeny with a lower PAP score. PAP score is an indicator of susceptibility to high altitude disease commonly experienced at elevations greater than 5,500 feet. Selection for this trait aims to improve the genetic potential for a sire's progeny to have lower PAP scores thus a lower chance of contracting high altitude disease increasing the environmental adaptability of cattle living in mountain areas.

Hair Shed EPD, is expressed in units of hair shed score, with a lower EPD being more favorable indicating a sire should produce progeny who shed their winter coat earlier in the spring. Selection for this trait should improve the genetic potential for a sire's progeny to shed off earlier increasing the environmental adaptability of cattle living in heat stressed areas and producers grazing endophyte-infected (hot) fescue.

CARCASS EPDS

Carcass Weight EPD (CW), expressed in pounds is a predictor of the differences in hot carcass weight of a sire's progeny compared to progeny of other sires.

Marbling EPD (Marb), expressed as a fraction of the difference in USDA marbling score of a sire's progeny compared to progeny of other sires.

Ribeye Area EPD (RE), expressed in square inches, is a predictor of the difference in ribeye area of a sire's progeny compared to progeny of other sires.

Fat Thickness EPD (Fat), expressed in inches, is a predictor of the differences in external fat thickness at the 12th rib (as measured between the 12th and 13th ribs) of a sire's progeny compared to progeny of other sires.

PRODUCTION EPDS

Calving Ease Direct (CED), is expressed as a difference in percentage of unassisted births, with a higher value indicating greater calving ease in first-calf heifers. It predicts the average difference in ease with which a sire's calves will be born when he is bred to first-calf heifers.

Birth Weight EPD (BW), expressed in pounds, is a predictor of a sire's ability to transmit birth weight to his progeny compared to that of other sires.

Weaning Weight EPD (WW), expressed in pounds, is a predictor of a sire's ability to transmit weaning growth to his progeny compared to that of other sires.

Yearling Weight EPD (YW), expressed in pounds, is a predictor of a sire's ability to transmit yearling growth to his progeny compared to that of other sires.

Residual Average Daily Gain (RADG), expressed in pounds per day, is a predictor of a sire's genetic ability for postweaning gain in future progeny compared to that of other sires, given a constant amount of feed consumed.

Dry Matter Intake (DMI), expressed in pounds per day, is a predictor of difference transmitting ability for feed intake during the postweaning phase, compared to that of other sires.

Yearling Height EPD (YH), is a predictor of a sire's ability to transmit yearling height, expressed in inches, compared to that of other sires.

Scrotal Circumference EPD (SC), expressed in centimeters, is a predictor of the difference in transmitting ability for scrotal size compared to that of other sires.

MATERNAL EPDS

Heifer Pregnancy (HP), is a selection tool to increase the probability or chance of a sire's daughters becoming pregnant as first-calf heifers during a normal breeding season. A higher EPD is the more favorable direction and the EPD is reported in percentage units.

Calving Ease Maternal (CEM), is expressed as a difference in percentage of unassisted births with a higher value indicating greater calving ease in first-calf daughters. It predicts the average ease with which a sire's daughters will calve as first-calf heifers when compared to daughters of other sires.

Maternal Milk EPD (Milk), is a predictor of a sire's genetic merit for milk and mothering ability as expressed in his daughters compared to daughters of other sires. In other words, it is that part of a calf's weaning weight attributed to milk and mothering ability.

Herds (MkH) indicate the number of herds from which daughters are reported.

Daughters (Mkd) reflects the number of daughters that have progeny weaning weight records included in the analysis.

Mature Weight EPD (MW), expressed in pounds, is a predictor of the difference in mature weight of daughters of a sire compared to the daughters of other sires.

Mature Height EPD (MH), expressed in inches, is a predictor of the difference in mature height of a sire's daughters compared to daughters of other sires.

Cow Energy Value (\$EN), expressed in dollar savings per cow per year, assesses differences in cow energy requirements as an expected dollar savings difference in daughters of sires. A larger value is more favorable when comparing two animals (more dollars saved on feed energy expenses). Components for computing the cow \$EN savings difference include lactation energy requirements and energy costs associated with differences in mature cow size.

\$VALUE INDEXES

\$Value indexes, an economic selection index allows multiple change in several different traits at once pertaining to a specific breeding objective. The \$Value is an estimate of how future progeny of each sire are expected to perform, on average, compared to progeny of other sires if the sires were randomly mated to cows and if calves were exposed to the same environment. [More Info](#)

Maternal Weaned Calf Value (\$M), an index, expressed in dollars per head, predicts profitability differences from conception to weaning with the underlying breeding objective assuming that individuals retain their own replacement females within herd and sell the rest of the cull female and all male progeny as feeder calves. The model assumes commercial producers will replace 25% of their breeding females in the first generation and 20% of their breeding females in each subsequent generation. Traits included are as follows: calving ease direct, calving ease maternal, weaning weight, milk, heifer pregnancy, docility, mature cow weight, claw set and foot angle.

Weaned Calf Value (\$W), an index, expressed in dollars per head, to predict profitability differences in progeny due to genetics from birth to weaning. The underlying objective being producers will retain 20% of the female progeny as replacements and sell the rest of the cull females and their male counterparts as feeder calves. Traits included are as follows (in no particular order): birth weight, weaning weight, milk, and mature cow weight.

Feedlot Value (\$F), an index, expressed in dollars per head, to predict profitability differences in progeny due to genetics for postweaning feedlot merit compared to the progeny of other sires. The underlying objective assumes producers will retain ownership of cattle through the feedlot phase and sell fed cattle on a carcass weight basis, but with no consideration of premiums or discounts for quality and yield grade. Traits contributing directly to the index are as follows: yearling weight (gain), carcass weight and dry-matter intake.

Grid Value (\$G), an index, expressed in dollars per carcass, to predict profitability differences in progeny due to genetics for carcass grid merit compared to progeny of other sires. The underlying objective assumes producers will market cattle on an above-industry-average carcass grid. Traits included in the index are as follows (in no particular order): carcass weight, marbling, ribeye area, and fat.

Beef Value (\$B), a terminal index, expressed in dollars per carcass, to predict profitability differences in progeny due to genetics for postweaning and carcass traits. This terminal index assumes commercial producers wean all male and female progeny, retain ownership of these animals through the feedlot phase and market these animals on a carcass grid. Traits included in the index are as follows: yearling weight, dry-matter intake, marbling, carcass weight, ribeye area and fat.

Combined Value (\$C), an index, expressed in dollars per head, which includes all traits that make up both Maternal Weaned Calf Value (\$M) and Beef Value (\$B) with the objective that commercial producers will replace 20% of their breeding females per year with replacement heifers retained within their own herd. The remaining cull heifer and steer progeny are then assumed to be sent to the feedlot where the producers retain ownership of those cattle and sell them on a quality-based carcass merit grid. Expected progeny differences (EPDs) directly influencing a combined index: calving ease direct (CED) and maternal (CEM), weaning weight (WW), yearling weight (YW), maternal milk (Milk), heifer pregnancy (HP), docility (DOC), mature cow weight (MW), foot angle (Angle), claw set (Claw), dry matter intake (DMI), marbling (Marb), carcass weight (CW), ribeye area (RE) and fat thickness (Fat).

SITZ RESILIENT 20108

REG. 19057457

SIRE TO LOT 45

Resilient was the record-setting \$165,000 bull of the fall 2019 SITZ Angus Ranch Sale. His dam is the daughter of the now-deceased Pathfinder Sire SITZ Top Game 561X. Top Game's Pathfinder® dam is considered the greatest daughter of Onward produced in the SITZ program. She was utilized as a donor at SITZ and then sold for half interest for \$200,000.

Resilient offers excellent claw and angle EPDs, carcass merit, calving ease and production performance. His daughters are feminine, sure-footed and showcase an attractive pattern. Our Resilient daughters are not as docile as other pedigrees but showcase excellent fertility and great mothering ability as first-calf heifers.



Benfield Substance 8506
Mohnen Substantial 272
 Mohnen Glyn Mawr Elba 1758
Sitz Stellar 726D #*18397542
 Connealy Final Product
SITZ Pride 200B
 Sitz Pride 308Y

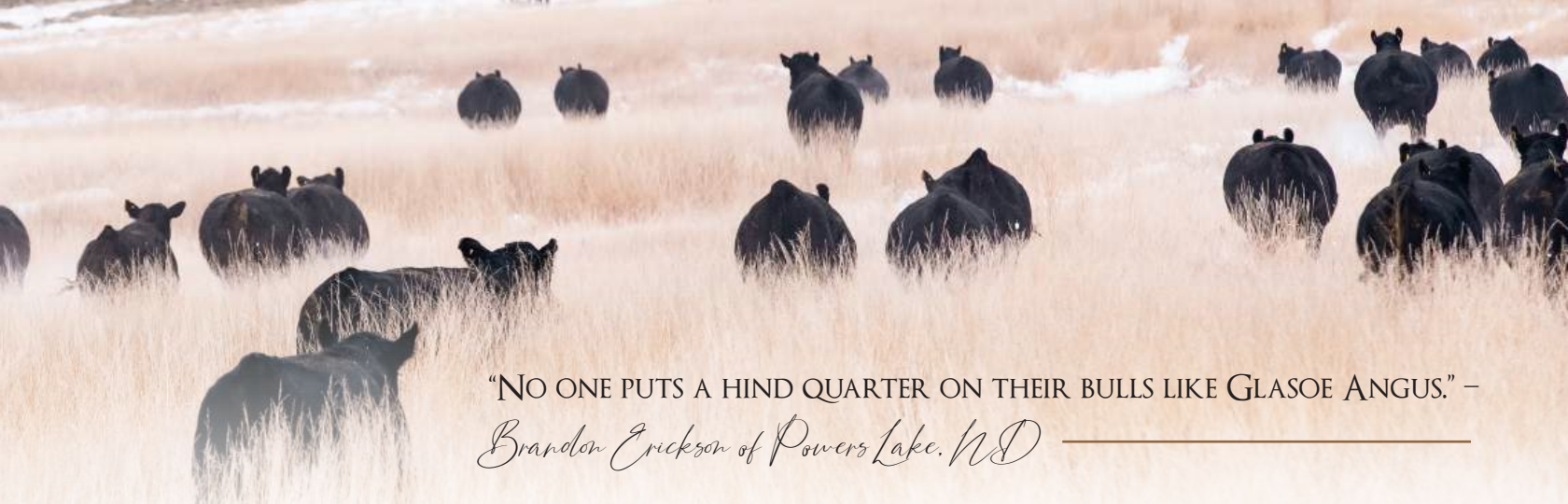
GDAR Game Day 449
Sitz Top Game 561X
 Sitz Pride 88T
Sitz Miss Burgess 1856 *18395931
 Sitz Rainmaker 10899
Sitz Miss Burgess 4381
 Sitz Miss Burgess 1609

PRODUCTION/MATERNAL/MANAGEMENT

CED	BW	WW	YW	YH	SC
+5	+7	+79	+137	+5	+1.14
HP	CEM	MILK	MW	MH	\$EN
+17.7	+7	+24	+54	+4	-11
DOC	CLAW	ANGLE	PAP	HS	
+5	+33	+36	-1.60	+18	

CARCASS/\$VALUES

CW	MARB	RE	FAT	SF	\$B	\$W	SC
+44	+94	+55	+033	+81	+145	+89	+281



“NO ONE PUTS A HIND QUARTER ON THEIR BULLS LIKE GLASOE ANGUS.” –
Brandon Erickson of Powers Lake, ND

44	G A RESILIENT 429	BW	205 adj WT	WR	Dam's Progeny Avg.	WDA
	REG. *21074411 BD 03/06/2024	79	762	102	2-105	3.65



Mohnen Substantial 272
Sitz Stellar 726D
 SITZ Pride 200B
Sitz Resilient 10208 *19057457
 Sitz Top Game 561X
Sitz Miss Burgess 1856
 Sitz Miss Burgess 4381

Ellingson Roughrider 4202
 Ressler Roosevelt 901
Mohnen Jilt 539
G A Colossal Anne 156 20205231
 SAV Resource 1441
 G A Colossal Anne 644
 G A Colossal Anne 240

CED	BW	WW	YW	SC	DOC	HP	MILK	RE	SC
+5	+2.3	+89	+157	+2.02	+23	+15.9	+18	+41	+275

Superior feet, maternal and paternal fertility, and production performance provide a resilient and revered foundation of strength for Lot 44. He is backed by five Pathfinder pedigrees out of eight: Mohnen Substantial 272, Sitz Top Game 561X, Ellingson Roughrider 4202, S A V Resource 1441, and G A Colossal Anne 240, who earned a 106 wean ratio on eight consecutive calves before she was sold bred at our 2021 Annual Female Sale. Resilient's 429 dam is on track for Pathfinder® status as well: she earns a 105 wean ratio on her first two progeny and is AI bred to Resilient again. Our first set of Resilient daughters are delivering calves now, and they are tremendous mothers with excellent fertility, udder attachment and teat structure. A few have been protective at birth so I pay strict attention to Resilient matings to ensure docility is protected on the maternal lineage. Resilient 429's dam has excellent docility.

GENOMIC PERCENT RANK (1-100 score. 1 is the top rank of the breed.)
 1 SC (scrotal circumference), 4 FS Claw (claw foot score), 4 PAP (pulmonary arterial pressure), 10 HP (heifer pregnancy), 11 WW (weaning weight), 12 YW (yearling weight), 21 HS (hair shed), 22 FS Angle (angle foot score).

DEER VALLEY GROWTH FUND

REG. 18827828

SIRE TO LOT 45

Growth Fund, born in 2017, gained popularity over time and led registrations for the breed in 2023 due to visual appeal combined with a tremendous birth to wean spread from 70 pounds at birth to 946 pounds; he earns heifer-qualified, double digit calving ease while scoring in the top 3 and 2 percent of the breed for wean weight and yearling weight EPDs. He is a Pathfinder® sire with multiple daughters excelling in maternal production.

PRODUCTION/MATERNAL/MANAGEMENT							
CED	BW	WW	YW	YH	SC		
+10	+1.5	+91	+168	+6	+77		
HP	CEM	MILK	MW	MH	SEN		
+13.2	+12	+26	+108	+6	-39		
DOC	CLAW	ANGLE	PAP	HS			
+22	+48	+47	+4.25	+97			
CARCASS/\$VALUES							
CW	MARB	RE	FAT	\$F	\$B	\$W	\$C
+87	+54	+74	+0.071	+133	+178	+94	+298



Vermilion Payweight J847
Basin Payweight 006S
 Basin Lucy 3829
Basin Payweight 1682 #+*17038724
 HARB Pendleton 765 J H
21AR O Lass 7017
 21AR O Lass F24A

X

Sitz Upward 307R
Plattemere Weigh Up K360
 Barbara of Plattemere 337
Deer Valley Rita 36113 +*17785214
 G A R New Design 5050
Deer Valley Rita 9457
 G A R Ext 614

45 G A GROWTH FUND 424

REG. *21075759

BD 03/04/2024

Basin Payweight 006S
Basin Payweight 1682
 21AR O Lass 7017
Deer Valley Growth Fund #+*18827828
 Plattemere Weigh Up K360
Deer Valley Rita 36113
 Deer Valley Rita 9457



Coleman Charlo 0256
SAV Rainfall 6846
 SAV Blackcap May 4136
G A Ebony 220 20547102
 G A Reign 610
G A Ebony 079
 G A Ebony 239

BW	205 adj WT	WR	Dam's Progeny Avg.	WDA
69	671	90	1-90	3.03
EPDS				
CED	BW	WW	YW	SC
+14	-1.1	+67	+126	+55
DOC	HP	Milk	RE	SC
+11	+13.2	+38	+78	+299

Heifer-qualified. Excellent hoof scores. Maternal strength. High \$Values EPDs. Look to 2026 for more Growth Funds at our sale.

G A STORM 016

REG. 19889229

SIRE TO LOTS 46-49

Storm is a testament to our commitment to provide calving ease and heifer-qualified bulls that still bring production performance to the table. Storm offers superior length of spine and frame with a smooth front shoulder and elongated head in order for calves to arrive easy with the capacity to thrive from the get-go. We have retained multiple daughters for gentle dispositions, maternal power and pedigreed.

Storm's dam, G A Colossal Anne 224, has raised eleven consecutive calves with a tremendous birth to weaning spread. A Pathfinder, she averages 96 for her birth ratio and 109 for her wean ratio on those decade's worth of calves. Her progeny are smooth, straight, long and well-ribbed. She is a strong prospect for our donor program. Erickson Ranch owns Storm and will use him again in their breeding program as a five-year-old. His sons carry forward his longevity, fertility and calving ease.



O C C Paxton 730P
Coleman Charlo 0256
Bohi Abigale 6014
SA V Rainfall 6846 #+*18578963
SA V 8180 Traveler 004
SA V Blackcap May 4136
SA V May 2397

HARB Pendleton 765 J H
GA Pendleton 926
GA Minabelle 709
GA Colossal Anne 224 #17484509
Glasoes Forward 882
GA Anne 052
GA Anne 808

PRODUCTION/MATERNAL/MANAGEMENT

CED	BW	WW	YW	YH	SC
+13	-1.3	+59	+102	+5	+77
HP	CEM	MILK	MW	MH	SEN
+11.8	+17	+28	+64	+5	-18
DOC	CLAW	ANGLE	PAP	HS	
+21	+50	+42	+39	+55	

CARCASS/\$VALUES

CW	MARB	RE	FAT	\$F	\$B	\$W	\$C
+43	+37	+40	-.003	+93	+131	+62	+232

46

G A STORM 455

REG. *21074419

BD 03/16/2024



Coleman Charlo 0256
SA V Rainfall 6846
 SAV Blackcap May 4136
G A Storm 016 19889229
 G A Pendleton 926
G A Colossal Anne 224
 G A Anne 052
 Plattemere Weigh Up K360
Connealy Shamrock
 Elbanna of Conanga 1209
G A Eriskay 225 20546853
 V A R Heritage 5038
G A Eriskay 848
 G A Eriskay 439

BW	205 adj WT	WR	Dam's Progeny Avg.	WDA
76	700	94	1-94	3.22
EPDS				
CED	BW	WW	YW	SC
+2	+8	+63	+109	+50
DOC	HP	Milk	RE	SC
+18	+11.7	+22	+31	+197

47

G A STORM 456

REG. *21074416

BD 03/16/2024

BW	205 adj WT	WR	Dam's Progeny Avg.	WDA
78	797	107	1-107	370



CED	BW	WW	YW	SC	DOC	HP	MILK	RE	SC
+5	+1.9	+79	+134	+30	+26	+8.1	+13	+78	+236

*G A Minnabelle 354 as a bred heifer.
 Paternal sister to lots 46-50*

Storm 456 offers a combo of calving ease with upper-level production performance founded upon a gentle disposition and good feet. His maternal genetics are also special; his heifer dam ratioed 107 for his adjusted 205-day weight, and she is backed by THREE generations of Pathfinders. Her 2014 dam and 2010 granddam are embryo donors. FIFTEEN-YEAR-OLD G A Colossal Anne 013 is in full-time donor service and raised G A Certainty 155 – the reference sire for lots 29-34. G A Colossal Anne 4100 has raised calves at side while in donor service and is AI bred to S A V Courage for her ninth consecutive calf. None of these dams, like all of our cows in natural service, have ever had a hoof trim at the ranch. Longevity, fertility and dominant performance are stacked into Lot 47's genetics.

Coleman Charlo 0256
SA V Rainfall 6846
 SAV Blackcap May 4136
G A Storm 016 19889229
 G A Pendleton 926
G A Colossal Anne 224
 G A Anne 052
 SAV President 6847
SA V America 8018
 SAV Madame Pride 0075
G A Colossal Anne 201 +*20569533
 Brooks Connection 0327
G A Colossal Anne 4100
 G A Colossal Anne 013

48

G A STORM 465

REG. *21074417

BD 03/21/2024

Coleman Charlo 0256
SA V Rainfall 6846
 SAV Blackcap May 4136
G A Storm 016 19889229
 G A Pendleton 926
G A Colossal Anne 224
 G A Anne 052

Coleman Charlo 0256
SA V Rainfall 6846
 SAV Blackcap May 4136
G A Minnabelle 203 20547106
 G A Genesis 721
G A Minnabelle 014
 G A Minnabelle 760

BW	205 adj WT	WR	Dam's Progeny Avg.	WDA
67	611	82	1-82	2.79
EPDS				
CED	BW	WW	YW	SC
+9	-.4	+57	+103	+1.63
DOC	HP	Milk	RE	SC
+19	+12.4	+26	+10	+214

Heifer-qualified. Good docility, scrotal circumference and claw foot score. Top 35 percent for \$M (maternal weaned calf value).

49

G A STORM 356

REG. 20818511

BD 03/20/2023

Coleman Charlo 0256
SA V Rainfall 6846
 SAV Blackcap May 4136
G A Storm 016 19889229
 G A Pendleton 926
G A Colossal Anne 224
 G A Anne 052

PA Power Tool 9108
GA Score 304
 G A Pride 149
G A Colossal Anne 518 18314497
 G A Duke 617
G A Colossal Anne 869
 G A Colossal Anne 533

BW	205 adj WT	WR	Dam's Progeny Avg.	WDA
73	675	89	6-101	3.44
EPDS				
CED	BW	WW	YW	SC
+13	-2.1	+47	+79	+46
DOC	HP	Milk	RE	SC
+9	+11.4	+28	+35	+173

This coming two-year-old was utilized for natural service in our herd last summer. He is highly heifer-qualified with a negative BW EPD and double-digit calving ease direct. His yearling weight was 1,192 pounds with a scrotal circumference of 38 cm.



ABOVE AVERAGE GOALS REQUIRE
TARGETED BULLS

-CABCATTLE.COM

The best beef starts with quality Angus genetics

Our Targeting the Brand™ logo can help you leverage high-quality [seedstock](#) genetics or [feeder calves](#) to assist customers in seeing the value of their genetic potential. Whether you're marketing bulls that meet our genetic requirements or you're looking for an opportunity to get more for calves that have greater potential to qualify for the brand through [AngusLink](#)™, make the brand work for you.

How It Works

Look for the Targeting the Brand™ logo to identify cattle that meet our baseline genetic recommendations. There are two ways to use the logo: 1) The logo highlights registered Angus bulls with greater genetic potential to produce calves that meet the most challenging specifications of CAB. Only 1 in 4 non-parent Angus bulls meet the [Targeting the Brand](#)™ requirements. 2) In conjunction with [AngusLink](#)™, feeder calves enrolled for the [Genetic Merit Scorecard](#) can be identified with the Targeting the Brand™ logo if the group meets a 125 grid score or higher.

G A STORMER 218

REG. 20547101

SIRE TO LOT 51-53

He Sells

HE SELLS! Stormer is a super-moderate linebacker of a bull whose calves come light, fast and easy and then hit the ground running. We selected him for natural service as a yearling in 2023 and also used him last year. Stormer's 2024 calf crop averaged 70 pounds at birth with the heaviest weighing 78 pounds. We did not assist with a single birth, and we recommend him for service on heifers, as well as mature dams to increase calving ease and to moderate or down-size frame.

His sire, S A V Rainfall 6846, has more than 10,000 registered progeny and hails from the iconic flush of S A V Blackcap May 4136 and Coleman Charlo 0256, which also produced President, Governor and Raindance. Stormer scores in the top 25 percent of the breed EPDs for light birth weight (BW) cow energy value (\$EN), Milk (Milk), Hair Shed (HS) and Marbling (Marb).

50 G A STORMER 218

REG. *20547101

BD 03/04/2022



BW	205 adj WT	WR	Dam's Progeny Avg.	WDA
75	729	96	3-97	3.35



O C C Paxton 730P
Coleman Charlo 0256
 Bohi Abigale 6014
S A V Rainfall 6846 #*18578963
 SAV 8180 Traveler 004
S A V Blackcap May 4136
 SAV May 2397

Coleman Charlo 0256
S A V 654X Rainmaster 6849
 SAV Blackcap May 4136
G A Pride 040 19888992
 G A Power Tool 479
G A Pride 619
 Glasoes Pride 247

PRODUCTION/MATERNAL/MANAGEMENT

CED	BW	WW	YW	YH	SC
+10	-.2	+59	+108	-.4	+81
HP	CEM	MILK	MW	MH	\$EN
+9.7	+7	+30	+25	-.4	+0
DOC	CLAW	ANGLE	PAP	HS	
+5	+49	+57	+2.29	+29	

CARCASS/\$VALUES

CW	MARB	RE	FAT	\$F	\$B	\$W	\$C
+39	+89	+22	+072	+80	+135	+67	+238

Heifer-qualified. Good maternal and paternal fertility. Top 30 percent for \$M (maternal weaned calf value).

51

G A STORMER 464

REG. *21074422

BD 03/19/2024

Coleman Charlo 0256
 SAV Rainfall 6846
 SAV Blackcap May 4136
GA Stormer 218 *20547101
 SAV 654X Rainmaster 6849
GA Pride 040
 GA Pride 619
 Ellingson Roughrider 4202
Ressler Roosevelt 901
 Mohnen Jilt 539
GA Pride 278 20505188
 GA Power Tool 479
GA Pride 619
 Glasoes Pride 247

BW	205 adj WT	WR	Dam's Progeny Avg.	WDA
70	666	90	1-90	3.05
EPDS				
CED	BW	WW	YW	SC
+8	+6	+52	+107	+1.08
DOC	HP	Milk	RE	SC
+19	+16.7	+26	-.02	+202

52

G A STORMER 4103

REG. *21074420

BD 05/04/2024

Coleman Charlo 0256
 SAV Rainfall 6846
 SAV Blackcap May 4136
GA Stormer 218 AAA *20547101
 SAV 654X Rainmaster 6849
GA Pride 040
 GA Pride 619
 SAV Resource 1441
GA Regard 633
 GA Anne 113
GA Colossal Anne 710 20505239
 GA Dakota 571
GA Colossal Anne 710
 GA Colossal Anne 530

BW	205 adj WT	WR	Dam's Progeny Avg.	WDA
78	606	96	6-107	2.77
EPDS				
CED	BW	WW	YW	SC
+6	+2.3	+67	+120	+95
DOC	HP	Milk	RE	SC
+18	+8.9	+23	+.38	+225

53

G A STORMER 488

REG. *21074421

BD 04/09/2024

Coleman Charlo 0256
 SAV Rainfall 6846
 SAV Blackcap May 4136
GA Stormer 218 *20547101
 SAV 654X Rainmaster 6849
 GA Pride 040
 GA Pride 619
 SAV Raindance 6848
GA Raindance 922
 GA Eriskay 276
GA Eriskay 267 20505243
 GA Reign 610
GA Eriskay 976
 GA Eriskay 443

BW	205 adj WT	WR	Dam's Progeny Avg.	WDA
69	621	83	1-83	2.89
EPDS				
CED	BW	WW	YW	SC
+18	-3.4	+37	+75	+0
DOC	HP	Milk	RE	SC
-7	+10.7	+28	+08	+184

Super heifer-qualified and frame down-sizer. Sleep all night with his EPDs - he earns the top 1 percent of the breed for the calving ease direct and the birth weight EPD.



COMMENTS FROM THE SALE MANAGER:

Tom Burke	Kurt Schaff	Alex Popplewell
(816) 853-2697	(816) 520-6447	(270) 566-8822

CALVING-EASE * DOCILITY * PERFORMANCE

Dear Cattlemen,

Established in 1963, the Glasoe Angus program is now five-plus decades strong and moving into its sixth. Kevin, Sydney and their family carry forward the Angus tradition established by brothers Art and Lance. With a focus on the needs of the commercial cattlemen, the Glasoe program continues to make strides forward. The upcoming sale set for March 27, 2025 is an event that you certainly cannot afford to miss.

Selling will be both yearling and two-year-old Angus bulls. Highlights include the sons of the featured sires GA Regard 633, GA Era 207 and GA Certainty 155, along with the progeny of the famous AI sires Deer Valley Growth Fund, Hoffman Thedford, SAV Magnify 1107 and Tehama Tahoe B767. A special note is that many of the bulls that will sell are well suited for use on heifers.

Remember that with the closure of Sitting Bull Livestock Auction at Williston, North Dakota, this sale will take place in the Fire Hall at Wildrose, North Dakota with the cattle displayed at the ranch nearby. It is a pleasure and privilege to work with everyone at Glasoe Angus on this monumental sale. Please don't hesitate to call on us at American Angus Hall of Fame if we can be of assistance in any way. We are here to serve.

Sincerely,

Tom Burke

Kurt Schaff

Alex Popplewell



PERFORMANCE-TESTED

GLASOE ANGUS SIRES UTILIZED IN AI & NATURAL SERVICE SINCE 2013

YEAR & NAME	OWNERS
2011 G A COMPLETE 152	GLASOE ANGUS, WILDROSE, ND
2012 G A MONTANA 216	JB ANGUS, BELFIELD, ND
2013 G A SCORE 304	STONE CREEK RANCH, AMBROSE, ND
2014 G A MONTANA 453	GLASOE ANGUS, WILDROSE, ND
2014 G A POWER TOOL 479	DENNIS JACOBSON, WILDROSE, ND
2015 G A DAKOTA 571	LOWELL MYERS, CARPIO, ND
2015 G A SUBSTANTIAL 520	GLASOE ANGUS, WILDROSE, ND
2016 G A REIGN 610	TRIPLE C RANCH, GOOCHLAND, VA
2016 G A TRIUMPH 622	BIWER RANCH/BRAD BIWER, STANLEY, ND
2016 G A REGARD 633	ERICKSON RANCH, POWERS LAKE, ND
2017 G A GENESIS 721	STONE CREEK RANCH, AMBROSE, ND
2019 G A COLONEL 929	TRIPLE C RANCH, GOOCHLAND, VA
2019 G A RAINDANCE 922	ERICKSON RANCH, POWERS LAKE, ND
2020 G A EXHILARATION 027	ERICKSON RANCH, POWERS LAKE, ND
2020 G A RAINMASTER 031	GLASOE ANGUS, WILDROSE, ND
2021 G A CERTAINTY 155	TRIPLE C RANCH, GOOCHLAND, VA
2021 G A REALIST 137	EASTFORK ANGUS, EPPING, ND
2022 G A ERA 207	TRIPLE C RANCH, GOOCHLAND, VA
2022 G A STORMER 218	GLASOE ANGUS, WILDROSE, ND
2023 G A TARGET 305	GLASOE ANGUS, WILDROSE, ND
2023 G A MAJOR PLAYER 331	ERICKSON RANCH, POWERS LAKE, ND
2023 G A REPLAY 337	WILDE ANGUS/ KAYLA HASBARGEN, BAUDETTE, MN
2023 G A REAL DEAL 366	MARCUS CHRISTENSON, POWER LAKE, ND

GLASOE ANGUS

8533 114th Ave NW, Wildrose, ND 58795

www.glasoeangus.com | 701.539.2338

DURABILITY. DOCILITY.

DOMINANCE.

1 P.M., THURSDAY, MARCH 27

WILDROSE, ND AT THE FIREHALL
BULLS ON DISPLAY AT THE RANCH

