

22nd Annual Production Sale



Monday, April 7th, 2025

1:00 pm MST

Online Internet Auction by Pelton Livestock

Open House Saturday, April 5, 2025 from 11:00-2:00 MST

FEIRING CATTLE CO.

PO Box 725

BEACH, ND 58621



**Catalog, Videos, Auction Details available
online at www.feiringcattleco.com**

22nd Annual Production Sale

Phone ♦ (701) 872-5888

Monday, April 7, 2025

Online Only Sale

Open House Saturday, April 5th

Prebidding Starts April 5th

22nd Annual Production Sale

We would like to take this opportunity to thank all of our past customers and welcome our new ones. We are very thankful for the confidence you have shown in our program over the years.

Not much changes from year to year when it comes to our cattle. We do our best to raise a consistent set of bulls that will go out and work for you. They are not pampered or babied. We expect our cows to have longevity, be fertile with great mothering ability, have good udder quality and the will to survive on what Mother Nature provides for them. The bulls are developed on their mother's milk, green grass (on most years) and hay. We want them to work for you, not for you to work for them. These bulls are tightly bred so you are the one who gets the heterotic effect in your calf crop, not us. These bulls will continue to gain weight, grow and mature while on pasture. They are what we say they are. In order for cattlemen to survive, cattle that **DO MORE FOR LESS** are necessary. Our cattle are bred to survive the ups and downs from one year to the next without extra inputs. We have strived to put together a group of bulls that fit this bill.

This year we are offering 22 coming 2-year old and 3 coming 3-Year old , 100% forage developed bulls. They have been selected for fleshing ability, calving ease, performance, soundness, disposition and maternal efficiency. This year, they went to grass May 27th and were brought home on September 27th. Once home, they were fed grass hay and alfalfa hay. We believe in letting them grow at a natural pace and don't believe in propping them up to be something they are not.

Be sure to check out our website at www.feiringcattleco.com and visit our sale page where you can find links to videos of the bulls and enter the auction site to register and bid on this year's sale. You can also view sale details at www.billpelton.com.

Our family has been in the Angus business for over 40 years and we take great pride in selling cattle with honesty and integrity. We believe in raising good, honest, hardworking cattle that will do their job converting grass into muscle and protein. We welcome you to stop in and look at the bulls anytime. They are by the house for ease of viewing. We believe they have something to offer your operation and most importantly do it by making your operation more profitable. Thank you again for your continued support.

Sincerely,

Donnie, Trish, Harley & Taylor

Home 701.872.5888 or Donnie's Cell 701.228.4622

OPEN HOUSE: This year's production sale will be hosted ONLINE ONLY at www.billpelton.com with an open house for viewing the bulls on Saturday, April 5th from 11:00-2:00 MT. Please come join us for lunch.

ONLINE AUCTION: You may bid anytime, anywhere and, on any device, (smart phone, tablet, personal computer) starting April 5th. The final bidding will start at 1:00 pm Mountain Time, Monday, April 7th. You must register to bid at <https://bid.billpelton.com> The auction will be held online-only in a "click-to-bid" format. Contact Pelton Livestock before the sale with any questions. Frequently asked questions and a demo auction are available on the auction site. If you need additional support, teaching bidders how the auction works is available over the phone by Pelton Livestock.

HOW DOES THE AUCTION END: All lots will close in lot item sale order. Extended bidding means that the LOT is not declared closed (sold) until there has been 2 minutes of inactivity on the LOT. Example: There is 60 seconds left on the lot, a bid is placed and the timer will reset to 2 minutes. Each time there is a bid within the 2 minute window, the timer will reset for another 2 minutes of extended bidding time.

BULL VIDEOS and CATALOG: Bull Videos and Digital Catalog may be viewed on our website and at www.billpelton.com

HERD HEALTH: Health and brand papers will be furnished. The bulls have been fertility tested by Dr. AJ Domek, Wibaux, MT.

DELIVERY: Free delivery on the bulls will be provided within 300 miles of Feiring Cattle Company. Once again, we are offering a \$75 hauling discount if you pick your purchase up before April 15th. We will be delivering in the 10 days following the sale.

VIEWING THE ANIMALS: Come join us for lunch at the Open House viewing on Saturday, April 5th from 11:00-2:00 MT. The bulls can also be viewed prior to sale day at the ranch 12 miles north of Beach. Give Donnie or Trish a call to set up a time at 701.872.5888 or Donnie at 701.228.4622

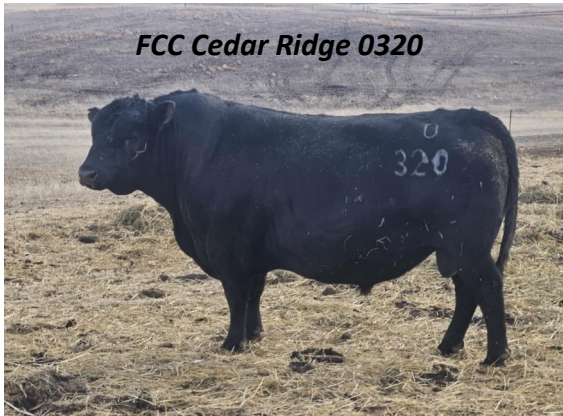
FOR QUESTIONS REGARDING REGISTERING OR BIDDING ONLINE: via electronic mail to info@billpelton.com or by contacting Darci Pelton Sachdeva at 406.794.3174.

INVOICING AND PAYMENT: By bidding on a lot item, you are agreeing to purchase the lot item if you should win. All winning bidders will receive invoices immediately following the close of sale. Invoices will be sent via electronic mail (when a working address is provided). Payment for purchases is due prior to removal or delivery of purchases unless prior arrangements have been made. Payments to be made directly to Donnie & Trisha Feiring.

INSURANCE: Purchases may be insured by contacting Ray Trudeau at MARTIN - TRUDEAU INSURANCE AGENCY at 605-996-3106 for rates and any additional information.

Bull #	Base Price	Birth Date	Sire	Dam (Dam's Sire x Maternal Grandsire)	Birth Wt.	Adj. 205 Day Wt	Dam's Udder Score	Dam's Body Condition at Calving
3501	\$4000	4/12/23	FCC Magnum 8203	9412 - FCC Cedar Ridge 7203 x DDA Cedar Ridge 2M	67	573	1	5.0
<i>Double bred Cedar Ridge on the top and bottom. Calving ease, easy fleshing and maternal performance.</i>								
3502	\$4000	4/18/23	FCC Magnum 8203	9407 - DDA Weatherby 167P x Lodge 128 G F A R	72	581	1	5.5
<i>Big outlined, long bodied and should add more lbs to your next calf crop.</i>								
3504	\$4000	4/25/23	FCC Magnum 8203	9402 - FCC Cedar Ridge 7203 x FCC Bertton 1422	67	565	1	5.0
<i>Wide based off of both ends, built right from the ground up. Keep the females out of this one.</i>								
3505	\$4000	4/25/23	FCC Cedar Ridge 0320	1705 - DDA Pondera 67U x FCC Prince of Perth 5149	62	625	1	5.5
<i>Deep ribbed, wide based and soggy.</i>								
3506	\$4000	4/27/23	FCC Magnum 8203	9423 - FCC Cedar Ridge 7203 x Prince of Perth 251	67	581	1	6.0
<i>Evenly balanced, deep flanked in a nice complete package.</i>								
3510	\$4000	5/4/23	DDA Pondera 67U	1611 - DDA Ledger 69D x HBR Eclipse 7116	71	584	1	4.5
<i>Dam weaned 10 @ 101. Out of a 14 year old cow that keeps cranking them out. Don't miss this one.</i>								
3511	\$4000	5/5/23	DDA Pondera 67U	6443 - DDA Cedar Ridge 2M x OCC Anchor 771A	69	624	1	5.0
<i>Dam weaned 6 @ 102. Calving ease deluxe, easy fleshing grass genetics.</i>								
3512	\$4000	5/5/23	FCC Magnum 8203	9445 - FCC Cedar Ridge 6210 x Prince of Perth 251	73	593	1	5.5
<i>Long bodied, correct made, and high libido. He walks the fenceline looking for females.</i>								
3513	\$4000	5/7/23	DDA Pondera 67U	0502 - FCC Cedar Ridge 5135 x DDA Ledger 69D	74	613	1	5.5
<i>Dam weaned 2 @ 101. Maternal greatness on both top and bottom. He's a female maker.</i>								
3514	\$4000	5/8/23	DDA Pondera 67U	9404 - FCC Cedar Ridge 6210 x DDA Ledger 69D	69	604	1	5.5
<i>Good performance, deep flanked and super sound on his feet and legs.</i>								
3516	\$4000	5/14/23	DDA Pondera 67U	6419 - DDA Cedar Ridge 2M x Funks Emblem 147 GFAR	79	581	2	6.0
<i>Dam weaned 6 @ 103. Calves should come easy and grow fast. His dam keeps cranking them out and maintains body condition.</i>								
3517	\$4000	5/14/23	FCC Cedar Ridge 0320	4309 - Prince of Perth 251 x DDA Emblazon 3C	76	582	1	5.5
<i>His dam is 11 years old with a beautiful udder. He's backed by longevity and maternal efficiency.</i>								
3519	\$4000	5/14/23	DDA Pondera 67U	7419 - DDA Cedar Ridge 2M x Funks Emblem 147 GFAR	75	NA	1	6.0
<i>Long bodied, deep middled and correct made. His dam keeps keep producing good ones.</i>								
3520	\$4000	5/15/23	FCC Cedar Ridge 0320	1702 - FCC Magnum 8203 x DDA Weatherby 167P	64	682	1	6.0
<i>Dam weaned 1 @ 111. Herd bull prospect. As good as it gets in a nice complete package.</i>								
3521	\$4000	5/16/23	DDA Pondera 67U	8404 - DDA Magnum 33R x DDA Medicine Man 56J	66	577	1	5.0
<i>Great Angus head, tight sheathed and long hiped.</i>								
3522	\$4000	5/17/23	DDA Pondera 67U	6405 - DDA Cedar Ridge 2M x DDA Ledger 69D	69	605	1	4.5
<i>Dam weaned 6 @ 103. Bred in longevity with a good weaning numbers.</i>								
3526	\$4000	5/21/23	DDA Pondera 67U	7412 - DDA Cedar Ridge 2M x DDA Ledger 69D	75	617	1	5.5
<i>Dam weaned 5 @ 101. If you're looking to add fleshing ability and depth of rib, this is your guy.</i>								
3527	\$4000	5/22/23	DDA Pondera 67U	0524 - FCC Cedar Ridge 6210 x DDA Ledger 69D	69	649	1	5.0
<i>Dam weaned 2 @ 105. Long bodied and well balanced from end to end. Dam is moderate and deep in her rib with a near perfect udder.</i>								
3530	\$4000	5/25/23	DDA Pondera 67U	0519 - FCC Cedar Ridge 6210 x DDA Ledger 16G	66	692	1	5.0
<i>Dam weaned 2 @ 106. He's the high performance bull in the group. He's super quiet, well balanced and correct made.</i>								
3534	\$4000	5/30/23	DDA Pondera 67U	1648 - DDA Ledger 16G x DDA Ledger 69D	69	643	2	5.0
<i>Dam weaned 11 @ 96. This bull is moderate and super easy fleshing. He's got longevity in his pedigree.</i>								
3536	\$4000	5/30/23	DDA Pondera 67U	3314 - DDA Medicine Man 56J x DDA Ledger 69D	74	635	1	6.0
<i>Dam weaned 9 @ 102. If you want rib and fleshing ability and low maintenance cattle that will convert forage, he's your guy.</i>								
3543	\$4000	6/13/23	DDA Pondera 67U	6417 - DDA Cedar Ridge 2M x DDA Ledger 69D	73	643	1	6.5
<i>Dam weaned 4 @ 102. He's long and deep from flank to flank with good performance.</i>								

Bull #	Base Price	Birth Date	Sire	Dam (Dam's Sire x Maternal Grandsire)	Birth Wt.	Adj. 205 Day Wt.	Dam's Udder Score	Dam's Body Condition at Calving
2219	\$4000	5/12/22	DDA Pondera 67U	6420—DDA Cedar Ridge 2M x DDA Ledger 16G	74	609	1	5.5
<i>Dam weaned 5 @ 102. He's long bodied and correct made. His dam cranks them out and maintains an excellent udder.</i>								
2221	\$4000	5/13/22	FCC Cedar Ridge 9219	0511 - FCC Cedar Ridge 6210 x DDA Ledger 16G	78	685	2	6.0
<i>He's evenly balanced, deep ribbed in a really complete package. Dam is double bred Ledger for maternal greatness.</i>								
2227	\$4000	5/17/22	FCC Cedar Ridge 9219	0505 - FCC Cedar Ridge 6210 x Berton of Volga 0984	71	652	1	6.0
<i>Calving ease deluxe on both the top and bottom of the pedigree! Long bodied with tons of rib, balance and eye appeal.</i>								



FCC Cedar Ridge 0320



Bull 3530



The ranch crew!



Harley and Taylor's 4-H steers raised by Kevin & Kim Plummer out of Feiring



State 4-H Livestock Judging Contest

ONLINE AUCTIONS

www.BillPelton.com/Auctions

- 01 Register**
If you are not already a user on our site, create an account.
- 02 Verify Email**
An email will be sent to email account provided. Please click link in email to activate your account.
- 03 View Auctions**
Enter auction you are interested in, create watchlist, place bids, update your preferences "Account".
- 04 Sale Day**
Login with credentials provided at registration.
- 05 For Help call**
Darci Pelton Sachdeva
(406) 794-3174