

HEADIN FOR THE PASS



Pass

CREEK ANGUS RANCH

WYOLA, MONTANA

(406) 343-2551



51ST ANNUAL

**BULL
PRODUCTION
SALE**

WEDNESDAY, APRIL 9, 2025

80 YEARLING BULLS

27 FALL BULLS

25 OPEN HEIFERS

7 STOUT 2 YEAR OLD BULLS

LUNCH 12:00 NOON

SALE 1:00 PM

*Located 1 mile South of Wyola
on Hwy 451 or 35 miles North of Sheridan, WY*

Dear Friends,

Welcome to our 51st annual bull sale. The cattle market is about as high as it ever has been. There has been more optimism in the cattle business than ever before in history. With the cattle numbers being lower than ever before, the market potentially could stay high for some time to come.

We have an excellent selection of two-year-olds, fall bulls, yearling bulls and heifers. These cattle all have excellent growth, gainability, and are some of the most efficient cattle we have ever produced.

The cattle in this year's sale all have good carcass traits, with some of them close to the top of the breed in marbling and ribeye traits. The cattle buyers are paying a premium for cattle that have a high grade of carcass value. This means more dollars in your pocket. If you want a premium on your calves when you sell, it is a must that you concentrate on good carcass values. They will also please the feeders because of the added efficiency.

The heifers in this year's sale are very nice, fleshy, and trouble-free females that will give a good calf. All these heifers have been BANGS vaccinated, given Preg Guard 10 and are ready to breed.

We would love to see all of you on Wednesday, April 9th, for the 51st annual bull sale. There is something to offer for everyone in the cattle business. We truly hope to see you all on the ninth!

Sincerely Yours,
The Rathkamp Family

FRONTIER LIVE SALE

This Sale will be broadcast live on www.frontierlivesale.com. To view a sale,

1. Create an account, if you have already done so skip to next step. To create a new account, click on the word **Registration** in the upper right hand corner. You must fill out the information requested. Then click **Create Account**. An email will be sent to your email account you provided. Please click the link in the email to activate your new account.

2. Once you click the link, your account will now be activated

3. At this point, you may click **Continue To Browse Our Site**. This will allow you to view all upcoming auctions.

4. Once you see the auction you are interested in, click **Get Approved To Bid** for absentee and live bidding.

5. Please enter your information in the form. Depending on the auctioneer, different information may be requested. Click **I agree to sale terms and conditions**. Congratulations! You are now approved for the auction. Now that you're approved you can participate in the auction and bid on its items.

6. Login on sale day with the credentials provided at registration.

Call 866-313-0123 for tech help.



Auctioneer

Kyle Shobe

(406) 366-0472 cell
(406) 538-5125 office

Sale Representatives

Darci Pelton Sachdeva (406) 794-3174
Jaramie McLean - Tri-State Livestock News (406) 938-3071
Andy Rest - Cattle Business Weekly (406) 254-7576
John Goggins - Western Ag Reporter (406) 698-4159

Sale Day Phones

Sale Barn (406) 343-2551
Kurt Rathkamp-cell (406) 679-3391
Darrell Rathkamp-cell (406) 620-7112

Video

Videos of the bulls are available online at:
www.BillPelton.com

Sale Day Conference Call

It's as easy as

1. Pre-Register for your buyer number
2. Receive toll free call in # and pin
3. Get last minute instructions for the call

*Give Todd Daniels a call now if you want to be on
the phone on sale day.*

406-426-8090

Ranch  Wise

Continuity the outstanding sale day service of Bill Pelton



Lodging

Lodging is available in Hardin, Montana, Ranchester and Sheridan, Wyoming. Call us if you need additional information.

Terms and Conditions

Cattle will sell under the Standard Terms and Conditions as recommended by the American Angus Association. Terms of sale are cash.

Supplemental Information

Announcements from the auction block take precedence over catalog information.

Liability

All persons who attend the sale do so at their own risk. Pass Creek Angus Ranch assumes no liability, legal or otherwise, for any accidents which may occur.

Breeding Soundness

All bulls passed a breeding soundness examination and semen evaluation. Dr. Matt Cherni, DVM is in charge of our herd health. Dr. Cherni will be here sale day to answer any questions, or you are welcome to contact him at 307-655-9395.



ABOVE AVERAGE GOALS REQUIRE TARGETED BULLS

Aim High

The Targeting the Brand™ logo highlights registered Angus bulls with greater genetic potential to produce calves that meet the most challenging specifications of the Certified Angus Beef® brand. Only 3 in 10 non-parent Angus bulls meet the Targeting the Brand genetic requirements.

<i>Minimum Genetic Requirements</i>	<i>Value</i>
Marbling EPD (Marb)	+0.54
Dollar Grid Carcass Index (\$G)	+46.0



For more information on Targeting the Brand™ visit CABcattle.com.

Guarantee

All bulls selling for \$4,000 or more will be covered against breeding injury for 50% of value by Pass Creek Angus if they are injured during the first breeding season. Breeding season is defined as a 90 day period following the first turn out of the bull. In case of a loss:

1. Notify Pass Creek Angus as soon as possible.
2. Verify the injury with a veterinarian; we may seek a second opinion.
3. Credit minus salvage value will be issued or a replacement bull can be supplied, if available.
4. A copy of the salvage value will be required.
5. Credit is good at any Pass Creek Angus sale and does not expire.
6. This guarantee does not cover death.
7. All claims must be made before September 1, 2025.

Discount

A \$40 rebate per bull will be given if buyer picks up bull on sale day only. Arrangements available to feed bulls until pickup can be made.

Registration Papers

All *registered bulls* will be transferred at no charge to Buyers.

Delivery

Free delivery of bulls up to 350 miles, balance at cost. Delivery begins April 16th, 2025.

In the event that you will not be able to take your bulls by April 16th, we can make arrangement to feed them until May 1st at a cost of \$2.50 per day.

Absentee Bidding

If for any reason you are unable to attend the sale, you may contact us with your requirements in a bull and we will send you a list of bulls that fit your needs and then contact one of our Sale Representatives with your bid(s) and they will do their best to get them bought for you. You may also pre-register for a buyer number by calling us and then bid from the comfort of your home by phone with one of our Sale Representatives or take advantage of our online bidding through www.frontierlivesale.com. Please be sure to follow the Frontier Live Sale instructions to sign up to bid online. We have a "Sight Unseen" Guarantee on all bulls purchased in this manner. If you don't like 'em, you don't own 'em.

All bulls are semen tested and ultrasounded.

Whole herd tested PI BVD free!!

The bulls are at the ranch so please feel free to stop by anytime and preview. If you have any questions or just want to "shoot the bull", call us here at the ranch.

EPD and \$Value Definitions

Expected Progeny Difference (EPD) is the prediction of how progeny of each animal is expected to perform relative to the progeny of other animals in the Angus breed. As data continues to accumulate, accuracy levels rise and EPDs can shift accordingly.

Calving Ease Direct (CED) is expressed as a difference in percentage of unassisted births, with a *higher value indicating greater calving ease* in first-calf heifers. It predicts the average difference in ease with which a sire's calves will be born when he is bred to first-calf heifers.

Birth Weight EPD (BW) expressed in pounds, is a predictor of transmitting ability for birth weight. The Angus breed is noted for calving-ease. A bull with a Birth Weight EPD under +2.6 is generally regarded as suitable for mating with virgin heifers.

Weaning Weight EPD (WW) expressed in pounds, is a predictor of the transmitting ability for weaning weight. An emphasized trait when marketing calves at weaning. For example, you can expect progeny from a sire with a +60 weaning EPD to weigh 30 lbs. more at weaning on average than progeny from a sire with a weaning EPD of +30.

Maternal Milk EPD (Milk) is a predictor of transmitting ability of the portion of calf weaning weight attributed to daughters' milk. An indicator of replacement female production level.

Yearling Weight EPD (YW) expressed in pounds, is a predictor of transmitting ability for yearling weight. An emphasized trait for yearling feedlot performance and profitability.

Scrotal Circumference EPD (SC), expressed in centimeters, is a predictor of the difference in transmitting ability for scrotal size compared to that of other sires.

Carcass Weight EPD (CW), expressed in pounds, is a predictor of the differences in hot carcass weight of a sire's progeny compared to progeny of other sires.

Marbling EPD (Marb), expressed as a fraction of the difference in USDA marbling score of a sire's progeny compared to progeny of other sires.

Ribeye Area EPD (RE), expressed in square inches, is a predictor of the difference in ribeye area of a sire's progeny compared to progeny of other sires.

Fat Thickness EPD (Fat), expressed in inches, is a predictor of the differences in external fat thickness at the 12th rib (as measured between the 12th and 13th ribs) of a sire's progeny compared to progeny of other sires.

Docility (Doc) EPD, is expressed as a difference in yearling cattle temperament, with a higher value indicating more favorable docility. It predicts the average difference of progeny from a sire in comparison with another sire's calves. In herds where temperament problems are not an issue, this expected difference would not be realized.

Beef Value (\$B), a terminal index, expressed in dollars per carcass, to predict profitability differences in progeny due to genetics for postweaning and carcass traits. This terminal index assumes commercial producers wean all male and female progeny, retain ownership of these animals through the feedlot phase and market these animals on a carcass grid. Traits included in the index are as follows: yearling weight, dry-matter intake, marbling, carcass weight, ribeye area and fat.

Feedlot Value (\$F), an index value expressed in dollars per head, is the expected average difference in future progeny performance for post weaning merit compared to progeny of other sires. \$F incorporates weaning weight (WW) and yearling weight (YW) EPD along with feed intake data, genomic information and trait interrelationships. Typical feedlot gain value and cost differences are accounted for in the final calculations, along with a standard set of industry values for days on feed, ration costs and cash cattle price.

Weaned Calf Value (\$W), an index value expressed in dollars per head, is the expected average difference in future progeny performance for preweaning merit. \$W includes both revenue and cost adjustments associated with differences in birth weight, weaning direct growth, maternal milk and mature cow size.

Combined Value (\$C), an index, expressed in dollars per head, which includes all traits that make up both Maternal Weaned Calf Value (\$M) and Beef Value (\$B) with the objective that commercial producers will replace 20% of their breeding females per year with replacement heifers retained within their own herd. The remaining cull heifer and steer progeny are then assumed to be sent to the feedlot where the producers retain ownership of those cattle and sell them on a quality-based carcass merit grid. Expected progeny differences (EPDs) directly influencing a combined index: calving ease direct (CED) and maternal (CEM), weaning weight (WW), yearling weight (YW), maternal milk (Milk), heifer pregnancy (HP), docility (DOC), mature cow weight (MW), foot angle (Angle), claw set (Claw), dry matter intake (DMI), marbling (Marb), carcass weight (CW), ribeye area (RE) and fat thickness (Fat).

Reference Sires



T/D Doc Ryan 049

Tattoo: 049-BB20 Tag:

DOB: 01/10/20 Reg No: 19820224

Sire:	KM Broken Bow 002	Marb:	+ 1.24
	Casino Bomber N33	Ribeye:	+ 0.97
	Casino Annie K48	\$B:	218
Dam:	G A R Phenom 7953	\$F:	137
	T/D Ruby of Tiffany 824	\$W:	63
	B/R Ruby of Tiffany 688	\$C:	346

CED	Actual	BW	AN Adj	WW	Milk	YW
Epd	BW	Epd	WW	Epd	Epd	Epd
+ 6	81	+ 1.2		+ 95	+ 27	+ 162

Certified Angus Beef

Ranks in the Top 2% for Wean Weight(WW), Yearling Weight(YW) && Carcass Weight(CW) and Top 10% in Marbling within the Angus breed



Connealy King Air

Tattoo: 868F Tag:

DOB: 07/27/18 Reg No: 19468964

Sire:	Connealy Capitalist 028	Marb:	+ 0.67
	LD Capitalist 316	Ribeye:	+ 0.63
	LD Dixie Erica 2053	\$B:	151
Dam:	Plattemere Weigh Up K360	\$F:	98
	Pasha of Conanga 557P	\$W:	67
	Pastah of Conanga 030L	\$C:	263

CED	Actual	BW	Adj	WW	Milk	YW
Epd	BW	Epd	WW	Epd	Epd	Epd
+ 18	72	-1.7	622	+ 52	+ 28	+ 101

Rank in the Top 1% in Calving Ease Direct(CED) and Top 5% in Birth Weight(BW) within the Angus Breed

Reference Sires



Pass Creek 7109 5006 0048
Tattoo: 0048-BB20 Tag: 5006
DOB: 03/21/20 Reg No: 19904938

Basin Payweight 1682	Marb:	+ 0.68
Sire: T/D Payweight 1682-7109	Ribeye:	-0.16
B/R Ruby of Tiffany 511	\$B:	159
B/R Efficient 1027	\$F:	117
Dam: Ms Pass Creek 1027 394 5006	\$W:	35
MS Pass Creek 001 182 394	\$C:	241

CED	Actual	BW	Adj	WW	Milk	YW
Epd	BW	Epd	WW	Epd	Epd	Epd
+ 0	79	+ 2.8	786	+ 64	+ 32	+ 120

Ranks in the Top 15% in Maternal Milk EPD



Pass Creek F028 0005 2097
Tattoo: 2097-BB22 Tag: 0005
DOB: 02/16/22 Reg No: 20574282

S S Niagara Z29	Marb:	+ 0.85
Sire: Tehama Patriarch F028	Ribeye:	+ 0.63
Tehama Elite Blackbird D826	\$B:	172
T/D Payweight 1682-7109	\$F:	111
Dam: Ms Pass Creek 7109 88 0005	\$W:	70
Ms Pass Creek 136 159 88	\$C:	293

CED	Actual	BW	Adj	WW	Milk	YW
Epd	BW	Epd	WW	Epd	Epd	Epd
+ 9	80	-0.2	664	+ 79	+ 28	+ 143

Certified Angus Beef

Ranks in the Top 15% in Yearling Weight(YW)



Reference Sires



T/D Nationwide 8150

Tattoo: 8150-BB18 Tag:

DOB: 02/20/18 Reg No: 19142103

Sire: B/R Nationwide 69
B/R Pride 1551
B/R Destination 727-928

Dam: B/R Ruby of Tiffany 2110
B/R Ruby of Tiffany 0177

Marb:	+ 1.11
Ribeye:	+ 0.49
\$B:	202
\$F:	130
\$W:	39
\$C	301

CED	Actual	BW	Adj	WW	Milk	YW
Epd	BW	Epd	WW	Epd	Epd	Epd
+ 3	89	+ 3.9	727	+ 77	+ 20	+ 144

** Certified Angus Beef**

Ranks in the Top 10% in Scrotal Circumference(SC)

Top 15% in Yearling Weight(YW), Carcass Weight(CW) & Marbling



Pass Creek 8150 688 1061

Tattoo: 1061-BB21 Tag: 688

DOB: 04/12/21 Reg No: 20232371

Sire: B/R Nationwide 69
T/D Nationwide 8150
B/R Ruby of Tiffany 2110
O A Upward 104

Dam: Ms Pass Creek 104 905 688
Ms Pass Creek 7711 702 905

Marb:	+ 0.98
Ribeye:	+ 0.58
\$B:	203
\$F:	136
\$W:	47
\$C	310

CED	Actual	BW	Adj	WW	Milk	YW
Epd	BW	Epd	WW	Epd	Epd	Epd
+ 8	85	+ 2.5	850	+ 80	+ 20	+ 141

*Certified Angus Beef**

Top 2% Carcass Weight(CW)

Top 15% in Wean Weight(WW) & Yearling Weight(YW)

Reference Sires



Herbster Doctor Black 2116

Tattoo: 2116-BB22 Tag:

DOB: 03/08/22 Reg No: 20458570

Sire: Casino Bomber N33	Marb:	+ 1.27
T/D Doc Ryan 049	Ribeye:	+ 0.58
T/D Ruby of Tiffany 824	\$B:	186
S A V Harvester 0338	\$F:	110
Dam: PVA Blackcap May 4197	\$W:	55
S A V May 2397	\$C:	296

CED	Actual	BW	Adj	WW	Milk	YW
Epd	BW	Epd	WW	Epd	Epd	Epd
+ 0	74	+ 3.4	863	+ 91	+ 24	+ 153

Certified Angus Beef

*Top 3% in WW *Top 5% in SC & CW *Top 10% in YW & Marbling * Top 20% in Docility



Pass Creek 6231 7099 9186

Tattoo: 9186-BB19 Tag: 7099

DOB: 02/17/19 Reg No: 19659453

Sire: Basin Payweight 1682	Marb:	+ 0.52
B/R Payweight 1682-6231	Ribeye:	+ 0.61
B/R Blackbird 4224	\$B:	148
Pass Creek 9108 275 4075	\$F:	101
Dam: Ms Pass Creek 4075 317 7099	\$W:	57
Ms Pass Creek 001 043 317	\$C:	249

CED	Actual	BW	Adj	WW	Milk	YW
Epd	BW	Epd	WW	Epd	Epd	Epd
+ 9	75	+ 2.2	786	+ 70	+ 24	+ 113

Top 10% in Scrotal Circumference(SC)



Pass Creek G445 733 2033

Tattoo: 2033-BB22 Tag: 733

DOB: 02/27/22 Reg No: 20572640

Sire: Casino Bomber N33	Marb:	+ 0.35
Vermilion Bomber G445	Ribeye:	+ 0.30
Vermilion Erica 6847	\$B:	133
Pass Creek 106 17 3038	\$F:	96
Dam: Ms Pass Creek 3038 064 733	\$W:	64
Miss Pass Creek 746 1175 064	\$C:	237

CED	Actual	BW	Adj	WW	Milk	YW
Epd	BW	Epd	WW	Epd	Epd	Epd
-5	88	+ 3.2	815	+ 76	+ 19	+ 118

Ranks in the top 10% in Carcass Fat

Reference Sires



Stevenson Ashland 20293

Tattoo: 20293 Tag:

DOB: 03/07/22 Reg No: 20367673

Sire: G A R Ashland
Stevenson Ashland 00670
Vermilion Violet 1073

Dam: Stevenson Statement 70750
Stevenson Trojan Erica 9155
Stevenson Trojan Erica 5326

Marb:	+ 0.90
Ribeye:	+ 0.60
\$B:	169
\$F:	100
\$W:	53
\$C:	272

CED	Actual	BW	ANAdj	WW	Milk	YW
Epd	BW	Epd	WW	Epd	Epd	Epd
+ 4	86	+ 3.4	585	+ 77	+ 26	+ 135

Certified Angus Beef

Ranks in the Top 2% in Carcass Fat



Stevenson Catalyst 20342

Tattoo: 20342 Tag:

DOB: 03/23/22 Reg No: 20367692

Sire: Plattermere Weigh Up K360
Stevenson Catalyst 60575
Stevenson Pride I167x

Dam: Stevenson Catalyst 60554
Stevenson Blackbird 8066
Stevenson Blackbird 6328

Marb:	+ 0.47
Ribeye:	+ 1.07
\$B:	126
\$F:	74
\$W:	56
\$C:	219

CED	Actual	BW	Adj	WW	Milk	YW
Epd	BW	Epd	WW	Epd	Epd	Epd
+ 1	76	+ 2.1	591	+ 66	+ 27	+ 106

Ranks in the Top 10% in Ribeye Area(RE) and Top 15% in Carcass Fat(FAT)



KB-HOME OF G35 H82

Tattoo: H82-BB20 Tag:

DOB: 12/26/20 Reg No: 20053096

Sire: G A R Ashland
G A R Home Town
Chair Rock Sure Fire 6095
KB-Full Measure C40

Dam: KB-Miss of E09 G35
KB-Miss E09

Marb:	
Ribeye:	
\$B:	
\$F:	
\$W:	
\$C:	

CED	Actual	BW	ANAdj	WW	Milk	YW
Epd	BW	Epd	WW	Epd	Epd	Epd
	76		902			

Certified Angus Beef*Top 4% in Carcass Weight(CW) *Top 5% in Yearling Weight(YW) & Milk *Top 10% in Calving Ease Direct(CED), Wean Weight(WW). Marbling, Ribeye Area(RE) & Carcass Fat

Reference Sires



Vermilion King Air K048

Tattoo: K048

Tag:

DOB: 02/06/22 Reg No: 20352463

LD Capitalist 316							Marb:	+ 1.05
Sire: Connealy King Air							Ribeye:	+ 0.48
Pasha of Conanga 557P							\$B:	203
KG Premium Asset 7161							\$F:	138
Dam: Vermilion Eldina 0173							\$W:	80
Vermilion Eldina 7571							\$C:	343
CED	Actual	BW	Adj	WW	Milk	YW		
Epd	BW	Epd	WW	Epd	Epd	Epd		
+ 6	82	+ 2.9	703	+ 90	+ 29	+ 160		

Certified Angus Beef

*Top 2% in Carcass Weight(CW) *Top 3% in Yearling Weight(YW) *Top 4% in Wean Weight(WW)



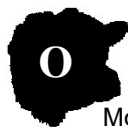
Pass Creek 6064 66 0083

Tattoo: 0083-BB20 Tag: 66

DOB: 03/21/20 Reg No: 19904957

B/R Warrior 461							Marb:	+ 0.70
Sire: Pass Creek 461 408 6064							Ribeye:	+ 0.55
Ms Pass Creek 0035 235 408							\$B:	168
BDAR Progress A039							\$F:	114
Dam: Ms Pass Creek A039 043 66							\$W:	37
Ms Pass Creek 8030 7037 043							\$C:	255
CED	Actual	BW	Adj	WW	Milk	YW		
Epd	BW	Epd	WW	Epd	Epd	Epd		
-5	80	+ 4.0	736	+ 66	+ 28	+ 123		

Certified Angus Beef



T/D No Doubt 1162

Tattoo: 1162-BB21 Tag:

DOB: 01/17/21 Reg No: 19999016

Mogck Bullseye							Marb:	+ 0.96
Sire: Hoover No Doubt							Ribeye:	+ 0.82
Miss Blackcap Ellston J2							\$B:	172
LD Emblazon 999							\$F:	103
Dam: T/D Royal Lass 7003							\$W:	67
SandPoint Royal Lass 5064							\$C:	290
CED	Actual	BW	Adj	WW	Milk	YW		
Epd	BW	Epd	WW	Epd	Epd	Epd		
+ 6	70	+ 2.3	628	+ 73	+ 16	+ 136		

Certified Angus Beef

Top 4% for Docility

Reference Sires



Pass Creek 7109 78 9156

Tattoo: 9156-BB19 Tag: 78

DOB: 03/15/19 Reg No: 19659429

Sire: Basin Payweight 1682
T/D Payweight 1682-7109
B/R Ruby of Tiffany 511

S A Arsenal 25
Dam: Ms Pass Creek 25 512 78

Ms Pass Creek 2008 055 512

Marb:	+ 0.82
Ribeye:	+ 0.60
\$B:	192
\$F:	132
\$W:	43
\$C	292

CED Epd	Actual BW	BW Epd	Adj WW	WW Epd	Milk Epd	YW Epd
+ 4	78	+ 2.4	839	+ 78	+ 28	+ 140

Certified Angus Beef

Ranked in the Top 15% in Carcass Weight(CW)-Top 20% in Wean Weight(WW) & Yearling Weight(YW)



Pass Creek 8150 974 2068

Tattoo: 2068-BB22 Tag: 974

DOB: 03/15/22 Reg No: 20572653

Sire: B/R Nationwide 69
T/D Nationwide 8150
B/R Ruby of Tiffany 2110

S A Arsenal 25
Dam: Ms Pass Creek 25 661 974

Ms Pass Creek 461 459 661

Marb:	+ 1.09
Ribeye:	+ 0.32
\$B:	173
\$F:	107
\$W:	39
\$C	263

CED Epd	Actual BW	BW Epd	Adj WW	WW Epd	Milk Epd	YW Epd
+ 10	75	+ 1.2	717	+ 64	+ 32	+ 122

Certified Angus Beef

Ranks in the Top 15% for Milk and Marbling



Angus Offers the Best Combination of Growth and Calving Ease

Average EPDs, 2014 Birth Year, Angus Base

Breed	BW EPD	WW EPD	YW EPD	Milk
Angus	1.3	51	91	23
Hereford	5.6	40	49	3
Red Angus	1.2	26	53	23
Charolais	8.5	62	89	17
Gelbvieh	3.3	43	68	29
Limousin	3.6	45	51	13
Simmental	5.1	54	81	26

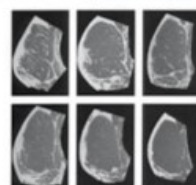
ANGUS
THE BUSINESS BREED

Kuehn and Thallman, 2016

Angus is Highest for Marbling and Carcass Weight

Average EPDs, 2014 Birth Year, Angus Base

Breed	Marbling EPD	Carcass Weight EPD
Angus	0.59	33
Hereford	-0.22	2
Red Angus	0.18	11
Charolais	-0.29	30
Gelbvieh	-0.18	28
Limousin	-0.44	15
Simmental	-0.20	32



ANGUS
THE BUSINESS BREED

Kuehn and Thallman, 2016

Fall Bulls

30

Pass Creek 9156 0204 3266

Tattoo: 3266-BF23 Tag: 0204

DOB: 09/10/23 Reg No: 21015497

T/D Payweight 1682-7109
Sire: Pass Creek 7109 78 9156
 Ms Pass Creek 25 512 78
 Pass Creek A187 445 6079
Dam: Ms Pass Creek 6079 3102 0204
 Pass Creek Romeo 5088 3102

Marb:	+ 0.50
Ribeye:	+ 0.65
\$B:	126
\$F:	79
\$W:	53
\$C	216

CED	Actual	BW	Adj	WW	Milk	YW	Adj
Epd	BW	Epd	WW	Epd	Epd	Epd	YW
+ 9	74	+ 0.8	608	+ 54	+ 32	+ 104	1,195

Top 15% Milk

31

Pass Creek 9156 0200 3265

Tattoo: 3265-BF23 Tag: 0200

DOB: 09/01/23 Reg No: 21015496

T/D Payweight 1682-7109
Sire: Pass Creek 7109 78 9156
 Ms Pass Creek 25 512 78
 B/R Payweight 1682-6231
Dam: Ms Pass Creek 6231 3097 0200
 Pass Creek NF 1358 3097

Marb:	+ 0.78
Ribeye:	+ 0.76
\$B:	165
\$F:	104
\$W:	50
\$C	264

CED	Actual	BW	Adj	WW	Milk	YW	Adj
Epd	BW	Epd	WW	Epd	Epd	Epd	YW
-1	85	+ 3.9	704	+ 84	+ 20	+ 140	1,090

Certified Angus Beef

Top 10% WW

32

Pass Creek 8150 8271 3247

Tattoo: 3247-BF23 Tag: 8271

DOB: 08/31/23 Reg No: 21015489

B/R Nationwide 69
Sire: T/D Nationwide 8150
 B/R Ruby of Tiffany 2110
 Vermilion Spur D177
Dam: Ms Pass Creek D177 5223 8271
 Ms Pass Creek 001 4062 5223

Marb:	+ 0.88
Ribeye:	+ 0.27
\$B:	150
\$F:	91
\$W:	38
\$C	233

CED	Actual	BW	Adj	WW	Milk	YW	Adj
Epd	BW	Epd	WW	Epd	Epd	Epd	YW
+ 2	85	+ 3.2	754	+ 66	+ 29	+ 120	1,328

Certified Angus Beef

33

Pass Creek 9186 7220 3233

Tattoo: 3233-BF23 Tag: 7220

DOB: 09/22/23 Reg No: 21015485

B/R Payweight 1682-6231
Sire: Pass Creek 6231 7099 9186
 Ms Pass Creek 4075 317 7099
 S A Arsenal 25
Dam: Ms Pass Creek 25 3107 7220
 Ms Pass Creek 001 6264 3107

Marb:	+ 0.67
Ribeye:	+ 0.29
\$B:	132
\$F:	85
\$W:	43
\$C	214

CED	Actual	BW	Adj	WW	Milk	YW	Adj
Epd	BW	Epd	WW	Epd	Epd	Epd	YW
+ 10	78	-0.2	670	+ 54	+ 25	+ 92	1,168

Fall Bulls

34

Pass Creek 1061 2097 3214

Tattoo: 3214-BF23 Tag: 2097

DOB: 09/27/23 Reg No: 21015478

T/D Nationwide 8150
Sire: Pass Creek 8150 688 1061
 Ms Pass Creek 104 905 688
 HA Program 5652
Dam: Ms Pass Creek 5652 0210 2097
 Ms Pass Creek 2209 8019 0210

Marb:	+ 1.00
Ribeye:	+ 0.65
\$B:	178
\$F:	107
\$W:	52
\$C:	283

CED	Actual	BW	Adj	WW	Milk	YW	Adj
Epd	BW	Epd	WW	Epd	Epd	Epd	YW
+ 3	78	+ 2.1	693	+ 78	+ 18	+ 127	1,143

Certified Angus Beef

35

Pass Creek 8150 8255 3246

Tattoo: 3246-BF23 Tag: 8255

DOB: 08/29/23 Reg No: 21015488

B/R Nationwide 69
Sire: T/D Nationwide 8150
 B/R Ruby of Tiffany 2110
 S A Shaman 136
Dam: Ms Pass Creek 136 49 8255
 Ms Pass Creek 13 079 49

Marb:	+ 0.69
Ribeye:	+ 0.49
\$B:	158
\$F:	106
\$W:	15
\$C:	220

CED	Actual	BW	Adj	WW	Milk	YW	Adj
Epd	BW	Epd	WW	Epd	Epd	Epd	YW
-2	78	+ 3.6	644	+ 67	+ 14	+ 120	1,106

36

Pass Creek 1061 3096 3216

Tattoo: 3216-BF23 Tag: 3096

DOB: 09/09/23 Reg No: 21015479

T/D Nationwide 8150
Sire: Pass Creek 8150 688 1061
 Ms Pass Creek 104 905 688
 Bovagene Exceller 001
Dam: Pass Creek Be 885 3096
 Ms Pass Creek 409 2013 885

Marb:	+ 0.60
Ribeye:	+ 0.64
\$B:	152
\$F:	101
\$W:	43
\$C:	240

CED	Actual	BW	Adj	WW	Milk	YW	Adj
Epd	BW	Epd	WW	Epd	Epd	Epd	YW
+ 4	85	+ 3.2	715	+ 74	+ 17	+ 122	1,160

37

Pass Creek 0083 4164 3218

Tattoo: 3218-BF23 Tag: 4164

DOB: 09/10/23 Reg No: 21015480

Pass Creek 461 408 6064
Sire: Pass Creek 6064 66 0083
 Ms Pass Creek A039 043 66
 S A Romeo 1421
Dam: Ms Pass Creek 1421 885 4164
 Ms Pass Creek 409 2013 885

Marb:	+ 0.54
Ribeye:	+ 0.22
\$B:	130
\$F:	90
\$W:	34
\$C:	203

CED	Actual	BW	Adj	WW	Milk	YW	Adj
Epd	BW	Epd	WW	Epd	Epd	Epd	YW
-1	76	+ 3.1	630	+ 61	+ 23	+ 116	1,204

Fall Bulls

38

Pass Creek 1061 469 3219

Tattoo: 3219-BF23 Tag: 469

DOB: 09/11/23 Reg No: 21015481

Sire: T/D Nationwide 8150
Pass Creek 8150 688 1061
Ms Pass Creek 104 905 688

Dam: Ms Pass Creek T510 933 1115
Ms Pass Creek 1115 849 469
Ms Pass Creek 610 516 849

Marb:	+ 0.47
Ribeye:	+ 0.09
\$B:	126
\$F:	90
\$W:	45
\$C	208

CED	Actual	BW	Adj	WW	Milk	YW	Adj
Epd	BW	Epd	WW	Epd	Epd	Epd	YW
+ 15	74	-1.6	636	+ 40	+ 29	+ 82	1,057

Top 3% CED
Top 10% BW & SC

39

Pass Creek 8150 9228 3253

Tattoo: 3253-BF23 Tag: 9228

DOB: 08/29/23 Reg No: 21015492

Sire: B/R Nationwide 69
T/D Nationwide 8150
B/R Ruby of Tiffany 2110

Dam: Vermilion Spur D177
Ms Pass Creek D177 3107 9228
Ms Pass Creek 001 6264 3107

Marb:	+ 0.62
Ribeye:	+ 0.29
\$B:	149
\$F:	100
\$W:	38
\$C	231

CED	Actual	BW	Adj	WW	Milk	YW	Adj
Epd	BW	Epd	WW	Epd	Epd	Epd	YW
+ 11	70	+ 0.8	764	+ 59	+ 15	+ 110	1,191

Top 15% CED

40

Pass Creek 0083 9310 3262

Tattoo: 3262-BF23 Tag: 9310

DOB: 09/11/23 Reg No: 21015494

Sire: Pass Creek 461 408 6064
Pass Creek 6064 66 0083
Ms Pass Creek A039 043 66

Dam: B/R Payweight 1682-6231
Ms Pass Creek 6231 7290 9310
Ms Pass Creek 4886 5127 7290

Marb:	+ 0.76
Ribeye:	+ 0.79
\$B:	154
\$F:	96
\$W:	63
\$C	263

CED	Actual	BW	Adj	WW	Milk	YW	Adj
Epd	BW	Epd	WW	Epd	Epd	Epd	YW
+ 6	78	+ 2.2	674	+ 69	+ 28	+ 117	1,160

Certified Angus Beef

41

Pass Creek 9186 9311 3263

Tattoo: 3263-BF23 Tag: 9311

DOB: 09/11/23 Reg No: 21015495

Sire: B/R Payweight 1682-6231
Pass Creek 6231 7099 9186
Ms Pass Creek 4075 317 7099

Dam: Vermilion Spur D177
Ms Pass Creek D177 8004 9311
Ms Pass Creek 409 519 8004

Marb:	+ 0.62
Ribeye:	+ 0.39
\$B:	147
\$F:	98
\$W:	33
\$C	224

CED	Actual	BW	Adj	WW	Milk	YW	Adj
Epd	BW	Epd	WW	Epd	Epd	Epd	YW
+ 7	76	+ 2.1	670	+ 67	+ 26	+ 121	1,262

Fall Bulls

42

Pass Creek 9186 9213 3251

Tattoo: 3251-BF23 Tag: 9213

DOB: 09/10/23 Reg No: 21015491

Sire: B/R Payweight 1682-6231
Pass Creek 6231 7099 9186
Ms Pass Creek 4075 317 7099

Dam: Pass Creek A187 445 6079
Ms Pass Creek 6079 2115 9213
Ms Pass Creek 9002 975 2115

Marb:	+ 0.46
Ribeye:	+ 0.43
\$B:	122
\$F:	78
\$W:	55
\$C:	213

CED	Actual	BW	Adj	WW	Milk	YW	Adj
Epd	BW	Epd	WW	Epd	Epd	Epd	YW
+ 12	86	-0.4	669	+ 46	+ 28	+ 80	1,059

Top 10% CED

43

Pass Creek 1061 7186 3279

Tattoo: 3279-BF24 Tag: 7186

DOB: 09/12/23 Reg No: 21015484

Sire: T/D Nationwide 8150
Pass Creek 8150 688 1061
Ms Pass Creek 104 905 688

Dam: S A Arsenal 25
Ms Pass Creek 25 0214 7186
Ms Pass Creek 3373 8111 0214

Marb:	+ 1.02
Ribeye:	+ 0.30
\$B:	168
\$F:	102
\$W:	39
\$C:	257

CED	Actual	BW	Adj	WW	Milk	YW	Adj
Epd	BW	Epd	WW	Epd	Epd	Epd	YW
+ 7	80	+ 2.3	748	+ 70	+ 13	+ 124	1,620

Certified Angus Beef

44

Pass Creek 8150 9246 3257

Tattoo: 3257-BF23 Tag: 9246

DOB: 09/07/23 Reg No: 21015493

Sire: B/R Nationwide 69
T/D Nationwide 8150
B/R Ruby of Tiffany 2110

Dam: Vermilion Spur D177
Ms Pass Creek D177 444 9246
Ms Pass Creek 9108 858 444

Marb:	+ 0.88
Ribeye:	+ 0.14
\$B:	149
\$F:	90
\$W:	20
\$C:	213

CED	Actual	BW	Adj	WW	Milk	YW	Adj
Epd	BW	Epd	WW	Epd	Epd	Epd	YW
+ 1	88	+ 3.7	696	+ 66	+ 16	+ 115	1,075

Certified Angus Beef

Top 10% SC

45

Pass Creek 1162 1216 3212

Tattoo: 3212-BF23 Tag: 1216

DOB: 09/09/23 Reg No: 21015477

Sire: Hoover No Doubt
T/D No Doubt 1162
T/D Royal Lass 7003

Dam: Basin Payweight 1682
Ms Pass Creek 1682 9205 1216
Ms Pass Creek 6079 0220 9205

Marb:	+ 0.78
Ribeye:	+ 0.57
\$B:	134
\$F:	78
\$W:	73
\$C:	247

CED	Actual	BW	Adj	WW	Milk	YW	Adj
Epd	BW	Epd	WW	Epd	Epd	Epd	YW
+ 10	76	+ 0.9	629	+ 64	+ 19	+ 103	1,162

Certified Angus Beef

Fall Bulls

46

Pass Creek 1162 1172 3203

Tattoo: 3203-BF23 Tag: 1172

DOB: 09/07/23 Reg No: 21015475

Sire: T/D No Doubt 1162

T/D Royal Lass 7003

Pass Creek 461 408 6064

Dam: Ms Pass Creek 6064 5174 1172

Ms Pass Creek 2488 2114 5174

Marb:	+ 0.95
Ribeye:	+ 0.93
\$B:	161
\$F:	91
\$W:	74
\$C	283

CED	Actual	BW	Adj	WW	Milk	YW	Adj
Epd	BW	Epd	WW	Epd	Epd	Epd	YW
+ 10	76	+ 1.1	608	+ 53	+ 28	+ 99	1,182

Certified Angus Beef

Top 15% for Docility

47

Pass Creek 9186 5217 3223

Tattoo: 3223-BF23 Tag: 5217

DOB: 09/26/23 Reg No: 21015482

Sire: Pass Creek 6231 7099 9186

Ms Pass Creek 4075 317 7099

BDAR Progress A039

Dam: Ms Pass Creek A039 3117 5217

Pass Creek Romeo 7202 3117

Marb:	+ 0.30
Ribeye:	+ 0.69
\$B:	130
\$F:	92
\$W:	54
\$C	223

CED	Actual	BW	Adj	WW	Milk	YW	Adj
Epd	BW	Epd	WW	Epd	Epd	Epd	YW
+ 10	82	+ 1.5	599	+ 46	+ 31	+ 88	1,130

48

Pass Creek 1061 5250 3225

Tattoo: 3225-BF23 Tag: 5250

DOB: 10/09/23 Reg No: 21015483

Sire: Pass Creek 8150 688 1061

Ms Pass Creek 104 905 688

Bovagene Exceller 001

Dam: Ms Pass Creek 001 982 5250

Ms Pass Creek 777 2021 982

Marb:	+ 0.75
Ribeye:	+ 0.67
\$B:	170
\$F:	110
\$W:	38
\$C	258

CED	Actual	BW	Adj	WW	Milk	YW	Adj
Epd	BW	Epd	WW	Epd	Epd	Epd	YW
+ 3	88	+ 4.5	571	+ 66	+ 28	+ 114	1,035

Certified Angus Beef

49

Pass Creek 9186 7245 3234

Tattoo: 3234-BF23 Tag: 7245

DOB: 09/23/23 Reg No: 21015486

Sire: Pass Creek 6231 7099 9186

Ms Pass Creek 4075 317 7099

Basin Payweight 107S

Dam: Ms Pass Creek 107S 441 7245

Ms Pass Creek 001 207 441

Marb:	+ 0.66
Ribeye:	+ 0.41
\$B:	132
\$F:	82
\$W:	50
\$C	221

CED	Actual	BW	Adj	WW	Milk	YW	Adj
Epd	BW	Epd	WW	Epd	Epd	Epd	YW
+ 7	75	+ 2.4	601	+ 61	+ 23	+ 108	1,123

Top 5% SC

Fall Bulls

50

Pass Creek 1162 1200 3208

Tattoo: 3208-BF23 Tag: 1200

DOB: 09/17/23 Reg No: 21015476

Sire: Hoover No Doubt
T/D No Doubt 1162
T/D Royal Lass 7003

Dam: Ms Pass Creek 709 9209 1200
Mr JT Enhance 709
Ms Pass Creek D177 2097 9209

Marb:	+ 0.89
Ribeye:	+ 0.98
\$B:	175
\$F:	106
\$W:	74
\$C:	301

CED	Actual	BW	Adj	WW	Milk	YW	Adj
Epd	BW	Epd	WW	Epd	Epd	Epd	YW
+ 2	75	+ 1.6	681	+ 75	+ 28	+ 141	1,179

Certified Angus Beef

51

Pass Creek 9186 9210 3250

Tattoo: 3250-BF23 Tag: 9210

DOB: 09/26/23 Reg No: 21015490

Sire: B/R Payweight 1682-6231
Pass Creek 6231 7099 9186
Ms Pass Creek 4075 317 7099

Dam: Vermilion Spur D177
Ms Pass Creek D177 2102 9210
Ms Pass Creek 5652 996 2102

Marb:	+ 0.61
Ribeye:	+ 0.52
\$B:	127
\$F:	77
\$W:	79
\$C:	244

CED	Actual	BW	Adj	WW	Milk	YW	Adj
Epd	BW	Epd	WW	Epd	Epd	Epd	YW
+ 8	74	+ 0.9	600	+ 61	+ 19	+ 99	1,077

52

Pass Creek 0083 8246 3282

Tattoo: 3282-BF24 Tag: 8246

DOB: 09/01/23 Reg No: 21015487

Sire: Pass Creek 461 408 6064
Pass Creek 6064 66 0083
Ms Pass Creek A039 043 66

Dam: S A Arsenal 25
Ms Pass Creek 25 421 8246
Ms Pass Creek 1115 068 421

Marb:	+ 0.58
Ribeye:	+ 0.53
\$B:	133
\$F:	86
\$W:	35
\$C:	208

CED	Actual	BW	Adj	WW	Milk	YW	Adj
Epd	BW	Epd	WW	Epd	Epd	Epd	YW
+ 2	78	+ 2.8	617	+ 52	+ 28	+ 107	1,540

53

PASS CREEK 1061 8229 3241

Tattoo: 3241-BF23 Tag: 8229

DOB: 09/08/23 Reg No: 627440903

Sire: T/D Nationwide 8150
Pass Creek 8150 688 1061
Ms Pass Creek 104 905 688

Dam: Pass Creek A187 43 6078
Ms Pass Creek 6078 3105 8229

Marb:	
Ribeye:	
\$B:	
\$F:	
\$W:	
\$C:	

CED	Actual	BW	Adj	WW	Milk	YW	Adj
Epd	BW	Epd	WW	Epd	Epd	Epd	YW
	85		728				1,190

PUREBRED

Fall Bulls



Tattoo: 3261-BF23 Tag: 9302
DOB: 09/01/23 Reg No: 627440923

Sire:

B/R Payweight 1682-6231
Dam: Ms Pass Creek 6231 7263 9302
 Ms Pass Creek 4886 5153 7263

Marb:	
Ribeye:	
\$B:	
\$F:	
\$W:	
\$C	

CED	Actual	BW	Adj	WW	Milk	YW	Adj
Epd	BW	Epd	WW	Epd	Epd	Epd	YW
	80		641				1,340

Purebred



Tattoo: 3281-B23 Tag:
DOB: 08/20/23 Reg No:

Sire:

Dam:

Marb:	
Ribeye:	
\$B:	
\$F:	
\$W:	
\$C	

CED	Actual	BW	Adj	WW	Milk	YW	Adj
Epd	BW	Epd	WW	Epd	Epd	Epd	YW
	85						1,225

Purebred



2 Year Old Bulls

58

Pass Creek D177 649 3121

Tattoo: 3121-B23 Tag: 649

DOB: 04/08/23 Reg No: 20900605

Sire: Connealy Spur
Vermilion Spur D177
Vermilion Lass 3494
B/R Warrior 461

Dam: Ms Pass Creek 461 426 649
Ms Pass Creek 13 062 426

Marb:	+ 0.92
Ribeye:	+ 0.10
\$B:	137
\$F:	80
\$W:	48
\$C:	226

CED	Actual	BW	Adj	WW	Milk	YW	Adj
Epd	BW	Epd	WW	Epd	Epd	Epd	YW
+ 1	78	+ 2.6	654	+ 60	+ 25	+ 103	

Certified Angus Beef

59

Pass Creek 0103 674 3003

Tattoo: 3003-B23 Tag: 674

DOB: 04/01/23 Reg No: 20844470

Sire: Mr JT Enhance 709
Pass Creek 709 717 0103
Ms Pass Creek 461 589 717
B/R Warrior 461

Dam: Ms Pass Creek 461 47 674
Ms Pass Creek X25 197 47

Marb:	+ 0.47
Ribeye:	+ 0.33
\$B:	105
\$F:	65
\$W:	35
\$C:	171

CED	Actual	BW	Adj	WW	Milk	YW	Adj
Epd	BW	Epd	WW	Epd	Epd	Epd	YW
+ 7	82	-0.2	560	+ 43	+ 23	+ 93	870

60

Pass Creek D177 926 3105

Tattoo: 3105-B23 Tag: 926

DOB: 04/06/23 Reg No: 20858369

Sire: Connealy Spur
Vermilion Spur D177
Vermilion Lass 3494
B/R New Design 8212-53

Dam: Ms Pass Creek 53 6108 926
Miss Pass Creek 409 301 6108

Marb:	+ 0.57
Ribeye:	+ 0.23
\$B:	123
\$F:	82
\$W:	43
\$C:	203

CED	Actual	BW	Adj	WW	Milk	YW	Adj
Epd	BW	Epd	WW	Epd	Epd	Epd	YW
-2	78	+ 2.6	660	+ 48	+ 31	+ 86	969

61

PASS CREEK 8150 741 3065

Tattoo: 3065-B23 Tag: 741

DOB: 03/16/23 Reg No: 627420459

Sire: B/R Nationwide 69
T/D Nationwide 8150
B/R Ruby of Tiffany 2110
O A Upward 104

Dam: Ms Pass Creek 104 144 741
Ms Pass Creek 0415 954 144

Marb:	
Ribeye:	
\$B:	
\$F:	
\$W:	
\$C:	

CED	Actual	BW	Adj	WW	Milk	YW	Adj
Epd	BW	Epd	WW	Epd	Epd	Epd	YW
	79		626				832

2 Year Old Bulls



PASS CREEK 0100 7005KC 3064
Tattoo: 3064-BG23 Tag: 7005
DOB: 04/17/23 Reg No:

Sire: Mr JT Enhance 709
 Pass Creek 709 709 0100
 Ms Pass Creek 461 559 709
 Pass Creek 172 080 4045
Dam: Ms Pass Creek 4045 306 7005
 SILCOX ANGUS 7528 82 306

Marb:	
Ribeye:	
\$B:	
\$F:	
\$W:	
\$C	

CED	Actual	BW	Adj	WW	Milk	YW	Adj
Epd	BW	Epd	WW	Epd	Epd	Epd	YW
	80						

PUREBRED



PASS CREEK D177 802 3130
Tattoo: 3130-BG23 Tag: 802
DOB: 04/10/23 Reg No: 627501068

Sire: Connealy Spur
 Vermilion Spur D177
 Vermilion Lass 3494
 S A Arsenal 25
Dam: Ms Pass Creek 25 230 802
 Ms Pass Creek 1027 0140 230

Marb:	
Ribeye:	
\$B:	
\$F:	
\$W:	
\$C	

CED	Actual	BW	Adj	WW	Milk	YW	Adj
Epd	BW	Epd	WW	Epd	Epd	Epd	YW
	80		707				1,121

PUREBRED



PASS CREEK H82 132 375
Tattoo: 375-B23 Tag: 132
DOB: 03/07/23 Reg No: 627304548

Sire: G A R Home Town
 KB-Home Town of G35 H82
 KB-Miss of E09 G35
 Mr JT Enhance 709
Dam: Ms Pass Creek 709 707 132
 Ms Pass Creek 461 540 707

Marb:	
Ribeye:	
\$B:	
\$F:	
\$W:	
\$C	

CED	Actual	BW	Adj	WW	Milk	YW	Adj
Epd	BW	Epd	WW	Epd	Epd	Epd	YW
	78						

Registerable

Spring Bulls

76

Pass Creek K048 1 4194

Tattoo: 4194-B24 Tag: 1

DOB: 03/25/24 Reg No: 21163824

Connealy King Air		Marb:	+ 0.68
Sire: Vermilion King Air K048	Vermilion Eldina 0173	Ribeye:	+ 0.29
		\$B:	134
	Pass Creek 136 241 8023	\$F:	86
Dam: Ms	Pass Creek 8023 031 1	\$W:	74
	Miss Pass Creek 53 3068 031	\$C	248

CED	Actual	BW	Adj	WW	Milk	YW	Adj
Epd	BW	Epd	WW	Epd	Epd	Epd	YW
+ 7	79	+ 0.5	813	+ 60	+ 33	+ 102	1,229

Top 10% in Milk

78

Pass Creek 0048 824 4115

Tattoo: 4115-B24 Tag: 824

DOB: 03/24/24 Reg No: 21163803

T/D Payweight 1682-7109		Marb:	+ 0.69
Sire: Pass Creek 7109 5006 0048	Ms Pass Creek 1027 394 5006	Ribeye:	-0.12
		\$B:	112
	Pass Creek 1158 6116 4048	\$F:	67
Dam: Ms	Pass Creek 4048 478 824	\$W:	55
	Ms Pass Creek 001 102 478	\$C	200

CED	Actual	BW	Adj	WW	Milk	YW	Adj
Epd	BW	Epd	WW	Epd	Epd	Epd	YW
+ 5	78	+ 0.3	741	+ 51	+ 35	+ 92	1,079

Top 10% in Milk

79

Pass Creek 868F 8060 4123

Tattoo: 4123-B24 Tag: 8060

DOB: 03/11/24 Reg No: 21167346

LD Capitalist 316		Marb:	+ 0.63
Sire: Connealy King Air	Pasha of Conanga 557P	Ribeye:	+ 0.46
		\$B:	145
	Vermilion Spur D177	\$F:	95
Dam: Ms	Pass Creek D177 541 8060	\$W:	66
	Ms Pass Creek 001 172 541	\$C	254

CED	Actual	BW	Adj	WW	Milk	YW	Adj
Epd	BW	Epd	WW	Epd	Epd	Epd	YW
+ 5	92	+ 2.7	770	+ 69	+ 27	+ 125	1,224



Spring Bulls

80

Pass Creek 8150 113 4068

Tattoo: 4068-B24 Tag: 113

DOB: 03/14/24 Reg No: 21163778

Sire: T/D Nationwide 69	Marb:	+ 1.04
B/R Nationwide 8150	Ribeye:	+ 0.30
B/R Ruby of Tiffany 2110	\$B:	143
Pass Creek 136 241 8023	\$F:	78
Dam: Ms Pass Creek 8023 513 113	\$W:	36
Ms Pass Creek 1158 057 513	\$C:	221

CED	Actual	BW	Adj	WW	Milk	YW	Adj
Epd	BW	Epd	WW	Epd	Epd	Epd	YW
+ 4	82	+ 2.8	747	+ 60	+ 30	+ 105	1,120

Certified Angus Beef

81

Pass Creek 9156 946 4133

Tattoo: 4133-B24 Tag: 946

DOB: 03/10/24 Reg No: 21163809

Sire: T/D Payweight 1682-7109	Marb:	+ 0.84
Pass Creek 7109 78 9156	Ribeye:	+ 0.50
Ms Pass Creek 25 512 78	\$B:	173
O A Upward 104	\$F:	112
Dam: Ms Pass Creek 104 526 946	\$W:	52
Ms Pass Creek 001 1030 526	\$C:	276

CED	Actual	BW	Adj	WW	Milk	YW	Adj
Epd	BW	Epd	WW	Epd	Epd	Epd	YW
+ 7	86	+ 1.9	772	+ 73	+ 29	+ 132	1,058

Certified Angus Beef

82

Pass Creek 8150 190 4080

Tattoo: 4080-B24 Tag: 190

DOB: 03/26/24 Reg No: 21163782

Sire: T/D Nationwide 69	Marb:	+ 0.65
B/R Nationwide 8150	Ribeye:	+ 0.96
B/R Ruby of Tiffany 2110	\$B:	176
Gray's Black Granite 1245	\$F:	118
Dam: Ms Pass Creek 1245 300 190	\$W:	33
Ms Pass Creek 9027 85 300	\$C:	261

CED	Actual	BW	Adj	WW	Milk	YW	Adj
Epd	BW	Epd	WW	Epd	Epd	Epd	YW
+ 9	80	+ 2.2	760	+ 80	+ 27	+ 141	1,214

Certified Angus Beef

83

Pass Creek 0048 512 4089

Tattoo: 4089-B24 Tag: 512

DOB: 03/24/24 Reg No: 21163785

Sire: T/D Payweight 1682-7109	Marb:	+ 0.66
Pass Creek 7109 5006 0048	Ribeye:	-0.04
Ms Pass Creek 1027 394 5006	\$B:	130
Pass Creek 560 082 2008	\$F:	86
Dam: Ms Pass Creek 2008 055 512	\$W:	10
Miss Pass Creek 53 9025 055	\$C:	179

CED	Actual	BW	Adj	WW	Milk	YW	Adj
Epd	BW	Epd	WW	Epd	Epd	Epd	YW
-7	90	+ 4.3	803	+ 69	+ 29	+ 126	1,133

Spring Bulls

84

Pass Creek 0048 7000 4111

Tattoo: 4111-B24 Tag: 7000

DOB: 03/12/24 Reg No: 21163801

T/D Payweight 1682-7109
Sire: Pass Creek 7109 5006 0048
 Ms Pass Creek 1027 394 5006
 Pass Creek 9108 275 4075
Dam: Ms Pass Creek 4075 943 7000
 Miss Pass Creek 505 127 943

Marb:	+ 0.62
Ribeye:	+ 0.15
\$B:	160
\$F:	118
\$W:	52
\$C:	260

CED	Actual	BW	Adj	WW	Milk	YW	Adj
Epd	BW	Epd	WW	Epd	Epd	Epd	YW
+ 4	80	+ 1.5	700	+ 51	+ 29	+ 92	1,116

85

Pass Creek 0048 957 4160

Tattoo: 4160-B24 Tag: 957

DOB: 03/25/24 Reg No: 21163823

T/D Payweight 1682-7109
Sire: Pass Creek 7109 5006 0048
 Ms Pass Creek 1027 394 5006
 Vermilion Spur D177
Dam: Ms Pass Creek D177 569 957
 Ms Pass Creek 1158 902 569

Marb:	+ 0.08
Ribeye:	+ 0.30
\$B:	124
\$F:	103
\$W:	29
\$C:	190

CED	Actual	BW	Adj	WW	Milk	YW	Adj
Epd	BW	Epd	WW	Epd	Epd	Epd	YW
+ 3	80	+ 3.4	651	+ 69	+ 31	+ 130	1,137

Top 2% SC

86

Pass Creek 2097 209 4037

Tattoo: 4037-B24 Tag: 209

DOB: 03/24/24 Reg No: 21163765

Tehama Patriarch F028
Sire: Pass Creek F028 0005 2097
 Ms Pass Creek 7109 88 0005
 Vermilion Spur D177
Dam: Ms Pass Creek D177 616 209
 Ms Pass Creek 1421 169 616

Marb:	+ 0.67
Ribeye:	+ 0.43
\$B:	145
\$F:	97
\$W:	62
\$C:	250

CED	Actual	BW	Adj	WW	Milk	YW	Adj
Epd	BW	Epd	WW	Epd	Epd	Epd	YW
+ 3	82	+ 3.3	756	+ 87	+ 23	+ 145	1,183

Top 1% in Scrotal Circumference(SC)

Top 10% in Wean weigh(WW) & Docility (DOC)

Top 15% in Yearling Weight(YW)

87

Pass Creek 2097 233 4045

Tattoo: 4045-B24 Tag: 233

DOB: 04/05/24 Reg No: 21163768

Tehama Patriarch F028
Sire: Pass Creek F028 0005 2097
 Ms Pass Creek 7109 88 0005
 Vermilion Bomber G445
Dam: Ms Pass Creek G445 824 233
 Ms Pass Creek 4048 478 824

Marb:	+ 0.99
Ribeye:	+ 0.49
\$B:	159
\$F:	95
\$W:	70
\$C:	276

CED	Actual	BW	Adj	WW	Milk	YW	Adj
Epd	BW	Epd	WW	Epd	Epd	Epd	YW
+ 10	74	-1.3	730	+ 66	+ 29	+ 123	1,173

Certified Angus Beef

Top 10% in Birth Weight(BW)

Spring Bulls

88

Pass Creek 0048 0001 4152

Tattoo: 4152-B24 Tag: 0001

DOB: 03/31/24 Reg No: 21163821

T/D Payweight 1682-7109
Sire: Pass Creek 7109 5006 0048
 Ms Pass Creek 1027 394 5006
 Mr JT Enhance 811
Dam: Ms Pass Creek 811 860 0001
 Ms Pass Creek 854 640 860

Marb:	+ 0.90
Ribeye:	+ 0.28
\$B:	165
\$F:	106
\$W:	38
\$C:	252

CED	Actual	BW	Adj	WW	Milk	YW	Adj
Epd	BW	Epd	WW	Epd	Epd	Epd	YW
+ 4	80	+ 0.8	634	+ 60	+ 31	+ 114	1,077

Certified Angus Beef

Top 15% in Milk

89

Pass Creek 2116 084 4149

Tattoo: 4149-B24 Tag: 084

DOB: 03/15/24 Reg No: 21163818

T/D Doc Ryan 049
Sire: Herbster Doctor Black 2116
 PVA Blackcap May 4197
 S A Arsenal 25
Dam: Ms Pass Creek 25 569 084
 Ms Pass Creek 1158 902 569

Marb:	+ 1.18
Ribeye:	+ 0.52
\$B:	193
\$F:	121
\$W:	44
\$C:	294

CED	Actual	BW	Adj	WW	Milk	YW	Adj
Epd	BW	Epd	WW	Epd	Epd	Epd	YW
+ 0	80	+ 3.2	727	+ 77	+ 25	+ 134	1,165

Certified Angus Beef

Top 15% in Carcass Weight(CW) & Marbling(Marb)

90

Pass Creek 2116 08 4136

Tattoo: 4136-B24 Tag: 08

DOB: 03/23/24 Reg No: 21163811

T/D Doc Ryan 049
Sire: Herbster Doctor Black 2116
 PVA Blackcap May 4197
 S A Arsenal 25
Dam: Ms Pass Creek 25 168 08
 Ms Pass Creek 5049 722 168

Marb:	+ 0.73
Ribeye:	+ 0.74
\$B:	160
\$F:	102
\$W:	59
\$C:	267

CED	Actual	BW	Adj	WW	Milk	YW	Adj
Epd	BW	Epd	WW	Epd	Epd	Epd	YW
+ 1	80	+ 1.7	666	+ 66	+ 34	+ 127	1,066

Certified Angus Beef

Ranked in the Top 5% for Docility and Top 10% in Scrotal Circumference (SC) & Milk

91

Pass Creek 049 247 4050

Tattoo: 4050-B24 Tag: 247

DOB: 03/10/24 Reg No: 21167234

Casino Bomber N33
Sire: T/D Doc Ryan 049
 T/D Ruby of Tiffany 824
 T/D Nationwide 8150
Dam: Ms Pass Creek 8150 920 247
 Ms Pass Creek 104 306 920

Marb:	+ 0.98
Ribeye:	+ 0.54
\$B:	173
\$F:	111
\$W:	47
\$C:	271

CED	Actual	BW	Adj	WW	Milk	YW	Adj
Epd	BW	Epd	WW	Epd	Epd	Epd	YW
+ 6	77	+ 2.1	712	+ 73	+ 28	+ 130	1,058

Certified Angus Beef

Spring Bulls

92

Pass Creek 049 2006 4058

Tattoo: 4058-B24 Tag: 2006

DOB: 03/11/24 Reg No: 21167267

Sire: Casino Bomber N33	Marb:	+ 0.98
T/D Doc Ryan 049	Ribeye:	+ 0.92
T/D Ruby of Tiffany 824	\$B:	194
Vermilion Spur D177	\$F:	127
Dam: Ms Pass Creek D177 529 2006	\$W:	42
Ms Pass Creek 001 118 529	\$C:	294

CED	Actual	BW	Adj	WW	Milk	YW	Adj
Epd	BW	Epd	WW	Epd	Epd	Epd	YW
+ 6	72	+ 0.6	785	+ 75	+ 22	+ 139	1,115

Certified Angus Beef
Top 10% in Carcass Weight(CW)

93

Pass Creek 20293 283 4057

Tattoo: 4057-B24 Tag: 283

DOB: 04/05/24 Reg No: 21163773

Sire: Stevenson Ashland 00670	Marb:	+ 0.79
Stevenson Ashland 20293	Ribeye:	+ 0.54
Stevenson Trojan Erica 9155	\$B:	167
Tehama Patriarch F028	\$F:	107
Dam: Ms Pass Creek F028 0003 283	\$W:	55
Ms Pass Creek 709 870 0003	\$C:	272

CED	Actual	BW	Adj	WW	Milk	YW	Adj
Epd	BW	Epd	WW	Epd	Epd	Epd	YW
+ 6	76	+ 1.1	729	+ 72	+ 25	+ 134	1,124

Certified Angus Beef

94

Pass Creek H82 629 4097

Tattoo: 4097-B24 Tag: 629

DOB: 05/03/24 Reg No: 21163790

Sire: G A R Home Town	Marb:	+ 0.86
KB-Home Town of G35 H82	Ribeye:	+ 1.03
KB-Miss of E09 G35	\$B:	203
Pass Creek 001 159 3057	\$F:	136
Dam: Ms Pass Creek 3057 264 629	\$W:	33
Ms Pass Creek 560 049 264	\$C:	296

CED	Actual	BW	Adj	WW	Milk	YW	Adj
Epd	BW	Epd	WW	Epd	Epd	Epd	YW
+ 6	78	+ 2.2	818	+ 86	+ 33	+ 158	1,120

Certified Angus Beef
Top 2% in Carcass Wt-Top 4% in Yearling Wt-Top 10% WW & Milk-Top 15% Rib Eye

95

Pass Creek 2033 919 4127

Tattoo: 4127-B24 Tag: 919

DOB: 03/27/24 Reg No: 21163807

Sire: Vermilion Bomber G445	Marb:	+ 0.69
Pass Creek G445 733 2033	Ribeye:	+ 0.68
Ms Pass Creek 3038 064 733	\$B:	166
O A Upward 104	\$F:	108
Dam: Ms Pass Creek 104 300 919	\$W:	73
Ms Pass Creek 9027 85 300	\$C:	288

CED	Actual	BW	Adj	WW	Milk	YW	Adj
Epd	BW	Epd	WW	Epd	Epd	Epd	YW
+ 7	76	+ 0.4	665	+ 63	+ 20	+ 107	1,087

Certified Angus Beef
Top 5% in Carcass Fat

Spring Bulls



Pass Creek 2068 826 477

Tattoo: 477-B24 Tag: 826

DOB: 03/17/24 Reg No: 21163866

T/D Nationwide 8150
Sire: Pass Creek 8150 974 2068
 Ms Pass Creek 25 661 974
 Pass Creek A187 445 6079
Dam: Ms Pass Creek 6079 5001 826
 Ms Pass Creek 3070 380 5001

Marb:	+ 0.81
Ribeye:	+ 0.25
\$B:	158
\$F:	106
\$W:	39
\$C:	244

CED	Actual	BW	Adj	WW	Milk	YW	Adj
Epd	BW	Epd	WW	Epd	Epd	Epd	YW
+ 5	85	+ 3.3	634	+ 69	+ 19	+ 124	1,082



Pass Creek 2116 078 4147

Tattoo: 4147-B24 Tag: 078

DOB: 04/16/24 Reg No: 21163817

T/D Doc Ryan 049
Sire: Herbstler Doctor Black 2116
 PVA Blackcap May 4197
 Mr JT Enhance 709
Dam: Ms Pass Creek 709 798 078
 Ms Pass Creek 461 571 798

Marb:	+ 1.43
Ribeye:	+ 0.54
\$B:	177
\$F:	92
\$W:	34
\$C:	264

CED	Actual	BW	Adj	WW	Milk	YW	Adj
Epd	BW	Epd	WW	Epd	Epd	Epd	YW
+ 5	81	+ 2.7	669	+ 81	+ 25	+ 145	1,069

Certified Angus Beef

Top 10% in Carcass Marbling(Marb)

Top 15% in Wean Weight(WW, Yearling Weight(YW & Scrotal



Pass Creek K048 100 4064

Tattoo: 4064-B24 Tag: 100

DOB: 03/30/24 Reg No: 21163777

Connealy King Air
Sire: Vermilion King Air K048
 Vermilion Eldina 0173
 Pass Creek 461 408 6064
Dam: Ms Pass Creek 6064 303 100
 Ms Pass Creek 9027 6116 303

Marb:	+ 0.63
Ribeye:	+ 0.26
\$B:	138
\$F:	92
\$W:	73
\$C:	252

CED	Actual	BW	Adj	WW	Milk	YW	Adj
Epd	BW	Epd	WW	Epd	Epd	Epd	YW
-3	80	+ 4.1	694	+ 76	+ 27	+ 128	1,099



Pass Creek 8150 170 4076

Tattoo: 4076-B24 Tag: 170

DOB: 03/21/24 Reg No: 21163781

B/R Nationwide 69
Sire: T/D Nationwide 8150
 B/R Ruby of Tiffany 2110
 Pass Creek 7109 78 9156
Dam: Ms Pass Creek 9156 924 170
 Ms Pass Creek 6078 345 924

Marb:	+ 1.04
Ribeye:	+ 0.09
\$B:	194
\$F:	132
\$W:	31
\$C:	283

CED	Actual	BW	Adj	WW	Milk	YW	Adj
Epd	BW	Epd	WW	Epd	Epd	Epd	YW
+ 1	78	+ 4.3	733	+ 84	+ 17	+ 148	1,138

Certified Angus Beef

Top 5% in Carcass Weight(CW),Top 10% Yearling Weight(YW), Top 15% in Wean Weight(WW)

Spring Bulls

100

Pass Creek 8150 1000 439

Tattoo: 439-B24 Tag: 1000

DOB: 04/03/24 Reg No: 21163840

Sire: T/D Nationwide 8150
B/R Nationwide 69
B/R Ruby of Tiffany 2110
T/D Payweight 1682-7109
Dam: Ms Pass Creek 7109 7103 1000
Ms Pass Creek 4045 35 7103

Marb:	+ 0.80
Ribeye:	+ 0.77
\$B:	166
\$F:	104
\$W:	34
\$C:	249

CED	Actual	BW	Adj	WW	Milk	YW	Adj
Epd	BW	Epd	WW	Epd	Epd	Epd	YW
+ 4	78	+ 3.1	694	+ 70	+ 25	+ 127	1,132

Certified Angus Beef

Top 5% Sroctal Circumference (SC)

101

Pass Creek 0048 674 4100

Tattoo: 4100-B24 Tag: 674

DOB: 03/24/24 Reg No: 21163794

Sire: T/D Payweight 1682-7109
Pass Creek 7109 5006 0048
Ms Pass Creek 1027 394 5006
B/R Warrior 461
Dam: Ms Pass Creek 461 47 674
Ms Pass Creek X25 197 47

Marb:	+ 0.46
Ribeye:	+ 0.19
\$B:	129
\$F:	93
\$W:	40
\$C:	207

CED	Actual	BW	Adj	WW	Milk	YW	Adj
Epd	BW	Epd	WW	Epd	Epd	Epd	YW
+ 7	80	+ 2.2	703	+ 54	+ 32	+ 108	1,087

102

Pass Creek 0048 737 4107

Tattoo: 4107-B24 Tag: 737

DOB: 04/02/24 Reg No: 21163798

Sire: T/D Payweight 1682-7109
Pass Creek 7109 5006 0048
Ms Pass Creek 1027 394 5006
Pass Creek 9108 275 4075
Dam: Ms Pass Creek 4075 1029 737
Ms Pass Creek 53 7101 1029

Marb:	+ 0.51
Ribeye:	+ 0.34
\$B:	155
\$F:	112
\$W:	28
\$C:	229

CED	Actual	BW	Adj	WW	Milk	YW	Adj
Epd	BW	Epd	WW	Epd	Epd	Epd	YW
-8	88	+ 4.5	690	+ 69	+ 30	+ 120	1,085

103

Pass Creek 0048 616 4094

Tattoo: 4094-B24 Tag: 616

DOB: 03/29/24 Reg No: 21163788

Sire: T/D Payweight 1682-7109
Pass Creek 7109 5006 0048
Ms Pass Creek 1027 394 5006
S A Romeo 1421
Dam: Ms Pass Creek 1421 169 616
Ms Pass Creek 53 7239 169

Marb:	+ 0.70
Ribeye:	-0.03
\$B:	152
\$F:	108
\$W:	22
\$C:	219

CED	Actual	BW	Adj	WW	Milk	YW	Adj
Epd	BW	Epd	WW	Epd	Epd	Epd	YW
+ 1	88	+ 3.1	690	+ 62	+ 25	+ 112	1,047

Spring Bulls

104

Pass Creek 20342 591 4091

Tattoo: 4091-B24 Tag: 591

DOB: 04/03/24 Reg No: 21163787

Stevenson Catalyst 60575
Sire: Stevenson Catalyst 20342
 Stevenson Blackbird 8066
 S A V Final Answer 2488
Dam: Ms Pass Creek 2488 321 591
 Ms Pass Creek 13 857 321

Marb:	+ 0.65
Ribeye:	+ 0.51
\$B:	138
\$F:	89
\$W:	55
\$C:	234

CED	Actual	BW	Adj	WW	Milk	YW	Adj
Epd	BW	Epd	WW	Epd	Epd	Epd	YW
+ 2	83	+ 3.4	693	+ 60	+ 32	+ 107	1,125

Top 10% in Milk

105

Pass Creek 0048 474 4086

Tattoo: 4086-B24 Tag: 474

DOB: 03/18/24 Reg No: 21163784

T/D Payweight 1682-7109
Sire: Pass Creek 7109 5006 0048
 Ms Pass Creek 1027 394 5006
 Bovagene Exceller 001
Dam: Ms Pass Creek 001 110 474
 MS Pass Creek 9020 956 110

Marb:	+ 0.66
Ribeye:	+ 0.34
\$B:	138
\$F:	91
\$W:	56
\$C:	235

CED	Actual	BW	Adj	WW	Milk	YW	Adj
Epd	BW	Epd	WW	Epd	Epd	Epd	YW
+ 6	78	+ 0.6	614	+ 53	+ 31	+ 98	982

106

Pass Creek 2097 264 4054

Tattoo: 4054-B24 Tag: 264

DOB: 03/19/24 Reg No: 21163772

Tehama Patriarch F028
Sire: Pass Creek F028 0005 2097
 Ms Pass Creek 7109 88 0005
 SydGen Enhance
Dam: Ms Pass Creek 5209 04 264
 Ms Pass Creek 25 04 092

Marb:	+ 0.94
Ribeye:	+ 0.72
\$B:	182
\$F:	116
\$W:	76
\$C:	312

CED	Actual	BW	Adj	WW	Milk	YW	Adj
Epd	BW	Epd	WW	Epd	Epd	Epd	YW
+ 14	80	- 0.5	691	+ 76	+ 30	+ 138	1,080

Certified Angus Beef

Top 3% in Calving Ease Direct(CED)

Top 10% Scrotal Circumference(SC)

107

Pass Creek 8150 141 4072

Tattoo: 4072-B24 Tag: 141

DOB: 04/01/24 Reg No: 21163780

B/R Nationwide 69
Sire: T/D Nationwide 8150
 B/R Ruby of Tiffany 2110
 T/D Payweight 1682-7109
Dam: Ms Pass Creek 7109 791 141
 Ms Pass Creek 3038 493 791

Marb:	+ 0.94
Ribeye:	+ 0.25
\$B:	171
\$F:	109
\$W:	44
\$C:	266

CED	Actual	BW	Adj	WW	Milk	YW	Adj
Epd	BW	Epd	WW	Epd	Epd	Epd	YW
+ 5	82	+ 1.6	704	+ 70	+ 18	+ 121	1,056

Certified Angus Beef

Spring Bulls

108

Pass Creek 20342 097 4150

Tattoo: 4150-B24 Tag: 097

DOB: 03/27/24 Reg No: 21163820

Sire: Stevenson Catalyst 60575
Stevenson Catalyst 20342
Stevenson Blackbird 8066
Mr JT Enhance 709

Dam: Ms Pass Creek 709 812 097
Ms Pass Creek 4045 403 812

Marb:	+ 0.27
Ribeye:	+ 0.69
\$B:	109
\$F:	73
\$W:	44
\$C	185

CED	Actual	BW	Adj	WW	Milk	YW	Adj
Epd	BW	Epd	WW	Epd	Epd	Epd	YW
+ 4	80	+ 2.4	751	+ 67	+ 24	+ 120	1,060

109

Pass Creek 2116 006 4138

Tattoo: 4138-B24 Tag: 006

DOB: 04/18/24 Reg No: 21163812

Sire: T/D Doc Ryan 049
Herbster Doctor Black 2116
PVA Blackcap May 4197
Mr JT Enhance 811

Dam: Ms Pass Creek 811 841 006
Ms Pass Creek D177 551 841

Marb:	+ 1.19
Ribeye:	+ 0.23
\$B:	151
\$F:	81
\$W:	65
\$C	261

CED	Actual	BW	Adj	WW	Milk	YW	Adj
Epd	BW	Epd	WW	Epd	Epd	Epd	YW
+ 4	80	+ 2.6	736	+ 71	+ 34	+ 124	1,098

Certified Angus Beef

Top 10% in Milk

Top 15% Marbling

110

Pass Creek 2116 019 4139

Tattoo: 4139-B24 Tag: 019

DOB: 04/18/24 Reg No: 21163813

Sire: T/D Doc Ryan 049
Herbster Doctor Black 2116
PVA Blackcap May 4197
Pass Creek A187 43 6078

Dam: Ms Pass Creek 6078 345 019
Ms Pass Creek X25 0101 345

Marb:	+ 1.03
Ribeye:	+ 0.75
\$B:	167
\$F:	96
\$W:	37
\$C	254

CED	Actual	BW	Adj	WW	Milk	YW	Adj
Epd	BW	Epd	WW	Epd	Epd	Epd	YW
+ 12	80	+ 0.9	680	+ 69	+ 20	+ 119	1,096

Certified Angus Beef

Top 10% Calving Ease Direct (CED)

111

Pass Creek H82 7002 4196

Tattoo: 4196-B24 Tag: 7002

DOB: 04/05/24 Reg No: 21193018

Sire: G A R Home Town
KB-Home Town of G35 H82
KB-Miss of E09 G35
O A Upward 104

Dam: Ms Pass Creek 104 978 7002
Ms Pass Creek 777 2077 978

Marb:	+ 0.78
Ribeye:	+ 0.48
\$B:	152
\$F:	93
\$W:	64
\$C	261

CED	Actual	BW	Adj	WW	Milk	YW	Adj
Epd	BW	Epd	WW	Epd	Epd	Epd	YW
+ 7	79	+ 2.4	667	+ 71	+ 28	+ 125	997

Certified Angus Beef

Top 15% in Carcass Fat

Spring Bulls

112

PASS Creek 0048 513 4090

Tattoo: 4090-B24 Tag: 513

DOB: 03/17/24 Reg No: 21163786

T/D Payweight 1682-7109
Sire: Pass Creek 7109 5006 0048
 Ms Pass Creek 1027 394 5006
 Pass Creek 9020 908 1158
Dam: Ms Pass Creek 1158 057 513
 Miss Pass Creek 53 6198 057

Marb:	+ 0.62
Ribeye:	+ 0.18
\$B:	117
\$F:	74
\$W:	46
\$C:	198

CED	Actual	BW	Adj	WW	Milk	YW	Adj
Epd	BW	Epd	WW	Epd	Epd	Epd	YW
+ 6	78	-0.5	721	+ 50	+ 34	+ 97	1,007

Top 10% in Milk

Top 15% in Birth Weight(BW)

113

Pass Creek 20342 064 4144

Tattoo: 4144-B24 Tag: 064

DOB: 04/06/24 Reg No: 21163816

Stevenson Catalyst 60575
Sire: Stevenson Catalyst 20342
 Stevenson Blackbird 8066
 Pass Creek 461 408 6064
Dam: Ms Pass Creek 6064 693 064
 Ms Pass Creek A039 978 693

Marb:	+ 0.39
Ribeye:	+ 1.00
\$B:	138
\$F:	89
\$W:	23
\$C:	202

CED	Actual	BW	Adj	WW	Milk	YW	Adj
Epd	BW	Epd	WW	Epd	Epd	Epd	YW
-1	80	+ 3.2	743	+ 64	+ 22	+ 110	1,077

Top 2% of Carcass Fat Thickness(FAT)

114

Pass Creek 2097 2063 4060

Tattoo: 4060-B24 Tag: 2063

DOB: 03/30/24 Reg No: 21163775

Tehama Patriarch F028
Sire: Pass Creek F028 0005 2097
 Ms Pass Creek 7109 88 0005
 T/D Nationwide 8150
Dam: Ms Pass Creek 8150 921 2063
 Ms Pass Creek 6078 316 921

Marb:	+ 0.78
Ribeye:	+ 0.50
\$B:	178
\$F:	122
\$W:	31
\$C:	262

CED	Actual	BW	Adj	WW	Milk	YW	Adj
Epd	BW	Epd	WW	Epd	Epd	Epd	YW
+ 5	77	+ 1.4	657	+ 77	+ 26	+ 138	1,006

Certified Angus Beef

Top 15% in Carcass Weight(CW) & Scrotal Circumference(SC)

115

Pass Creek 2097 251 4051

Tattoo: 4051-B24 Tag: 251

DOB: 03/28/24 Reg No: 21206352

Tehama Patriarch F028
Sire: Pass Creek F028 0005 2097
 Ms Pass Creek 7109 88 0005
 T/D Nationwide 8150
Dam: Ms Pass Creek 8150 929 251
 Ms Pass Creek 104 418 929

Marb:	+ 1.07
Ribeye:	+ 0.03
\$B:	153
\$F:	90
\$W:	65
\$C:	263

CED	Actual	BW	Adj	WW	Milk	YW	Adj
Epd	BW	Epd	WW	Epd	Epd	Epd	YW
+ 5	68	+ 1.0	716	+ 83	+ 31	+ 144	1,159

Certified Angus Beef

Spring Bulls

116

Pass Creek 9156 918 4126

Tattoo: 4126-B24 Tag: 918

DOB: 04/01/24 Reg No: 21163806

Sire: T/D Payweight 1682-7109
Pass Creek 7109 78 9156
Ms Pass Creek 25 512 78

Dam: Vermilion Spur D177
Ms Pass Creek D177 277 918
Ms Pass Creek 9027 851 277

Marb:	+ 0.40
Ribeye:	+ 0.37
\$B:	124
\$F:	86
\$W:	25
\$C	186

CED	Actual	BW	Adj	WW	Milk	YW	Adj
Epd	BW	Epd	WW	Epd	Epd	Epd	YW
+ 0	83	+ 3.5	703	+ 64	+ 33	+ 112	989

Top 10% in Milk

117

Pass Creek 0048 927 4130

Tattoo: 4130-B24 Tag: 927

DOB: 03/24/24 Reg No: 21163808

Sire: T/D Payweight 1682-7109
Pass Creek 7109 5006 0048
Ms Pass Creek 1027 394 5006

Dam: O A Upward 104
Ms Pass Creek 104 404 927
Ms Pass Creek 13 089 404

Marb:	+ 0.92
Ribeye:	-0.06
\$B:	150
\$F:	95
\$W:	37
\$C	232

CED	Actual	BW	Adj	WW	Milk	YW	Adj
Epd	BW	Epd	WW	Epd	Epd	Epd	YW
+ 1	78	+ 1.6	579	+ 50	+ 23	+ 91	963

Certified Angus Beef

118

Pass Creek K048 239 4049

Tattoo: 4049-B24 Tag: 239

DOB: 03/29/24 Reg No: 21163771

Sire: Connealy King Air
Vermilion King Air K048
Vermilion Eldina 0173

Dam: Vermilion Bomber G445
Ms Pass Creek G445 840 239
Ms Pass Creek D177 549 840

Marb:	+ 0.79
Ribeye:	+ 0.19
\$B:	162
\$F:	110
\$W:	58
\$C	268

CED	Actual	BW	Adj	WW	Milk	YW	Adj
Epd	BW	Epd	WW	Epd	Epd	Epd	YW
+ 5	80	+ 1.8	630	+ 69	+ 25	+ 125	1,177

Top 10% in Scrotal Circumference(SC)

119

Pass Creek 0048 624 4096

Tattoo: 4096-B24 Tag: 624

DOB: 03/31/24 Reg No: 21163789

Sire: T/D Payweight 1682-7109
Pass Creek 7109 5006 0048
Ms Pass Creek 1027 394 5006

Dam: Pass Creek 001 159 3057
Ms Pass Creek 3057 241 624
Ms Pass Creek 8085 902 241

Marb:	+ 0.68
Ribeye:	+ 0.22
\$B:	126
\$F:	76
\$W:	54
\$C	217

CED	Actual	BW	Adj	WW	Milk	YW	Adj
Epd	BW	Epd	WW	Epd	Epd	Epd	YW
+ 6	80	+ 1.2	593	+ 47	+ 24	+ 87	1,015

Spring Bulls

120

Pass Creek 2033 651 4099

Tattoo: 4099-B24 Tag: 651

DOB: 03/20/24 Reg No: 21163792

Sire: Pass Creek G445 733 2033
 Ms Pass Creek 3038 064 733
 B/R Warrior 461
Dam: Ms Pass Creek 461 4300 651
 Ms Pass Creek 307R 098 4300

Marb:	+ 0.27
Ribeye:	+ 0.34
\$B:	101
\$F:	66
\$W:	59
\$C	190

CED	Actual	BW	Adj	WW	Milk	YW	Adj
Epd	BW	Epd	WW	Epd	Epd	Epd	YW
+ 1	78	+ 3.8	659	+ 70	+ 21	+ 107	968

Top 2% in Carcass Fat

121

Pass Creek 2097 206 4036

Tattoo: 4036-B24 Tag: 206

DOB: 03/29/24 Reg No: 21163764

Sire: Pass Creek F028 0005 2097
 Ms Pass Creek 7109 88 0005
 Gray's Black Granite 1245
Dam: Ms Pass Creek 1245 591 206
 Ms Pass Creek 2488 321 591

Marb:	+ 0.82
Ribeye:	+ 0.67
\$B:	154
\$F:	91
\$W:	44
\$C	244

CED	Actual	BW	Adj	WW	Milk	YW	Adj
Epd	BW	Epd	WW	Epd	Epd	Epd	YW
+ 3	78	+ 2.7	697	+ 70	+ 22	+ 118	1,022

Certified Angus Beef

122

Pass Creek 2097 27 4034

Tattoo: 4034-B24 Tag: 27

DOB: 04/01/24 Reg No: 21195551

Sire: Pass Creek F028 0005 2097
 Ms Pass Creek 7109 88 0005
 Vermilion Spur D177
Dam: Ms Pass Creek D177 459 27
 Ms Pass Creek 13 202 459

Marb:	+ 0.81
Ribeye:	+ 0.37
\$B:	150
\$F:	96
\$W:	53
\$C	248

CED	Actual	BW	Adj	WW	Milk	YW	Adj
Epd	BW	Epd	WW	Epd	Epd	Epd	YW
+ 13	76	+ 0.0	682	+ 68	+ 27	+ 116	970

Top 3% in Scrotal Circumference (SC)

Top 10% in Calving Ease Direct (CED)

123

Pass Creek 20293 24 4031

Tattoo: 4031-B24 Tag: 24

DOB: 04/01/24 Reg No: 21167211

Sire: Stevenson Ashland 00670
 Stevenson Ashland 20293
 Stevenson Trojan Erica 9155
 Mr JT Enhance 811
Dam: Ms Pass Creek 811 418 24
 Ms Pass Creek 0035 231 418

Marb:	+ 0.55
Ribeye:	+ 0.04
\$B:	125
\$F:	82
\$W:	41
\$C	203

CED	Actual	BW	Adj	WW	Milk	YW	Adj
Epd	BW	Epd	WW	Epd	Epd	Epd	YW
+ 7	78	+ 0.8	669	+ 56	+ 26	+ 108	1,008

Top 15% in Carcass Fat

Spring Bulls

124

Pass Creek 8150 115 4069

Tattoo: 4069-B24 Tag: 115

DOB: 03/28/24 Reg No: 21163779

B/R Nationwide 69
Sire: T/D Nationwide 8150
 B/R Ruby of Tiffany 2110
 T/D Nationwide 8150
Dam: Ms Pass Creek 8150 515 115
 Ms Pass Creek 2008 067 515

Marb:	+ 0.70
Ribeye:	+ 0.34
\$B:	159
\$F:	113
\$W:	64
\$C:	270

CED	Actual	BW	Adj	WW	Milk	YW	Adj
Epd	BW	Epd	WW	Epd	Epd	Epd	YW
+ 4	82	+ 3.6	659	+ 67	+ 28	+ 124	1.081

125

Pass Creek 2116 026 4140

Tattoo: 4140-B24 Tag: 026

DOB: 03/27/24 Reg No: 21163815

T/D Doc Ryan 049
Sire: Herbst Doctor Black 2116
 PVA Blackcap May 4197
 T/D Payweight 1682-7109
Dam: Ms Pass Creek 7109 431 026
 Ms Pass Creek 13 0111 431

Marb:	+ 1.03
Ribeye:	+ 0.36
\$B:	169
\$F:	107
\$W:	49
\$C:	268

CED	Actual	BW	Adj	WW	Milk	YW	Adj
Epd	BW	Epd	WW	Epd	Epd	Epd	YW
+ 4	78	+ 2.8	721	+ 88	+ 18	+ 148	1.035

Certified Angus Beef

Top 10% in Wean Weight(WW), Yearling Weight(YW) & Scrotal Circumference(SC)

126

Pass Creek 2097 230 4043

Tattoo: 4043-B24 Tag: 230

DOB: 03/30/24 Reg No: 21163767

Tehama Patriarch F028
Sire: Pass Creek F028 0005 2097
 Ms Pass Creek 7109 88 0005
 Vermilion Bomber G445
Dam: Ms Pass Creek G445 8 230
 Ms Pass Creek 4048 0103 8

Marb:	+ 0.80
Ribeye:	+ 0.66
\$B:	152
\$F:	89
\$W:	51
\$C:	248

CED	Actual	BW	Adj	WW	Milk	YW	Adj
Epd	BW	Epd	WW	Epd	Epd	Epd	YW
+ 6	78	+ 0.8	684	+ 72	+ 26	+ 132	1.036

Certified Angus Beef

Top 4% in Scrotal Circumference(SC)

Top 15% in Carcass Fat

127

Pass Creek K048 197 4082

Tattoo: 4082-B24 Tag: 197

DOB: 03/22/24 Reg No: 21163783

Connealy King Air
Sire: Vermilion King Air K048
 Vermilion Eldina 0173
 Mr JT Enhance 709
Dam: Ms Pass Creek 709 731 197
 Ms Pass Creek 104 059 731

Marb:	+ 1.13
Ribeye:	-0.02
\$B:	164
\$F:	101
\$W:	84
\$C:	297

CED	Actual	BW	Adj	WW	Milk	YW	Adj
Epd	BW	Epd	WW	Epd	Epd	Epd	YW
+ 11	80	+ 1.0	600	+ 61	+ 32	+ 109	1.013

Certified Angus Beef

Top 10% in Milk

Top 15% for Docility

Spring Bulls

128

Pass Creek 20293 2121 4061

Tattoo: 4061-B24 Tag: 2121

DOB: 04/06/24 Reg No: 21163776

Sire: Stevenson Ashland 00670
Stevenson Ashland 20293
Stevenson Trojan Erica 9155
Vermilion Bomber G445

Dam: Ms Pass Creek G445 853 2121
Ms Pass Creek 854 616 853

Marb:	+ 1.04
Ribeye:	+ 0.78
\$B:	186
\$F:	108
\$W:	25
\$C:	266

CED	Actual	BW	Adj	WW	Milk	YW	Adj
Epd	BW	Epd	WW	Epd	Epd	Epd	YW
-6	79	+ 5.6	651	+ 76	+ 20	+ 129	1,000

Certified Angus Beef
Top 2% in Carcass Fat

129

Pass Creek 868F 280 4056

Tattoo: 4056-B24 Tag: 280

DOB: 03/12/24 Reg No: 21167261

Sire: LD Capitalist 316
Connealy King Air
Pasha of Conanga 557P
Tehama Patriarch F028

Dam: Ms Pass Creek F028 098 280
Ms Pass Creek 5209 823 098

Marb:	+ 0.87
Ribeye:	+ 0.99
\$B:	179
\$F:	112
\$W:	51
\$C:	283

CED	Actual	BW	Adj	WW	Milk	YW	Adj
Epd	BW	Epd	WW	Epd	Epd	Epd	YW
+ 12	80	+ 0.0	663	+ 65	+ 31	+ 128	1,031

Certified Angus Beef
Top 10% in Calving Ease Direct(CED)

130

Pass Creek 2097 238 4048

Tattoo: 4048-B24 Tag: 238

DOB: 04/19/24 Reg No: 21163770

Sire: Tehama Patriarch F028
Pass Creek F028 0005 2097
Ms Pass Creek 7109 88 0005
SydGen Enhance

Dam: Ms Pass Creek 5209 011 238
Ms Pass Creek 6078 226 011

Marb:	+ 0.78
Ribeye:	+ 0.49
\$B:	150
\$F:	92
\$W:	50
\$C:	245

CED	Actual	BW	Adj	WW	Milk	YW	Adj
Epd	BW	Epd	WW	Epd	Epd	Epd	YW
+ 8	72	-0.1	699	+ 62	+ 29	+ 115	1,027

Certified Angus Beef
Top 1% in Scrotal Circumference(SC)

131

Pass Creek 0048 812 4114

Tattoo: 4114-B24 Tag: 812

DOB: 03/17/24 Reg No: 21163802

Sire: T/D Payweight 1682-7109
Pass Creek 7109 5006 0048
Ms Pass Creek 1027 394 5006
Pass Creek 172 080 4045

Dam: Ms Pass Creek 4045 403 812
Ms Pass Creek 0035 266 403

Marb:	+ 0.32
Ribeye:	+ 0.21
\$B:	121
\$F:	89
\$W:	49
\$C:	206

CED	Actual	BW	Adj	WW	Milk	YW	Adj
Epd	BW	Epd	WW	Epd	Epd	Epd	YW
+ 5	82	+ 0.2	692	+ 49	+ 22	+ 90	844

Spring Bulls

132

Pass Creek 20342 645 4098

Tattoo: 4098-B24 Tag: 645

DOB: 04/24/24 Reg No: 21163791

Sire: Stevenson Catalyst 60575
Stevenson Catalyst 20342
Stevenson Blackbird 8066
Pass Creek 13 118 3070
Dam: Ms Pass Creek 3070 405 645
Ms Pass Creek 1158 7246 405

Marb:	+ 0.07
Ribeye:	+ 0.77
\$B:	101
\$F:	71
\$W:	41
\$C	172

CED	Actual	BW	Adj	WW	Milk	YW	Adj
Epd	BW	Epd	WW	Epd	Epd	Epd	YW
+ 3	78	+ 0.0	713	+ 44	+ 26	+ 83	1.075

Top 10% in Carcass Fat

133

Pass Creek 2033 72 4102

Tattoo: 4102-B24 Tag: 72

DOB: 04/18/24 Reg No: 21163795

Sire: Vermilion Bomber G445
Pass Creek G445 733 2033
Ms Pass Creek 3038 064 733
B/R Warrior 461
Dam: Ms Pass Creek 461 57 72
Ms Pass Creek 1421 0124 57

Marb:	+ 0.42
Ribeye:	+ 0.34
\$B:	147
\$F:	108
\$W:	57
\$C	248

CED	Actual	BW	Adj	WW	Milk	YW	Adj
Epd	BW	Epd	WW	Epd	Epd	Epd	YW
-1	82	+ 2.0	655	+ 66	+ 30	+ 116	1.001

134

Pass Creek H82 741 4108

Tattoo: 4108-B24 Tag: 741

DOB: 03/19/24 Reg No: 21163799

Sire: G A R Home Town
KB-Home Town of G35 H82
KB-Miss of E09 G35
O A Upward 104
Dam: Ms Pass Creek 104 144 741
Ms Pass Creek 0415 954 144

Marb:	+ 1.44
Ribeye:	+ 0.48
\$B:	191
\$F:	100
\$W:	63
\$C	311

CED	Actual	BW	Adj	WW	Milk	YW	Adj
Epd	BW	Epd	WW	Epd	Epd	Epd	YW
+ 15	75	-1.8	672	+ 48	+ 38	+ 93	990

Certified Angus Beef

Top 2% milk-Top 3% CED-Top 5% BW-Top 10% Marb-Top 15% Fat

135

Pass Creek 2068 733 4106

Tattoo: 4106-B24 Tag: 733

DOB: 04/24/24 Reg No: 21163797

Sire: T/D Nationwide 8150
Pass Creek 8150 974 2068
Ms Pass Creek 25 661 974
Pass Creek 106 17 3038
Dam: Ms Pass Creek 3038 064 733
Miss Pass Creek 746 1175 064

Marb:	+ 0.56
Ribeye:	+ 0.12
\$B:	130
\$F:	91
\$W:	51
\$C	220

CED	Actual	BW	Adj	WW	Milk	YW	Adj
Epd	BW	Epd	WW	Epd	Epd	Epd	YW
+ 8	76	+ 2.6	674	+ 69	+ 30	+ 121	1.029

Spring Bulls

136

PASS CREEK 267 4195

Tattoo: 4195-B24 Tag: 267

DOB: 03/05/24 Reg No: 627716086

Sire:

Pass Creek 7109 5006 0048

Dam: Ms Pass Creek 0048 007 267

Ms Pass Creek 811 849 007

Marb:	
Ribeye:	
\$B:	
\$F:	
\$W:	
\$C	

CED	Actual	BW	Adj	WW	Milk	YW	Adj
Epd	BW	Epd	WW	Epd	Epd	Epd	YW
	84						

Pending registration

Actual Yearling Weight 1220#

137

PASS CREEK 929 4131

Tattoo: 4131-B24 Tag: 929

DOB: 03/06/24 Reg No: 627716166

Sire:

O A Upward 104

Dam: Ms Pass Creek 104 418 929

Ms Pass Creek 0035 231 418

Marb:	
Ribeye:	
\$B:	
\$F:	
\$W:	
\$C	

CED	Actual	BW	Adj	WW	Milk	YW	Adj
Epd	BW	Epd	WW	Epd	Epd	Epd	YW
	67		706				

Pending registration

Actual Yearling Weight 1170#

138

PASS CREEK 2033 8117 4124

Tattoo: 4124-KB24 Tag: 8117

DOB: 04/10/24 Reg No: 627716158

Sire: Pass Creek G445 733 2033

Ms Pass Creek 3038 064 733

B/R Warrior 461

Dam: Ms KC 461 1014 8117

Ms Pass Creek 5049 1150 1014

Marb:	
Ribeye:	
\$B:	
\$F:	
\$W:	
\$C	

CED	Actual	BW	Adj	WW	Milk	YW	Adj
Epd	BW	Epd	WW	Epd	Epd	Epd	YW
	79		675				1,016

Purebred

139

Pass Creek 2097 251 4193

Tattoo: 4193-B24 Tag: 251

DOB: 03/28/24 Reg No: 21213254

Sire: Pass Creek F028 0005 2097

Ms Pass Creek 7109 88 0005

T/D Nationwide 8150

Dam: Ms Pass Creek 8150 929 251

Ms Pass Creek 104 418 929

Marb:	I + 0.91
Ribeye:	I + 0.44
\$B:	167
\$F:	105
\$W:	64
\$C	281

CED	Actual	BW	Adj	WW	Milk	YW	Adj
Epd	BW	Epd	WW	Epd	Epd	Epd	YW
I + 8	68	I + 0.5	716	I + 75	I + 29	I + 134	1,159

Certified Angus Beef

Spring Bulls

140

PASS CREEK 5016 4190

Tattoo: 4190-KBG2 Tag: 5016KCG

DOB: 03/06/24 Reg No: 627716126

Sire:

RM I Trend 7528

Dam: Ms KC 9134 311 5016

Silcox Angus 9134 733 311

Marb:	
Ribeye:	
\$B:	
\$F:	
\$W:	
\$C	

CED	Actual	BW	Adj	WW	Milk	YW	Adj
Epd	BW	Epd	WW	Epd	Epd	Epd	YW
	74						

Purebred

Actual Yearling Weight 1085#

141

PASS CREEK 161 4073

Tattoo: 4073-BG24 Tag: 161CG

DOB: 04/03/24 Reg No:

Sire:

Dam: Ms Pass Creek 8110 161

Marb:	
Ribeye:	
\$B:	
\$F:	
\$W:	
\$C	

CED	Actual	BW	Adj	WW	Milk	YW	Adj
Epd	BW	Epd	WW	Epd	Epd	Epd	YW
	76						

Purebred

Actual Wean Weight 640#

Actual Yearling Weight 1035#

142

PASS CREEK 8150 12 4024

Tattoo: 4012-BG24 Tag: 12CG

DOB: 04/01/24 Reg No: 627716060

Sire: T/D Nationwide 8150

B/R Nationwide 69

B/R Ruby of Tiffany 2110

Pass Creek 107S 0124 8002

Dam: Ms Pass Creek 8002 576 12

Ms Pass Creek 576

Marb:	
Ribeye:	
\$B:	
\$F:	
\$W:	
\$C	

CED	Actual	BW	Adj	WW	Milk	YW	Adj
Epd	BW	Epd	WW	Epd	Epd	Epd	YW
	78		679				1.013

Purebred

Actual YW 935#

143

PASS CREEK 218 4039

Tattoo: 4039-BG24 Tag: 218

DOB: 03/15/24 Reg No: 627716069

Sire:

Vermilion Spur D177

Dam: Ms Pass Creek D177 7 218

Ms Pass Creek 1245 52 7

Marb:	
Ribeye:	
\$B:	
\$F:	
\$W:	
\$C	

CED	Actual	BW	Adj	WW	Milk	YW	Adj
Epd	BW	Epd	WW	Epd	Epd	Epd	YW
	74		770				

Purebred

Actual WW 725#

Actual YW 1065#

Spring Bulls

144

PASS CREEK 235 4047

Tattoo: 4047-BG24 Tag: 235

DOB: 03/11/24 Reg No: 627716077

Sire:

Pass Creek 6231 7099 9186

Dam: Ms Pass Creek 9186 826 235

Ms Pass Creek 6079 5001 826

Marb:	
Ribeye:	
\$B:	
\$F:	
\$W:	
\$C	

CED	Actual	BW	Adj	WW	Milk	YW	Adj
Epd	BW	Epd	WW	Epd	Epd	Epd	YW
	72		666				

Purebred

Actual YW 970#

145

PASS CREEK 7005 4192

Tattoo: 4192-BG24 Tag: 7005

DOB: 01/01/24 Reg No:

Sire:

Pass Creek 172 080 4045

Dam: Ms Pass Creek 4045 306 7005

SILCOX ANGUS 7528 82 306

Marb:	
Ribeye:	
\$B:	
\$F:	
\$W:	
\$C	

CED	Actual	BW	Adj	WW	Milk	YW	Adj
Epd	BW	Epd	WW	Epd	Epd	Epd	YW
	75						

Purebred

Actual YW 895#

146

PASS CREEK 714 4104

Tattoo: 4104-B24 Tag: 714

DOB: 04/04/24 Reg No: 627716139

Sire:

Gray's Black Granite 1245

Dam: Ms Pass Creek 1245 573 714

Ms Pass Creek 1158 933 573

Marb:	
Ribeye:	
\$B:	
\$F:	
\$W:	
\$C	

CED	Actual	BW	Adj	WW	Milk	YW	Adj
Epd	BW	Epd	WW	Epd	Epd	Epd	YW
	75		583				

Pending registration

Actual WW 562#

Actual YW 880#

147

PASS CREEK 8150 162 4074

Tattoo: 4074-BG24 Tag: 162CG

DOB: 04/03/24 Reg No: 627716105

Sire: T/D Nationwide 8150

B/R Ruby of Tiffany 2110

Dam:

Marb:	
Ribeye:	
\$B:	
\$F:	
\$W:	
\$C	

CED	Actual	BW	Adj	WW	Milk	YW	Adj
Epd	BW	Epd	WW	Epd	Epd	Epd	YW
	80		683				974

Purebred

Actual WW 625#

Actual YW 895#

Spring Bulls



148

PASS CREEK 19 4191
Tattoo: 4191-BG24 Tag: 19CG
DOB: 03/26/24 Reg No: 627716093

Sire:

Pass Creek 136 241 8023

Dam: Ms Pass Creek 8023 2085 19

Ms Pass Creek 9027 2085

Marb:	
Ribeye:	
\$B:	
\$F:	
\$W:	
\$C	

CED	Actual	BW	Adj	WW	Milk	YW	Adj
Epd	BW	Epd	WW	Epd	Epd	Epd	YW
		84					

Purebred

Actual WW 615#

Actual YW 990#

NOTES

Headin' for the pass...



... CREEK ANGUS RANCH

P.O. Box 148 Wyoia, MT 59089

FIRST CLASS

*The Easy Doin'
Kind Sale*

APRIL 9, 2025

Please bring this catalog to the sale!