

DANELL DIAMOND SIX GELBVIEH

30th Annual Bull Sale

Sons of these great sires sell...



Top Shelf



All American



Pay Pal

TIMED ONLINE ONLY AUCTION

BIDDING OPENS ON MARCH 27 • BIDDING CLOSSES @ 1 P.M. ON MARCH 29, 2025
SALE CATALOG, VIDEOS & BIDDING AVAILABLE AT WWW.BILLPELTON.COM

— From the Heart of Big Sky Country —
DANELL DIAMOND SIX RANCH GELBYIEH
30th Annual Production Sale

Thirty years later and the weather forced us to change our sale date! Although it has always been the third Saturday in March, the auction will close March 29 this year! We had so much snow and such bitter cold temperatures that we were unable to get pictures, videos, fertility testing, or ultrasound in time to put a catalog together for our usual sale date. We hope this has not caused an inconvenience for any of you.

Again, we are doing the online only auction with www.billpelton.com. Give us a call if you have any questions about any of the bulls, or the auction process. Also, you can always count on Bill Pelton's daughter, Darci Sachdeva, to talk you through the technical part of getting online and bidding. She is professional, very personable, and easy to reach on the phone at (406)794-3174. The auction will open Thursday, March 27 and close at 1:00 pm on Saturday, the 29th of March. The auction actually closes on all the bulls 5 minutes after the last bid on any bull.

We plan to have an open house here at the ranch to view the bulls starting at 4:00 Friday afternoon on the 28th. They are also here for viewing anytime from now until then if you just give us a call to let us know you would like to take a look. As always, you are protected by our "sight unseen" guarantee of satisfaction if you choose to buy, but have been unable to get here to view them. Please give me a call with any questions.

Of course, we always strive to improve our offering from year to year and I feel this set of young bulls lives up to the excellence you have come to expect from us! We have dedicated our breeding program to help our customers and ourselves to raise calves that will put pounds on, replacements in the heifer pen, and animals that will grade choice and bring your buyers back looking for your calves in following years.

Dr. Greg Carlson, DVM does our foot scoring and does a serious evaluation and he is happy to explain the process if interested. A perfect foot score is 5 for heel height and 5 for claw structure (5/5) and we are happy to report that we have a few of those as well as some near perfect scores! We also vaccinate the bulls with Fusogard (foot rot prevention) and Bovi-Shield GOLD FP 5 VL5 and pour them at the time of fertility testing, which was 2/26/2025.

We are also willing to pay for ½ of the insurance cost to insure every bull sold this year. We have always guaranteed our bulls through the first breeding season, but we feel that this offer of paying for ½ of the insurance is a better deal for you and us as the insurance covers the first full year. Insurance starts at 11% of the purchase price — I would pay 5½%.

Please join us for a PRE-SALE GATHERING at the Danell Diamond Six Ranch on Friday, March 28th starting at 4 p.m.
This is a great chance to check out the bulls and a good excuse to get our friends and neighbors together for a visit!

DNA TESTING: All homozygous black and homozygous polled bulls are guaranteed by birth right or by DNA testing.

SEMEN TEST and HEALTH INFO: Full Breeding Soundness Exams have been performed. Scrotal measurements and foot scores are listed with the performance data on each bull. Bulls were tested and examined by Dr. Greg Carlson, Horizon Veterinary Clinic of Lewistown. Bulls have also been BVD tested and vaccinated with Bovi-Shield GOLD FP VL5.

TIMED ONLINE ONLY AUCTION
BIDDING OPENS ON MARCH 27 • BIDDING CLOSSES @ 1 P.M. ON MARCH 29
SALE CATALOG, VIDEOS & BIDDING AVAILABLE AT WWW.BILLPELTON.COM

ALL BULLS ULTRASOUNDED
For more information, please contact
DON DANELL @ 406-366-6953



Danell Diamond Six Ranch
Don, Omie, Chase & Teale Rose Danell
Lewistown, MT • danelldiamondsix@gmail.com



Danell Diamond Six Ranch Gelbvieh

TIMED ONLINE ONLY AUCTION



BIDDING OPENS ON MARCH 27 • BIDDING CLOSSES @ 1 P.M. ON MARCH 29, 2025
VIDEOS & BIDDING AVAILABLE AT WWW.BILLPELTON.COM

ONLINE AUCTION:

Bid at www.billpelton.com.
Darci Pelton - (406) 794-3174

INTERNET DIRECTIONS:

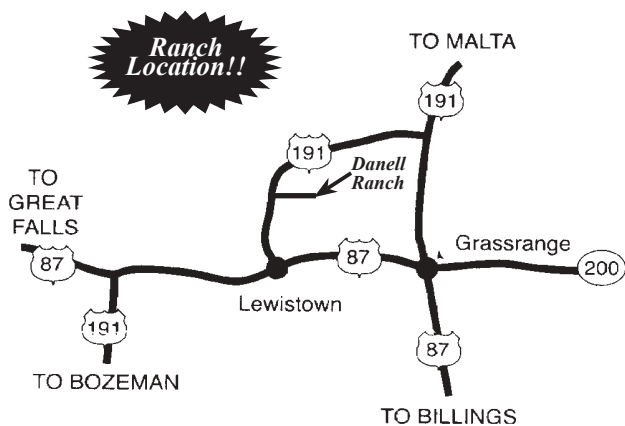
Go to www.BillPelton.com
Click on Sales.
Locate Danell Diamond Six Ranch and click to see pedigrees & videos.

RANCH LOCATION:

All sale cattle can be viewed at Danell Diamond Six Ranch.
1012 Maiden Road, Lewistown, Montana

FROM LEWISTOWN: 10 miles north of Lewistown on Highway 191, turn right on Maiden Road, 1st place on the right.

FROM HILGER: 6 miles south of Hilger on Highway 191, turn left onto Maiden Road, 1st place on the right.



SALE DAY PHONES:

(406) 366-6953..... Don Danell Cell
(406) 366-5803..... Teale Danell Cell
(406) 366-6833..... Omie Danell Cell

DELIVERY:

• **FREE DELIVERY** in Montana. Delivery not to exceed \$350 within United States.

VOLUME DISCOUNTS:

• **Volume Discount Purchases:**
5% on 5-9 bulls 10% on 10 or more bulls

CASH BACK:

• \$75 Cash Back on bulls picked up on or before April 5th

INSURANCE:

• Insurance is available through BillPelton.com and Danell Diamond Six will agree to pay for 50% of the cost. Insurance starts at 11% of the purchase price and covers the **FIRST FULL YEAR**. If you choose not to insure, we do guarantee a 60-day breeding season, starting at turnout.

LIABILITY

• All persons visiting the ranch do so at their own risk. The seller and/or sale management assume no liability, legal or otherwise, for any accidents occurring on or about the premises.

Danell Diamond Six Ranch Gelbvieh

EXPECT A LOT OF BULLY!



JOB Danell Top Pick 03M

DOB 2/08/24 • Tattoo 03M • Reg. No. 1593563
JOB Danell TD Chico Loco 28Y (ELK CK Crazy Horse 138P)

JOB Danell Top Shelf 38K ET

JOB Danell Josephine 33C (DLW New Frontier 33A ET)

Tehama Patriarch F028 (S S Niagara 229)

JOB Danell Patty 21K ET

JOB Danell Sally 23Y (JOB Danell Absolute 21U ET)

**Homo Polled
Homo Black
Balancer®75**

Act. BW

73

Adj. 205

717

Ratio

96

Adj. YW

1188

Ratio

96

ADG

3.2

Adj. SC

38.7

HOMOZYGOUS Polled, HOMOZYGOUS Black 75% Gelbvieh Balancer (heifer/cow) bull with a 73# birthweight (91 BW Ratio, 96 WW Ratio, 96 YW Ratio), a Tenderness score of 6, and a perfect 5/5 (heel height/claw structure) foot score!

DAM: JOB DANELL Patty 21K ET is a first calf heifer that was 79# at birth and had a 99 WW Ratio, 98 YW Ratio, 103 Ribeye Ratio, and 103 Marbling Ratio (5.049 IMF)! Her Donor Dam, JOB DANELL Sally 23Y, is a Purebred Gelbvieh Dam of Distinction and has a great set of performance ratios – 92 BW Ratio (78# avg on 10 calves), 104 WW Ratio on 10 calves, 103 YW Ratio on 8 calves, 109 Ribeye Ratio on 8 calves, and 87 IMF Ratio on 8 calves (that is an avg 3.63 IMF on those 8 calves – extremely impressive for a Purebred Gelbvieh Cow)! Sally is also the granddam of JOB DANELL Paygrade 68E – the sire of JOB DANELL Pay Pal 12H!

SIRE: JOB DANELL Top Shelf 38K ET is an AI Sire that roams the pastures of Dennis Gustin's Diamond D Gelbvieh of Mandan, ND. Top Shelf is a growth bull with exceptional carcass EPDs – he scanned a 13.92 ribeye and a 4.29 IMF and had a 39.7 yearling scrotal!

TOP PICK has a fine set of EPDs – Top 15% for BW, Top 30% for CEM, Top 2% for PG30, Top 5% for Stayability, Top 20% for Scrotal & YG, and Top 30% for Ribeye! The fact that he is 75% Gelbvieh lets you make great Purebreds and Balancers!

Adj REA	Adj FT	Adj IMF
13.93	0.41	3.072

CED	BW	WW	YW	Milk	TM	CEM	HP	PG30	ST	YG	CW	REA	MB	\$Cow	FPI	EPI
14	-2.5	64	98	23	56	8	7.18	3.57	19	-0.15	33	0.61	0.38		80.56	



JOB Danell Quicken 04M

DOB 2/8/24 • Tattoo 04M • Reg. No. 1593564
JOB Danell Paygrade 68E (BBDM Bolton Pay Day 45C)

JOB Danell Pay Pal 12H

JOB Danell Josephine 33C (DLW New Frontier 33A ET)

JOB Danell Pardner 07F (JOB Danell Rocko 51D)

JOB Danell Quiche 02K

JOB Danell Souffle 54H (JOB Danell Shaker 05F)

**Homo Polled
Homo Black
Balancer®67**

Act. BW

88

Adj. 205

736

Ratio

102

Adj. YW

1331

Ratio

104

ADG

3.8

Adj. SC

40.7

HOMOZYGOUS Polled, HOMOZYGOUS Black (and solid black) 67.2% Gelbvieh Balancer son of JOB DANELL Pay Pal 12H from a first calf heifer and he has an 88# birthweight (109 BW Ratio, 102 WW Ratio, 104 YW Ratio), a Tenderness score of 9, and a near perfect 5.5/5.5 (heel height/claw structure) foot score!

DAM: JOB DANELL Quiche 02K boasts some great EPDs across the board – Top 20% CED & WW, Top 10% YW & HP, Top 15% CEM, Top 2% Docility, Top 3% CW, Top 10% Marbling, and Top 5% FPI!

SIRE: JOB DANELL Pay Pal 12H has become one of the breed's most influential sires, producing progeny that absolutely GROW and carry his exceptional growth and carcass EPDs – Top 5% WW, YW, & PG30, Top 3% Milk, Top 2% TM, Top 10% HP & Scrotal, Top 4% CW, Top 20% Ribeye & FPI, Top 50% Marbling, and Top 35% EPI!

QUICKEN is a cow bull that has a 736# 205 weight (102 ratio) and a 1331# 365 weight (104 ratio)! This growth bull ranks Top 3% for WW, Top 4% for YW & TM, Top 25% for Milk, Top 5% for HP, Top 20% for PG30 & Scrotal, TOP 15% for Docility & YG, Top 2% for CW, Top 3% for Ribeye, and Top 20% for FPI! He is extremely long-made, good-footed, clean-sheathed, straight-backed, and travels well! If you don't own a Pay Pal son yet, this is one cow bull you should consider to put females in your replacement pen and steers that will weigh up!

Adj REA	Adj FT	Adj IMF
13.83	0.11	1.852

CED	BW	WW	YW	Milk	TM	CEM	HP	PG30	ST	YG	CW	REA	MB	\$Cow	FPI	EPI
10	2.9	92	146	26	72	7	11.97	2.35	3	-0.17	65	0.88	0.34		89.69	



Fall 202 4 American Gelbvieh Association Balancers® Non-Parent Average EPD's

CED	BW	WW	YW	Milk	TM	CEM	HP	PG30	ST	DOC	DMI	YG	CW	RE	MB	FAT	ADG	RFI	\$Cow	FPI	EPI
13	-0.4	72	112	23	59	7	6	1	15	12	0.016	-0.07	37	0.51	0.37	-0.01	0.000	-0.012	105.48	81.91	113.52

Danell Diamond Six Ranch Gelbvieh

Lot 3



JOB Danell Champ 13M

DOB 2/16/24 • Tattoo 13M • Reg. No. 1593607
 DLW TPG Fronrunner 2510F (DLW TPG Jackpot 7551B ET)
JKGF All American J109
 JKGF F109 ET (CCRO Carolina Leverage 3214A)
 JOB Danell Innovator 04D (MAR Innovation 251)
JOB Danell Tyra 82F
 JOB Danell Pageant 69C (JOB Danell A. J. 12A ET)

**Homo Polled
 Homo Black
 Balancer®62**

Act. BW	84
Adj. 205	674
Ratio	94
Adj. YW	1185
Ratio	92
ADG	3.6
Adj. SC	37.6

HOMOZYGOUS Polled, HOMOZYGOUS Black (and solid black) 62.3% Gelbvieh Balancer bull with an 84# birthweight (98 BW Ratio and 94 WW Ratio), a Tenderness score of 7, and a near perfect 5.5/5.5 (heel height/claw structure) foot score!

DAM: JOB DANELL Tyra 82F is one of my favorite cows – always bringing in a keeper! We have kept both of her female calves – JOB DANELL Tippy 36L is a 1st calf heifer this year and JOB DANELL Heidi 08H is a daughter that has raised 2 bull calves, JOB Goose 26L sold in last year's bull sale for \$8000 and JOB DANELL Groot 15M will sell in this year's sale as Lot 5!

SIRE: JKGF All American J109 is one of the most popular new Purebred Gelbvieh AI Sires and we sure are happy with our first group of his progeny! He has a great set of EPDs – Top 30% BW & Stayability, Top 10% WW & HP, Top 2% YW, Top 25% PG30, Top 15% DMI, Top 25% YG, Top 5% Ribeye, Top 2% Marbling, Top 35% ADG, Top 20% \$COW, and Top 10% EPI!

CHAMP is a thick made, moderate framed, good footed bull calf with ultrasound measurements of 13.45 Ribeye and 3.083 IMF – this bull will catch your eye!

Adj REA	Adj FT	Adj IMF
13.45	0.30	3.083

CED	BW	WW	YW	Milk	TM	CEM	HP	PG30	ST	YG	CW	REA	MB	\$Cow	FPI	EPI
12	-1.7	72	121	19	55	8	12.55	1.53	18	-0.08	25	0.50	0.45		85.41	



Lot 4



JOB Danell On Point 14M

DOB 2/16/24 • Tattoo 14M • Reg. No. 1593608
 JOB Danell Paygrade 68E (BBDM Bolton Pay Day 45C)
JOB Danell Pay Pal 12H
 JOB Danell Josephine 33C (DLW New Frontier 33A ET)
 JOB Danell Torrid 40G (JOB Danell Toro 31A)
JOB Danell Laser 25J
 KHR Focus 231Z (A A R Ten X 7008 S A)

**Homo Polled
 Homo Black
 Balancer®71**

Act. BW	88
Adj. 205	798
Ratio	107
Adj. YW	1321
Ratio	107
ADG	3.5
Adj. SC	44.4

HOMOZYGOUS Polled, HOMOZYGOUS Black (and solid black) 71.9% Gelbvieh Balancer cow bull with an 88# birthweight (108 BW Ratio), 798# 205-weight (107 WW Ratio - #1 in his contemporary group), 1321# 365-weight (107 YW Ratio - #2 in his contemporary group), a 9 for Tenderness, and a near perfect 5.5/5.5 (heel height/claw structure) foot score!

DAM: JOB DANELL Laser 25J is a young cow that has given us two outstanding JOB Danell Pay Pal 12H calves – JOB DANELL On Point 14M and JOB DANELL Hi-Lite 12L (a bred heifer we sold in our fall female sale)! Laser is out of KHR Focus 231Z, a Dam of Distinction with quite the performance record – 100 BW Ratio on 8 calves, 111 WW Ratio on 8 calves, 107 YW Ratio on 6 calves, 98 Ribeye Ratio on 5 calves, and 105 Marbling Ratio on 5 calves!

SIRE: JOB DANELL Pay Pal 12H was our all-time high selling bull at our 2021 sale for \$33,000 and truly is one of the best bulls we have ever raised/used! If you don't have any progeny from him in your program, you really should consider getting your hands on one of these sons! You will be adding weight to your calves, keepers for your heifer pen and steers that will weigh up!

ON POINT is a phenomenal looking bull! He stands on sound feet and has a big hip, wide top, and an easy-going disposition! Again, he is a cow bull with some great growth EPDs – Top 15% for WW, YW, & Milk, Top 10% for TM, Top 30% for CEM & Scrotal, Top 20% for HP, Top 5% for PG30, Top 30% for YG, Ribeye, & FPI, and above average Marbling with a 9 for Tenderness! I realize Tenderness has not been on the radar for many breeders, but we have put it all together for you in this bull! He will add growth, milk, HP, PG30, carcass traits, and tenderness to Purebreds or Balancers!

Adj REA	Adj FT	Adj IMF
12.35	0.28	2.701

CED	BW	WW	YW	Milk	TM	CEM	HP	PG30	ST	YG	CW	REA	MB	\$Cow	FPI	EPI
11	1.4	83	134	28	70	8	8.57	2.55	13	-0.12	40	0.63	0.39		87.60	



Fall 2023 American Gelbvieh Association Non-Parent Gelbvieh Average EPD's

CED	BW	WW	YW	Milk	TM	CEM	HP	PG30	ST	DOC	DMI	YG	CW	RE	MB	FAT	ADG	RFI	\$Cow	FPI	EPI
13	0.1	69	103	23	58	6	7	1	16	12	0.004	-0.23	28	0.66	0.20	-0.04	-0.042	-0.004	113.40	75.99	79.00

Danell Diamond Six Ranch Gelbvieh

EXPECT A LOT OF BULLY!

Lot 5



JOB Danell Groot 15M

DOB 2/17/24 • Tattoo 15M • Reg. No. 1593609
 DLW TPG Frontrunner 2510F (DLW TPG Jackpot 7551B ET)
JKGF All American J109
 JKGF F109 ET (CCRO Carolina Leverage 3214A)
 JOB Danell Pardner 07F (JOB Danell Rocko 51D)
JOB Danell Heidi 08H
 JOB Danell Tyra 82F (JOB Danell Innovator 04D)

**Homo Polled
 Black
 Balancer®74**

Act. BW	88
Adj. 205	764
Ratio	106
Adj. YW	1348
Ratio	105
ADG	3.6
Adj. SC	40.1

HOMOZYGOUS Polled, Black (with some white at navel) 74.9% Gelbvieh Balancer cow bull with an 88# birthweight (104 BW Ratio, 106 WW Ratio, and 105 YW Ratio), a 4 for Tenderness, and a perfect 5/5 (heel height/claw structure) foot score!

DAM: JOB DANELL Heidi 08H, mentioned in the description of Lot 3, is a young mama that just keeps bringing in the great ones – and Groot is no exception! She boasts a 101 BW Ratio on 3 calves, 102 WW Ratio on 3 calves, 106 YW Ratio on 2, 102 Ribeye Ratio on 2, and 95 Marbling Ratio on 2!

SIRE: JKGF All American J109 is a new AI sire to our program and I believe you will like his sons that we are offering in this sale. We retained all three of the bull calves we produced from this sire, which is quite an accomplishment in any program!

GROOT is quite the calf – big hipped, wide topped, big spring of rib, long made, and very eye appealing! His set of EPDs is amazing – Top 10% for WW, Top 3% for YW & HP, Top 30% for TM, Docility, & Scrotal, Top 20% for PG30, Top 25% for CW, and Top 15% for Ribeye & FPI! DNA testing has shown Groot's color testing to be EDE+ which is defined as "Typically Black Hided, Wild Type" meaning - dominantly black, wild type carrier – his calves will typically be black with some being homozygous black and some being black with the wild type color gene. He does have a small amount of white near his navel. Groot will put good replacement females in your program and steer calves to add to your profits. What a beef machine – if he didn't have white on his sheath, I think this bull would be going into a Purebred herd!

Adj REA	Adj FT	Adj IMF
15.10	0.36	2.782

CED	BW	WW	YW	Milk	TM	CEM	HP	PG30	ST	YG	CW	REA	MB	\$Cow	FPI	EPI
12	-0.4	87	149	20	64	7	12.91	2.26	14	-0.09	47	0.74	0.42		92.87	



Lot 6



JOB Danell Am. Idol 19M

DOB 2/18/24 • Tattoo 19M • Reg. No. 1593613
 DLW TPG Frontrunner 2510F (DLW TPG Jackpot 7551B ET)
JKGF All American J109
 JKGF F109 ET (CCRO Carolina Leverage 3214A)
 JOB Danell Napoleon 01E (BBDM Molton Pay Day 45C)
JOB Danell Cutie 20G
 JOB Danell Orange Blossom 35B (JOB Danell TD Chico Loco 28Y)

**Homo Polled
 Homo Black
 Purebred99**

Act. BW	78
Adj. 205	728
Ratio	98
Adj. YW	1140
Ratio	92
ADG	2.8
Adj. SC	34.7

HOMOZYGOUS Polled, HOMOZYGOUS Black (and solid black) 99.9% Purebred Gelbvieh (heifer/cow) bull with a 78# birthweight (93 BW Ratio and 98 WW Ratio), a 3 for Tenderness, and a near perfect 5.5/5.5 (heel height/claw structure) foot score! Heifer and Cow bull!

DAM: JOB DANELL Cutie 20G is a Purebred in our herd and we always look forward to her calves! Her dam, JOB DANELL Orange Blossom 35B, is an 11-year-old Dam of Distinction that is still in production! Cutie's sire, JOB DANELL Napoleon 01E, is a Purebred Gelbvieh AI Sire out of JOB DANELL Josephine 33C (also Pay Pal's dam)!

SIRE: JKGF All American J109 did it again – siring this outstanding Purebred bull that will boost your program as a bull for heifers and/or cows!

AM. IDOL has great potential, as a 99.9% Purebred Gelbvieh, to be a future AI Sire. He is moderate framed, great footed, big hipped, and smooth walking with great eye appeal! He has great EPDS across the board – Top 15% BW & HP, Top 35% CEM, Top 10% PG30, Top 30% Stayability, Top 15% YG & Ribeye, Top 5% Marbling (as a Purebred Gelbvieh!), Top 30% \$COW, and Top 10% FPI! With ultrasound measurements of 15.33 Ribeye (106 ratio) and 4.592 IMF (126 ratio), this bull puts it all together for you breeders looking for the Purebred Gelbvieh (Heifer & Cow) bull!

Adj REA	Adj FT	Adj IMF
15.33	0.41	4.592

CED	BW	WW	YW	Milk	TM	CEM	HP	PG30	ST	YG	CW	REA	MB	\$Cow	FPI	EPI
13	-1.6	71	110	22	58	7	11.16	3.26	17	-0.30	20	0.87	0.67	129.21	86.53	81.00



Fall 202 4 American Gelbvieh Association Balancers® Non-Parent Average EPD's

CED	BW	WW	YW	Milk	TM	CEM	HP	PG30	ST	DOC	DMI	YG	CW	RE	MB	FAT	ADG	RFI	\$Cow	FPI	EPI
13	-0.4	72	112	23	59	7	6	1	15	12	0.016	-0.07	37	0.51	0.37	-0.01	0.000	-0.012	105.48	81.91	113.52

Danell Diamond Six Ranch Gelbvieh

Lot 7



JOB Danell Kong 21M

DOB 2/19/24 • Tattoo 21M • Reg. No. 1593634

TJB Rebel Yell 804F ET (JRI Probita 254D28)

BARG Go Time 781J

BARG Sophia 781E (BDCG DC Crossbow 401C ET)

JOB Danell Paygrade 68E (BBDM Bolton Pay Day 45C)

JOB Danell Mandarin 55G

JOB Danell Mandy B. 48Z (SDCG X-Factor 202X)

**Homo Polled
Homo Black
Balancer®49**

Act. BW

88

Adj. 205

708

Ratio

98

Adj. YW

1168

Ratio

91

ADG

2.9

Adj. SC

40.7

HOMOZYGOUS Polled, HOMOZYGOUS Black (and solid black) 49.9% Gelbvieh Balancer bull with an 88# birthweight (103 BW Ratio) and 708# 205-weight (98 WW Ratio), a Tenderness score of 8, and a near perfect 5.5/5.5 (heel height/claw structure) foot score!

DAM: JOB DANELL Mandarin 55G is a favorite for many reasons – a calm disposition, a perfect udder, a moderate frame, and good feet, and always brings in a good one, and is a Dam of Merit! This 6-year-old dam has a 92 BW Ratio on 4 calves, 100 WW Ratio on 4 calves, 102 YW Ratio on 2, 102 Ribeye Ratio on 2, and 91 Marbling Ratio on 2! Unfortunately, her 1st calf - JOB DANELL Clementine 07J - was not ratioed for yearling or ultrasound because our heifers were being fed a long way from home. Clementine happens to be the dam of JOB DANELL Forty Niner 62M – Lot 15 in this sale – a real eye opener and probably one of the best young females we own!

SIRE: BARG Go Time 781J is a Gelbvieh Balancer Bull Futurity winner at the National Gelbvieh Convention – voted on by members of the Futurity! I have not used many of the winners, but Go Time had good EPDs for CED, CEM, Milk, WW, YW, HP, PG30, SC, and carcass traits and the style that made me want to use him! We have been pleased with calves from these matings, most of the females being retained in the herd and the bull calves performing well and doing well in the sale!

KONG is a larger framed, long-made, sound-footed, cow bull with good EPDs – Top 35% for WW, Top 25% for Milk & TM, Top 15% for HP, Top 5% for PG30, Top 3% for Stayability, Top 10% for Scrotal, Top 40% for CW & FPI, and Top 35% for Marbling! Kong offers fertility, growth, milk, udder improvement, and comes with a Tenderness score of 8 and an ultrasound Ribeye measurement of 15.16 (104 ratio)! He is a cow bull that will put replacement heifers in your pen with maternal and carcass value you cannot find just anywhere while adding extra length and weight to your calves!

Adj REA	Adj FT	Adj IMF
15.16	0.22	2.205

CED	BW	WW	YW	Milk	TM	CEM	HP	PG30	ST	YG	CW	REA	MB	\$Cow	FPI	EPI
11	0.7	77	115	26	65	4	9.64	3.35	20	-0.03	40	0.53	0.43		84.63	



Lot 8



JOB Danell Maga 22M

DOB 2/19/24 • Tattoo 22M • Reg. No. 1593635

DLW TPG Frontrunner 2510F (DLW TPG Jackpot 7551B ET)

JKGF All American J109

JKGF F109 ET (CCRO Carolina Leverage 3214A)

JOB Danell Paygrade 68E (BBDM Bolton Pay Day 45C)

JOB Danell Ashley 33H

JOB Danell Josie 32B (JOB Danell TD Chico Loco 28Y)

**Homo Polled
Homo Black
Purebred92**

Act. BW

87

Adj. 205

798

Ratio

107

Adj. YW

1355

Ratio

110

ADG

3.5

Adj. SC

39.1

HOMOZYGOUS Polled, HOMOZYGOUS Black (and solid black) 92.2% Purebred Gelbvieh cow bull with an 87# birthweight (104 BW Ratio, 107 WW Ratio, and 110 YW Ratio - #1 in his contemporary group), a 3 for Tenderness, and a 5.5/6 foot score – a definite herd sire prospect!

DAM: JOB DANELL Ashley 33H is a 5-year-old dam that is another rising star in our program. She raised a Purebred that sold for \$6500 in our last year's bull sale and I expect this calf to top that! She has a 96 BW Ratio on 3 calves, 101 WW Ratio on 3 calves, 104 YW Ratio on 2, 103 Ribeye Ratio on 2! We liked MAGA so much as a calf that Ashley is bred back to All American to calve this year!

SIRE: JKGF All American J109 is also the sire of Lots 3, 5, and 6 and, as you can see, he has put some of the best bulls in this sale and his heifers are exciting as well! His offspring have great eye appeal and excellent feet – a breed improving bloodline that you would do well to add into your program!

MAGA is a beef machine! His EPDs are second to none – Top 40% for BW & Scrotal, Top 10% for WW, YW, HP, & PG30, Top 30% TM, Top 3% for YG, Top 10% for CW & FPI, Top 1% for Ribeye, and Top 35% for Marbling & EPI! Wow!! Showing a great spread from birthweight to growth, with breed-back EPDs in the Top 10% and carcass traits that are impeccable! To top it off – ultrasound measurements of 15.26 Ribeye (106 ratio) and 2.935 IMF with a minimal 84 Fat Thickness ratio! This bull is long-made on a 6 to 6.5 frame, easy-moving with a huge hip, wide top, good spring of rib, big scrotal, great foot structure, and a great disposition!

Adj REA	Adj FT	Adj IMF
15.26	0.28	2.935

CED	BW	WW	YW	Milk	TM	CEM	HP	PG30	ST	YG	CW	REA	MB	\$Cow	FPI	EPI
12	-0.3	84	128	20	62	6	11.56	3.47	12	-0.36	43	1.19	0.26	105.70	87.10	98.08



Fall 2023 American Gelbvieh Association Non-Parent Gelbvieh Average EPD's

CED	BW	WW	YW	Milk	TM	CEM	HP	PG30	ST	DOC	DMI	YG	CW	RE	MB	FAT	ADG	RFI	\$Cow	FPI	EPI
13	0.1	69	103	23	58	6	7	1	16	12	0.004	-0.23	28	0.66	0.20	-0.04	-0.042	-0.004	113.40	75.99	79.00

Danell Diamond Six Ranch Gelbvieh

EXPECT A LOT OF BULLY!

Lot 9



JOB Danell Harley 24M

DOB 2/19/24 • Tattoo 24M • Reg. No. 1593637
 JOB Danell Bogart 67H (JOB Danell Phoenix 15F)
JOB Danell Kickstart 65K
 JOB Danell Butterfly 53G (JOB Danell Innovator 04D)
 JOB Danell A. J. 12A ET (A A R Ten X 7008 S A)
JOB Danell Danielle 67E
 JOB Danell Dandy 48A (JOB Danell Fortunate 47Y)

**Homo Polled
 Homo Black
 Balancer®34**

Act. BW	91
Adj. 205	690
Ratio	96
Adj. YW	1227
Ratio	96
ADG	3.8
Adj. SC	40.7

HOMOZYGOUS Polled, HOMOZYGOUS Black (and solid black) 34.2% Gelbvieh Balancer cow bull with a 91# birthweight, a Tenderness of 9 or 10, and a 6/6 foot score!

DAM: JOB DANELL Danielle 67E is a beautiful 8-year-old female with a BW Ratio of 95 on 5 calves, WW Ratio 98 on 5 calves, YW Ratio 101 on 3 calves, Ribeye Ratio 104 on 3 calves, IMF Ratio 109 on 3, and her DNA scores a 10 for Tenderness! Danielle's EPDs are - Top 4% for CED, Top 10% for BW, Top 3% for CEM, Top 30% for HP, Top 25% for PG30, Top 10% for Marbling, and Top 30% for FPI!

SIRE: JOB DANELL Kickstart 65K is an exciting new AI Sire we used heavily and we are happy with the results! Kickstart is a good-footed easy calver with great CE, BW, CEM, and a set of carcass EPDs that are second to none and those carcass traits carry on to his calves! Kickstart is also a 9 for Tenderness!

HARLEY is a great example of carrying on Kickstart's carcass traits and has a strong set of EPDs with great CED, CEM, and BW with good Milk and a very strong set of carcass EPDs that are backed up by ultrasound measurements of 15.36 Ribeye (105 ratio) and 4.030 IMF (131 ratio)! These carcass traits are a large part of the reasons we used Kickstart in our program along with his style and calving ease!

Adj REA	Adj FT	Adj IMF
15.36	0.18	4.030

CED	BW	WW	YW	Milk	TM	CEM	HP	PG30	ST	YG	CW	REA	MB	\$Cow	FPI	EPI
14	-1.0	62	106	22	53	9	6.97	1.66	12	-0.07	28	0.50	0.66		84.77	



Lot 10



JOB Danell Bullet Train 27M

DOB 2/21/24 • Tattoo 27M • Reg. No. 1593640
 EXAR Stallion 7986 (EXAR Stud 4658B)
BIGK/WSC Iron Horse 025F
 EXAR Henrietta Pride 5702 (Sandpoint Butkus X797)
 Plattmere Weigh Up K360 (Sitz Upward 307R)
JOB Danell Lulu 210F
 JOB Danell Cindy Lou 2U (JOB Danell Montana Infusion)

**Homo Polled
 Homo Black
 Balancer®12**

Act. BW	94
Adj. 205	745
Ratio	104
Adj. YW	1331
Ratio	104
ADG	3.8
Adj. SC	37.3

HOMOZYGOUS Polled, HOMOZYGOUS Black (and solid black) 12.5% Gelbvieh cow bull with a 94# birthweight, a 745# 205-weight (104 ratio), and a 1331# 365-weight (104 ratio), a Tenderness score of 5, and a 5.5/6 foot score!

DAM: JOB DANELL Lulu 210F is sired by Plattmere Weigh Up K360, a Purebred Angus AI Sire. She is a female that has given us 4 of 5 calves from AI breeding, calving consistently between the 15th and 21st of February - and she measured a 4.7 IMF (145 Ratio)!

SIRE: BIGK/WSC Iron Horse 025F is a Purebred Angus AI Sire used because of his calving ease, high growth, and docility and he has EPDs for WW, YW, TM, CEM, CW, & FPI in the Top 1% and Marbling in the TOP 3%!

BULLET TRAIN also has admirable EPDs - Top 1% for WW & YW, Top 2% for TM & CW, Top 10% for Marbling, Top 1% for FPI with ultrasound measurements of 14.51 Ribeye (99 ratio), 3.538 IMF (115 ratio), and minimal 0.17 FT (70 ratio) backing up those EPDs! If you are looking for a long-made, high percentage (88%) outcross Angus bull that will add carcass & growth, Bullet Train is the cow bull you are looking for!

Adj REA	Adj FT	Adj IMF
14.51	0.17	3.538

CED	BW	WW	YW	Milk	TM	CEM	HP	PG30	ST	YG	CW	REA	MB	\$Cow	FPI	EPI
11	2.3	101	171	22	73	6	7.16	0.26	10	-0.02	66	0.71	0.62		102.55	



Fall 2024 American Gelbvieh Association Balancers® Non-Parent Average EPD's

CED	BW	WW	YW	Milk	TM	CEM	HP	PG30	ST	DOC	DMI	YG	CW	RE	MB	FAT	ADG	RFI	\$Cow	FPI	EPI
13	-0.4	72	112	23	59	7	6	1	15	12	0.016	-0.07	37	0.51	0.37	-0.01	0.000	-0.012	105.48	81.91	113.52

Danell Diamond Six Ranch Gelbvieh

Lot 11



JOB Danell Top Gun 45M

DOB 2/28/24 • Tattoo 45M • Reg. No. 1593813
 JOB Danell TD Chico Loco 28Y (ELK CK Crazy Horse 138P)
JOB Danell Top Shelf 38K ET
 JOB Danell Josephine 33C (DLW New Frontier 33A ET)
 BBDM Bolton Pay Day 45C (JOB Danell Joey 7A)
JOB Danell Nessie 78E
 JOB Danell Governess 48B (OZZ EXT Governor 3N)

**Homo Polled
 Homo Black
 Purebred84**

Act. BW	84
Adj. 205	775
Ratio	104
Adj. YW	1185
Ratio	96
ADG	3.0
Adj. SC	37.5

HOMOZYGOUS Polled, HOMOZYGOUS Black (and solid black) 84.4% Purebred Gelbvieh cow bull with an 84# birthweight (99 BW Ratio and 104 WW Ratio), a Tenderness of 6, and a perfect 5/5 (heel height/claw structure) foot score – a definite herdsire prospect!

DAM: JOB DANELL Nessie 78E is another favorite female and she has given us no females, but 5 bull calves (including this one) and 4 of them have made it to our bull sale! Maybe one day she will give us a female like herself – she has a great udder and sound feet along with a decent set of EPDs, with Milk in the Top 15%! 96 BW Ratio on 5 calves, 104 WW Ratio on 5 calves, 98 YW Ratio on 4 calves, 105 Ribeye Ratio on 4 calves, and 124 Marbling Ratio on 4 calves!

SIRE: JOB DANELL Top Shelf 38K ET is a sire that will add growth and carcass traits to your program! He is an ET calf from the dam of JOB DANELL Pay Pal 12H and one of my favorite Herdsires, JOB DANELL TD Chico Loco 28Y! Top Shelf has a 114 IMF ratio on 11 calves (from 3 different herds) – WOW! He also scored a perfect 5/5 foot score and both his calves in this sale scored perfect 5/5 foot scores, as well!

TOP GUN is a cow bull with EPDs of Top 40% for WW, YW, & Scrotal, Top 30% for Milk & TM, Top 2% for PG30, Top 15% for Marbling, Top 25% for FPI, and ultrasound measurements of 14.63 Ribeye (101 ratio) and an incredible 5.284 IMF (145 ratio)! He is easy to work with, and thick and long with a straight back, big hip, and big scrotal on about a 6 frame with sound feet and he will be an asset to your program, whether Purebred or Commercial! We will collect this great calf for in herd use before he leaves the ranch – this is how we increase marbling in our purebreds and continue to maintain and improve the important trait of sound feet in our herd and yours!

Adj REA	Adj FT	Adj IMF
14.63	0.38	5.284

CED	BW	WW	YW	Milk	TM	CEM	HP	PG30	ST	YG	CW	REA	MB	\$Cow	FPI	EPI
12	0.6	73	110	25	62	6	4.19	3.77	16	-0.20	12	0.39	0.54		81.95	



Lot 12



JOB Danell Starter 49M

DOB 3/1/24 • Tattoo 49M • Reg. No. 1593817
 JOB Danell Bogart 67H (JOB Danell Phoenix 15F)
JOB Danell Kickstart 65K
 JOB Danell Butterfly 53G (JOB Danell Innovator 04D)
 Plattemere Weigh Up K360 (Sitz Upward 307R)
JOB Danell Glitter 17G
 JOB Danell Twinkles 21X (FHG Flying H Exclusive)

**Homo Polled
 Homo Black
 Balancer®39**

Act. BW	85
Adj. 205	673
Ratio	90
Adj. YW	1227
Ratio	99
ADG	3.8
Adj. SC	40.1

HOMOZYGOUS Polled, HOMOZYGOUS Black 39.1% Gelbvieh Balancer cow bull with an 85# birthweight and a near perfect 5.5/5.5 (heel height/claw structure) foot score!

DAM: JOB DANELL Glitter 17G is a 6-year-old Dam of Merit that has only given us bull calves – all of which have made it to the bull pen! We decided to use her last year's bull calf, JOB DANELL Sparks 71L, with his ultrasound Marbling measurement of 5.2 (182 Ratio), Ribeye of 14.03 (99 Ratio), and Tenderness score of 8 with exceptional CED, CEM, growth, and milk, as clean-up bull for our heifer pen with an AI permit! Glitter has a beautiful udder and a calm disposition!

SIRE: JOB DANELL Kickstart 65K was used in our program because of his calving ease, CEM, Docility, & exceptional carcass traits, style, fluid motion, disposition, and his beautifully uddered dam, JOB DANELL Butterfly 53G, also with exceptional carcass traits (6.08 IMF) that she passes on to her offspring!

STARTER is a cow bull with calving ease, growth, Milk, CEM, HP, PG30, carcass traits, and ultrasound measurements of 14.90 Ribeye and 3.281 IMF! He is moderate framed, big hipped, and easy going with good feet and structure from an exceptional mama – take him home!

Adj REA	Adj FT	Adj IMF
14.90	0.24	3.281

CED	BW	WW	YW	Milk	TM	CEM	HP	PG30	ST	YG	CW	REA	MB	\$Cow	FPI	EPI
14	-0.9	66	114	21	54	9	9.10	1.49	14	-0.12	33	0.58	0.57		85.26	



Fall 2023 American Gelbvieh Association Non-Parent Gelbvieh Average EPD's

CED	BW	WW	YW	Milk	TM	CEM	HP	PG30	ST	DOC	DMI	YG	CW	RE	MB	FAT	ADG	RFI	\$Cow	FPI	EPI
13	0.1	69	103	23	58	6	7	1	16	12	0.004	-0.23	28	0.66	0.20	-0.04	-0.042	-0.004	113.40	75.99	79.00

Danell Diamond Six Ranch Gelbvieh

Lot 13



JOB Danell Chromium 55M

DOB 3/14/24 • Tattoo 55M • Reg. No. 1595367

JOB Danell Pay Pal 12H (JOB Danell Paygrade 68E)

JOB Danell Jocko 41K

JOB Danell Jocelyn 13F (JOB Danell Grand Slam 23D)

Tehama Patriarch F028 (S S Niagara Z29)

JOB Danell Shiny 29K

JOB Danell Moon Ray 63F (DLW New Frontier 33A ET)

**Homo Polled
Homo Black
Balancer®71**

Act. BW

83

Adj. 205

726

Ratio

101

Adj. YW

1274

Ratio

99

ADG

3.6

Adj. SC

42.3

HOMOZYGOUS Polled, HOMOZYGOUS Black 71.5% Gelbvieh Balancer bull with an 83# birthweight, Tenderness score of 3, and a near perfect 5.5/5 (heel height/claw structure) foot score!

DAM: JOB DANELL Shiny 29K is a beautifully uddered 1st calf heifer that has lived up to my excitement about the Tehama Patriarch F028 daughters that have been performing so well for us in our herd!

SIRE: JOB DANELL Jocko 41K is a JOB DANELL Pay Pal 12H son we used on a few cows and had a couple of Top performers including this fine son!

CHROMIUM's performance started with an 83# birthweight (103 ratio), 726# 205-weight (101 ratio), and 1274# 365-weight (99 ratio)! He is a cow bull with a great set of EPDs – Top 25% WW, Top 15% YW & Docility, Top 35% Milk, Top 20% TM, Top 30% CEM & SC, Top 2% PG30, Top 30% YG, Top 15% CW, Top 20% Ribeye & FPI, and Top 10% Marbling! Chromium is on a larger frame with length, a good spring of rib, and a large scrotal measurement – this cow bull is worth taking a look at!

Adj REA	Adj FT	Adj IMF
12.52	0.20	2.895

CED	BW	WW	YW	Milk	TM	CEM	HP	PG30	ST	YG	CW	REA	MB	\$Cow	FPI	EPI
11	1.3	80	133	25	66	8	6.42	3.82	14	-0.12	52	0.74	0.59		90.60	



Lot 14



JOB Danell Sale Day 58M

DOB 3/16/24 • Tattoo 58M • Reg. No. 1595370

JOB Danell Bogart 67H (JOB Danell Phoenix 15F)

JOB Danell Kickstart 65K

JOB Danell Butterfly 53G (JOB Danell Innovator 04D)

WernerFlat Top 4136 (Connealy Black Granite)

JOB Danell Dainty 27H

JOB Danell Danielle 67E (JOB Danell A. J. 12A ET)

**Homo Polled
Homo Black
Balancer®25**

Act. BW

80

Adj. 205

717

Ratio

96

Adj. YW

1221

Ratio

99

ADG

3.4

Adj. SC

39.0

HOMOZYGOUS Polled, HOMOZYGOUS Black (and solid black) 25.7% Gelbvieh Balancer (heifer/cow) bull with an 80# birthweight, 1221# 365-weight, and a 5.5/6 foot score!

DAM: JOB DANELL Dainty 27H is a beautifully uddered and good footed 5-year-old female on a moderate frame! She had a 70# birthweight (87 Ratio), 99 WW Ratio, 107 YW Ratio, 111 Ribeye Ratio, and 115 Marbling Ratio – the type of cow that stays in your herd!

SIRE: JOB DANELL Kickstart 65K is a calving ease sire with moderate growth and incredible carcass statistics with a good disposition! We used him again in our 2024 AI program!

SALE DAY started with an 80# birthweight and has a 717# weaning weight and ultrasound measurements of 14.65 Ribeye and 3.618 IMF and a minimal .32 FT (97 ratio)! With a Marbling EPD in the Top 5%, Top 15% CED, BW, & CEM, PG30 Top 20%, HP Top 30%, and FPI Top 25% - I feel these Kickstart calves will help any program with calving ease, growth, and proven carcass traits!

Adj REA	Adj FT	Adj IMF
14.65	0.32	3.618

CED	BW	WW	YW	Milk	TM	CEM	HP	PG30	ST	YG	CW	REA	MB	\$Cow	FPI	EPI
16	-2.4	62	111	23	54	9	8.50	2.12	13	-0.06	35	0.58	0.69		88.11	



Fall 202 4 American Gelbvieh Association Balancers® Non-Parent Average EPD's

CED	BW	WW	YW	Milk	TM	CEM	HP	PG30	ST	DOC	DMI	YG	CW	RE	MB	FAT	ADG	RFI	\$Cow	FPI	EPI
13	-0.4	72	112	23	59	7	6	1	15	12	0.016	-0.07	37	0.51	0.37	-0.01	0.000	-0.012	105.48	81.91	113.52

EXPECT A LOT OF BULLY!

Danell Diamond Six Ranch Gelbvieh

Lot 15



JOB Danell Forty Niner 62M

DOB 4/1/24 • Tattoo 62M • Reg. No. 1596727
 JOB Danell Bogart 67H (JOB Danell Phoenix 15F)
JOB Danell Kickstart 65K
 JOB Danell Butterfly 53G (JOB Danell Innovator 04D)
 Tehama Patriarch F028 (S S Niagara Z29)
JOB Danell Clementine 07J
 JOB Danell Mandarin 58G (JOB Danell Paygrade 68E)

Homo Polled Homo Black Balancer®29

are Top 50% or better – an unusual balance across the board! Let's top that off with a 75# birthweight (92 ratio), a 777# 205-weight (108 ratio), and a whopping 1385# 365-weight (108 ratio), a Tenderness score of 10, and ultrasound measurements of 16.94 Ribeye (116 ratio) and 4.256 IMF (138 ratio)! He is smooth-made, moderate-framed, straight-backed, big hipped, wide topped, good footed, clean sheathed, and has a smooth tail head and good neck extension and his dam & granddam both have beautiful udders and his granddam is a Dam of Merit that is still in production! Forty Niner is a bull that will work anywhere – heifers & cows, registered & commercial, and in my herd! He has outcross genetics and a promising future! Forty Niner is truly a bull that puts it all together - we will collect semen from this bull for in-herd use before he leaves the ranch (if he leaves the ranch)!

Act. BW	75
Adj. 205	777
Ratio	108
Adj. YW	1385
Ratio	108
ADG	4.1
Adj. SC	38.9

HOMOZYGOUS Polled, HOMOZYGOUS Black (and solid Black) 29.5% Gelbvieh Balancer (heifer/cow) bull with a 75# birthweight (92 BW Ratio, 108 WW Ratio, 108 YW Ratio), a Tenderness score of 10, and a 6/5.5 foot score!

DAM: JOB DANELL Clementine 07J is a future star for our program! She is sired by Tehama Patriarch F028, the producer of some of the best replacement females we have ever produced from any of the many Angus sires we have used through the years! Clementine is a fine example – she is good footed, beautifully uddered, and has a calm disposition! She has a 94 BW Ratio on 2 calves, 108 WW Ratio on 2 calves, 108 YW Ratio on 2, 115 Ribeye Ratio on 2, and 114 Marbling Ratio on 2! We offered our bred heifers for sale this past fall and Clementine's first calf, JOB DANELL Cleo 08L, topped that sale at \$6100! Clementine is definitely earning her way toward our Donor program!

SIRE: JOB DANELL Kickstart 65K, who now resides at Robinson Gelbvieh in Kentucky, is a bull we used with great enthusiasm in our program – and we are happy we did! Many of the bred heifers we sold in our fall sale were bred to Kickstart and we expect those buyers to report very good results this spring as we did with the Kickstart-bred heifers we calved here! Kickstart semen is available for sale at Bull Barn Genetics. He has great calving ease, moderate growth, and extremely good carcass data with a 9 for Tenderness and his performance supports his growth and carcass traits!

FORTY NINER's own bragging rights include Top 25% for CED, Top 15% for BW, Top 30% for YW, Top 20% for Milk, Top 35% for TM, Top 10% for CEM, Top 5% for PG30, Top 30% for YG & CW, Top 10% for Ribeye & FPI, and Top 3% for Marbling! In fact – 16 of the 18 EPD stats reported

Adj REA	Adj FT	Adj IMF
16.94	0.40	4.256

CED	BW	WW	YW	Milk	TM	CEM	HP	PG30	ST	YG	CW	REA	MB	\$Cow	FPI	EPI
15	-2.4	72	122	27	63	10	7.06	2.84	15	-0.12	44	0.77	0.75		95.50	



JOB-DANELL-KICKSTART-65K

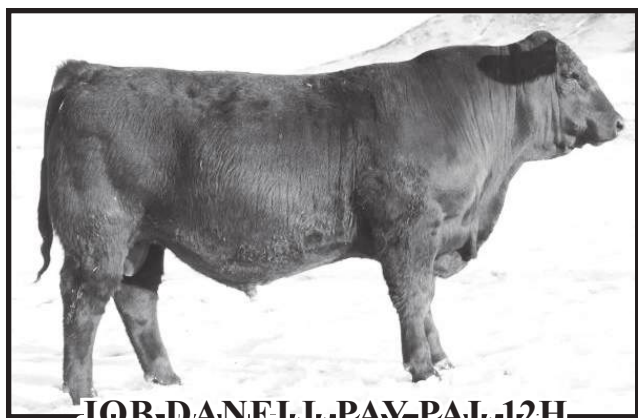
Fall 2023 American Gelbvieh Association Non-Parent Gelbvieh Average EPD's

CED	BW	WW	YW	Milk	TM	CEM	HP	PG30	ST	DOC	DMI	YG	CW	RE	MB	FAT	ADG	RFI	\$Cow	FPI	EPI
13	0.1	69	103	23	58	6	7	1	16	12	0.004	-0.23	28	0.66	0.20	-0.04	-0.042	-0.004	113.40	75.99	79.00

QUALITY GELBIEH & BALANCER® GENETICS THAT HAVE STOOD THE TEST OF TIME

EXPECT A LOT OF BULLY!

- Herd Sires -



JOB-DANELL-PAY-PAL-12H

FEBRUARY 7, 2020 • AMGV 1474661

BALANCER® • 84.4% GV | 15.6% AN

JOB Danell Paygrade 68E (BBDM Bolton Payday 45C) X JOB Danell Josephine 33C (DLW New Frontier 33A ET)

CED	BW	WW	YW	Milk	TM	CEM	HP	PG30	ST	YG	CW	REA	MB	\$Cow	FPI	EPI
10	2.9	89	136	31	76	8	13.04	3.87	9	-0.26	51	0.89	0.19	89.24	84.58	92.38



JOB-DANELL-TOP-SHELF-38K-ET

FEBRUARY 24, 2022 • AMGV 1535044

PUREBRED • 99.9% GV | 0.1% XX

JOB Danell TD Chico Loco 28Y (ELK CK Crazy Horse 138P) X JOB Danell Josephine 33C (DLW New Frontier 33A ET)

CED	BW	WW	YW	Milk	TM	CEM	HP	PG30	ST	YG	CW	REA	MB	\$Cow	FPI	EPI
11	0.0	75	106	21	58	6	5.21	3.52	15	11	-0.25	34	0.36	106.63	82.45	68.74



Tenderness Score: 9



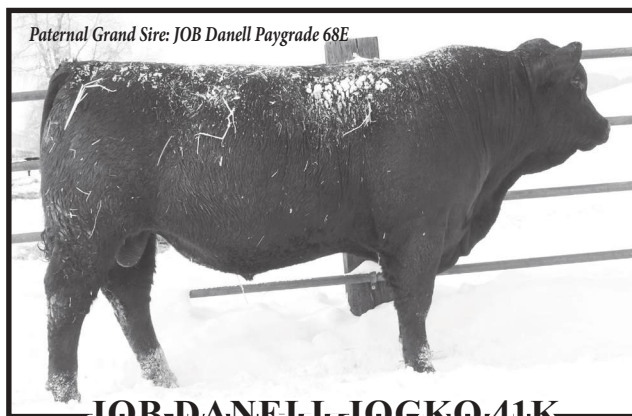
JOB-DANELL-KICKSTART-65K

MARCH 16, 2022 • AMGV 1536127

BALANCER® • 34.3% GV | 65.6% AN | 0.1% XX

JOB Danell Bogart 67H (JOB Danell Phoenix 15F) X JOB Danell Butterfly 53G (JOB Danell innovator 04D)

CED	BW	WW	YW	Milk	TM	CEM	HP	PG30	ST	YG	CW	REA	MB	\$Cow	FPI	EPI
13	-1.3	62	109	21	52	9	5.67	1.50	11	-0.20	35	0.76	0.69		86.34	



Paternal Grand Sire: JOB Danell Paygrade 68E

JOB-DANELL-JOCKO-41K

FEBRUARY 25, 2022 • AMGV 1535047

BALANCER® • 92.2% GV | 7.8% AN

JOB Danell Pay Pal 12H (JOB Danell Paygrade 68E) X JOB Danell Jocelyn 13F (JOB Danell Grand Slam 23D)

CED	BW	WW	YW	Milk	TM	CEM	HP	PG30	ST	YG	CW	REA	MB	\$Cow	FPI	EPI
13	2.2	80	124	24	64	8	4.29	3.52	16	-0.30	37	0.82	0.24	115.61	81.39	80.17



EXPECT A LOT OF BULLY

- Herd Sires -

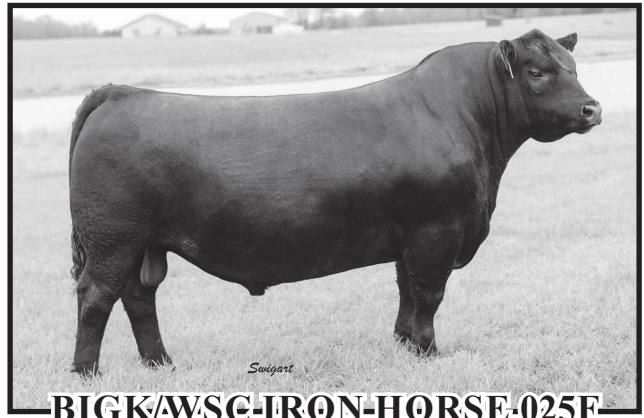


JKGF-ALL-AMERICAN-J109
 SEPTEMBER 8, 2021 • AMGV 1537675

PUREBRED • 99.9% GV | 0.1% XX

DLW TPG Fronrunner 2510F (DLW TPG Jackpot 7551B ET) X JKG F109 ET (CCRO Carolina Leverage 3214A)

CED	BW	WW	YW	Milk	TM	CEM	HP	PG30	ST	YG	CW	REA	MB	\$Cow	FPI	EPI
12	-0.9	88	148	21	65	7	13.41	2.39	18	-0.27	36	1.02	0.67	135.31	101.42	136.60



BIGK/WSC-IRON-HORSE-025F
 AUGUST 30, 2018 • AMAN 19415015

ANGUS • 100% AN

EXAR Stallion 7986 (EXAR Stud 4658B) X EXAR Henrietta Pride 5702 (Sandpoint Butkus X797)

CED	BW	WW	YW	Milk	TM	CEM	HP	PG30	ST	YG	CW	REA	MB	\$Cow	FPI	EPI
16	-1.4	106	179	24	99	13	1.57	-0.80	10	-0.03	77	0.96	0.74		114.72	



BARG-GO-TIME-781J
 JANUARY 21, 2021 • AMGV 1516381

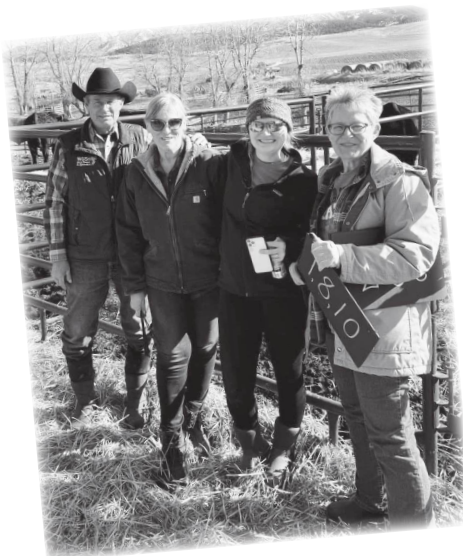
BALANCER* • 50.6% GV | 46.3% AN | 3.1% AR

TJB Rebel Yell 804F ET (JRI Probity 254D28 X BARG Sophia 781E (BDCG DC Crossbow 401C3 ET)

CED	BW	WW	YW	Milk	TM	CEM	HP	PG30	ST	YG	CW	REA	MB	\$Cow	FPI	EPI
14	0.7	71	113	25	61	7	9.21	1.60	17	0.06	46	0.52	0.43	118.12	81.47	70.43



*Family & Friends....
 The ones who make everything better!*



EXPECT A LOT OF BULLS!



EXPECT A LOT OF BULLY!

- AGA EPDS -

MATERNAL TRAITS

Calving ease direct (CED): Percent of unassisted births of a bull's calves when he is used on heifers. A higher number is favorable, meaning better calving ease. This EPD can be vital to a rancher looking to decrease the amount of calves pulled.

Milk (Milk): The genetic ability of a sire's daughters to produce milk expressed in pounds of weaning weight.

Calving ease maternal (CEM): Represented as percent of unassisted births in a sire's first-calving daughters. A higher number represents more favorable calving ease. This EPD is important to a rancher's bottom line because it predicts which animals produce daughters with a genetic pre-disposition to calve unassisted as heifers.

Heifer pregnancy (HP): Predicts the probability that a bull's daughters will become pregnant as first-calf heifers in a regular breeding season, expressed as a percent. A higher value of this EPD is favorable, meaning that a higher percentage of a sire's daughters get pregnant as first calf heifers compared to other sires in his contemporary group.

30-month pregnancy (Pg30): Predicts the probability that a bull's daughters will become pregnant and calve at three years of age, given that they calved as first-calf heifers. This EPD is expressed as a percent, again, with a higher number being more favorable meaning a higher percentage of a sire's daughters will calve at three years of age, given they calved as first-calf heifers.

Stayability (STAY): Predicts the genetic difference, in terms of percent probability, that a bull's daughters will stay productive within a herd to at least six year of age. The stayability EPD is one of the best measures currently available to compare a bull's ability to produce females with reproductive longevity.

Docility (DOC): Is reported as a percentage, with higher numbers indicating a higher percent of offspring receiving a disposition score of 1 (docile).

Scrotal circumference (SC): Predicts the difference, in centimeters, of scrotal circumference of an animal's male offspring at yearling compared to the SC of other animals' male offspring.

GROWTH TRAITS

Birth weight (BW): Predicts the difference, in pounds, for birth weight of the calf.

Weaning weight (WW): Predicts the difference, in pounds, for weaning weight (adjusted to age of dam and 205 days). An indicator of growth from birth to weaning.

Yearling weight (YW): Predicts the expected difference, in pounds, for yearling weight (adjusted to 365 days). This is an indicator of growth from birth to yearling.

CARCASS TRAITS

Yield grade (YG): Differences in yield grade score, which is a predictor of percent retail product. Smaller values suggest that progeny will have a better lean to fat ratio.

Carcass weight (CW): Differences in pounds of hot carcass weight, adjusted to an industry standard age endpoint.

Ribeye area (CREA): Differences in ribeye area in inches between the 12th and 13th rib. Greater ribeye areas are preferable.

Marbling (MARB): Predicts the differences in the degree of marbling within the ribeye as expressed in marbling score units. Greater marbling numbers are preferable and are an indicator of higher carcass quality grades.

Fat (CFAT): Differences for fat thickness, in inches, for a carcass over the 12th rib, smaller numbers of fat thickness are preferable as excess fat can be detrimental to yield grade.

EFFICIENCY TRAITS

Dry matter intake (DMI): Represents the average daily dry matter intake per day consumed in pounds. A negative, or lesser value, is more favorable.

INDEXES

Total maternal (TM): An index that combines growth and milk information as a prediction of the weaning weight performance of calves from a sire's daughters. A greater TM value means a mother that returns comparatively higher weaning weights on her calves. $TM \text{ Index} = MK \text{ EPD} + \frac{1}{2} WW \text{ EPD}$.

\$Cow: Represents the genetic value in dollars of profit of an animal when retained as a replacement female relative to other animals in the herd. A higher number represents more profitable genetics for maternal productivity. \$Cow will serve producers in selecting bulls that will sire daughters with stayability and reproductive efficiency as well as other traits that lead to profitability in a production system, such as milk, calving ease, moderate mature weight and the ability of calves to gain. A female's genetics also influence the performance of her calves in the feedlot and at slaughter, so traits such as feed efficiency and carcass value are also included in \$Cow.

Efficiency profit index (EPI): An economic selection index developed to aid producers in selecting for more feed efficient cattle that still have acceptable amounts of gain. The EPI provides slight negative pressure on intake, while keeping gain at a constant value. By selecting on this index, producers will be able to find those animals that gain the same amount as their contemporaries while eating less.

FPI™ which stands for feeder profit index: An economic selection index designed to aid producers in selecting sires whose progeny will perform in the feedlot and are sold on a grade and yield standpoint. Well ranking sires for FPI have higher marbling and carcass weight than their contemporaries. As a terminal index, little emphasis is put on maternal traits such as stayability and calving ease.

FOOT SCORE GUIDELINES

FOOT SCORE GUIDELINES

Claw Set (5 is ideal)

- Extremely weak, open, divergent claw set. Unsound.
- Open, divergent claw set. Marginally unsound.
- Moderately open/divergent claw set.
- Slightly open/divergent claw set.
- Ideal. Symmetrical claws, with appropriate space between claws.
- Slight tendency for claws to curl. One claw may be slightly larger than the other.
- Tendency for claws to curl, with one claw larger than the other.
- Moderate scissor claw and/or screw claw. Curling of one or both claws. Near crossing of claws. Marginally unsound.
- Extreme scissor claw and/or screw claw. Pronounced curling of one or both claws. Crossing of claws. Unsound.

Access AAA Login at angus.org to submit scores.

ANGUS
THE BUSINESS BREED

FOOT SCORE GUIDELINES

Foot Angle (5 is ideal)

- 1
- 2
- 3
- 4
- 5
- 6
- 7
- 8
- 9

Claw Set (5 is ideal)

- 1
- 2
- 3
- 4
- 5
- 6
- 7
- 8
- 9

FOOT SCORE GUIDELINES

Foot Angle (5 is ideal)

- Extremely straight pasterns. Very short toe. Unsound.
- Straight front and rear pasterns. Marginally unsound.
- Moderately straight front and rear pasterns.
- Slightly straight front and rear pasterns.
- Ideal. Approximately 45-degree angle at pastern joint. Appropriate length of toe and depth of heel.
- Slightly shallow heel and long toe.
- Moderately shallow heel and long toe. Somewhat weak pasterns.
- Shallow heel and long toe. Marginally unsound.
- Extremely shallow heel and long toe. Extremely weak pasterns. Unsound.

Access AAA Login at angus.org to submit scores.

ANGUS
THE BUSINESS BREED

Danell Diamond Six Six Ranch Gelbvieh
1012 Maiden Road
Lewistown, MT 59457



Join us for a preview
of the bulls on
Friday, March 28th
starting at 4 P.M.

VIDEOS & BIDDING AT WWW.BILLPELTON.COM

Lot 15



JOB DANELL FORTY NINER 62M

BIDDING CLOSSES MARCH 29, 2025