



*16th Annual Bull Sale*

**DECEMBER 11, 2024**

Wednesday | 1:00 PM | Clear Creek Ranch, South of Chinook



## Shipwheel Cattle Co.

Klint & Lori Swanson

2265 Gooseberry Lane, Chinook, Montana 59523

(406) 357-2492 • (406) 357-2298 fax

Email: [lori@shipwheelcattle.com](mailto:lori@shipwheelcattle.com) • [www.ShipwheelCattle.com](http://www.ShipwheelCattle.com)

Fellow Cattlemen, Cattlewomen and Friends

A big hello from our outfit to yours. We would like to welcome you to our 16th annual production sale. This year marks 40 years since our herd started from that first heifer that was a gift from Dad and Mom at Apex Angus. As you read through the catalog, you will see many descendants of that heifer.

A huge thank you goes out to everyone who has supported us along the way. Without you, this wouldn't be possible. We remain very committed to providing seedstock that are trouble-free and profitable for you. They sell fully guaranteed with a 3-year guarantee on feet. These guys have made it through 8 sorts to make it to the top 45%. Our program and management practices enable the bulls to grow and develop slowly with hopes of them working many, many years for you.

We are very proud of this year's offering from front to back. Large sire groups from our home-raised and A.I. sires as well as 20 ET sons from our elite donors for more consistency in your calf crop. In addition, we will be offering 40 bred heifers right out of the middle of the herd. Some will be A.I. bred for late March and the remaining bull bred for mid April.

Thank you again for your interest and continued support. If you are new to our program, we would love to meet and visit. We look forward to seeing you on sale day. If you can't make it and have questions, please give us a call.

Klint, Lori, Austin & Bree Swanson

Check us out at:

[www.ShipwheelCattle.com](http://www.ShipwheelCattle.com)



*Austin, Lori, Klint & Bree Swanson*



# 16TH ANNUAL BULL SALE WEDNESDAY DECEMBER 11, 2024

Lunch at noon • Sale 1:00 P.M.  
At the Clear Creek Ranch, South of Chinook, MT

**Selling: 115 coming 2-year-old bulls • 40 Shipwheel bred heifers**

### Sale Location:

Shipwheel Cattle Co. South of Chinook: On Hwy 2 in Chinook, turn at the Bear Paw Motel. Head south approx 1 mile to the corner of Route 529 and turn right on to Clear Creek Road. Continue South 11-1/2 miles to Gooseberry Lane and turn right. Go west 2 miles to Shipwheel Cattle Co. barn in the main yard.

### Inspection:

Bulls are available anytime at the ranch Chinook, MT.

### Sale Order:

- Bulls in catalog order
- Bred Heifers

### Auctioneer:



**Kyle Shobe,  
Lewistown MT**

**Cell Phone:  
(406)366-0472**

### Special Representatives:

Kurt Kangas . American Angus Regional Manager 406-366-4190  
 Matt Wznick .....Western Ag Reporter 406-489-2414  
 Bo Bevis .....Northern Livestock Video Auction 406-390-3134  
 Gary Buffington Northern Livestock Video Auction 406-390-9939  
 Devin Murnin.....Western Livestock Journal 406-696-1502  
 Curt Cox ..... Wyoming Livestock Roundup 307-630-4604

### Sale Day Phone:

**(406) 357-2492 (Office)**  
**(406)-399-2962 (Klint's cell)**  
**(406) 945-4180 (Lori's cell)**



### LIVE ON THE INTERNET

See page 4 for details

### Trucking:

Free Delivery on bulls up to 1000 miles on purchases totaling \$10,000 or more. Delivery beyond, at cost. \$50 discount per bull if picked up within 1 week.

### Volume Discount:

2% on 2 bulls, 5% on 5 up to 10% on 10 bulls.

### First Year Breeding Guarantee:

We offer a first breeding season guarantee for any injury that would keep a bull from breeding. If a problem occurs, we will give you a suitable replacement or you will receive full credit, minus the salvage value of the original bull.

### Sight Unseen Buying:

If you are unable to attend the sale, and would like to purchase, please give us a call. We will be glad to help you with your order. We guarantee 100% satisfaction on all orders.

### Herd Health:

Our herd health, semen, scrotal evaluation and ultrasound pregnancy testing is performed by Chinook Vet Clinic; Dr. Bob Schmitt, DVM and Dr. Lane Schmitt, DVM. All bulls selling that Shipwheel has used for natural service have tested negative for trichomoniasis.

### Wintering:

We recommend that the bulls get to their new home within a month of the sale. Wintering arrangements can be made until early April for \$300 per bull if early delivery isn't an option.

### Retained Interest:

Shipwheel Cattle Co. is retaining one-third (1/3) revenue sharing semen interest in every bull selling.

### Terms & Conditions:

All cattle sell under the standard terms and conditions of the American Angus Association. Announcements sale day will take precedence over info in the catalog. Payment must be made day of sale, unless other prior arrangements are made.

### Liability:

All persons who attend the sale do so at their own risk, Shipwheel Cattle Co assumes no liability, legal or otherwise, for any accidents which may occur.



# REFERENCE SIRES

## SHIPWHEEL DREAMER 8522



**24 Sons Sell**

## SHIPWHEEL DREAMER 8522

Reg: +\*19534719

R R Rito 707 #  
 Rito 707 of Ideal 3407 7075  
 Ideal 3407 of 1418 076  
**S A V Renown 3439 #**  
 S A V Blackcap May 4136  
 S A V 8180 Traveler 004 #  
 S A V May 2397 #  
 Leachman Right Time 338-5605 #  
 WMR Blackcap 521  
**WMR Pride 03**  
 SRA 2418 of RR 303  
 WMR Pride 857  
 W M R Pride 045 #

<b>CED</b>	<b>+0</b>
<b>BW</b>	<b>+3.3</b>
<b>WW</b>	<b>+69</b>
<b>YW</b>	<b>+123</b>
<b>MILK</b>	<b>+28</b>
<b>SC</b>	<b>+1.00</b>
<b>MB</b>	<b>+0.26</b>
<b>RE</b>	<b>+0.81</b>
<b>FAT</b>	<b>+0.028</b>
<b>Claw</b>	<b>+0.47</b>
<b>Angle</b>	<b>.41</b>

Our co-top selling bull in 2019. He's truly the kind we strive to raise and about as complete as we can make one. He's a medium framed, easy fleshing bull with extra muscle shape and nice angus head. Dreamer is very athletic and moves freely with a long stride and good feet. He injects extra muscle shape and style into his sons while the daughters are broody, soft made and easy fleshing with very nice udders. Dreamers 14 year old dam is the highest income producing cow we have.

**Owned with 33 Cattle Company, ND. Leased to Beef 360.**

## S A V GRAND CANYON 0969



**17 Sons Sell**

## S A V GRAND CANYON 0969

Reg: +\*19860277

O C C Paxton 730P #  
 Coleman Charlo 0256 #  
 Bohi Abigale 6014  
**S A V Rainfall 6846**  
 S A V Blackcap May 4136  
 S A V 8180 Traveler 004 #  
 S A V May 2397 #  
 S A V 8180 Traveler 004 #  
 S A V Net Worth 4200 #  
 S A V May 2410  
**S A V Madame Pride 9477**  
 S A F 598 Bando 5175 #  
 S A V Madame Pride 0075  
 S A V Madame Pride 8264

<b>CED</b>	<b>+9</b>
<b>BW</b>	<b>+3</b>
<b>WW</b>	<b>+56</b>
<b>YW</b>	<b>+99</b>
<b>MILK</b>	<b>+30</b>
<b>SC</b>	<b>+1.22</b>
<b>MB</b>	<b>+0.67</b>
<b>RE</b>	<b>+0.22</b>
<b>FAT</b>	<b>+0.080</b>
<b>Claw</b>	<b>+0.24</b>
<b>Angle</b>	<b>+0.42</b>

Grand Canyon is a moderate framed bull with extra muscle shape, dimension and excellent feet. His Net Worth dam is one of the best to come through the SAV program, producing well up into her teens. Grand Canyon met our criteria with these traits and was an easy choice to use. An impressive set of sons sell.

## S RIGHT TIME 7861



**29 Sons Sell**

## S RIGHT TIME 7861

Reg: \*18762372

Hyline Right Time 338 #  
 Leachman Right Time 338-5605 #  
 Leachman Erica 1201  
**Sitz Right Time 8034**  
 Sitz Alliance 6595 #  
 Sitz Florabelle Fanny 1293 #  
 Sitz Florabelle Fanny 706  
 S Alliance 3313  
 S Gloria 464 #  
**S Queen Essa 367**  
 Leachman Right Time #  
 S Queen Essa 208 #  
 S Queen Essa 031

<b>CED</b>	<b>+6</b>
<b>BW</b>	<b>+2.4</b>
<b>WW</b>	<b>+84</b>
<b>YW</b>	<b>+128</b>
<b>MILK</b>	<b>+25</b>
<b>SC</b>	<b>+1.62</b>
<b>MB</b>	<b>+0.68</b>
<b>RE</b>	<b>+0.37</b>
<b>FAT</b>	<b>+0.052</b>
<b>Claw</b>	<b>+0.39</b>
<b>Angle</b>	<b>+0.35</b>

7861 is a very good footed bull with good length and muscle shape. We were able to use him quite a bit based on his pedigree. His sons will be athletic breeding bulls, and we look forward to his daughters in production.



# REFERENCE SIRES

## SHIPWHEEL RAINMAKER 0538



**10 Sons Sell**

## SHIPWHEEL RAINMAKER 0538 Reg: \*20003132

Basin Rainmaker 2704  
**Basin Rainmaker 4404 #**  
 Basin Joy 1036  
 BPF DR J 2110  
**Shipwheel Pinetop 887**  
 Shipwheel Pinetop 515

Basin Rainmaker P175 #  
 Basin Erica 7520 BV #  
 Basin Payweight 107S #  
 Basin Joy 566T  
 Shipwheel Dr J In Focus 9560  
 BPF Forever Lady 651  
 S A V Resource 1441 #  
 Dr J Ms Wide Track 374 M15

CED	-1
BW	+5.3
WW	+73
YW	+133
MILK	+27
SC	+1.97
MB	+1.02
RE	+0.67
FAT	+0.50
Claw	+0.42
Angle	+0.46

0538 was a top selling bull in 2021 that we chose to carry on the Rainmaker line. He is an impressive individual and has proven himself to be a very good breeding bull. 0538 packs outstanding feet at 4 years of age and has an impressive long, clean front end, that is much needed in angus today. Powerful cow family behind him. His daughters should be outstanding.

**Owned with Apex Angus Ranch, MT  
 Semen Available**

## IDEAL 0026 RITO OF REN



**9 Sons Sell**

## IDEAL 0026 RITO OF REN Reg: \*19888476

Rito 707 of Ideal 3407 7075  
**S A V Renown 3439 #**  
 S A V Blackcap May 4136  
 Coleman Emblazon 0116  
**Ideal 7005 of 0116 Erilou**  
 Ideal 5724 of 9524 Erilou

R R Rito 707 #  
 Ideal 3407 of 1418 076  
 S A V 8180 Traveler 004 #  
 S A V May 2397 #  
 O C C Emblazon 854E #  
 Bohi Lady 1165  
 Ideal 9524 of 5570 6809 #  
 Ideal 7538 of 3542 4683

CED	+7
BW	-1.0
WW	+63
YW	+120
MILK	+27
SC	+0.83
MB	+0.14
RE	+0.54
FAT	+0.90
Claw	+0.40
Angle	+0.46

0026 is a 4 year old bull now that impresses us more each year. He's moderate framed, thick made and easy fleshing with excellent feet. We have bred him to hundreds of heifers over the years with great success. His daughters will be outstanding. Look for a lot more out of this bull.

**Semen Available**

## SHIPWHEEL CONFEDERATE 1507



**7 Sons Sell**

## SHIPWHEEL CONFEDERATE 1507 Reg: \*20326233

HF Syndicate 213Z  
**U-2 Coalition 206C #**  
 U2 Erelite 109Z  
 LD Capitalist 316 #  
**Shipwheel Pinetop 932**  
 Shipwheel Pinetop 651 #

Connealy Consensus 7229 #  
 HF Miss Blackcap 27R  
 Young Dale Xclusive 25X  
 U-2 Erelite 1X  
 Connealy Capitalist 028 #  
 LD Dixie Erica 2053  
 S A V Resource 1441 #  
 Shipwheel Pinetop 365

CED	+5
BW	+1.7
WW	+74
YW	+130
MILK	+31
SC	+0.75
MB	+0.64
RE	+0.68
FAT	+0.24
Claw	+0.42
Angle	+0.44

Confederate was our top selling bull in 2022. He's an impressive, gentle bull with extra length and depth and is backed by a powerful cow family as his mother raised our Lot 1 bull again this year. His sons catch your eye, and we anxiously await his daughters to get into production.

**Owned with Stepler Ranch, MT and Whistling Winds Angus, MT  
 Leased to Breeder Link  
 Semen Available**



# REFERENCE SIRES

## BRAUN CREEK CAPITALIST 938



**4 Sons Sell**

## BRAUN CREEK CAPITALIST 938

Reg: 19545430

Connealy Capitalist 028 # S A V Final Answer 0035 #  
 LD Capitalist 316 # Prides Pita of Conanga 8821  
 LD Dixie Erica 2053 C A Future Direction 5321 #  
 Shipwheel Far & Wide 1558 LD Dixie Erica Oar 0853  
 Braun Creek Merle 718 Sitz Far & Wide 6908  
 Braun Creek Merle 556 DR J Ms Apex Focus 053 M85  
 Shipwheel ForeFront 0567  
 Braun Creek Merle 818

CED	+7
BW	+5
WW	+57
YW	+103
MILK	+28
SC	+0.06
MB	+8.1
RE	+6.6
FAT	+0.27
Claw	+3.5
Angle	+4.7

938 is a five year old bull that we purchased from Harvey Thompson at Braun Creek Angus. He has proven to be an outstanding breeding bull and impresses us more every year. He's easy to be around and packs excellent feet. He serviced 50 cows this year. Look for a lot more out of this bull.

Owned with Braun Creek Angus Ranch, MT.  
 Semen Available.

## SHIPWHEEL ESSENTIAL 9536



**3 Sons Sell**

## SHIPWHEEL ESSENTIAL 9536

Reg: \*19693736

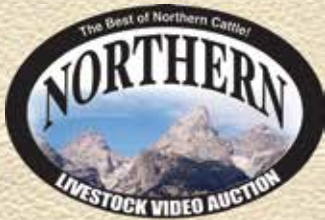
S A V Resource 1441 Rito 707 of Ideal 3407 7075  
 Shipwheel Resource 5621 S A V Blackcap May 4136  
 Apex Eriskay 5506 # Mytty In Focus #  
 LT Regions 4110 Apexette Eriskay 3032  
 Shipwheel Pinetop 720 Koupal Advance 28 #  
 Shipwheel Pinetop 572 LT Beauty 8398  
 Shipwheel Pinetop 059 Sitz Far & Wide 6908

CED	+8
BW	+8
WW	+63
YW	+121
MILK	+24
SC	+1.29
MB	+3.6
RE	+4.4
FAT	+0.09
Claw	+3.8
Angle	+4.7

Essential sold in our 2020 sale to Shane and Vicki Schwenke at Thornhill Ranch, MT. Essential had the herd bull look from day one. He is double bred to our herd bull producing Eriskay cow family, known for excellent udders, moderate size and consistently producing well up into their teens. His dam is a model angus cow that has entered our donor pen.

## SHIPWHEEL CATTLE COMPANY CARRIED LIVE ON THE INTERNET

Bid through Northern Livestock Video Auction's NEW Online Bidding Platform!  
 Desktop and Mobile Friendly



### For the Desktop:

1. It is best to use the Google Chrome web browser.
2. **Pre-Register at least one day prior to the sale.**
3. Go to [bid.northernlivestockvideo.com](http://bid.northernlivestockvideo.com) and click "Get Approved to Bid".
4. Doing this will prompt you to create an account, after which you will fill out a bidder approval application.
5. Once Approved, an email will be sent to the email account provided, please click the link in that email to activate your account and a buyer number will be provided.
6. On sale day (after approval), visit [www.northernlivestockvideo.com](http://www.northernlivestockvideo.com) to view and bid!

### For the Mobile:

Use your mobile device to download the Northern App and follow the above steps to get approved.

**There is an instructional video on how to register to bid on our website, [www.northernlivestockvideo.com](http://www.northernlivestockvideo.com) if you have any questions.**

**For technical assistance with Internet Viewing and Bidding Questions, call Sam Fraser 406-860-0590.**

### Phone Bidding:

Anyone wanting to use the Northern Livestock phone bank to bid must pre-register and have a bid number to bid on the phone.

**To register with NLVA call 866-616-5035 Before Sale Day.**

View the Online CATALOG and VIDEO CLIP of each BULL selling at [www.northernlivestockvideo.com](http://www.northernlivestockvideo.com).

Bidders who are successful in making purchases will be contacted following the sale to make payment and delivery arrangements.

Northern Livestock's Sale Day Bid Line: **1-406-245-0889.**

# EXPLANATION OF CALVING EASE SCORE DISPOSITION AND FOOT SCORES

We pay very close attention to the foot quality of our herd and only use a bull that we feel will improve hoof structure. We focus on breeding an Angus cow that will stand the test of time in our extreme Northern Montana climate. Foot Quality has been severely over-looked in the chase for bigger numbers. No animal here is trimmed except for our horses. If there ever is a foot problem with a bull purchased from us, we make it right. Any bulls that showed signs of poor hoof structure have been culled.



## SHIPWHEEL GRAND CANYON 3656

Reg:\*21023577 • Calved: 04/22/23



S A V Rainfall 6846  
S A V Grand Canyon 0969  
S A V Madame Pride 9477

Coleman Charlo 0256 #  
S A V Blackcap May 4136  
S A V Net Worth 4200 #  
S A V Madame Pride 0075

LD Capitalist 316 #  
Shipwheel Pinetop 932  
Shipwheel Pinetop 651 #

Connealy Capitalist 028 #  
LD Dixie Erica 2053  
S A V Resource 1441 #  
Shipwheel Pinetop 365

EPDs	
CED	
BW	
WW	
YW	
MILK	
SC	
MB	
RE	
FAT	
Claw	
Angle	

BW	205 WT	WR	YR	Scrotal
Dam BR		Dam WR		Dam YR

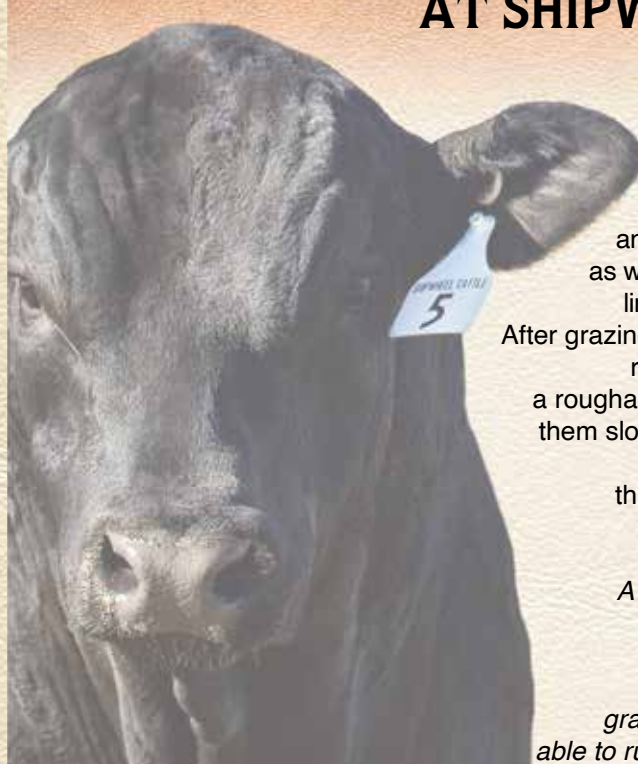
Calving Ease Score: 0      Front Foot Score: 0  
Disposition Score: 0      Hind Foot Score: 0

CALVING EASE SCORE:

- 1—Cow Bull
- 2—Large framed heifers or cows
- 3—All heifers or cows

### DISPOSITION AND FOOT SCORES:

The scoring for the disposition and foot scores are based on a 1-5 rating. 1 being the very worst and 5 being the very best.



## BULL DEVELOPMENT AT SHIPWHEEL CATTLE CO.

Prior to calving, our cows are expected to graze winter pasture with only SweetPro blocks, usually well into February before seeing any hay. Our cows are range calved in April and May while only being checked once a day. The pairs summer primarily in some of our higher, rougher pastures with the calves never seeing any creep feed. A full round of shots are given at our June/July brandings as well as preconditioning in September/October. The calves are then fence line weaned in early November on our hay meadows and SweetPro blocks. After grazing for 30 days, the bulls are then hauled into our grow yard, where they remain until May. While in the grow yard, a 2.5 lb. gain is targeted with a roughage based diet. We are constantly evaluating them and enjoy watching them slowly progress into structurally sound breeding bulls. The bulls are then hauled to summer pasture where they are expected to travel and thrive in rough terrain. In September, the bulls are brought back into the grow yard and fed a similar diet to post weaning. The bulls are broke to horses, dogs and a hot wire.

*A huge thank you goes out to Ron Amidon for the countless hours spent on our rations. His knowledge and experience is very valuable to our program. Also thanks to R&G Feeds, Malta MT.*

*Also a big thanks to Austin and Raelynn Genereaux for the summer grazing lease for the bulls. We appreciate your efforts and the bulls being able to run out in some rougher country really helps them in their development.*



## SHIPWHEEL GRAND CANYON 3656

Reg:\*21023577 • Calved: 04/22/23



SA V Rainfall 6846  
**SA V Grand Canyon 0969**  
 SA V Madame Pride 9477

Coleman Charlo 0256 #  
 SA V Blackcap May 4136  
 SA V Net Worth 4200 #  
 SA V Madame Pride 0075  
 Connealy Capitalist 028 #  
 LD Dixie Erica 2053  
 SA V Resource 1441 #  
 Shipwheel Pinetop 365

LD Capitalist 316 #  
**Shipwheel Pinetop 932**  
 Shipwheel Pinetop 651 #

EPDs	
CED	+9
BW	+1.5
WW	+81
YW	+145
MILK	+27

<b>BW</b>	<b>205 WT</b>	<b>WR</b>	<b>YR</b>	<b>Scrotal</b>	<b>SC</b>
93	749	119	114	38.5	MB +.22
<b>Dam BR</b>		<b>Dam WR</b>		<b>Dam YR</b>	
3/111		3/109		3/106	

Calving Ease Score: 2      Front Foot Score: 4  
 Disposition Score: 4      Hind Foot Score: 4

<b>RE</b>	<b>+ .73</b>
<b>FAT</b>	<b>+ .052</b>
<b>Claw</b>	<b>+ .30</b>
<b>Angle</b>	<b>+ .45</b>

- Powerful, wide based, long strided bull with extra length and bone. He's had our attention from day one and is backed by tremendous maternal. Total package here.
- Donor dam is becoming one of the most influential cows on the ranch. She raised our top seller in 2022, as her first calf, to Stepler Ranch and Whistling Winds Angus, MT.
- Pathfinder granddam.
- Donor 4th dam.
- 5th Dam raised 12 calves @ 107 WR.
- 6th Dam raised 11 calves @ 102 WR.



Shipwheel Pinetop 932 - Dam of Lot 1



Shipwheel Confederate 1507 - Maternal brother to Lot 1





- Truly one of our favorite Dreamer sons this year and the kind we strive to raise. He's a gentle, medium framed, soft-made, deep ribbed dandy that will leave tremendous daughters. The Dreamer sons came off grass in excellent shape.
- Dam is a fancy, feminine, excellent uddered, young cow.



### SHIPWHEEL DREAMER 3613

Reg:\*20918237 · Calved: 04/22/23



S A V Renown 3439 #  
**Shipwheel Dreamer 8522**  
 WMR Pride 03

Rito 707 of Ideal 3407 7075  
 S A V Blackcap May 4136  
 WMR Timeless 458 #  
 WMR Pride 857

Ideal 4223 of 1168 Blkbrd  
**Shipwheel Black Pride 738**  
 Shipwheel Black Pride 551

Ideal 1168 of 9814 Lady  
 Ideal 2441 of 9524 Blkbrd  
 Shipwheel Montana 2600  
 Shipwheel Black Pride 1111

BW	205 WT	WR	YR	Scrotal
74	635	100	102	35
Dam BR	Dam WR	Dam YR		
5/95	5/102	5/103		

EPDs	
CED	+12
BW	+1
WW	+61
YW	+103
MILK	+30
SC	+5.9
MB	+4.3
RE	+3.5
FAT	+0.70
Claw	+5.7
Angle	+5.5

Calving Ease Score: 3    Front Foot Score: 4  
 Disposition Score: 4.5    Hind Foot Score: 4



### SHIPWHEEL DREAMER 3615

Reg:\*20918239 · Calved: 04/28/23



S A V Renown 3439 #  
**Shipwheel Dreamer 8522**  
 WMR Pride 03

Rito 707 of Ideal 3407 7075  
 S A V Blackcap May 4136  
 WMR Timeless 458 #  
 WMR Pride 857

S Chisum 255 #  
**Shipwheel Pinetop 7105**  
 Shipwheel Pinetop 154

S Chisum 6175 #  
 S Blossom 0278 #  
 Sitz Upward 307R #  
 DR J Ms Apex Focus 053 M26

BW	205 WT	WR	YR	Scrotal
86	673	106	103	38
Dam BR	Dam WR	Dam YR		
5/96	5/99	4/101		

EPDs	
CED	+10
BW	+1.1
WW	+63
YW	+107
MILK	+28
SC	+7.3
MB	+2.8
RE	+8.5
FAT	+0.32
Claw	+4.3
Angle	+3.6

Calving Ease Score: 3    Front Foot Score: 4.5  
 Disposition Score: 4.5    Hind Foot Score: 4.5



Shipwheel Dreamer 8522 - Sire of Lot 2 & 3

- An attractive, gentle bull with excellent muscle shape, style and excellent feet.
- Dam is an attractive, wedge-shaped cow. Loads of longevity in this cow family.
- Granddam is currently 13 and still in production.
- Donor 3rd dam 12 @ 106 WR.
- Donor 4th dam 12 @ 106 WR.
- 5th dam 11 @ 102 WR.





## SHIPWHEEL RAINMAKER 3657

Reg:\*20918262 • Calved: 05/17/23

Basin Rainmaker 4404 #  
**Shipwheel Rainmaker 0538**  
 Shipwheel Pinetop 887

S A V Resource 1441 #  
**Shipwheel Georgina 791 #**  
 Shipwheel Georgina 151

Basin Rainmaker 2704  
 Basin Joy 1036  
 BPF DR J 2110  
 Shipwheel Pinetop 515  
 Rito 707 of Ideal 3407 7075  
 S A V Blackcap May 4136  
 Sitz Far & Wide 6908  
 Dr J Miss Apex Focus 053-L60



EPDs	
CED	+1
BW	+4.2
WW	+70
YW	+124
MILK	+25
SC	+1.94
MB	+0.54
RE	+1.39
FAT	-0.005
Claw	+0.58
Angle	+0.61

BW	205 WT	WR	YR	Scrotal
95	687	109	107	36
Dam BR	Dam WR	Dam YR		
5/105	5/108	5/105		

Calving Ease Score: 1      Front Foot Score: 4  
 Disposition Score: 4.5      Hind Foot Score: 4

- The natural calf by our 791 Pathfinder donor cow, and the first son to sell from our Rainmaker 0538 bull that we are excited about.
- Lot 4 will sire sons with extra shape, muscle, and heifers for the replacement pen.
- 6 of the 7 cows on his pedigree are donors.



Shipwheel Rainmaker 0538 - Sire of Lot 4



Shipwheel Georgina 791 - Dam of Lot 4, 5, 6, 7, 70 & 71

# LOTS 5, 6 & 7 - EMBRYO BROTHERS

- An impressive group of embryo brothers with extra length, scrotal and muscle shape. They are athletic bulls with good feet.
- Donor dam is truly one of our favorites and to many visitors as well. Impressive cow family with plenty of longevity bred in.
- Full ET brothers to Lot's 70 & 71.
- Donor Grand dam 11 @ 100 WR and still in production and dam to Lot 90.

5

## SHIPWHEEL RIGHT TIME 3675

Reg: +\*20927054 • Calved: 04/25/23

Sitz Right Time 8034  
**S Right Time 7861**  
S Queen Essa 367

S A V Resource 1441 #  
**Shipwheel Georgina 791 #**  
Shipwheel Georgina 151

Leachman Right Time 338-5605 #  
Sitz Florabelle Fanny 1293 #  
S Chisum 6175 #  
S Queen Essa 208 #

Rito 707 of Ideal 3407 7075  
S A V Blackcap May 4136  
Sitz Far & Wide 6908  
Dr J Miss Apex Focus 053-L60

EPDs	
CED	-2
BW	+4.6
WW	+71
YW	+116
MILK	+18

BW	205 WT	WR	YR	Scrotal	SC
96	689	100	100	40	MB +.68
Dam BR		Dam WR		Dam YR	
5/105		5/108		5/105	

Calving Ease Score: 1      Front Foot Score: 4.5  
Disposition Score: 4.5      Hind Foot Score: 4.5



6

## SHIPWHEEL RIGHT TIME 3671

Reg: +\*20927050 • Calved: 04/23/23

Sitz Right Time 8034  
**S Right Time 7861**  
S Queen Essa 367

S A V Resource 1441 #  
**Shipwheel Georgina 791 #**  
Shipwheel Georgina 151

Leachman Right Time 338-5605 #  
Sitz Florabelle Fanny 1293 #  
S Chisum 6175 #  
S Queen Essa 208 #

Rito 707 of Ideal 3407 7075  
S A V Blackcap May 4136  
Sitz Far & Wide 6908  
Dr J Miss Apex Focus 053-L60

EPDs	
CED	+10
BW	+1.0
WW	+56
YW	+97
MILK	+27

BW	205 WT	WR	YR	Scrotal	SC
79	660	116	110	42	MB +.60
Dam BR		Dam WR		Dam YR	
5/105		5/108		5/105	

Calving Ease Score: 3      Front Foot Score: 4  
Disposition Score: 4.5      Hind Foot Score: 4



7

## SHIPWHEEL RIGHT TIME 3673

Reg: +\*20927052 • Calved: 04/29/23

Sitz Right Time 8034  
**S Right Time 7861**  
S Queen Essa 367

S A V Resource 1441 #  
**Shipwheel Georgina 791 #**  
Shipwheel Georgina 151

Leachman Right Time 338-5605 #  
Sitz Florabelle Fanny 1293 #  
S Chisum 6175 #  
S Queen Essa 208 #

Rito 707 of Ideal 3407 7075  
S A V Blackcap May 4136  
Sitz Far & Wide 6908  
Dr J Miss Apex Focus 053-L60

EPDs	
CED	+6
BW	+2.8
WW	+73
YW	+128
MILK	+27

BW	205 WT	WR	YR	Scrotal	SC
79	640	100	100	39	MB +.28
Dam BR		Dam WR		Dam YR	
5/105		5/108		5/105	

Calving Ease Score: 1      Front Foot Score: 4.5  
Disposition Score: 4      Hind Foot Score: 4.5





# SHIPWHEEL GRAND CANYON 3604

Reg:\*20918232 • Calved: 05/08/23



S A V Rainfall 6846  
S A V Grand Canyon 0969  
S A V Madame Pride 9477

Coleman Charlo 0256 #  
S A V Blackcap May 4136  
S A V Net Worth 4200 #  
S A V Madame Pride 0075  
S A V 004 Density 4336 #  
Falcon Blackbird 6071  
Shipwheel Chinook #  
Shipwheel Black Pride 915

EPDs	
CED	+11
BW	+1.8
WW	+71
YW	+129
MILK	+36
SC	+1.05
MB	+0.35
RE	+0.64
FAT	+0.77
Claw	+0.35
Angle	+0.41

Bruin Torque 5261 #  
Shipwheel Black Pride 8118  
Shipwheel Black Pride 171

BW	205 WT	WR	YR	Scrotal
106	702	111	111	37
Dam BR		Dam WR		Dam YR
3/120		3/103		3/106

Calving Ease Score: 1    Front Foot Score: 4.25  
Disposition Score: 4    Hind Foot Score: 4.25

- Deep, long and thick. This guy has had our attention from early on. 106 BW but genomicscall him a heifer bull. A calving ease bull with this much power would be very desirable.
- Dam is a pretty, wedge shaped, long bodied cow.



# SHIPWHEEL GRAND CANYON 3578

Reg:\*20918216 • Calved: 04/28/23



S A V Rainfall 6846  
S A V Grand Canyon 0969  
S A V Madame Pride 9477

Coleman Charlo 0256 #  
S A V Blackcap May 4136  
S A V Net Worth 4200 #  
S A V Madame Pride 0075  
S A V 004 Density 4336 #  
Falcon Blackbird 6071  
S A V Resource 1441 #  
Dr J Ms Wide Track 374 M15

EPDs	
CED	+0
BW	+5.3
WW	+87
YW	+145
MILK	+16
SC	+0.38
MB	+0.21
RE	+1.16
FAT	-0.15
Claw	+0.30
Angle	+0.35

Bruin Torque 5261 #  
Shipwheel Pinetop 988  
Shipwheel Pinetop 508

BW	205 WT	WR	YR	Scrotal
94	723	114	110	37
Dam BR		Dam WR		Dam YR
3/109		3/110		3/109

Calving Ease Score: 1    Front Foot Score: 4.25  
Disposition Score: 4    Hind Foot Score: 4.5

- He's deep, long and athletic with good muscle expression and feet. Second heaviest bull off grass.
- Young dam hales from one of our top cow families. She's super long bodied with an excellent Torque udder.
- 3rd dam is the mother to Shipwheel Montana.
- Donor 4th dam.
- 5th dam 12@ 107 WR.
- 6th dam 11@ 102 WR.





# SHIPWHEEL RAINMAKER 3513

Reg:\*20940624 • Calved: 04/18/23



Basin Rainmaker 4404 #  
Shipwheel Rainmaker 0538  
Shipwheel Pinetop 887

Basin Rainmaker 2704  
Basin Joy 1036  
BPF DR J 2110  
Shipwheel Pinetop 515  
Connealy Capitalist 028 #  
LD Dixie Erica 2053  
S A V Resource 1441 #  
DR J Miss Guru I60

EPDs	
CED	+3
BW	+5.0
WW	+81
YW	+143
MILK	+14
SC	+1.57
MB	+1.02
RE	+1.06
FAT	+0.61
Claw	+0.39
Angle	+0.41

BW	205 WT	WR	YR	Scrotal
87	632	105	110	38.5
Dam BR		Dam WR		Dam YR
2/98		2/102		2/105

Calving Ease Score: 1 Front Foot Score: 4

Disposition Score: 4.5 Hind Foot Score: 4

- An eye catcher here with extra performance and carcass traits.
- Dam is a pretty, young 316 daughter with "A" ratings in every category at calving time.



# SHIPWHEEL RAINMAKER 3655

Reg:\*21023576 • Calved: 04/20/23



Basin Rainmaker 4404 #  
Shipwheel Rainmaker 0538  
Shipwheel Pinetop 887

Basin Rainmaker 2704  
Basin Joy 1036  
BPF DR J 2110  
Shipwheel Pinetop 515  
Connealy Capitalist 028 #  
LD Dixie Erica 2053  
S Chisum 6175 #  
DR J Miss Guru I6

EPDs	
CED	+0
BW	+5.6
WW	+84
YW	+150
MILK	+18
SC	+1.20
MB	+0.53
RE	+0.49
FAT	+0.81
Claw	+0.41
Angle	+0.56

BW	205 WT	WR	YR	Scrotal
92	719	114	110	37
Dam BR		Dam WR		Dam YR
3/95		3/108		3/106

Calving Ease Score: 1 Front Foot Score: 4.5

Disposition Score: 4 Hind Foot Score: 4.5

- A very good footed bull with extra performance backed by a tremendous cow family.
- Pathfinder donor dam is about as good as we can make one.
- Donor granddam is currently 12 and still in production.
- Donor 3rd dam. • 4th dam 12 @ 107 WR. • 5th dam 11 @ 102 WR.



Shipwheel Pinetop 9108 - Dam of Lot 11



Shipwheel Pinetop 251 - Granddam of Lot 11



# SHIPWHEEL DIGNITY 3570

Reg:\*20931894 • Calved: 04/16/23



Sitz Resilient 10208  
SITZ Dignity 599J  
SITZ Barabamere Nell 53F #

Sitz Stellar 726D #  
Sitz Miss Burgess 1856  
Sitz Invasion 574D  
SITZ Barabamere Nell 105D  
Rito 707 of Ideal 3407 7075  
S A V Blackcap May 4136  
Sitz Far & Wide 6908  
Apexette Chloe 4099 #

S A V Resource 1441 #  
Shipwheel Chloe 845  
Shipwheel Chloe 263 #

EPDs	
CED	+4
BW	+3.2
WW	+76
YW	+138
MILK	+23
SC	+0.62
MB	+0.65
RE	+0.71
FAT	+0.19
Claw	+0.29
Angle	+0.42

BW	205 WT	WR	YR	Scrotal
86	649	108	109	37
Dam BR		Dam WR		Dam YR
4/100		4/105		4/104

Calving Ease Score: 1 Front Foot Score: 4.5

Disposition Score: 4 Hind Foot Score: 4.5

- A good footed, attractive, no-holes bull that really covers all the bases. A maternal brother was a top seller to Judd Hoos, NE in 2023 that we used back in our program.
- Dam is an ideal angus cow and the first to calve this year with twins. Granddam to Lot 16.
- Pathfinder granddam is currently 12 and still in production.
- Pathfinder 3rd dam.
- Pathfinder 6th dam was Klint's 4-H show heifer in 1988.
- 7th dam raised Apex Transform 013 and later sold to Vance Uden at TC Ranch, NE.



Shipwheel Rainmaker 2504 - Maternal brother of Lot 12



**13 SHIPWHEEL CONFEDERATE 3527**  
 Reg:\*20939500 • Calved: 04/01/23

U-2 Coalition 206C #  
**Shipwheel Confederate 1507**  
 Shipwheel Pinetop 932

HF Syndicate 213Z  
 U2 Erelite 109Z  
 LD Capitalist 316 #  
 Shipwheel Pinetop 651 #

Shipwheel Dreamer 8522  
**Shipwheel Pinetop 148**  
 Shipwheel Pinetop 720 #

S A V Renown 3439 #  
 WMR Pride 03  
 LT Regions 4110  
 Shipwheel Pinetop 572



EPDs					
<b>CED</b>	<b>+1</b>				
<b>BW</b>	<b>+4.1</b>				
<b>WW</b>	<b>+66</b>				
<b>YW</b>	<b>+122</b>				
<b>MILK</b>	<b>+31</b>				
<b>BW</b>	<b>205 WT</b>	<b>WR</b>	<b>YR</b>	<b>Scrotal</b>	<b>SC</b>
72	585	98	103	36	MB +.36
<b>Dam BR</b>	<b>Dam WR</b>	<b>Dam YR</b>			<b>RE</b>
1/116	1/98	1/103			+ .74
					<b>FAT</b>
					- .001
					<b>Claw</b>
					+ .50
					<b>Angle</b>
					+ .43

**Calving Ease Score: 1**      **Front Foot Score: 4**  
**Disposition Score: 4.5**      **Hind Foot Score: 4**

- A royally bred bull with a look to match.
- He's the first Confederate son to sell.
- Dam is a fancy Dreamer first calf heifer with an ideal udder and teat placement.
- Pathfinder donor granddam is the mother to Lots 21, 22, 68 & 69.



**15 SHIPWHEEL RIGHT TIME 3508**  
 Reg:\*20918265 • Calved: 04/17/23

Sitz Right Time 8034  
**S Right Time 7861**  
 S Queen Essa 367

Leachman Right Time 338-5605 #  
 Sitz Florabelle Fanny 1293 #  
 S Chisum 6175 #  
 S Queen Essa 208 #

Pyramid Strategy 4086  
**Shipwheel Eriskay 074**  
 Shipwheel Eriskay 600 #

S A V Resource 1441 #  
 Glacial 20N BlackbirdEve 29R  
 S A V Recharge 3436 #  
 Apexette Eriskay 3060



EPDs					
<b>CED</b>	<b>+9</b>				
<b>BW</b>	<b>+8</b>				
<b>WW</b>	<b>+72</b>				
<b>YW</b>	<b>+121</b>				
<b>MILK</b>	<b>+18</b>				
<b>BW</b>	<b>205 WT</b>	<b>WR</b>	<b>YR</b>	<b>Scrotal</b>	<b>SC</b>
78	623	103	103	39.5	MB +.69
<b>Dam BR</b>	<b>Dam WR</b>	<b>Dam YR</b>			<b>RE</b>
2/99	2/98	1/103			+ .66
					<b>FAT</b>
					- .012
					<b>Claw</b>
					+ .49
					<b>Angle</b>
					+ .37

**Calving Ease Score: 3**      **Front Foot Score: 4**  
**Disposition Score: 4**      **Hind Foot Score: 4**

- Performance and maternal longevity bred into this good-looking Right Time.
- Dam is a very attractive, wedge-shaped young cow with "A" ratings in every category.
- Donor 3rd dam.
- Pathfinder donor 4th dam.
- Donor 5th dam raised 14 calves.
- 7th dam was Klint's first cow in 1984.

**14 SHIPWHEEL RIGHT TIME 3509**  
 Reg:\*20918266 • Calved: 04/16/23

Sitz Right Time 8034  
**S Right Time 7861**  
 S Queen Essa 367

Leachman Right Time 338-5605 #  
 Sitz Florabelle Fanny 1293 #  
 S Chisum 6175 #  
 S Queen Essa 208 #

LD Capitalist 316 #  
**Shipwheel Pinetop 075**  
 Shipwheel Pinetop 662

Connealy Capitalist 028 #  
 LD Dixie Erica 2053  
 S A V Regard 4863 #  
 Shipwheel Pinetop 248 #



EPDs					
<b>CED</b>	<b>+0</b>				
<b>BW</b>	<b>+3.4</b>				
<b>WW</b>	<b>+75</b>				
<b>YW</b>	<b>+128</b>				
<b>MILK</b>	<b>+29</b>				
<b>BW</b>	<b>205 WT</b>	<b>WR</b>	<b>YR</b>	<b>Scrotal</b>	<b>SC</b>
88	608	101	99	38	MB +.49
<b>Dam BR</b>	<b>Dam WR</b>	<b>Dam YR</b>			<b>RE</b>
2/96	2/99	2/101			+ .76
					<b>FAT</b>
					+ .041
					<b>Claw</b>
					+ .35
					<b>Angle</b>
					+ .37

**Calving Ease Score: 1**      **Front Foot Score: 4**  
**Disposition Score: 4**      **Hind Foot Score: 4**

- A dandy bull here chucked full of muscle. He was a standout as a calf.
- Young dam is one of the most attractive cows that resides here with "A" ratings in every category.



2024 Austin Silaging



**16 SHIPWHEEL RIGHT TIME 3504**  
 Reg:\*20927059 • Calved: 04/19/23

Sitz Right Time 8034  
**S Right Time 7861**  
 S Queen Essa 367

Leachman Right Time 338-5605 #  
 Sitz Florabelle Fanny 1293 #  
 S Chisum 6175 #  
 S Queen Essa 208 #

LD Capitalist 316 #  
**Shipwheel Chloe 033**  
 Shipwheel Chloe 845

Connealy Capitalist 028 #  
 LD Dixie Erica 2053  
 S A V Resource 1441 #  
 Shipwheel Chloe 263 #

EPDs	
CED	+10
BW	+1.0
WW	+80
YW	+136
MILK	+21

BW	205 WT	WR	YR	Scrotal	SC
85	658	109	107	34	-0.35
Dam BR		Dam WR		Dam YR	RE
2/98		2/108		2/106	+0.17

Calving Ease Score: 3    Front Foot Score: 4.25  
 Disposition Score: 4    Hind Foot Score: 4.25

- One of our favorite 7861 sons with calving ease and performance backed by great cows.
- Dam is super deep, attractive and easy fleshing. She has "A" ratings in every category.

**18 SHIPWHEEL DREAMER 3573**  
 Reg:\*20918285 • Calved: 04/15/23

S A V Renown 3439 #  
**Shipwheel Dreamer 8522**  
 WMR Pride 03

Rito 707 of Ideal 3407 7075  
 S A V Blackcap May 4136  
 WMR Timeless 458 #  
 WMR Pride 857

LT Monument 7201  
**Shipwheel Crissy 979**  
 Shipwheel Crissy 408

Baldrige Blacktop B228  
 LT Miss Wix 2242  
 Connealy Capitalist 028 #  
 Apexette Crissy 4425

EPDs	
CED	+7
BW	+3
WW	+50
YW	+90
MILK	+30

BW	205 WT	WR	YR	Scrotal	SC
67	659	100	100	36	+0.02
Dam BR		Dam WR		Dam YR	RE
2/94		2/99		1/107	+0.45

Calving Ease Score: 2    Front Foot Score: 4  
 Disposition Score: 4    Hind Foot Score: 4.5

- An attractive, low input, calving ease Dreamer son. His daughters will hold up in harsh conditions. He was born a twin. A maternal brother was a top seller in 2023 to Curry Cattle, MT.
- Dam is one of our best with "A" ratings in every category.

**17 SHIPWHEEL RIGHT TIME 3554**  
 Reg:\*20918277 • Calved: 04/20/23

Sitz Right Time 8034  
**S Right Time 7861**  
 S Queen Essa 367

Leachman Right Time 338-5605 #  
 Sitz Florabelle Fanny 1293 #  
 S Chisum 6175 #  
 S Queen Essa 208 #

LD Capitalist 316 #  
**Shipwheel Chloe 938**  
 Shipwheel Chloe 713

Connealy Capitalist 028 #  
 LD Dixie Erica 2053  
 S A V Renown 3439 #  
 DR J Ms Danny Boy M64 #

EPDs	
CED	+2
BW	+4.5
WW	+85
YW	+142
MILK	+20

BW	205 WT	WR	YR	Scrotal	SC
105	720	119	109	35.5	+0.61
Dam BR		Dam WR		Dam YR	RE
3/105		3/104		3/96	+0.53

Calving Ease Score: 1    Front Foot Score: 4  
 Disposition Score: 4    Hind Foot Score: 4

- Impressive performance stats on this good 7861 son.
- Dam is a wide based, deep bodied young cow with an excellent "316" udder.



*Swathing 101 from Austin to Bree*



## SHIPWHEEL GRAND CANYON 3611

Reg:\*20918235 • Calved: 04/22/23



S A V Rainfall 6846  
**S A V Grand Canyon 0969**  
 S A V Madame Pride 9477

Coleman Charlo 0256 #  
 S A V Blackcap May 4136  
 S A V Net Worth 4200 #  
 S A V Madame Pride 0075  
 S A V International 2020 #  
 S A V Blackcap May 4136  
 B H Rolls Royce 944  
 DR J Miss N Bar 17

S A V Universal 4038  
**Shipwheel Pinetop 701**  
 D R J Miss Rolls Royce F17 #

EPDs	
CED	+4
BW	+3.1
WW	+69
YW	+118
MILK	+29

BW	205 WT	WR	YR	Scrotal	SC	
93	704	111	114	40	MB +0.07	
Dam BR		Dam WR		Dam YR		
4/99		4/105		3/101		
					RE	+5.4
					FAT	+0.00
					Claw	+4.4
					Angle	+3.8

Calving Ease Score: 1      Front Foot Score: 4  
 Disposition Score: 4      Hind Foot Score: 4.5

- Boat loads of performance and maternal in this long spined, big-nutted rascal.
- Dam is a feminine, gentle, tidy uddered cow with small teats.
- Donor granddam 12 @106 WR.
- 3rd Dam 11 @ 102 WR.



## SHIPWHEEL DREAMER 3625

Reg:\*20918244 • Calved: 04/27/23



S A V Renown 3439 #  
**Shipwheel Dreamer 8522**  
 WMR Pride 03

Rito 707 of Ideal 3407 7075  
 S A V Blackcap May 4136  
 WMR Timeless 458 #  
 WMR Pride 857  
 Connealy Capitalist 028 #  
 Myers Queen M180  
 Garret's Nationwide 8001 #  
 DR J Miss Apex 053-K61

Myers Keystone M263  
**Shipwheel Black Pride 693 #**  
 Shipwheel Black Pride 1115

EPDs	
CED	+4
BW	+2.9
WW	+68
YW	+112
MILK	+30

BW	205 WT	WR	YR	Scrotal	SC	
92	716	113	105	35	MB +0.32	
Dam BR		Dam WR		Dam YR		
6/98		6/106		6/101		
					RE	+0.86
					FAT	+0.021
					Claw	+0.40
					Angle	+0.45

Calving Ease Score: 1      Front Foot Score: 4  
 Disposition Score: 4.5      Hind Foot Score: 4

- A nice fronted, attractive made, Dreamer son.
- Pathfinder dam just flat gets it done every year.

# THE HD50K™ FOR ANGUS



HD50K™ FOR ANGUS IS A GENOTYPING TECHNOLOGY FROM ZOETIS DESIGNED FOR ANGUS SEEDSTOCK PRODUCERS AND FULLY ENDORSED BY THE AMERICAN ANGUS ASSOCIATION AND ANGUS GENETICS, INC.

HD50K™ for Angus replaces i50K™ and the previous version of HD 50K™, and represents an advancement in Angus genotyping technology.

### ZOETIS PROVIDES COMPREHENSIVE GENETIC AND MANAGEMENT SOLUTIONS FOR BEEF PRODUCERS:

- 17 staff Ph.D. geneticists driving cutting edge research and development as well as field and customer support across the livestock business
- First to market with novel wellness traits in dairy cows and calves
- Development of innovative decision support tools
- Unmatched technical support and customer service

### SELECT, MATE AND MARKET ANGUS SEEDSTOCK WITH CONFIDENCE:

- Commercial bull buyers increasingly request GE-EPDs
- HD50K™ for Angus tested bull batteries enable Sire Match for GeneMax® Advantage™ tested heifers
- Reduce selection and breeding mistakes—with HD50K™ for Angus



HD50K™ for Angus is available to American Angus Association members through Angus Genetics, Inc. and may be purchased online through the AAA Login site.

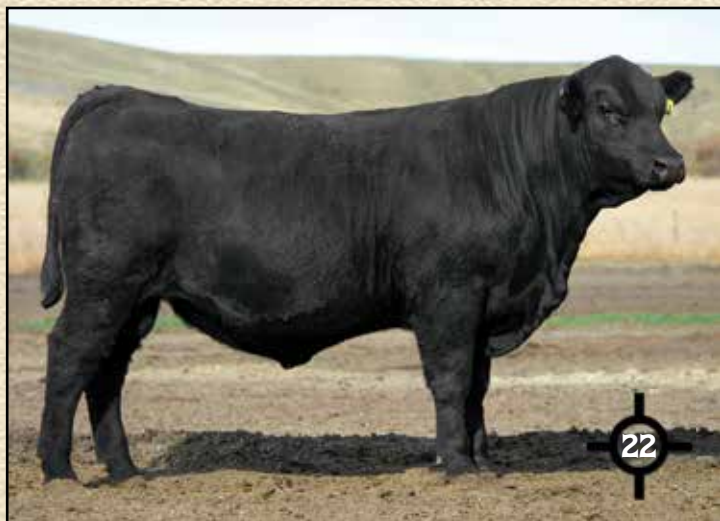
HD50K™ for Angus: The people, the products, and services you have always relied on.

All trademarks are the property of Zoetis Services LLC or a related company or a licensee or its affiliated entities. GeneMax is a registered trademark of Angus Genetics, Inc. ©2019 Zoetis Services, LLC. All rights reserved. 50K-00124



# LOTS 21 & 22 - FULL ET BROTHERS

- Proud of this pair of flush brothers by Dreamer.
- Dam is a very attractive cow that grabs the attention of many visitors. She raised Shipwheel Essential, our top selling bull in 2020 to Shane and Vicki Schwenke, MT. Full brothers to Lot's 68 & 69.



## 21 SHIPWHEEL DREAMER 3687

Reg: +\*20927057 • Calved: 04/22/23

S A V Renown 3439 #  
Shipwheel Dreamer 8522  
WMR Pride 03

Rito 707 of Ideal 3407 7075  
S A V Blackcap May 4136  
WMR Timeless 458 #  
WMR Pride 857

LT Regions 4110  
Shipwheel Pinetop 720 #  
Shipwheel Pinetop 572

Koupal Advance 28 #  
LT Beauty 8398  
Sitz Far & Wide 6908  
Shipwheel Pinetop 059

BW	205 WT	WR	YR	Scrotal	EPDs
86	627	100	100	37.5	CED +6
Dam BR					BW +1.9
5/104					WW +57
Dam WR					YW +105
5/103					MILK +33
Dam YR					SC +1.09
4/103					MB +.46
					RE +.80
					FAT +.017
					Claw +.49
					Angle +.49

Calving Ease Score: 2    Front Foot Score: 4  
Disposition Score: 4.5    Hind Foot Score: 4

## 22 SHIPWHEEL DREAMER 3686

Reg: +\*20927056 • Calved: 04/26/23

S A V Renown 3439 #  
Shipwheel Dreamer 8522  
WMR Pride 03

Rito 707 of Ideal 3407 7075  
S A V Blackcap May 4136  
WMR Timeless 458 #  
WMR Pride 857

LT Regions 4110  
Shipwheel Pinetop 720 #  
Shipwheel Pinetop 572

Koupal Advance 28 #  
LT Beauty 8398  
Sitz Far & Wide 6908  
Shipwheel Pinetop 059

BW	205 WT	WR	YR	Scrotal	EPDs
75	664	100	100	37.5	CED +6
Dam BR					BW +1.8
5/104					WW +64
Dam WR					YW +128
5/103					MILK +29
Dam YR					SC +1.17
4/103					MB +.35
					RE +.75
					FAT -.006
					Claw +.55
					Angle +.40

Calving Ease Score: 2    Front Foot Score: 4  
Disposition Score: 4.5    Hind Foot Score: 4



Thanks to B Diamond Cattle Services



Shipwheel Pinetop 720 - Dam of Lots 21 & 22, 68 & 69

# LOTS 23 & 24 - FULL ET BROTHERS

- A dandy pair of flush brothers that catch your eye in the pen. They are clean fronted, long spined with good muscle shape.
- Dam is a super attractive, long bodied, easy fleshing, nice uddered cow.
- Full ET brother to Lot 72 and maternal brothers to Lot 83.



## 23 SHIPWHEEL GRAND CANYON 3623

Reg: +\*20927042 • Calved: 04/23/23

S A V Rainfall 6846  
S A V Grand Canyon 0969  
S A V Madame Pride 9477

Coleman Charlo 0256 #  
S A V Blackcap May 4136  
S A V Net Worth 4200 #  
S A V Madame Pride 0075  
S Chisum 6175 #  
Dr J Ms Wide Track 374 M15  
Sitz Rainmaker 6536  
Apexette Chloe 3063

Shipwheel Montana 2600  
Shipwheel Chloe 6117  
Shipwheel Chloe 964

EPDs	
CED	+6
BW	+2.2
WW	+67
YW	+115
MILK	+23
SC	+1.37
MB	+0.45
RE	+0.31
FAT	+0.086
Claw	+0.45
Angle	+0.56

BW	205 WT	WR	YR	Scrotal
82	699	100	100	39
Dam BR	Dam WR	Dam YR		
5/98	5/107	5/102		

Calving Ease Score: 1    Front Foot Score: 4  
Disposition Score: 3.5    Hind Foot Score: 4

## 24 SHIPWHEEL GRAND CANYON 3588

Reg: +\*20927041 • Calved: 04/22/23

S A V Rainfall 6846  
S A V Grand Canyon 0969  
S A V Madame Pride 9477

Coleman Charlo 0256 #  
S A V Blackcap May 4136  
S A V Net Worth 4200 #  
S A V Madame Pride 0075  
S Chisum 6175 #  
Dr J Ms Wide Track 374 M15  
Sitz Rainmaker 6536  
Apexette Chloe 3063

Shipwheel Montana 2600  
Shipwheel Chloe 6117  
Shipwheel Chloe 964

EPDs	
CED	+7
BW	+2.4
WW	+58
YW	+113
MILK	+31
SC	+1.07
MB	+0.60
RE	+0.11
FAT	+0.091
Claw	+0.25
Angle	+0.36

BW	205 WT	WR	YR	Scrotal
83	587	100	100	36.5
Dam BR	Dam WR	Dam YR		
5/98	5/107	5/102		

Calving Ease Score: 1    Front Foot Score: 4  
Disposition Score: 4.5    Hind Foot Score: 4



## 25 SHIPWHEEL RENOWN 3529

Reg: +\*20927071 • Calved: 03/21/23

S A V Renown 3439 #  
Ideal 0026 Rito of REN  
Ideal 7005 of 0116 Erilou

Rito 707 of Ideal 3407 7075  
S A V Blackcap May 4136  
Coleman Emblazon 0116  
Ideal 5724 of 9524 Erilou  
Basin Rainmaker 4404 #  
Basin Rainmaker 2704  
Basin Joy 1036  
TC Forthright 340 #  
Shipwheel Crissy 4142

Basin Rainmaker 4404 #  
Shipwheel Crissy 156  
Shipwheel Crissy 623

EPDs	
CED	+3
BW	+1.8
WW	+70
YW	+122
MILK	+23
SC	+0.90
MB	+0.20
RE	+0.62
FAT	-0.003
Claw	+0.31
Angle	+0.35

BW	205 WT	WR	YR	Scrotal
58	614	103	109	37
Dam BR	Dam WR	Dam YR		
1/96	1/103	1/109		

Calving Ease Score: 1    Front Foot Score: 4.5  
Disposition Score: 4.5    Hind Foot Score: 4.5

- Really like the look of this royally bred bull's clean front, good feet, extra length of spine and muscle shape. Seriously thinking about using him back in our program. You will see a lot more from 0026.
- First calf heifer dam is gorgeous with a flawless udder and teat size.



## SHIPWHEEL RENOWN 3544

Reg:\*20927077 • Calved: 04/01/23



S A V Renown 3439 #  
Ideal 0026 Rito of REN  
Ideal 7005 of 0116 Erilou

Rito 707 of Ideal 3407 7075  
S A V Blackcap May 4136  
Coleman Emblazon 0116  
Ideal 5724 of 9524 Erilou  
Musgrave 316 Stunner #  
Pine Coulee Ever Entense X64  
Shipwheel Upward 2517  
Shipwheel Pinetop 367

Pine Coulee Drifter G372  
Shipwheel Pinetop 1157  
Shipwheel Pinetop 519 #

EPDs	
CED	-4
BW	+3.3
WW	+68
YW	+133
MILK	+35
SC	+1.55
MB	+3.7
RE	+7.3
FAT	+0.86
Claw	+3.6
Angle	+5.1

BW	205 WT	WR	YR	Scrotal
71	630	106	113	37
Dam BR		Dam WR		Dam YR
1/114		1/106		1/113

Calving Ease Score: 1    Front Foot Score: 4.5  
Disposition Score: 4    Hind Foot Score: 4.5

- Excellent ratings on this uniquely bred bull's phenotype and feet. Strong cow family here.
- First calf heifer dam is stunning with an excellent udder and off to a good start.
- Pathfinder donor granddam.



## SHIPWHEEL RENOWN 3530

Reg:\*20927072 • Calved: 03/25/23



S A V Renown 3439 #  
Ideal 0026 Rito of REN  
Ideal 7005 of 0116 Erilou

Rito 707 of Ideal 3407 7075  
S A V Blackcap May 4136  
Coleman Emblazon 0116  
Ideal 5724 of 9524 Erilou  
Basin Rainmaker 2704  
Basin Joy 1036  
CCAR Uncommon Z317  
Shipwheel Georgina 151

Basin Rainmaker 4404 #  
Shipwheel Georgina 159  
Shipwheel Georgina 698

EPDs	
CED	+6
BW	+1.2
WW	+63
YW	+113
MILK	+29
SC	+1.00
MB	+4.5
RE	+8.9
FAT	-.009
Claw	+4.0
Angle	+4.7

BW	205 WT	WR	YR	Scrotal
64	656	110	107	36
Dam BR		Dam WR		Dam YR
1/104		1/110		1/107

Calving Ease Score: 2    Front Foot Score: 4.5  
Disposition Score: 4.5    Hind Foot Score: 4

- A moderate framed calving ease bull with very good feet and phenotype backed by a strong cow family.
- First calf heifer dam is off to an impressive start.
- Donor 3rd dam.



## SHIPWHEEL COALITION 3542

Reg:\*20927076 • Calved: 04/03/23



U-2 Coalition 206C #  
Shipwheel Coalition 1517  
Shipwheel Elba 959

HF Syndicate 213Z  
U2 Erelite 109Z  
LD Capitalist 316 #  
Shipwheel Elba 790  
Basin Rainmaker 2704  
Basin Joy 1036  
K A Eisenhower  
Shipwheel Enchantress 6130

Basin Rainmaker 4404 #  
Shipwheel Enchantress 1129  
Shipwheel Enchantress 8106

EPDs	
CED	+0
BW	+3.0
WW	+74
YW	+131
MILK	+32
SC	+1.16
MB	+4.3
RE	+7.0
FAT	+0.020
Claw	+4.7
Angle	+5.2

BW	205 WT	WR	YR	Scrotal
57	608	102	102	36
Dam BR		Dam WR		Dam YR
1/94		1/102		1/102

Calving Ease Score: 1    Front Foot Score: 4  
Disposition Score: 4.5    Hind Foot Score: 4

- A good-looking Confederate son here with extra cow power behind him.
- First calf heifer dam carries a tick more frame and an excellent udder.
- Granddam is the mother to Lot 60.
- Donor foundation 4th dam.



## 29 SHIPWHEEL DREAMER 3515

Reg:\*20918268 • Calved: 04/20/23



S A V Renown 3439 #  
**Shipwheel Dreamer 8522**  
 WMR Pride 03

Rito 707 of Ideal 3407 7075  
 S A V Blackcap May 4136  
 WMR Timeless 458 #  
 WMR Pride 857

Ideal 3614 of 9524 Blckbrd  
**Shipwheel Enchantress 0115**  
 Shipwheel Enchantress 4114

Ideal 9524 of 5570 6809 #  
 Ideal 1721 of 6051 Blackbird  
 Sitz Far & Wide 6908  
 Shipwheel Enchantress 925

EPDs	
CED	+7
BW	+4
WW	+58
YW	+102
MILK	+33
SC	+5.7
MB	+3.2
RE	+4.3
FAT	+0.45
Claw	+4.4
Angle	+5.1

BW	205 WT	WR	YR	Scrotal	SC
86	603	100	99	34.5	MB +3.2
Dam BR		Dam WR		Dam YR	
2/103		2/99		2/101	
				FAT +0.45	

Calving Ease Score: 2 Front Foot Score: 4  
 Disposition Score: 4.5 Hind Foot Score: 4

- Another deep, ribbed, soft-made, gentle Dreamer son with very good ratings.
- Dam is a pretty, long bodied, wedge-shaped, young cow that bred back A.I. with a full brother.

## 30 SHIPWHEEL DREAMER 3517

Reg:\*20918270 • Calved: 04/12/23



S A V Renown 3439 #  
**Shipwheel Dreamer 8522**  
 WMR Pride 03

Rito 707 of Ideal 3407 7075  
 S A V Blackcap May 4136  
 WMR Timeless 458 #  
 WMR Pride 857

BPF DR J 2110  
**Shipwheel Black Pride 0117**  
 Shipwheel Black Pride 277

Shipwheel Dr J In Focus 9560  
 BPF Forever Lady 651  
 Connealy Right Answer 746 #  
 Shipwheel Black Pride 0146

EPDs	
CED	+10
BW	+1
WW	+66
YW	+113
MILK	+34
SC	+1.19
MB	+1.1
RE	+9.3
FAT	+0.24
Claw	+4.4
Angle	+4.3

BW	205 WT	WR	YR	Scrotal	SC
82	583	97	104	38.5	MB +1.1
Dam BR		Dam WR		Dam YR	
2/97		2/96		2/101	
				FAT +0.24	

Calving Ease Score: 3 Front Foot Score: 4  
 Disposition Score: 4 Hind Foot Score: 4

- A calving ease Dreamer with extra substance and do-ability.
- Young dam is tidy uddered and feminine.
- Granddam is the mother to Shipwheel Signature 4541.

## 31 SHIPWHEEL RIGHT TIME 3599

Reg:\*20918228 • Calved: 04/22/23



Sitz Right Time 8034  
**S Right Time 7861**  
 S Queen Essa 367

Leachman Right Time 338-5605 #  
 Sitz Florabelle Fanny 1293 #  
 S Chisum 6175 #  
 S Queen Essa 208 #

Coleman Knight 209  
**Shipwheel Pride 815 #**  
 WMR Pride 03

R R Rito 707 #  
 Coleman Donna 714  
 WMR Timeless 458 #  
 WMR Pride 857

EPDs	
CED	-9
BW	+6.8
WW	+84
YW	+130
MILK	+19
SC	+1.39
MB	+2.2
RE	+7.5
FAT	-0.11
Claw	+4.1
Angle	+3.5

BW	205 WT	WR	YR	Scrotal	SC
95	740	117	106	39	MB +2.2
Dam BR		Dam WR		Dam YR	
4/106		4/107		3/106	
				FAT -0.11	

Calving Ease Score: 1 Front Foot Score: 4  
 Disposition Score: 4.5 Hind Foot Score: 4

- A little more frame and length in this guy. He was a standout from the start.
- Pathfinder dam keeps inching her way closer to the donor pen.
- Pride 03 granddam is the dam of Dreamer.

## 32 SHIPWHEEL RIGHT TIME 3551

Reg:\*20918274 • Calved: 04/21/23



Sitz Right Time 8034  
**S Right Time 7861**  
 S Queen Essa 367

Leachman Right Time 338-5605 #  
 Sitz Florabelle Fanny 1293 #  
 S Chisum 6175 #  
 S Queen Essa 208 #

Shipwheel Ideal 4223 7571  
**Shipwheel Enchantress 924**  
 Shipwheel Enchantress 742 #

Ideal 4223 of 1168 Blkbrd  
 Shipwheel Lady 569  
 Shipwheel Signature 4541  
 Shipwheel Enchantress 558

EPDs	
CED	+7
BW	+8
WW	+72
YW	+121
MILK	+30
SC	+1.64
MB	+4.6
RE	+2.6
FAT	+0.80
Claw	+3.8
Angle	+3.1

BW	205 WT	WR	YR	Scrotal	SC
88	634	105	106	38.5	MB +4.6
Dam BR		Dam WR		Dam YR	
2/87		2/102		2/101	
				FAT +0.80	

Calving Ease Score: 2 Front Foot Score: 4  
 Disposition Score: 4.5 Hind Foot Score: 4

- A good looking, long spined, gentle bull.
- Young dam is pretty, deep and long bodied with an excellent udder.
- Pathfinder granddam.



## 33 SHIPWHEEL GRAND CANYON 3612

Reg:\*20918236 • Calved: 04/23/23



S A V Rainfall 6846  
**S A V Grand Canyon 0969**  
 S A V Madame Pride 9477

Coleman Charlo 0256 #  
 S A V Blackcap May 4136  
 S A V Net Worth 4200 #  
 S A V Madame Pride 0075

Shipwheel Upward 2517  
**Shipwheel Chloe 743**  
 Shipwheel Chloe 5124

Sitz Upward 307R #  
 Shipwheel Enchantress 8184  
 CCAR Uncommon Z317  
 Shipwheel Chloe 916

EPDs	
CED	-1
BW	+3.0
WW	+68
YW	+121
MILK	+33
SC	+1.67
MB	+9.1
RE	+3.4
FAT	+0.61
Claw	+3.4
Angle	+3.7

BW	205 WT	WR	YR	Scrotal	SC
88	655	104	110	39.5	MB +9.1
Dam BR		Dam WR		Dam YR	
5/93		5/102		5/104	
				FAT +0.61	

Calving Ease Score: 1 Front Foot Score: 4  
 Disposition Score: 4 Hind Foot Score: 4

- Plenty of performance and maternal in this gentle bull with added marbling. A maternal brother was a top seller in 2023 to Obrecht's, MT.
- Dam has been an outstanding producer.
- A son was a top seller to Ox Bow Ranch, MT in 2022.
- A Grandson was a top seller to John Peebles, MT in 2023 with a semen interest later selling to Kraye Angus, NE.

## 34 SHIPWHEEL GRAND CANYON 3634

Reg:\*20918249 • Calved: 04/27/23



S A V Rainfall 6846  
S A V Grand Canyon 0969  
S A V Madame Pride 9477

Coleman Charlo 0256 #  
S A V Blackcap May 4136  
S A V Net Worth 4200 #  
S A V Madame Pride 0075  
S Chisum 6175 #  
Dr J Ms Wide Track 374 M15  
Sitz Far & Wide 6908  
DR J Miss Apex I16

EPDs	
CED	+2
BW	+2.3
WW	+71
YW	+127
MILK	+21
SC	+2.11
MB	+4.45
RE	+3.32
FAT	+0.43
Claw	+3.38
Angle	+5.53

Shipwheel Montana 2600  
Shipwheel Eola 533  
Shipwheel Eola 396

BW	205 WT	WR	YR	Scrotal
71	662	105	106	37
Dam BR	Dam WR	Dam YR		SC
7/91	7/105	6/104		FAT

Calving Ease Score: 1 Front Foot Score: 4  
Disposition Score: 4.5 Hind Foot Score: 4

- Nice structure and phenotype in this dandy Grand Canyon.
- Dam has been a rock-solid producer year after year.



## 35 SHIPWHEEL GRAND CANYON 3631

Reg:\*20918247 • Calved: 04/21/23



S A V Rainfall 6846  
S A V Grand Canyon 0969  
S A V Madame Pride 9477

Coleman Charlo 0256 #  
S A V Blackcap May 4136  
S A V Net Worth 4200 #  
S A V Madame Pride 0075  
Shipwheel Dr J In Focus 9560  
BPF Forever Lady 651  
S A V Iron Mountain 8066 #  
Dr J Ms Apex 053 L35

EPDs	
CED	+6
BW	+2.8
WW	+81
YW	+142
MILK	+31
SC	+1.27
MB	+3.36
RE	+6.68
FAT	+0.15
Claw	+3.39
Angle	+4.42

BPF DR J 2110  
Shipwheel Enchantress 512  
Shipwheel Enchantress 225

BW	205 WT	WR	YR	Scrotal
73	715	113	111	38
Dam BR	Dam WR	Dam YR		SC
7/91	7/103	5/103		FAT

Calving Ease Score: 1 Front Foot Score: 4  
Disposition Score: 4 Hind Foot Score: 4

- Plenty of performance and maternal power in this guy. He's been a standout of a bull all along. A maternal brother was a top seller in 2023 to Shane Dellwo, MT.
- Dam is super deep, soggy and easy fleshing with a nice udder. She's one of the best "Dr. J" daughters we have. Potential donor cow.

## 37 SHIPWHEEL GRAND CANYON 3591

Reg:\*20918221 • Calved: 04/22/23



S A V Rainfall 6846  
S A V Grand Canyon 0969  
S A V Madame Pride 9477

Coleman Charlo 0256 #  
S A V Blackcap May 4136  
S A V Net Worth 4200 #  
S A V Madame Pride 0075  
LD Capitalist 316 #  
MA Black Bess 642 #  
Shipwheel Chinook #  
Shipwheel Chloe 841

EPDs	
CED	+9
BW	-2
WW	+52
YW	+107
MILK	+43
SC	+1.38
MB	+6.69
RE	+2.24
FAT	+0.41
Claw	+3.34
Angle	+3.39

Musgrave Fundamental  
Shipwheel Chloe 9138  
Shipwheel Chloe 017

BW	205 WT	WR	YR	Scrotal
76	656	104	105	38.5
Dam BR	Dam WR	Dam YR		SC
3/95	3/100	2/103		FAT

Calving Ease Score: 3 Front Foot Score: 4  
Disposition Score: 4 Hind Foot Score: 4

- A good calving ease Grand Canyon with a little more frame.
- Young dam is feminine and attractive with a nice udder. High production cows in this family.

## 36 SHIPWHEEL GRAND CANYON 3647

Reg:\*20918257 • Calved: 04/22/23



S A V Rainfall 6846  
S A V Grand Canyon 0969  
S A V Madame Pride 9477

Coleman Charlo 0256 #  
S A V Blackcap May 4136  
S A V Net Worth 4200 #  
S A V Madame Pride 0075  
S Chisum 6175 #  
S Beaufort 3145  
Master Guru 0641  
DR J Miss Trav 722 B17

EPDs	
CED	+0
BW	+2.9
WW	+55
YW	+93
MILK	+18
SC	+1.05
MB	+3.37
RE	+3.30
FAT	+0.59
Claw	+3.34
Angle	+4.40

S John Wayne  
Shipwheel Pinetop 365  
DR J Miss Guru I6

BW	205 WT	WR	YR	Scrotal
71	673	106	103	36.5
Dam BR	Dam WR	Dam YR		SC
9/104	9/98	7/100		FAT

Calving Ease Score: 3 Front Foot Score: 4.25  
Disposition Score: 4 Hind Foot Score: 4

- Powerful cow family behind this good Grand Canyon with a little more frame.
- Dam is currently 11 and still in production and 3rd dam to Shipwheel Confederate.

## 38 SHIPWHEEL RIGHT TIME 3640

Reg:\*20918253 • Calved: 04/22/23



Sitz Right Time 8034  
S Right Time 7861  
S Queen Essa 367

Leachman Right Time 338-5605 #  
Sitz Florabelle Fanny 1293 #  
S Chisum 6175 #  
S Queen Essa 208 #  
Rito 707 of Ideal 3407 7075  
S A V Blackcap May 4136  
H A Image Maker 0415 #  
DR J Miss 34 Time D27 #

EPDs	
CED	+5
BW	+2.8
WW	+79
YW	+135
MILK	+25
SC	+1.53
MB	+9.96
RE	+3.39
FAT	-0.15
Claw	+3.39
Angle	+4.41

S A V Resource 1441 #  
Shipwheel Pauline 5116  
Shipwheel Pauline 881

BW	205 WT	WR	YR	Scrotal
103	740	117	110	38.5
Dam BR	Dam WR	Dam YR		SC
7/103	7/103	5/104		FAT

Calving Ease Score: 1 Front Foot Score: 4  
Disposition Score: 4 Hind Foot Score: 4

- Impressive performance in this good 7861 son with a little more frame. He came in heavy off grass.
- Dam is deep, soggy and free moving with a nice udder. She never misses.



Sale Day

SHIPWHEEL CATTLE COMPANY

WELCOME!





2023



## 39 SHIPWHEEL RIGHT TIME 3598

Reg:\*20918227 • Calved: 04/22/23



Sitz Right Time 8034  
S Right Time 7861  
S Queen Essa 367

Leachman Right Time 338-5605 #  
Sitz Florabelle Fanny 1293 #  
S Chisum 6175 #  
S Queen Essa 208 #  
S A V 004 Density 4336 #  
Falcon Blackbird 6071  
Sitz Upward 307R #  
Apex Eriskay 641

EPDs	
CED	+12
BW	+1.2
WW	+75
YW	+131
MILK	+28

BW	205 WT	WR	YR	Scrotal	SC
78	649	103	102	39	+2.20
Dam BR	Dam WR	Dam YR	RE		
4/98	4/104	3/104	+7.1		
			FAT		+0.26

Calving Ease Score: 3 Front Foot Score: 4  
Disposition Score: 4 Hind Foot Score: 4

- An interesting pedigree in this good calving ease 7861 with extra length. His daughters should be fantastic.
- Young dam is one of our good Torque daughters that brings a good one in every year. She just missed Pathfinder.



## 40 SHIPWHEEL DREAMER 3600

Reg:\*20918229 • Calved: 04/25/23



S A V Renown 3439 #  
Shipwheel Dreamer 8522  
WMR Pride 03

Rito 707 of Ideal 3407 7075  
S A V Blackcap May 4136  
WMR Timeless 458 #  
WMR Pride 857

EPDs	
CED	+3
BW	+2.4
WW	+70
YW	+126
MILK	+29

CCAR Uncommon Z317  
Shipwheel Chloe 851  
Shipwheel Chloe 339

Sitz Uncommon #  
CCAR Maiden U923  
Sitz Far & Wide 6908  
Apex Chloe 648

BW	205 WT	WR	YR	Scrotal	SC
85	662	105	103	39	+1.60
Dam BR	Dam WR	Dam YR	RE		
4/90	4/99	4/99	+1.05		
			FAT		+0.03

Calving Ease Score: 1 Front Foot Score: 4  
Disposition Score: 4 Hind Foot Score: 4

- Another good, soft made Dreamer son with extra substance and depth.
- Many generations of consistent producing, easy fleshing, pretty cows all the way back to the 7th dam that was Klint's 4-H show heifer in 1988.

## 42 SHIPWHEEL DREAMER 3619

Reg:\*20918242 • Calved: 04/27/23



S A V Renown 3439 #  
Shipwheel Dreamer 8522  
WMR Pride 03

Rito 707 of Ideal 3407 7075  
S A V Blackcap May 4136  
WMR Timeless 458 #  
WMR Pride 857

EPDs	
CED	+4
BW	+1.5
WW	+64
YW	+117
MILK	+17

Vision Unanimous 1418 #  
Shipwheel Pinetop 609  
DR J Miss Guru I6

Visiontopline Royal Stockman  
Vision Edella 665 #  
Master Guru 0641  
DR J Miss Trav 722 B17

BW	205 WT	WR	YR	Scrotal	SC
78	640	101	104	36	+5.1
Dam BR	Dam WR	Dam YR	RE		
6/91	6/94	3/100	+7.7		
			FAT		-0.02

Calving Ease Score: 1 Front Foot Score: 4.25  
Disposition Score: 4 Hind Foot Score: 4

- A good, solid Dreamer son that will hold up in tough conditions.
- Dam is an easy fleshing, excellent uddered cow with great feet. Powerful cow family here.
- Donor granddam.
- 3rd dam 12 @107 WR.
- 4th dam 11@ 102 WR.

## 41 SHIPWHEEL DREAMER 3632

Reg:\*20918248 • Calved: 04/25/23



S A V Renown 3439 #  
Shipwheel Dreamer 8522  
WMR Pride 03

Rito 707 of Ideal 3407 7075  
S A V Blackcap May 4136  
WMR Timeless 458 #  
WMR Pride 857

EPDs	
CED	+1
BW	+3.7
WW	+63
YW	+109
MILK	+23

Connealy Packer 547 #  
Shipwheel Eriskay 543 #  
Shipwheel Eriskay 150

Feltons Meat Packer 62 #  
Bestrelle of Conanga 539  
Connealy Impression #  
Apex Eriskay 676

BW	205 WT	WR	YR	Scrotal	SC
85	669	106	103	37	+1.07
Dam BR	Dam WR	Dam YR	RE		
7/99	7/105	6/106	+2.3		
			FAT		+0.68

Calving Ease Score: 1 Front Foot Score: 4  
Disposition Score: 4.5 Hind Foot Score: 4

- A good, gentle Dreamer with more frame from the great Eriskay cow family known for impeccable udders and longevity.
- Pathfinder dam is one of our very best and cherished "Packer" daughters that never misses.





## 43 SHIPWHEEL GRAND CANYON 3643

Reg:\*20918255 • Calved: 04/25/23



SA V Rainfall 6846  
SA V Grand Canyon 0969  
SA V Madame Pride 9477

Coleman Charlo 0256 #  
SA V Blackcap May 4136  
SA V Net Worth 4200 #  
SA V Madame Pride 0075  
Connealy Consensus #  
Brazila of Conanga 3991 839A  
Sitz Far & Wide 6908  
Shipwheel Eola 874

EPDs	
CED	+10
BW	+6
WW	+49
YW	+85
MILK	+34
SC	+1.49
MB	+89
RE	+0.03
FAT	+100
Claw	+34
Angle	+34

Connealy Earnan 076E #  
Shipwheel Eola 418  
Shipwheel Eola 1108

BW	205 WT	WR	YR	Scrotal	SC
81	636	101	101	37	MB +89
Dam BR		Dam WR		Dam YR	
6/97		6/99		6/99	

Calving Ease Score: 3    Front Foot Score: 4  
Disposition Score: 4    Hind Foot Score: 4

- A good-looking calving ease bull with nice muscle expression down his top and quarter with a superb front end.
- Dam is a consistently producing cow.
- Granddam is currently 13 and still in production.



## 44 SHIPWHEEL GRAND CANYON 3593

Reg:\*20918223 • Calved: 04/30/23



SA V Rainfall 6846  
SA V Grand Canyon 0969  
SA V Madame Pride 9477

Coleman Charlo 0256 #  
SA V Blackcap May 4136  
SA V Net Worth 4200 #  
SA V Madame Pride 0075  
Rito 707 of Ideal 3407 7075  
SA V Blackcap May 4136  
Apex Long Distance 102  
Shipwheel Pinetop 878

EPDs	
CED	+3
BW	+1.8
WW	+70
YW	+117
MILK	+29
SC	+1.22
MB	+44
RE	+49
FAT	+097
Claw	+39
Angle	+45

SA V Resource 1441 #  
Shipwheel Pinetop 897  
Shipwheel Pinetop 4119

BW	205 WT	WR	YR	Scrotal	SC
85	649	103	99	38	MB +44
Dam BR		Dam WR		Dam YR	
4/106		4/104		4/102	

Calving Ease Score: 1    Front Foot Score: 4.5  
Disposition Score: 4    Hind Foot Score: 4.5

- Excellent ratings on this good bull's phenotype and feet. He will catch your eye. A maternal brother was a top seller in 2023 to Guy Bradley, MT.
- Dam is a moderate framed, densely made, young cow doing a fantastic job.



## 45 SHIPWHEEL GRAND CANYON 3642

Reg:\*20918254 • Calved: 04/28/23



SA V Rainfall 6846  
SA V Grand Canyon 0969  
SA V Madame Pride 9477

Coleman Charlo 0256 #  
SA V Blackcap May 4136  
SA V Net Worth 4200 #  
SA V Madame Pride 0075  
Connealy Consensus #  
Brazila of Conanga 3991 839A  
Kesslers Frontman R001 #  
Shipwheel Eriskay 922

EPDs	
CED	+0
BW	+3.9
WW	+66
YW	+110
MILK	+24
SC	+28
MB	+39
RE	+70
FAT	+038
Claw	+32
Angle	+34

Connealy Earnan 076E #  
Shipwheel Eriskay 433 #  
Shipwheel Eriskay 173

BW	205 WT	WR	YR	Scrotal	SC
82	591	94	99	34.5	MB +39
Dam BR		Dam WR		Dam YR	
8/95		8/101		8/100	

Calving Ease Score: 1    Front Foot Score: 4  
Disposition Score: 4    Hind Foot Score: 4

- Another good-looking Grand Canyon bull that we are proud of. A maternal brother was a top seller in 2023 to Clinton Cox, MT.
- Pathfinder dam is currently 10 yrs old and has been a rock-solid cow.



## 46 SHIPWHEEL DIGNITY 3514

Reg:\*20927067 • Calved: 04/21/23

Sitz Resilient 10208  
SITZ Dignity 599J  
SITZ Barbaramere Nell 53F #

Sitz Stellar 726D #  
Sitz Miss Burgess 1856  
Sitz Invasion 574D  
SITZ Barbaramere Nell 105D  
HF Syndicate 213Z  
U2 Erelite 109Z  
Shipwheel Resource 5621  
WMR Pride 03

U-2 Coalition 206C #  
Shipwheel Pride 026  
Shipwheel Pride 817

EPDs					
CED	+12				
BW	-.1				
WW	+70				
YW	+123				
MILK	+26				
BW	205 WT	WR	YR	Scrotal	SC
80	657	109	106	38	MB +.42
Dam BR		Dam WR		Dam YR	
2/94		2/103		2/100	
FAT +1.09					
Claw +.26					
Angle +.35					

Calving Ease Score: 3 Front Foot Score: 4  
Disposition Score: 4 Hind Foot Score: 4

- A well rounded, good-looking, calving ease bull.
- Young dam is super quiet, easy fleshing and off to a good start.
- 3rd dam is mother to Shipwheel Dreamer.



## 47 SHIPWHEEL RENOWN 3644

Reg:\*20927036 • Calved: 05/18/23

S A V Renown 3439 #  
Ideal 0026 Rito of REN  
Ideal 7005 of 0116 Eريلou

Rito 707 of Ideal 3407 7075  
S A V Blackcap May 4136  
Coleman Emblazon 0116  
Ideal 5724 of 9524 Eريلou  
Felltons Meat Packer 62 #  
Bestrelle of Conanga 539  
Connealy Forefront #  
H C Miss Crissy 501

Connealy Packer 547 #  
Shipwheel Crissy 403  
Apexette Crissy 4425

EPDs					
CED	+3				
BW	+2.7				
WW	+65				
YW	+117				
MILK	+32				
BW	205 WT	WR	YR	Scrotal	SC
90	643	102	103	38	MB +.26
Dam BR		Dam WR		Dam YR	
8/97		8/98		7/100	
FAT +.066					
Claw +.41					
Angle +.58					

Calving Ease Score: 1 Front Foot Score: 4.5  
Disposition Score: 4 Hind Foot Score: 4.5

- A good looking, proud, athletic bull with very good feet. His daughters will be tremendous. A maternal brother was a top seller in 2023 to Keith Oetken, NE.
- Embryo dam is currently 10 years old and still carries an impeccable udder and feet.
- Donor granddam.

## 48 SHIPWHEEL RENOWN 3648

Reg:\*20927037 • Calved: 06/12/23

S A V Renown 3439 #  
Ideal 0026 Rito of REN  
Ideal 7005 of 0116 Eريلou

Rito 707 of Ideal 3407 7075  
S A V Blackcap May 4136  
Coleman Emblazon 0116  
Ideal 5724 of 9524 Eريلou  
Connealy Forefront #  
Six Belles Forever Lady 015  
H A Image Maker 0415 #  
DR J Miss D J H 019 B93

Mytty ForeFront 77P  
Shipwheel Enchantress 353  
Shipwheel Enchantress 968

EPDs					
CED	+8				
BW	-.6				
WW	+60				
YW	+111				
MILK	+31				
BW	205 WT	WR	YR	Scrotal	SC
83	619	98	104	36	MB +.04
Dam BR		Dam WR		Dam YR	
9/100		9/100		9/101	
FAT +.38					
Claw +.55					
Angle +.50					

Calving Ease Score: 3 Front Foot Score: 4  
Disposition Score: 4 Hind Foot Score: 4

- A younger bull that has performed very well from a high production cow family.
- Dam is an excellent uddered, small teated, 11 yr old cow still in production. Have seriously considered flushing her.

## 49 SHIPWHEEL CAPITALIST 3576

Reg:\*20918214 • Calved: 05/13/23

LD Capitalist 316 #  
Braun Creek Capitalist 938  
Braun Creek Merle 718

Connealy Capitalist 028 #  
LD Dixie Erica 2053  
Shipwheel Far & Wide 1558  
Braun Creek Merle 556  
K A Eisenhower  
Shipwheel Primrose 686  
Pyramid Strategy 4086  
Shipwheel Black Pride 424

Shipwheel Eisenhower 8625  
Shipwheel Black Pride 047  
Shipwheel Black Pride 8117

EPDs					
CED	+3				
BW	+3.4				
WW	+77				
YW	+139				
MILK	+25				
BW	205 WT	WR	YR	Scrotal	SC
94	699	111	112	39	MB +.85
Dam BR		Dam WR		Dam YR	
2/108		2/106		2/108	
FAT +.028					
Claw +.40					
Angle +.44					

Calving Ease Score: 1 Front Foot Score: 4  
Disposition Score: 4 Hind Foot Score: 4

- Extra performance and frame in this good Capitalist. His sire is an excellent footed, 5 yr old, excellent breeding bull still working for us.
- Many generations of attractive, easy fleshing good uddered cows in this family.

## 50 SHIPWHEEL CAPITALIST 3592

Reg:\*20918222 • Calved: 06/01/23

LD Capitalist 316 #  
Braun Creek Capitalist 938  
Braun Creek Merle 718

Connealy Capitalist 028 #  
LD Dixie Erica 2053  
Shipwheel Far & Wide 1558  
Braun Creek Merle 556  
Rito 707 of Ideal 3407 7075  
S A V Blackcap May 4136  
WMR Timeless 458 #  
WMR Pride 857

S A V Renown 3439 #  
Shipwheel Pride 812 #  
WMR Pride 03

EPDs					
CED	+0				
BW	+2.9				
WW	+82				
YW	+137				
MILK	+13				
BW	205 WT	WR	YR	Scrotal	SC
90	623	99	106	35.5	MB +.48
Dam BR		Dam WR		Dam YR	
4/109		4/105		3/105	
FAT +.050					
Claw +.39					
Angle +.35					

Calving Ease Score: 1 Front Foot Score: 4  
Disposition Score: 4 Hind Foot Score: 4

- Good muscle and shape with a powerful pedigree here.
- Pathfinder dam is a powerful, thick-made, easy fleshing cow with a nice udder.
- Granddam is the mother to Shipwheel Dreamer.



# SHIPWHEEL TITANIUM 3579

Reg:\*20918217 • Calved: 05/15/23



Mc Cumber Titanium 5005  
MVCC 5005-925  
MVCC Molly 424

Mc Cumber Titanium 3127  
Miss Wix 7126 of Mc Cumber #  
Vermilion 7078 Dateline L189  
Sackmann Molly 076  
Connealy Capitalist 028 #  
LD Dixie Erica 2053  
WMR Timeless 458 #  
WMR Pride 857

EPDs	
CED	-1
BW	+3.0
WW	+65
YW	+110
MILK	+27

BW	205 WT	WR	YR	Scrotal	SC
85	675	107	103	41	MB +3.2
Dam BR		Dam WR		Dam YR	
3/96		3/104		3/104	

Calving Ease Score: 1    Front Foot Score: 4  
Disposition Score: 4    Hind Foot Score: 4

- Hard to fault this good 925 son packed with performance and maternal.
- Excellent uddered, easy fleshing, gentle, young dam just missed Pathfinder.
- Granddam is the mother to Shipwheel Dreamer.



# SHIPWHEEL TITANIUM 3590

Reg:\*20918220 • Calved: 05/10/23



Mc Cumber Titanium 5005  
MVCC 5005-925  
MVCC Molly 424

Mc Cumber Titanium 3127  
Miss Wix 7126 of Mc Cumber #  
Vermilion 7078 Dateline L189  
Sackmann Molly 076  
Myers Keystone M263  
Shipwheel Chloe 5125  
S A V Pioneer 7301 #  
Shipwheel Pinetop 863

EPDs	
CED	+2
BW	+2.7
WW	+63
YW	+110
MILK	+30

BW	205 WT	WR	YR	Scrotal	SC
89	592	94	99	35.5	MB +4.2
Dam BR		Dam WR		Dam YR	
2/109		2/93		1/99	

Calving Ease Score: 1    Front Foot Score: 4  
Disposition Score: 4    Hind Foot Score: 4.5

- A phenotypic standout here with nice shape, muscle expression and clean front end.
- Young dam is long bodied and easy fleshing with an excellent udder.



# SHIPWHEEL CONCHO 3596

Reg:\*20918225 • Calved: 05/18/23



Vermilion Spur E870  
JVC Concho 28  
JVC Henrietta Pride 333

Connealy Spur #  
Vermilion Lass 4942  
C C A Uno 049 #  
JVC Henrietta Pride Y137  
Rito 707 of Ideal 3407 7075  
S A V Blackcap May 4136  
WMR Timeless 458 #  
WMR Pride 857

EPDs	
CED	-5
BW	+6.0
WW	+78
YW	+142
MILK	+25

S A V Renown 3439 #  
Shipwheel Pride 824  
WMR Pride 03

BW	205 WT	WR	YR	Scrotal	SC
107	629	100	105	33.5	MB +2.5
Dam BR		Dam WR		Dam YR	
4/104		4/106		3/100	

Calving Ease Score: 1    Front Foot Score: 4  
Disposition Score: 4    Hind Foot Score: 4

- This is your guy if you are after high performing feeder cattle. Would recommend using him as a terminal bull.
- Dam is a bigger, high-performance cow with impressive production.
- Granddam is the mother to Shipwheel Dreamer.

*In memory of a  
dear friend*



In January 2024 we suffered a huge loss at Shipwheel Cattle. A longtime friend that became family, mentor, and business partner. Dr. Gale Jellum, DVM passed away after struggling with health problems for the past few years. Gale drove into our yard one day in 2006 and said he wanted to offer us his registered cow herd on a share basis. He said

he appreciated Klint's eye for cattle and knew they would be in good hands here. We very graciously took him up on his offer which helped lay a big part of the foundation of the Shipwheel cow herd. Over the next 10+ years, Gale was a vital part of our operation, especially with herd health. His mentorship has left us with lessons beyond measure. "Grandpa Geezo" to Austin and Bree, was such a loving grandpa to them both. Austin was the apple of his eye when it came to ANYTHING John Deere. He loved to bring the kids candy and take them fishing. His insight and support are greatly missed.



# SELLING CHOICE

• A very consistent flush of 6 full ET brothers from one of the most powerful cows on the ranch. She's as deep and easy fleshing as they come.

**54 SHIPWHEEL BLS RIGHTTIME 3679**  
 Reg: +\*20927063 • Calved: 04/30/23

Sitz Right Time 8034  
**S Right Time 7861**  
 S Queen Essa 367

S A V Resource 1441 #  
**Shipwheel BLS Rachel 725**  
 Apexette Rachel 2011

Leachman Right Time 338-5605 #  
 Sitz Florabelle Fanny 1293 #  
 S Chisum 6175 #  
 S Queen Essa 208 #  
 Rito 707 of Ideal 3407 7075  
 S A V Blackcap May 4136  
 Connealy Thunder #  
 Apexette Rachel 0048

**EPDs**

CED	+3
BW	+5.0
WW	+75
YW	+123
MILK	+11
SC	+1.82
MB	+6.6
RE	+2.2
FAT	+0.069
Claw	+4.9
Angle	+4.7

BW	205 WT	WR	YR	Scrotal
99	547	96	103	40
Dam BR	Dam WR	Dam YR		
4/97	4/103	4/104		

Calving Ease Score: 1      Front Foot Score: 4  
 Disposition Score: 4      Hind Foot Score: 4



Shipwheel BLS Rachel 725 - Dam of Lots 54-59

**55 SHIPWHEEL BLS RIGHTTIME 3678**  
 Reg: +\*20927062 • Calved: 05/07/23

Sitz Right Time 8034  
**S Right Time 7861**  
 S Queen Essa 367

S A V Resource 1441 #  
**Shipwheel BLS Rachel 725**  
 Apexette Rachel 2011

Leachman Right Time 338-5605 #  
 Sitz Florabelle Fanny 1293 #  
 S Chisum 6175 #  
 S Queen Essa 208 #  
 Rito 707 of Ideal 3407 7075  
 S A V Blackcap May 4136  
 Connealy Thunder #  
 Apexette Rachel 0048

**EPDs**

CED	+14
BW	-1.1
WW	+56
YW	+96
MILK	+17
SC	+1.25
MB	+7.1
RE	+3.7
FAT	+0.055
Claw	+5.0
Angle	+4.6

BW	205 WT	WR	YR	Scrotal
76	564	99	103	38.5
Dam BR	Dam WR	Dam YR		
4/97	4/103	4/104		

Calving Ease Score: 3      Front Foot Score: 4.5  
 Disposition Score: 4      Hind Foot Score: 4.5

**56 SHIPWHEEL BLS RIGHTTIME 3677**  
 Reg: +\*20927061 • Calved: 05/04/23

Sitz Right Time 8034  
**S Right Time 7861**  
 S Queen Essa 367

S A V Resource 1441 #  
**Shipwheel BLS Rachel 725**  
 Apexette Rachel 2011

Leachman Right Time 338-5605 #  
 Sitz Florabelle Fanny 1293 #  
 S Chisum 6175 #  
 S Queen Essa 208 #  
 Rito 707 of Ideal 3407 7075  
 S A V Blackcap May 4136  
 Connealy Thunder #  
 Apexette Rachel 0048

**EPDs**

CED	+9
BW	+3
WW	+67
YW	+112
MILK	+22
SC	+1.67
MB	+4.0
RE	+5.8
FAT	+0.074
Claw	+2.7
Angle	+3.8

BW	205 WT	WR	YR	Scrotal
71	602	106	103	40
Dam BR	Dam WR	Dam YR		
4/97	4/103	4/104		

Calving Ease Score: 3      Front Foot Score: 4  
 Disposition Score: 4      Hind Foot Score: 4



# LOT'S 54, 55, 56, 57, 58, 59

- Donor granddam has made her mark here and is truly one of our elites. One of her sons was a past op seller to Hilltop Angus, MT for \$25,000. 2 Coalition sons were top sellers last year to Stepler Ranch and Dillon Lipp, MT.
- Bree's bulls.

**57 SHIPWHEEL BLS RIGHTTIME 3681**  
 Reg: +\*20927065 • Calved: 04/25/23

Sitz Right Time 8034  
**S Right Time 7861**  
 S Queen Essa 367

S A V Resource 1441 #  
**Shipwheel BLS Rachel 725**  
 Apexette Rachel 2011

Leachman Right Time 338-5605 #  
 Sitz Florabelle Fanny 1293 #  
 S Chisum 6175 #  
 S Queen Essa 208 #  
 Rito 707 of Ideal 3407 7075  
 S A V Blackcap May 4136  
 Connealy Thunder #  
 Apexette Rachel 0048

EPDs					
CED	+12				
BW	-1				
WW	+69				
YW	+118				
MILK	+18				
SC	+1.63				
MB	+4.9				
RE	+2.8				
FAT	+0.50				
Claw	+3.8				
Angle	+4.5				

BW	205 WT	WR	YR	Scrotal	SC
52	556	100	100	38	MB +4.9
Dam BR	Dam WR	Dam YR	RE		
4/97	4/103	4/104	FAT +0.50		

Calving Ease Score: 3    Front Foot Score: 4  
 Disposition Score: 4    Hind Foot Score: 4



Apexette Rachel 2011 - Granddam of Lots 54-59

**58 SHIPWHEEL BLS RIGHTTIME 3682**  
 Reg: +\*20927066 • Calved: 04/25/23

Sitz Right Time 8034  
**S Right Time 7861**  
 S Queen Essa 367

S A V Resource 1441 #  
**Shipwheel BLS Rachel 725**  
 Apexette Rachel 2011

Leachman Right Time 338-5605 #  
 Sitz Florabelle Fanny 1293 #  
 S Chisum 6175 #  
 S Queen Essa 208 #  
 Rito 707 of Ideal 3407 7075  
 S A V Blackcap May 4136  
 Connealy Thunder #  
 Apexette Rachel 0048

EPDs					
CED	+6				
BW	+1				
WW	+64				
YW	+109				
MILK	+23				
SC	+1.60				
MB	+8.4				
RE	+3.0				
FAT	+0.16				
Claw	+3.2				
Angle	+4.2				

BW	205 WT	WR	YR	Scrotal	SC
70	523	92	96	37	MB +8.4
Dam BR	Dam WR	Dam YR	RE		
4/97	4/103	4/104	FAT +0.16		

Calving Ease Score: 3    Front Foot Score: 4  
 Disposition Score: 4    Hind Foot Score: 4

**59 SHIPWHEEL BLS RIGHTTIME 3683**  
 Reg: +\*20928458 • Calved: 04/26/23

Sitz Right Time 8034  
**S Right Time 7861**  
 S Queen Essa 367

S A V Resource 1441 #  
**Shipwheel BLS Rachel 725**  
 Apexette Rachel 2011

Leachman Right Time 338-5605 #  
 Sitz Florabelle Fanny 1293 #  
 S Chisum 6175 #  
 S Queen Essa 208 #  
 Rito 707 of Ideal 3407 7075  
 S A V Blackcap May 4136  
 Connealy Thunder #  
 Apexette Rachel 0048

EPDs					
CED	+8				
BW	+1.1				
WW	+74				
YW	+125				
MILK	+17				
SC	+1.38				
MB	+7.0				
RE	+7.3				
FAT	+0.22				
Claw	+3.8				
Angle	+3.9				

BW	205 WT	WR	YR	Scrotal	SC
65	609	100	100	38	MB +7.0
Dam BR	Dam WR	Dam YR	RE		
4/97	4/103	4/104	FAT +0.22		

Calving Ease Score: 3    Front Foot Score: 4  
 Disposition Score: 4    Hind Foot Score: 4



59

## 60 SHIPWHEEL RAINMAKER 3605

Reg:\*20940641 • Calved: 04/26/23



Basin Rainmaker 4404 #  
Shipwheel Rainmaker 0538  
Shipwheel Pinetop 887

Basin Rainmaker 2704  
Basin Joy 1036  
BPF DR J 2110  
Shipwheel Pinetop 515  
Basin Payweight 1682 #  
K A Ms Net Present Value 008  
Connealy Thunder #  
Shipwheel Enchantress 8184

K A Eisenhower  
Shipwheel Enchantress 8106  
Shipwheel Enchantress 6130

EPDs	
CED	+1
BW	+3.7
WW	+80
YW	+140
MILK	+27
SC	+1.18
MB	+0.80
RE	+0.82
FAT	+0.25
Claw	+0.40
Angle	+0.42

BW	205 WT	WR	YR	Scrotal	SC
96	695	110	111	36	MB +0.80
Dam BR		Dam WR		Dam YR	RE +0.82
4/102		4/109		4/110	FAT +0.25

Calving Ease Score: 1 Front Foot Score: 4.5  
Disposition Score: 4 Hind Foot Score: 4.5

- More frame in this Rainmaker, backed by powerful cows.
- Dam is a thick-made, excellent footed and uddered cow.
- Granddam is as pretty as they come.
- Donor 3rd dam is the great 8184.

## 63 SHIPWHEEL ESSENTIAL 9536

Reg:\*20918273 • Calved: 04/12/23



Shipwheel Resource 5621  
Shipwheel Essential 9536  
Shipwheel Pinetop 720 #

S A V Resource 1441 #  
Apex Eriskay 5506 #  
LT Regions 4110  
Shipwheel Pinetop 572  
Connealy Capitalist 028 #  
LD Dixie Erica 2053  
WMR Timeless 458 #  
WMR Pride 857

LD Capitalist 316 #  
Shipwheel Pride 901  
WMR Pride 03

EPDs	
CED	+5
BW	+2.3
WW	+77
YW	+139
MILK	+27
SC	+1.88
MB	+0.34
RE	+0.36
FAT	+0.27
Claw	+0.40
Angle	+0.37

BW	205 WT	WR	YR	Scrotal	SC
79	680	113	109	39	MB +0.34
Dam BR		Dam WR		Dam YR	RE +0.36
3/89		3/100		3/101	FAT +0.27

Calving Ease Score: 1 Front Foot Score: 3.75  
Disposition Score: 4 Hind Foot Score: 4

- A bigger framed Essential, backed by powerful donor cows.
- Young dam is super uddered and gentle.
- Granddam is the mother to Dreamer.

## 61 SHIPWHEEL RAINMAKER 3594

Reg:\*20940645 • Calved: 04/28/23



Basin Rainmaker 4404 #  
Shipwheel Rainmaker 0538  
Shipwheel Pinetop 887

Basin Rainmaker 2704  
Basin Joy 1036  
BPF DR J 2110  
Shipwheel Pinetop 515  
R R Rito 707 #  
Coleman Donna 714  
Hyline Right Time 338 #  
Apexette Eriskay 9040 #

Coleman Knight 209  
Shipwheel Eriskay 819  
Apexette Eriskay 3060

EPDs	
CED	-6
BW	+6.4
WW	+71
YW	+118
MILK	+17
SC	+1.79
MB	+2.0
RE	+0.68
FAT	+0.34
Claw	+0.24
Angle	+0.33

BW	205 WT	WR	YR	Scrotal	SC
105	635	100	101	37	MB +2.0
Dam BR		Dam WR		Dam YR	RE +0.68
4/114		4/99		4/99	FAT +0.34

Calving Ease Score: 1 Front Foot Score: 4  
Disposition Score: 4 Hind Foot Score: 4

- Powerful pedigree behind this Rainmaker, chucked full of performance, maternal and longevity.
- Consistent producing young dam has "A" ratings in every category.
- Donor 2nd, 3rd, 5th dams and all produced well up into their teens.

## 64 SHIPWHEEL CONFEDERATE 1507

Reg:\*20939501 • Calved: 03/31/23



U-2 Coalition 206C #  
Shipwheel Confederate 1507  
Shipwheel Pinetop 932

HF Syndicate 213Z  
U2 Erelite 109Z  
LD Capitalist 316 #  
Shipwheel Pinetop 651 #  
Shipwheel Resource 5621  
Shipwheel Pinetop 720 #  
CCAR Uncommon Z317  
Shipwheel Chloe 958

Shipwheel Essential 9536  
Shipwheel Chloe 1117  
Shipwheel Chloe 5125

EPDs	
CED	+5
BW	+2.7
WW	+62
YW	+112
MILK	+33
SC	+0.71
MB	+0.36
RE	+0.68
FAT	+0.16
Claw	+0.39
Angle	+0.46

BW	205 WT	WR	YR	Scrotal	SC
69	606	102	108	37.5	MB +0.36
Dam BR		Dam WR		Dam YR	RE +0.68
1/112		1/102		1/108	FAT +0.16

Calving Ease Score: 1 Front Foot Score: 4  
Disposition Score: 4 Hind Foot Score: 4

- A nice structured Confederate, that will sire exceptional females.
- First calf heifer dam has "A" ratings in every category.
- Donor granddam is the mother to Shipwheel Keystone 7543 working at Apex Angus, MT.

## 62 SHIPWHEEL GRAND CANYON 3651

Reg:\*20918259 • Calved: 04/30/23



S A V Rainfall 6846  
S A V Grand Canyon 0969  
S A V Madame Pride 9477

Coleman Charlo 0256 #  
S A V Blackcap May 4136  
S A V Net Worth 4200 #  
S A V Madame Pride 0075  
Connealy Thunder #  
CTS 7V03 Bellemere Maid 9T02  
Connealy Final Product #  
Shipwheel Elba 0126

CTS Remedy 1T01 #  
Shipwheel Elba 665  
Shipwheel Elba 283

EPDs	
CED	+7
BW	+2
WW	+56
YW	+111
MILK	+43
SC	+1.15
MB	+0.42
RE	+0.31
FAT	+0.050
Claw	+0.44
Angle	+0.56

BW	205 WT	WR	YR	Scrotal	SC
83	628	99	101	34.5	MB +0.42
Dam BR		Dam WR		Dam YR	RE +0.31
5/107		5/102		4/103	FAT +0.050

Calving Ease Score: 2 Front Foot Score: 4.5  
Disposition Score: 4 Hind Foot Score: 4

- A good, athletic long strided heifer bull. He will sire exceptional daughters.
- Dam is a gorgeous, long bodied, wedge-shaped cow.

## 65 SHIPWHEEL ESSENTIAL 9536

Reg:\*20918263 • Calved: 04/20/23



Shipwheel Resource 5621  
Shipwheel Essential 9536  
Shipwheel Pinetop 720 #

S A V Resource 1441 #  
Apex Eriskay 5506 #  
LT Regions 4110  
Shipwheel Pinetop 572  
HF Syndicate 213Z  
U2 Erelite 109Z  
Coleman Knight 209  
WMR Pride 03

U-2 Coalition 206C #  
Shipwheel Pride 024  
Shipwheel Pride 807

EPDs	
CED	+6
BW	+1.8
WW	+74
YW	+138
MILK	+34
SC	+0.92
MB	+0.20
RE	+0.74
FAT	+0.033
Claw	+0.44
Angle	+0.46

BW	205 WT	WR	YR	Scrotal	SC
78	642	106	106	36	MB +0.20
Dam BR		Dam WR		Dam YR	RE +0.74
2/96		2/105		2/103	FAT +0.033

Calving Ease Score: 2 Front Foot Score: 4  
Disposition Score: 4.5 Hind Foot Score: 4

- A complete, balanced, gentle bull with plenty of performance and maternal power.
- Pretty, young dam is on her way to Pathfinder.
- Donor 3rd dam is the mother to Shipwheel Dreamer.



## SHIPWHEEL CONFEDERATE 3500

Reg: \*20939519 • Calved: 04/19/23



U-2 Coalition 206C #  
Shipwheel Confederate 1507  
Shipwheel Pinetop 932

HF Syndicate 213Z  
U2 Erelite 109Z  
LD Capitalist 316 #  
Shipwheel Pinetop 651 #  
S A V Resource 1441 #  
Glacial 20N BlackbirdEve 29R  
Shipwheel Upward 2517  
Shipwheel Chloe 5124

EPDs	
CED	+2
BW	+3.2
WW	+62
YW	+120
MILK	+21
SC	+1.78
MB	+7.9
RE	+5.9
FAT	+0.10
Claw	+4.46
Angle	+4.40

BW	205 WT	WR	YR	Scrotal
90	551	91	98	37
Dam BR	Dam WR	Dam YR		
2/100	2/99	2/104		

Calving Ease Score: 1    Front Foot Score: 4.5  
Disposition Score: 4.5    Hind Foot Score: 4.5

- A good-looking, gentle, excellent footed bull that catches your eye.
- Dam is a moderate framed, thick-made, young cow that is definitely earning her keep. She raised a top seller to John Peebles in 2023 and a later semen interest was sold to Kraye Angus, NE.
- Grand dam is the mother to lot 33.



## SHIPWHEEL ALS DREAMER 3665

Reg: \*20927046 • Calved: 04/27/23



S A V Renown 3439 #  
Shipwheel Dreamer 8522  
WMR Pride 03

Rito 707 of Ideal 3407 7075  
S A V Blackcap May 4136  
WMR Timeless 458 #  
WMR Pride 857  
S Alliance 3313  
S Gloria 464 #  
S A V Pioneer 7301 #  
Shipwheel Eriskay 821

EPDs	
CED	+9
BW	+1.5
WW	+57
YW	+97
MILK	+25
SC	+0.79
MB	+4.8
RE	+5.6
FAT	+0.29
Claw	+4.41
Angle	+4.42

BW	205 WT	WR	YR	Scrotal
89	610	108	98	36
Dam BR	Dam WR	Dam YR		
8/102	8/103	8/100		

Calving Ease Score: 2    Front Foot Score: 4.5  
Disposition Score: 4    Hind Foot Score: 4.5

- A moderate framed, soft-made, excellent footed bull. He will sire exceptional females that will thrive in our northern climate. He's backed by 2 of the most influential cows to ever reside here. Pride 03 and Eriskay 330.
- Austin's Bull.



Shipwheel Rainmaker 2554 -  
Maternal brother to Dam of Lot 66



Shipwheel Eriskay 330 - Dam of Lot 67

## LOTS 68 & 69 FULL ET BROTHERS

- A pair of deep middled, soft-made, cow makers here.
- Full ET brothers to Lot's 21 & 22.



## SHIPWHEEL DREAMER 3685

Reg: \*20927055 • Calved: 04/24/23



S A V Renown 3439 #  
Shipwheel Dreamer 8522  
WMR Pride 03

Rito 707 of Ideal 3407 7075  
S A V Blackcap May 4136  
WMR Timeless 458 #  
WMR Pride 857  
Koupal Advance 28 #  
LT Beauty 8398  
Sitz Far & Wide 6908  
Shipwheel Pinetop 059

EPDs	
CED	-1
BW	+1.5
WW	+54
YW	+97
MILK	+39
SC	+1.77
MB	+2.2
RE	+5.7
FAT	-0.07
Claw	+4.47
Angle	+4.43

BW	205 WT	WR	YR	Scrotal
84	663	100		39
Dam BR	Dam WR	Dam YR		
5/104	5/103	4/103		

Calving Ease Score: 1    Front Foot Score: 3  
Disposition Score: 4.5    Hind Foot Score: 4



## SHIPWHEEL DREAMER 3688

Reg: \*20927058 • Calved: 04/25/23



S A V Renown 3439 #  
Shipwheel Dreamer 8522  
WMR Pride 03

Rito 707 of Ideal 3407 7075  
S A V Blackcap May 4136  
WMR Timeless 458 #  
WMR Pride 857  
Koupal Advance 28 #  
LT Beauty 8398  
Sitz Far & Wide 6908  
Shipwheel Pinetop 059

EPDs	
CED	+8
BW	-1.5
WW	+44
YW	+86
MILK	+41
SC	+1.11
MB	+4.1
RE	+2.1
FAT	+0.60
Claw	+5.1
Angle	+4.1

BW	205 WT	WR	YR	Scrotal
65	584	100	100	37
Dam BR	Dam WR	Dam YR		
5/104	5/103	4/103		

Calving Ease Score: 3    Front Foot Score: 4  
Disposition Score: 4    Hind Foot Score: 4

# LOTS 70 & 71 FULL ET BROTHERS

- A dandy pair of full ET heifer bulls.
- Full ET brothers to Lot's 5, 6 & 7.

## 70 SHIPWHEEL RIGHT TIME 3672

Reg: +\*20927051 • Calved: 04/30/23



Sitz Right Time 8034  
S Right Time 7861  
S Queen Essa 367

Leachman Right Time 338-5605 #  
Sitz Florabelle Fanny 1293 #  
S Chisum 6175 #  
S Queen Essa 208 #  
Rito 707 of Ideal 3407 7075  
S A V Blackcap May 4136  
Sitz Far & Wide 6908  
Dr J Miss Apex Focus 053-L60

EPDs	
CED	+8
BW	+9
WW	+61
YW	+102
MILK	+27

BW	205 WT	WR	YR	Scrotal	SC
61	548	100	100	39.5	+1.94
Dam BR		Dam WR		Dam YR	RE
5/105		5/108		5/105	+1.73
					FAT
					+0.23

Calving Ease Score: 3 Front Foot Score: 4  
Disposition Score: 4 Hind Foot Score: 4

Claw	+4.2
Angle	+3.8

## 71 SHIPWHEEL RIGHT TIME 3670

Reg: +\*20927049 • Calved: 04/29/23



Sitz Right Time 8034  
S Right Time 7861  
S Queen Essa 367

Leachman Right Time 338-5605 #  
Sitz Florabelle Fanny 1293 #  
S Chisum 6175 #  
S Queen Essa 208 #  
Rito 707 of Ideal 3407 7075  
S A V Blackcap May 4136  
Sitz Far & Wide 6908  
Dr J Miss Apex Focus 053-L60

EPDs	
CED	+13
BW	+0.0
WW	+61
YW	+99
MILK	+29

BW	205 WT	WR	YR	Scrotal	SC
61	546	100	100	36	+1.48
Dam BR		Dam WR		Dam YR	RE
5/105		5/108		5/105	+0.96
					FAT
					+0.47

Calving Ease Score: 3 Front Foot Score: 4  
Disposition Score: 4 Hind Foot Score: 4

Claw	+5.0
Angle	+4.4

## 72 SHIPWHEEL GRAND CANYON 3668

Reg: +\*20927048 • Calved: 04/22/23



S A V Rainfall 6846  
S A V Grand Canyon 0969  
S A V Madame Pride 9477

Coleman Charlo 0256 #  
S A V Blackcap May 4136  
S A V Net Worth 4200 #  
S A V Madame Pride 0075  
S Chisum 6175 #  
Dr J Ms Wide Track 374 M15  
Sitz Rainmaker 6536  
Apexette Chloe 3063

EPDs	
CED	+4
BW	+2.3
WW	+63
YW	+116
MILK	+27

BW	205 WT	WR	YR	Scrotal	SC
87	524	92	93	36	+1.04
Dam BR		Dam WR		Dam YR	RE
5/98		5/107		5/102	+0.34
					FAT
					+0.99

Calving Ease Score: 1 Front Foot Score: 4  
Disposition Score: 4 Hind Foot Score: 4.5

- Good shape to this long spined Grand Canyon.
- Full ET brother to Lot's 23 & 24.

Claw	+3.7
Angle	+4.6



## 73 SHIPWHEEL GRAND CANYON 3666

Reg: +\*20927047 • Calved: 04/25/23



S A V Rainfall 6846  
S A V Grand Canyon 0969  
S A V Madame Pride 9477

Coleman Charlo 0256 #  
S A V Blackcap May 4136  
S A V Net Worth 4200 #  
S A V Madame Pride 0075  
Sitz Upward 307R #  
Shipwheel Enchantress 8184  
Apex High Time 665  
D R J Miss Rolls Royce F17 #

EPDs	
CED	+2
BW	+1.9
WW	+63
YW	+105
MILK	+21

BW	205 WT	WR	YR	Scrotal	SC
76	553	98	98	38	+1.62
Dam BR		Dam WR		Dam YR	RE
7/111		7/111		7/108	+0.18
					FAT
					+0.51

Calving Ease Score: 1 Front Foot Score: 4  
Disposition Score: 4 Hind Foot Score: 4

- Boat loads of maternal power behind this embryo bull.
- A maternal brother was a top seller to John Peebles in 2023.
- Pathfinder donor dam brings in a whopper every year.
- Granddam produced till 14 yrs old.
- Pathfinder donor 3rd dam 12 @ 106 WR.
- 4th dam 11 @ 102 WR.

Claw	+3.2
Angle	+4.2

## 74 SHIPWHEEL ALS DREAMER 3521

Reg: +\*20920947 • Calved: 04/19/23



S A V Renown 3439 #  
Shipwheel Dreamer 8522  
WMR Pride 03

Rito 707 of Ideal 3407 7075  
S A V Blackcap May 4136  
WMR Timeless 458 #  
WMR Pride 857  
HF Syndicate 213Z  
U2 Erelite 109Z  
Apex Uncommon 674  
Shipwheel Eriskay 330 #

EPDs	
CED	+2
BW	+2.5
WW	+72
YW	+120
MILK	+29

BW	205 WT	WR	YR	Scrotal	SC
82	616	102	101	35	+0.86
Dam BR		Dam WR		Dam YR	RE
2/95		2/104		2/101	+0.63
					FAT
					-0.15

Calving Ease Score: 1 Front Foot Score: 4  
Disposition Score: 4.5 Hind Foot Score: 4

- A nice profile to this moderate framed, gentle Dreamer.
- Young dam has "A" ratings in every category and is on her way to making pathfinder and donor.
- Pathfinder granddam.
- Pathfinder donor 3rd dam and mother to Lot 67.
- 9th dam was Klint's first cow from 1984.
- Austin's bull.

Claw	+4.3
Angle	+4.8



# 75 SHIPWHEEL DREAMER 3510

Reg:\*20918267 • Calved: 04/17/23



S A V Renown 3439 #  
**Shipwheel Dreamer 8522**  
 WMR Pride 03

Rito 707 of Ideal 3407 7075  
 S A V Blackcap May 4136  
 WMR Timeless 458 #  
 WMR Pride 857

S Chisum 255 #  
**Shipwheel Eriskay 088**  
 Shipwheel Eriskay 321

S Chisum 6175 #  
 S Blossom 0278 #  
 Connealy Packer 547 #  
 Apexette Eriskay 3060

EPDs	
CED	-1
BW	+2.9
WW	+61
YW	+91
MILK	+24
SC	+4.1
MB	+0.3
RE	+0.65
FAT	+0.11
Claw	+0.51
Angle	+0.42

BW	205 WT	WR	YR	Scrotal	SC
84	635	105	96	34.5	
Dam BR	Dam WR	Dam YR			
2/89	2/101	2/98			

Calving Ease Score: 1    Front Foot Score: 4  
 Disposition Score: 4    Hind Foot Score: 4

- Cow maker here with loads of longevity bred in.
- Young dam is moderate and nice uddered. Many generations of impeccable udders in the Eriskay family.



# 76 SHIPWHEEL RIGHT TIME 3553

Reg:\*20918276 • Calved: 04/20/23



Sitz Right Time 8034  
**S Right Time 7861**  
 S Queen Essa 367

Leachman Right Time 338-5605 #  
 Sitz Florabelle Fanny 1293 #  
 S Chisum 6175 #  
 S Queen Essa 208 #

Mc Cumber Armour 7148  
**Shipwheel Pinetop 934**  
 Shipwheel Pinetop 796

Mc Cumber Titanium 5005  
 Miss Wix 2003 of Mc Cumber #  
 Shipwheel Upward 2517  
 Shipwheel Pinetop 002

EPDs	
CED	+19
BW	-3.8
WW	+58
YW	+96
MILK	+36
SC	+3.8
MB	+4.7
RE	+0.09
FAT	+0.082
Claw	+4.1
Angle	+4.48

BW	205 WT	WR	YR	Scrotal	SC
60	657	109	99	38	
Dam BR	Dam WR	Dam YR			
3/87	3/109	3/104			

Calving Ease Score: 3    Front Foot Score: 4  
 Disposition Score: 4    Hind Foot Score: 4

- Extreme calving ease in this good, maternally bred Right Time. Keep every daughter out of him.
- Gorgeous young dam is feminine, excellent uddered and heavy milking.

# 77 SHIPWHEEL RIGHT TIME 3618

Reg:\*20918241 • Calved: 04/26/23



Sitz Right Time 8034  
**S Right Time 7861**  
 S Queen Essa 367

Leachman Right Time 338-5605 #  
 Sitz Florabelle Fanny 1293 #  
 S Chisum 6175 #  
 S Queen Essa 208 #

S A V Resource 1441 #  
**Shipwheel Pinetop 603**  
 Dr J Ms Wide Track 374 M15

Rito 707 of Ideal 3407 7075  
 S A V Blackcap May 4136  
 Apex Wide Track 374  
 DR J Miss Guru I6

EPDs	
CED	+0
BW	+3.4
WW	+60
YW	+92
MILK	+22
SC	+1.03
MB	+4.7
RE	+0.35
FAT	+0.15
Claw	+0.31
Angle	+0.41

BW	205 WT	WR	YR	Scrotal	SC
96	625	99	98	36.5	
Dam BR	Dam WR	Dam YR			
4/107	4/99	3/96			

Calving Ease Score: 1    Front Foot Score: 4  
 Disposition Score: 4    Hind Foot Score: 4

- Powerful cow family behind this good Right Time.
- Dam is deep ribbed, long bodied and athletic with a good udder.
- Donor granddam is the mother to Shipwheel Montana.
- Donor 3rd dam.
- 4th dam 12@107 WR.
- 5th dam 11@102 WR.

*A tribute to the guy who helped us get our start*

Bill Pelton called us up and said "I have a business plan I would like to bounce off you. I'll come to Chinook if we can meet for dinner, I'll fill you in." We meet, and he says "I think you need to have your own bull sale, and I think this is what you need to do!" Bill says, "I met this young, up and coming auctioneer named Kyle Shobe out of Lewistown. You need to visit with him about selling your sale. It would be good for you both to start together, he's the real deal! I will help you and I think we should have a bull sale with TV screens and videos instead of a sale ring! The rest is 16 years of history!!

Here's a tribute to the guy who led the herd in the right direction to form Montana BQA. He calls and say's "Lori we need a real, ranch-working woman on the board, and you are the one for the job!" There was no saying no to the man! With kids in tow, I attended all the meetings and sessions. Helped host and spread the good word. At the end of every meeting/session, he would always comment to the entire board what "great kids we were raising to sit so quietly and respectfully."

Here's a tribute to the guy that said "Klint I want you to donate a heifer to the NILE Merit Heifer program. This will do you worlds of good! But keep in mind Klint, it's got to be your very best heifer! The boy that is selected for your heifer comes from the best show family in Montana and they will do right by you if you provide the product! Garrett Bromenshenk and Vanna swept the state by storm! God, this made us proud.



The Shipwheel sales will never be the same without him, we are extremely grateful for the dear friend and mentor Bill became.

# LOTS 78, 79, 80 & 81 - 3/4 BROTHERS



## SHIPWHEEL DREAMER 3562

Reg:\*20918282 • Calved: 04/22/23

S A V Renown 3439 #  
Shipwheel Dreamer 8522  
WMR Pride 03

Bruin Torque 5261 #  
Shipwheel Eriskay 9100  
Shipwheel Eriskay 321

Rito 707 of Ideal 3407 7075  
S A V Blackcap May 4136  
WMR Timeless 458 #  
WMR Pride 857  
S A V 004 Density 4336 #  
Falcon Blackbird 6071  
Connealy Packer 547 #  
Apexette Eriskay 3060



EPDs	
CED	+4
BW	+1.9
WW	+54
YW	+95
MILK	+25
SC	+7.7
MB	+7.1
RE	+8.1
FAT	+0.11
Claw	+3.39
Angle	+3.36

BW	205 WT	WR	YR	Scrotal
92	609	101	93	37
Dam BR		Dam WR		Dam YR
3/114		3/98		2/94

Calving Ease Score: 1      Front Foot Score: 4  
Disposition Score: 4      Hind Foot Score: 4

- Another moderate framed, maternally bred Dreamer.
- Dam is moderate framed and excellent uddered with longevity bred in.



## SHIPWHEEL DREAMER 3561

Reg:\*20918281 • Calved: 04/16/23



S A V Renown 3439 #  
Shipwheel Dreamer 8522  
WMR Pride 03

Bruin Torque 5261 #  
Shipwheel Black Pride 999  
Shipwheel Black Pride 318

Rito 707 of Ideal 3407 7075  
S A V Blackcap May 4136  
WMR Timeless 458 #  
WMR Pride 857  
S A V 004 Density 4336 #  
Falcon Blackbird 6071  
Shipwheel Chinook 1549  
Shipwheel Black Pride 1127

EPDs	
CED	+8
BW	+1.1
WW	+57
YW	+96
MILK	+27

BW	205 WT	WR	YR	Scrotal	SC
89	589	98	99	37.5	+4.1
Dam BR		Dam WR		Dam YR	MB
3/103		3/96		2/96	+4.6
					RE
					+3.8
					FAT
					+0.57
					Claw
					+3.32
					Angle
					+3.35

Calving Ease Score: 2      Front Foot Score: 4.5  
Disposition Score: 4.5      Hind Foot Score: 4.5

- Moderate, deep, gentle and soft-made. The first of four ¾ brothers to sell.
- Dam is a gorgeous, moderate framed, easy fleshing young cow with a picture perfect Torque udder.



## SHIPWHEEL DREAMER 3559

Reg:\*20918280 • Calved: 04/15/23



S A V Renown 3439 #  
Shipwheel Dreamer 8522  
WMR Pride 03

Bruin Torque 5261 #  
Shipwheel Verona 985  
Shipwheel Verona 444 #

Rito 707 of Ideal 3407 7075  
S A V Blackcap May 4136  
WMR Timeless 458 #  
WMR Pride 857  
S A V 004 Density 4336 #  
Falcon Blackbird 6071  
S Chisum 255 #  
Shipwheel Verona 221 #

EPDs	
CED	+10
BW	-5
WW	+54
YW	+93
MILK	+32

BW	205 WT	WR	YR	Scrotal	SC
75	571	95	92	35	+3.2
Dam BR		Dam WR		Dam YR	MB
3/93		3/102		3/99	+2.1
					RE
					+6.9
					FAT
					+0.36
					Claw
					+4.0
					Angle
					+4.1

Calving Ease Score: 3      Front Foot Score: 4  
Disposition Score: 4      Hind Foot Score: 4

- A maternally bred calving ease Dreamer. A full brother was a top seller to Kindle Van Dyken in 2023.
- Young dam has "A" ratings for udder, teats, disposition and mothering ability.
- Pathfinder granddam and 3rd dam.



## SHIPWHEEL DREAMER 3558

Reg:\*20918279 • Calved: 04/19/23



S A V Renown 3439 #  
Shipwheel Dreamer 8522  
WMR Pride 03

Bruin Torque 5261 #  
Shipwheel Georgina 983  
Shipwheel Georgina 422

Rito 707 of Ideal 3407 7075  
S A V Blackcap May 4136  
WMR Timeless 458 #  
WMR Pride 857  
S A V 004 Density 4336 #  
Falcon Blackbird 6071  
S Chisum 255 #  
Shipwheel Georgina 1118

EPDs	
CED	+6
BW	+1.6
WW	+56
YW	+99
MILK	+20

BW	205 WT	WR	YR	Scrotal	SC
92	536	89	95	38.5	+1.32
Dam BR		Dam WR		Dam YR	MB
3/108		3/99		3/93	+5.7
					RE
					+6.8
					FAT
					+0.30
					Claw
					+4.45
					Angle
					+3.36

Calving Ease Score: 1      Front Foot Score: 4  
Disposition Score: 4      Hind Foot Score: 4

- A full brother was a top seller in 2023 to Jon Carrel, MT.



Austin 2024 Branding

## 82 SHIPWHEEL BRAVO 3523

Reg:\*20938920 • Calved: 04/19/23

Coleman Bravo 6313 #  
Shipwheel Bravo 1532  
Shipwheel Eola 9121

Coleman Charlo 0256 #  
Coleman Donna 714  
Mc Cumber Armour 7148  
Shipwheel Eola 1108  
LD Capitalist 316 #  
Braun Creek Merle 718  
Shipwheel Signature 7659  
Shipwheel Black Pride 738

Braun Creek Capitalist 938  
Shipwheel Black Pride 111  
Shipwheel Black Pride 952

BW	205 WT	WR	YR	Scrotal	SC
57	645	108	111	35	MB +.45
Dam BR		Dam WR		Dam YR	RE
1/93		1/108		1/111	FAT +.073

Calving Ease Score: 2 Front Foot Score: 4  
Disposition Score: 4 Hind Foot Score: 4

- One of our top picks last spring and decided to use this good bull for natural service cleanup on our heifers.
- Dam is about as good as we can make one and will most likely be donor after she proves herself worthy.
- 3rd dam is the mother to Lot 2.



Shipwheel Black Pride 111 - Dam of Lot 82

## 83 SHIPWHEEL RAINMAKER 3629

Reg:\*20918246 • Calved: 06/09/23

Basin Rainmaker 4404 #  
Shipwheel Rainmaker 0538  
Shipwheel Pinetop 887

Basin Rainmaker 2704  
Basin Joy 1036  
BPF DR J 2110  
Shipwheel Pinetop 515  
S Chisum 6175 #  
Dr J Ms Wide Track 374 M15  
Sitz Rainmaker 6536  
Apexette Chloe 3063

Shipwheel Montana 2600  
Shipwheel Chloe 6117  
Shipwheel Chloe 964

BW	205 WT	WR	YR	Scrotal	SC
86	747	118	110	41	MB +1.24
Dam BR		Dam WR		Dam YR	RE
5/98		5/107		5/102	FAT +.115

Calving Ease Score: 1 Front Foot Score: 4  
Disposition Score: 4 Hind Foot Score: 4

- A younger bull with a nice profile. He's the natural calf by our 6117 Donor with ET sons selling as Lot's 23, 24 & 72.

## 84 SHIPWHEEL RAINMAKER 3595

Reg:\*20918224 • Calved: 06/20/23

Basin Rainmaker 4404 #  
Shipwheel Rainmaker 0538  
Shipwheel Pinetop 887

Basin Rainmaker 2704  
Basin Joy 1036  
BPF DR J 2110  
Shipwheel Pinetop 515  
Connealy Earnan 076E #  
S Forward 133  
Shipwheel Montana 2600  
Shipwheel Lass 942

S Earnan 476  
Shipwheel Lass 879 #  
Shipwheel Lass 5135

BW	205 WT	WR	YR	Scrotal	SC
85	655	104	102	37	MB +.64
Dam BR		Dam WR		Dam YR	RE
4/103		4/105		4/104	FAT +.047

Calving Ease Score: 1 Front Foot Score: 4.5  
Disposition Score: 4 Hind Foot Score: 4.5

- Another younger bull with solid performance, maternal and great feet.
- Pathfinder dam is an attractive young cow and ideal in every way.

## 85 SHIPWHEEL RAINMAKER 3606

Reg:\*20918233 • Calved: 06/05/23

Basin Rainmaker 4404 #  
Shipwheel Rainmaker 0538  
Shipwheel Pinetop 887

Basin Rainmaker 2704  
Basin Joy 1036  
BPF DR J 2110  
Shipwheel Pinetop 515  
S A V 004 Density 4336 #  
Falcon Blackbird 6071  
Garret's Nationwide 8001 #  
DR J Miss Apex 053-K61

Bruin Torque 5261 #  
Shipwheel Black Pride 8123  
Shipwheel Black Pride 1115

BW	205 WT	WR	YR	Scrotal	SC
90	647	102	101	37	MB +.50
Dam BR		Dam WR		Dam YR	RE
3/107		3/98		2/102	FAT +.017

Calving Ease Score: 1 Front Foot Score: 4.5  
Disposition Score: 4 Hind Foot Score: 4.5

- Another younger Rainmaker with balanced traits across the board.
- Dam is a deep, stout-made cow with an excellent Torque udder.
- Granddam is as powerful and easy fleshing as they come.

## 86 SHIPWHEEL CAPITALIST 3585

Reg:\*20918218 • Calved: 05/14/23

LD Capitalist 316 #  
Braun Creek Capitalist 938  
Braun Creek Merle 718

Connealy Capitalist 028 #  
LD Dixie Erica 2053  
Shipwheel Far & Wide 1558  
Braun Creek Merle 556  
Ideal 4223 of 1168 Blkbrd  
Shipwheel Lady 569  
Shipwheel Montana 2600  
Shipwheel Chloe 4121

Shipwheel Ideal 4223 7571  
Shipwheel Chloe 931  
Shipwheel Chloe 741

BW	205 WT	WR	YR	Scrotal	SC
95	645	102	96	35.5	MB +.89
Dam BR		Dam WR		Dam YR	RE
3/107		3/104		3/99	FAT +.082

Calving Ease Score: 1 Front Foot Score: 4.5  
Disposition Score: 4 Hind Foot Score: 4

- A good, moderate framed Capitalist with extra depth and good feet. A Maternal brother was a standout in 2023 and is working at Obrecht's, MT.
- Dam is a super deep and soggy-made cow.
- Donor 3rd dam.
- Donor 4th dam.

## 87 SHIPWHEEL CAPITALIST 3587

Reg:\*20918219 • Calved: 06/06/23



LD Capitalist 316 #  
Braun Creek Capitalist 938  
Braun Creek Merle 718

Connealy Capitalist 028 #  
LD Dixie Erica 2053  
Shipwheel Far & Wide 1558  
Braun Creek Merle 556  
Rito 707 of Ideal 3407 7075  
S A V Blackcap May 4136  
WMR Timeless 458 #  
WMR Pride 857

S A V Resource 1441 #  
Shipwheel Pride 0132  
WMR Pride 03

EPDs	
CED	+12
BW	+5
WW	+66
YW	+126
MILK	+31

BW	205 WT	WR	YR	Scrotal	SC
92	638	101	98	36	+9.8
Dam BR	Dam WR	Dam YR	RE	FAT	Claw
2/97	2/86	1/98	+1.07	+0.43	+4.9
					Angle
					+4.7

Calving Ease Score: 2 Front Foot Score: 4  
Disposition Score: 4 Hind Foot Score: 4

- Impressive growth and carcass traits in this good calving ease Capitalist.
- Young ET dam has "A" ratings in every category. Her WR production is low due to her first calf being injured and weaning off light.
- Donor granddam is the mother to Dreamer.



## 88 SHIPWHEEL TITANIUM 3577

Reg:\*20918215 • Calved: 05/10/23



Mc Cumber Titanium 5005  
MVCC 5005-925  
MVCC Molly 424

Mc Cumber Titanium 3127  
Miss Wix 7126 of Mc Cumber #  
Vermilion 7078 Dateline L189  
Sackmann Molly 076  
Connealy Capitalist 028 #  
LD Dixie Erica 2053  
S A V Resource 1441 #  
Shipwheel Pinetop 251

LD Capitalist 316 #  
Shipwheel Pinetop 032  
Shipwheel Pinetop 836

EPDs	
CED	-2
BW	+2.4
WW	+61
YW	+107
MILK	+32

BW	205 WT	WR	YR	Scrotal	SC
86	613	97	95	36	+1.91
Dam BR	Dam WR	Dam YR	RE	FAT	Claw
2/96	2/101	2/101	+3.38	+0.34	+4.7
					Angle
					+5.3

Calving Ease Score: 1 Front Foot Score: 4  
Disposition Score: 4 Hind Foot Score: 4

- Good ratings on this moderate framed, soft-made easy fleshing bull.
- Young dam is a typical, attractive, easy fleshing, excellent uddered 316 daughter.

## 89 SHIPWHEEL CONCHO 3614

Reg:\*20918238 • Calved: 06/09/23



Vermilion Spur E870  
JVC Concho 28  
JVC Henrietta Pride 333

Connealy Spur #  
Vermilion Lass 4942  
C C A Uno 049 #  
JVC Henrietta Pride Y137  
EF Commando 1366 #  
Riverbend Young Lucy W1470  
B H Rolls Royce 944  
DR J Miss N Bar 17

Shipwheel Pinetop 711  
D R J Miss Rolls Royce F17 #

EPDs	
CED	-2
BW	+4.5
WW	+71
YW	+116
MILK	+13

BW	205 WT	WR	YR	Scrotal	SC
79	688	109	103	36	+3.36
Dam BR	Dam WR	Dam YR	RE	FAT	Claw
5/95	5/100	3/104	+4.45	-0.23	+4.4
					Angle
					+3.1

Calving Ease Score: 1 Front Foot Score: 4  
Disposition Score: 4 Hind Foot Score: 4.5

- A moderate framed, long spined bull backed by great cows.
- Dam is a smaller, tidy uddered, small teated cow.
- Donor granddam 12@106 WR.
- 3rd dam 11@102 WR.

## 90 SHIPWHEEL RAINMAKER 3653

Reg:\*20918261 • Calved: 05/18/23



Basin Rainmaker 4404 #  
Shipwheel Rainmaker 0538  
Shipwheel Pinetop 887

Basin Rainmaker 2704  
Basin Joy 1036  
BPF DR J 2110  
Shipwheel Pinetop 515  
Sitz Upward 307R #  
Sitz Barbaramere Nell 653  
Apex Focus 053  
DR J Miss Time E31

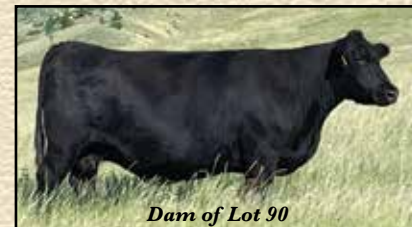
Sitz Far & Wide 6908  
Shipwheel Georgina 151  
Dr J Miss Apex Focus 053-L60

EPDs	
CED	+5
BW	+3.5
WW	+68
YW	+119
MILK	+22

BW	205 WT	WR	YR	Scrotal	SC
86	598	95	92	36	+1.54
Dam BR	Dam WR	Dam YR	RE	FAT	Claw
11/97	11/100	9/99	+6.2	+0.46	+3.38
					Angle
					+4.3

Calving Ease Score: 1 Front Foot Score: 4  
Disposition Score: 4.5 Hind Foot Score: 4

- A good all-around Rainmaker here with longevity bred in.
- Donor dam has proven herself worthy and we flushed her last year at 12 yrs old. She is pictured here at 13 and looks to have many more years in her.



Dam of Lot 90

## 91 SHIPWHEEL RENOWN 3526

Reg:\*20927070 • Calved: 03/31/23



S A V Renown 3439 #  
Ideal 0026 Rito of REN  
Ideal 7005 of 0116 Erilou

Rito 707 of Ideal 3407 7075  
S A V Blackcap May 4136  
Coleman Emblazon 0116  
Ideal 5724 of 9524 Erilou  
Basin Rainmaker 2704  
Basin Joy 1036  
Shipwheel Montana 2600  
Shipwheel Chloe 5125

Basin Rainmaker 4404 #  
Shipwheel Chloe 144  
Shipwheel Chloe 8100

EPDs	
CED	+12
BW	-1.6
WW	+64
YW	+122
MILK	+35

BW	205 WT	WR	YR	Scrotal	SC
47	579	97	100	34	+1.19
Dam BR	Dam WR	Dam YR	RE	FAT	Claw
1/80	1/97	1/100	+6.8	+0.32	+3.0
					Angle
					+4.0

Calving Ease Score: 3 Front Foot Score: 4.5  
Disposition Score: 4 Hind Foot Score: 4.5

- Calving ease and growth in this good Renown. His daughters should be outstanding.
- First calf heifer dam has "A" ratings in every category and bred back first cycle A.I. with a Dreamer heifer calf.



### SHIPWHEEL RENOWN 3545

Reg:\*20927078 • Calved: 03/17/23



S A V Renown 3439 #  
Ideal 0026 Rito of REN  
Ideal 7005 of 0116 Eirilou

Rito 707 of Ideal 3407 7075  
S A V Blackcap May 4136  
Coleman Emblazon 0116  
Ideal 5724 of 9524 Eirilou  
Connealy Judgment  
KG Miss Magic 1443  
S A V Resource 1441 #  
Dr J Ms Wide Track 374 M15

KG Justified 3023 #  
Shipwheel Pinetop 1164  
Shipwheel Pinetop 517 #

EPDs	
CED	+8
BW	+2
WW	+63
YW	+116
MILK	+27

BW	205 WT	WR	YR	Scrotal	SC
58	633	106	104	34.5	+1.33
Dam BR					MB
1/96					+5.7
Dam WR					RE
1/106					+4.8
Dam YR					FAT
1/104					+0.74

Calving Ease Score: 2 Front Foot Score: 5  
Disposition Score: 4 Hind Foot Score: 5

- A moderate framed, balanced trait, calving ease bull with an interesting pedigree.
- First calf heifer ET dam is moderate and easy fleshing with a tidy udder and small teats.
- Pathfinder donor granddam.
- Donor 3rd dam is the mother to Shipwheel Montana.



### SHIPWHEEL CONFEDERATE 3531

Reg:\*20939504 • Calved: 03/29/23



U-2 Coalition 206C #  
Shipwheel Confederate 1507  
Shipwheel Pinetop 932

HF Syndicate 213Z  
U2 Erelite 109Z  
LD Capitalist 316 #  
Shipwheel Pinetop 651 #  
Bar Wick Eureka 943 310  
Duff BI 619 LadyPop 1017  
S A V Regard 4863 #  
Shipwheel Enchantress 353

Duff Honcho 426  
Shipwheel Enchantress 177  
Shipwheel Enchantress 648

EPDs	
CED	-3
BW	+3.7
WW	+81
YW	+134
MILK	+32

BW	205 WT	WR	YR	Scrotal	SC
69	641	108	103	35.5	-0.06
Dam BR					RE
1/112					+8.6
Dam WR					FAT
1/108					-0.07
Dam YR					Claw
1/103					+4.6

Calving Ease Score: 1 Front Foot Score: 4.5  
Disposition Score: 4.5 Hind Foot Score: 4.5

- A moderate framed, excellent footed bull with a nice profile with impressive growth numbers.
- First calf heifer dam is deep ribbed with an excellent udder and is off to a good start.
- 3rd dam is the mother to Lot 48.



### SHIPWHEEL ALS DIGNITY 3547

Reg:\*20929371 • Calved: 03/21/23



Sitz Resilient 10208  
SITZ Dignity 599J  
SITZ Barabaramere Nell 53F #

Sitz Stellar 726D #  
Sitz Miss Burgess 1856  
Sitz Invasion 574D  
SITZ Barabaramere Nell 105D  
LD Capitalist 316 #  
Musgrave Prim Lassie 163-386  
S Chisum 6175 #  
Shipwheel Eriskay 034

Musgrave 316 Exclusive  
Shipwheel ALS Eriskay 1152  
Shipwheel Eriskay 330 #

EPDs	
CED	+8
BW	+1
WW	+71
YW	+115
MILK	+28

BW	205 WT	WR	YR	Scrotal	SC
55	689	116	105	33.5	-0.01
Dam BR					MB
1/91					+5.5
Dam WR					RE
1/116					+1.25
Dam YR					FAT
1/105					-0.005

Calving Ease Score: 3 Front Foot Score: 5  
Disposition Score: 4 Hind Foot Score: 5

- A unique pedigree on this moderate framed, excellent footed, heifer bull backed by some powerful cows. He was a standout at weaning time.
- First calf heifer dam is moderate and feminine with a very nice udder. She raised this dandy and bred back first cycle A.I. for her second.
- Pathfinder donor granddam and the mother to Lot 67.



### SHIPWHEEL DIGNITY 3507

Reg:\*20927060 • Calved: 04/15/23



Sitz Resilient 10208  
SITZ Dignity 599J  
SITZ Barabaramere Nell 53F #  
Shipwheel Resource 8518  
Shipwheel Pinetop 058  
Shipwheel Pinetop 8149

Sitz Stellar 726D #  
Sitz Miss Burgess 1856  
Sitz Invasion 574D  
SITZ Barabaramere Nell 105D  
Shipwheel Resource 5621  
WMR Pride 03  
Bruin Torque 5261 #  
Shipwheel Pinetop 154

EPDs	
CED	+7
BW	+1.9
WW	+68
YW	+113
MILK	+26

BW	205 WT	WR	YR	Scrotal	SC
86	645	107	110	34.5	+4.3
Dam BR					MB
2/103					+4.1
Dam WR					RE
2/109					+1.17
Dam YR					FAT
2/109					+0.32

Calving Ease Score: 2 Front Foot Score: 4.5  
Disposition Score: 4 Hind Foot Score: 4.5

- A moderate framed, long bodied, excellent footed bull.
- Young dam hales from many generations of pretty cows.



### SHIPWHEEL DIGNITY 3546

Reg:\*20927079 • Calved: 03/23/23



Sitz Resilient 10208  
SITZ Dignity 599J  
SITZ Barabaramere Nell 53F #  
KG Justified 3023 #  
Shipwheel Pinetop 1170  
Shipwheel Pinetop 517 #

Sitz Stellar 726D #  
Sitz Miss Burgess 1856  
Sitz Invasion 574D  
SITZ Barabaramere Nell 105D  
Connealy Judgment  
KG Miss Magic 1443  
S A V Resource 1441 #  
Dr J Ms Wide Track 374 M15

EPDs	
CED	+2
BW	+9
WW	+69
YW	+115
MILK	+25

BW	205 WT	WR	YR	Scrotal	SC
74	620	104	101	36	+4.1
Dam BR					MB
1/119					+6.2
Dam WR					RE
1/104					+8.1
Dam YR					FAT
1/101					+0.29

Calving Ease Score: 1 Front Foot Score: 4.5  
Disposition Score: 3.5 Hind Foot Score: 4.5

- Excellent feet under this long strided, athletic bull. He will cover the cows in the big country.
- First calf heifer dam is moderate and deep with an excellent udder. She bred back first cycle A.I. for her second.
- Pathfinder donor granddam.
- Donor 3rd dam is the mother to Shipwheel Montana.



### SHIPWHEEL DIGNITY 3539

Reg:\*20927074 • Calved: 03/31/23



Sitz Resilient 10208  
SITZ Dignity 599J  
SITZ Barabaramere Nell 53F #  
Shipwheel Dreamer 8522  
Shipwheel Enchantress 1123  
Shipwheel Enchantress 6130

Sitz Stellar 726D #  
Sitz Miss Burgess 1856  
Sitz Invasion 574D  
SITZ Barabaramere Nell 105D  
S A V Renown 3439 #  
WMR Pride 03  
Connealy Thunder #  
Shipwheel Enchantress 8184

EPDs	
CED	+4
BW	+3.3
WW	+63
YW	+108
MILK	+27

BW	205 WT	WR	YR	Scrotal	SC
71	616	104	99	35	+7.6
Dam BR					MB
1/114					+1.2
Dam WR					RE
1/104					+1.07
Dam YR					FAT
1/99					-0.31

Calving Ease Score: 1 Front Foot Score: 4  
Disposition Score: 4 Hind Foot Score: 4.5

- A moderate framed, big ribeye bull backed by one of our most influential cows.
- First calf heifer dam is deep and soft-made with a very nice udder.
- Donor 3rd dam is the great 8184 cow.

## 98 SHIPWHEEL RENOWN 3540

Reg:\*20927075 • Calved: 03/29/23



S A V Renown 3439 #  
Ideal 0026 Rito of REN  
Ideal 7005 of 0116 EriLou

Rito 707 of Ideal 3407 7075  
S A V Blackcap May 4136  
Coleman Emblazon 0116  
Ideal 5724 of 9524 EriLou  
Bar Wick Eureka 943 310  
Duff Bl 619 LadyPop 1017  
Sitz Far & Wide 6908  
Shipwhel Chloe 001

EPDs	
CED	+2
BW	+1.3
WW	+56
YW	+106
MILK	+21

Duff Honcho 426  
Shipwheel Chloe 1124  
Shipwheel Chloe 4106

BW	205 WT	WR	YR	Scrotal	SC
72	576	97	92	34	+9.5
Dam BR		Dam WR		Dam YR	RE
1/116		1/97		1/92	+5.8
					FAT
					+0.37

Calving Ease Score: 1 Front Foot Score: 4  
Disposition Score: 4 Hind Foot Score: 4

- A solid, functional cow maker.
- First calf heifer dam is a typical deep ribbed, big bodied, excellent uddered Honcho. She bred back first cycle A.I. for her second.

## 99 SHIPWHEEL RENOWN 3524

Reg:\*20927069 • Calved: 03/25/23



S A V Renown 3439 #  
Ideal 0026 Rito of REN  
Ideal 7005 of 0116 EriLou

Rito 707 of Ideal 3407 7075  
S A V Blackcap May 4136  
Coleman Emblazon 0116  
Ideal 5724 of 9524 EriLou

EPDs	
CED	+7
BW	+8
WW	+75
YW	+127
MILK	+36

Basin Rainmaker 4404 #  
Shipwheel Crissy 115  
Shipwheel Crissy 981

Basin Rainmaker 2704  
Basin Joy 1036  
LD Capitalist 316 #  
Shipwheel Crissy 414

BW	205 WT	WR	YR	Scrotal	SC
50	627	105	100	31.5	+8.2
Dam BR		Dam WR		Dam YR	RE
1/84		1/105		1/100	+6.1
					FAT
					+0.38

Calving Ease Score: 2 Front Foot Score: 4  
Disposition Score: 4.5 Hind Foot Score: 4

- Extra maternal power behind this calving ease Renown. His daughters will be the keeper kind.
- First calf heifer dam is feminine and gentle with an excellent udder. She bred back with twins for her second.

## 100 SHIPWHEEL RAINMAKER 3566

Reg:\*20940636 • Calved: 04/27/23



Basin Rainmaker 4404 #  
Shipwheel Rainmaker 0538  
Shipwheel Pinetop 887

Basin Rainmaker 2704  
Basin Joy 1036  
BPF DR J 2110  
Shipwheel Pinetop 515  
S A V 004 Density 4336 #  
Falcon Blackbird 6071  
Sitz Rainmaker 6536  
Apexette Lass 4412 #

EPDs	
CED	-2
BW	+5.7
WW	+66
YW	+123
MILK	+25

Bruin Torque 5261 #  
Shipwheel Lass 9142  
Shipwheel Lass 942

BW	205 WT	WR	YR	Scrotal	SC
103	587	97	99	33.5	+6.0
Dam BR		Dam WR		Dam YR	RE
3/108		3/102		3/102	+7.3
					FAT
					+0.48

Calving Ease Score: 1 Front Foot Score: 4.5  
Disposition Score: 4 Hind Foot Score: 4.5

- Boat loads of maternal power combined with solid performance here.
- Young dam is long bodied and gentle with an outstanding Torque udder.

## 101 SHIPWHEEL RAINMAKER 3636

Reg:\*20940646 • Calved: 04/28/23



Basin Rainmaker 4404 #  
Shipwheel Rainmaker 0538  
Shipwheel Pinetop 887

Basin Rainmaker 2704  
Basin Joy 1036  
BPF DR J 2110  
Shipwheel Pinetop 515  
Rito 707 of Ideal 3407 7075  
S A V Blackcap May 4136  
Apex Wide Track 374  
DR J Miss Guru I6

EPDs	
CED	+6
BW	+1.6
WW	+52
YW	+100
MILK	+36

S A V Resource 1441 #  
Shipwheel Pinetop 513  
Dr J Ms Wide Track 374 M15

BW	205 WT	WR	YR	Scrotal	SC
90	620	98	99	36	+1.52
Dam BR		Dam WR		Dam YR	RE
6/104		6/99		4/97	+5.0
					FAT
					+0.29

Calving Ease Score: 1 Front Foot Score: 4  
Disposition Score: 4 Hind Foot Score: 4

- A good looking, strong topped, double bred Pinetop. Full ET sisters are on each side of his pedigree.
- ET dam is part of a very successful flush and has been a consistent producer for many years.

## 102 SHIPWHEEL DIGNITY 3535

Reg:\*20927073 • Calved: 03/23/23



Sitz Resilient 10208  
SITZ Dignity 599J  
SITZ Barbamere Nell 53F #

Sitz Stellar 726D #  
Sitz Miss Burgess 1856  
Sitz Invasion 574D  
SITZ Barbamere Nell 105D

EPDs	
CED	+2
BW	+1.7
WW	+50
YW	+92
MILK	+20

U-2 Coalition 206C #  
Shipwheel Eola 193  
Shipwheel Eola 310 #

HF Syndicate 213Z  
U2 Erelite 109Z  
Shipwheel Far & Wide 1558  
Shipwheel Eola 179

BW	205 WT	WR	YR	Scrotal	SC
69	592	99	97	36.5	+2.2
Dam BR		Dam WR		Dam YR	RE
1/112		1/99		1/97	+7.1
					FAT
					+0.05

Calving Ease Score: 1 Front Foot Score: 4.5  
Disposition Score: 4.5 Hind Foot Score: 4

- A nice profile to this good footed, gentle bull.
- First calf heifer dam is excellent uddered and gentle. She bred back first cycle A.I. for her second.

## 103 SHIPWHEEL DREAMER 3617

Reg:\*20918240 • Calved: 05/01/23



S A V Renown 3439 #  
Shipwheel Dreamer 8522  
WMR Pride 03

Rito 707 of Ideal 3407 7075  
S A V Blackcap May 4136  
WMR Timeless 458 #  
WMR Pride 857  
TC Forthright 9284  
TC Blackbird 0022 #  
BPF 752 Freestyle 0111  
DR J Miss Guru I60

EPDs	
CED	+8
BW	+5
WW	+50
YW	+98
MILK	+39

Bruin Torque 5261 #  
Shipwheel Lass 9142  
Shipwheel Lass 942

BW	205 WT	WR	YR	Scrotal	SC
85	564	89	97	38	+1.52
Dam BR		Dam WR		Dam YR	RE
5/99		5/96		4/98	+8.3
					FAT
					+0.32

Calving Ease Score: 2 Front Foot Score: 4.5  
Disposition Score: 4.5 Hind Foot Score: 4.5

- A deep ribbed, soft-made, cow maker with very good feet and disposition.
- Dam is deep bodied and easy fleshing with great mothering ability.
- Pathfinder granddam is currently 10 and still in production.

**104 SHIPWHEEL DREAMER 3669**  
 Reg:\*20929113 • Calved: 04/22/23

S A V Renown 3439 #  
**Shipwheel Dreamer 8522**  
 WMR Pride 03

Sitz Far & Wide 6908  
**Triple E Coquette 018B**  
 Triple E Coquette 099T

Rito 707 of Ideal 3407 7075  
 S A V Blackcap May 4136  
 WMR Timeless 458 #  
 WMR Pride 857

Sitz Upward 307R #  
 Sitz Barbaramere Nell 653  
 G A R US Premium Beef #  
 Triple E Coquette 932 #

EPDs	
CED	-1
BW	+3.3
WW	+53
YW	+97
MILK	+33

BW	205 WT	WR	YR	Scrotal	SC
78	499	100	100	34	MB +.41
Dam BR		Dam WR		Dam YR	
8/103		8/100		8/101	

Calving Ease Score: 1 Front Foot Score: 4  
 Disposition Score: 4 Hind Foot Score: 4

- A bull that is genetically very good but was mixed up from his mother and orphaned for a couple months. His daughters should be outstanding.
- Dam is a consistent producing cow with a picture-perfect udder. She was purchased as a yearling from a longtime friend and customer, Russ Emtman, WA.

**107 SHIPWHEEL RIGHT TIME 3518**  
 Reg:\*20918271 • Calved: 04/18/23

Sitz Right Time 8034  
**S Right Time 7861**  
 S Queen Essa 367

Shipwheel Resource 5621  
**Shipwheel Pinetop 0118**  
 Shipwheel Pinetop 0244

Leachman Right Time 338-5605 #  
 Sitz Florabelle Fanny 1293 #  
 S Chisum 6175 #  
 S Queen Essa 208 #  
 S A V Resource 1441 #  
 Apex Eriskay 5506 #  
 Apex High Time 665  
 D R J Miss Rolls Royce F17 #

EPDs	
CED	+7
BW	+2.5
WW	+68
YW	+109
MILK	+23

BW	205 WT	WR	YR	Scrotal	SC
89	637	106	103	37	MB +.47
Dam BR		Dam WR		Dam YR	
2/94		2/103		2/100	

Calving Ease Score: 2 Front Foot Score: 4  
 Disposition Score: 4 Hind Foot Score: 4

- A long spined bull backed by one of our very best cow families.
- Young dam is very attractive in every way and could make pathfinder like many cows prior to her.

**105 SHIPWHEEL DREAMER 3650**  
 Reg:\*20918258 • Calved: 04/22/23

S A V Renown 3439 #  
**Shipwheel Dreamer 8522**  
 WMR Pride 03

Shipwheel Vance 2606  
**MY Erica 1603**  
 MY Chism 1401

Rito 707 of Ideal 3407 7075  
 S A V Blackcap May 4136  
 WMR Timeless 458 #  
 WMR Pride 857

TC Vance 011 #  
 Shipwheel Eriskay 075  
 S Chisum 6175 #  
 MY Tradition 0103

EPDs	
CED	-3
BW	+2.3
WW	+59
YW	+106
MILK	+28

BW	205 WT	WR	YR	Scrotal	SC
83	628	99	92	31.5	MB +.08
Dam BR		Dam WR		Dam YR	
6/101		6/103		2/98	

Calving Ease Score: 1 Front Foot Score: 4  
 Disposition Score: 4 Hind Foot Score: 4.25

- Another moderate framed, cow maker Dreamer son.
- Dam was purchased from MY Angus, MT and is doing a fine job for us.

**108 SHIPWHEEL DREAMER 3557**  
 Reg:\*20918278 • Calved: 04/17/23

S A V Renown 3439 #  
**Shipwheel Dreamer 8522**  
 WMR Pride 03

LT Monument 7201  
**Shipwheel Eola 982**  
 Shipwheel Eola 418

Rito 707 of Ideal 3407 7075  
 S A V Blackcap May 4136  
 WMR Timeless 458 #  
 WMR Pride 857

Baldrige Blacktop B228  
 LT Miss Wix 2242  
 Connealy Earnan 076E #  
 Shipwheel Eola 1108

EPDs	
CED	+3
BW	+2.0
WW	+68
YW	+112
MILK	+24

BW	205 WT	WR	YR	Scrotal	SC
82	576	96	91	36	MB +.51
Dam BR		Dam WR		Dam YR	
3/92		3/95		2/97	

Calving Ease Score: 1 Front Foot Score: 4  
 Disposition Score: 4.5 Hind Foot Score: 4

- A good solid bull here from a long line of pretty cows with longevity bred in.
- Young dam is awfully easy on the eyes.
- 3rd dam is currently 13 years old and still in production.

**106 SHIPWHEEL DREAMER 3626**  
 Reg:\*20918245 • Calved: 04/28/23

S A V Renown 3439 #  
**Shipwheel Dreamer 8522**  
 WMR Pride 03

CTS Remedy 1T01 #  
**Shipwheel Enchantress 691**  
 Shipwheel Enchantress 1102

Rito 707 of Ideal 3407 7075  
 S A V Blackcap May 4136  
 WMR Timeless 458 #  
 WMR Pride 857

Connealy Thunder #  
 CTS 7V03 Bellemere Maid 9T02  
 Kesslers Frontman R001 #  
 Shipwheel Enchantress 987

EPDs	
CED	+4
BW	+9
WW	+48
YW	+81
MILK	+33

BW	205 WT	WR	YR	Scrotal	SC
76	589	93	93	37	MB +.19
Dam BR		Dam WR		Dam YR	
5/88		5/93		4/91	

Calving Ease Score: 2 Front Foot Score: 4.25  
 Disposition Score: 4 Hind Foot Score: 4.25

- A good Dreamer son much like the two previous bulls. He should sire some outstanding replacements.
- Dam is an angular, moderate framed, gentle cow with a good udder and feet.

**109 SHIPWHEEL RIGHT TIME 3506**  
 Reg:\*20918264 • Calved: 04/20/23

Sitz Right Time 8034  
**S Right Time 7861**  
 S Queen Essa 367

Shipwheel Eisenhower 8625  
**Shipwheel Gloria 036**  
 Shipwheel Gloria 853

Leachman Right Time 338-5605 #  
 Sitz Florabelle Fanny 1293 #  
 S Chisum 6175 #  
 S Queen Essa 208 #  
 K A Eisenhower  
 Shipwheel Primrose 686  
 S A V Resource 1441 #  
 Shipwheel Gloria 322 #

EPDs	
CED	+4
BW	+1.4
WW	+65
YW	+107
MILK	+34

BW	205 WT	WR	YR	Scrotal	SC
72	578	96	95	38	MB +1.02
Dam BR		Dam WR		Dam YR	
2/79		2/96		2/93	

Calving Ease Score: 2 Front Foot Score: 4  
 Disposition Score: 4 Hind Foot Score: 4

- Plenty of maternal bred into this Right Time.
- Young dam is moderate and easy fleshing with an excellent udder.
- Granddam is a powerful, high production cow that will be flushed next year.
- Donor 3rd dam is currently 11 and still in production.

# 110 SHIPWHEEL RIGHT TIME 3597

Reg:\*20918226 • Calved: 04/29/23



Sitz Right Time 8034  
S Right Time 7861  
S Queen Essa 367

Leachman Right Time 338-5605 #  
Sitz Florabelle Fanny 1293 #  
S Chisum 6175 #  
S Queen Essa 208 #  
R R Rito 707 #  
Coleman Donna 714  
WMR Timeless 458 #  
WMR Pride 857

EPDs	
CED	-2
BW	+4.5
WW	+68
YW	+108
MILK	+25

Coleman Knight 209  
Shipwheel Pride 807  
WMR Pride 03

BW	205 WT	WR	YR	Scrotal	SC
95	645	102	88	36	+1.12
Dam BR		Dam WR		Dam YR	MB
4/104		4/103		3/98	+5.1
					RE
					+4.8
					FAT
					+0.22

Calving Ease Score: 1 Front Foot Score: 4.5  
Disposition Score: 4 Hind Foot Score: 4.5

Claw	+2.5
Angle	+3.6

- Another good Right Time son backed by powerful maternal.
- Young ET dam is an ideal angus female and brings in a good one every year.
- Donor granddam is the mother to Shipwheel Dreamer.

# 111 SHIPWHEEL BLS RIGHT TIME 3567

Reg:\*20918284 • Calved: 04/16/23



Sitz Right Time 8034  
S Right Time 7861  
S Queen Essa 367

Leachman Right Time 338-5605 #  
Sitz Florabelle Fanny 1293 #  
S Chisum 6175 #  
S Queen Essa 208 #  
Coleman Charlo 0256 #  
S A V Blackcap May 4136  
Shipwheel Montana 2600  
Apexette Rachel 2011

EPDs	
CED	+6
BW	+3.9
WW	+92
YW	+148
MILK	+14

S A V Rairdance 6848 #  
Shipwheel BLS Rachel 9141  
Shipwheel BLS Rachel 510

BW	205 WT	WR	YR	Scrotal	SC
92	637	106	102	39.5	+1.25
Dam BR		Dam WR		Dam YR	MB
2/100		2/105		2/103	-1.15
					RE
					+4.8
					FAT
					+0.40

Calving Ease Score: 1 Front Foot Score: 4  
Disposition Score: 4 Hind Foot Score: 4

Claw	+4.7
Angle	+4.1

- Extra length and performance bred into this 7861 son.
- Would recommend to use him as a terminal bull.
- Dam is a super long bodied, long strided, young cow.

# 112 SHIPWHEEL ESSENTIAL 3520

Reg:\*20918272 • Calved: 04/13/23



Shipwheel Resource 5621  
Shipwheel Essential 9536  
Shipwheel Pinetop 720 #

S A V Resource 1441 #  
Apex Eriskay 5506 #  
LT Regions 4110  
Shipwheel Pinetop 572  
Basin Rainmaker 2704  
Basin Joy 1036  
Sitz Far & Wide 6908  
Apex Eriskay 600

EPDs	
CED	+13
BW	+4
WW	+71
YW	+133
MILK	+32

Basin Rainmaker 4404 #  
Shipwheel Eriskay 0138  
Shipwheel Eriskay 4139

BW	205 WT	WR	YR	Scrotal	SC
68	599	99	102	38	+2.20
Dam BR		Dam WR		Dam YR	MB
2/82		2/98		2/101	+4.9
					RE
					+7.6
					FAT
					+0.07

Calving Ease Score: 3 Front Foot Score: 4  
Disposition Score: 4.5 Hind Foot Score: 4

Claw	+5.0
Angle	+5.4

- A good calving ease Essential son with solid growth numbers.
- Young dam is one of the prettiest cows we own and catches the eye of many visitors. Boat loads of longevity and gorgeous udders bred into this cow family.

# 113 SHIPWHEEL RAINMAKER 3568

Reg:\*20940639 • Calved: 04/17/23



Basin Rainmaker 4404 #  
Shipwheel Rainmaker 0538  
Shipwheel Pinetop 887

Basin Rainmaker 2704  
Basin Joy 1036  
BPF DR J 2110  
Shipwheel Pinetop 515  
Musgrave Big Sky #  
Flag Queen W 00649  
WMR Timeless 458 #  
WMR Pride 857

Musgrave Sky High 1535 #  
Shipwheel Pride 801  
WMR Pride 03

EPDs	
CED	+5
BW	+2.8
WW	+67
YW	+115
MILK	+22

BW	205 WT	WR	YR	Scrotal	SC
86	608	101	98	34.5	+1.2
Dam BR		Dam WR		Dam YR	MB
4/96		4/101		4/103	+6.4
					RE
					+8.5
					FAT
					+0.32

Calving Ease Score: 1 Front Foot Score: 4  
Disposition Score: 4.5 Hind Foot Score: 4

Claw	+3.6
Angle	+4.4

- Maternal and performance bred into this 0538 son.
- Dam is a deep bodied, easy fleshing, consistent producer.
- Granddam is the mother to Shipwheel Dreamer.

# 114 SHIPWHEEL CONFEDERATE 3555

Reg:\*20939522 • Calved: 04/19/23



U-2 Coalition 206C #  
Shipwheel Confederate 1507  
Shipwheel Pinetop 932

HF Syndicate 213Z  
U2 Erelite 109Z  
LD Capitalist 316 #  
Shipwheel Pinetop 651 #  
LD Capitalist 316 #  
MA Black Bess 642 #  
Shipwheel Chisum 5533  
Shipwheel Pinetop 508

Musgrave Fundamental  
Shipwheel Pinetop 940  
Shipwheel Pinetop 757

EPDs	
CED	+4
BW	+3
WW	+54
YW	+101
MILK	+36

BW	205 WT	WR	YR	Scrotal	SC
80	602	100	104	34	+8.8
Dam BR		Dam WR		Dam YR	MB
3/105		3/99		2/102	+6.0
					RE
					+6.5
					FAT
					+0.05

Calving Ease Score: 2 Front Foot Score: 4  
Disposition Score: 4.5 Hind Foot Score: 4

Claw	+4.5
Angle	+5.0

- Two of our very best cow families behind this guy.
- Young dam is a long-bodied, consistent producer.

# 115 SHIPWHEEL DIGNITY 3564

Reg:\*20927080 • Calved: 04/21/23



Shipwheel Resource 5621  
SITZ Dignity 599J  
SITZ Bararamere Nell 53F #

Sitz Stellar 726D #  
Sitz Miss Burgess 1856  
Sitz Invasion 574D  
SITZ Bararamere Nell 105D  
S A V Resource 1441 #  
Apex Eriskay 5506 #  
S A V Resource 1441 #  
Dr J Ms Wide Track 374 M15

Shipwheel Resource 5621  
Shipwheel Pinetop 9115  
Shipwheel Pinetop 513

EPDs	
CED	+6
BW	+3
WW	+58
YW	+102
MILK	+23

BW	205 WT	WR	YR	Scrotal	SC
97	681	113	102	38	+4.5
Dam BR		Dam WR		Dam YR	MB
3/114		3/110		3/104	+0.5
					RE
					+4.6
					FAT
					+0.22

Calving Ease Score: 1 Front Foot Score: 4  
Disposition Score: 4.5 Hind Foot Score: 4.5

Claw	+2.1
Angle	+3.1

- A good footed, moderate framed, gentle bull.
- Young dam is a deep, long, wedge shaped cow. She raised a top seller to Thompson's, at Whitlash, MT in 2023.
- Granddam is the mother to Lot 101.
- Donor 3rd dam is the mother to Shipwheel Montana.



# Selling 40 Shipwheel Bred Heifers

- A.I. and natural bred
- April calving
- Detailed supplement sheet available upon request and sale day

The females sell immediately after the bulls.

## Up & Coming Shipwheel Herd Sires



### MILLARS HONDO 349

Reg: 20845840

- B Bar Windy 7 3575  
 B Bar Eulima 357  
 Millars Duke 816  
 Tombstone 050 #  
 Millars Queen Lass 5273 #  
 Millars Queen Lass 3276  
 S A V Renown 3439 #  
 Rito 707 of Ideal 3407 7075  
 S A V Blackcap May 4136  
 Millars Goldie 9284 #  
 Connealy Reflection #  
 Millars Goldie 0284  
 Millars Goldie 2184 #

CED	+5
BW	+1.6
WW	+88
YW	+150
MILK	+34
SC	+1.14
MB	+1.15
RE	+1.56
FAT	+0.25
Claw	+0.43
Angle	+0.43

Owned with Millar Angus, SD and Whistling Winds Angus, MT  
 Leased to Beef 360  
 Semen Available



### SHIPWHEEL BLS BRAVADO 1536

Reg: \*20364988

- Coleman Charlo 0256 #  
 O C C Paxton 730P #  
 Coleman Bravo 6313 #  
 Bohi Abigale 6014  
 Coleman Donna 714  
 Connealy Onward #  
 Coleman Donna 386  
 Shipwheel Ideal 4223 7571  
 Ideal 4223 of 1168 Blkbrd  
 Shipwheel Lady 569  
 Shipwheel BLS Rachel 966  
 S A V Resource 1441 #  
 Shipwheel BLS Rachel 725  
 Apexette Rachel 2011

CED	+18
BW	-1.4
WW	+63
YW	+115
MILK	+22
SC	+1.60
MB	+0.41
RE	+0.44
FAT	+0.31
Claw	+0.30
Angle	+0.37

Owned with Scott Knutson, MT  
 Leased to Beef 360  
 Semen Available

# Up & Coming Shipwheel Herd Sires



**SHIPWHEEL RAINMAKER 2504**

## SHIPWHEEL RAINMAKER 2504

Reg: \*20601793

Basin Rainmaker 2704  
**Basin Rainmaker 4404 #**  
 Basin Joy 1036  
  
 S A V Resource 1441 #  
**Shipwheel Chloe 845**  
 Shipwheel Chloe 263 #

Basin Rainmaker P175 #  
 Basin Erica 7520 BV #  
 Basin Payweight 107S #  
 Basin Joy 566T  
 Rito 707 of Ideal 3407 7075  
 S A V Blackcap May 4136  
 Sitz Far & Wide 6908  
 Apexette Chloe 4099 #

CED	-1
BW	+4.6
WW	+65
YW	+120
MILK	+31
SC	+1.71
MB	+5.6
RE	+4.2
FAT	+0.18
Claw	+0.23
Angle	+0.35

Owned with Judd Hoos, NE  
 Semen Available



**SHIPWHEEL RAINMAKER 2554**

## SHIPWHEEL RAINMAKER 2554

Reg: \*20601723

Basin Rainmaker 2704  
**Basin Rainmaker 4404 #**  
 Basin Joy 1036  
  
 Pyramid Strategy 4086  
**Shipwheel Chloe 011**  
 Shipwheel Chloe 743

Basin Rainmaker P175 #  
 Basin Erica 7520 BV #  
 Basin Payweight 107S #  
 Basin Joy 566T  
 S A V Resource 1441 #  
 Glacial 20N BlackbirdEve 29R  
 Shipwheel Upward 2517  
 Shipwheel Chloe 5124

CED	+4
BW	+3.6
WW	+72
YW	+129
MILK	+24
SC	+1.08
MB	+6.7
RE	+4.9
FAT	+0.34
Claw	+0.29
Angle	+0.37

Owned with John Peebles, MT, and Kraye Angus, NE  
 Semen Available



**SHIPWHEEL TADASHII 2679**

## SHIPWHEEL TADASHII 2679

Reg: +\*20601824

Basin Rainmaker 2704  
**Basin Rainmaker 4404 #**  
 Basin Joy 1036  
  
 Connealy Packer 547  
**Shipwheel Gloria 322 #**  
 S Gloria 209 #

Basin Rainmaker P175 #  
 Basin Erica 7520 BV #  
 Basin Payweight 107S #  
 Basin Joy 566T  
 Feltons Meat Packer 62 #  
 Bestrelle of Conanga 539  
 Leachman Right Time #  
 S Gloria 0118

CED	+1
BW	+3.4
WW	+65
YW	+116
MILK	+31
SC	+1.45
MB	+5.9
RE	+5.5
FAT	+0.31
Claw	+0.24
Angle	+0.30

Owned with FBA Ranch, MT  
 Semen Available

*"At this point, I'm very comfortable recommending the SweetPro and Redmond salt combination. It sure has done the job for us."*

Klint Swanson | Shipwheel Cattle Company | Chinook, MT

MAXIMIZE GENETIC POTENTIAL

**Agri Best  
Feeds**

**EQUIPRIDE®  
EQUILIX®**



NO  
MOLASSES

NO  
MOLASSES  
OR UREA

FLAX  
& MOS  
STANDARD



60+  
MINERALS

NATURE'S  
BALANCE

## GARLIC

- Insect Repellent
- Antioxidant



NOW AVAILABLE WITH  
**NATURAL  
EXTRACTS**

## STRESS BLEND

- Gut Health
- Heat Stress



Ranch Delivery & Free Estimates Available.  
Call for details.

**866.601.6646**



**ARROWQUIP**



866.601.6646

agribestfeeds.com

We're Social!





**Shipwheel Cattle Co.**  
Klint & Lori Swanson  
2265 Gooseberry Lane  
Chinook, Montana 59523

RETURN SERVICE REQUESTED

