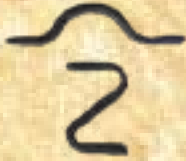


McCann



Red Angus

Selling 87 Bulls
4th Annual Bull Sale
Monday, March 4, 2024
Billings Livestock Commission
Billings, MT 1:00 PM MST



This sale will be broadcast live on the internet.

DVAuction
Broadcasting Real-Time Auctions

Real-time bidding & proxy bidding available.

Sale Day Weekend Schedule

Sunday, March 3, 2024:

Cattle Viewing All Day at Billings Livestock
Complimentary Dinner Starting at 5 -8p.m. MST
Bull Mountain Grille, 2376 Main St, Suite 818, Billings MT
Please RSVP 208-743-5517

Monday, March 4:

Join Us For A Complimentary Lunch at 11:00 AM MST
Sale Starts at 1:00 PM MST

Sales Staff

Greg Goggins, Auctioneer 406-200-1880

Curt Cox 307-630-4604



Curt Cox has worked as a Livestock Field Representative for the Wyoming Livestock Roundup up for the past 17 years. He grew up on his family commercial cattle operation South of Chugwater and graduated from the University of Wyoming. He currently lives in Casper with his wife Diane and twin sons Carter and Cooper.

Devin Murnin 406-696-1502



Devin Murnin has been with the Western Livestock Journal since 2015. He has helped cattle producers throughout the west market and procure cattle. Devin grew up on a commercial cow/calf ranch in eastern Montana and was very active in 4-H and FFA. He graduated from Colorado State University where he was on the Livestock Judging and Seedstock Merchandizing Teams.

Andy Rest 406-670-5678



Andy Rest represents the Cattle Business Weekly at livestock sales across Montana and northern Wyoming. He has over 40 years of experience in the livestock publication business and has previously been a regional manager for both the American Angus Association and North American Limousin Foundation. He lives in Billings, MT.

Matt Wznick 406-489-2414



Matt Wznick grew up in Sidney, Montana, and graduated from Dickinson State University with a bachelor degree in Accounting. He has been the Montana/Wyoming field rep for the Tri State Livestock News since January 2019.

Rachael Oliver 406-480-1569



Rachael is part of the commercial marketing team at the Red Angus Association of America. She is based out of Eastern Montana, covering most of Montana and all of North Dakota working alongside commercial and seedstock Red Angus producers. Please feel free to contact her with any questions about marketing and value added programs offered by the Red Angus Association of America.

Bidding Options

Intenet:  This sale will be broadcast live on the internet. **DVAuction** Streamlining Real Time Auctions Real Time Bidding & proxy bidding available.

Phone Bids: Buyers unable to attend the sale may call Jason Beck or Bill McCann Jr. or any of the sales staff listed above. If you would like to discuss the sale offering, call us (preferably several days prior to the sale) and describe your needs so that we can assist you in choosing the right cattle to fit your operation. Bids are handled in confidence with SATISFACTION GUARANTEE on all private treaty sales.

Wintering and Delivery

Bulls:

→ McCann Red Angus offers free delivery to buyers ranch for purchases of \$15,000 + or when purchasing four or more bulls. In addition, free delivery to central points in Montana, Idaho, and adjoining states. Beyond adjoining states we will deliver to central points at buyer's expense.
→ **\$100 discount per bull will be given if you haul your own bull on sale day**
→ **\$50 refund per bull if picked up in Billings prior to MARCH 15, 2024. Refund will be mailed following owner taking possession.**

Billings Livestock Commission policy requires that all sales must be settled at the end of the sale or within 5 days if prior arrangements have been made.

Contact Information

Office 208-743-5517
Jason Beck - Cattle Manager 208-790-0646
Bill McCann Jr. 208-791-6767

Additional Sale Day contacts:
Billings Livestock Commission
Office 406-245-4151

Accommodations

Please mention that you are attending the McCann Red Angus bull sale when making reservations to receive the best rate available!

Sale Headquarters:
La Quinta Inns & Suites 406-252-1188
5720 S. Frontage Rd. Billings, MT

Sale Order

A sale order supplement will be posted on the website a week before sale day!

Guarantee

The sale offering is guaranteed to be fertile and reproductively sound in accordance with the terms and conditions as recommended by the Red Angus Association of America. If a guarantee situation occurs, the buyer will have the option to select a suitable replacement, if available, or take a sale credit. All bulls are guaranteed through the first breeding season which is considered to end September 1 of the year of purchase and any claims need to be made by this date.

Herd Health

Herd health is monitored by Ferdinand Veterinary Clinic in Idaho and Alpine Veterinary Service in Missoula, MT. All cattle will be accompanied by proper health certificates for shipment and have had a complete vaccination program. Bulls will have passed a breeding soundness exam and fertility test prior to delivery.

Liability

All persons who attend the sale or view the cattle do so at their own risk. McCann Red Angus, McCann Ranch and Livestock Co., and Billings Livestock Auction (BLS) assume no liability - legal or otherwise - for any accidents that occur on sale or viewing premises.

Sale Day Announcements

All announcements from the auction block on sale day will take precedence over the information contained in the catalog. The Red Angus Association of America Terms and Conditions will apply if the terms and conditions printed here are not applicable.

Semen Interests and Possession

McCann Red Angus is retaining 1/3 revenue sharing semen interest in every bull selling in this sale. This gives McCann Red Angus the option to collect, use and market semen from any bull at the expense of McCann Red Angus and convenience of buyer. Full possession and full salvage value sells on all bulls unless otherwise identified prior to the sale. Retained possession bulls are available for semen collection only and are required to be returned by the purchaser for McCann Red Angus's natural breeding season. There is no guarantee on bulls to freeze semen unless specific terms are agreed to prior to sale. McCann Red Angus reserves the control of sale and distribution of all semen sold on co-owned bulls. Buyer's will be compensated upon receipt of payment for semen sold.

Supplemental sheet / Carcass Ultrasound Data

Scrotal measurements will be available sale day or prior to the sale at www.mccannredangus.com

Terms

Terms of sale are cash or check. All cattle must be settled for at the conclusion of the auction. Cattle will not be released from the sale premises until payment is received in full.

It is with a great deal of pride that I invite and welcome you to this 4th Annual McCann Red Angus Bull Sale. It doesn't seem like we have been in the market that long, but it sure has been enjoyable and a great experience for our family.

We moved the bulls to the Billings feedlot in October and have been amazed at their growth! They have been ultra-sounded, clipped and photographed to get them all ready so you will have the best information come sale time. It was a good summer in northern Idaho last year and our cattle did well on summer feed. Our son Jason has worked very hard to produce diverse bulls for this sale. There are some great Blue Collar, Mega, Propulsion, and Badge calves along with many other sire groups. All of his work has resulted in an excellent group of bulls to fit your needs.

Our family is doing well, and we have enjoyed spending time with our kids and 11 amazing grandchildren. It is amazing how quickly they grow up and how suddenly they change from year to year. This year, granddaughter, Gracie, has really stepped up to help keep the data organized, take pictures, and has produced her first catalog! Lori's in her 3rd session in the Idaho Legislature and Vice Chair of the Education Committee and is on the Agricultural Affairs and Commerce & Human Resources Committees. She is running for re-election this year so this spring will keep her on the campaign trail until the May primary.

A special thank you to our son, Jason for all the hours that he spends with our herd. He spends countless hours making sure they all get the best care possible. Our bulls are not babied but they are fed quality hay, grains, and a good supplement. These bulls are bred and built to work in all terrains and climates. We strive to produce high quality bulls with stamina to get the job done for you. Please come to the sale barn in Billings on Sunday to walk through the pens and get a sense of the docility and quality of this set of bulls. Jason and Luke will be available to answer any questions you might have. Should you desire to talk about your bull needs prior to sale weekend, feel free to call Jason at 208-790-0646 and he will help you select a few bulls to consider adding to your herd. Whether you are looking for a heifer bull or a herd sire, we have some great offerings for you. First and foremost, we select for disposition. The best bull in the herd with a bad attitude is not what any of us want. We breed for disposition and quality and will not keep any that don't meet the McCann Red Angus standard.

Again, on behalf of our family we would like to welcome you to this 4th Annual McCann Red Angus Bull Sale. Our main concern is helping your bottom line. We feel if you have the right quality bulls they will reflect in your bottom line. Whether you sell bulls, steers, or you're retaining the heifers for your herd, good bulls are the foundation of a great herd!

Bill, Jr.





1 MCCANN PROPULSION 3001

PIE ONE OF A KIND 777
BB PROPULSION 9906
BB MS GINNIE 6256

LELAND NORSEMAN Y141
CRUMP BO LASS 412
MDM BO LASS 155

S A V RESOURCE 1441
RED MRLA MISS 641Y
S A V HARVESTOR 0338
MRLA MISS 433T
BECKTON NEBULA P P707
BROWN MS DESTINATION T7664
CRUMP 300 ULTRA MAGNUM Y106
MLK CRK LAKOTA 059

	HB	GM	CED	BW	WW	YW	ADG	MILK	ME	HPG	CEM	STAY	MARB	YG	CW	REA	FAT
	75	64	11	-0.3	76	123	0.29	24	2	16	9	15	0.69	0.22	42	-0.02	0.03
POP	11%	11%	75%	79%	6%	8%	13%	67%	41%	4%	19%	51%	9%	98%	4%	83%	77%
WEIGHTS			87	700													
RATIOS →			104														
4848230 DOB:02-27-2023 A / 100% AR																	

2 MCCANN RESOURCE 3003X

S A V RESOURCE 1441
CRUMP RESOURCE 8201
MDM VERNICE 1020

5L MTN SIGN 435 - 10Z
CRUMP PINETA 4146
BUF CRK PINETA U092

RITO 707 OF IDEAL
S A V BLACKCAP MAY 4136
WPRA AVALANCHE 818
MDM VERNICE 81 - 8
5L ADVOCATE 817 - 14W
5L LAKOTA 1583 - 435
BUF CRK JULIAN R034
BUF CRK PINETA 4500

	HB	GM	CED	BW	WW	YW	ADG	MILK	ME	HPG	CEM	STAY	MARB	YG	CW	REA	FAT
	38	55	11	-0.0	70	120	0.31	25	8	11	5	15	0.41	0.10	35	0.34	0.04
POP	76%	19%	70%	82%	17%	10%	7%	60%	76%	66%	86%	43%	53%	66%	14%	14%	87%
WEIGHTS			86	650													
RATIOS →																	
4875734 DOB:01-17--2023 A / 100% AR																	

3 MCCANN PRIME PLUS 3005

LSF SRR RANCHER 7190E
LSF SRR PRIME PLUS 0111H
LSF SRR DELLA C5457

CRUMP SUPREME 7813
CRUMP SUZIE 0728
CRUMP SUZIE 7824

5L BOURNE 117 - 48A
LSF SRR RAINDANCE C5237
LSF TAKEOVER 9943W
LSF BLACKBIRD N3080 X0406

PIE ONE OF A KIND 352
MLK CRK SHEBA 048
5L DEFENDER 560 - 30Z
MDM SUSIE 133 - 9

	HB	GM	CED	BW	WW	YW	ADG	MILK	ME	HPG	CEM	STAY	MARB	YG	CW	REA	FAT
	15	65	10	-0.4	87	141	0.33	29	14	13	5	9	0.95	0.16	31	0.02	0.03
POP	97%	8%	89%	78%	1%	1%	3%	22%	96%	18%	83%	95%	1%	92%	24%	75%	77%
WEIGHTS			72	700													
RATIOS →			91														
4848196 DOB:02-18-2023 A / 100% AR																	

4 MCCANN AMERICAN DREAM 3007

LASO BUCKET LIST E8G
LASO AMERICAN DREAM G117J
LASO MS JOLINE Z146G

MR COACH 1296
CRUMP SAMARINDA 0114
CRUMP SAMARINDA 8132

5L ULTIMATUM 1893 - 03C
LASO LEANNA B4E
SPUR FRANCHISE OF GARTON
JEFFRIES MS JOLINE Z243

MR COACH 20003
M R ROYAL 4077S
VGW MY KIND 540
CRUMP SAMARINDA 530

	HB	GM	CED	BW	WW	YW	ADG	MILK	ME	HPG	CEM	STAY	MARB	YG	CW	REA	FAT
	64	11	-0.3	76	123	0.29	24	2	16	9	15	0.69	0.22	42	-0.02	0.03	
POP	11%	11%	75%	79%	6%	8%	13%	67%	41%	4%	19%	51%	9%	98%	4%	83%	77%
WEIGHTS			87	710													
RATIOS →			94														
4848178 DOB:03-16-2023 A / 100% AR																	



Lot 4



Lot 6



Lot 7

5 **MCCANN MEGA 3009**

CRUMP MAGNITUDE 5507
 CRUMP MEGA 8849
 MDM VERNICE 1020

BROWN PREMIER X7876
 CRUMP TABITHA 3140
 WPRA AVALANCHE 818
 MDM VERNICE 81 - 8

5L OUT IN FRONT 1701 - 457B
 9 MILE DYNABELLE 2555 - 8245
 5L DYNABELLE 212 - 2555

C-T THE QUEST 1103
 5L FIREFLY 3109 - 1701
 57 BOURNE 117 - 48A
 5L DYNABELLE 100 - 212

HB	GM	CED	BW	WW	YW	ADG	MILK	ME	HPG	CEM	STAY	MARB	YG	CW	REA	FAT	
16	43	13	-2.9	68	114		29	11	10	7	11	0.61	0.11	22	0.08	0.03	
POP %	97%	40%	44%	31%	23%	17%	14%	23%	90%	75%	51%	87%	16%	75%	57%	63%	78%
WEIGHTS			84	850				4848282		DOB:12-02-2022			A / 100% AR				
RATIOS →			102														

6 **MCCANN MEGA 3011**

CRUMP MAGNITUDE 5507
 CRUMP MEGA 8849
 MDM VERNICE 1020

BROWN PREMIER X7876
 CRUMP TABITHA 3140
 WPRA AVALANCHE 818
 MDM VERNICE 999

PIE CINCH 4126
 CRUMP SUSIE 904
 CRUMP SUSIE 7124

LSF SAGA 1040Y
 TKP BONNE BEL 110
 BROWN COMPLETE B238
 CRUMP SUSIE 5102

HB	GM	CED	BW	WW	YW	ADG	MILK	ME	HPG	CEM	STAY	MARB	YG	CW	REA	FAT	
28	34	11	-2.0	74	118		31	9	9	6	13	0.38	0.08	27	0.20	0.03	
POP %	89%	59%	45%	48%	11%	12%	17%	12%	83%	88%	66%	71%	59%	58%	37%	36%	69%
WEIGHTS			85	860				4848288		DOB:12-12-2022			A / 100% AR				
RATIOS →			104														

7 **MCCANN MEGA 3013**

CRUMP MAGNITUDE 5507
 CRUMP MEGA 8849
 MDM VERNICE 1020

BROWN PREMIER X7876
 CRUMP TABITHA 3140
 WPRA AVALANCHE 818
 MDM VERNICE 999

RED HILL 13R RIPPER 28U
 CRUMP AMBER Y187
 BUF CRK AMBER R087

RED HILL L081 RIPPER 13R
 RED HILL 17P BARMAID 46S
 BUF CRK ROMEO L081
 BUF CRK AMBER M033

HB	GM	CED	BW	WW	YW	ADG	MILK	ME	HPG	CEM	STAY	MARB	YG	CW	REA	FAT	
31	21	18	-4.2	59	98	0.24	35	1	7	10	12	0.24	0.04	13	0.10	0.02	
POP %	86%	84%	4%	13%	57%	51%	42%	1%	40%	98%	8%	80%	90%	32%	86%	58%	51%
WEIGHTS			87	730				4848320		DOB:02-02-2023			A / 100% AR				
RATIOS →																	



Crump Mega 8849, Sire





Lot 8

8

MCCANN RESOURCE 8201 - 3015

S A V RESOURCE 1441
 CRUMP RESOURCE 8201
 MDM VERNICE 1020

RITO 707 OF IDEAL 3407 - 7075
 S A V BLACKCAP MAY 4136
 WPRA AVALANCHE 818
 MDM VERNICE 81 - 8

MLK CRK EXPRESSIVE 1103
 CRUMP LASS 4122
 CRUMP MRM LASS 2147

MLK CRK EXPRESS 9127
 MLK CRK SHEBA 748
 MDM RED ROCK 88 - 0
 MDM MRM LASS 360

HB	GM	CED	BW	WW	YW	ADG	MILK	ME	HPG	CEM	STAY	MARB	YG	CW	REA	FAT
31	37	11	-1.4	61	100	0.24	24	5	12	4	14	0.39	0.05	25	0.36	0.04
85%	53%	79%	60%	50%	46%	40%	67%	60%	42%	94%	56%	57%	38%	47%	12%	85%
WEIGHTS		85	630	4848232		DOB:02-27-2023		A / 100% AR								
RATIOS →		103														

9

MCCANN BADGE 3017

RED U2 EMBLEM 147F
 RED U2Q BADGE 73H
 RED U-2 REBELLO 400C

RED YCLC COPENHAGEN 653C
 RED U2 MS DIVIDE 28Z
 RED U-2 RECON 192Y
 RED U-2 REBELLO 278Z

PIE CINCH 4126
 CRUMP SAMARINDA 820
 CRUMP SAMARINDA 678

LSF SAGA 1040Y
 TKP BONNE BEL 110
 5L DEFENDER 560-30Z
 MDM SAMARINDA 106-1

HB	GM	CED	BW	WW	YW	ADG	MILK	ME	HPG	CEM	STAY	MARB	YG	CW	REA	FAT
51	30	11	-3.2	54	80	0.16	25	-5	11	5	16	0.42	0.05	26	0.19	0.02
51%	67%	70%	26%	76%	83%	87%	59%	17%	56%	91%	38%	49%	43%	40%	38%	48%
WEIGHTS		87	600	4848278		DOB:02-19-2023		A / 100% AR								
RATIOS →																



Lot 10

10

MCCANN MEGA 3021

CRUMP MAGNITUDE 5507
 CRUMP MEGA 8849
 MDM VERNICE 1020

BROWN PREMIER X7876
 CRUMP TABITHA 3140
 WPRA AVALANCHE 818
 MDM VERNICE 999

RED HILL 13R RIPPER 28U
 CRUMP AMBER Y187
 BUF CRK AMBER R087

RED HILL L081 RIPPER 13R
 RED HILL 17P BARMAID 46S
 BUF CRK ROMEO L081
 BUF CRK AMBER M033

HB	GM	CED	BW	WW	YW	ADG	MILK	ME	HPG	CEM	STAY	MARB	YG	CW	REA	FAT
31	27	18	-4.2	59	98	0.24	35	1	7	10	12	0.23	0.05	13	0.10	0.02
86%	74%	4%	13%	57%	51%	42%	1%	40%	98%	8%	80%	74%	38%	86%	58%	51%
WEIGHTS		88	780	4848322		DOB:02-06-2023		A / 100% AR								
RATIOS →																



Lot 9

11

MCCANN MEGA 3019

CRUMP MAGNITUDE 5507
 CRUMP MEGA 8849
 MDM VERNICE 1020

BROWN PREMIER X7876
 CRUMP TABITHA 3140
 WPRA AVALANCHE 818
 MDM VERNICE 999

S A V RESOURCE 1441
 CRUMP EDELLA 9906
 VISION EDELLA 665

RITO 707 OF IDEAL 3407 7075
 S A V BLACKCAP MAY 4136
 BOYD ON TARGET 1083
 VISION EDELLA 1045

HB	GM	CED	BW	WW	YW	ADG	MILK	ME	HPG	CEM	STAY	MARB	YG	CW	REA	FAT
31	21	18	-4.2	59	98		35	1	7	10	12	0.24	0.04	13	0.10	0.02
86%	84%	4%	13%	57%	51%	42%	1%	40%	98%	8%	80%	90%	32%	86%	58%	51%
WEIGHTS		87	730	4861362		DOB:01-01-2023		A / 100% AR								
RATIOS →																



Lot 12

12 MCCANN PROPULSION 3023

PIE ONE OF A KIND 777
 BB PROPULSION 9906
 BB MS GINNIE 6256

S A V RESOURCE 1441
 RED MRLA MISS 641Y
 S A V HARVESTOR 0338
 MRLA MISS 433T

CRUMP OK 7773
 CRUMP SHEBA 9822
 CRUMP SHEBA 7786

PIE ONE OF A KIND 352
 CRUMP EMMA 220
 BROWN COMPLETE B238
 MLK CRK SHEBA 048

HB	GM	CED	BW	WW	YW	ADG	MILK	ME	HPG	CEM	STAY	MARB	YG	CW	REA	FAT	
66	38	11	-1.7	83	131	0.30	35	8	16	9	14	0.50	0.21	36	-0.02	0.04	
OP %	22%	50%	70%	54%	2%	3%	9%	1%	80%	3%	17%	61%	32%	98%	11%	83%	84%
WEIGHTS	87	810							4848308				DOB:02-03-2023			A / 100% AR	
RATIOS →	106																

13 MCCANN AMERICAN DREAM 3025

LASO BUCKET LIST E8G
 LASO AMERICAN DREAM G117J
 LASO MS JOLINE Z146G

5L ULTIMATUM 1893 - 03C
 LASO LEANNA B4E
 SPUR FRANCHISE OF GARTON
 JEFFRIES MS JOLINE Z243

LASO ADVOCATE W164A
 CRUMP SHOSHONE 5124
 MDM SHOSHONE 163-9

57 ADVOCATE 817 - 14W
 LCC TOPJACK LA073
 MDM SPECIAL EDITION 3 - 6
 MDM SHOSHONE 110 - 7

HB	GM	CED	BW	WW	YW	ADG	MILK	ME	HPG	CEM	STAY	MARB	YG	CW	REA	FAT	
20	49	11	-2.6	73	116	0.27	26	9	11	7	10	0.87	0.01	16	0.31	0.03	
OP %	95%	29%	71%	35%	12%	15%	22%	53%	81%	63%	42%	93%	2%	22%	79%	18%	78%
WEIGHTS	80	650							4848236				DOB:02-23-2023			A / 100% AR	
RATIOS →	96																



Lot 14

14 MCCANN BADGE 3027

RED U2 EMBLEM 147F
 RED U2Q BADGE 73H
 RED U-2 REBELLO 400C

RED YCLC COPENHAGEN 653C
 RED U2 MS DIVIDE 28Z
 RED U-2 RECON 192Y
 RED U-2 REBELLO 278Z

5L BIG IRON 4558-28B
 CRUMP AMBER 9842
 CRUMP AMBER Y187

5L DEFENDER 560-30Z
 5L FIREFLY 1065-4558
 RED HILL 13R RIPPER 28U
 BUF CRK AMBER R087

HB	GM	CED	BW	WW	YW	ADG	MILK	ME	HPG	CEM	STAY	MARB	YG	CW	REA	FAT	
34	34	12	-1.9	62	94	0.20	29	-6	9	5	12	0.40	0.10	27	0.05	0.01	
OP %	83%	61%	68%	50%	47%	58%	69%	22%	16%	91%	87%	78%	54%	68%	37%	69%	42%
WEIGHTS	86	670							4848312				DOB:02-03-2023			A / 100% AR	
RATIOS →	105																





**Sale Headquarters at La Quinta Inn & Suites
5720 South Frontage Road, Billings, MT 59102**

Plan To Join us Both Days

**Sunday, March 3rd, 5-8p.m. MST for a complimentary dinner
at**

Bull Mountain Grille

2376 Main Street, Suite 118, Billings, MT 59105:

Monday, March 4th at Billings Livestock Commission

2443 N. Frontage Road, Billings, MT 59101:

Complimentary lunch starting at 11:00 a.m. MST

Sale starts at 1:00 p.m. MST

**Please RSVP for dinner with Amanda Coleman
legalassistant@wvmccann.com or call 208-743-5517.**

Sale Will be Livestreamed in Lewiston

Monday, March 4, at Ernie's Steakhouse:

2305 Nez Perce Drive, Lewiston, ID 83501

Complimentary lunch starting at 11:00 a.m. PST

Sale to be livestreamed at 12:00 p.m. PST

Buyers will be able to bid through DVAuction through

McCann Red Angus

Please reserve your bid number with Amanda Coleman

legalassistant@wvmccann.com or call 208-743-5517

This sale will be broadcast live on the internet.
DVAuction
Broadcasting Real-Time Auctions
Real time bidding & proxy bidding available.





Lot 15

15 MCCANN BADGE 3029

RED U2 EMBLEM 147F
 RED U2Q BADGE 73H
 RED U-2 REBELLO 400C
 RED YCLC COPENHAGEN 653C
 RED U2 MS DIVIDE 28Z
 RED U-2 RECON 192Y
 RED U-2 REBELLO 278Z
 RED HILL L081 RIPPER 13R
 RED HILL 17P BARMAID 46S
 BUF CRK ROMEO L081
 BUF CRK AMBER M033
 RED HILL 13R RIPPER 28U
 CRUMP AMBER Y187
 BUF CRK AMBER R087

HB	GM	CED	BW	WW	YW	ADG	MILK	ME	HPG	CEM	STAY	MARB	YG	CW	REA	FAT
52	16	14	-2.0	65	96	0.20	1.21	-9	9	7	13	0.23	0.05	21	0.12	0.01
POP	48%	90%	39%	48%	37%	55%	65%	42%	11%	57%	97%	67%	91%	39%	64%	39%
WEIGHTS	86	690					4848324									
RATIOS →																

ATTENTION

SALE ORDER WILL BE POSTED
02/26/2024 ON OUR WEBSITE,
WWW.MCCANNREDANGUS.COM.
 IT WILL ALSO BE AVAILBE AT THE
 DOOR ON SALE DAY!



Lot 16

16 MCCANN AVALANCHE 3031

WPRA AVALANCHE 818
 MCCANN AVALANCHE 0174
 CRUMP SCARLET 8174
 PIE AVALANCHE 381
 WPRA BLACK RED JOY 508
 CRUMP RUNAWAY 5121
 MDM SUSIE 133-9
 S A V RESOURCE 1441
 MDM VERNICE 1020
 PIE ONE OF A KIND 352
 MLK CRK SHEBA 748
 CRUMP RESOURCE 8201
 CRUMP SHEBA 0736
 CRUMP SHEBA 7808

HB	GM	CED	BW	WW	YW	ADG	MILK	ME	HPG	CEM	STAY	MARB	YG	CW	REA	FAT
21	36	9	-1.9	79	129	0.31	30	11	10	4	12	0.43	0.10	27	0.07	0.02
POP	95%	56%	92%	50%	4%	4%	6%	16%	99%	71%	92%	80%	47%	71%	38%	65%
WEIGHTS	85	680					48488198									
RATIOS →	106															

17 MCCANN PROPULSION 3033

PIE ONE OF A KIND 777
 BB PROPULSION 9906
 BB MS GINNIE 6256
 S A V RESOURCE 1441
 RED MRLA MISS 641Y
 S A V HARVESTOR 0338
 MRLA MISS 433T
 BECKTON NEBULA P P707
 BROWN MS DESTINATION T7664
 CRUMP 300 ULTRA MAGNUM Y106
 MLK CRK LAKOTA 059
 LELAND NORSEMAN Y141
 CRUMP BO LASS 412
 MDM BO LASS 155

HB	GM	CED	BW	WW	YW	ADG	MILK	ME	HPG	CEM	STAY	MARB	YG	CW	REA	FAT
64	11	-0.3	76	123			24	2	16	9	15	0.69	0.22	42	-0.02	0.03
POP	11%	11%	75%	79%	6%	8%	13%	67%	41%	4%	19%	51%	9%	98%	4%	83%
WEIGHTS	87	680					4848230									
RATIOS →	104															



Lot 17



Lot 18



Lot 20

18

MCCANN FREIGHTLINER 3035

RRA ONE AND ONLY 733
NIO FREIGHTLINER 0068
RED U6 ALANA 13X

PIE ONE OF A KIND 352
WCR MISS BLACKBIRD DE 510Y
BLACK WHEEL ODYSSEY 117U
RED U6 ALANA 65T

PIE ONE OF A KIND 352
CRUMP SHEBA 7808
MLK CRK SHEBA 048

BUF CRK THE RIGHT KIND U199
PIE FAYETTE 1160
5L BLAZIN TRAIL 1336-237V
MLK CRK SHEBA 748

HB	GM	CED	BW	WW	YW	ADG	MILK	ME	HPG	CEM	STAY	MARB	YG	CW	REA	FAT	
35	34	11	-1.0	84	138	0.34	31	11	15	6	11	0.36	0.12	31	0.07	0.02	
TOP %	81%	59%	79%	67%	1%	1%	2%	11%	89%	8%	64%	87%	65%	76%	24%	65%	48%
WEIGHTS			72	720			4848268				DOB:02-14-2023			A / 100% AR			
RATIOS →																	

19

MCCANN BLUE COLLAR 3037

RED U-2 RECKONING 149A
RED U2 BLUE COLLAR 295E
RED U-2 ANEXA 439A

RED U-2 RECON 192Y
RED U-2 ANEXA 271Y
RED MINBURN COPENHAGEN 3Y
RED U-2 ANEXA 443Y

5L CANYON WATCH 1386-113Y
CRUMP SHOSHONE 359
MDM SHOSHONE 440

5L NIGHT WATCH 203-04T
5L RUBY 490-1386
GLACIER LOGAN 210
MDM SHOSHONE 1680

HB	GM	CED	BW	WW	YW	ADG	MILK	ME	HPG	CEM	STAY	MARB	YG	CW	REA	FAT	
74	37	13	-1.5	55	90	23	16	-5	9	9	17	0.45	0.07	17	0.01	0.02	
TOP %	11%	11%	75%	79%	6%	8%	13%	67%	41%	4%	19%	51%	9%	98%	4%	83%	77%
WEIGHTS			86	680			4848264				DOB:02-16-2023			A / 100% AR			
RATIOS →																	

20

MCCANN MEGA 3039

CRUMP MAGNITUDE 5507
CRUMP MEGA 8849
MDM VERNICE 1020

BROWN PREMIER X7876
CRUMP TABITHA 3140
WPRA AVALANCHE 818
MDM VERNICE 81-8

CRUMP RUNAWAY 5121
CRUMP SCARLET 8170
MDM SUSIE 133-9

CRUMP RUNAWAY 3178
MDM GLACIER REBAL 124-9
LJC JAVELIN M08
MDM SUSIE 91-6

HB	GM	CED	BW	WW	YW	ADG	MILK	ME	HPG	CEM	STAY	MARB	YG	CW	REA	FAT	
21	61	13	-1.9	78	128	0.31	30	10	9	7	11	0.67	0.05	32	0.20	0.01	
TOP %	95%	11%	47%	50%	5%	4%	5%	18%	86%	88%	51%	86%	11%	41%	20%	36%	28%
WEIGHTS			83	880			484876				DOB:12-19-2023			A / 100% AR			
RATIOS →			101														

21

MCCANN MONEY MAKER 3041

BIEBER CL STOCKMARKET E119
BIEBER MONEY MAKER H128
BIEBER SUSIE 571F

PIE STOCKMAN 4051
BIEBER CL ADELLE 475C
BIEBER LB MITTGATOR C314
BIEBER SUSIE 254A

CRUMP NEW DECADE 9341
MCCANN NEXA 1024
CRUMP NEXA 466

CRUMP MAGNITUDE 5507
TR BRANDY XT074
5L MTN SIGN 435-10Z
MDM NEXA 78-9

HB	GM	CED	BW	WW	YW	ADG	MILK	ME	HPG	CEM	STAY	MARB	YG	CW	REA	FAT	
44	64	16	-3.2	75	134	0.37	33	10	14	9	12	0.65	0.07	24	0.16	0.02	
TOP %	66%	9%	15%	26%	8%	2%	1%	5%	85%	17%	14%	80%	12%	54%	48%	45%	62%
WEIGHTS			77	680			4848200				DOB:03-11-2023			A / 100% AR			
RATIOS →			101														



Lot 19



Lot 21

22 MCCANN AMERICAN DREAM 3043

LASO BUCKET LIST E8G
 LASO AMERICAN DREAM G117J
 LASO MS JOLINE Z146G

5L ULTIMATUM 1893-03C
 LASO LEANNE B4E
 SPUR FRANCHISE OF GARTON
 JEFFRIES MS JOLINE Z243

BROWN COMPLETE B238
 CRUMP VERNICE 0154
 CRUMP VERNICE 436

LSF TAKEOVER 9943W
 BROWN MS P707 X7580
 LSF SAGA 1040Y
 CRUMP VERNICE 436

	HB	GM	CED	BW	WW	YW	ADG	MILK	ME	HPG	CEM	STAY	MARB	YG	CW	REA	FAT
	58	30	12	-3.4	68	101	0.20	28	5	13	6	16	0.68	0.04	14	0.20	0.03
TOP %	36%	67%	66%	23%	25%	45%	69%	28%	62%	28%	81%	29%	10%	37%	85%	36%	80%
WEIGHTS	82		690		4848186		DOB:02-07-2023		A / 100% AR								
RATIOS →	103																



Lot 22

23 MCCANN BADGE 3045

RED U2 EMBLEM 147F
 RED U2Q BADGE 73H
 RED U-2 REBELLO 400C

RED YCLC COPENHAGEN 653C
 RED U3 MS DIVIDE 28Z
 RED U-2 RECON 192Y
 RED U-2 REBELLO 278Z

VGW MY KIND 540
 CRUMP CEDAR 7712
 CRUMP CEDAR 4432

BUF CRK THE RIGHT KIND U199
 VGW W054-HAZY 1390
 WPRA AVALANCHE 818
 CRUMP CEDAR Y101

	HB	GM	CED	BW	WW	YW	ADG	MILK	ME	HPG	CEM	STAY	MARB	YG	CW	REA	FAT
	57	32	9	1.0	80	122	0.26	29	-1	13	5	15	0.35	-0.01	30	0.35	0.01
TOP %	39%	63%	92%	93%	3%	9%	29%	20%	30%	7%	89%	53%	67%	16%	26%	13%	38%
WEIGHTS	88		850		4848260		DOB:01-27-2023		A / 100% AR								
RATIOS →	106																



Lot 23

24 MCCANN MONEY MAKER 3047

BIEBER CL STOCKMARKET E119
 BIEBER MONEY MAKER H128
 BIEBER SUSIE 571F

PIE STOCKMAN 4051
 BIEBER CL ADELLE 475C
 BIEBER LB MITIGATOR C314
 BIEBER SUSIE 254A

PIE ONE OF A KIND 352
 CRUMP BO LASS 778
 MDM BO LASS 117-1

BUF CRK THE RIGHT KIND U199
 PIE FAYETTE 1160
 MDM CHATEAU 100-111-9
 MDM BO LASS 155

	HB	GM	CED	BW	WW	YW	ADG	MILK	ME	HPG	CEM	STAY	MARB	YG	CW	REA	FAT
	47	48	13	-1.4	83	138	0.34	28	15	13	9	14	0.52	0.04	33	0.34	0.02
TOP %	59%	30%	51%	60%	2%	1%	2%	31%	97%	20%	22%	65%	29%	34%	17%	14%	53%
WEIGHTS	82		810		4848262		DOB:01-25-2023		A / 100% AR								
RATIOS →	98																



Lot 24

25 MCCANN BADGE 3049

RED U2 EMBLEM 147F
 RED U2Q BADGE 73H
 RED U-2 REBELLO 400C

RED YCLC COPENHAGEN 653C
 RED U2 MS DIVIDE 28Z
 RED U-2 RECON 192Y
 RED U-2 REBELLO 278Z

PIE CINCH 4126
 CRUMP AMBER 9872
 CRUMP AMBER Y187

LSF SAGA 1040Y
 TKP BONNE BEL 110
 RED HILL 13R RIPPER 28U
 BUF CRK AMBER R087

	HB	GM	CED	BW	WW	YW	ADG	MILK	ME	HPG	CEM	STAY	MARB	YG	CW	REA	FAT
	53	13	11	-1.7	66	100	0.21	28	-5	11	5	14	0.19	0.12	26	0.02	0.02
TOP %	47%	93%	70%	54%	30%	45%	62%	31%	17%	65%	82%	55%	95%	76%	39%	75%	53%
WEIGHTS	84		710		4848316		DOB:01-22-2023		A / 100% AR								
RATIOS →	103																



Lot 25

26 MCCANN INNOVATION 3051

CRUMP INNOVATION 8185
 MCCANN INNOVATION 1085
 CRUMP EMILY 6610

S A V RESOURCE 1441
 MDM VERNICE 1020
 5L DEFENDER 560-30Z
 CRUMP EMMA 220

PIE CINCH 4126
 CRUMP BRANDY 9304
 TR BRANDY XTO74

LSF SAGA 1040Y
 TKP BONNE BEL 110
 TR EPIC ST618
 TR COCA RT537

	HB	GM	CED	BW	WW	YW	ADG	MILK	ME	HPG	CEM	STAY	MARB	YG	CW	REA	FAT
	11	16	12	-2.0	71	114	0.27	27	8	13	6	9	0.24	0.02	18	0.17	0.01
TOP %	90%	98%	56%	48%	17%	18%	22%	41%	75%	19%	81%	97%	90%	24%	74%	32%	37%
WEIGHTS	86		680		4848294		DOB:02-06-2023		A / 100% AR								
RATIOS →	104																



Lot 26

27 MCCANN MEGA 3053

CRUMP MAGNITUDE 5507
 CRUMP MEGA 8849
 MDM VERNICE 1020

BROWN PERMIER X7876
 CRUMP TABITHA 3140
 WPRA AVALANCHE 818
 MDM VERNICE 81-8

BIEBER LET'S ROLL B563
 BIEBER TORYANNA 245G
 BIEBER TORYANNA 612E

BIEBER ROLL IN DEEP Y118
 BASIN PRIMROSE 2043
 LOOSLI RIGHT ON 423
 BIEBER TORYANNA 211Y

	HB	GM	CED	BW	WW	YW	ADG	MILK	ME	HPG	CEM	STAY	MARB	YG	CW	REA	FAT
	37	55	15	-2.4	66	114	0.30	30	7	11	7	13	0.50	0.08	33	0.26	0.02
TOP %	78%	18%	25%	40%	31%	18%	10%	15%	71%	49%	45%	71%	32%	55%	18%	25%	62%
WEIGHTS	77		780		4848220		DOB:01-02-2023		A / 100% AR								
RATIOS →	95																



Lot 27

28 MCCANN AMERICAN DREAM 3055

LASO BUCKET LIST E8G
 LASO AMERICAN DREAM G117J
 LASO MS JOLINE Z146G

5L ULTIMATUM 1893-03C
 LASO LEANNA B4E
 SPUR FRANCHISE OF GARTON
 JEFFRIES MS JOLINE Z243

CRUMP SUPREME 7813
 CRUMP SUSIE 0140
 CRUMP SUSIE 3110

PIE ONE OF A KIND 352
 MLK CRK SHEBA 048
 5L SIGNATURE 5615
 MDM SUSIE 91-6

	HB	GM	CED	BW	WW	YW	ADG	MILK	ME	HPG	CEM	STAY	MARB	YG	CW	REA	FAT
	40	52	9	-1.5	79	131	0.32	2.54	15	14	6	14	0.74	0.09	30	0.17	0.02
TOP %	72%	24%	90%	58%	31%	3%	4%	24%	97%	16%	70%	65%	6%	63%	26%	43%	57%
WEIGHTS	79		650		4848184		DOB:02-18-2023		A / 100% AR								
RATIOS →	100																



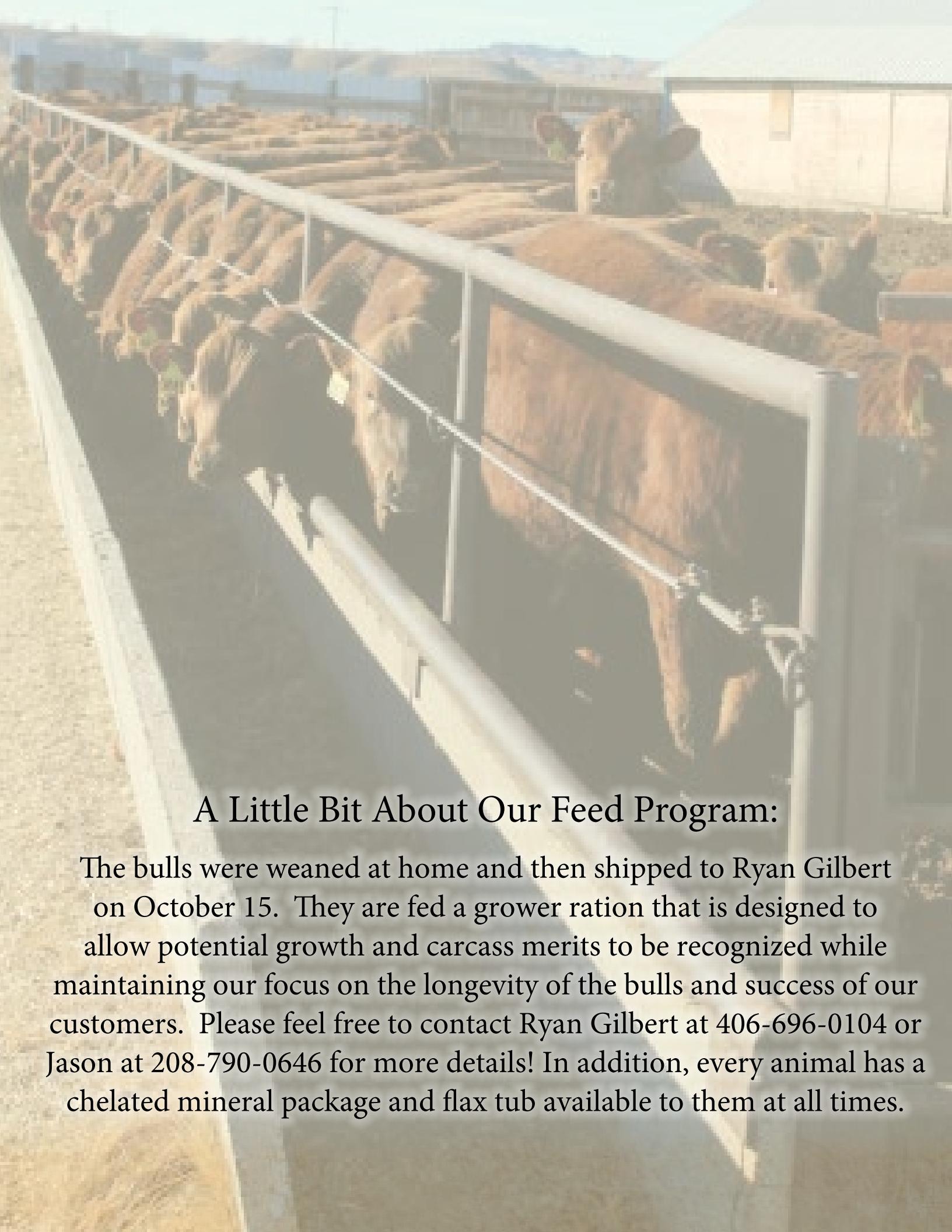
Lot 28

This sale will be broadcast live on the internet.



Real time bidding & proxy bidding available.





A Little Bit About Our Feed Program:

The bulls were weaned at home and then shipped to Ryan Gilbert on October 15. They are fed a grower ration that is designed to allow potential growth and carcass merits to be recognized while maintaining our focus on the longevity of the bulls and success of our customers. Please feel free to contact Ryan Gilbert at 406-696-0104 or Jason at 208-790-0646 for more details! In addition, every animal has a chelated mineral package and flax tub available to them at all times.



Lot 29

29

MCCANN PROPULSION 3057

PIE ONE OF A KIND 777
 BB PROPULSION 9906
 BB MS GINNIE 6256

MLK CRK EXPRESSIVE 1103
 CRUMP 3X 352
 MDM 3X 34-1

PIE ONE OF A KIND 352
 PIE JULY DALLES 569
 LARSON SUN KING 016
 BB MS GINNIE 6019-2057

MLK CRK EXPRESS 9127
 MLK CRK SHEBA 748
 WPR A AVALANCHE 818
 MDM 3X 28-9

HB	IGM	ICED	BW	WW	YW	ADG	MILK	ME	HPG	CEM	STAY	MARB	YG	CW	REA	FAT	
74	38	15	-3.4	69	104	0.22	32	1	16	9	15	0.61	0.14	22	0.05	0.04	
ROP	12%	51%	26%	23%	21%	38%	61%	8%	38%	3%	14%	53%	16%	86%	56%	69%	89%
WEIGHTS			78	740				4848226			DOB:02-02-2023		A / 100% AR				
RATIOS →																	



BB PROPULSION, SIRE





Lot 30

30 MCCANN FREIGHTLINER 3059

RRA ONE AND ONLY 733
NIO FREIGHTLINER 0068
RED U6 ALANA 13X

PIE ONE OF A KIND 352
CRUMP SHEBA 7808
MLK CRK SHEBA 048

PIE ONE OF A KIND 352
WCR MISS BLACKBIRD DE 510Y
BLACK WHEEL ODYSSEY 117U
RED U6 ALANA 65T

BUF CRK THE RIGHT KIND U199
PIE FAYETTE 1160
5L BLAZIN TRAIL 1336-237V
MLK CRK SHEBA 748

HB	GM	CED	BW	WW	YW	ADG	MILK	ME	HPG	CEM	STAY	MARB	YG	CW	REA	FAT
56	42	12	-0.4	94	157	0.40	31	11	15	8	14	0.22	0.07	43	0.32	0.01
TOP %	40%	42%	57%	78%	1%	1%	11%	89%	8%	40%	66%	92%	50%	4%	16%	37%
WEIGHTS	68		720	4848270		DOB:02-14-2023		A / 100% AR								
RATIOS →																

32 MCCANN PROPULSION 3063

PIE ONE OF A KIND 777
BB PROPULSION 9906
BB MS GINNIE 6256

LELAND NORSEMAN Y141
CRUMP BO LASS 412
MDM BO LASS 155

S A V RESOURCE 1441
RED MRLA MISS 641Y
S A V HARVESTOR 0338
MRLA MISS 433T

BECKTON NEBULA P P707
BROWN MS DESTINATION T7664
CRUMP 300 ULTRA MAGNUM Y106
MLK CRK LAKOTA 059

HB	GM	CED	BW	WW	YW	ADG	MILK	ME	HPG	CEM	STAY	MARB	YG	CW	REA	FAT
64	11	-0.3	76	123			24	2	16	9	15	0.69	0.22	42	-0.02	0.03
TOP %	11%	11%	75%	79%	6%	8%	13%	67%	41%	4%	19%	51%	9%	98%	4%	83%
WEIGHTS	87		600	4848230		DOB:02-27-2023		A / 100% AR								
RATIOS →	104															

31 MCCANN INNOVATION 3061

CRUMP INNOVATION 8185
MCCANN INNOVATION 1085
CRUMP EMILY 6610

BUFF CRK THE RIGHT KIND U199
CRUMP LAKOTA 8846
CRUMP LAKOTA 5506

S A V RESOURCE 1441
MDM VERNICE 1020
5L DEFENDER 560-30Z
CRUMP EMMA 220

BUF CRK LANCER R017
BUF CRK SHOSHONE R353
BROWN PREMIER X7876
CRUMP LAKOTA 309

HB	GM	CED	BW	WW	YW	ADG	MILK	ME	HPG	CEM	STAY	MARB	YG	CW	REA	FAT
49	52	15	-0.4	72	125	0.33	23	5	12	7	14	0.40	0.04	26	0.26	0.02
TOP %	23%	56%	26%	78%	13%	6%	3%	75%	62%	31%	51%	60%	54%	34%	39%	25%
WEIGHTS	85		830	4848286		DOB:02-03-2023		A / 100% AR								
RATIOS →	102															

33 MCCANN AMERICAN DREAM 3065

LASO BUCKET LIST E8G
LASO AMERICAN DREAM G117J
LASO MS JOLINE Z146G

CRUMP MAGNITUDE 5507
CRUMP CHAISIE 9322
CRUMP EMMA 220

5L ULTIMATUM 1893-03C
LASO LEANNA B4E
SPUR FRANCHISE OF GARTON
JEFFRIES MS JOLINE Z243

BROWN PREMIER X7876
CRUMP TABITHA 3140
BASIN EXT 8628
MDM EMMA 1210

HB	GM	CED	BW	WW	YW	ADG	MILK	ME	HPG	CEM	STAY	MARB	YG	CW	REA	FAT
41	58	13	-2.5	69	114	0.28	29	11	10	7	15	0.76	0.02	24	0.27	0.02
TOP %	70%	15%	54%	38%	22%	18%	17%	20%	90%	71%	57%	49%	6%	24%	48%	23%
WEIGHTS	79		700	4848298		DOB:02-16-2023		A / 100% AR								
RATIOS →	96															



Lot 31



Lot 33

34

MCCANN SPARTACUS 3067

BIEBER SPARTACUS A193
BIEBER ROU SPARTACUS D13
GHR CHINOOK W30

BIEBER ROUSE SAMURAI X22
BIEBER TILLY 233U
LJC MISSION STATEMENT P27
BASIN CHINOOK 08P6

PIE CINCH 4126
CRUMP PLEASURE 8812
CRUMP PLEASURE 6620

LSF SAGA 1040Y
TKP BONNE BEL 110
WPR AVALANCHE 818
MDM DONA PRIDE 31-7

	HB	GM	CED	BW	WW	YW	ADG	MILK	ME	HPG	CEM	STAY	MARB	YG	CW	REA	FAT
	46	20	12	-2.4	64	98	0.21	29	4	10	6	15	0.48	-0.01	9	0.25	0.03
TOP %	62%	85%	67%	40%	39%	51%	64%	24%	54%	68%	70%	44%	36%	14%	93%	27%	64%
WEIGHTS	85		660		4848284		DOB:01-26-2023		A / 100% AR								
RATIOS →	102																

35

MCCANN BIG IORN 3069

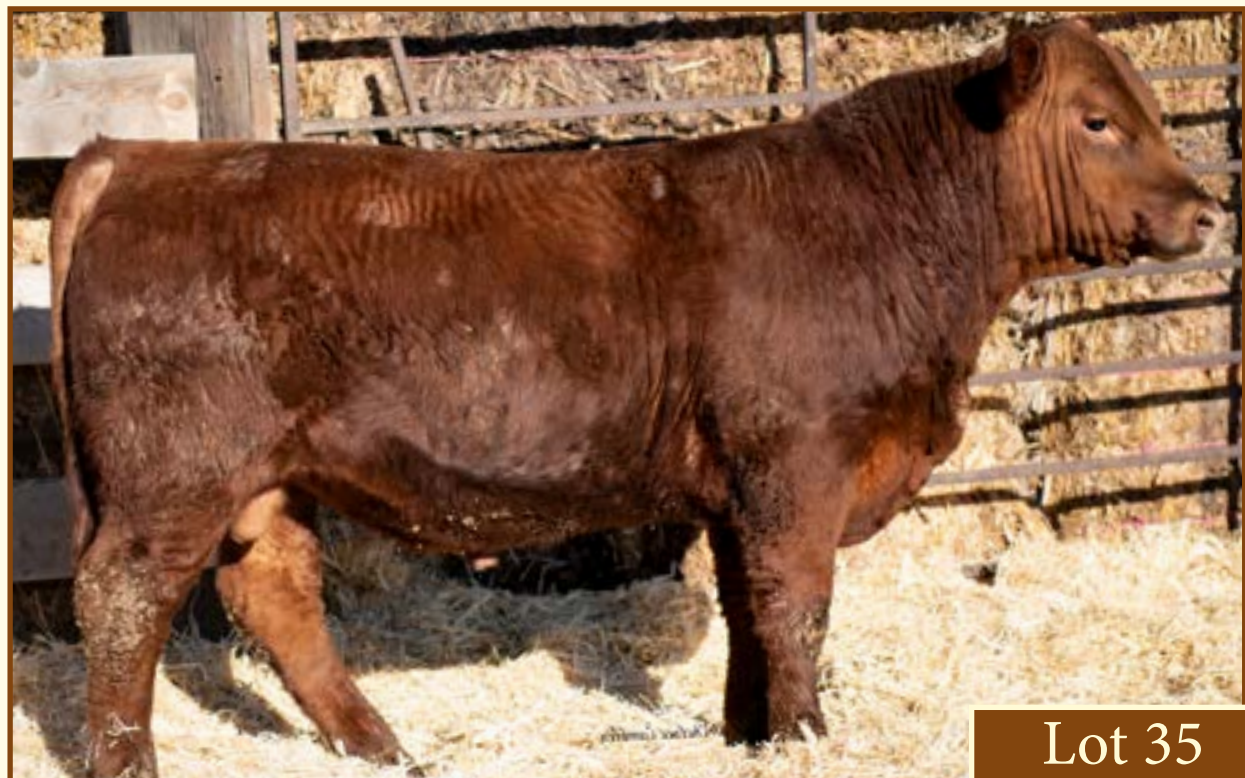
5L BIG IORN 4558-28B
MCCANN BIG IORN 1053
CRUMP NEXA 5126

5L DEFENDER 560-30Z
5L FIREFLY 1065-4558
MUSHRUSH LOCK 'N' LOAD U213
CRUMP NEXA 2111

BROWN PREMIER X7876
CRUMP VERNICE 536
CRUMP VERNICE 310

BECKTON NEBULA P P707
BROWN MS DESTINATION T7664
BIEBER ROOSEVELT W384
MDM VERNICE 6-6

	HB	GM	CED	BW	WW	YW	ADG	MILK	ME	HPG	CEM	STAY	MARB	YG	CW	REA	FAT
	62	40	8	-0.1	66	100	0.22	31	4	13	4	17	0.74	0.16	15	-0.07	0.05
TOP %	29%	47%	94%	82%	32%	46%	62%	11%	52%	25%	93%	19%	6%	92%	83%	89%	93%
WEIGHTS	88		690		4848244		DOB:02-11-2023		A / 100% AR								
RATIOS →	106																



Lot 35

36

MCCANN BLUE COLLAR 3071

RED U-2 RECKONING 149A
RED U2 BLUE COLLAR 295E
RED U-2 ANEXA 439A

RED U-2 RECON 192Y
RED U-2 ANEXA 271Y
RED MINBURN COPENHAGEN 3Y
RED U-2 ANEXA 443Y

CRUMP RESOURCE 8201
CRUMP EMMA 0190
CRUMP EMMA 220

S A V RESOURCE 1441
MDM VERNICE 1020
BASIN EXT 8628
MDM EMMA 1210

	HB	GM	CED	BW	WW	YW	ADG	MILK	ME	HPG	CEM	STAY	MARB	YG	CW	REA	FAT
	40	41	11	0.5	66	109	0.27	27	3	8	7	14	0.42	0.13	29	0.17	0.04
TOP %	73%	43%	72%	89%	32%	27%	24%	43%	45%	94%	45%	66%	49%	83%	28%	43%	88%
WEIGHTS	80		660		4848190		DOB:02-27-2023		A / 100% AR								
RATIOS →	101																



Lot 37



Lot 38



Lot 39

37

MCCANN BLUE COLLAR 3073

PIE ONE OF A KIND 777
BB PROPULSION 9906
BB MS GINNIE 6256

S A V RESOURCE 1441
RED MRLA MISS 641Y
S A V HARVESTOR 0338
MRLA MISS 433T

LELAND NORSEMAN Y141
CRUMP BO LASS 412
MDM BO LASS 155

BECKTON NEBULA P P707
BROWN MS DESTINATION T7664
CRUMP 300 ULTRA MAGNUM Y106
MLK CRK LAKOTA 059

	HB	GM	CED	BW	WW	YW	ADG	MILK	ME	HPG	CEM	STAY	MARB	YG	CW	REA	FAT
	64	11	-0.3	76	123	24	2	16	9	15	0.69	0.22	42	-0.02	0.03		
TOP %	11%	11%	75%	79%	6%	8%	13%	67%	41%	4%	19%	51%	9%	98%	4%	83%	77%
WEIGHTS	87		660		4848230		DOB:02-27-2023		A / 100% AR								
RATIOS →	104																

38

MCCANN BADGE 3075

RED U2 EMBLEM 147F
RED U2Q BADGE 63H
RED U-2 REBELLO 400C

RED YCLC COPENHAGEN 653C
RED U2 MS DIVIDE 28Z
RED U-2 RECON 192Y
RED U-2 REBELLO 278Z

CRUMP ASSAULT 6655
CRUMP NEXA 822
CRUMP NEXA 6168

5L DEFENDER 560-30Z
CRUMP CEDAR 4432
BIEBER LET'S ROLL B563
MDM NEXA 1390

	HB	GM	CED	BW	WW	YW	ADG	MILK	ME	HPG	CEM	STAY	MARB	YG	CW	REA	FAT
	50	20	11	-0.6	74	112	0.23	29	-1	12	6	14	0.27	0.11	36	0.22	0.03
TOP %	54%	85%	78%	74%	10%	21%	47%	20%	29%	35%	81%	60%	85%	73%	11%	32%	66%
WEIGHTS	87		780		4848280		DOB:01-25-2023		A / 100% AR								
RATIOS →	104																

39

MCCANN AMERICAN DREAM 3077

LASO BUCKET LIST E8G
LASO AMERICAN DREAM G117J
LASO MS JOLINE Z146G

5L ULTIMATUM 1893-03C
LASO LEANNA B4E
SPUR FRANCHISE OF GARTON
JEFFRIES MS JOLINE Z243

MR COACH 1296
CRUMP EMMA 9998
CRUMP EMMA 7804

MR COACH 20003
M R ROYAL 4077S
BROWN COMPLETE B238
CRUMP EMMA 220

	HB	GM	CED	BW	WW	YW	ADG	MILK	ME	HPG	CEM	STAY	MARB	YG	CW	REA	FAT
	29	45	11	-1.4	77	126	0.31	32	11	13	7	11	0.60	0.07	31	0.38	0.04
TOP %	88%	36%	76%	60%	5%	5%	7%	8%	90%	26%	58%	86%	18%	50%	24%	10%	87%
WEIGHTS	81		800		4848318		DOB:02-07-2023		A / 100% AR								
RATIOS →	98																



Lot 40

42

MCCANN BLUE COLLAR 3083

RED U-2 RECKONING 149A
 RED U2 BLUE COLLAR 295E
 RED U-2 ANEXA 439A

RED HILL 13R RIPPER 28U
 CRUMP AMBER Y187
 BUF CRK AMBER R087

RED U-2 RECON 192Y
 RED U-2 ANEXA 271Y
 RED MINBURN COPENHAGEN 3Y
 RED U-2 ANEXA 443Y

RED HILL L081 RIPPER 13R
 RED HILL 17P BARMAID 46S
 BUF CRK ROMEO L081
 BUF CRK AMBER M033

	HB	GM	CED	BW	WW	YW	ADG	MILK	ME	HPG	CEM	STAY	MARB	YG	CW	REA	FAT
	52	18	15	-2.0	61	95		33	-8	6	9	14	0.30	0.09	12	-0.01	0.03
POP %	48%	88%	26%	48%	52%	58%	63%	3%	14%	98%	11%	65%	79%	61%	89%	81%	69%
WEIGHTS				82	690					4848258							
RATIOS →																	



43

MCCANN BADGE 3085

RED U2 EMBLEM 147F
 RED U2Q BADGE 63H
 RED U-2 REBELLO 400C

RED YCLC COPENHAGEN 653C
 RED U2 MS DIVIDE 28Z
 RED U-2 RECON 192Y
 RED U-2 REBELLO 278Z

5L DEFENDER 560-30Z
 CRUMP CEDAR 443Z
 BIEBER LET'S ROLL B563
 MDM NEXA 1390

	HB	GM	CED	BW	WW	YW	ADG	MILK	ME	HPG	CEM	STAY	MARB	YG	CW	REA	FAT
	50	20	11	-0.6	74	112		29	-1	12	6	14	0.27	0.11	36	0.22	0.03
POP %	54%	85%	78%	74%	10%	21%	47%	20%	29%	35%	81%	60%	85%	73%	11%	32%	66%
WEIGHTS				87	870					4848280							
RATIOS →				104													

40

MCCANN INNOVATION 3079

CRUMP INNOVATION 8185
 MCCANN INNOVATION 1085
 CRUMP EMILY 6610

S A V RESOURCE 1441
 MDM VERNICE 1020
 5L DEFENDER 560-30Z
 CRUMP EMMA 220

5L BIG IORN 4558-28B
 CRUMP AMBER 9850
 CRUMP AMBER Y187

5L DEFENDER 560-30Z
 5L FIREFLY 1065-4558
 RED HILL 13R RIPPER 28U
 BUF CRK AMBER R087

	HB	GM	CED	BW	WW	YW	ADG	MILK	ME	HPG	CEM	STAY	MARB	YG	CW	REA	FAT
	14	32	14	-0.3	74	119	0.28	33	5	8	6	10	0.45	0.07	19	-0.01	0.01
POP %	97%	65%	37%	79%	10%	12%	18%	5%	62%	94%	74%	91%	42%	50%	71%	81%	30%
WEIGHTS				82	820					4848314							
RATIOS →				101													

41

MCCANN PROPULSION 3081

BB PROPULSION 9906
 BB MS GINNIE 6256

MLK CRK EXPRESSIVE 1103
 CRUMP 3X 352
 MDM 3X 34-1

PIE ONE OF A KIND 352
 PIE JULY DALLES 569
 LARSON SUN KING 016
 BB MS GINNIE 6019-2057

MLK CRK EXPRESS 9127
 MLK CRK SHEBA 748
 WPRA AVALANCHE 818
 MDM 3X 28-9

	HB	GM	CED	BW	WW	YW	ADG	MILK	ME	HPG	CEM	STAY	MARB	YG	CW	REA	FAT
	74	38	15	-3.4	69	104	0.22	32	1	16	9	15	0.61	0.14	22	0.05	0.04
POP %	12%	51%	26%	23%	21%	38%	61%	8%	38%	3%	14%	53%	16%	86%	56%	69%	89%
WEIGHTS				66	740					4848228							
RATIOS →																	



Lot 41



Lot 42

44 MCCANN FREIGHTLINER 3087

RRA ONE AND ONLY 733
NIO FREIGHTLINER 0068
RED U6 ALANA 13X

PIE ONE OF A KIND 352
WCR MISS BLACKBIRD DE 510Y
BLACK WHEEL ODYSSEY 117U
RED U6 ALANA 65T

BIEBER ROOSEVELT W384
CRUMP SAMARINDA 3160
MDM SAMARINDA 150-9

BIEBER ROUGH RIDER 10712
BIEBER SHEBA 9602
MDM CHATEAU 895
MDM SAMARINDA 56-7

HB	GM	CED	BW	WW	YW	ADG	MILK	ME	HPG	CEM	STAY	MARB	YG	CW	REA	FAT	
48	22	13	-0.2	76	121	0.29	29	6	9	7	15	0.14	0.14	31	0.18	0.04	
TOP %	56%	82%	51%	80%	7%	9%	14%	26%	64%	88%	45%	53%	98%	84%	22%	41%	88%
WEIGHTS			87	830			4848224				DOB:01-26-2023			A / 100% AR			
RATIOS →			104														



Lot 44

47 MCCANN BLUE COLLAR 3093

RED U-2 RECKONING 149A
RED U2 BLUE COLLAR 295E
RED U-2 ANEXA 439A

RED U-2 RECON 192Y
RED U-2 ANEXA 271Y
RED MINBURN COPENHAGEN 3Y
RED U-2 ANEXA 443Y

RED HILL 13R RIPPER 28U
CRUMP AMBER Y187
BUF CRK AMBER R087

RED HILL L081 RIPPER 13R
RED HILL 17P BARMAID 46S
BUF CRK ROMEO L081
BUF CRK AMBER M033

HB	GM	CED	BW	WW	YW	ADG	MILK	ME	HPG	CEM	STAY	MARB	YG	CW	REA	FAT	
52	20	15	-2.0	61	95		33	-8	6	9	14	0.31	0.07	12	0.05	0.03	
TOP %	48%	85%	26%	48%	52%	58%	63%	3%	14%	98%	76%	51%	76%	51%	88%	69%	69%
WEIGHTS			80	720			4848326				DOB:02-14-2023			A / 100% AR			
RATIOS →																	

48 MCCANN PROPULSION 3095

PIE ONE OF A KIND 777
BB PROPULSION 9906
BB MS GINNIE 6256

PIE ONE OF A KIND 352
PIE JULY DALLES 569
LARSON SUN KING 016
BB MS GINNIE 6019-2057

PIE CINCH 4126
CRUMP BRANDY 9308
TR BRANDY XT074

LSF SAGA 1040Y
TKP BONNE BEL 110
TR EPIC ST618
TR COCA RT527

HB	GM	CED	BW	WW	YW	ADG	MILK	ME	HPG	CEM	STAY	MARB	YG	CW	REA	FAT	
74	19	14	-3.5	70	112	0.26	31	2	17	9	14	0.35	0.21	22	-0.14	0.05	
TOP %	12%	87%	38%	21%	18%	22%	31%	10%	43%	1%	17%	57%	67%	98%	59%	95%	92%
WEIGHTS			83	670			4848296				DOB:02-11-2023			A / 100% AR			
RATIOS →			101														

45 MCCANN SPARTACUS 3089

BIEBER SPARTACUS A193
BIEBER ROU SPARTACUS D13
GHR CHINOOK W30

BIEBER ROUSE SAMURAI X22
BIEBER TILLY 233U
LJC MISSION STATEMENT P27
BASIN CHINOOK 08P6

CRUMP OK 7773
CRUMP SHEBA 9804
CRUMP SHEBA 7814

PIE ONE OF A KIND 352
CRUMP EMMA 220
BROWN COMPLETE B238
MLK CRK SHEBA 048

HB	GM	CED	BW	WW	YW	ADG	MILK	ME	HPG	CEM	STAY	MARB	YG	CW	REA	FAT	
52	56	14	-3.7	72	119	0.29	33	9	12	8	15	0.79	0.14	25	0.23	0.06	
TOP %	50%	17%	30%	19%	14%	11%	4%	81%	43%	35%	46%	4%	85%	46%	30%	98%	
WEIGHTS			76	620			4848306				DOB:03-08-2023			A / 100% AR			
RATIOS →			92														



Lot 45

49 MCCANN INNOVATION 3097

CRUMP INNOVATION 8185
MCCANN INNOVATION 1085
CRUMP EMILY 6610

S A V RESOURCE 1441
MDM VERNICE 1020
5L DEFENDER 560-30Z
CRUMP EMMA 220

PIE ONE OF A KIND 352
CRUMP SHEBA 7784
MLK CRK SHEBA 048

BUF CRK THE RIGHT KIND U199
PIE FAYETTE 1160
5L BLAZIN TRAIL 1336-237V
MLK CRK SHEBA 748

HB	GM	CED	BW	WW	YW	ADG	MILK	ME	HPG	CEM	STAY	MARB	YG	CW	REA	FAT	
14	56	8	1.0	88	147	0.37	30	17	14	4	11	0.50	0.10	45	0.26	0.01	
TOP %	97%	17%	95%	93%	1%	1%	1%	18%	99%	15%	95%	90%	32%	69%	2%	25%	39%
WEIGHTS			87	790			4850004				DOB:02-15-2023			A / 100% AR			
RATIOS →			104														

50 MCCANN RESOURCE 3099

RED U2 RESOURCE 33G
MCCANN RESOURCE 2283
CRUMP AMBER 9842

RED MRLA RESOURCE 137E
U2 BEAUTY 113Z
5L BIG IRON 4558-28B
CRUMP AMBER Y187

VGW MY KIND 540
CRUMP SHOSHONE 8112
CRUMP SHOSHONE 3174

BUF CRK THE RIGHT KIND U199
VGW W054-HAZY 1390
LSF RAB SOVEREIGN X7780
MDM SHOSHONE 98-1

HB	GM	CED	BW	WW	YW	ADG	MILK	ME	HPG	CEM	STAY	MARB	YG	CW	REA	FAT	
73	24	10	0.3	55	81	0.16	26	-5	15	7	16	0.39	0.00	8	-0.08	-0.01	
TOP %	13%	79%	87%	86%	71%	81%	88%	52%	17%	7%	62%	39%	57%	18%	94%	91%	5%
WEIGHTS			90	660			4848272				DOB:02-11-2023			A / 100% AR			
RATIOS →			109														

46 MCCANN AMERICAN DREAM 3091

LASO BUCKET LIST E8G
LASO AMERICAN DREAM G117J
LASO MS JOLINE Z146G

5L ULTIMATUM 1893-03C
LASO LEANNA B4E
SPUR FRANCHISE OF GARTON
JEFFRIES MS JOLINE Z243

CRUMP MISSION STATEMENT 6187
CRUMP DONA PRIDE 0164
CRUMP DONA PRIDE 416

LJC MISSION STATEMENT P27
TR BRANDY XT074
VRRR INDEED Z13
MDM DONA PRIDE 170

HB	GM	CED	BW	WW	YW	ADG	MILK	ME	HPG	CEM	STAY	MARB	YG	CW	REA	FAT	
39	49	7	0.0	78	126	0.30	30	11	11	5	14	0.71	0.03	26	0.26	0.02	
TOP %	74%	28%	97%	83%	5%	6%	10%	13%	90%	49%	86%	56%	8%	31%	40%	25%	45%
WEIGHTS			76	710			48488188				DOB:02-18-2023			A / 100% AR			
RATIOS →			96														



Lot 46



Lot 49



Lot 50

51 MCCANN BADGE 3101

RED U2 EMBLEM 147F
RED U2Q BADGE 73H
RED U-2 REBELLO 400C

RED YCLC COPENHAGEN 653C
RED U2 MS DIVIDE 28Z
RED U-2 RECON 192Y
RED U-2 REBELLO 278Z

CRUMP MAGNITUDE 5507
CRUMP AMBER 9312
CRUMP AMBER Y187

BROWN PREMIER X7876
CRUMP TABITHA 3140
RED HILL 13R RIPPER 28U
BUF CRK AMBER R087

HB	GM	CED	BW	WW	YW	ADG	MILK	ME	HPG	CEM	STAY	MARB	YG	CW	REA	FAT	
40	38	12	-1.2	69	108	0.24	32	0	9	6	14	0.37	0.05	31	0.18	0.01	
TOP %	72%	50%	63%	64%	22%	29%	41%	7%	30%	87%	81%	65%	63%	42%	24%	41%	28%
WEIGHTS			82	640			48488328				DOB:02-18-2023			A / 100% AR			
RATIOS →																	



52 MCCANN ENERGIZE 3103

BIEBER CL ATOMIC C218
BIEBER CL ENERGIZE F121
BIEBER CL ADELLE 575D

ANDRAS FUSION R236
BIEBER DATELINE 308Y
BIEBER HARD DRIVE Y120
BIEBER ADELLE 297Y

5L DEFENDER 560-30Z
CRUMP EMMA 6174
CRUMP EMMA 3147

5L ADVOCATE 817-14W
5L BLACK ADINA 525-560
BIEBER ROOSEVELT W384
MDM EMMA 1210

HB	GM	CED	BW	WW	YW	ADG	MILK	ME	HPG	CEM	STAY	MARB	YG	CW	REA	FAT	
35	43	18	-4.9	54	93	0.24	24	-1	13	7	12	0.48	-0.04	12	0.28	0.01	
TOP %	80%	40%	4%	7%	76%	62%	40%	68%	28%	18%	51%	82%	36%	9%	89%	22%	42%
WEIGHTS			70	630			4848254				DOB:02-17-2023			A / 100% AR			
RATIOS →			84														



Lot 52

53 MCCANN BLUE COLLAR 3105

RED U-2 RECKONING 149A
RED U2 BLUE COLLAR 295E
RED U-2 ANEXA 439A

RED U-2 RECON 192Y
RED U-2 ANEXA 271Y
RED MINBURN COPENHAGEN 3Y
RED U-2 ANEXA 443Y

CRUMP INNOVATION 8185
MCCANN BRANDY 1056
CRUMP BRANDY 7174

S A V RESOURCE 1441
MDM VERNICE 1020
CRUMP RUNAWAY 5121
TR BRANDY XT074

HB	GM	CED	BW	WW	YW	ADG	MILK	ME	HPG	CEM	STAY	MARB	YG	CW	REA	FAT	
11	49	12	0.5	79	130	0.32	29	5	7	7	9	0.45	0.12	37	0.27	0.04	
TOP %	98%	29%	62%	89%	4%	4%	5%	22%	58%	98%	57%	95%	42%	78%	10%	23%	84%
WEIGHTS			80	740			4848210				DOB:01-18-2023			A / 100% AR			
RATIOS →			104														



Lot 53

54 MCCANN ENERGIZE 3107

BIEBER CL ATOMIC C218
BIEBER CL ENERGIZE F121
BIEBER CL ADELLE 575D

ANDRAS FUSION R236
BIEBER DATELINE 308Y
BIEBER HARD DRIVE Y120
BIEBER ADELLE 297Y

RED MRL RESOURCE 137E
MCCANN CHEROKEE 1036
SRJJ CHEROKEE B45

MRLA RELOAD 56C
MRLA MISS 4422B
LELAND RED DIRECTION 8348U
MS HAMMEL CHEROKEE P145

HB	GM	CED	BW	WW	YW	ADG	MILK	ME	HPG	CEM	STAY	MARB	YG	CW	REA	FAT	
54	39	13	-2.4	61	100	0.25	26	1	18	7	12	0.43	0.07	22	0.18	0.03	
TOP %	44%	49%	44%	40%	52%	46%	39%	53%	40%	1%	47%	78%	47%	49%	58%	41%	68%
WEIGHTS			68	740			4848202				DOB:02-03-2023			A / 100% AR			
RATIOS →																	



Lot 54

55 MCCANN RESOURCE 3109

RED U2 RESOURCE 33G
MCCANN RESOURCE 1183
CRUMP AMBER 9842

RED MRLA RESOURCE 137E
U2 BEAUTY 113Z
5L BIG IRON 4558-28B
CRUMP AMBER Y187

CRUMP INNOVATION 8185
MCCANN MARIE 1054
MDM MRM LASS 1230

S A V RESOURCE 1441
MDM VERNICE 1020
MDM O'S CUBS DREAM 4-7
MDM MRM LASS 365

HB	GM	CED	BW	WW	YW	ADG	MILK	ME	HPG	CEM	STAY	MARB	YG	CW	REA	FAT	
38	46	11	1.8	80	127	0.29	27	4	8	6	14	0.44	0.16	34	0.14	0.04	
TOP %	75%	35%	76%	97%	3%	5%	11%	43%	53%	94%	78%	66%	45%	91%	14%	49%	85%
WEIGHTS			84	710			4848208				DOB:03-06-2023			A / 100% AR			
RATIOS →			109														



Lot 55

56 MCCANN BLUE COLLAR 3111

RED U-2 RECKONING 149A
RED U2 BLUE COLLAR 295E
RED U-2 ANEXA 439A

RED U-2 RECON 192Y
RED U-2 ANEXA 271Y
RED MINBURN COPENHAGEN 3Y
RED U-2 ANEXA 443Y

RED HILL 13R RIPPER 28U
CRUMP AMBER Y187
BUF CRK AMBER R087

RED HILL L081 RIPPER 13R
RED HILL 17P BARMAID 46S
BUF CRK ROMEO L081
BUF CRK AMBER M033

HB	GM	CED	BW	WW	YW	ADG	MILK	ME	HPG	CEM	STAY	MARB	YG	CW	REA	FAT	
52	19	15	-2.0	61	95	0.21	33	-8	6	9	14	0.30	0.07	12	0.05	0.03	
TOP %	48%	86%	26%	48%	52%	58%	63%	3%	14%	98%	11%	65%	79%	52%	88%	69%	69%
WEIGHTS			70	770			4848330				DOB:02-12-2023			A / 100% AR			
RATIOS →			84														



Lot 56

57 MCCANN BADGE 3113

RED U2 EMBLEM 147F
RED U2Q BADGE 73H
RED U-2 REBELLO 400C

RED YCLC COPENHAGEN 653C
RED U2 MS DIVIDE 28Z
RED U-2 RECON 192Y
RED U-2 REBELLO 278Z

MUSHRUSH LOCK 'N' LOAD U213
CRUMP NEXA 594
MDM NEXA 78-9

BUF CRK LANCER R017
MUSHRUSH PRIMROSE MM R213
RED SIX MILE SAKIC 832S
MDM NEXA 585

HB	GM	CED	BW	WW	YW	ADG	MILK	ME	HPG	CEM	STAY	MARB	YG	CW	REA	FAT	
66	32	10	0.0	72	110	0.23	29	-5	9	6	17	0.46	0.09	23	0.13	0.03	
TOP %	23%	65%	86%	83%	13%	25%	48%	25%	18%	91%	79%	24%	40%	60%	52%	51%	66%
WEIGHTS			87	750			4848252				DOB:02-25-2023			A / 100% AR			
RATIOS →			104														



Lot 57



Lot 58

60

MCCANN BLUE COLLAR 3119

RED U-2 RECKONING 149A
 RED U2 BLUE COLLAR 295E
 RED U-2 ANEXA 439A

RED U-2 RECON 192Y
 RED U-2 ANEXA 271Y
 RED MINBURN COPENHAGEN 3Y
 RED U-2 ANEXA 443Y

CRUMP DIRECT AFFECT 9861
 MCCANN SUSIE 1040
 CRUMP SUSIE 585

RED SIX MILE DEEP IMPACT 38D
 CRUMP RAM 4416
 BIEBER ROOSEVELT W384
 MDM SUSIE 64-1

HB	GM	CED	BW	WW	YW	ADG	MILK	ME	HPG	CEM	STAY	MARB	YG	CW	REA	FAT			
53	45	13	0.5	72	120	0.30	29	-1	8	7	15	0.37	0.15	33	0.14	0.04			
ROP %			47%	37%	53%	89%	13%	10%	9%	25%	29%	94%	42%	51%	63%	87%	18%	49%	84%
WEIGHTS			72	690					4848206		DOB:02-05-2023		A / 100% AR						
RATIOS →			95																

61

MCCANN ENERGIZE 3121

BIEBER CL ATOMIC C218
 BIEBER CL ENERGIZE F121
 BIEBER CL ADELLE 575D

ANDRAS FUSION R236
 BIEBER DATELINE 308Y
 BIEBER HARD DRIVE Y120
 BIEBER ADELLE 297Y

RED MRL RESOURCE 137E
 MCCANN SHEBA 1070
 CRUMP SHEBA 7806

MRLA RELOAD 56C
 MRLA MISS 4422B
 BROWN COMPLETE B238
 MILK CRK SHEBA 048

HB	GM	CED	BW	WW	YW	ADG	MILK	ME	HPG	CEM	STAY	MARB	YG	CW	REA	FAT			
39	47	14	-2.1	66	109	0.27	28	3	14	7	11	0.52	0.06	23	0.14	0.02			
ROP %			74%	32%	37%	45%	31%	27%	24%	28%	45%	10%	60%	85%	29%	46%	55%	49%	51%
WEIGHTS			71	660					4861016		DOB:02-03-2023		A / 100% AR						
RATIOS →																			

62

MCCANN BADGE 3123

RED U2 EMBLEM 147F
 RED U2Q BADGE 73H
 RED U-2 REBELLO 400C

RED YCLC COPENHAGEN 653C
 RED U2 MS DIVIDE 26Z
 RED U-2 RECON 192Y
 RED U-2 REBELLO 278Z

CRUMP MAGNITUDE 5507
 CRUMP AMBER 9312
 CRUMP AMBER Y187

BROWN PREMIER X7876
 CRUMP TABITHA 3140
 RED HILL 13R RIPPER 28U
 BUF CRK AMBER R087

HB	GM	CED	BW	WW	YW	ADG	MILK	ME	HPG	CEM	STAY	MARB	YG	CW	REA	FAT			
40	37	12	-1.2	69	108	0.24	32	0	9	6	14	0.36	0.05	31	0.18	0.01			
ROP %			72%	52%	63%	64%	22%	29%	41%	7%	30%	87%	81%	65%	65%	43%	24%	41%	28%
WEIGHTS			87	730					4848334		DOB:02-11-2023		A / 100% AR						
RATIOS →																			

58

MCCANN BLUE COLLAR 3115

RED U-2 RECKONING 149A
 RED U2 BLUE COLLAR 295E
 RED U-2 ANEXA 439A

RED U-2 RECON 192Y
 RED U-2 ANEXA 271Y
 RED MINBURN COPENHAGEN 3Y
 RED U-2 ANEXA 443Y

5L CANYON WATCH 1386-113Y
 CRUMP SHOSHONE 359
 MDM SHOSHONE 440

5L NIGHT WATCH 203-04T
 5L RUBY 490-1386
 GLACIER LOGAN 210
 MDM SHOSHONE 1680

HB	GM	CED	BW	WW	YW	ADG	MILK	ME	HPG	CEM	STAY	MARB	YG	CW	REA	FAT			
74	39	13	-1.5	55	90	0.22	32	-5	9	9	17	0.49	0.08	17	0.01	0.02			
ROP %			13%	48%	42%	58%	72%	68%	60%	6%	17%	87%	17%	21%	34%	59%	75%	77%	53%
WEIGHTS			86	760					4848332		DOB:02-10-2023		A / 100% AR						
RATIOS →																			

59

MCCANN PROPULSION 3117

PIE ONE OF A KIND 777
 BB PROPULSION 9096
 BB MS GINNIE 6256

PIE ONE OF A KIND 352
 PIE JULY DALLES 569
 LARSON SUN KING 016
 BB MS GINNIE 6019-2057

WPRVA AVALANCHE 818
 CRUMP VERNICE 255
 MDM VERNICE 45

PIE AVALANCHE 381
 WPRVA BLACK RED JOY 508
 MDM CUB 104
 MDM VERNICE 13

HB	GM	CED	BW	WW	YW	ADG	MILK	ME	HPG	CEM	STAY	MARB	YG	CW	REA	FAT			
65	21	11	-1.1	73	111	0.24	32	3	14	7	15	0.49	0.10	13	0.02	0.04			
ROP %			24%	84%	76%	65%	11%	23%	45%	6%	49%	11%	58%	46%	34%	71%	86%	75%	84%
WEIGHTS			84	760					4848222		DOB:02-19-2023		A / 100% AR						
RATIOS →			102																



Lot 59



Lot 61

63

MCCANN INNOVATION 3125

CRUMP INNOVATION 8185
MCCANN INNOVATION 1085
CRUMP EMILY 6610
BIEBER ROOSEVELT W384
CRUMP NEXA 630
CRUMP 3X 352
S A V RESOURCE 1441
MDM VERNICE 1020
5L DEFENDER 560-30Z
CRUMP EMMA 220
BIEBER ROUGH RIDER 10712
BIEBER SHEBA 9602
MLK CRK EXPRESSIVE 1103
MDM 3X 34-1

Table with 17 columns: HB, GM, CED, BW, WW, YW, ADG, MILK, ME, HPG, CEM, STAY, MARB, YG, CW, REA, FAT. Includes rows for weights and ratios.



Lot 63

64

MCCANN ENERGIZE 3127

BIEBER CL ATOMIC C218
BIEBER CL ENERGIZE F121
BIEBER CL ADELLE 575D
RED MRL RESOURCE 137E
MCCANN CHEROKEE 1036
SRJJ CHEROKEE B45
ANDRAS FUSION R236
BIEBER DATELINE 308Y
BIEBER HARD DRIVE Y120
BIEBER ADELLE 297Y
MRLA RELOAD 56C
MRLA MISS 4422B
LELAND RED DIRECTION 8348U
MS HAMMEL CHEROKEE P145

Table with 17 columns: HB, GM, CED, BW, WW, YW, ADG, MILK, ME, HPG, CEM, STAY, MARB, YG, CW, REA, FAT. Includes rows for weights and ratios.



Lot 64

65

MCCANN MEGA 3129

CRUMP MAGNITUDE 5507
CRUMP MEGA 8849
MDM VERNICE 1020
RED SIX MILE DEEP IMPACT 38D
CRUMP NEXA 9108
CRUMP NEXA 466
BROWN PREMIER X7876
CRUMP TABITHA 3140
WPRA AVALANCHE 818
MDM VERNICE 81-8
SIX MILE SIGNATURE 295B
RED SIX MILE LAKOTO 35W
5L MTN SIGN 435-10Z
MDM NEXA 78-9

Table with 17 columns: HB, GM, CED, BW, WW, YW, ADG, MILK, ME, HPG, CEM, STAY, MARB, YG, CW, REA, FAT. Includes rows for weights and ratios.



Lot 65

66

MCCANN AMERICAN DREAM 3131

LASO BUCKET LIST 58G
LASO AMERICAN DREAM G117J
LASO MS JOLINE Z146G
S A V RESOURCE 1441
CRUMP SABLE 8162
CRUMP EMMA 220
5L ULTIMATUM 1893-03C
LASO LEANNA B4E
SPUR FRANCHISE OF GARTON
JEFFRIES MS JOLINE Z243
RITO 707 OF IDEAL 3407 7075
S A V BLACKCAP MAY 4136
BASIN EXT 8628
MDM EMMA 1210

Table with 17 columns: HB, GM, CED, BW, WW, YW, ADG, MILK, ME, HPG, CEM, STAY, MARB, YG, CW, REA, FAT. Includes rows for weights and ratios.



Lot 66

67

MCCANN AMERICAN DREAM 3133

LASO BUCKET LIST 58G
LASO AMERICAN DREAM G117J
LASO MS JOLINE Z146G
S A V RESOURCE 1441
CRUMP SABLE 8162
CRUMP EMMA 220
5L ULTIMATUM 1893-03C
LASO LEANNA B4E
SPUR FRANCHISE OF GARTON
JEFFRIES MS JOLINE Z243
RITO 707 OF IDEAL 3407 7075
S A V BLACKCAP MAY 4136
BASIN EXT 8628
MDM EMMA 1210

Table with 17 columns: HB, GM, CED, BW, WW, YW, ADG, MILK, ME, HPG, CEM, STAY, MARB, YG, CW, REA, FAT. Includes rows for weights and ratios.

69

MCCANN AMERICAN DREAM 3137

LASO BUCKET LIST E8G
LASO AMERICAN DREAM G117J
LASO MS JOLINE Z146G
BIEBER H HUGHES W109
CRUMP LASS 5134
CRUMP LASS 3108
5L ULTIMATUM 1893-03C
LASO LEANNA B4E
SPUR FRANCHISE OF GARTON
JEFFRIES MS JOLINE Z243
BASIN HOBBO 0545
BASIN ROSE 06T0
MLK CRK EXPRESS 9127
MDM LASS 90-1

Table with 17 columns: HB, GM, CED, BW, WW, YW, ADG, MILK, ME, HPG, CEM, STAY, MARB, YG, CW, REA, FAT. Includes rows for weights and ratios.

68

MCCANN BLUE PRINT 3135

GLACIER CHATEAU 744
RREDS BLUE PRINT H001
RREDS PRIMROSE F835
LMAN KING ROB 8612
GLACIER REBALA
RREDS SENECA 731C
STRA PRIMROSE 530
CRUMP DIRECT AFFECT 9861
MCCANN SABLE 1110
CRUMP SABLE 8156
RED SIX MILE DEEP IMPACT 38D
CRUMP RAM 4416
S A V RESOURCE 1441
CRUMP EMMA 220

Table with 17 columns: HB, GM, CED, BW, WW, YW, ADG, MILK, ME, HPG, CEM, STAY, MARB, YG, CW, REA, FAT. Includes rows for weights and ratios.



Lot 68



Lot 70

70 **MCCANN BLUE PRINT 3139**

GLACIER CHATEAU 744
RREDS BLUE PRINT H001
RREDS PRIMROSE F835

LMAN KING ROB 8612
GLACIER REBALA
RREDS SENECA 731C
STRA PRIMROSE 530

CRUMP DIRECT AFFECT 9861
MCCANN SABLE 1110
CRUMP SABLE 8156

RED SIX MILE DEEP IMPACT 38D
CRUMP RAM 4416
S A V RESOURCE 1441
CRUMP EMMA 220

HB	GM	CED	BW	WW	YW	ADG	MILK	ME	HPG	CEM	STAY	MARB	YG	CW	REA	FAT
48	26	14	-2.3	69	109	0.25	27	5	12	8	14	0.21	0.02	30	0.49	0.03
TOP %																
56% 75% 39% 42% 23% 27% 34% 43% 58% 43% 38% 64% 93% 25% 25% 4% 81%																
WEIGHTS																
80 680 4861018 DOB:01-10-2023 A / 100% AR																
RATIOS →																

71 **MCCANN MEGA 3141**

CRUMP MAGNITUDE 5507
CRUMP MEGA 8849
MDM VERNICE 1020

BROWN PREMIER X7876
CRUMP TABITHA 3140
WPRA AVALANCHE 818
MDM VERNICE 81-8

PIE SENSATION 591
CRUMP LANA 908
CRUMP LANA 7162

PIE ONE OF A KIND 352
PIE JANET 382
VGW MY KIND 540
BECKTON LANA U182 JC

HB	GM	CED	BW	WW	YW	ADG	MILK	ME	HPG	CEM	STAY	MARB	YG	CW	REA	FAT
42	32	15	-3.1	61	101	0.25	33	7	10	8	14	0.41	0.01	14	0.21	0.02
TOP %																
68% 64% 25% 26% 49% 43% 36% 5% 72% 69% 30% 56% 52% 21% 85% 34% 57%																
WEIGHTS																
81 800 4848290 DOB:12-17-2022 A / 100% AR																
RATIOS →																



Lot 71



Lot 72

72 **MCCANN BADGE 3143**

RED U2 EMBLEM 147F
RED U2Q BADGE 73H
RED U-2 REBELLO 400C

RED YCLC COPENHAGEN 653C
RED U2 MS DIVIDE 28Z
RED U-2 RECON 192Y
RED U-2 REBELLO 278Z

RED HILL 13R RIPPER 28U
CRUMP AMBER Y187
BUF CRK AMBER R087

RED HILL L081 RIPPER 13R
RED HILL 17P BARMAID 46S
BUF CRK ROMEO L081
BUF CRK AMBER M033

HB	GM	CED	BW	WW	YW	ADG	MILK	ME	HPG	CEM	STAY	MARB	YG	CW	REA	FAT
52	16	14	-2.0	65	96	0.20	32	-9	9	7	13	0.23	0.05	21	0.12	0.01
TOP %																
48% 90% 39% 48% 37% 55% 28% 7% 12% 88% 51% 67% 91% 39% 64% 54% 42%																
WEIGHTS																
88 760 4848336 DOB:02-06-2023 A / 100% AR																
RATIOS →																

73 **MCCANN ENERGIZE 3145**

BIEBER CL ATOMIC C218
BIEBER CL ENERGIZE F121
BIEBER CL ADELLE 575D

ANDRAS FUSION R236
BIEBER DATELINE 308Y
BIEBER HARD DRIVE Y120
BIEBER ADELLE 297Y

CRUMP MEGA 8849
MCCANN SABLE 1108
CRUMP SABLE 8162

CRUMP MAGNITUDE 5507
MDM VERNICE 1020
S A V RESOURCE 1441
CRUMP EMMA 220

HB	GM	CED	BW	WW	YW	ADG	MILK	ME	HPG	CEM	STAY	MARB	YG	CW	REA	FAT
35	54	15	4.4	66	116	0.31	28	7	13	6	13	0.45	0.00	24	0.37	0.02
TOP %																
80% 21% 20% 11% 32% 15% 5% 28% 74% 18% 78% 69% 42% 18% 50% 11% 59%																
WEIGHTS																
70 670 4848216 DOB:02-03-2023 A / 100% AR																
RATIOS →																

74 **MCCANN AVALANCHE 3147**

WPRA AVALANCHE 818
MCCANN AVALANCHE 0174
CRUMP SCARLET 8174

PIE AVALANCHE 381
WPRA BLACK RED JOY 508
CRUMP RUNAWAY 5121
MDM SUSIE 133-9

CRUMP RESOURCE 8201
CRUMP SHOSHONE 0217
CRUMP SHOSHONE 359

S A V RESOURCE 1441
MDM VERNICE 1020
5L CANYON WATCH 1386-113Y
MDM SHOSHONE 440

HB	GM	CED	BW	WW	YW	ADG	MILK	ME	HPG	CEM	STAY	MARB	YG	CW	REA	FAT
45	53	12	-1.3	68	116	0.30	30	7	9	6	15	0.46	0.00	27	0.35	0.02
TOP %																
64% 21% 57% 61% 25% 15% 9% 13% 71% 90% 66% 42% 40% 19% 36% 13% 44%																
WEIGHTS																
84 600 4848194 DOB:03-05-2023 A / 100% AR																
RATIOS →																



Lot 75

75 MCCANN NEW QUEST 3149

DAMAR NEWQUEST C815
LDR NEW QUEST 8071
LDR BANEERRY 5238

ANDRAS NEW DIRECTION R240
BROWN MS CONQUEST Z7870
RED LAZY MC CC DETOUR 2W
RED SOO LINE BANEERRY 5238

CRUMP RESOURCE 8201
CRUMP EMMA 0198
CRUMP EMMA 0198

S A V RESOURCE 1441
MDM VERNICE 1020
BASIN EXT 8628
MDM EMMA 1210

HB	GM	CED	BW	WW	YW	ADG	MILK	ME	HPG	CEM	STAY	MARB	YG	CW	REA	FAT	
17	39	12	-1.4	68	110	0.26	25	8	10	7	10	0.44	0.14	28	0.11	0.04	
TOP %	96%	48%	62%	60%	25%	25%	28%	62%	76%	73%	51%	92%	45%	85%	34%	56%	85%
WEIGHTS	82	690					4848192				DOB:02-16-2023		A / 100% AR				
RATIOS →	103																

76 MCCANN BLUE COLLAR 3151

RED U-2 RECKONING 149A
RED U2 BLUE COLLAR 295E
RED U-2 ANEXA 439A

RED U-2 RECON 192Y
RED U-2 ANEXA 271Y
RED MINBURN COPENHAGEN 3Y
RED U-2 ANEXA 443Y

CRUMP MAGNITUDE 5507
CRUMP AMBER 9336
CRUMP AMBER Y187

BROWN PREMIER X7876
CRUMP TABITHA 3140
RED HILL 13R RIPPER 28U
BUF CRK AMBER R087

HB	GM	CED	BW	WW	YW	ADG	MILK	ME	HPG	CEM	STAY	MARB	YG	CW	REA	FAT	
46	44	14	-1.9	58	94	0.23	33	-1	7	9	15	0.56	0.05	14	0.13	0.03	
TOP %	60%	38%	32%	50%	64%	58%	50%	3%	28%	98%	20%	53%	22%	38%	83%	51%	66%
WEIGHTS	75	630					4848300				DOB:03-01-2023		A / 100% AR				
RATIOS →	91																

77 MCCANN BLUE COLLAR 3153

RED U-2 RECKONING 149A
RED U2 BLUE COLLAR 295E
RED U-2 ANEXA 439A

RED U-2 RECON 192Y
RED U-2 ANEXA 271Y
RED MINBURN COPENHAGEN 3Y
RED U-2 ANEXA 443Y

BROWN COMPLETE B238
CRUMP NEXA 0122
CRUMP NEXA 5128

LSF TAKEOVER 9943W
BROWN MS P707 X7580
HXC FORMYLATION 3014A
CRUMP NEXA 2121

HB	GM	CED	BW	WW	YW	ADG	MILK	ME	HPG	CEM	STAY	MARB	YG	CW	REA	FAT	
36	51	12	1.2	80	122	0.26	28	-1	8	7	12	0.66	0.21	35	0.00	0.04	
TOP %	79%	25%	66%	94%	3%	8%	28%	35%	28%	94%	53%	84%	12%	98%	13%	79%	88%
WEIGHTS	85	810					4848180				DOB:02-26-2023		A / 100% AR				
RATIOS →	106																



Lot 78

78 MCCANN BLUE PRINT 3155

GLACIER CHATEAU 744
RREDS BLUE PRINT H001
RREDS PRIMROSE F835

LMAN KING ROB 8621
GLACIER REBALA
RREDS SENECA 731C
STRA PRIMROSE 530

CRUMP INNOVATION 8185
CRUMP ELIZABETH 0138
CRUMP ELIZABETH8146

S A V RESOURCE 1441
MDM VERNICE 1020
S A V RESOURCE 1441
MDM VERNICE 1020

HB	GM	CED	BW	WW	YW	ADG	MILK	ME	HPG	CEM	STAY	MARB	YG	CW	REA	FAT	
12	34	14	-1.9	74	126	0.32	26	12	9	7	10	0.17	0.02	37	0.56	0.03	
TOP %	98%	59%	34%	50%	10%	6%	4%	52%	92%	90%	45%	92%	96%	26%	9%	2%	77%
WEIGHTS	77	730					4848182				DOB:02-17-2023		A / 100% AR				
RATIOS →	97																

80 MCCANN AMERICAN DREAM 3159

LASO BUCKET LIST E8G
LASO AMERICAN DREAM G117J
LASO MS JOLINE Z146G

5L ULTIMATUM 1893-03C
LASO LEANNA B4E
SPUR FRANCHISE OF GARTON
JEFFRIES MS JOLINE Z243

MUSHRUSH LOCK 'N' LOAD U213
CRUMP EMMA 520
CRUMP EMMA 220

BUF CRK LANCER R017
MUSHRUSH PRIMROSE MM R213
BASIN EXT 8628
MDM EMMA 1210

HB	GM	CED	BW	WW	YW	ADG	MILK	ME	HPG	CEM	STAY	MARB	YG	CW	REA	FAT	
25	40	10	2.0	83	131	0.30	28	8	12	6	10	0.57	-0.00	23	0.29	0.01	
TOP %	92%	47%	89%	97%	2%	3%	9%	33%	78%	32%	69%	92%	21%	18%	53%	20%	37%
WEIGHTS	66	750					4848242				DOB:03-06-2023		A / 100% AR				
RATIOS →																	

79 MCCANN BIG IORN 3157

5L BIG IORN 4558-28B
MCCANN BIG IORN 1053
CRUMP NEXA 5126

5L DEFENDER 560-30Z
5L FIREFLY 1065-4558
MUSHRUSH LOCK 'N' LOAD U213
CRUMP NEXA 2111

PIE CINCH 4126
CRUMP BRANDY 9358
TR BRANDY XT074

LSF SAGA 1040Y
TKP BONNE BEL 110
TR EPIC ST618
TR COCA RT527

HB	GM	CED	BW	WW	YW	ADG	MILK	ME	HPG	CEM	STAY	MARB	YG	CW	REA	FAT	
48	-3	11	-1.3	62	94	0.20	34	4	15	6	13	0.28	0.10	5	-0.16	0.03	
TOP %	56%	99%	73%	61%	46%	60%	73%	2%	55%	7%	72%	68%	83%	69%	97%	96%	68%
WEIGHTS	84	600					4848302				DOB:03-15-2023		A / 100% AR				
RATIOS →	102																



Lot 80

81 MCCANN BLUE COLLAR 3161

RED U-2 RECKONING 149A
 RED U2 BLUE COLLAR 295E
 RED U-2 ANEXA 439A

RED U-2 RECON 192Y
 RED U-2 ANEXA 271Y
 RED MINBURN COPENHAGEN 3Y
 RED U-2 ANEXA 443Y

CRUMP NEW DECADE 9341
 MCCANN PINETA 1064
 CRUMP PINETA 7120

CRUMP MAGNITUDE 5507
 TR BRANDY XT074
 PIE ONE OF A KIND 352
 CRUMP PINETA 4146

HB	GM	CED	BW	WW	YW	ADG	MILK	ME	HPG	CEM	STAY	MARB	YG	CW	REA	FAT	
63	53	14	-2.8	65	109	0.28	32	0	11	9	15	0.52	0.14	26	0.04	0.03	
POP %	27%	21%	34%	32%	36%	26%	17%	7%	32%	51%	17%	46%	29%	84%	41%	71%	75%
WEIGHTS	81	660					4848212										
RATIOS →	106																

Don't forget to RSVP for the livestream or the dinner in Billings to Amanda Coleman (legalassistant@wvmccann.com) or call 208-743-5517 and let us know how many will be attending!

82 MCCANN INNOVATION 3163

S A V RESOURCE 1441
 CRUMP INNOVATION 8185
 MDM VERNICE 1020

RITO 707 OF IDEAL 3407 7075
 S A V BLACKCAP MAY 4136
 WPRA AVALANCHE 818
 MDM VERNICE 81-8

BROWN PREMIER X7876
 CRUMP VERNICE 556
 CRUMP VERNICE 357

BECKTON NEBULA P P707
 BROWN MS DESTINATION T7664
 GMRA PEACEMAKER 1216
 MDM VERNICE 38-8

HB	GM	CED	BW	WW	YW	ADG	MILK	ME	HPG	CEM	STAY	MARB	YG	CW	REA	FAT	
36	55	14	-2.5	65	111	0.29	25	9	11	8	14	0.51	0.06	36	0.59	0.05	
POP %	79%	19%	32%	38%	33%	22%	14%	56%	83%	49%	35%	60%	30%	44%	11%	2%	97%
WEIGHTS	84	630					4848250										
RATIOS →	101																



Lot 82

83 MCCANN AVALANCHE 3165

WPRA AVALANCHE 818
 MCCANN AVALANCHE 0174
 CRUMP SCARLET 8174

PIE AVALANCHE 381
 WPRA BLACK RED JOY 508
 CRUMP RUNAWAY 5121
 MDM SUSIE 133-9

CRUMP HERCULES 333
 CRUMP MINOLA 5532
 BASIN MINOLA W020

MILK CRK EXPRESS 9127
 MDM VERNICE 1281
 BASIN CHEROKEE 5856
 BASIN MINOLA 5907

HB	GM	CED	BW	WW	YW	ADG	MILK	ME	HPG	CEM	STAY	MARB	YG	CW	REA	FAT	
54	13	12	-1.4	59	95	0.22	26	2	10	6	16	0.31	0.04	11	0.24	0.04	
POP %	45%	92%	66%	60%	57%	55%	45%	45%	73%	79%	27%	76%	36%	90%	29%	90%	
WEIGHTS	83	680					4848246										
RATIOS →	100																



Lot 83

84 MCCANN SPARTACUS 3167

BIEBER SPARTACUS A193
 BIEBER ROU SPARTACUS D13
 GHR CHINOOK W30

BIEBER ROUSE SAMURAI X22
 BIEBER TILLY 233U
 LJC MISSION STATEMENT P27
 MASIN CHINOOK 08P6

BROWN PREMIER X7876
 CRUMP REBAL 7792
 MDM GLACIER REBAL 124-9

BECKTON NEBULA P P707
 BROWN MS DESTINATION T7664
 D A IMAGE MAKER 713
 MDM GLACIER REBAL 85

HB	GM	CED	BW	WW	YW	ADG	MILK	ME	HPG	CEM	STAY	MARB	YG	CW	REA	FAT	
72	69	14	-3.2	123	123	0.31	32	7	11	9	18	0.81	0.20	33	0.03	0.05	
POP %	15%	69%	27%	26%	12%	8%	6%	6%	74%	54%	25%	12%	4%	97%	18%	73%	93%
WEIGHTS	81	660					4848266										
RATIOS →	97																



Lot 84

85 MCCANN MEGA 3169

CRUMP MAGNITUDE 5507
 CRUMP MEGA 8849
 MDM VERNICE 1020

BROWN PREMIER X7876
 CRUMP TABITHA 3140
 WPRA AVALANCHE 818
 MDM VERNICE 81-8

BIEBER LB MITIGATOR C314
 CRUMP SHOSHONE 7132
 CRUMP SHOSHONE 5142

BIEBER ROLLIN DEEP Y118
 BIEBER TILLY 143Y
 BROWN PREMIER X7876
 CRUMP SHOSHONE 3131

HB	GM	CED	BW	WW	YW	ADG	MILK	ME	HPG	CEM	STAY	MARB	YG	CW	REA	FAT	
36	47	13	-2.2	73	123	0.32	31	12	10	8	14	0.48	0.01	28	0.28	0.01	
POP %	79%	32%	44%	43%	12%	7%	5%	12%	92%	72%	28%	66%	23%	34%	34%	21%	33%
WEIGHTS	79	910					4848340										
RATIOS →	95																



Lot 85

86 MCCANN RESOURCE 3171

RED U2 RESOURCE 33G
 MCCANN RESOURCE 1183
 CRUMP AMBER 9842

RED MRLA RESOURCE 137E
 U2 BEAUTY 113Z
 5L BIG IRON 4558-28B
 CRUMP AMBER Y187

CRUMP NEW DECADE 9341
 MCCANN EMMA 1122
 CRUMP EMMA 9998

CRUMP MAGNITUDE 5507
 TR BRANDY XT074
 MR COACH 1296
 CRUMP EMMA 7804

HB	GM	CED	BW	WW	YW	ADG	MILK	ME	HPG	CEM	STAY	MARB	YG	CW	REA	FAT	
62	26	14	-2.7	59	99	0.25	33	-2	14	9	14	0.18	0.11	25	-0.01	0.02	
POP %	29%	75%	27%	34%	58%	49%	38%	4%	25%	11%	17%	66%	96%	74%	46%	81%	45%
WEIGHTS	72	680					4848218										
RATIOS →	95																

87 MCCANN ENERGIZE 3173

BIEBER CL ATOMIC C218
 BIEBER CL ENERGIZE F121
 BIEBER CL ADELLE 575D

ANDRAS FUSION R236
 BIEBER DATELINE 308Y
 BIEBER HARD DRIVE Y120
 BIEBER ADELLE 297Y

MRLA RELOAD 56C
 MRLA MISS 4422B
 5L MTN SIGN 435-10Z
 FOSTER'S CEDER 36

HB	GM	CED	BW	WW	YW	ADG	MILK	ME	HPG	CEM	STAY	MARB	YG	CW	REA	FAT	
62	57	17	-3.5	59	93	0.21	24	-1	14	8	15	0.60	0.05	28	0.40	0.04	
POP %	12%	16%	5%	21%	58%	61%	63%	66%	29%	13%	28%	49%	18%	41%	32%	8%	87%
WEIGHTS	75	650					4848338										
RATIOS →	90																



Lot 87

Reference Sire EPDS



MCCANN AVALANCHE 0174

4354871 01-28-2020 100% AR
 PIE AVALANCHE 381 PERKS ADVANCE 121R
 WPRA AVALANCHE 818 PIE MS GRAND C 036
 WPRA BLACK RED JOY 508 RBJR REDJOY E402
 CRUMP RUNAWAY 5121 CRUMP RUNAWAY 3178
 CRUMP SCARLET 8174 MDM GLACIER REBAL 124-9
 MDM SUSIE 133-9 LJC JAVELIN MO8
 MDM SUSIE 91-6

	HB	GM	CED	BW	WW	YW	MILK	ME	HPG	CEM	STAY	MARB	YG	CW	REA	FAT
	32	32	11	-2.0	66	108	30	7	9	6	14	0.53	0.07	13	-0.03	0.02
TOP %	77%	57%	66%	46%	39%	35%	16%	69%	88%	63%	63%	30%	48%	82%	77%	44%



RED U-2 BLUE COLLAR 295E

3927955 02-21-2017 100% AR
 RED U-2 RECON 192Y RED U2 MISSION 61W
 RED U-2 RECKONING 149A RED U-2 LARKABA 8133U
 RED U-2 ANEXA 271Y RED HOWE MAGNUM 169W
 RED U-2 ANEXA 33N
 RED MINBURN COPENHAGEN 3Y RED RMJ REDMAN 1T
 RED U-2 ANEXA 439A MINBURN MAY 112M
 RED U-2 ANEXA 443Y RED HOWE MAGNUM 169W
 RED U-2 ANEXA 127W

	HB	GM	CED	BW	WW	YW	MILK	ME	HPG	CEM	STAY	MARB	YG	CW	REA	FAT
	45	25	9	1.3	69	109	30	11	6	7	14	0.34	0.07	23	0.25	0.03
TOP %	59%	69%	86%	91%	28%	34%	21%	15%	98%	54%	56%	64%	45%	52%	29%	72%



NIO FREIGHTLINER 0068

4370165 02-11-2020 100% AR
 PIE ONE OF A KIND 352 BUF CRK THE RIGHT KIND U199
 RRA ONE AND ONLY 733 PIE FAYETTE 1160
 WCR MISS BLACKBIRD DE 510Y RED LAZY MC CC DETOUR 2W
 BLAIRS BLACKBIRD 107X
 BLACK WHEEL ODYSSEY 117U BLACK WHEEL ODYSSEY 2M
 RED U2 ALANA 13X RED WHEEL BRIDGET 7P
 RED U6 ALANA 65T RED U6 TWENTY X 29P
 RED U6 ALANA 12K

	HB	GM	CED	BW	WW	YW	MILK	ME	HPG	CEM	STAY	MARB	YG	CW	REA	FAT
	53	27	13	1.3	83	136	28	6	11	7	15	0.13	0.09	35	0.37	0.04
TOP %	46%	65%	46%	91%	6%	5%	33%	61%	56%	50%	52%	93%	58%	21%	17%	84%



BB PROPULSION 9096

4169122 03-15-2019 100% AR
 PIE ONE OF A KIND 352 BUF CRK THE RIGHT KIND U199
 PIE ONE OF A KIND 777 PIE FAYETTE 1160
 PIE JULY DALLES 569 ANDRAS NEW DIRECTION R240
 3422 PIE
 LARSON SUN KING 016 BECKTON NEBULA P P707
 BB MS GINNIE 6256 LARSON TAMARA 545-556
 BB MS GINNIE 6019-2057 MESSMER PACKER S008
 MESSMER GINNIE S019

	HB	GM	CED	BW	WW	YW	MILK	ME	HPG	CEM	STAY	MARB	YG	CW	REA	FAT
	79	38	12	-1.6	86	129	35	2	19	9	13	0.67	0.20	29	-0.01	0.05
TOP %	12%	48%	58%	53%	4%	9%	2%	39%	2%	17%	67%	14%	92%	34%	74%	87%



LASO AMERICAN DREAM G117J

4520887 12-25-2020 100% AR
 5L ULTIMATUM 1893-03C 5L BOURNE 117-48A
 LASO BUCKET LIST E8G 5L PRETTY GUN 1300-1893
 LASO LEANNA B4E 5L DEFENDER 560-30Z
 LASO LEANNA W184B
 SPUR FRANCHISE OF GARTON SPUR FRANCHISE 7070
 LASO MS JOLINE Z146G H & H IRENE LASS 0135
 JEFFRIES MS JOLINE Z243 C-BAR CONTOUR 107X
 BROWN MS BIG SKY Y7877

	HB	GM	CED	BW	WW	YW	MILK	ME	HPG	CEM	STAY	MARB	YG	CW	REA	FAT
	38	47	10	-2.3	83	130	30	12	11	6	16	0.98	-0.00	18	0.34	0.03
TOP %	69%	20%	76%	41%	6%	8%	21%	87%	61%	78%	54%	2%	19%	69%	19%	63%



CRUMP MEGA 8849

3867311 02-12-2018 100% AR
 BROWN PREMIER X7876 BECKTON NEBULA P P707
 CRUMP MAGNITUDE 5507 BROWN MS DESTINATION T7664
 CRUMP TABITHA 3140 CRUMP 300 ULTRA MAGNUM Y106
 VGW T376-TABITHA 1069
 PIE AVALANCHE 381
 WPRA AVALANCHE 818 WPRA BLACK RED JOY 508
 MDM VERNICE 1020 MDM CHATEAU 324
 MDM VERNICE 81-8 MDM VERNICE 999

	HB	GM	CED	BW	WW	YW	MILK	ME	HPG	CEM	STAY	MARB	YG	CW	REA	FAT
	37	54	14	-2.4	58	102	29	11	9	6	16	0.65	0.07	23	0.23	0.03
TOP %	73%	20%	37%	38%	63%	43%	18%	87%	83%	64%	41%	13%	46%	50%	28%	76%



RED U2 RESOURCE 33G

4235976 01-05-2019 100% AR
 MRLA RELOAD 56C S A V RESOURCE 1441
 RED MRLA RESOURCE 137E RED MRLA MISS 641Y
 MRLA MISS 4422B S A V HARVESTOR 0338
 MRLA MISS 433T
 RE U-2 MAMA'S BOY 167X RED FLYING K AMBUSH 6T
 U2 BEAUTY 113Z RED FLYING K LAKOTA 104U
 RED U-2 BEAUTY 48X RED U-2 DYNAMO 7021T
 RED FLYING K BEAUTY 6N

	HB	GM	CED	BW	WW	YW	MILK	ME	HPG	CEM	STAY	MARB	YG	CW	REA	FAT
	30	29	9	0.8	57	94	23	0	14	5	11	0.25	0.06	23	0.13	0.02
TOP %	82%	60%	86%	87%	64%	58%	71%	30%	15%	75%	90%	81%	42%	48%	45%	43%

Reference Sire EPDS



RED U2Q BADGE 73H

4609313 01-25-2020 100% AR
 RED YCLC COPENHAGEN 653C RED U-2 AUTHENTIC 139A
 RED U2 EMBLEM 147F RED YCLC COUNTESS 265Z
 RED MS DIVIDE 28Z RED HOWE MAGNUM 169W
 RED U2 MS DIVIDE 475W
 RED U-2 RECON 192Y RED U2 MISSION 61W
 RED U-2 REBELLO 400C RED U-2 LARKABA 8133U
 RED U-2 REBELLO 278Z RED LAZY MC COWBOY CUT 26U
 RED U-2 REBELLO 852G

	HB	GM	CED	BW	WW	YW	MILK	ME	HPG	CEM	STAY	MARB	YG	CW	REA	FAT
	42	23	7	1.3	78	112	27	-7	11	2	14	0.31	0.06	38	0.30	0.01
TOP %	64%	72%	95%	91%	11%	29%	43%	11%	57%	97%	61%	70%	41%	14%	23%	36%

CRUMP INNOVATION 8185

3867585 01-19-2018 100% AR
 RITO 707 OF IDEAL 3407 7075 R R RITO 707
 S A V RESOURCE 1441 IDEAL 3407 OF 1418 076
 S A V BLACKCAP MAY 4136 S A V 8180 TRAVELER 004
 S A V MAY 2397
 WPRA AVALANCHE 818 PIE AVALANCHE 381
 MDM VERNICE 1020 WPRA BLACK RED JOY 508
 MDM VERNICE 81-8 MDM CHATEAU 324
 MDM VERNICE 999

	HB	GM	CED	BW	WW	YW	MILK	ME	HPG	CEM	STAY	MARB	YG	CW	REA	FAT
	27	58	10	2.2	87	155	19	8	13	2	14	0.25	0.15	61	0.58	0.05
TOP %	52%	85%	75%	96%	2%	1%	88%	77%	23%	97%	59%	81%	82%	1%	5%	91%

RREDS BLUE PRINT H001

4287851 01-09-2020 100% AR
 LMAN KING ROB 8621 LEACHMAN ROBUST 7222
 GLACIER CHATEAU 744 LEACHMAN ELEANOR
 GLACIER REBALA LCHMN MDLD HVYWT2463
 GLACIER REBALAS
 RREDS SENECA 731C BIEBER ROLLIN DEEP Y118
 RREDS PRIMROSE F835 RREDS ASTER 309A
 STRA PRIMROSE 530 BIEBER HARD DRIVE Y120
 STRA PRIMROSE 395

	HB	GM	CED	BW	WW	YW	MILK	ME	HPG	CEM	STAY	MARB	YG	CW	REA	FAT
	57	-6	16	-5.1	60	92	29	5	10	10	15	0.01	-0.09	17	0.66	0.03
TOP %	40%	97%	17%	7%	59%	67%	28%	54%	66%	8%	50%	98%	6%	72%	4%	74%

MCCANN BIG IORN 1053

4488883 01-23-2021 100% AR
 5L DEFENDER 560-30Z 5L ADVOCATE 817-14W
 5L BIG IRON 4558-28B 5L BLACK ADINA 525-560
 5L FIREFLY 1065-4558 5L DESTINATION 893-6215
 5L FIREFLY 89-1065
 MUSHRUSH LOCK 'N' LOAD U213 BUF CRK LANCER R017
 CRUMP NEXA 5126 MUSHRUSH PRIMROSE MM R213
 CRUMP NEXA 2111 MDM CUB 4-160-0
 MDM NEXA 67-8

	HB	GM	CED	BW	WW	YW	MILK	ME	HPG	CEM	STAY	MARB	YG	CW	REA	FAT
	40	17	9	0.5	66	100	33	3	14	5	13	0.54	0.04	0	-0.06	0.02
TOP %	66%	80%	84%	84%	46%	52%	8%	42%	24%	85%	71%	29%	32%	97%	82%	50%

Understanding EPDs

Herdbuilder Index (HB): An index used to estimate differences in profitability for the sustainability of the cowherd. This index was created on the assumption that an operation raises its own replacement females and terminally markets the remainder of the calf crop on a quality based grid. Given that replacement heifers are retained, primary influence is placed on maternal traits such as Stay, HPG and CE. MARB, YG, and growth EPD's also impact this index but to a lesser degree.

GridMaster (GM): An index used to estimate differences in profitability for those whose primary goal is to maximize profitability in the feedyard and on the rail. This index was created on the assumption that an operation markets all of the calf crop terminally on a quality based grid with no replacement females being raised. MARB, YG and growth EPD's are traits of primary importance in this index.

Calving Ease Direct (CED): Predicts the probability of calves being born unassisted from two year-old heifers. Selecting on actual birth weight is flawed; it is influenced by non-genetic factors such as nutrition and weather. While the BW EPD removes these non-genetic factors, the CED EPD is the best predictor of calving ease. CED includes variation in BW plus other influential genetic factors such as gestation length, calf shape, etc. The higher the CED EPD, the less calving difficulty.

Birth Weight (BW): Predicts the difference, in pounds, for birth weight, and is also used in the calculation of the CED EPD.

Weaning Weight (WW): Predicts the difference, in pounds, for weaning weight (adjusted to age of dam and a standard 205 days of age). This is an indicator of growth from birth to weaning.

Yearling Weight (YW): Predicts the expected difference, in pounds, for yearling weight (adjusted to 365 days of age). This is an indicator of growth from birth to yearling.

Maintenance Energy (ME): Predicts the differences in maintenance energy requirements of mature daughters of a bull. The lower the ME EPD, the less feed daughters require to maintain body condition.

Heifer Pregnancy (HPG): Predicts the probability of heifers conceiving to calve at two years of age.

Calving Ease Maternal (CEM): Predicts the probability of a given animal's daughters calving unassisted at two years of age.

Stayability (STAY): Predicts the probability of a bull's daughters remaining in the herd until at least six years of age.

Marbling (MARB): Predicts the differences for carcass marbling score as expressed in marbling score units. Higher marbling scores are positively correlated with higher carcass quality grades.

Rib Eye Area (REA): Predicts differences of carcass Rib Eye Area depth over the 12th rib. Increased Rib Eye Area has a beneficial effect on Yield Grade which also includes Carcass Weight and Fat Thickness.

12th Rib Fat Thickness (FAT): Predicts differences for carcass fat depth over the 12th rib, as expressed in inches. Increases in fat thickness has a detrimental effect on Yield Grade.

Note: True genetic progress in any registered or commercial operation can be enhanced with the use of EPDs from a balanced approach, along with other selection criteria. Fundamental traits of profitable and productive cattle are best evaluated through a combination of visual appraisal with performance, EPDs and pedigree assessment, coupled with individual goals and needs.

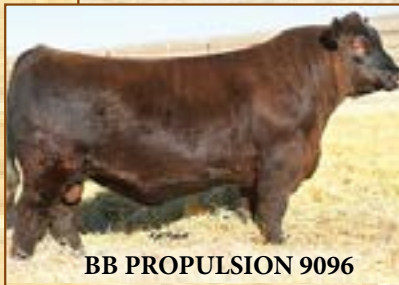
Thank you for your consideration
of our cattle!

We hope to see you in the pens and in the
seats on Saturday, March 4, 2024
in Billings, MT!

McCann Red Angus
1027 Bryden Ave.
Lewiston, ID 83501

87 BULLS SELL!

Sires Include:



Request a catalog, find updated information and learn more about us at

www.mccannredangus.com